

Phylogenetic analysis of influenza B Victoria lineage HA genes

22/23 vaccine strain in Japan

HI reference strain

November 2022

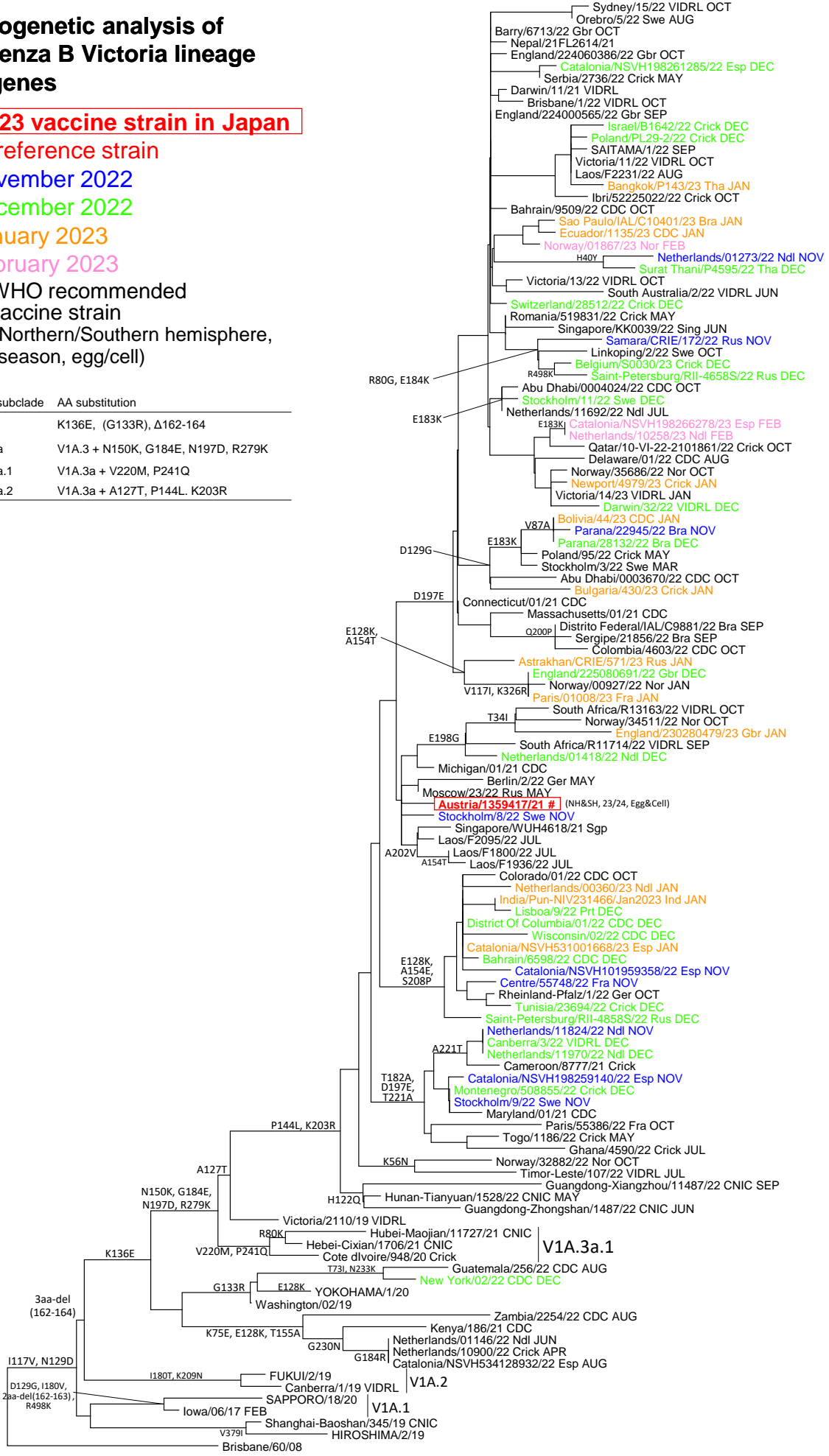
December 2022

January 2023

February 2023

#: WHO recommended vaccine strain (Northern/Southern hemisphere, season, egg/cell)

clade/subclade	AA substitution
V1A.3	K136E, (G133R), Δ162-164
V1A.3a	V1A.3 + N150K, G184E, N197D, R279K
V1A.3a.1	V1A.3a + V220M, P241Q
V1A.3a.2	V1A.3a + A127T, P144L, K203R



V1A.3a.2
V1A.3a
V1A.3