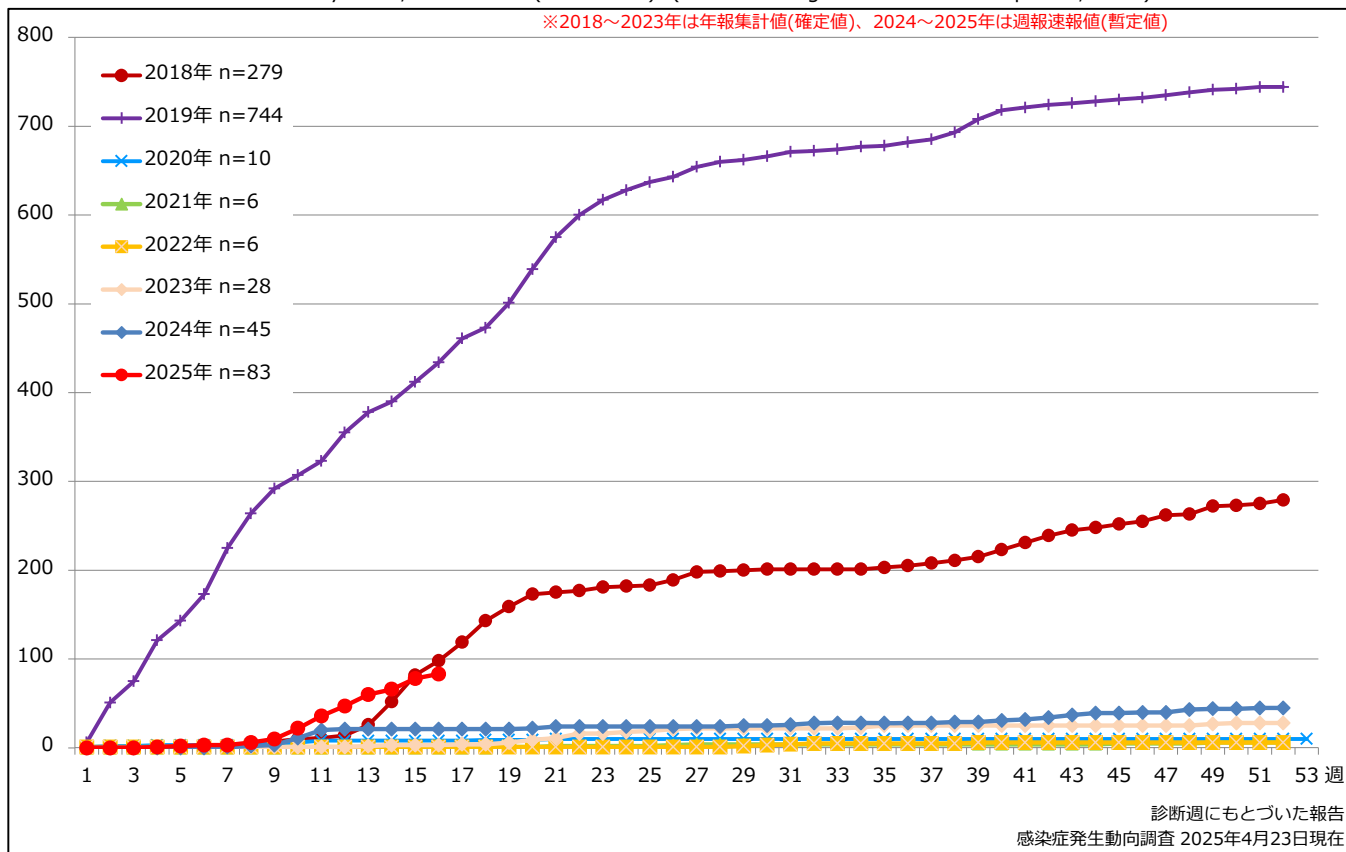


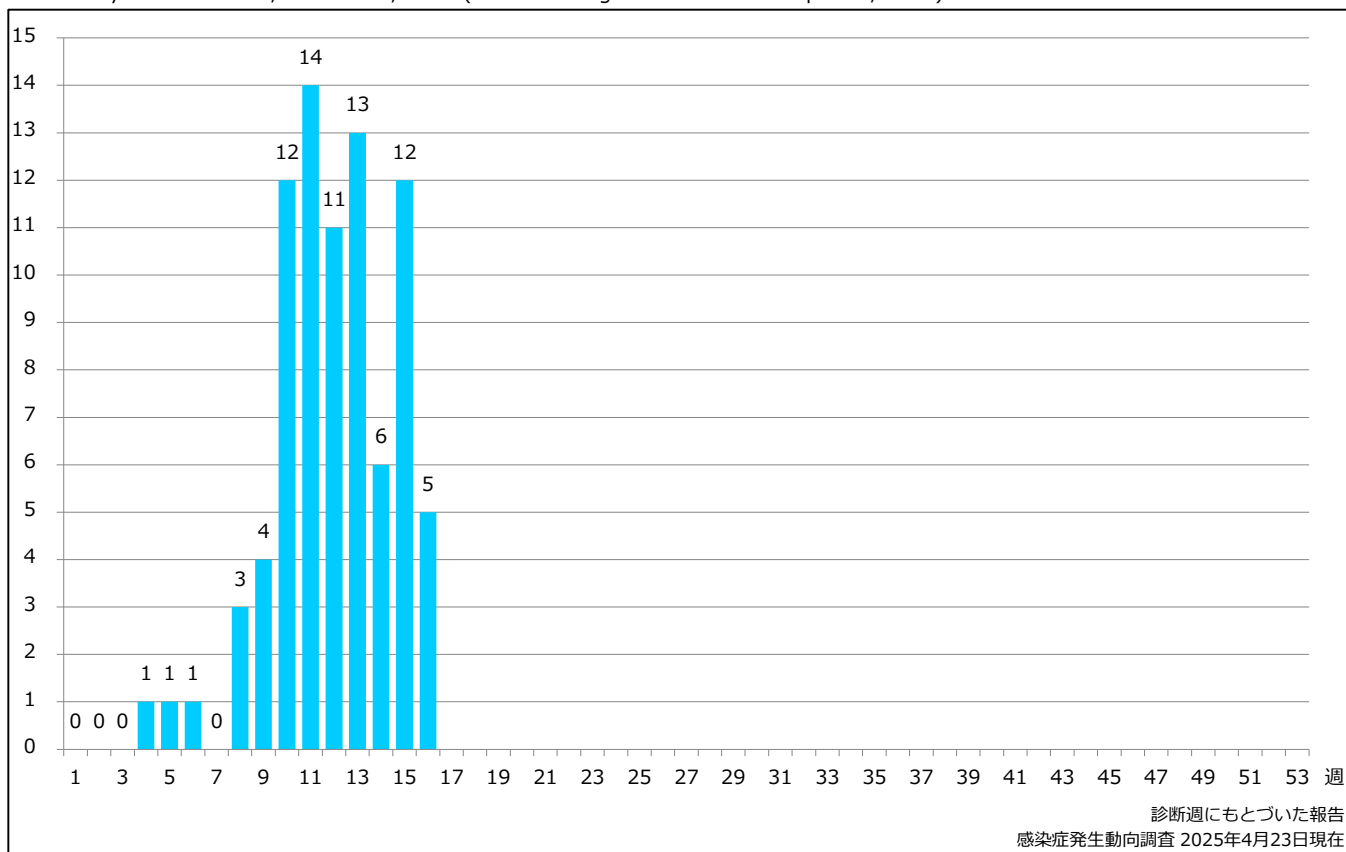
1. 麻疹累積報告数の推移 2018~2025年 (第1~16週)

Cumulative measles cases by week, 2018-2025 (week 1-16) (based on diagnosed week as of April 23, 2025)



2. 週別麻疹報告数 2025年 第1~16週 (n=83)

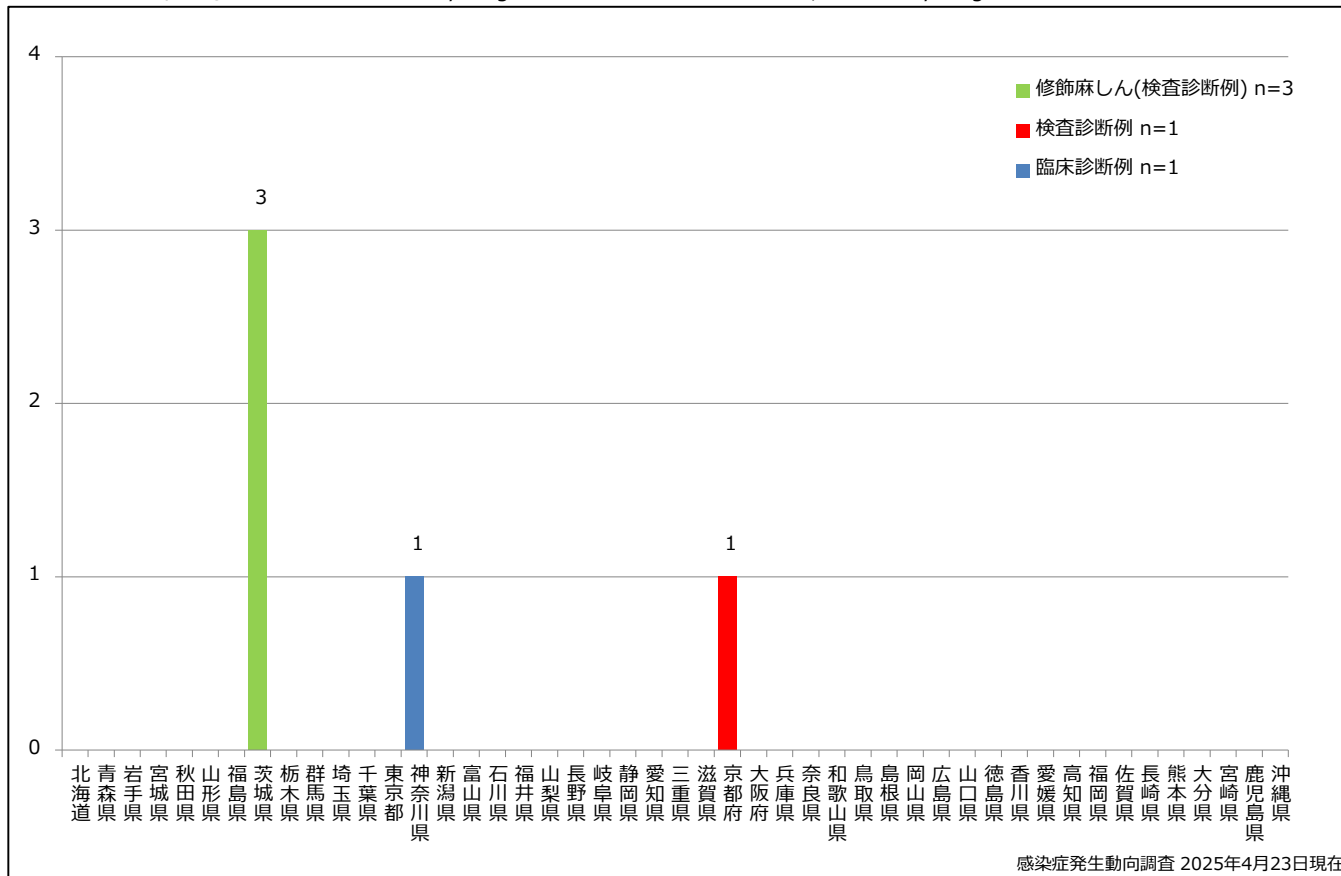
Weekly measles cases, week 1-16, 2025 (based on diagnosed week as of April 23, 2025)



3. 都道府県別病型別麻疹報告数 2025年 第16週 (n=5)

Reported measles cases by prefecture and methods of diagnosis in week 16, 2025 (as of April 23, 2025)

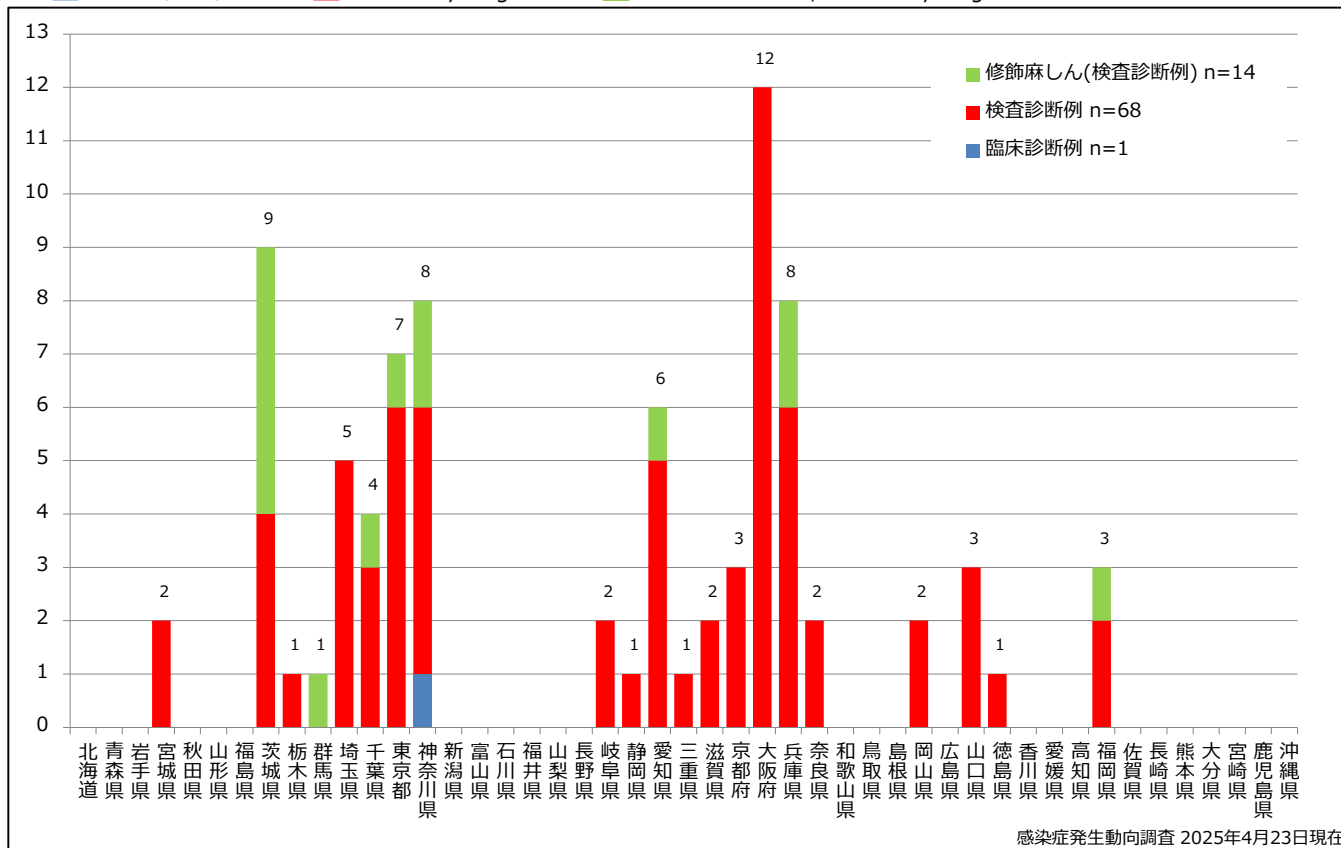
■ Clinically diagnosed ■ Laboratory diagnosed ■ Modified measles, Laboratory diagnosed



4. 都道府県別病型別麻疹累積報告数 2025年 第1~16週 (n=83)

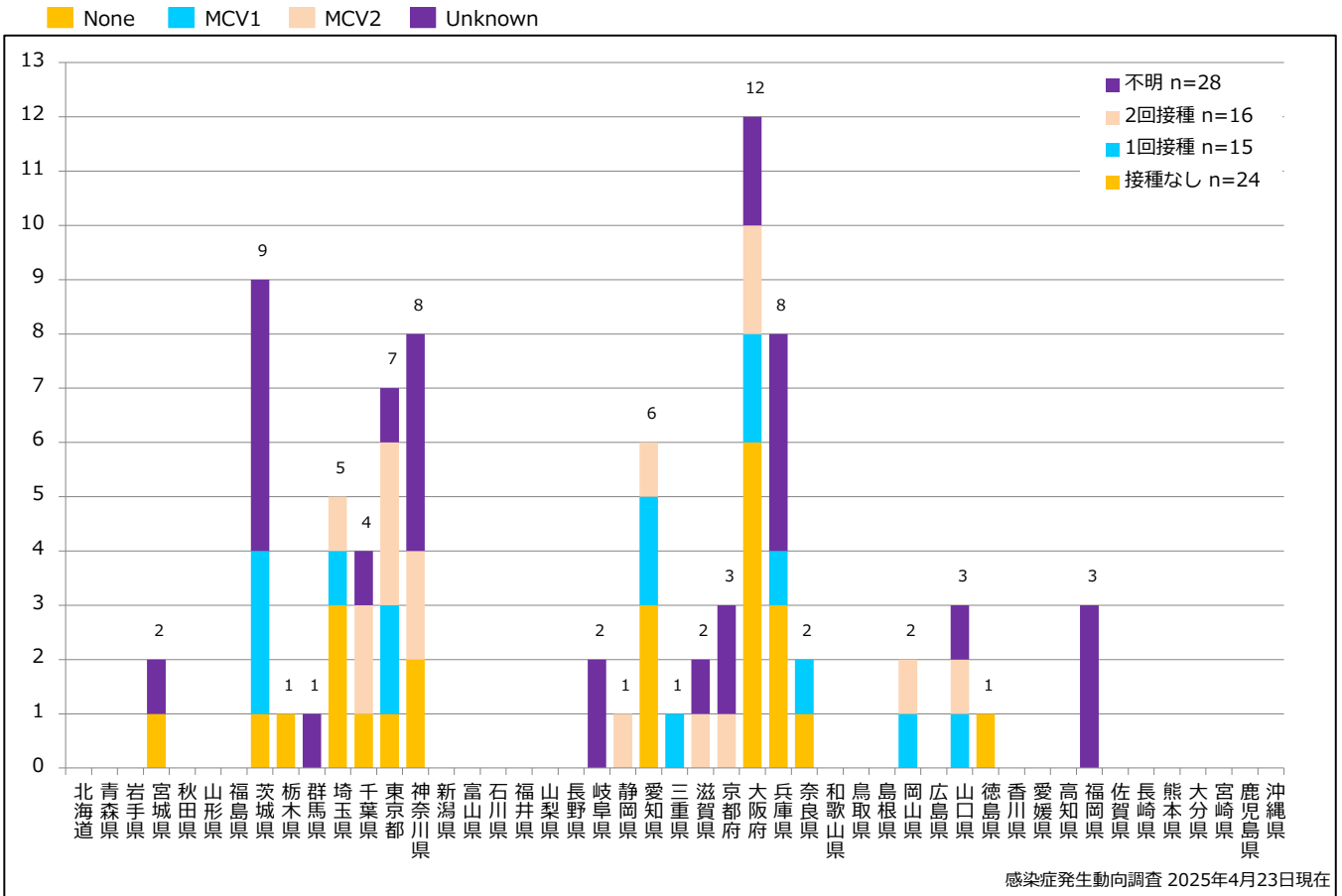
Cumulative measles cases by prefecture and methods of diagnosis, week 1-16, 2025 (as of April 23, 2025)

■ Clinically diagnosed ■ Laboratory diagnosed ■ Modified measles, Laboratory diagnosed



5. 都道府県別接種歴別麻疹累積報告数 2025年 第1~16週 (n=83)

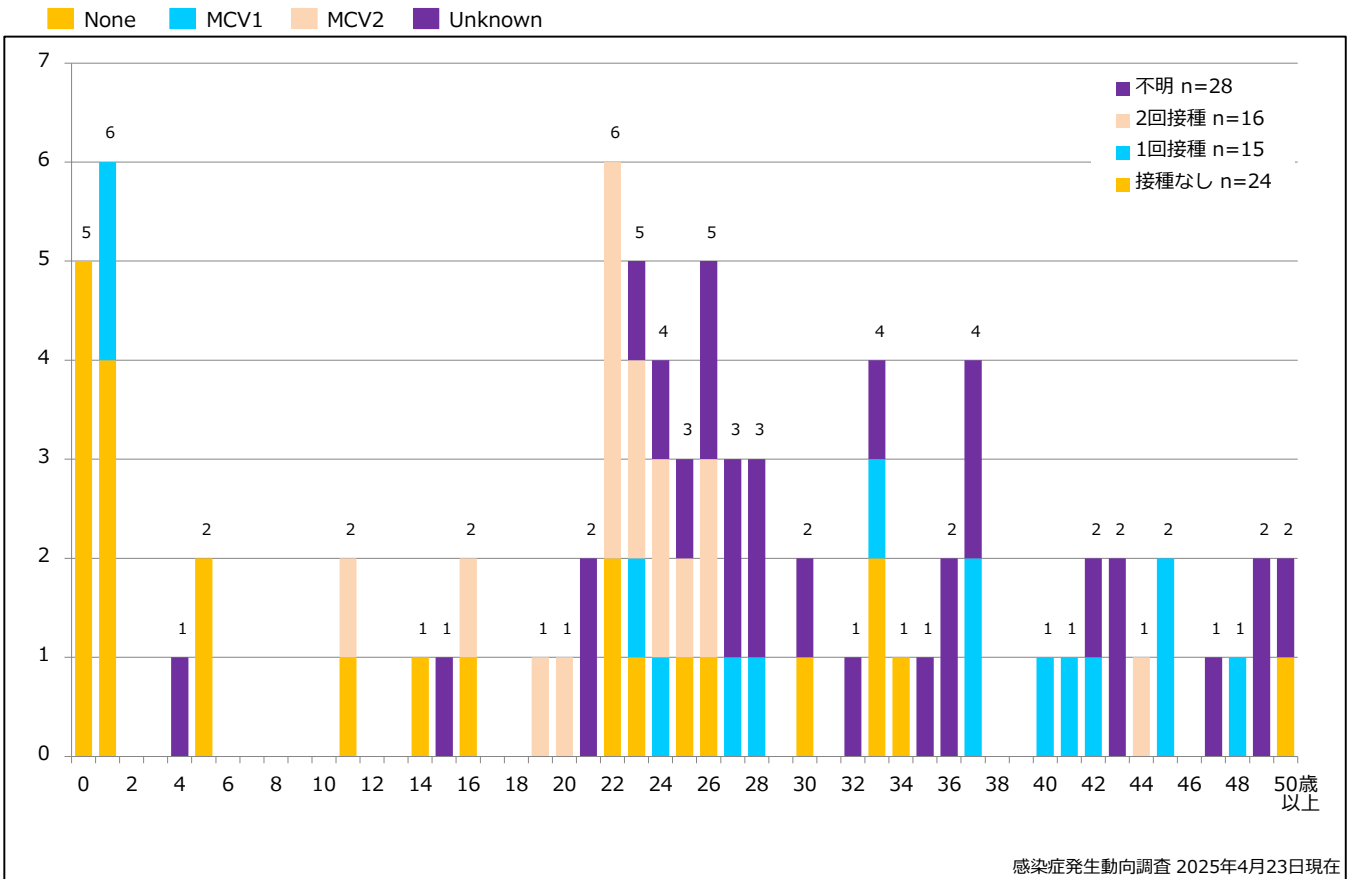
Cumulative measles cases by prefecture and vaccinated status, week 1-16, 2025 (as of April 23, 2025)



感染症発生動向調査 2025年4月23日現在

6. 年齢群別接種歴別麻疹累積報告数 2025年 第1~16週 (n=83)

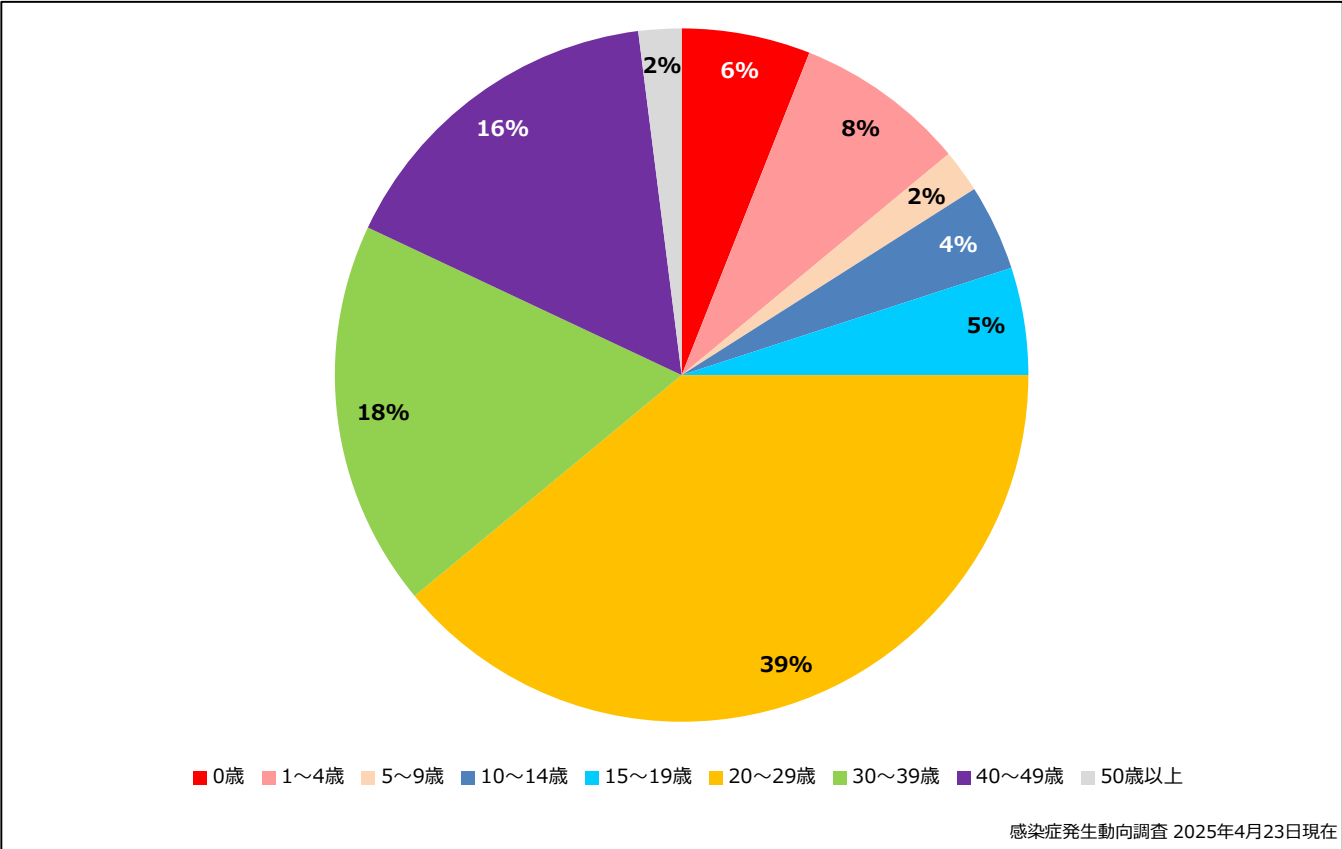
Cumulative measles cases by age and vaccinated status, week 1-16, 2025 (as of April 23, 2025)



感染症発生動向調査 2025年4月23日現在

7. 年齢群別麻疹累積報告数割合 2025年 第1~16週 (n=83)

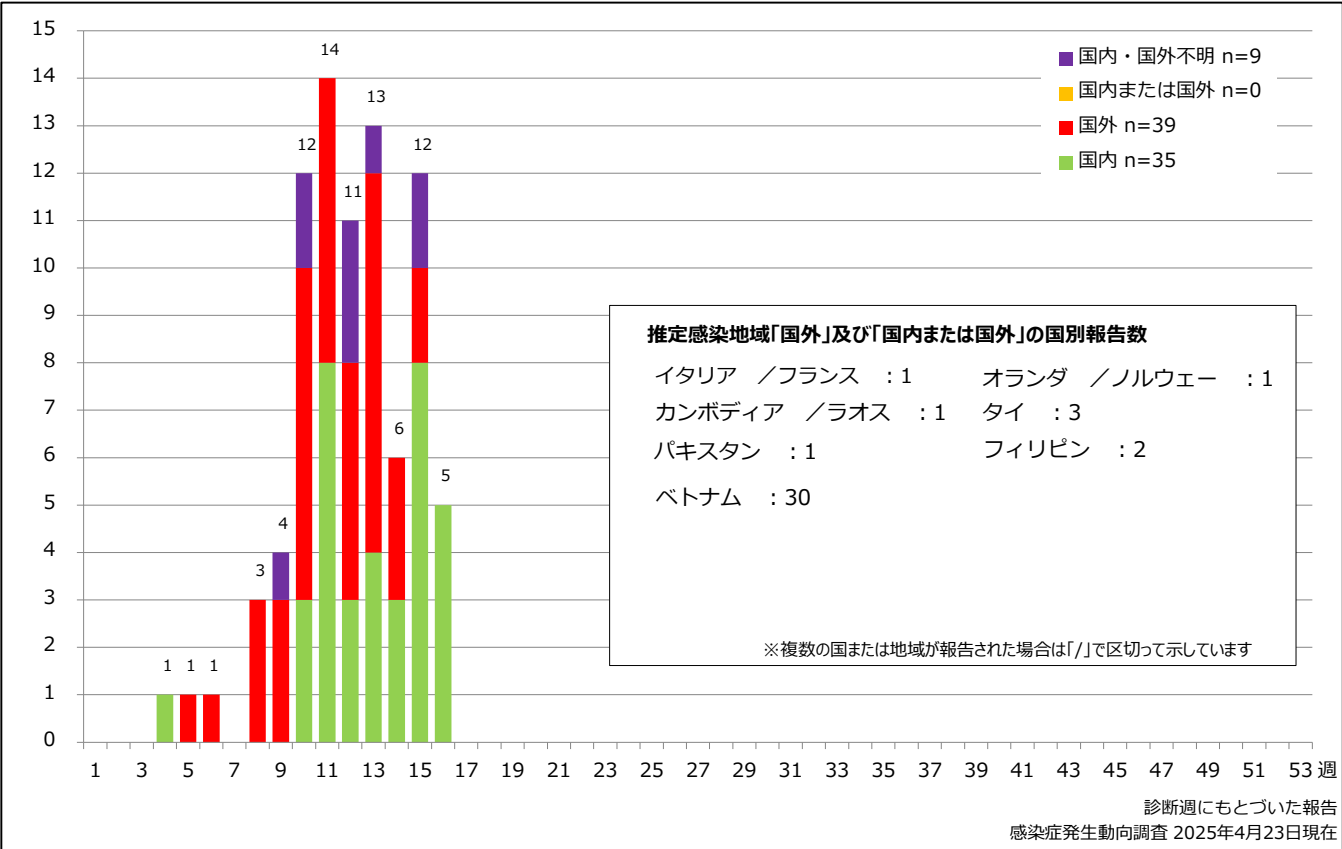
Percentage of cumulative measles cases by age group, week 1-16, 2025 (as of April 23, 2025)



8. 週別推定感染地域(国内・外)別麻疹報告数 2025年 第1~16週 (n=83)

Weekly measles cases by acquired region, week 1-16, 2025 (based on diagnosed week as of April 23, 2025)

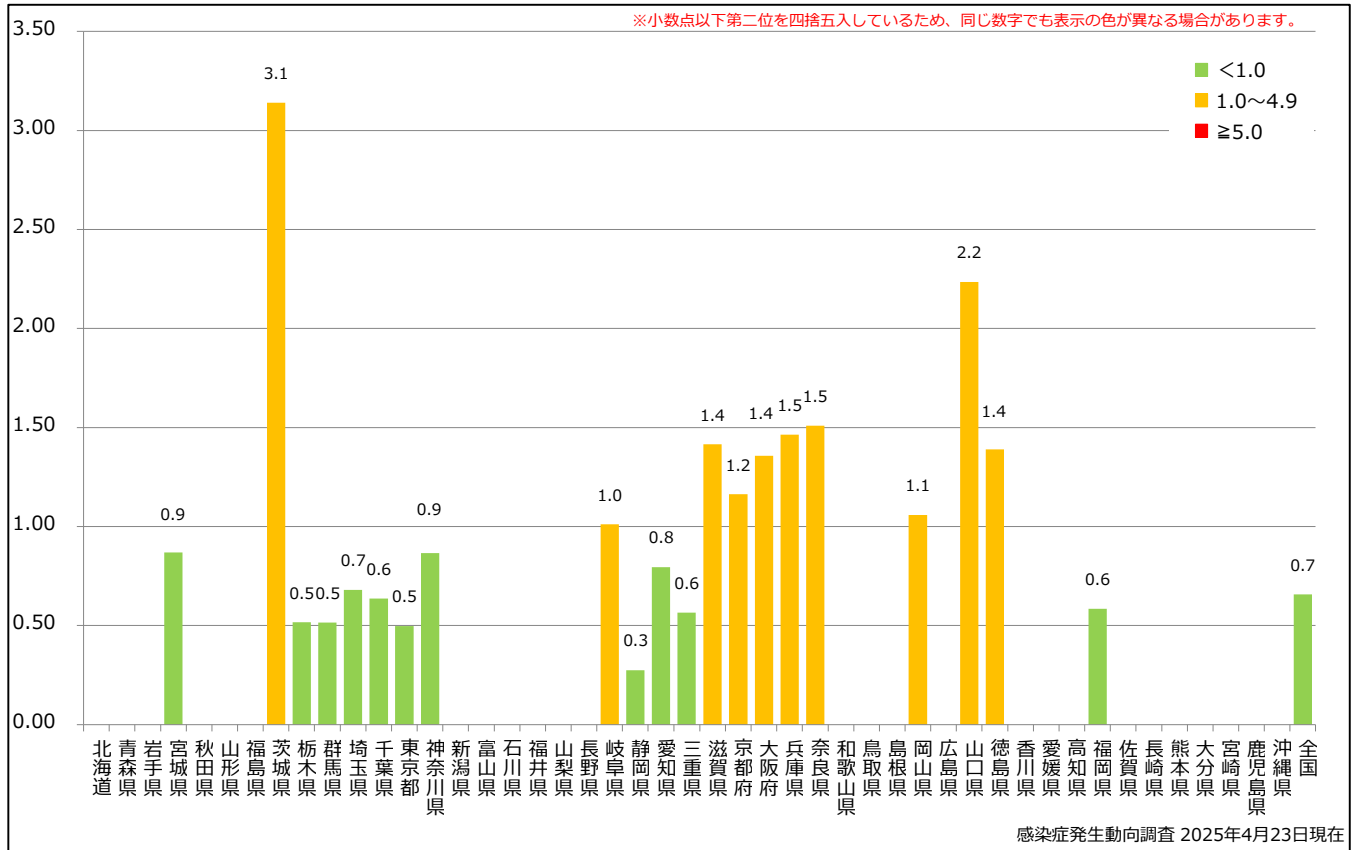
Domestic Imported Unspecified Unknown



9. 都道府県別人口百万人あたり麻疹報告数 2025年 第1~16週 (n=83)

Reported measles cases per 1 million population by prefecture, week 1-16, 2025 (as of April 23, 2025)

■ <1.0 ■ 1.0~4.9 ■ ≥5.0



10. 都道府県別麻疹週別報告状況 2025年 第1~16週 感染症発生動向調査

2025年04月23日現在

Weekly measles cases from week 01 to week 16, 2025 (based on diagnosed week as of April 23, 2025)

