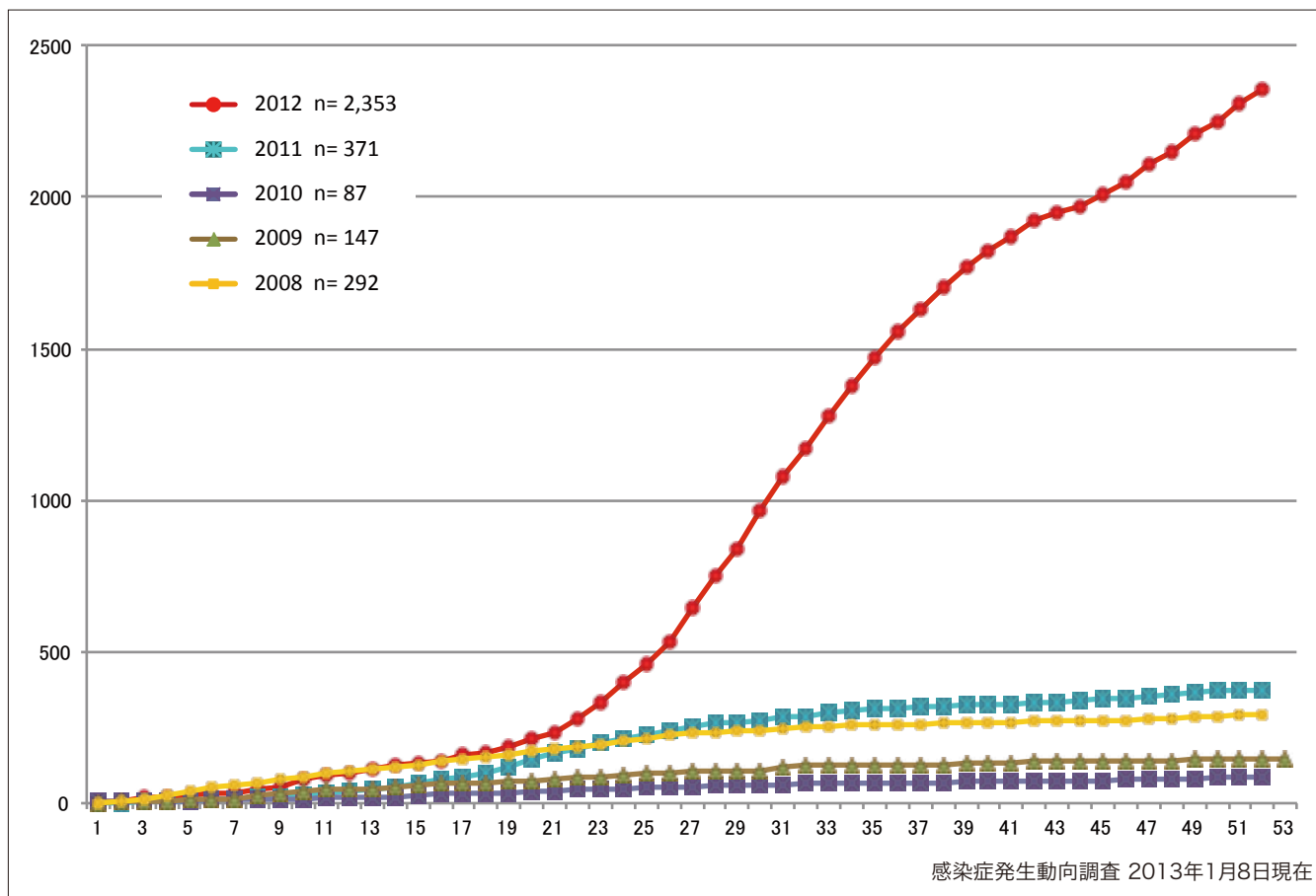


1. 風しん累積報告数の推移2008～2012年（第1～52週）

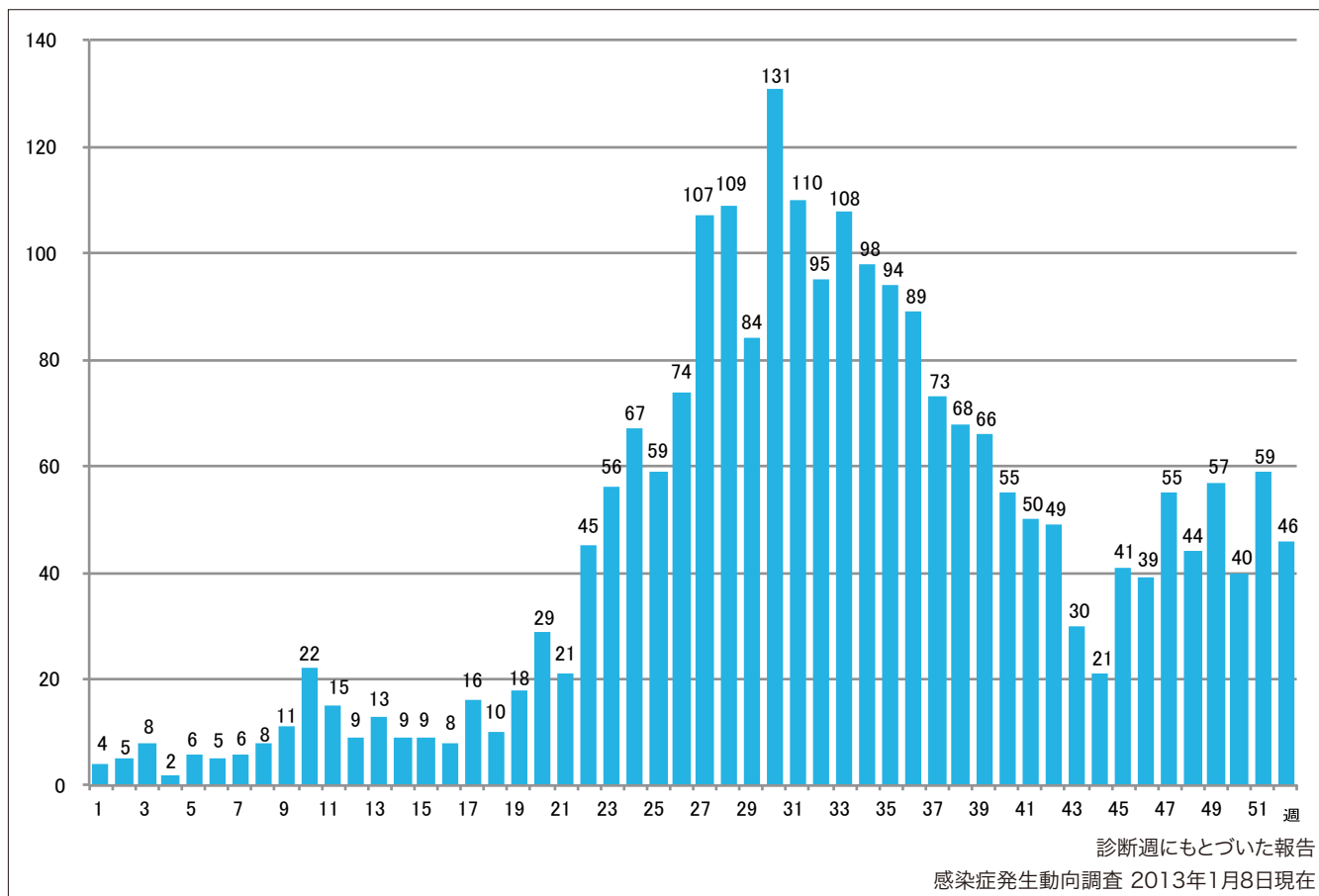
Cumulative number of rubella cases by week, 2008-2012 (week1-52)

(based on diagnosed week as of January 8, 2013).



2. 週別風しん報告数 2012年 第1～52週（n=2,353）

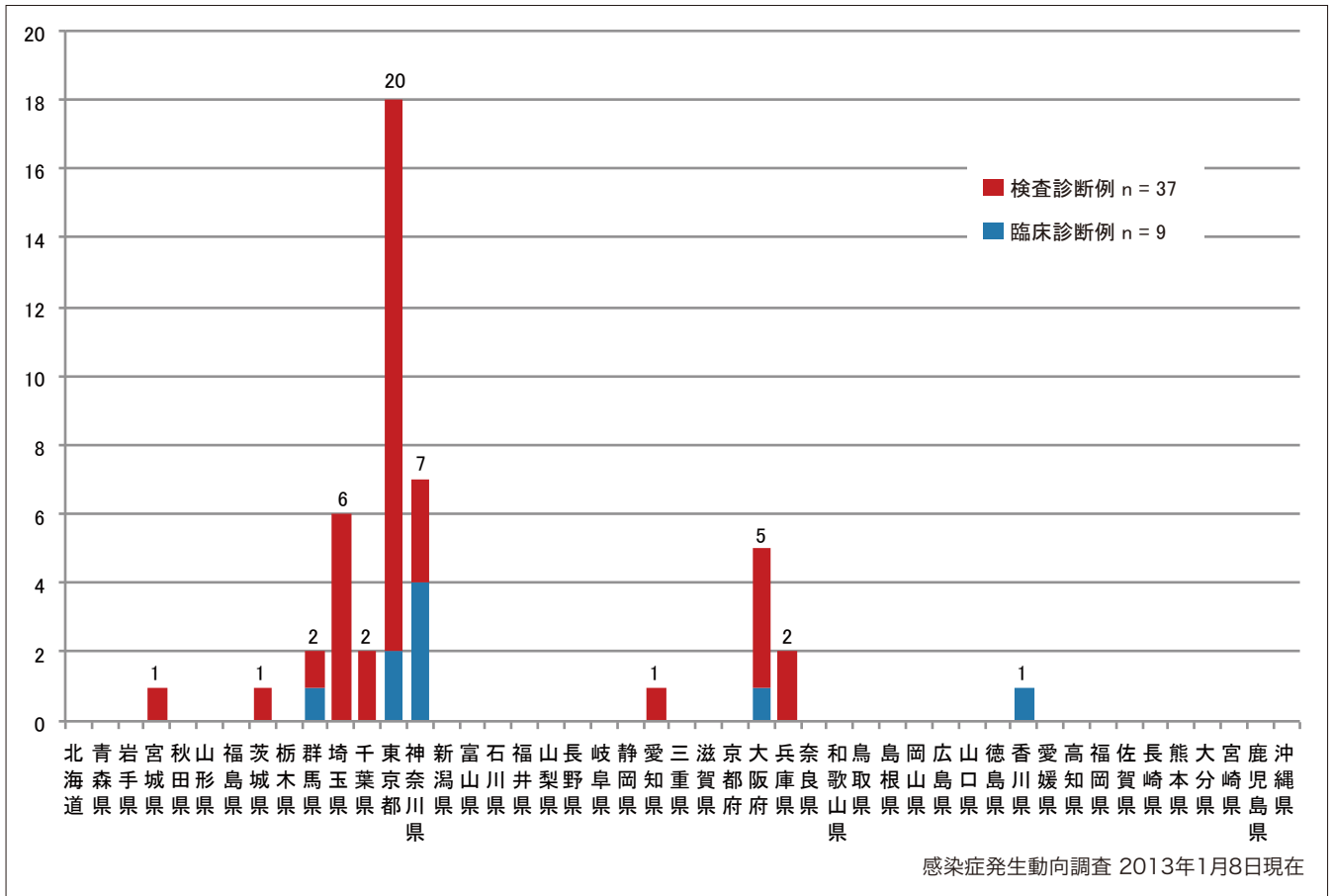
Weekly rubella cases from week 1 to week 52, 2012 (based on diagnosed week as of January 8, 2013).



3. 都道府県別病型別風しん報告数 2012年 第52週 (n=46)

Reported rubella cases by prefecture and methods of diagnosis in week 52, 2012 (as of January 8, 2013).

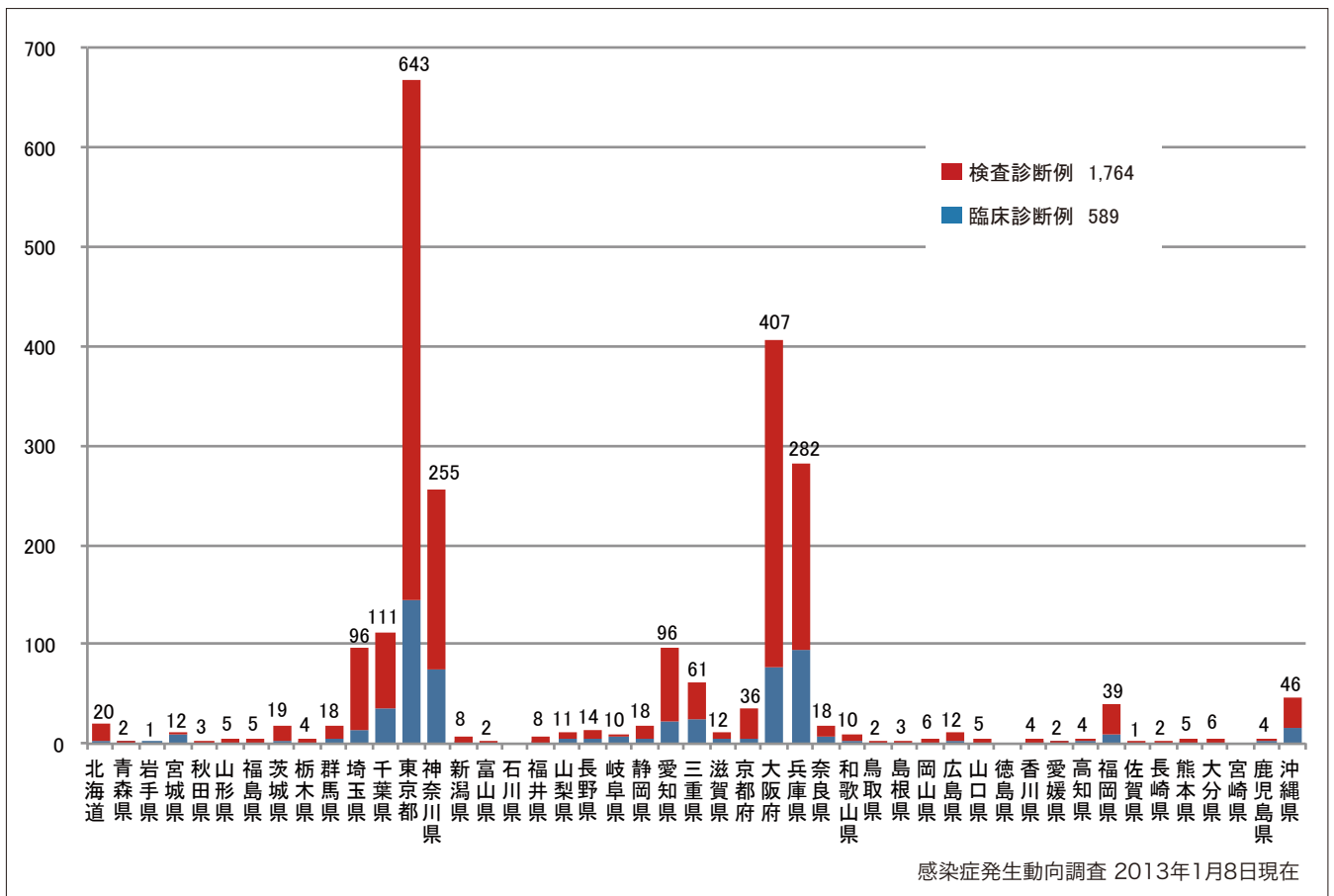
■ Clinically diagnosed ■ Laboratory diagnosed



4. 都道府県別病型別風しん累積報告数 2012年 第1~52週 (n=2,353)

Cumulative rubella cases by prefecture and methods of diagnosis from week 1 to week 52, 2012 (as of January 8, 2013).

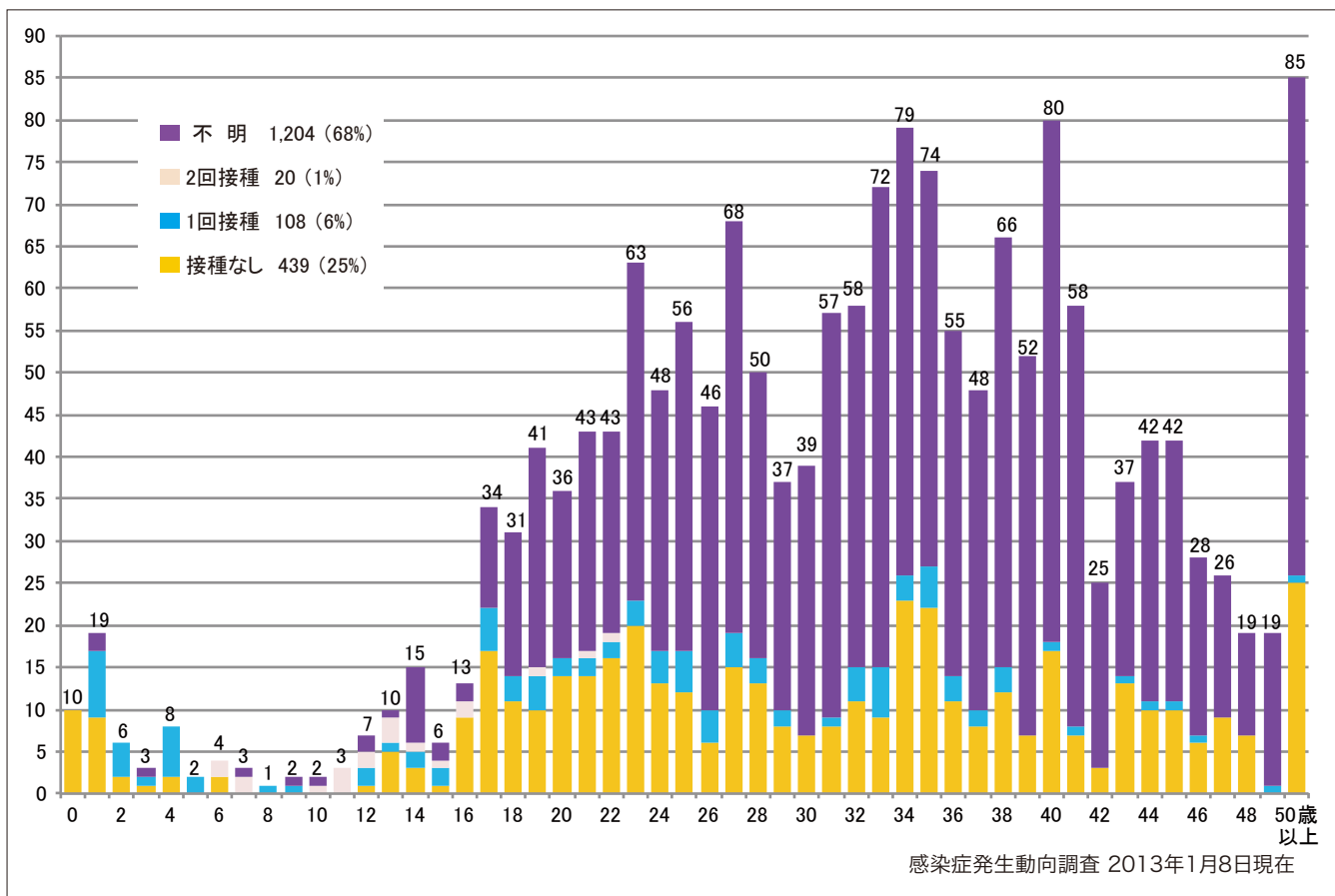
■ Clinically diagnosed ■ Laboratory diagnosed



5-1. 年齢群別接種歴別風しん累積報告数 (男性) 2012年 第1~52週 (n=1,771)

Cumulative rubella cases (male) by age and vaccinated status from week 1 to week 52, 2012 (as of January 8, 2013).

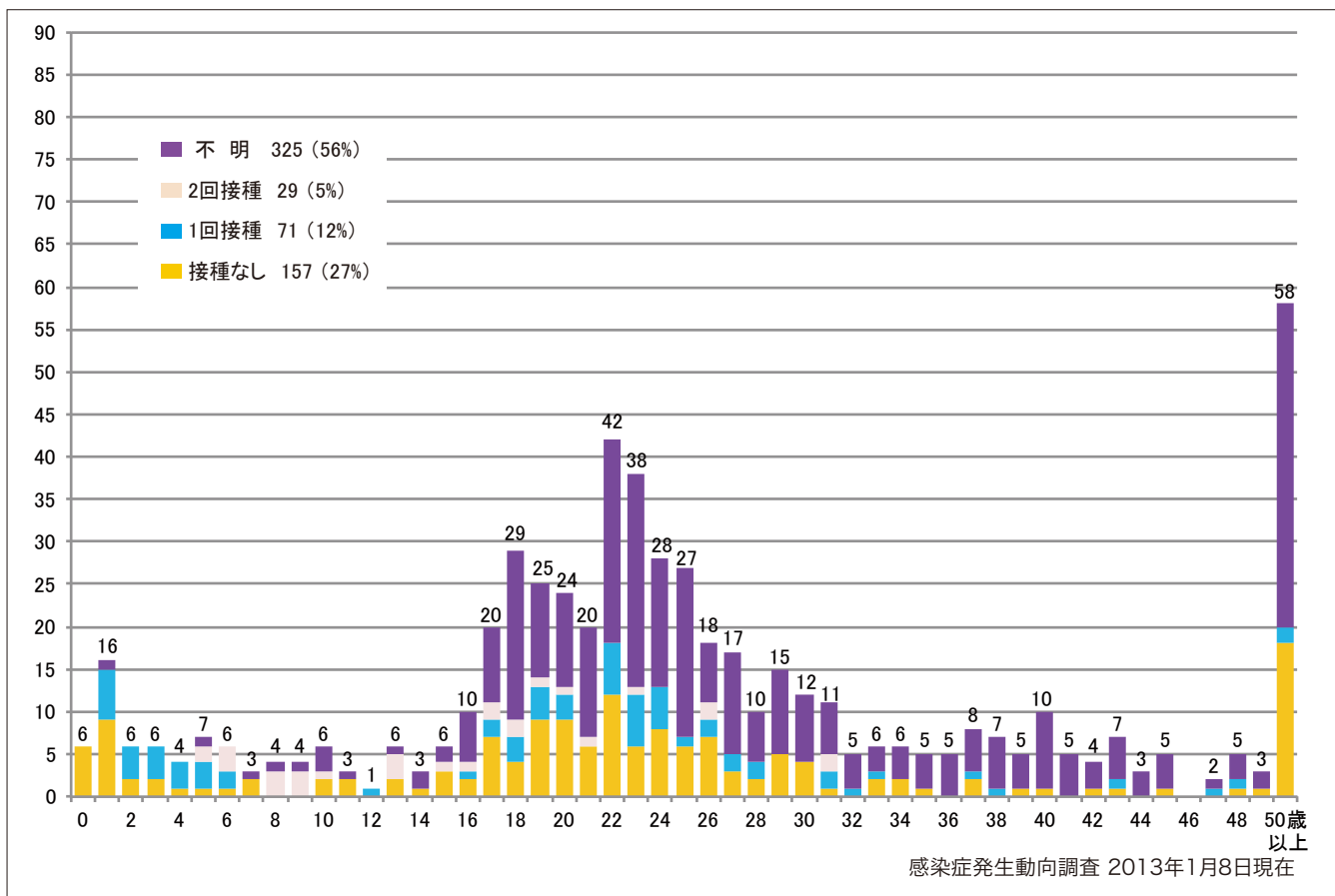
None RCV1 RCV2 Unknown



5-2. 年齢群別接種歴別風しん累積報告数 (女性) 2012年 第1~52週 (n=582)

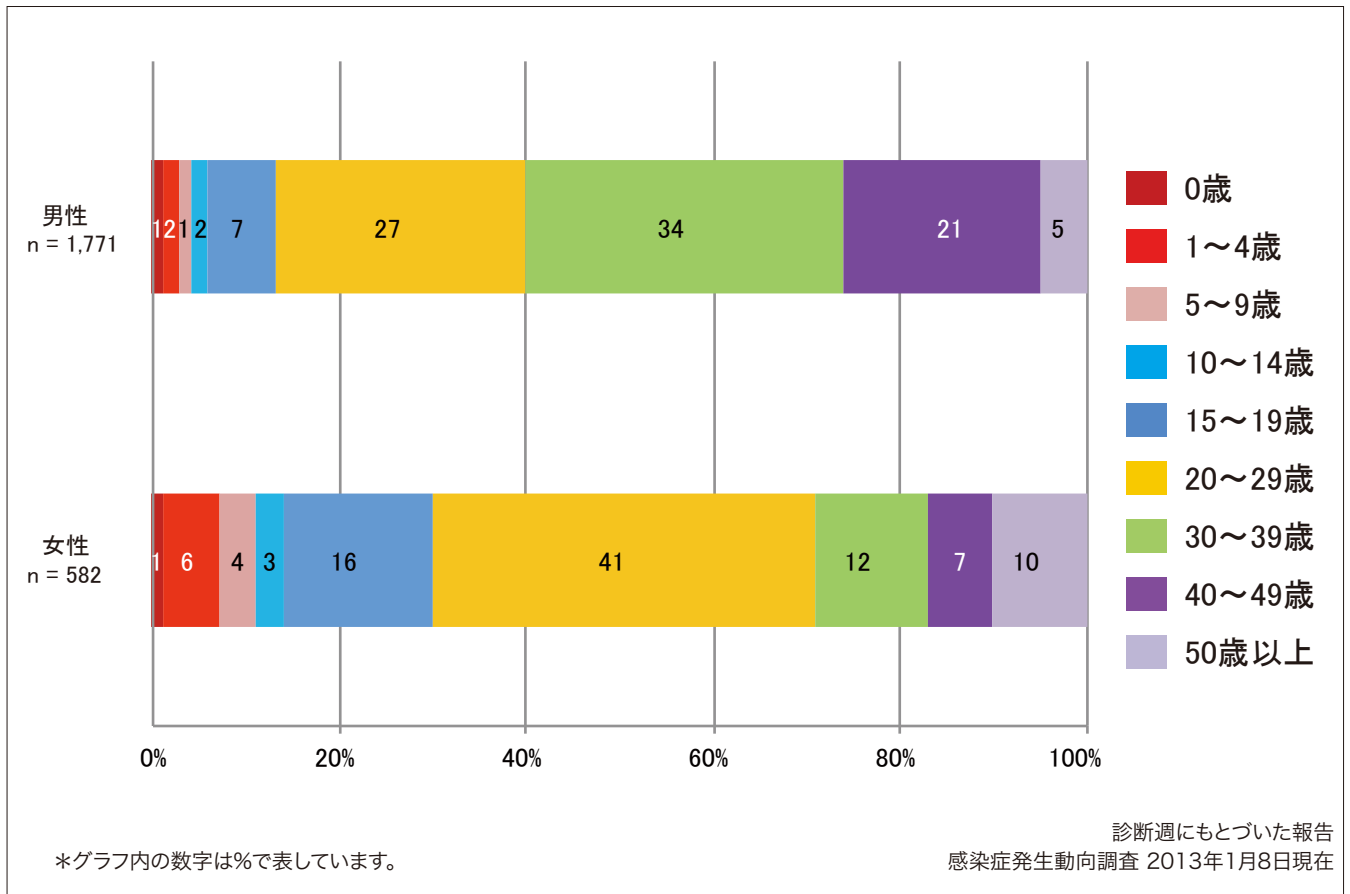
Cumulative rubella cases (female) by age and vaccinated status from week 1 to week 52, 2012 (as of January 8, 2013).

None RCV1 RCV2 Unknown



6. 年齢群別風しん累積報告数割合（男女別） 2012年 第1～52週（n=2,353）

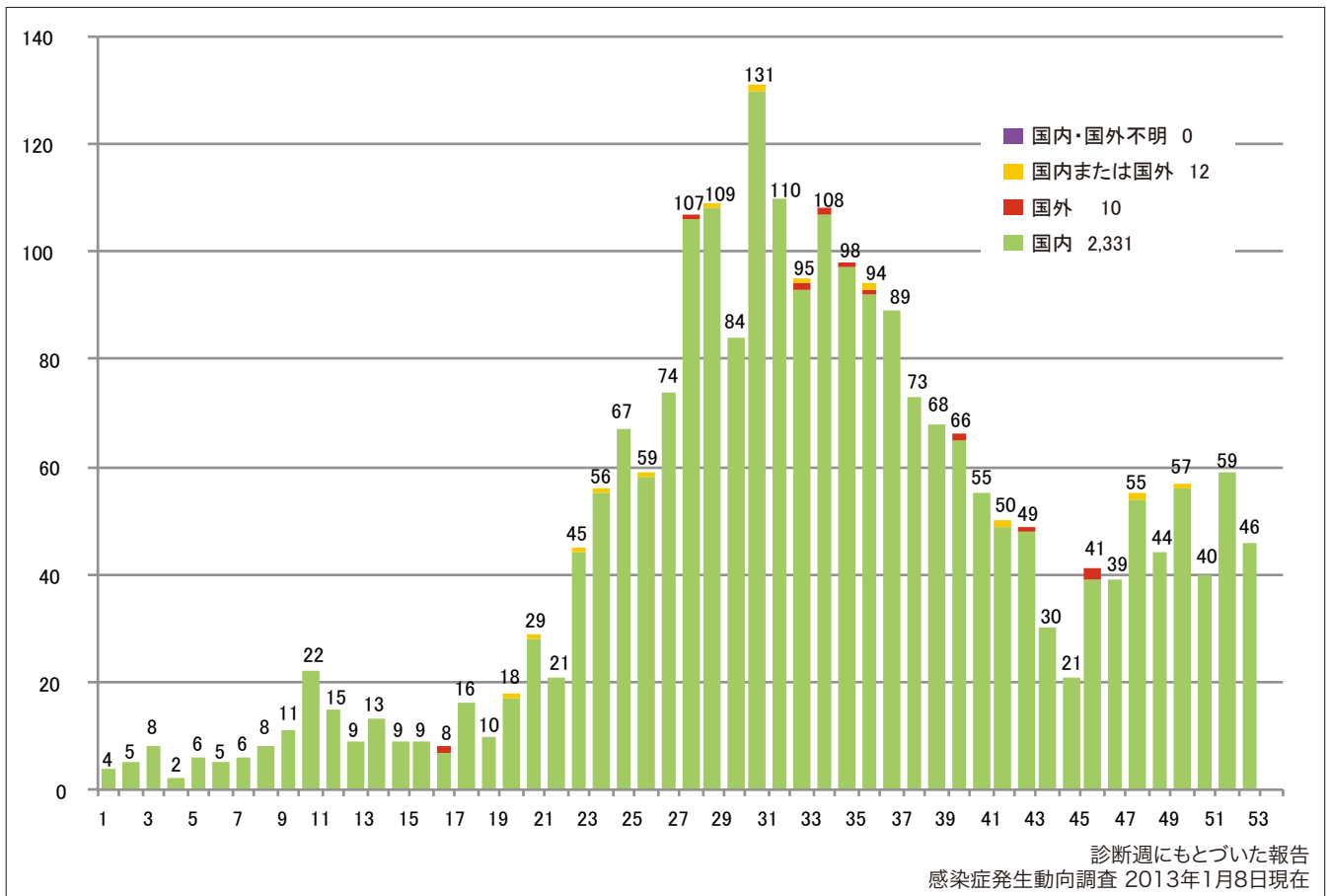
Percentage of cumulative rubella cases (upper: male, bottom: female) by age group from week 1 to week 52, 2012 (as of January 8, 2013).



7. 週別推定感染地域（国内・外）別風しん報告数 2012年 第1～52週（n=2,353）

Weekly rubella cases by acquired region from week 1 to week 52, 2012
(based on diagnosed week as of January 8, 2013).

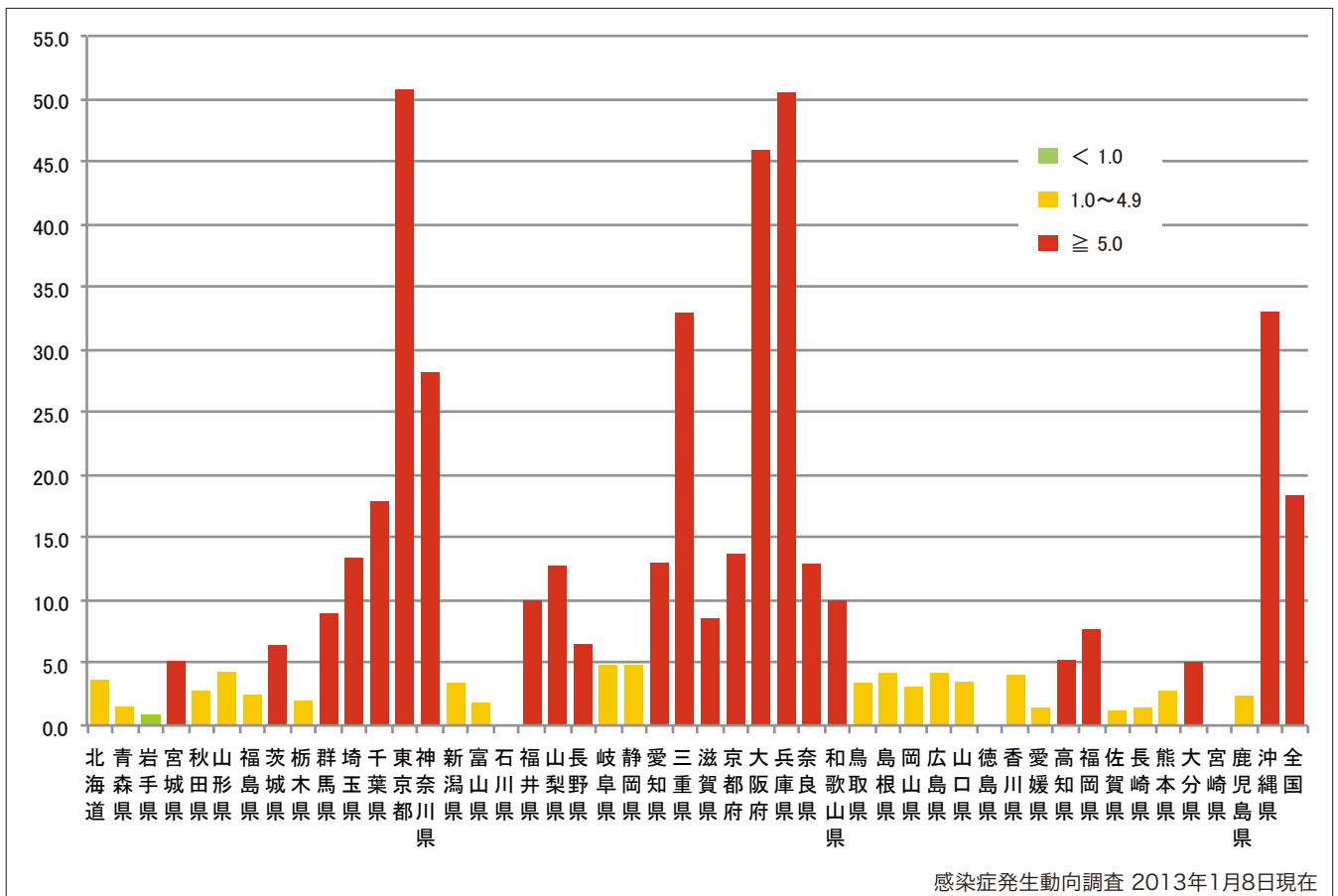
■ Domestic cases ■ Imported cases ■ Unspecified ■ Unknown



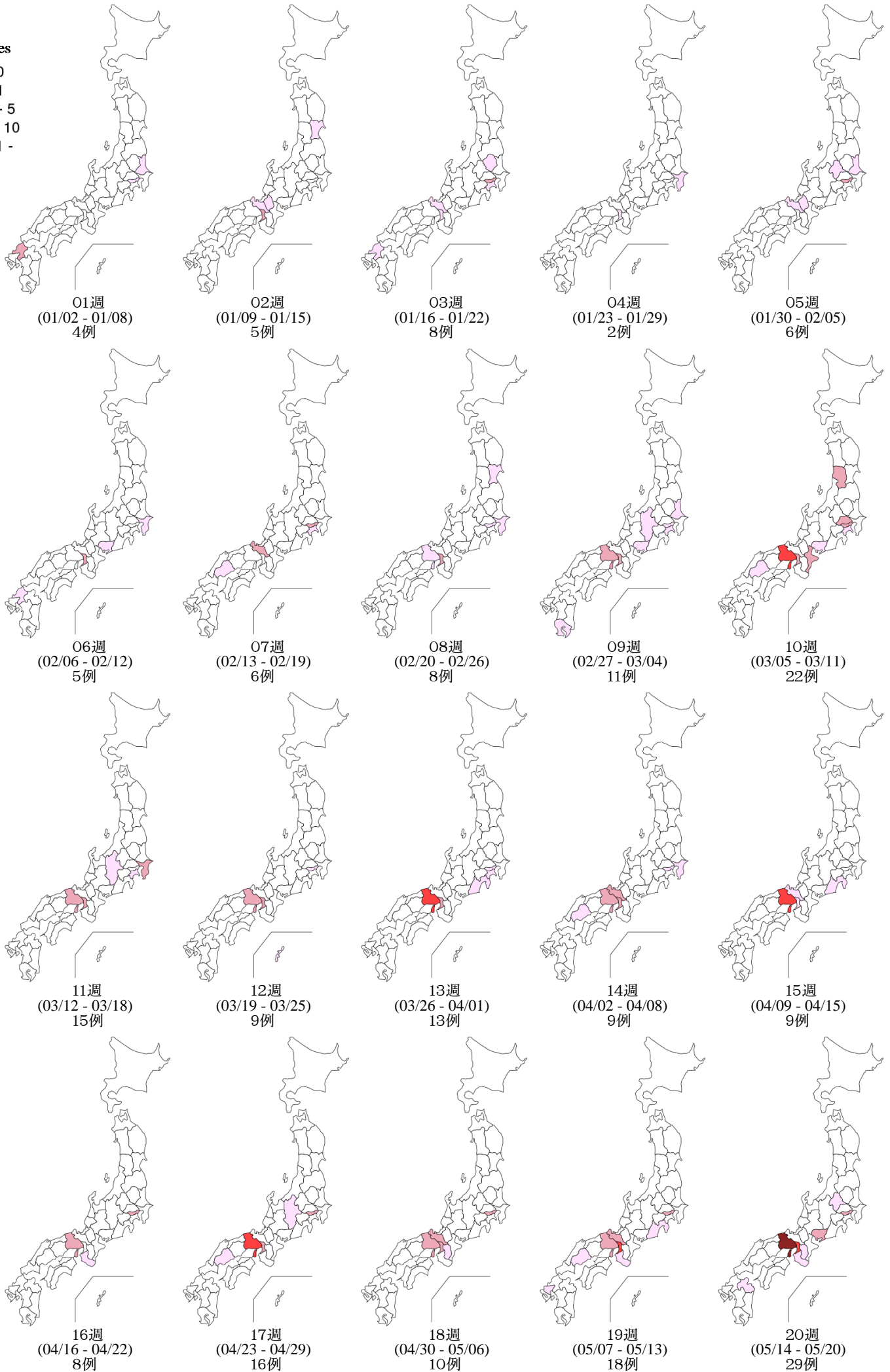
8. 都道府県別人口百万人あたり風しん報告数 2012年 第1～52週（n=2,353）

Number of reported cases per 1 million population by prefectures from week 1 to week 52, 2012
(as of January 8, 2013).

■ <1.0 ■ 1.0～4.9 ■ ≥5.0



Weekly rubella cases from week 1 to week 52, 2012 (based on diagnosed week as of January 08, 2013)

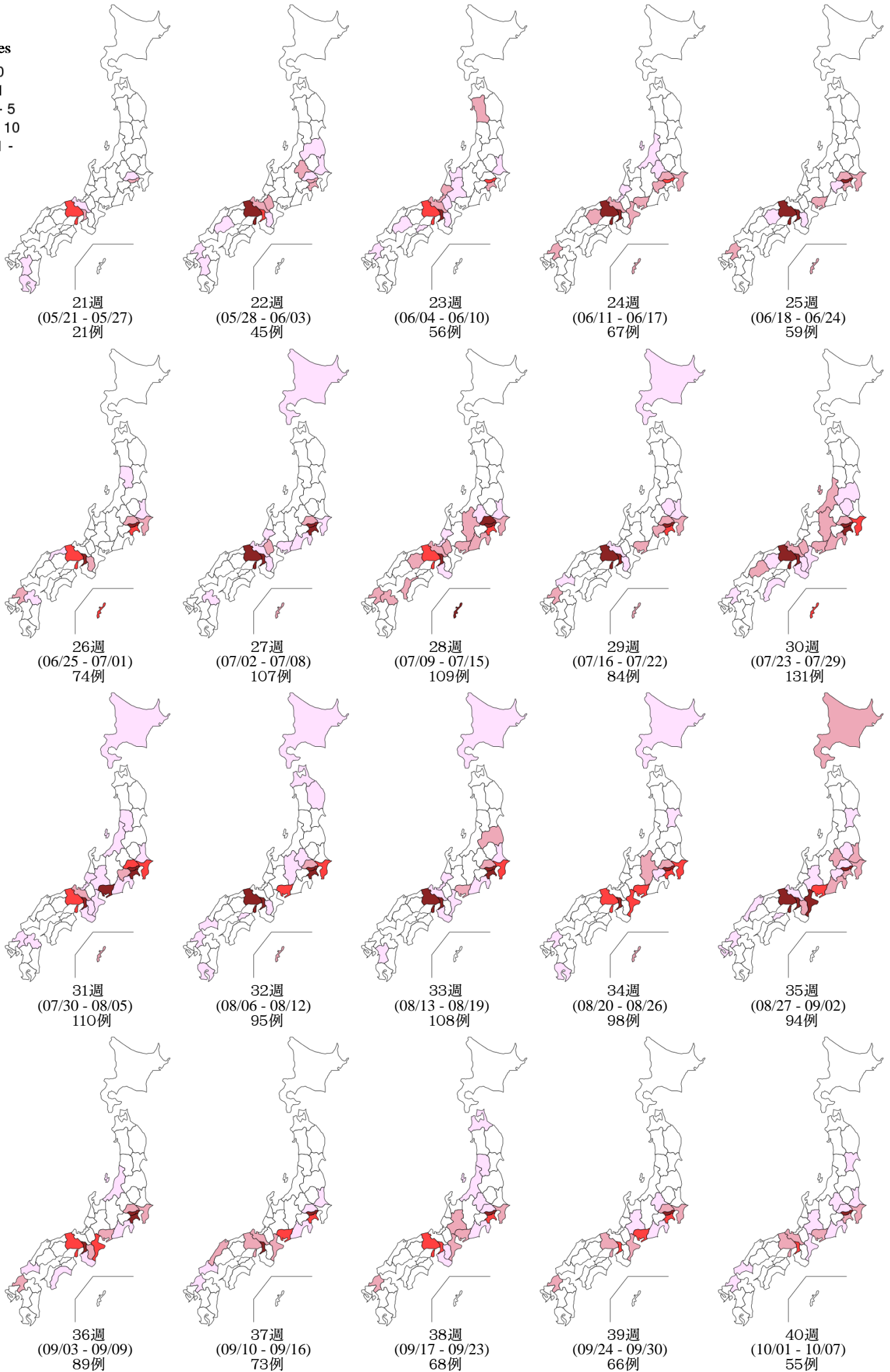


9. 都道府県別風しん週別報告状況 2012 年 第 1~52 週 感染症発生動向調査

2013年01月08日現在

Weekly rubella cases from week 1 to week 52, 2012 (based on diagnosed week as of January 08, 2013)

報告数
No. of cases



9. 都道府県別風しん週別報告状況 2012年 第1~52週 感染症発生動向調査

2013年01月08日現在

Weekly rubella cases from week 1 to week 52, 2012 (based on diagnosed week as of January 08, 2013)

報告数
No. of cases

