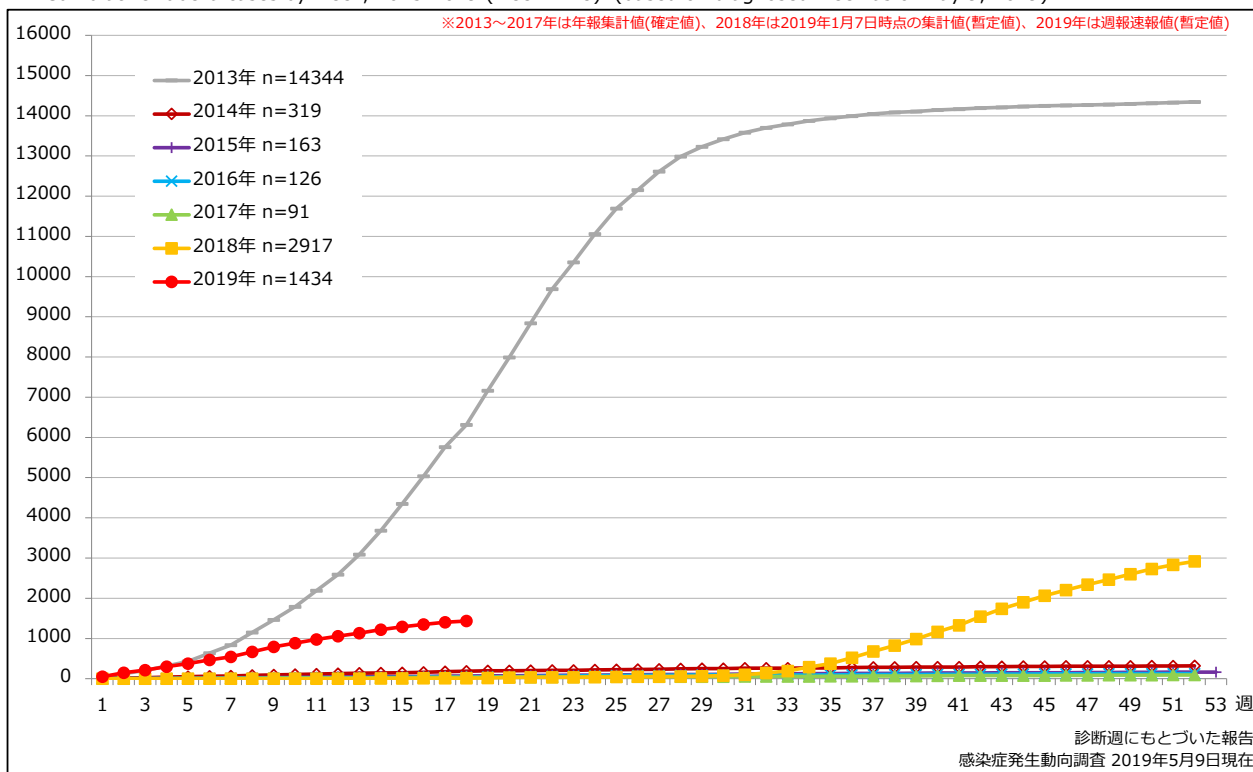


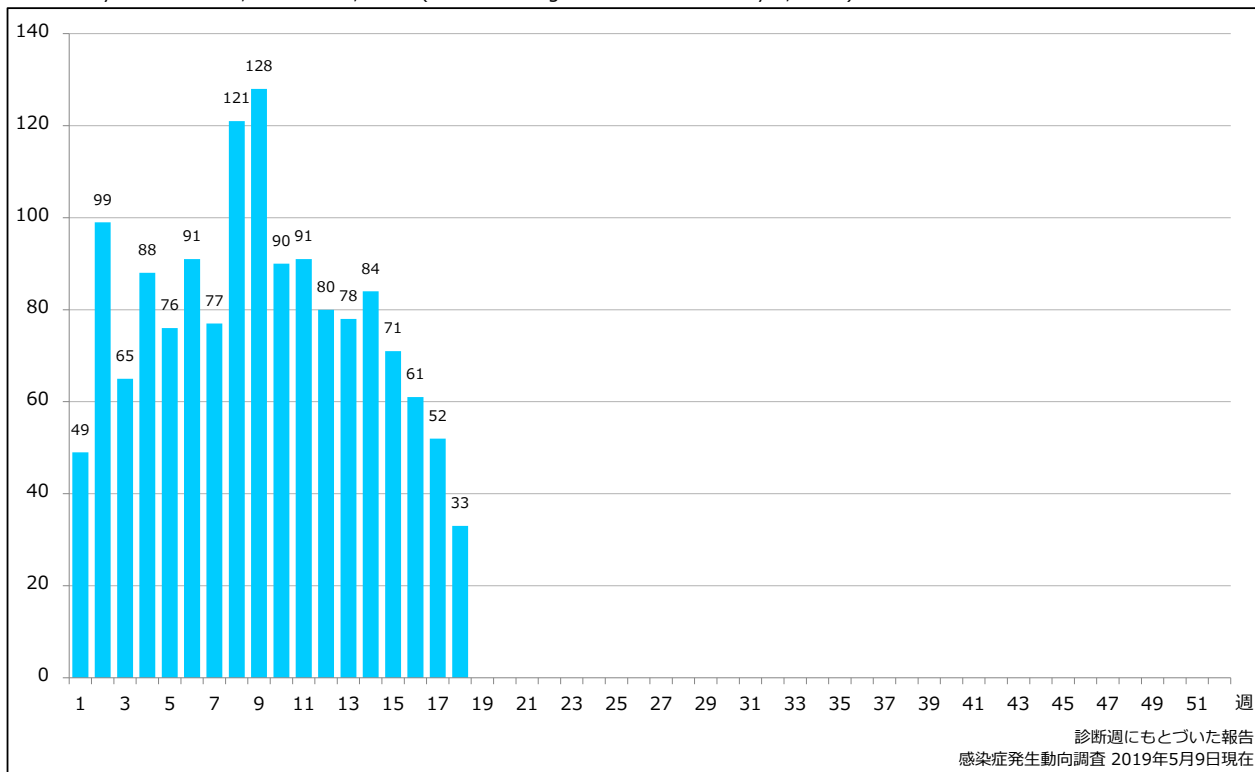
1. 風しん累積報告数の推移 2013～2019年（第1～18週）

Cumulative rubella cases by week, 2013-2019 (week 1-18) (based on diagnosed week as of May 9, 2019)



2. 週別風しん報告数 2019年 第1～18週（n=1434）

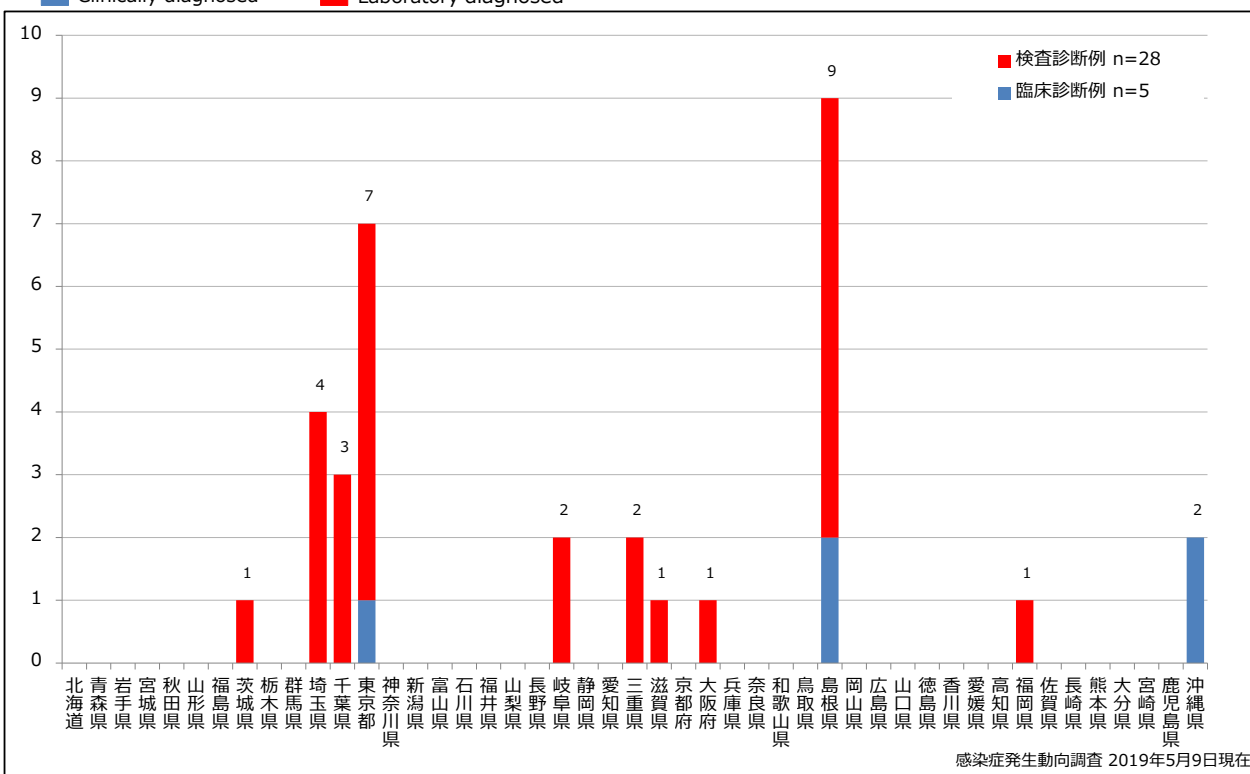
Weekly rubella cases, week 1-18, 2019 (based on diagnosed week as of May 9, 2019)



3. 都道府県別病型別風しん報告数 2019年 第18週 (n=33)

Reported rubella cases by prefecture and methods of diagnosis in week 18, 2019 (as of May 9, 2019)

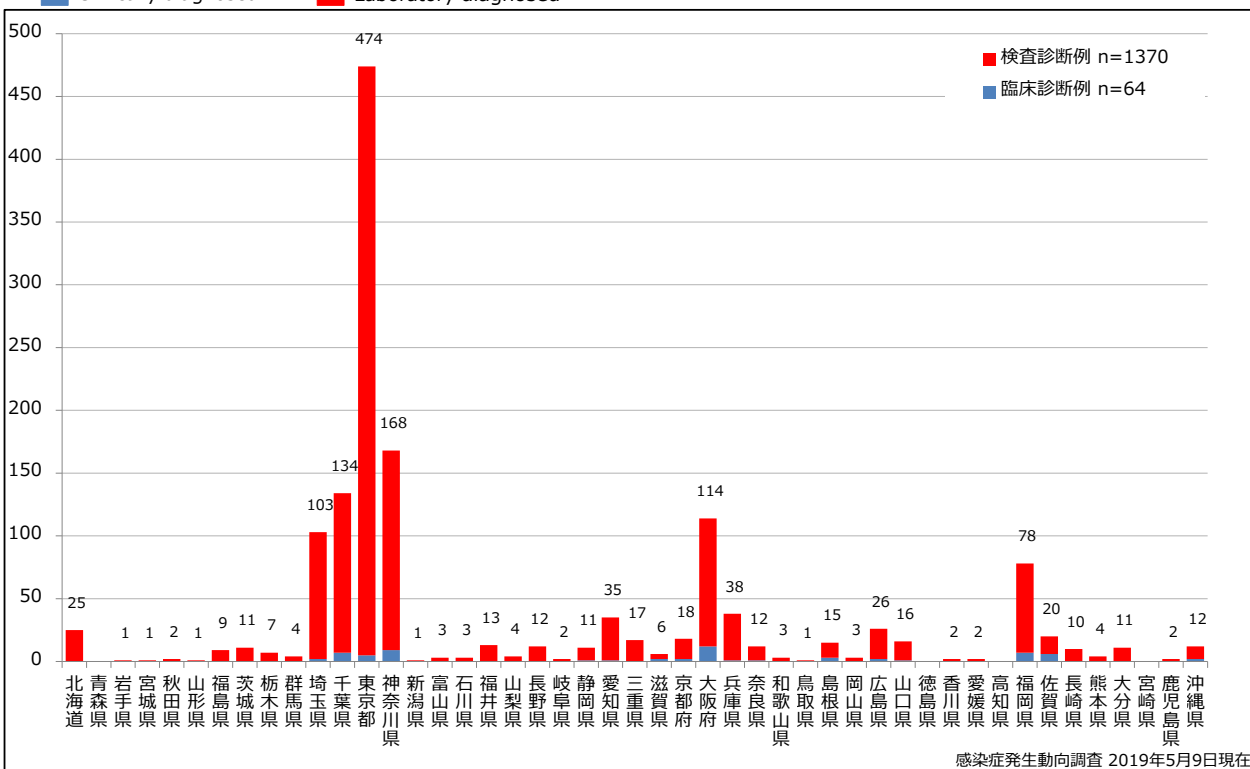
■ Clinically diagnosed ■ Laboratory diagnosed



4. 都道府県別病型別風しん累積報告数 2019年 第1～18週 (n=1434)

Cumulative rubella cases by prefecture and methods of diagnosis, week 1-18, 2019 (as of May 9, 2019)

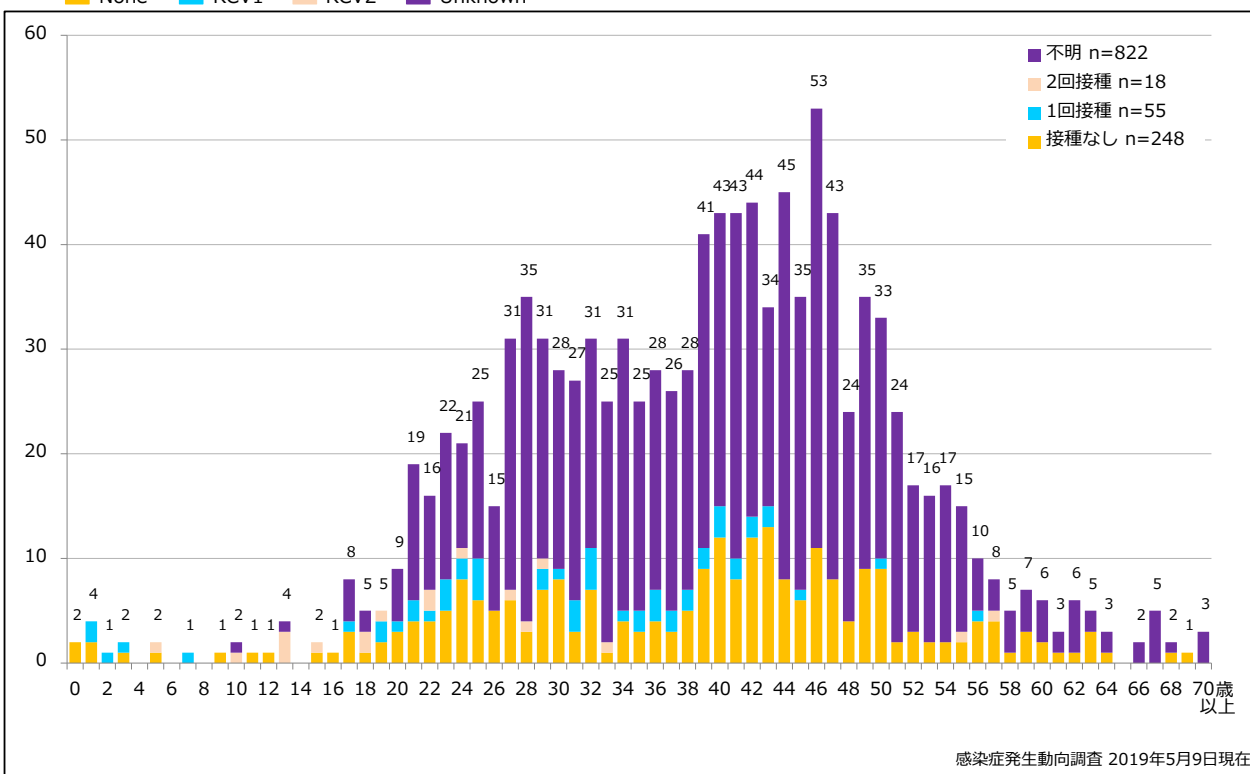
■ Clinically diagnosed ■ Laboratory diagnosed



5-1. 年齢群別接種歴別風しん累積報告数 (男性) 2019年 第1~18週 (n=1143)

Cumulative rubella cases (male) by age and vaccinated status, week 1-18, 2019 (as of May 9, 2019)

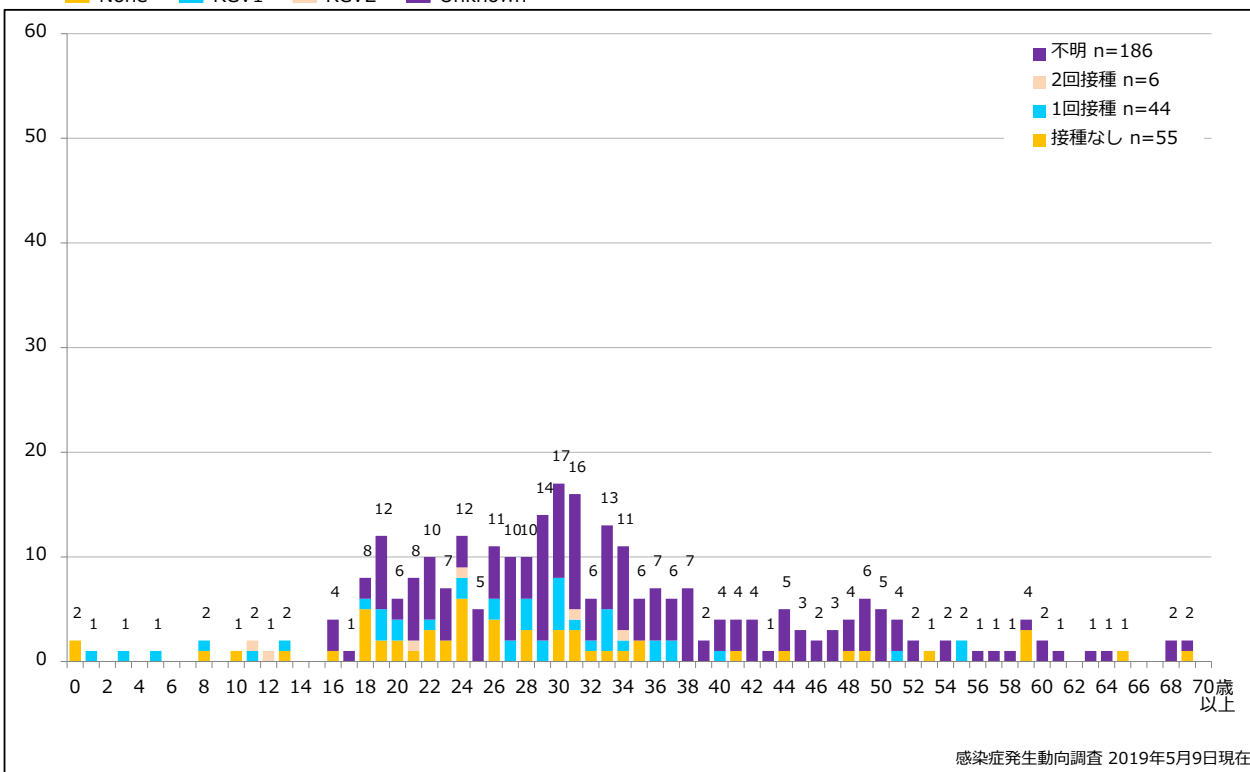
None RCV1 RCV2 Unknown



5-2. 年齢群別接種歴別風しん累積報告数 (女性) 2019年 第1~18週 (n=291)

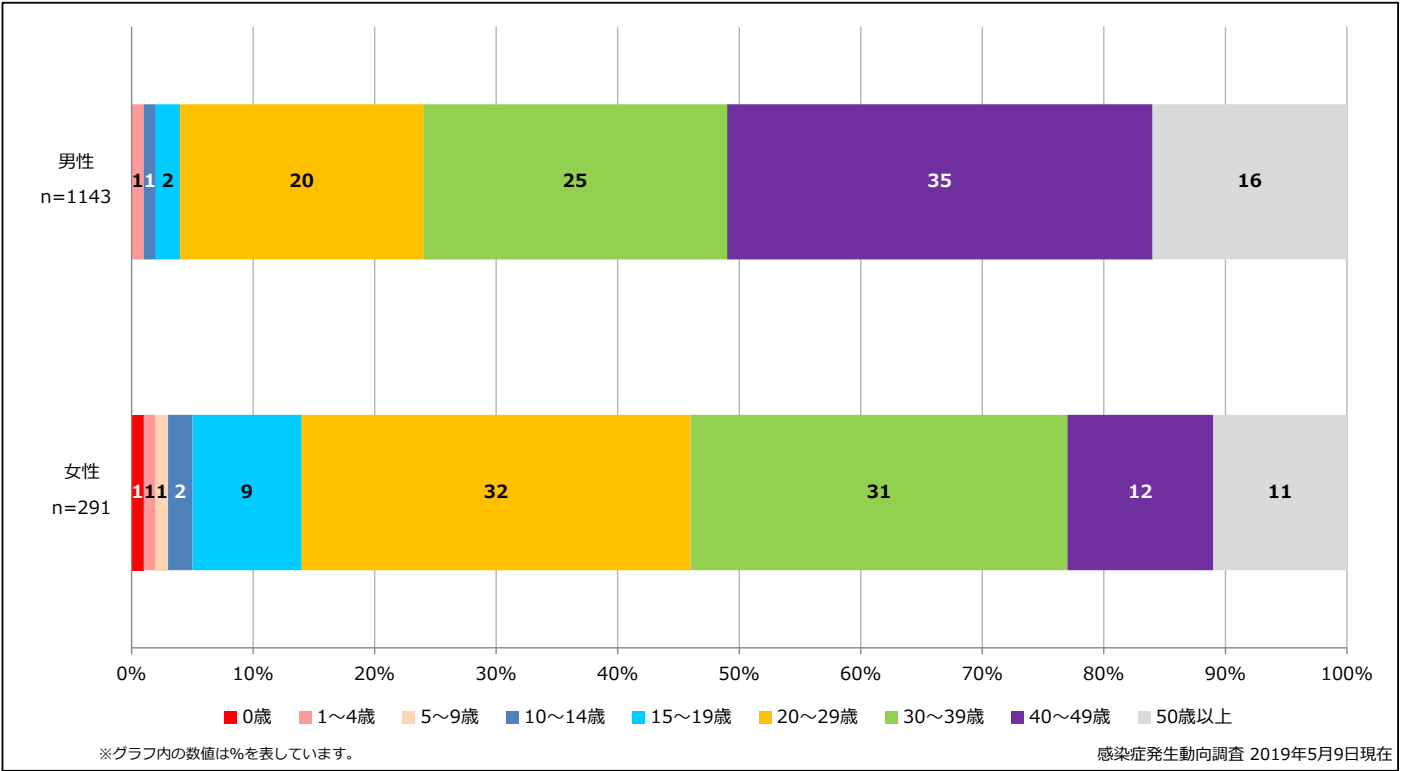
Cumulative rubella cases (female) by age and vaccinated status, week 1-18, 2019 (as of May 9, 2019)

None RCV1 RCV2 Unknown



6. 年齢群別風しん累積報告数割合 (男女別) 2019年 第1～18週 (n=1434)

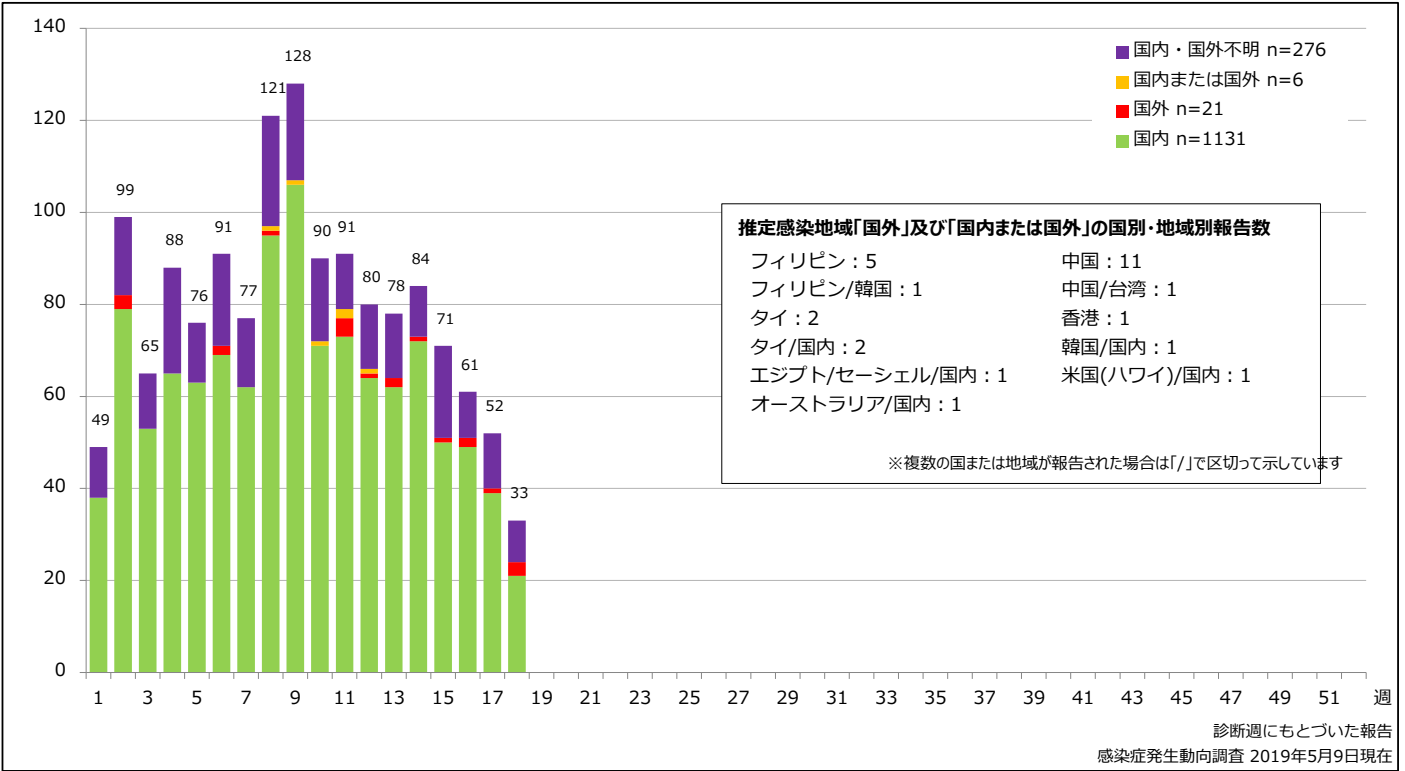
Percentage of cumulative rubella cases (upper: male, bottom: female) by age group, week 1-18, 2019 (as of May 9, 2019)



7. 週別推定感染地域(国内・外)別風しん報告数 2019年 第1～18週 (n=1434)

Weekly rubella cases by acquired region, week 1-18, 2019 (based on diagnosed week as of May 9, 2019)

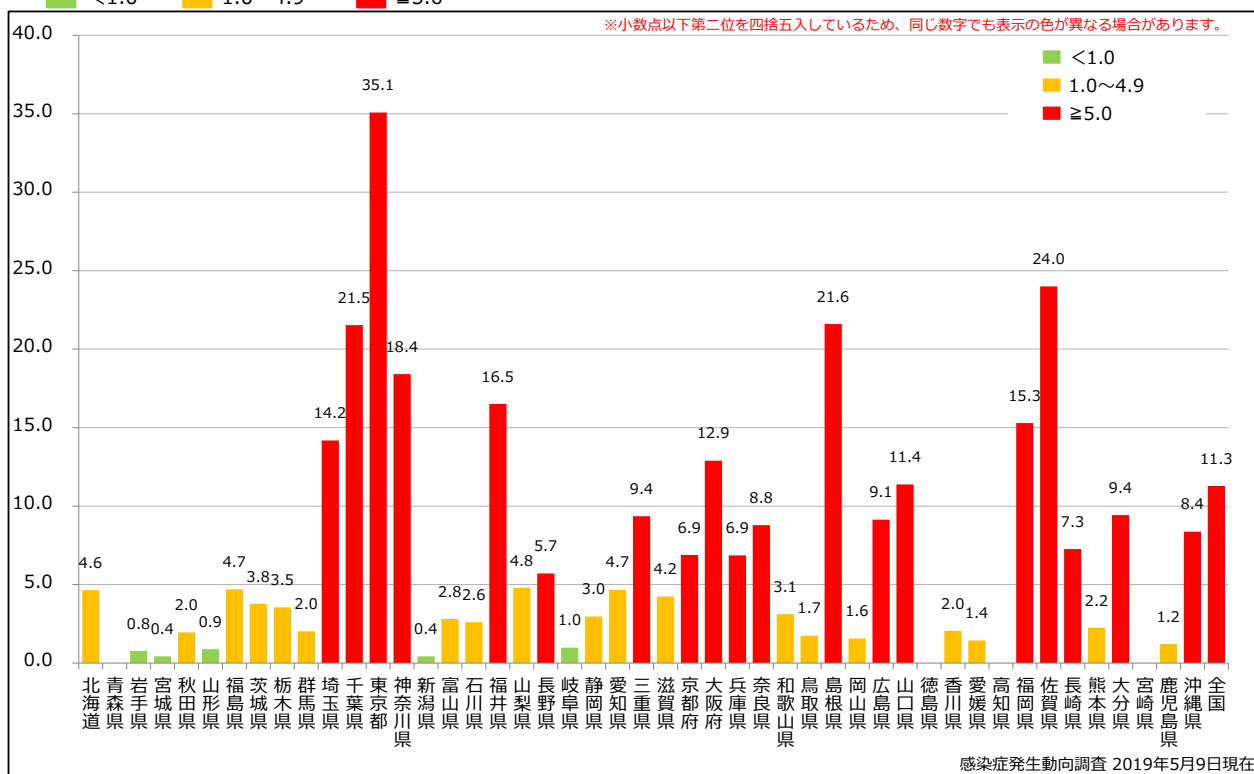
Domestic Imported Unspecified Unknown



8. 都道府県別人口百万人あたり風しん報告数 2019年 第1～18週 (n=1434)

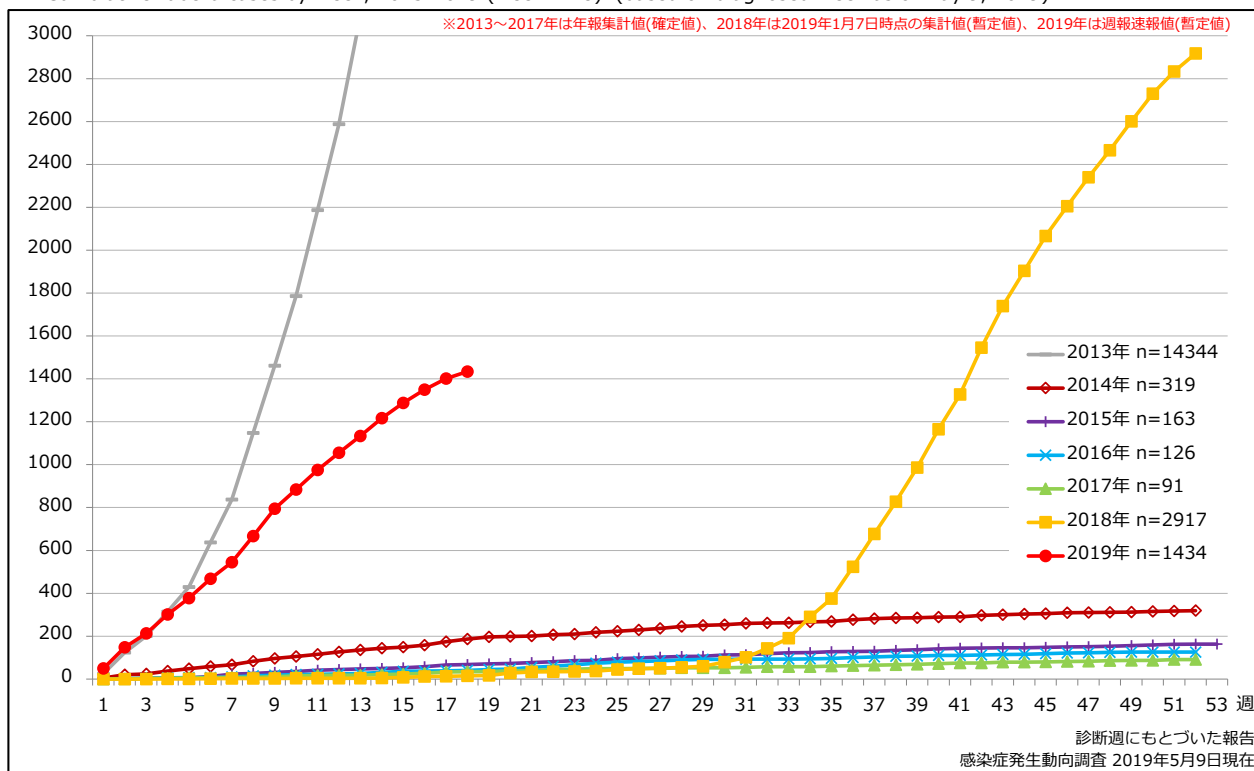
Reported rubella cases per 1 million population by prefecture, week 1-18, 2019 (as of May 9, 2019)

■ <1.0 ■ 1.0～4.9 ■ ≥5.0



追補. 風しん累積報告数の推移 2013～2019年 (第1～18週)

Cumulative rubella cases by week, 2013-2019 (week 1-18) (based on diagnosed week as of May 9, 2019)



9. 都道府県別風しん週別報告状況 2019 年 第 1~18 週 感染症発生動向調査

2019年05月09日現在

Weekly rubella cases from week 01 to week 18, 2019 (based on diagnosed week as of May 09, 2019)

