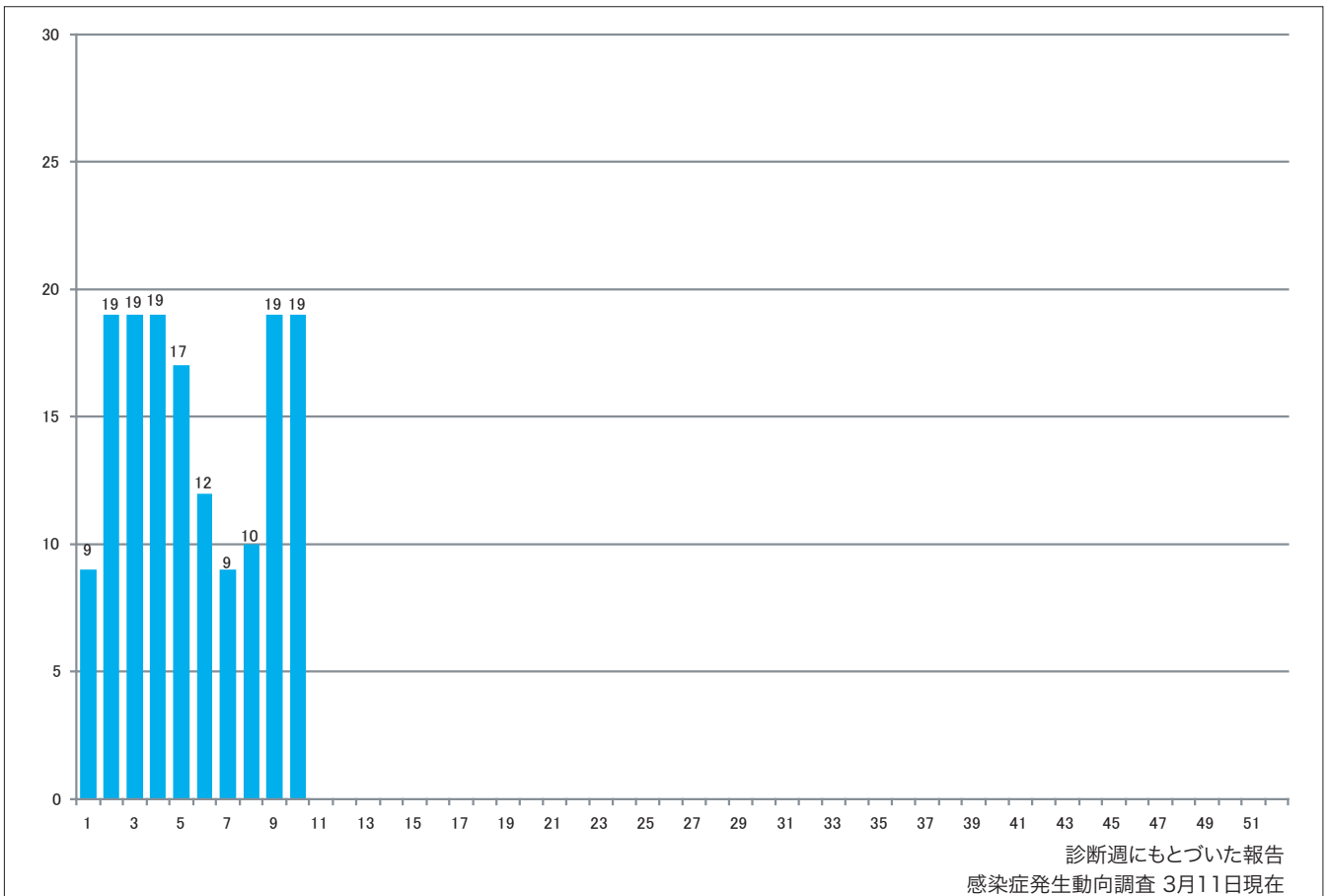


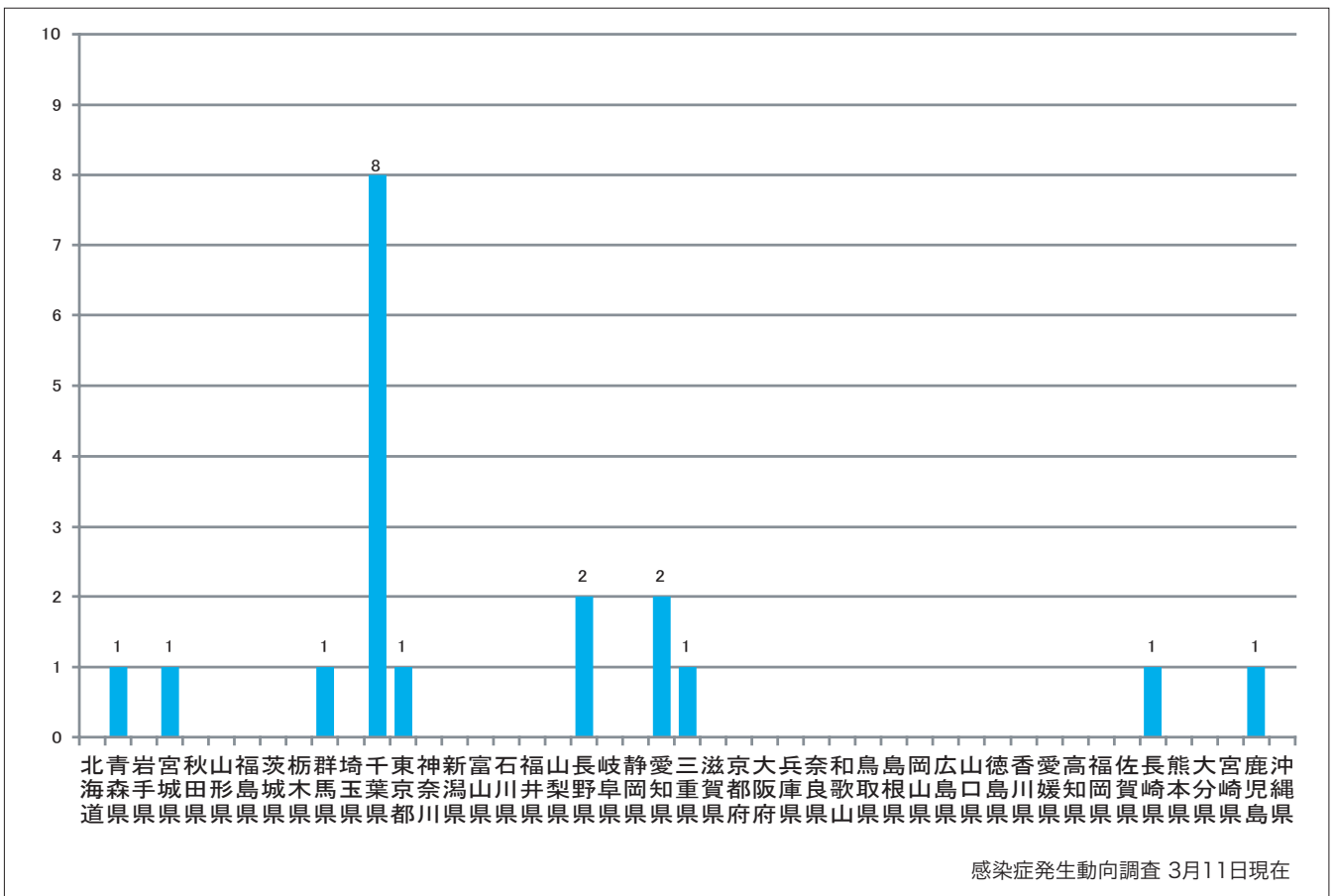
1. 週別麻疹報告数 2009年第1週-10週 (n=152)

Weekly measles cases from week 1 to week 10 in 2009 (based on diagnosed week as of March 11).



2. 都道府県別麻疹報告数2009年第10週 (n=19)

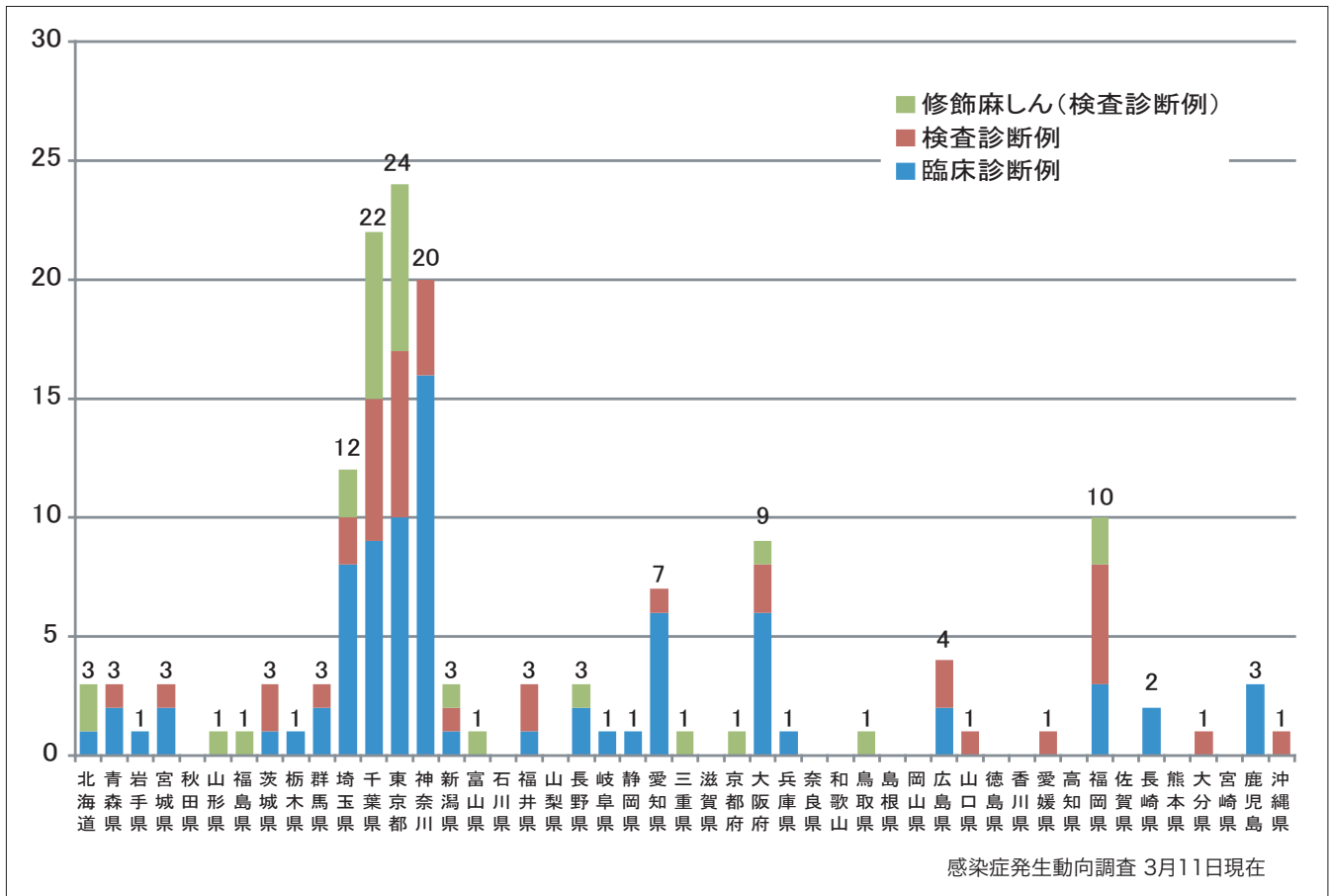
Reported measles cases by prefecture in week 10, 2009 (as of March 11).



3. 都道府県別病型別麻疹累積報告数 2009年第1週-10週 (n=152)

Cumulative measles cases by prefecture and methods of diagnosis from week 1 to week 10, 2009 (as of March 11).

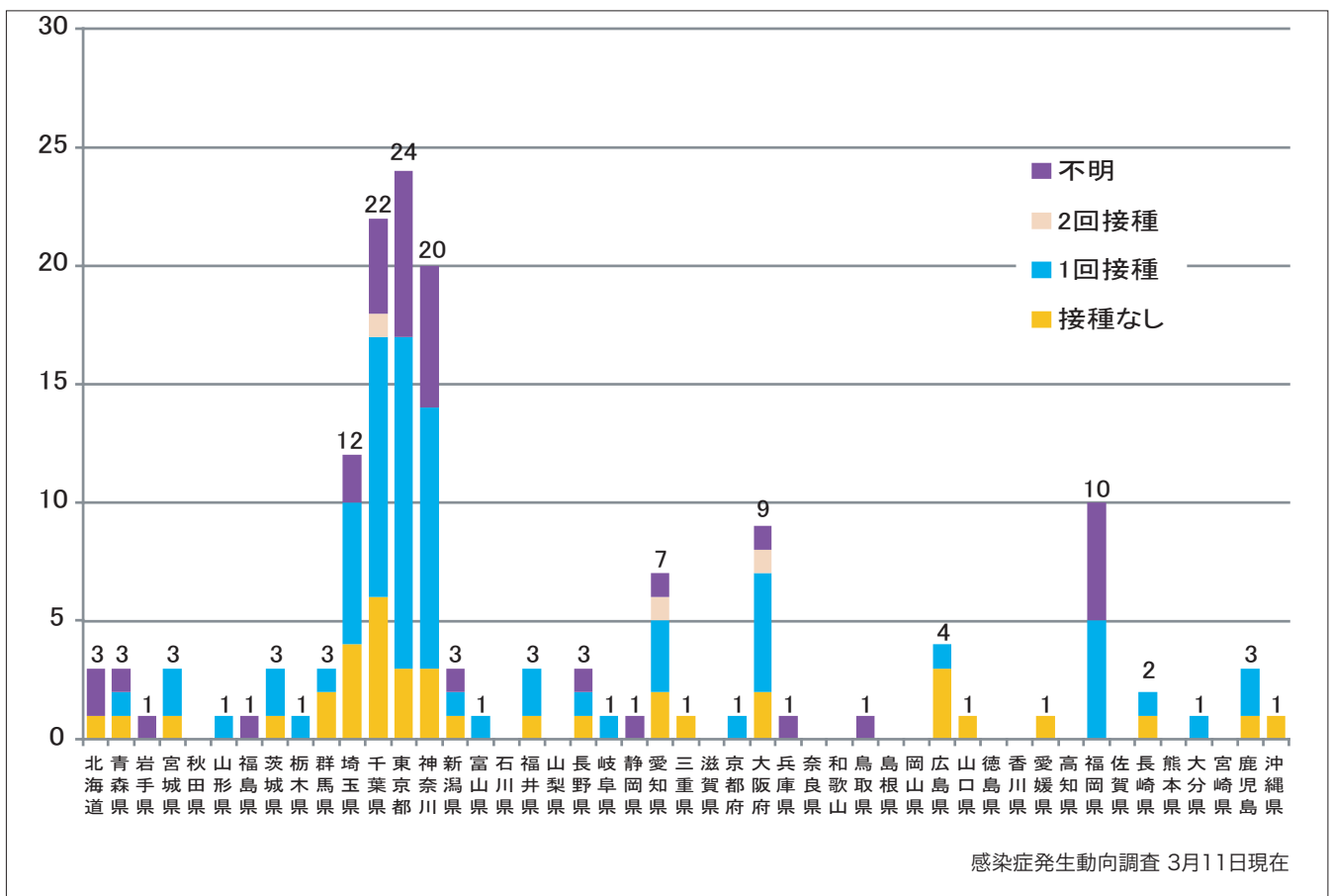
■ Clinically diagnosed ■ Laboratory diagnosed ■ Modified measles, laboratory diagnosed



4. 都道府県別接種歴別麻疹累積報告数 2009年第1週-10週 (n=152)

Cumulative measles cases by prefecture and vaccinated status from week 1 to week 10, 2009 (as of March 11).

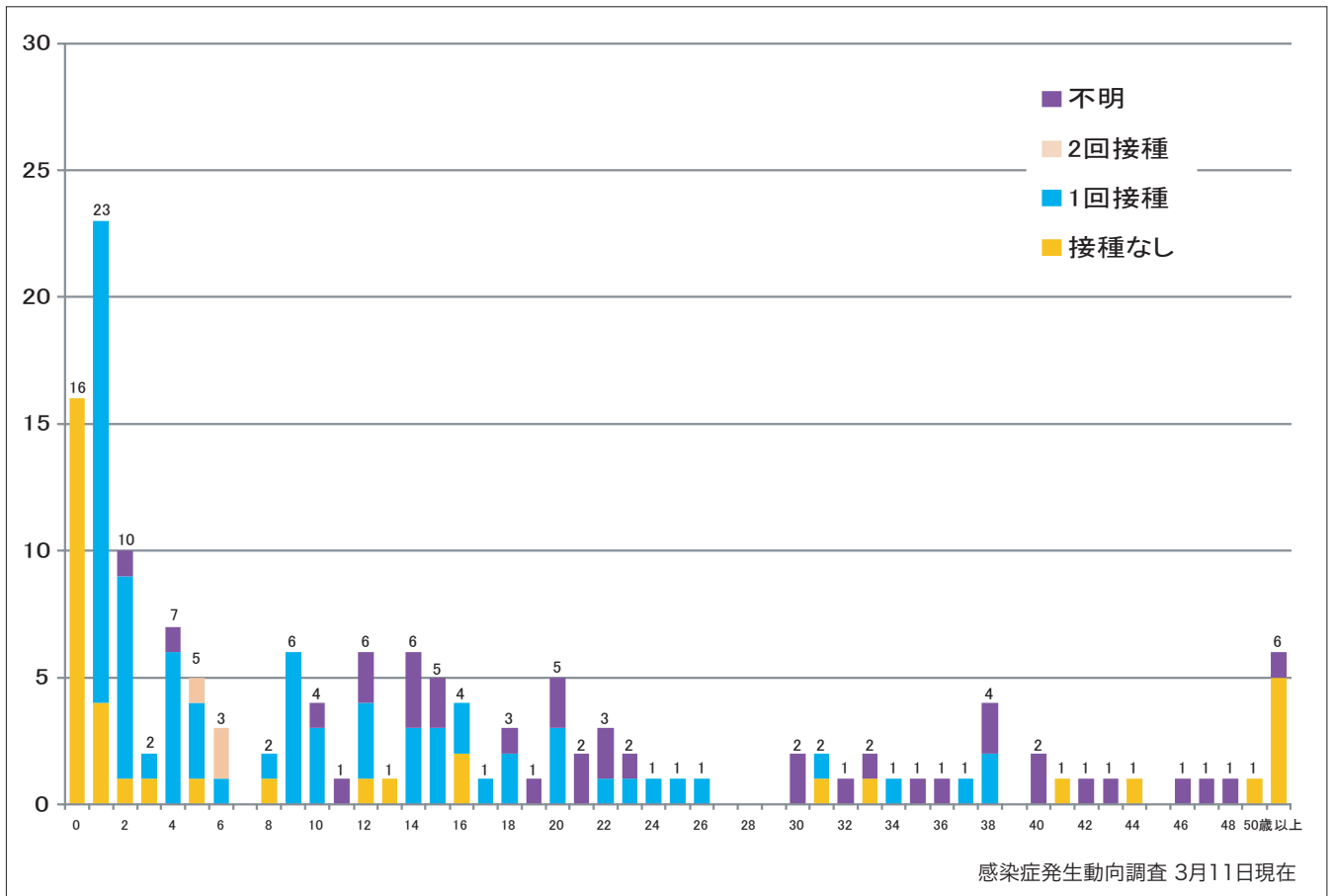
■ None ■ MCV1 ■ MCV2 ■ Unknown



5. 年齢群別接種歴別麻疹累積報告数 2009年第1週-10週 (n=152)

Cumulative measles cases by age and vaccinated status from week 1 to week 10, 2009 (as of March 11).

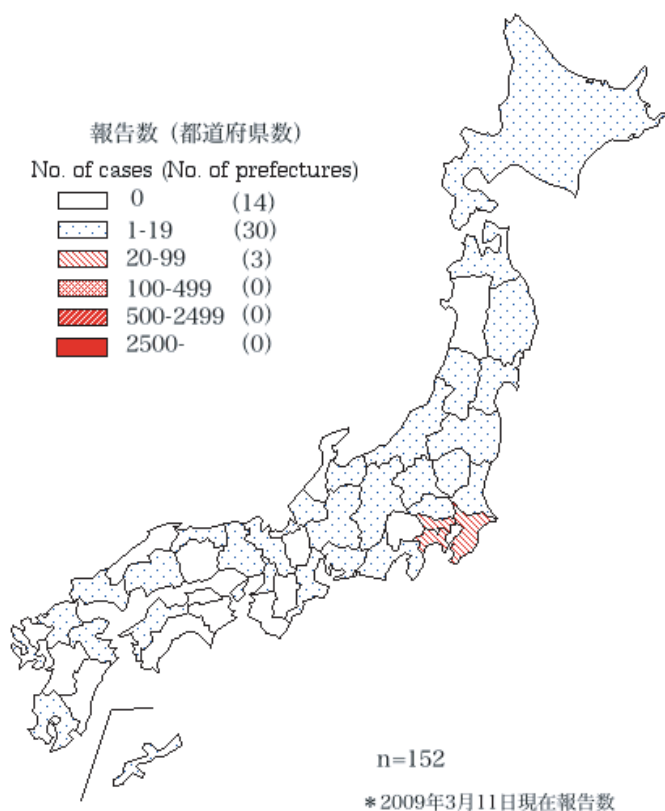
None MCV1 MCV2 Unknown



6. 都道府県別麻疹累積報告状況、2009年第1週－10週

感染症発生動向調査

Cumulative measles cases by prefecture from week 1 to week 10, 2009 (as of March 11)



7. 都道府県別麻疹週別報告状況2009年 2009年第1週－10週 感染症発生動向調査

Weekly measles cases from week 1 to week 10, 2009 (based on diagnosed week as of March 11)

