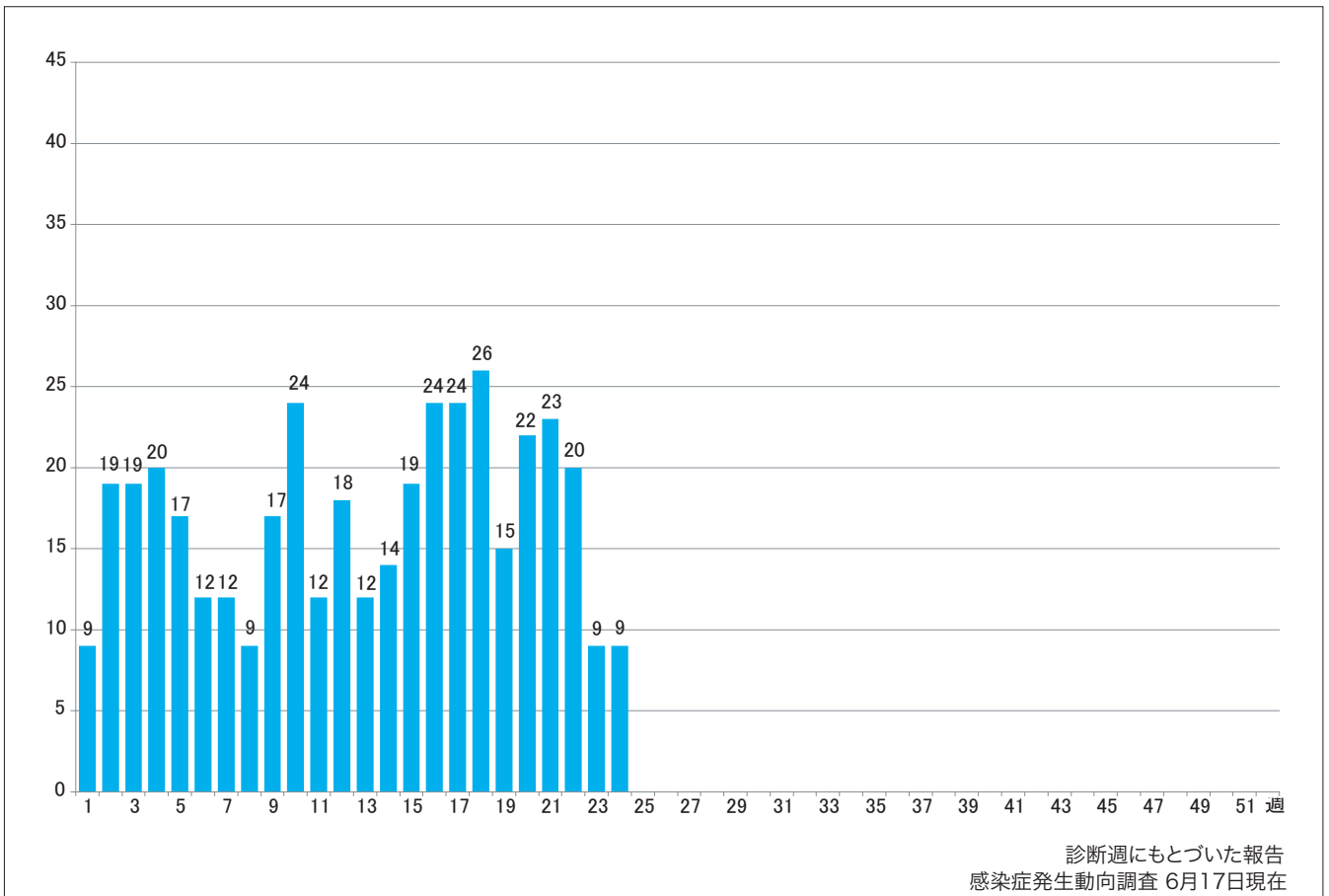


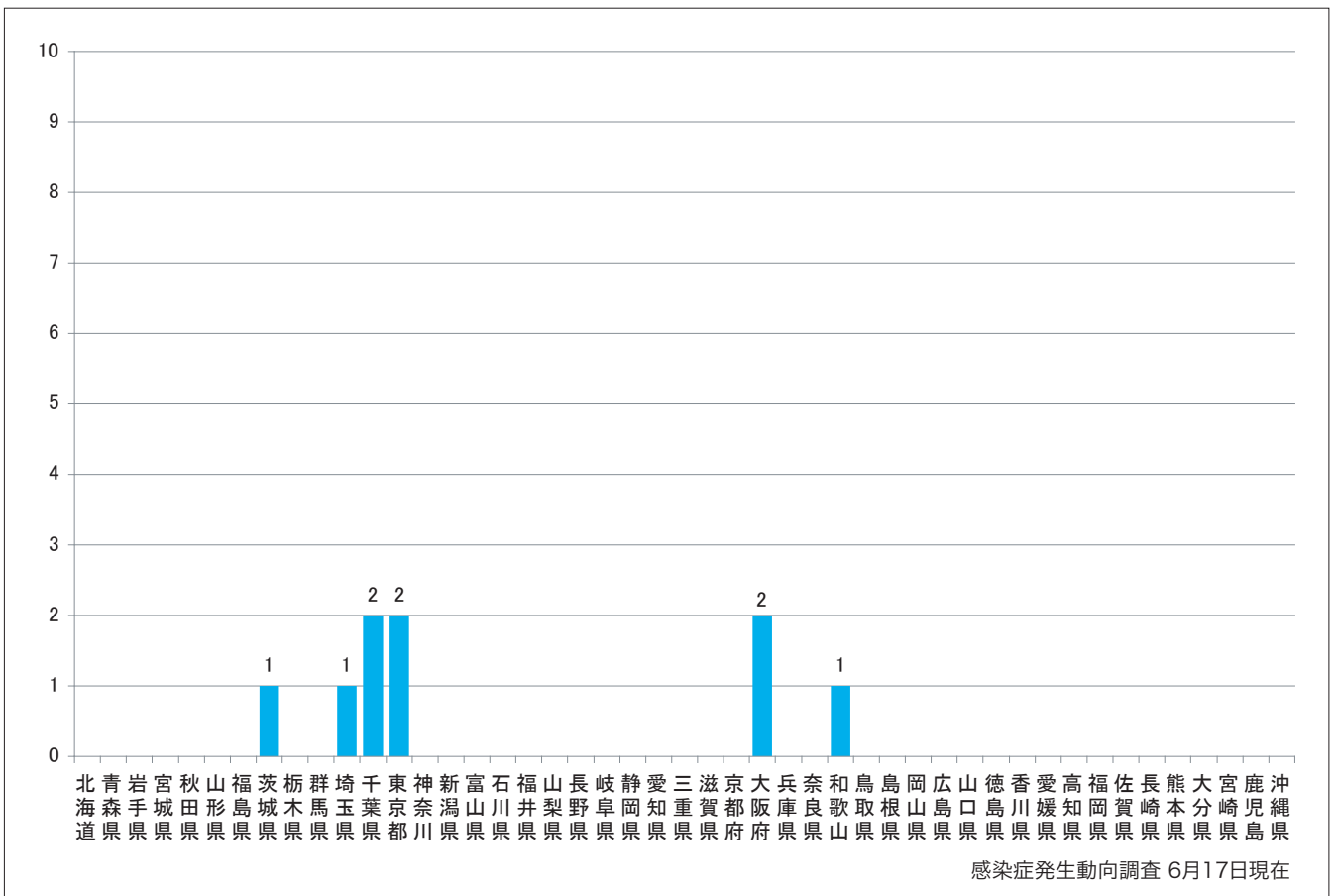
1. 週別麻疹報告数 2009年第1週-24週 (n=405)

Weekly measles cases from week 1 to week 24 in 2009 (based on diagnosed week as of June 17).



2. 都道府県別麻疹報告数2009年第24週 (n=9)

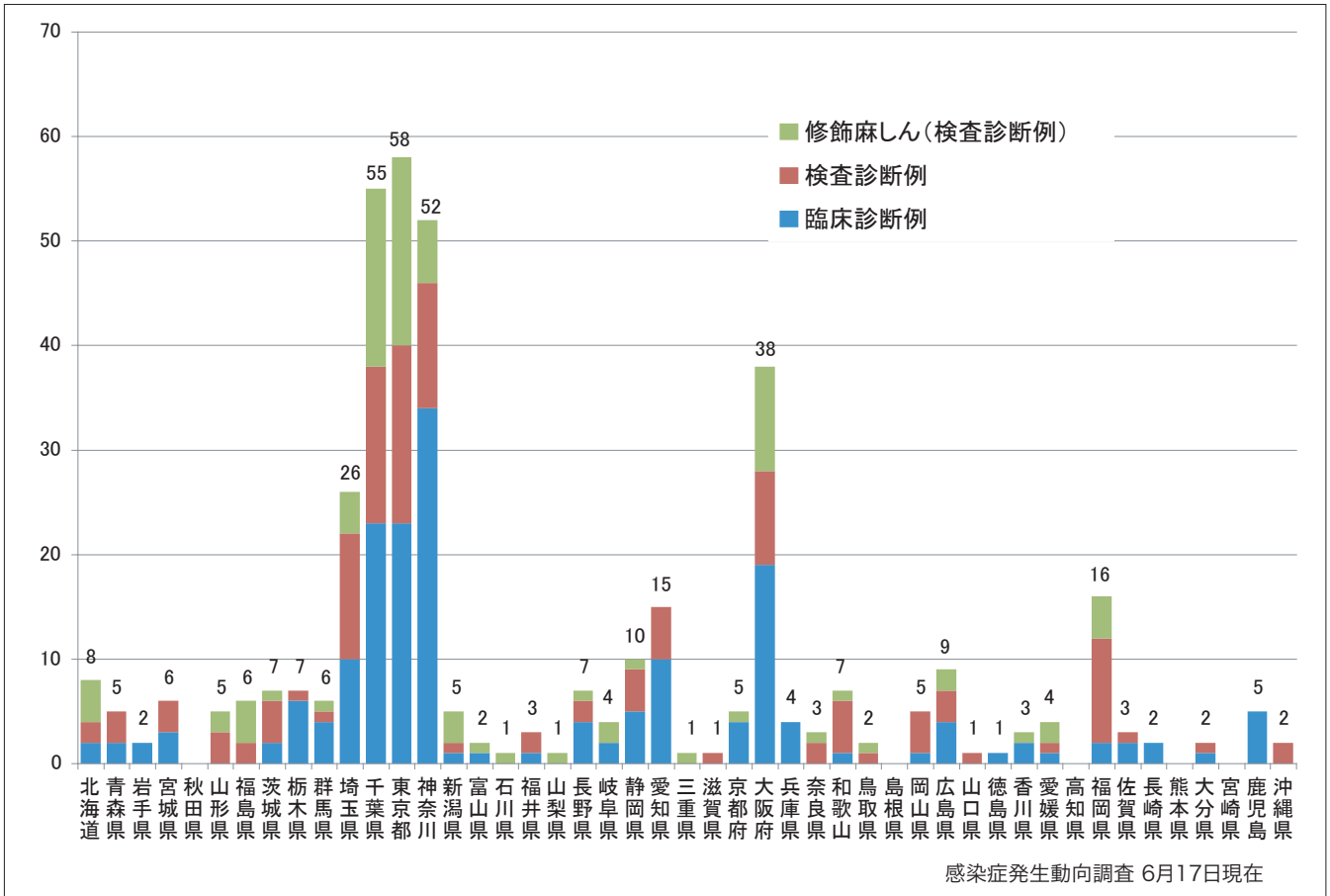
Reported measles cases by prefecture in week 24, 2009 (as of June 17).



3. 都道府県別病型別麻疹累積報告数 2009年第1週-24週 (n=405)

Cumulative measles cases by prefecture and methods of diagnosis from week 1 to week 24, 2009 (as of June 17).

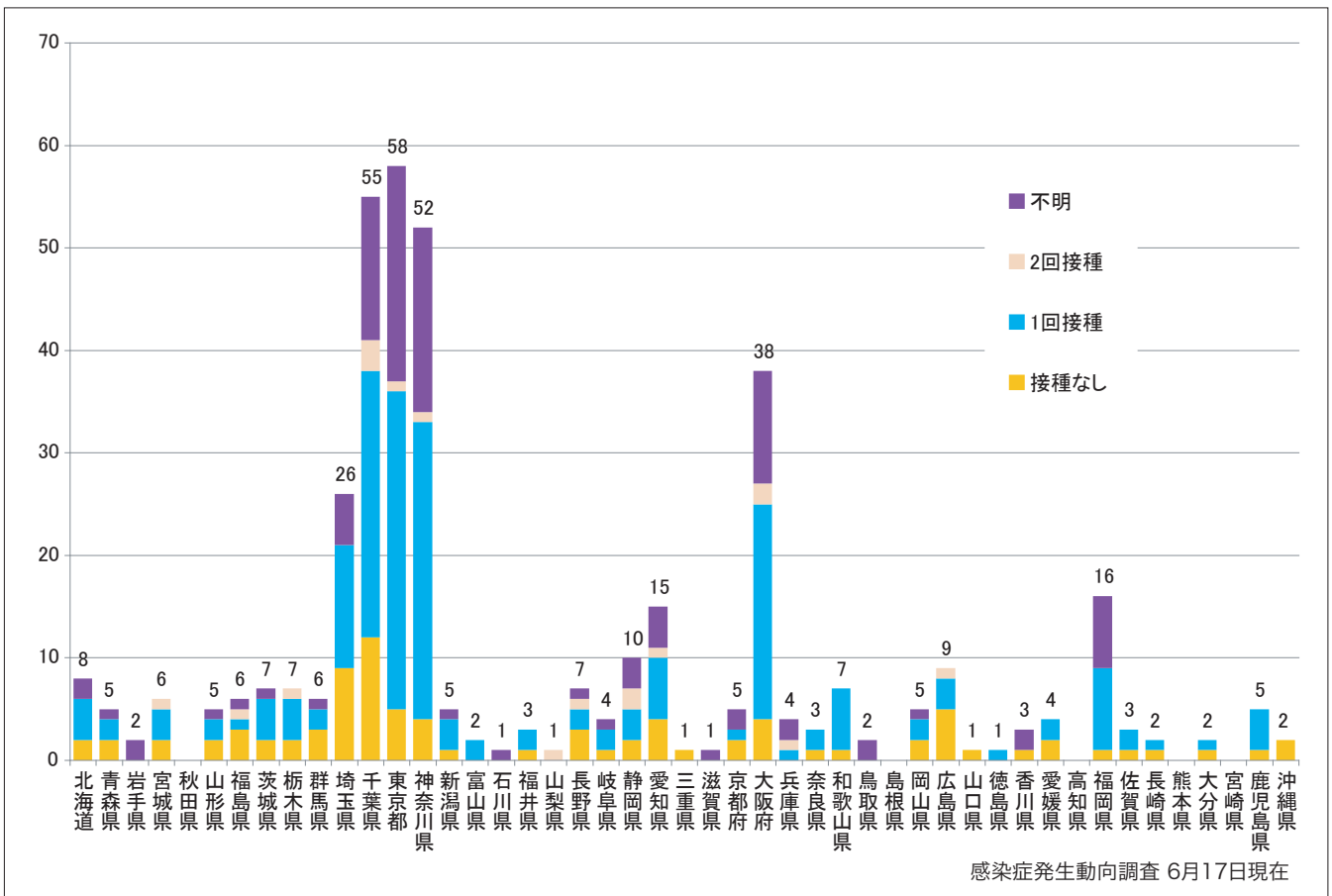
■ Clinically diagnosed ■ Laboratory diagnosed ■ Modified measles, laboratory diagnosed



4. 都道府県別接種歴別麻疹累積報告数 2009年第1週-24週 (n=405)

Cumulative measles cases by prefecture and vaccinated status from week 1 to week 24, 2009 (as of June 17).

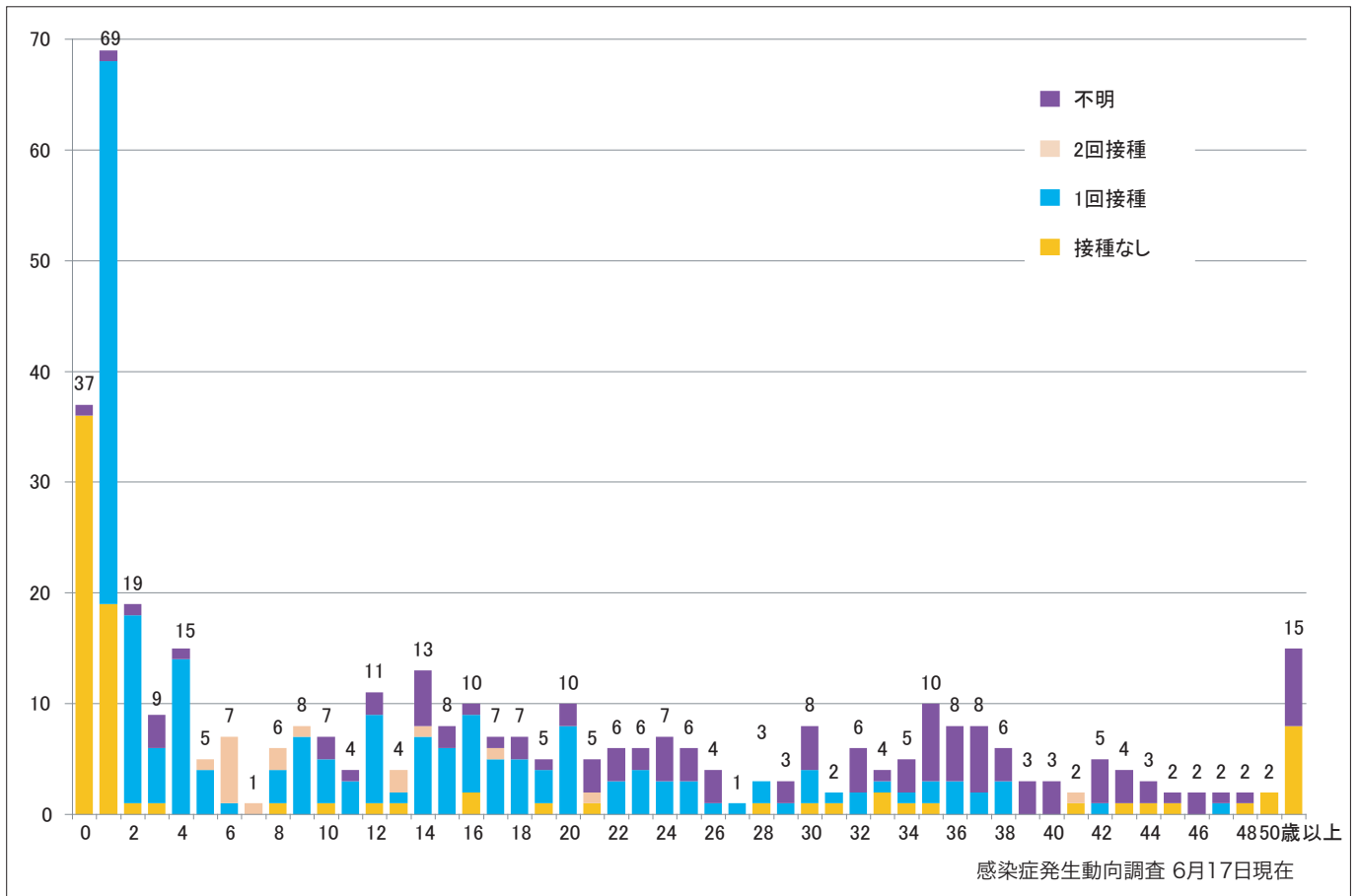
■ None ■ MCV1 ■ MCV2 ■ Unknown



5. 年齢群別接種歴別麻疹累積報告数 2009年第1週-24週 (n=405)

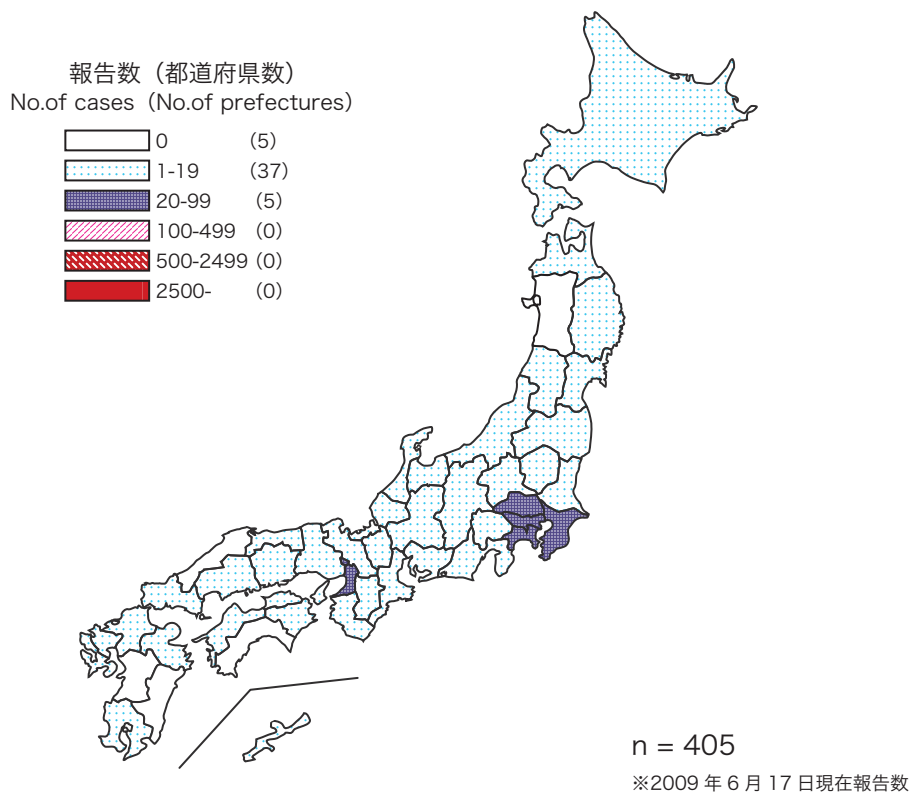
Cumulative measles cases by age and vaccinated status from week 1 to week 24, 2009 (as of June 17).

None MCV1 MCV2 Unknown



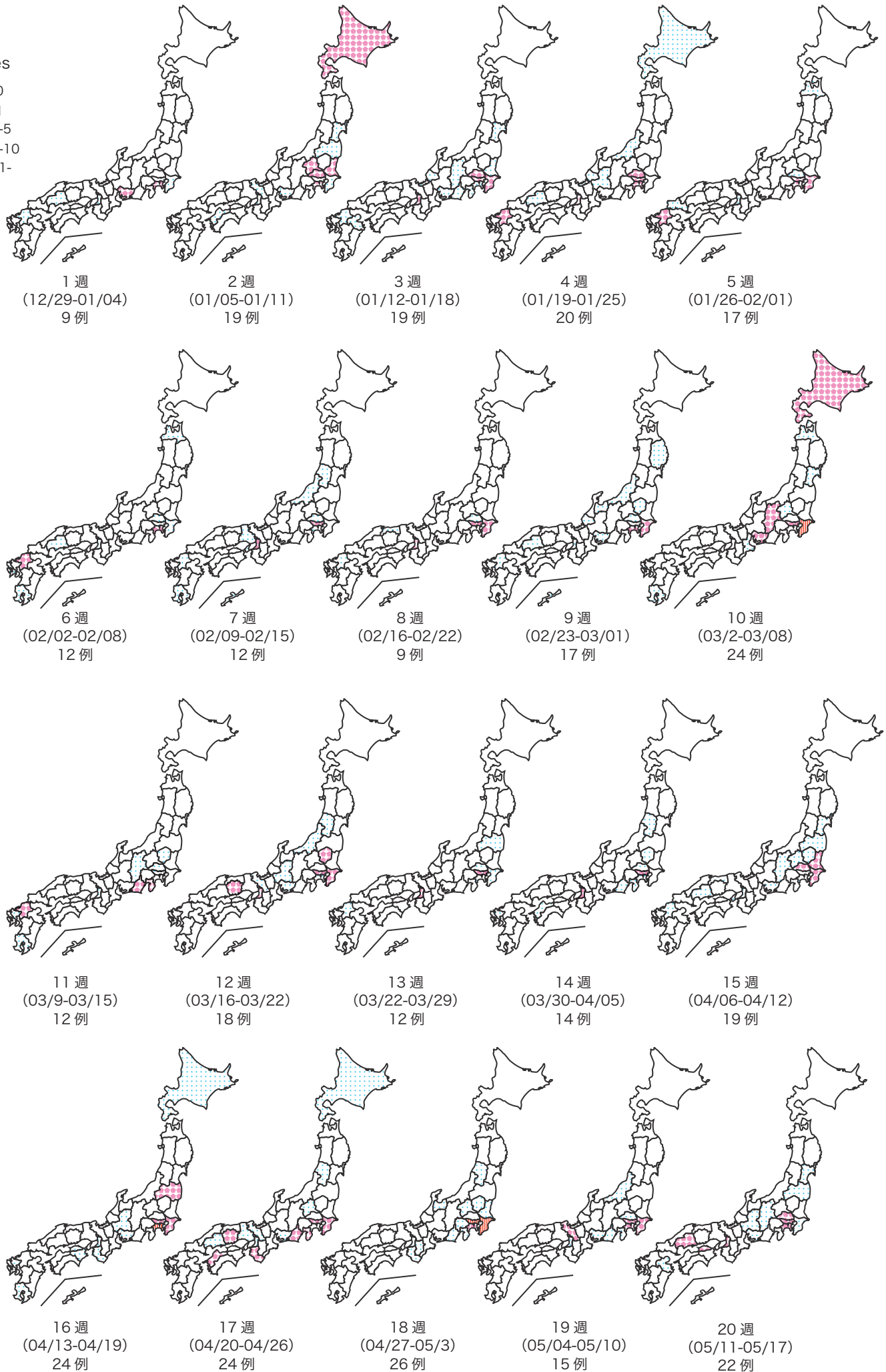
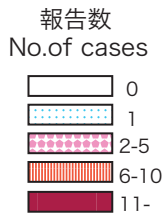
6. 都道府県別麻疹累積報告状況、2009 年第 1 週-24 週 感染症発生動向調査

Cumulative measles cases by prefecture from week 1 to week 24, 2009 (as of June 17)



7. 都道府県別麻疹週別報告状況 2009年 2009年第1週-24週 感染症発生動向調査

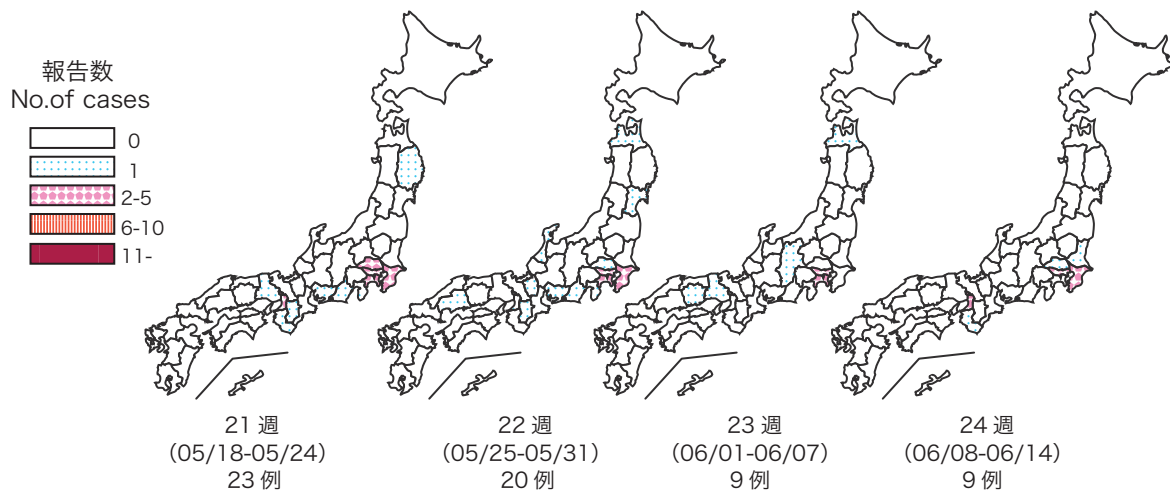
Weekly measles cases from week 1 to week 24, 2009 (based on diagnosed week as of June 17)



※2009年6月17日現在報告数

7. 都道府県別麻疹週別報告状況 2009年 2009年第1週-24週 感染症発生動向調査

Weekly measles cases from week 1 to week 24, 2009 (based on diagnosed week as of June 17)



※2009年6月17日現在報告数