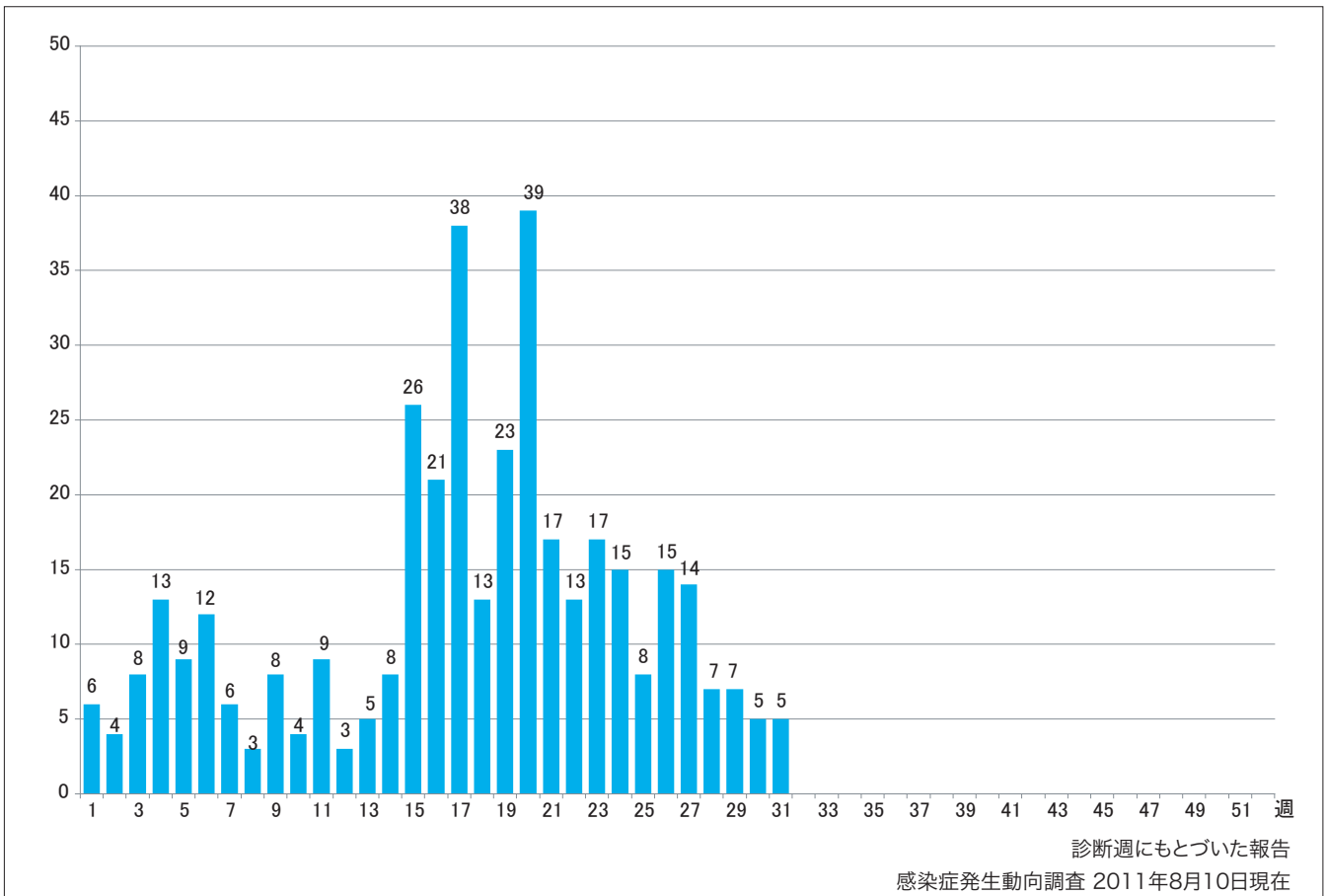


1. 週別麻疹報告数 2011年 第1~31週 (n=381)

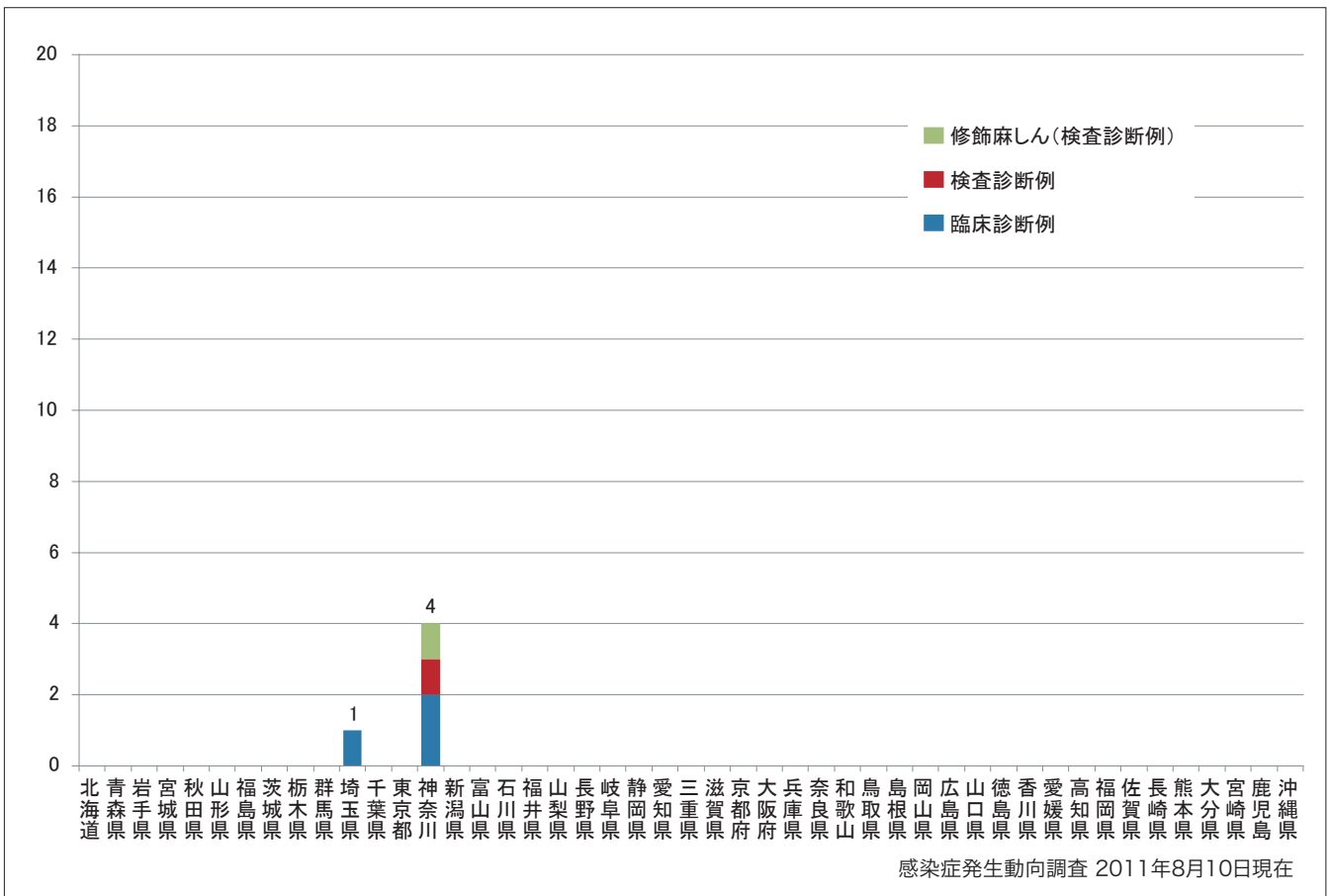
Weekly measles cases from week 1 to week 31 in 2011 (based on diagnosed week as of August 10, 2011).



2. 都道府県別病型別麻疹報告数2011年 第31週 (n=5)

Reported measles cases by prefecture and methods of diagnosis in week 31, 2011 (as of August 10, 2011).

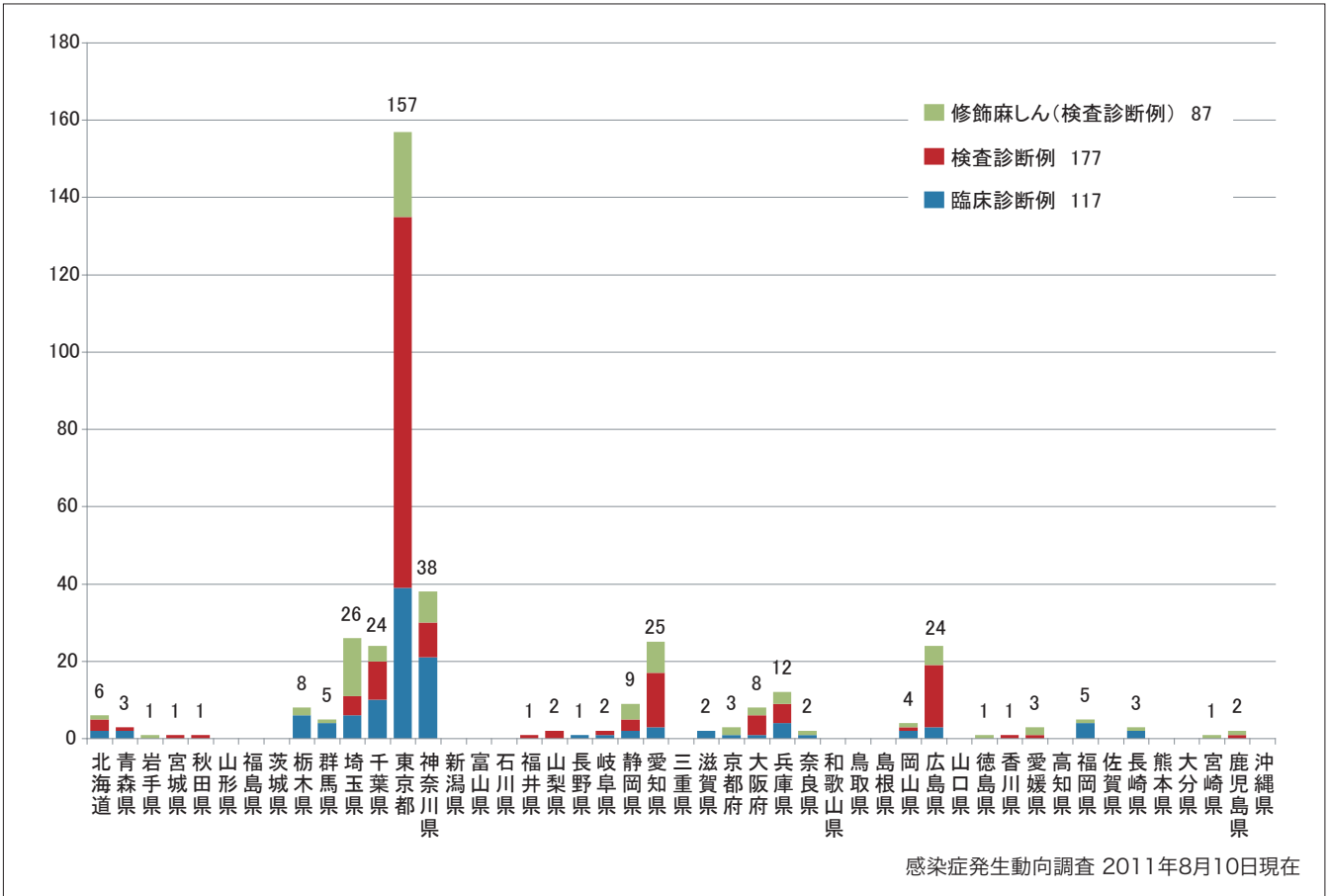
■ Clinically diagnosed ■ Laboratory diagnosed ■ Modified measles, laboratory diagnosed



3. 都道府県別病型別麻疹累積報告数 2011年 第1~31週 (n=381)

Cumulative measles cases by prefecture and methods of diagnosis from week 1 to week 31, 2011 (as of August 10, 2011).

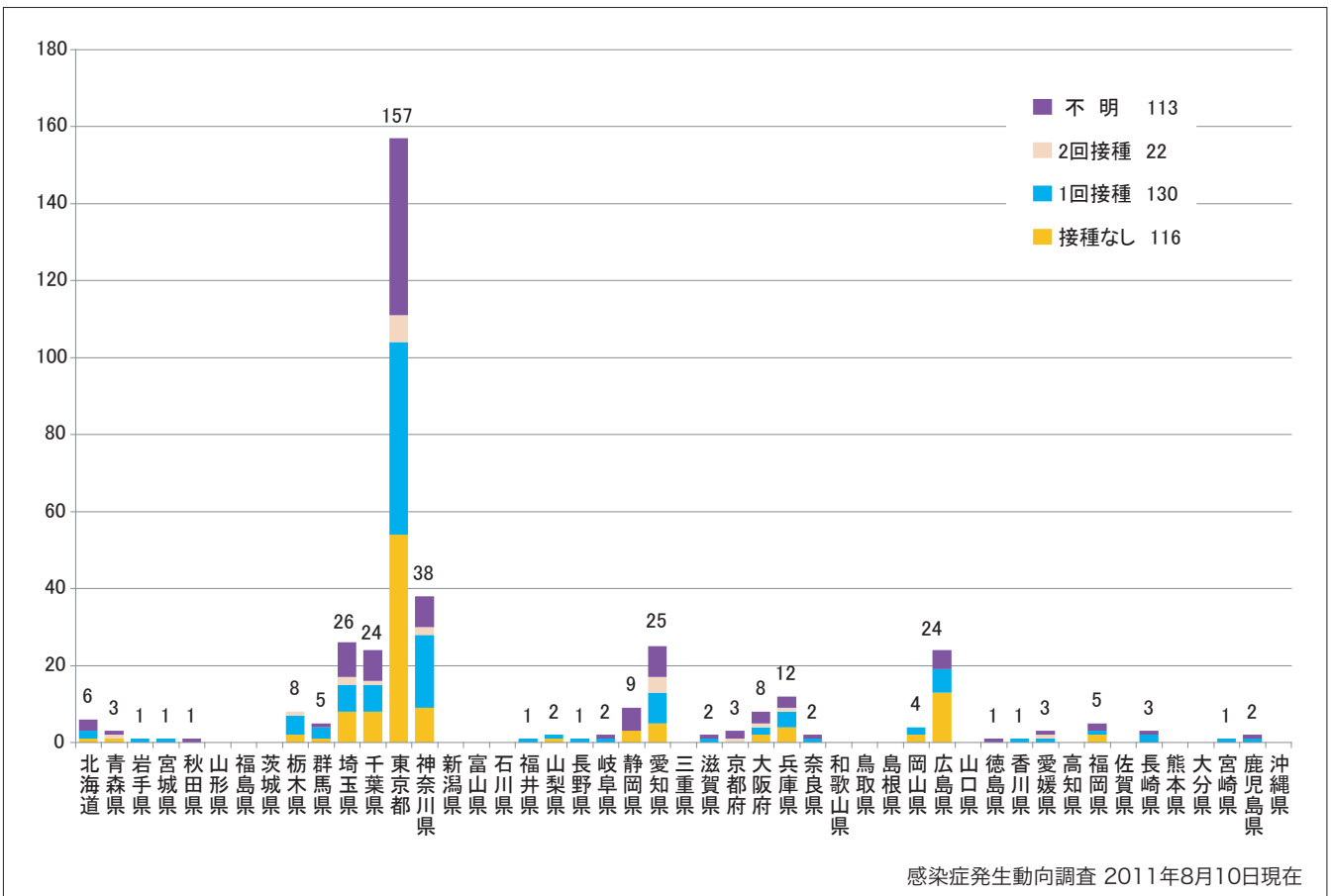
■ Clinically diagnosed ■ Laboratory diagnosed ■ Modified measles, laboratory diagnosed



4. 都道府県別接種歴別麻疹累積報告数 2011年 第1~31週 (n=381)

Cumulative measles cases by prefecture and vaccinated status from week 1 to week 31, 2011 (as of August 10, 2011).

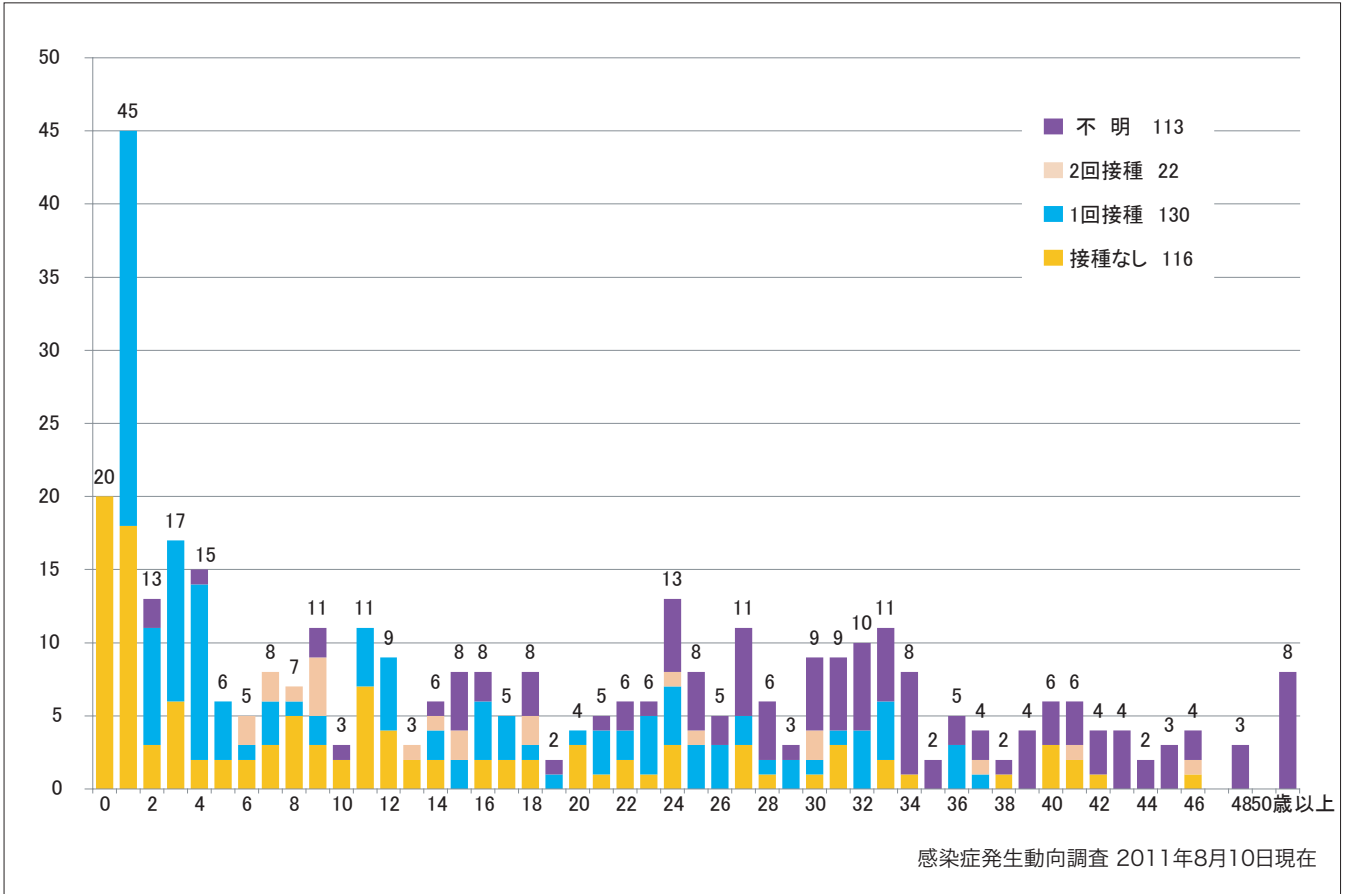
■ None ■ MCV1 ■ MCV2 ■ Unknown



5. 年齢群別接種歴別麻疹累積報告数 2011年 第1~31週 (n=381)

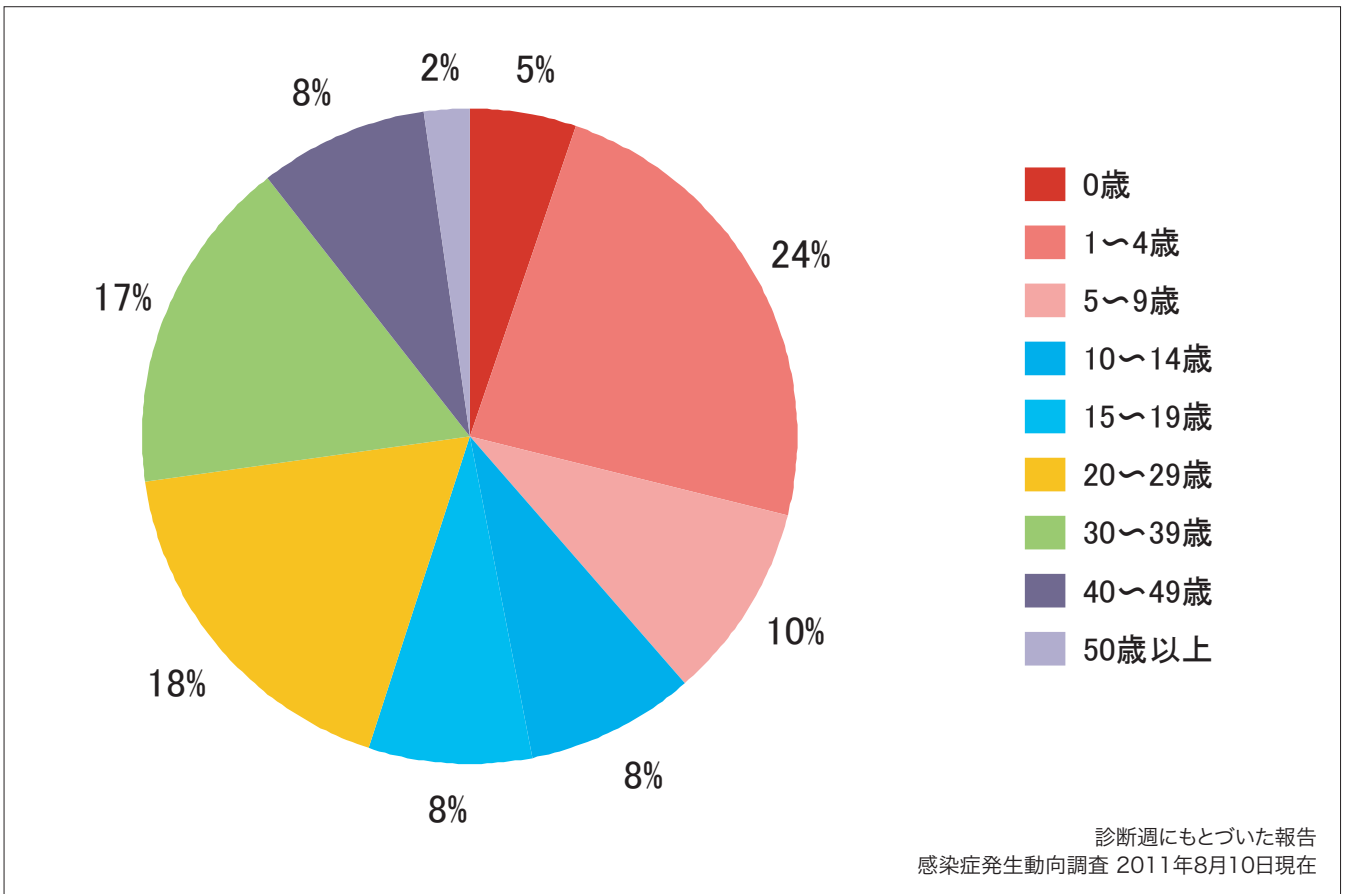
Cumulative measles cases by age and vaccinated status from week 1 to week 31, 2011 (as of August 10, 2011).

None MCV1 MCV2 Unknown



6. 年齢群別麻疹累積報告数割合 2011年 第1~31週 (n=381)

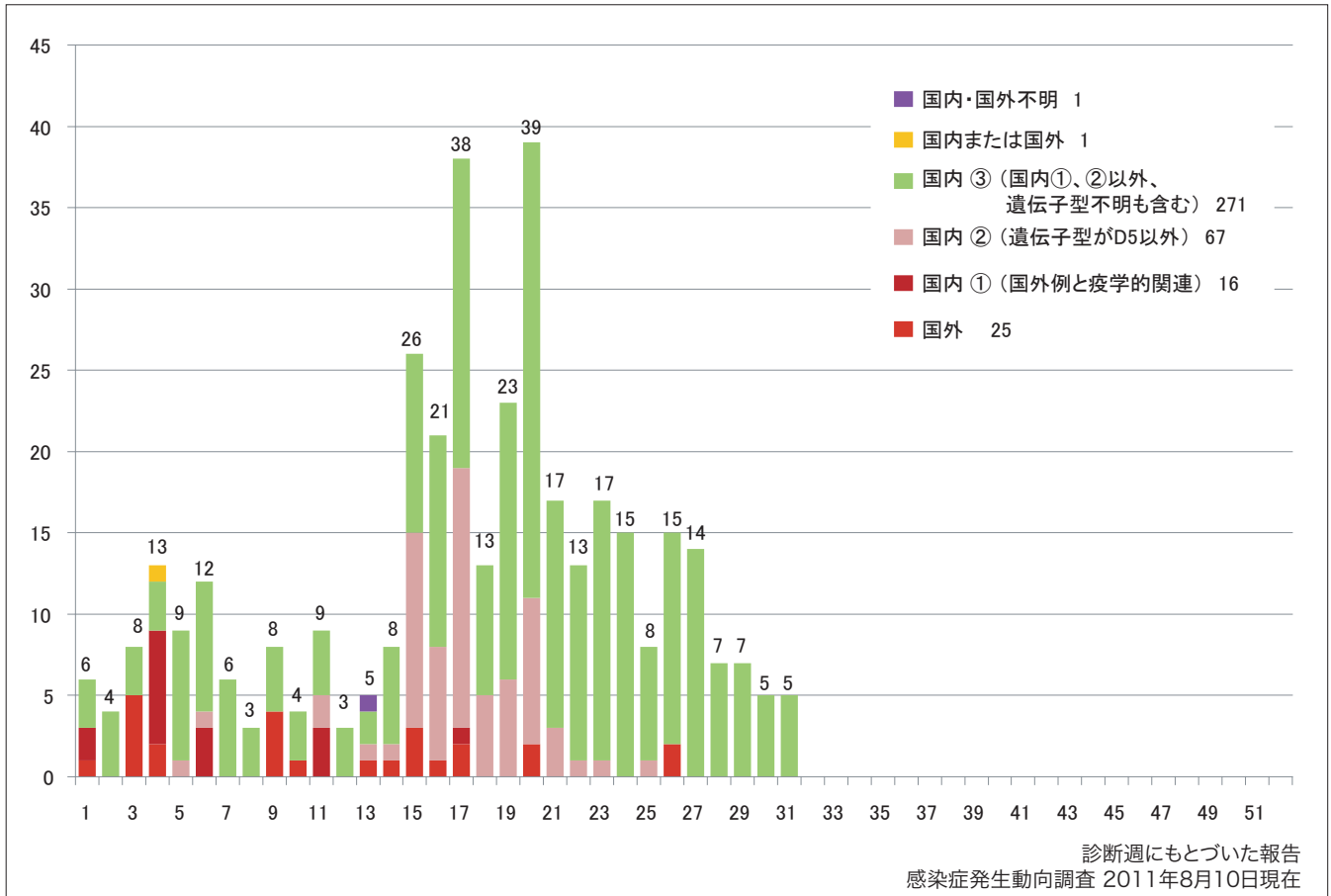
Percentage of cumulative measles cases by age group from week 1 to week 31, 2011 (as of August 10, 2011).



7. 週別推定感染地域（国内・外）別麻疹報告数 2011年 第1～31週（n=381）

Weekly measles cases by acquired region from week 1 to week 31 in 2011
(based on diagnosed week as of August 10, 2011).

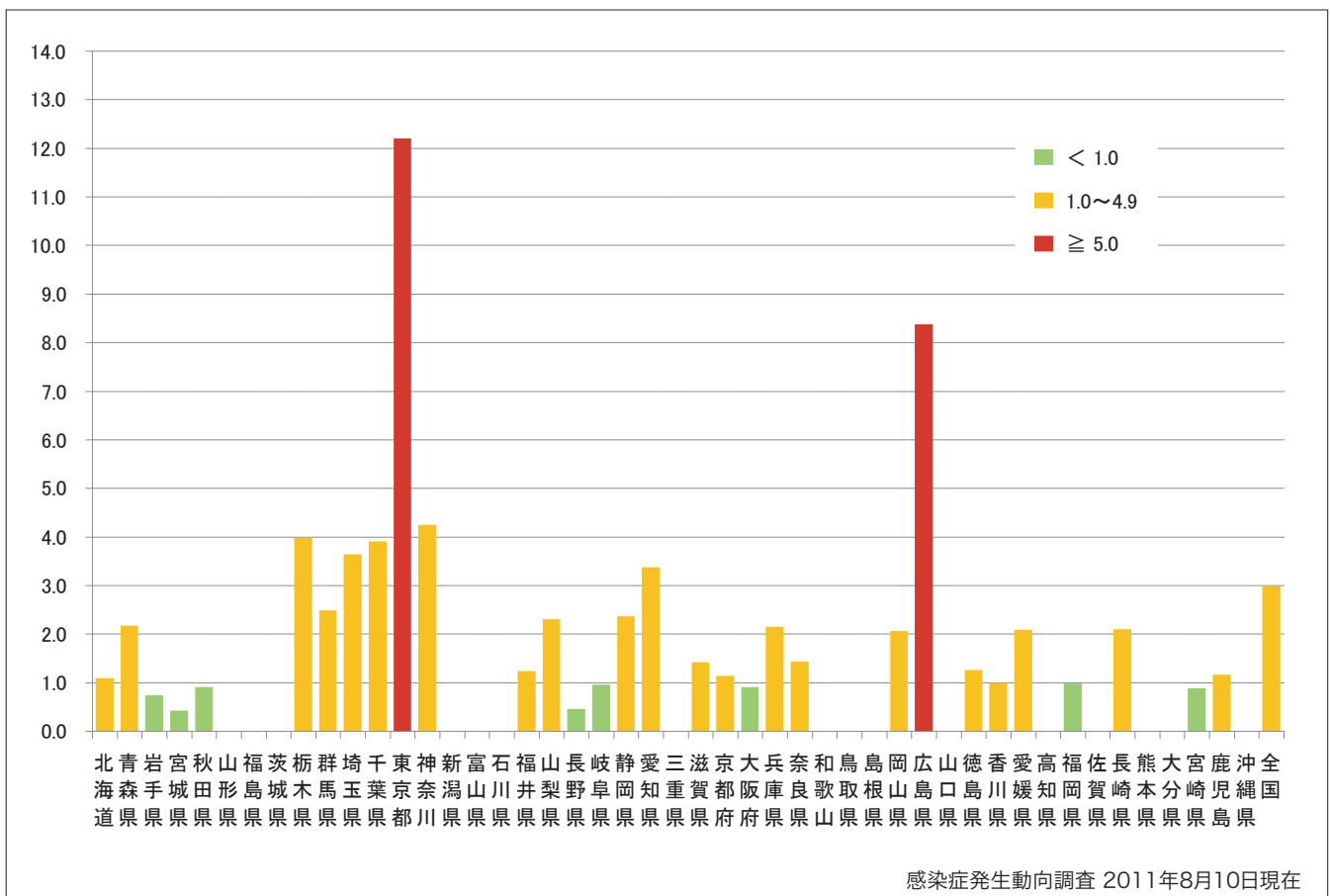
■ Imported cases ■ Domestic cases① (import-linked cases) ■ Domestic cases② (Except for genotype D5) ■ Domestic cases③ (other than①and②) ■ Unspecified ■ Unknown



8. 都道府県別人口百万人あたり麻疹報告数 2011年 第1～31週（n=381）

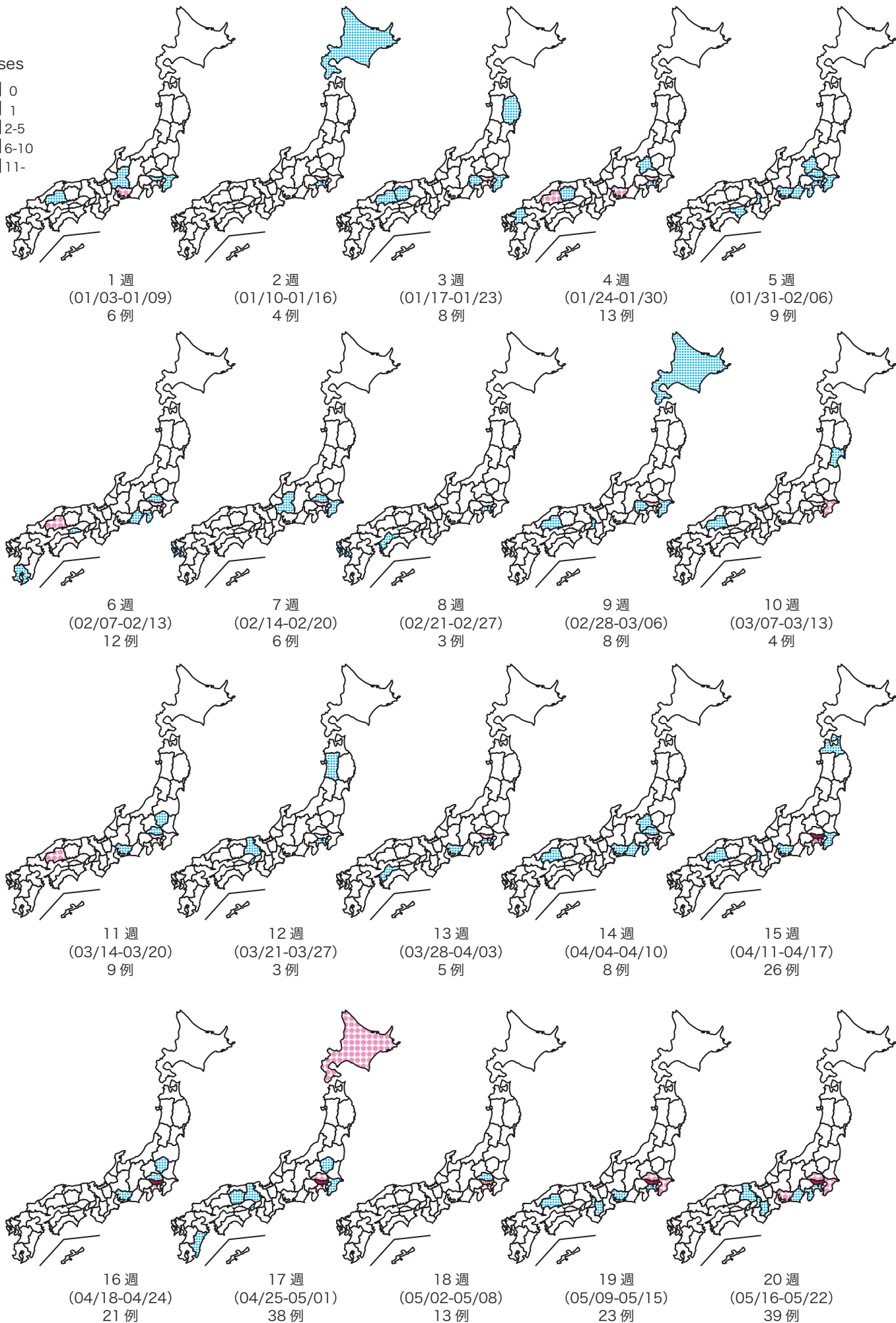
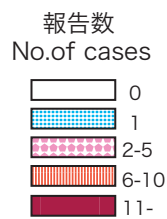
Number of reported cases per 1 million population by prefectures from week 1 to week 31, 2011
(as of August 10, 2011).

■ <1.0 ■ 1.0～4.9 ■ ≥5.0



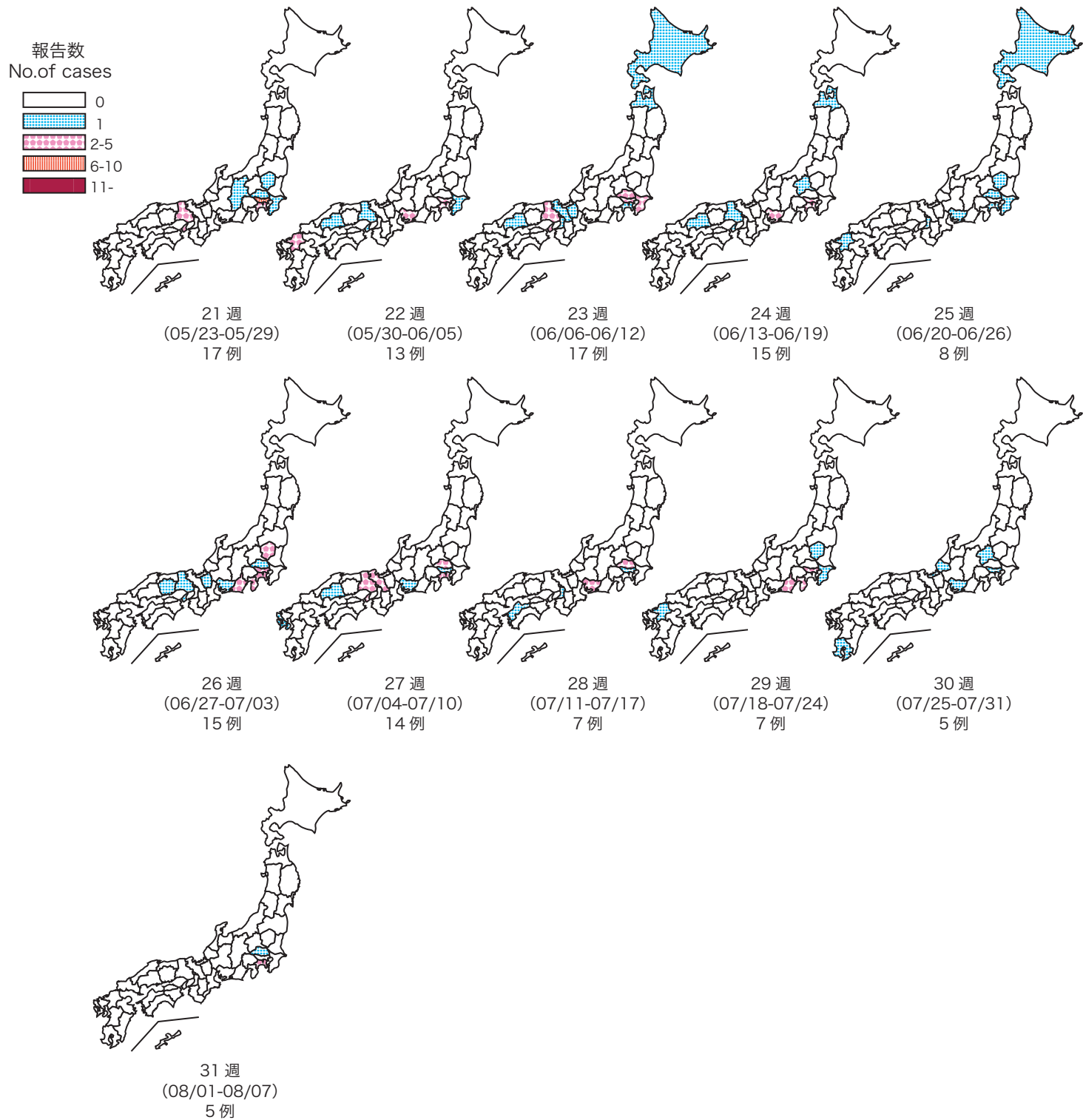
9. 都道府県別麻疹週別報告状況 2011年 第1~31週 感染症発生動向調査

Weekly measles cases from week 1 to week 31, 2011 (based on diagnosed week as of August 10, 2011)



9. 都道府県別麻疹週別報告状況 2011年 第1~31週 感染症発生動向調査

Weekly measles cases from week 1 to week 31, 2011 (based on diagnosed week as of August 10, 2011)



感染症発生動向調査 2011年8月10日現在