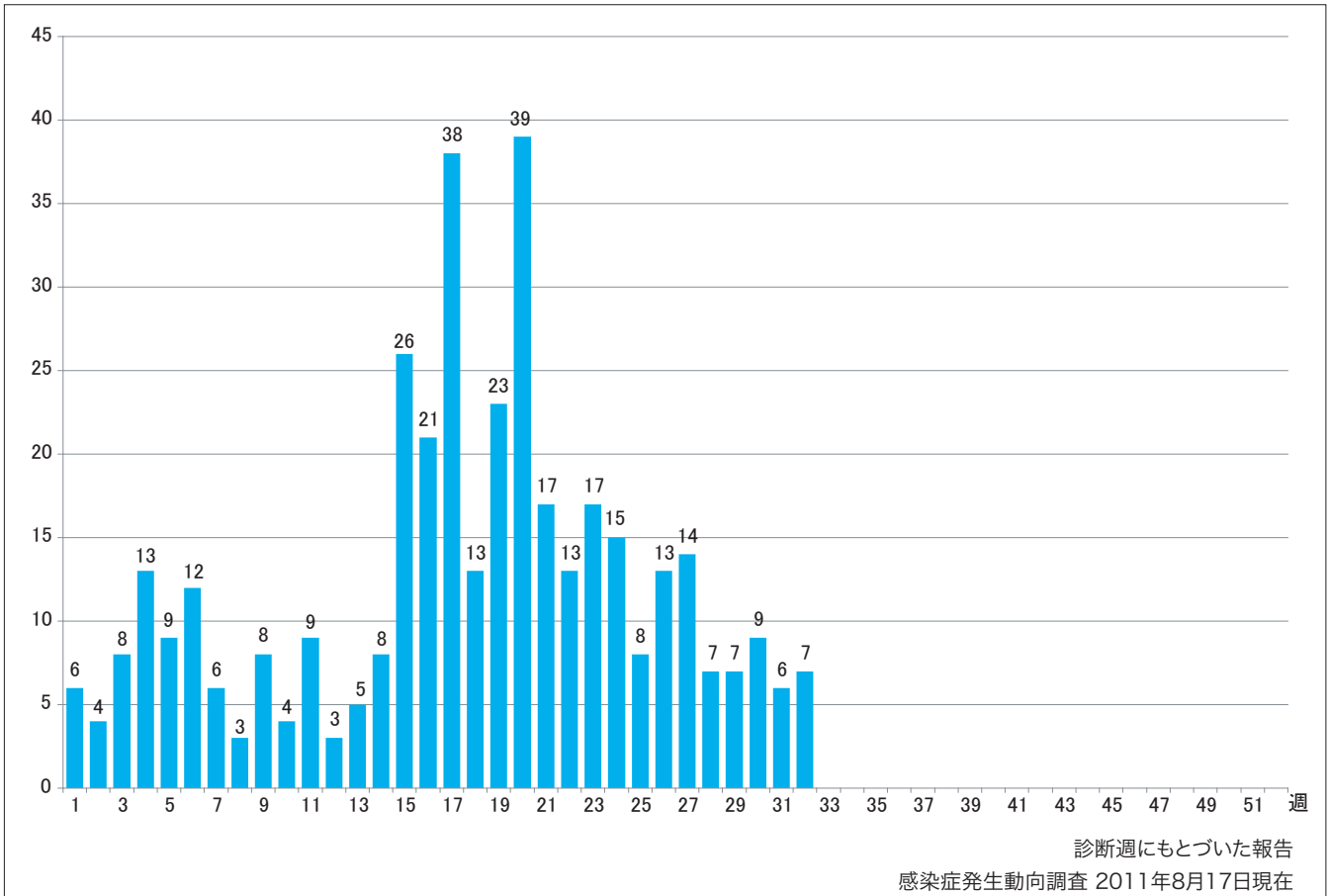


1. 週別麻疹報告数 2011年 第1~32週 (n=391)

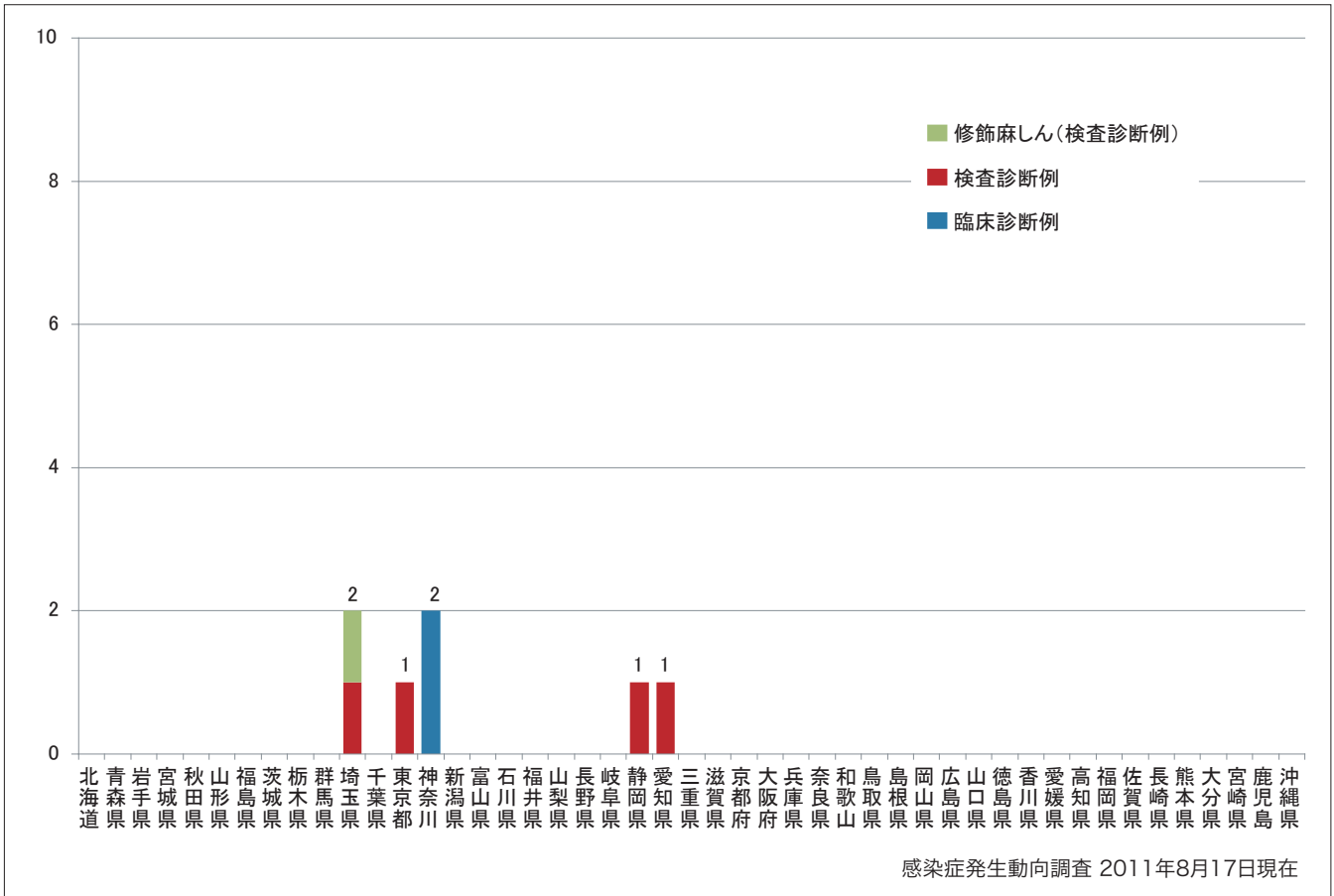
Weekly measles cases from week 1 to week 32 in 2011 (based on diagnosed week as of August 17, 2011).



2. 都道府県別病型別麻疹報告数2011年 第32週 (n=7)

Reported measles cases by prefecture and methods of diagnosis in week 32, 2011 (as of August 17, 2011).

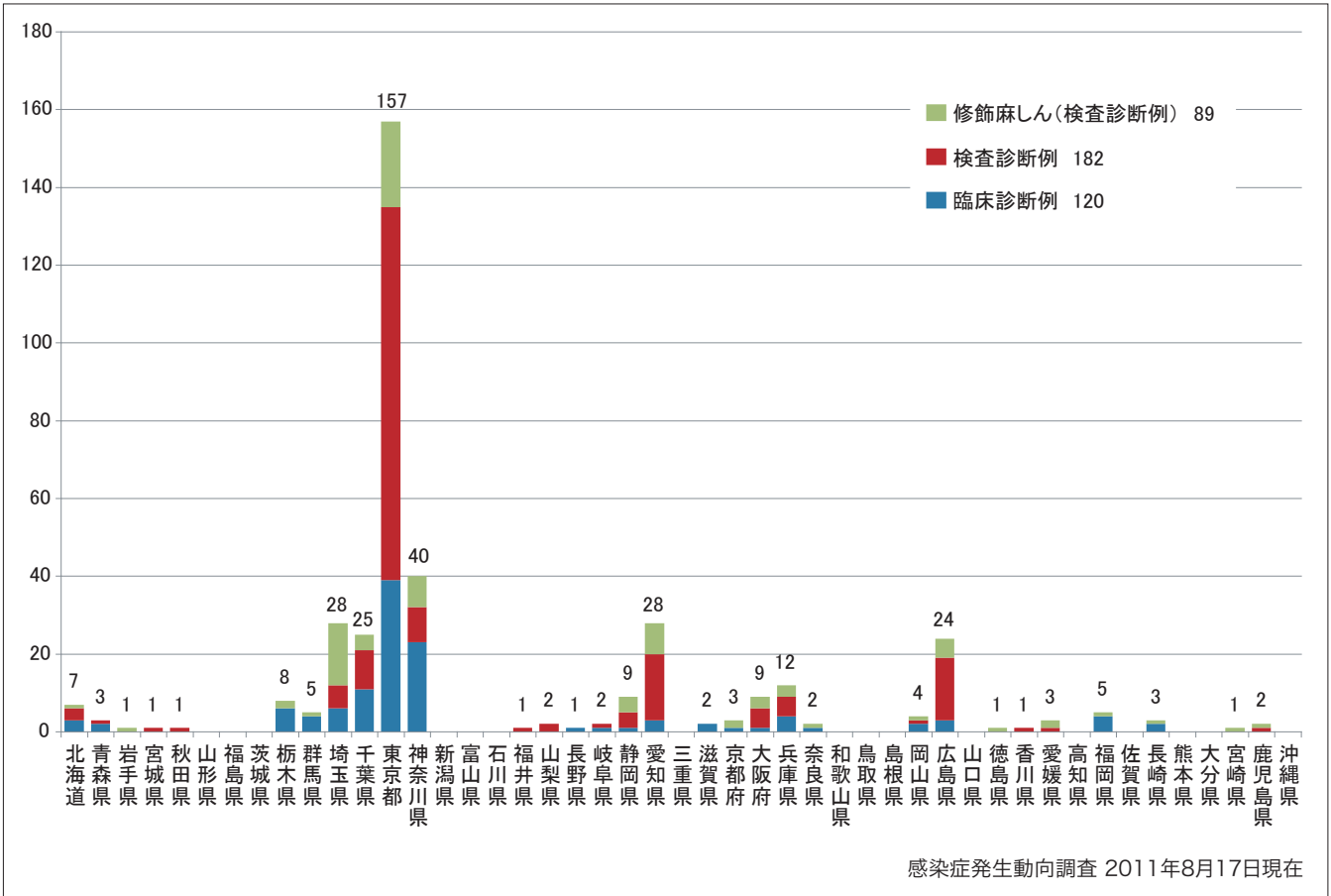
■ Clinically diagnosed ■ Laboratory diagnosed ■ Modified measles, laboratory diagnosed



3. 都道府県別病型別麻疹累積報告数 2011年 第1~32週 (n=391)

Cumulative measles cases by prefecture and methods of diagnosis from week 1 to week 32, 2011 (as of August 17, 2011).

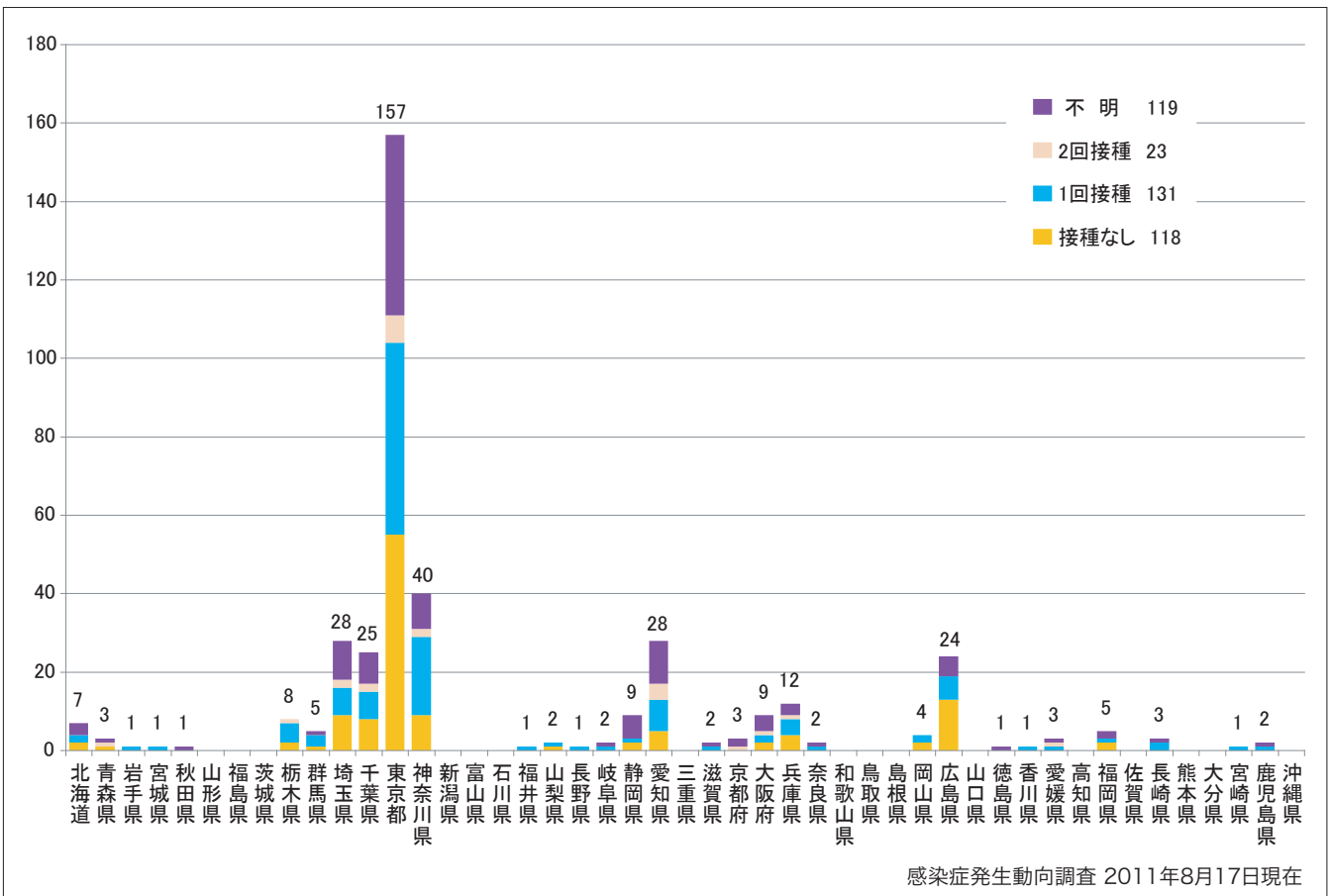
■ Clinically diagnosed ■ Laboratory diagnosed ■ Modified measles, laboratory diagnosed



4. 都道府県別接種歴別麻疹累積報告数 2011年 第1~32週 (n=391)

Cumulative measles cases by prefecture and vaccinated status from week 1 to week 32, 2011 (as of August 17, 2011).

■ None ■ MCV1 ■ MCV2 ■ Unknown

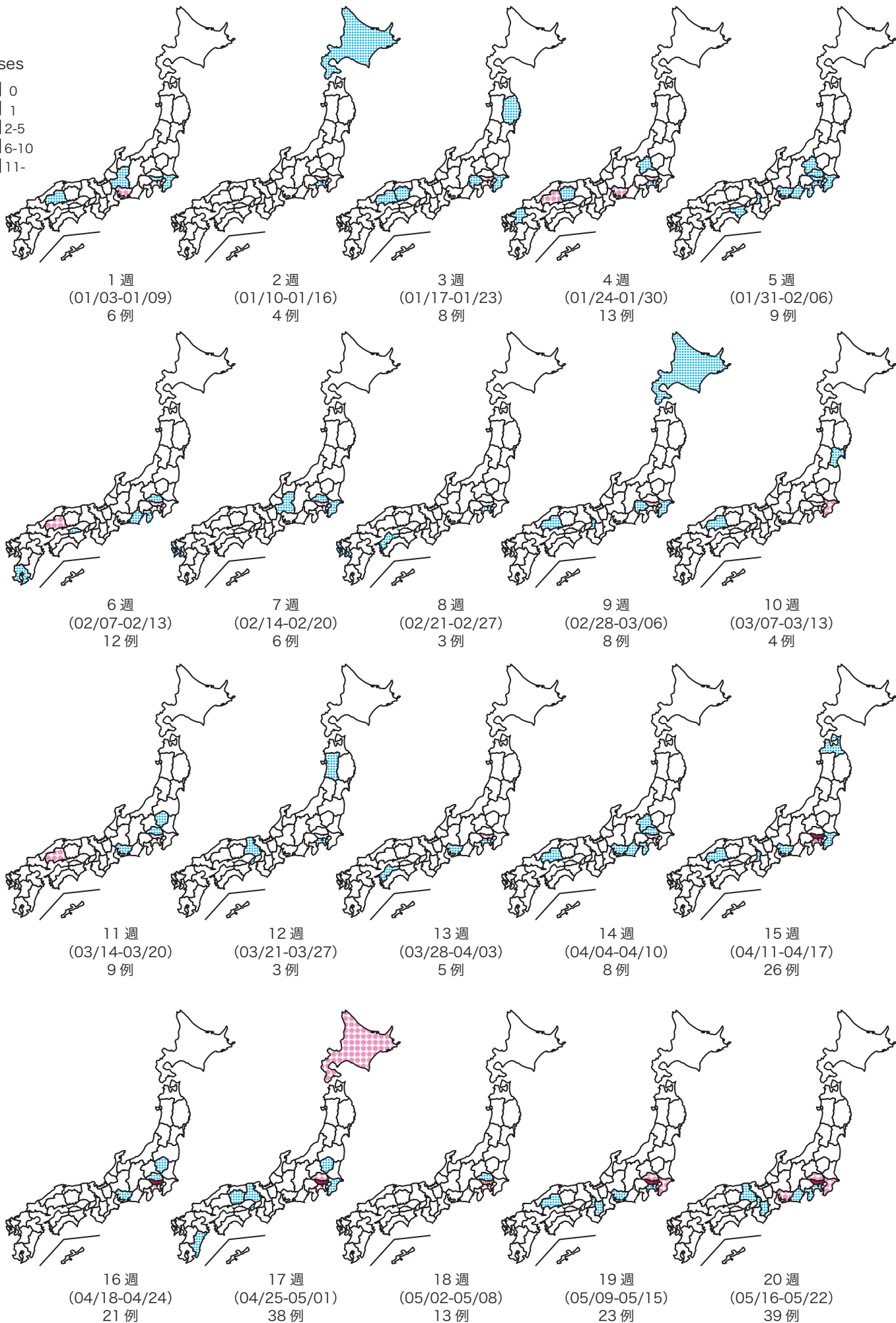
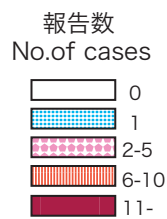






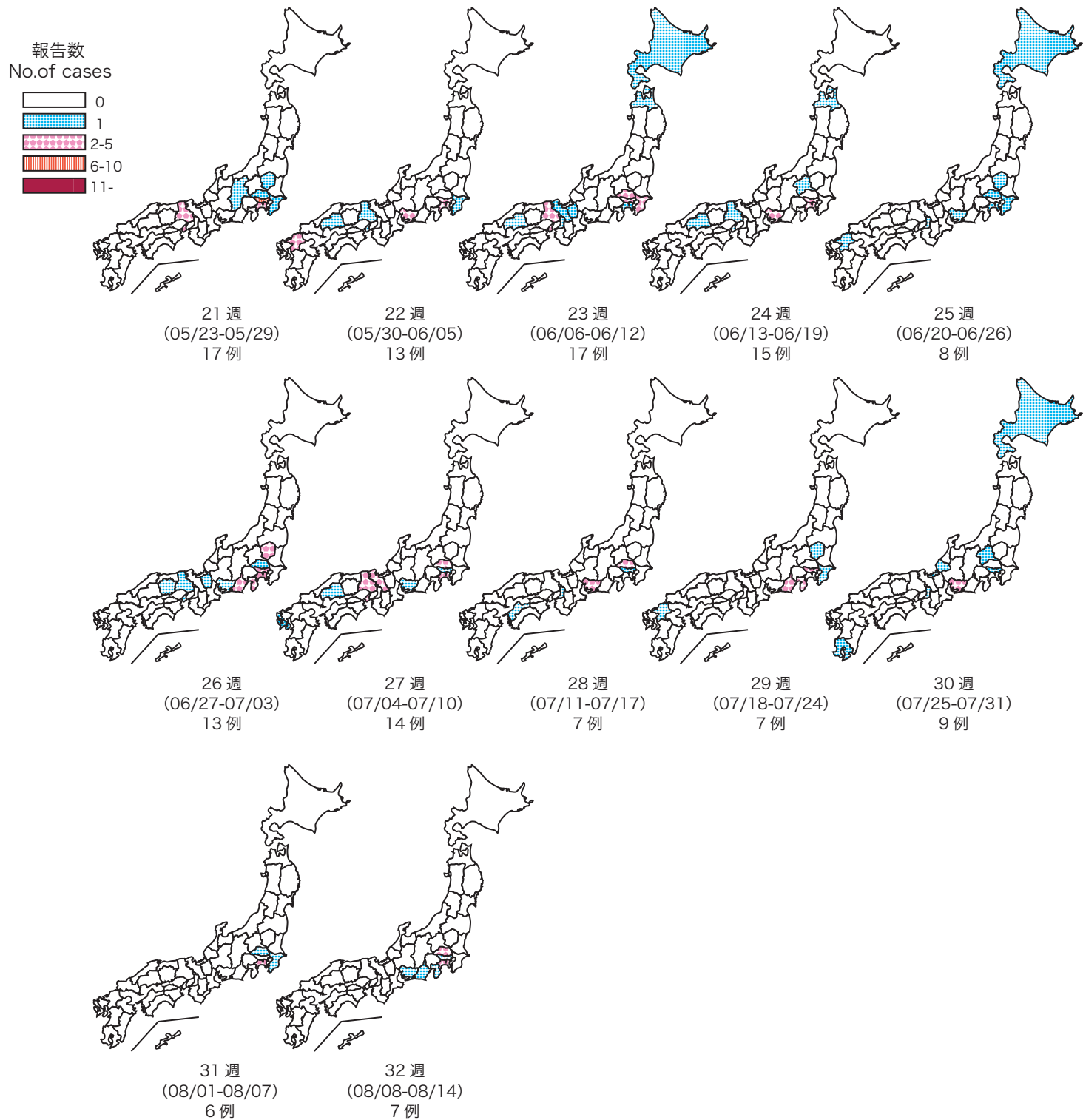
9. 都道府県別麻疹週別報告状況 2011年 第1~32週 感染症発生動向調査

Weekly measles cases from week 1 to week 32, 2011 (based on diagnosed week as of August 17, 2011)



9. 都道府県別麻疹週別報告状況 2011年 第1~32週 感染症発生動向調査

Weekly measles cases from week 1 to week 32, 2011 (based on diagnosed week as of August 17, 2011)



感染症発生動向調査 2011年8月17日現在