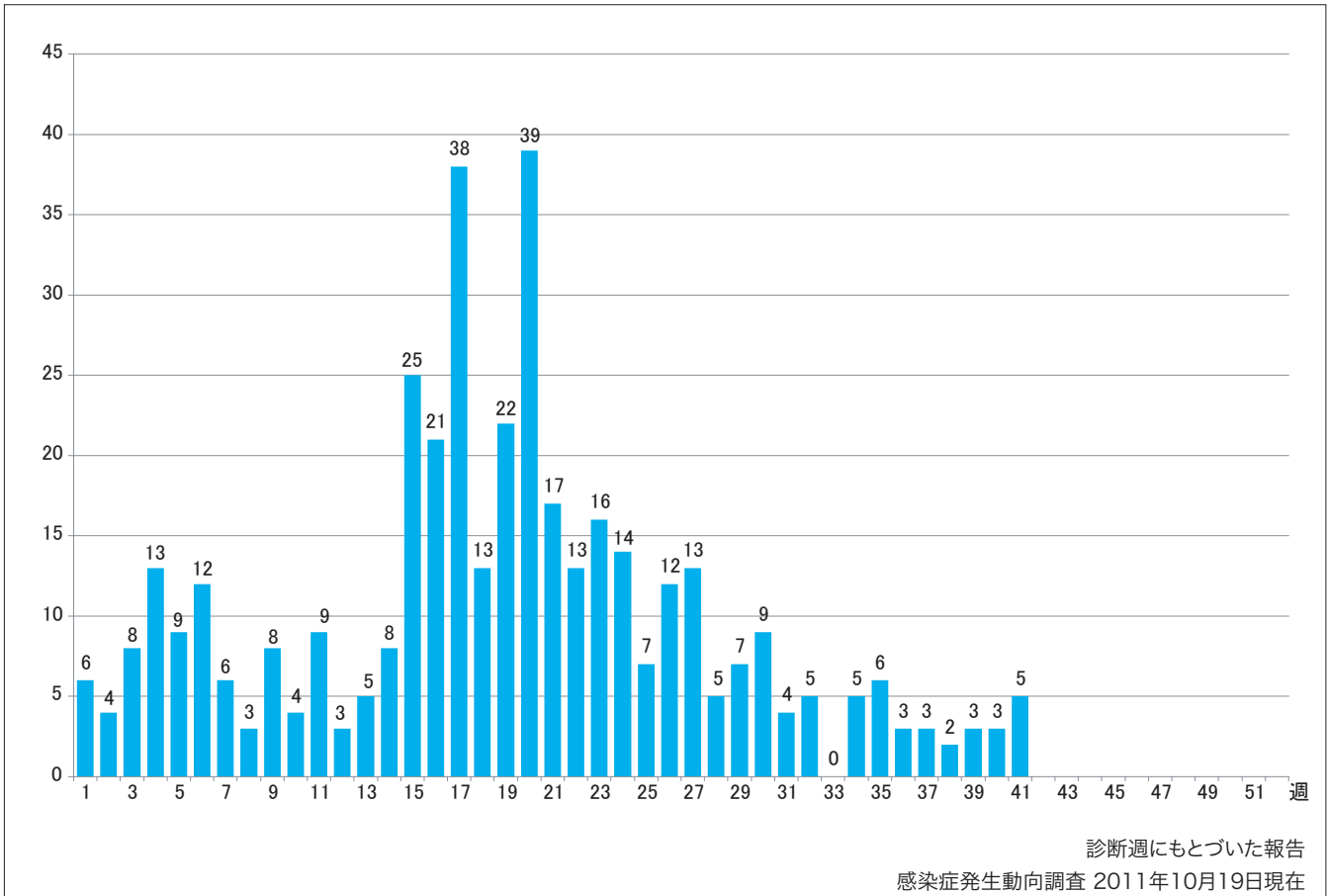


1. 週別麻疹報告数 2011年 第1~41週 (n=408)

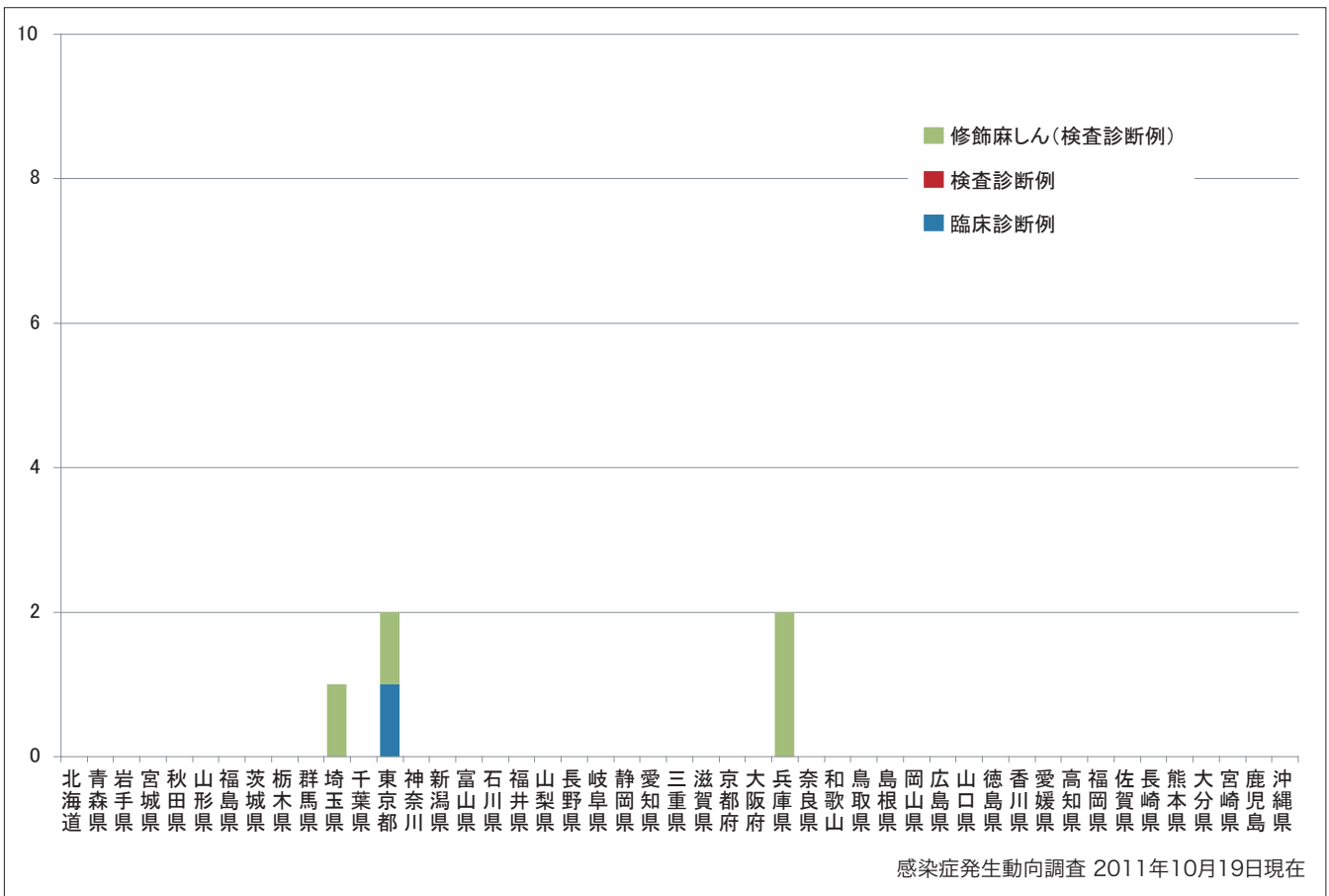
Weekly measles cases from week 1 to week 41 in 2011 (based on diagnosed week as of October 19, 2011).



2. 都道府県別病型別麻疹報告数2011年 第41週 (n=5)

Reported measles cases by prefecture and methods of diagnosis in week 41, 2011 (as of October 19, 2011).

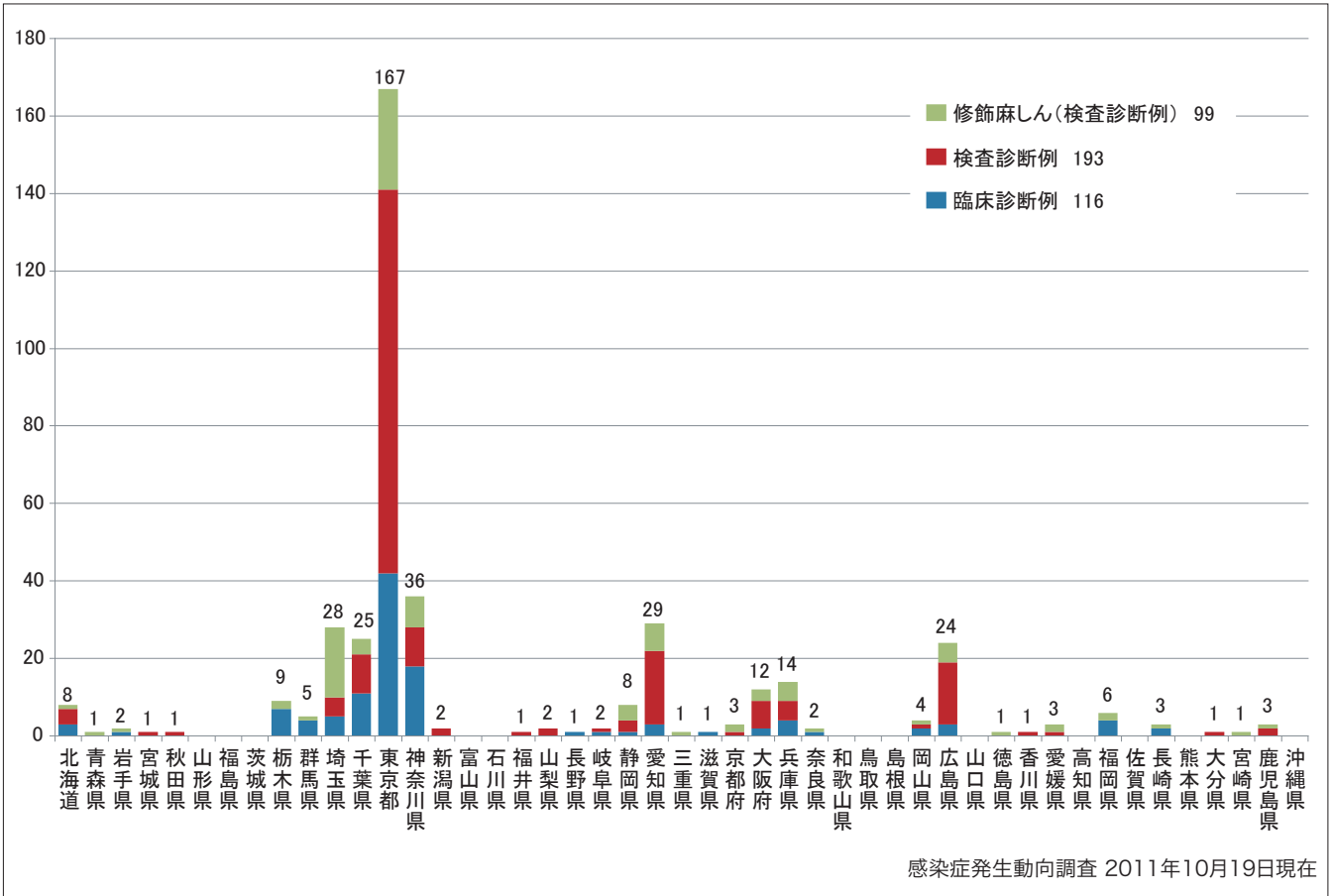
■ Clinically diagnosed ■ Laboratory diagnosed ■ Modified measles, laboratory diagnosed



3. 都道府県別病型別麻疹累積報告数 2011年 第1~41週 (n=408)

Cumulative measles cases by prefecture and methods of diagnosis from week 1 to week 41 2011 (as of October 19, 2011).

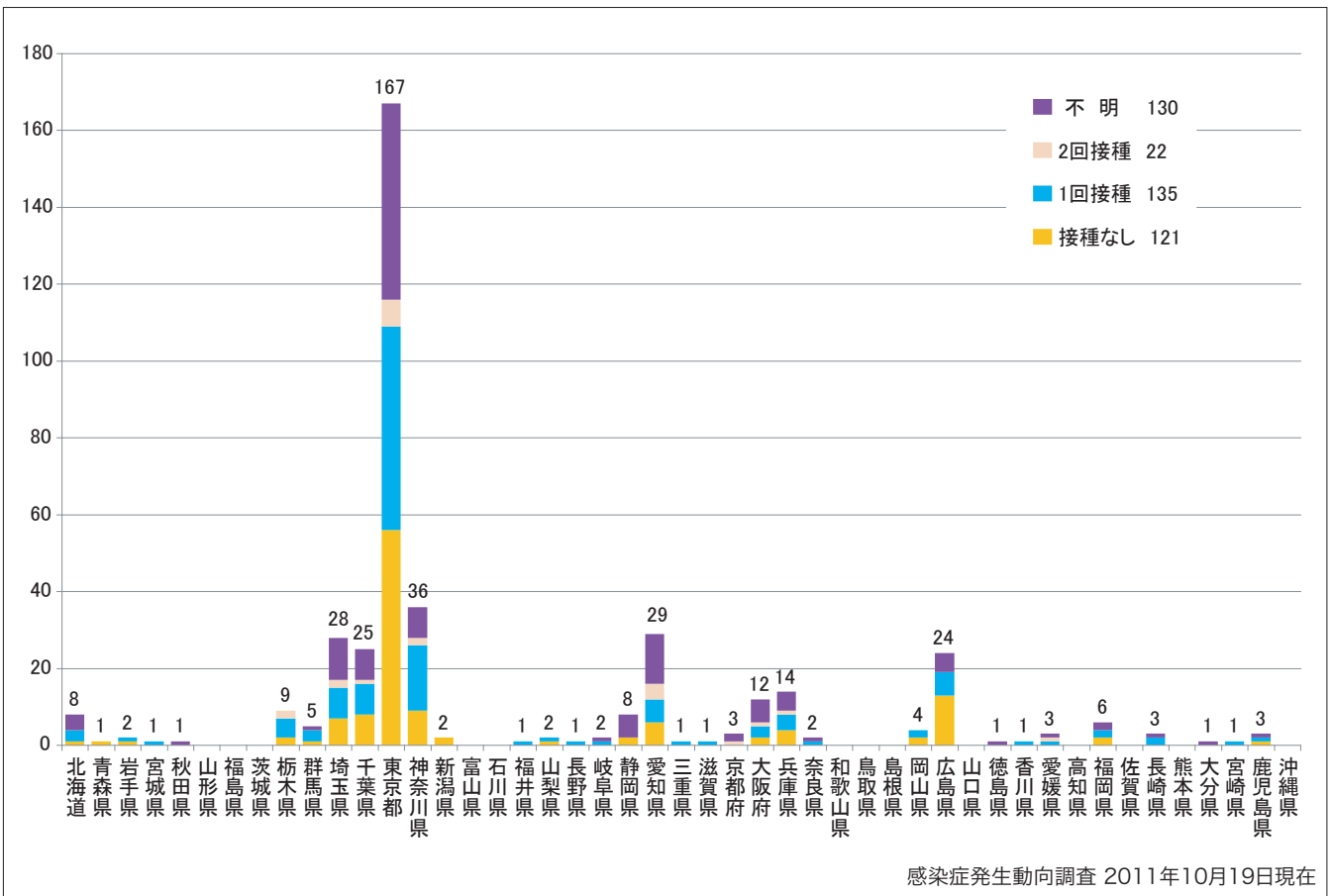
■ Clinically diagnosed ■ Laboratory diagnosed ■ Modified measles, laboratory diagnosed



4. 都道府県別接種歴別麻疹累積報告数 2011年 第1~41週 (n=408)

Cumulative measles cases by prefecture and vaccinated status from week 1 to week 41, 2011 (as of October 19, 2011).

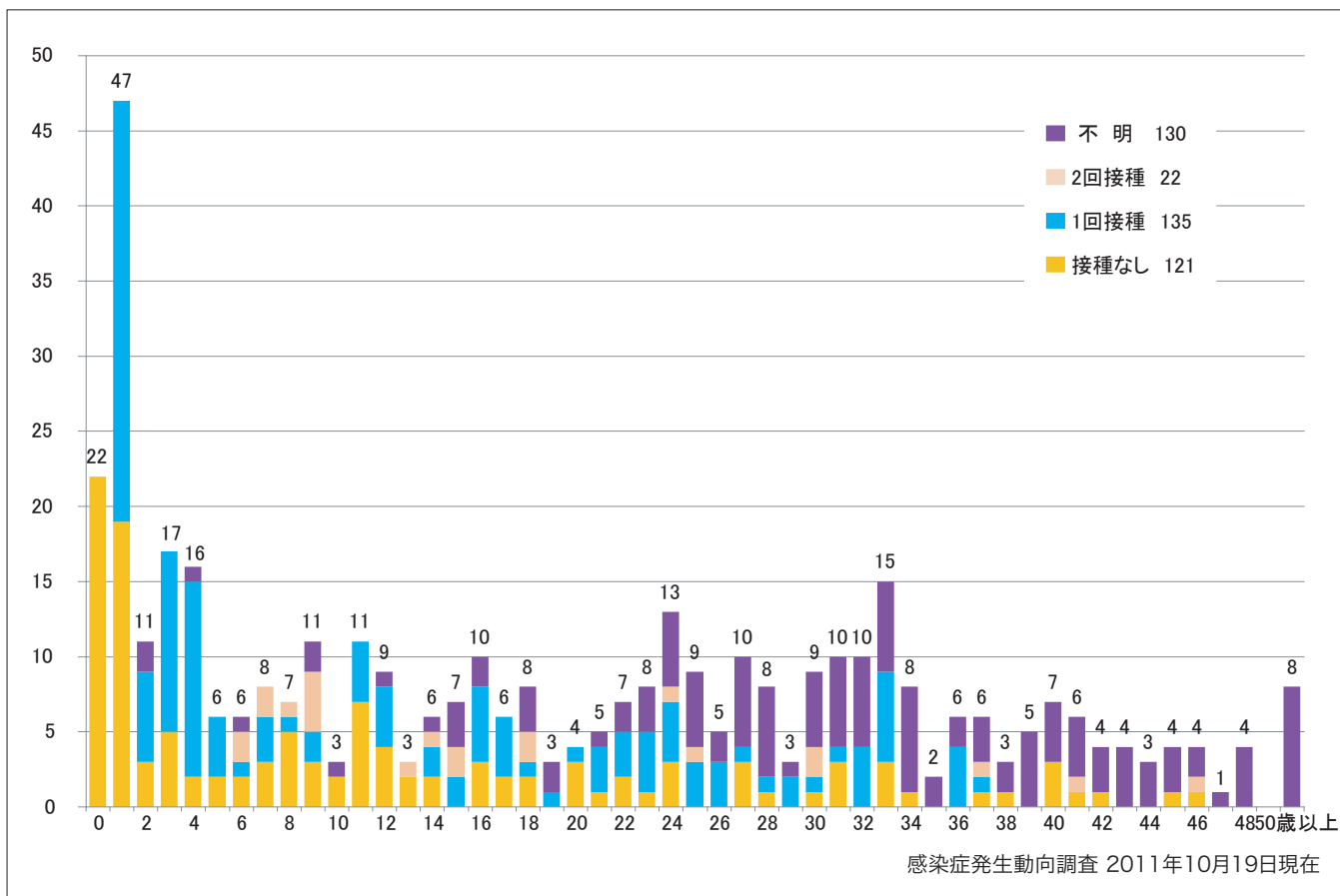
■ None ■ MCV1 ■ MCV2 ■ Unknown



5. 年齢群別接種歴別麻疹累積報告数 2011年 第1~41週 (n=408)

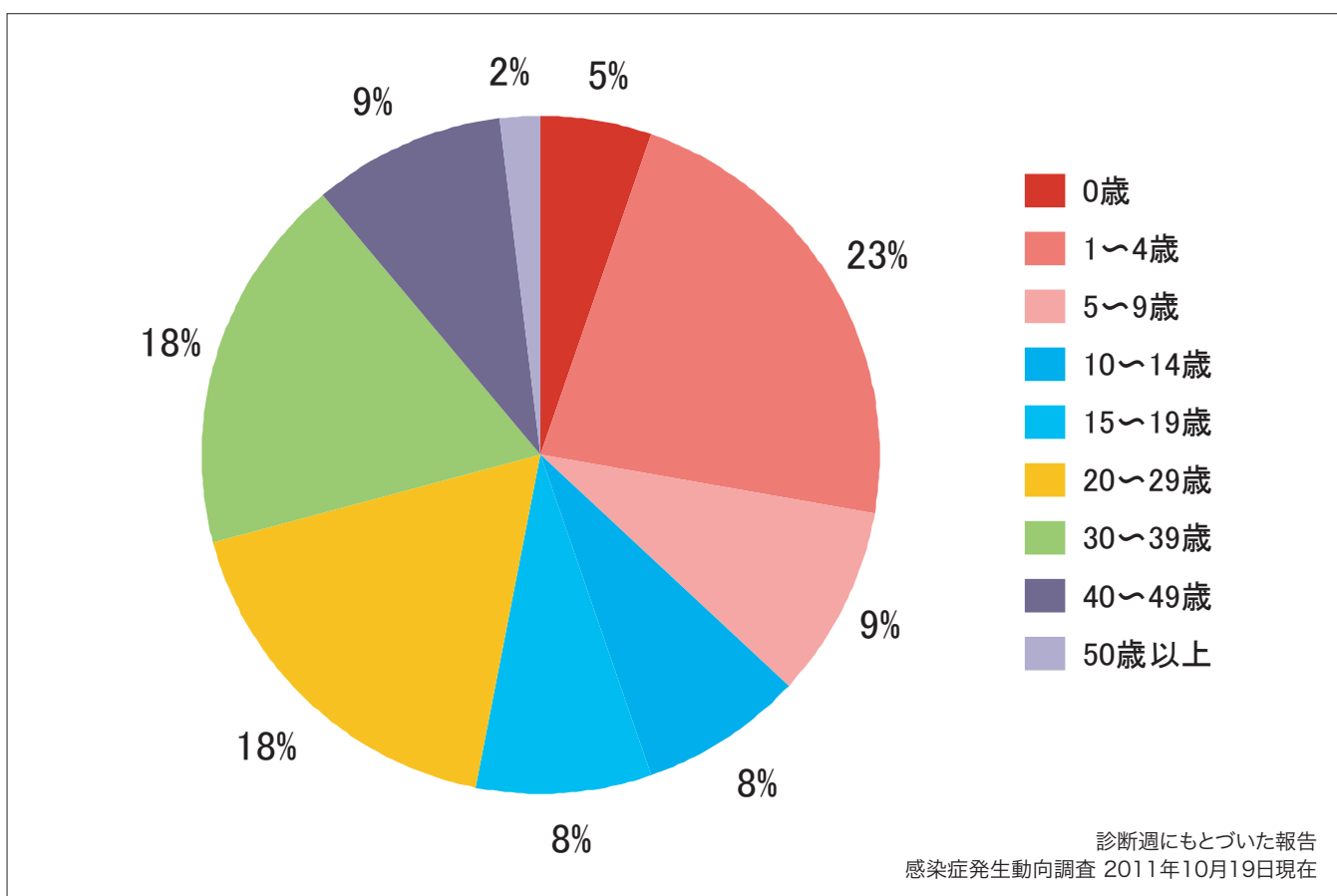
Cumulative measles cases by age and vaccinated status from week 1 to week 41, 2011 (as of October 19, 2011).

None MCV1 MCV2 Unknown



6. 年齢群別麻疹累積報告数割合 2011年 第1~41週 (n=408)

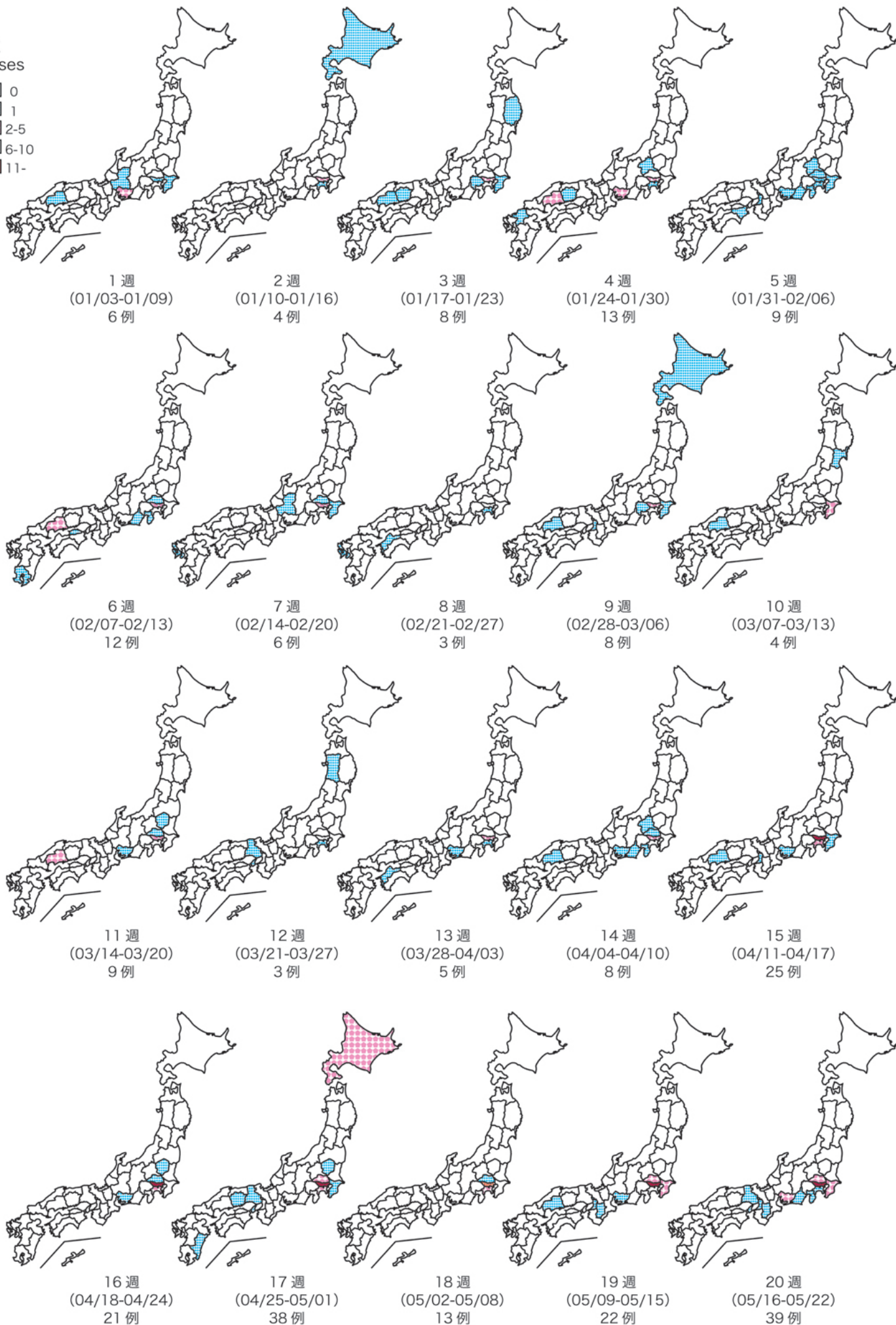
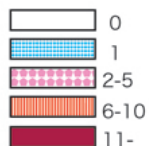
Percentage of cumulative measles cases by age group from week 1 to week 41, 2011 (as of October 19, 2011).



9. 都道府県別麻疹週別報告状況 2011年 第1~41週 感染症発生動向調査

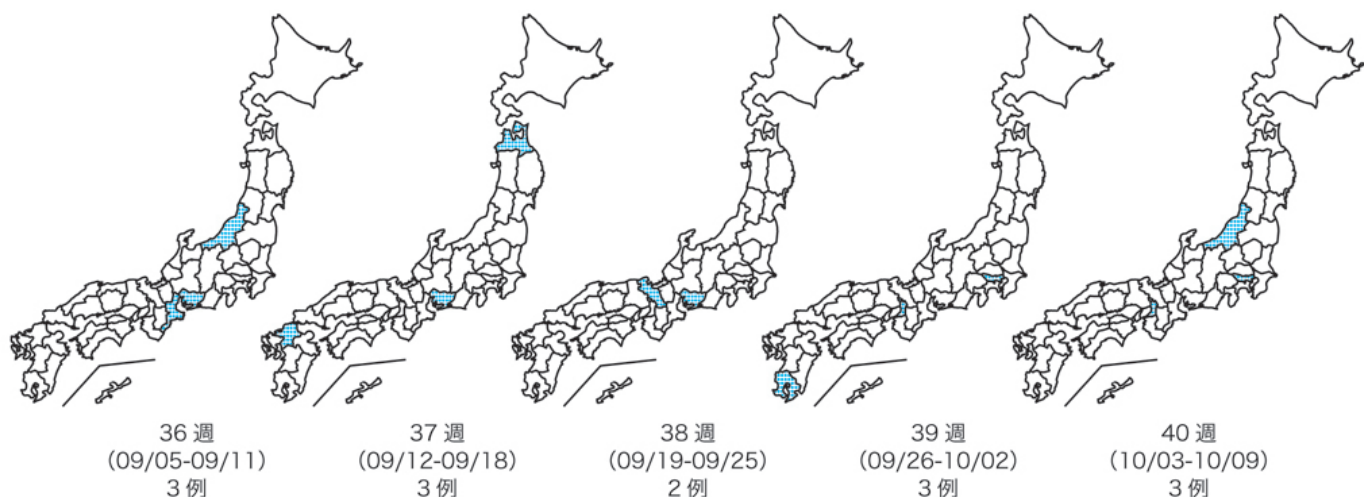
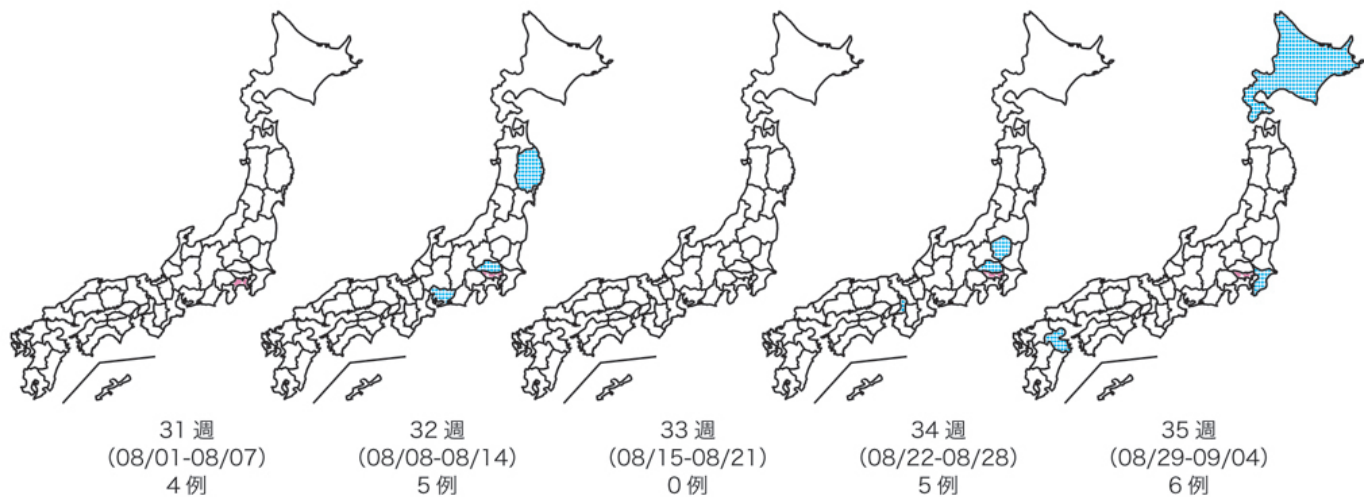
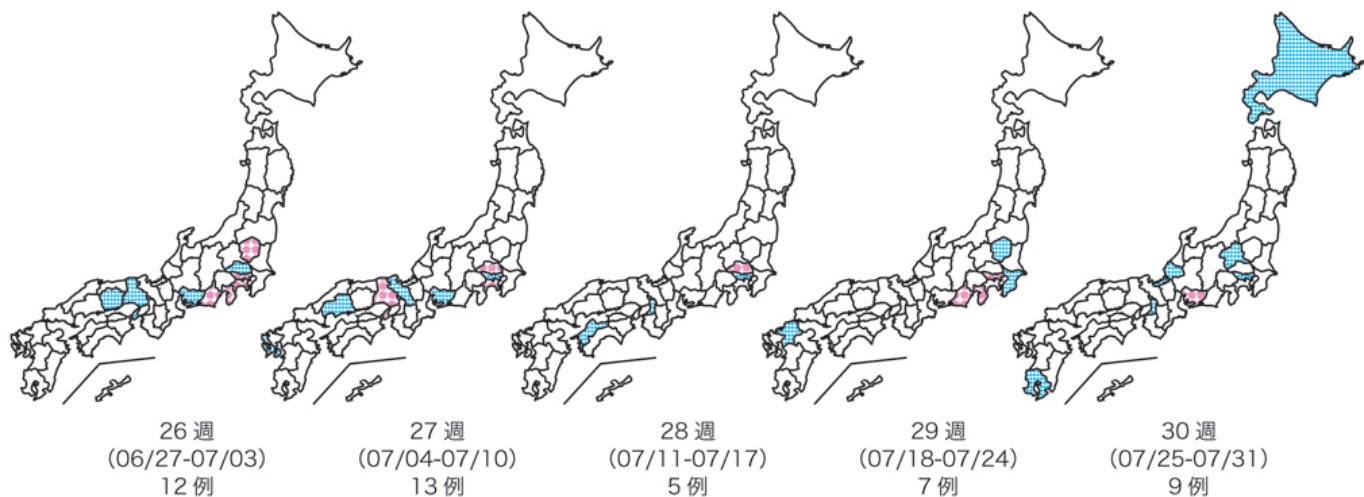
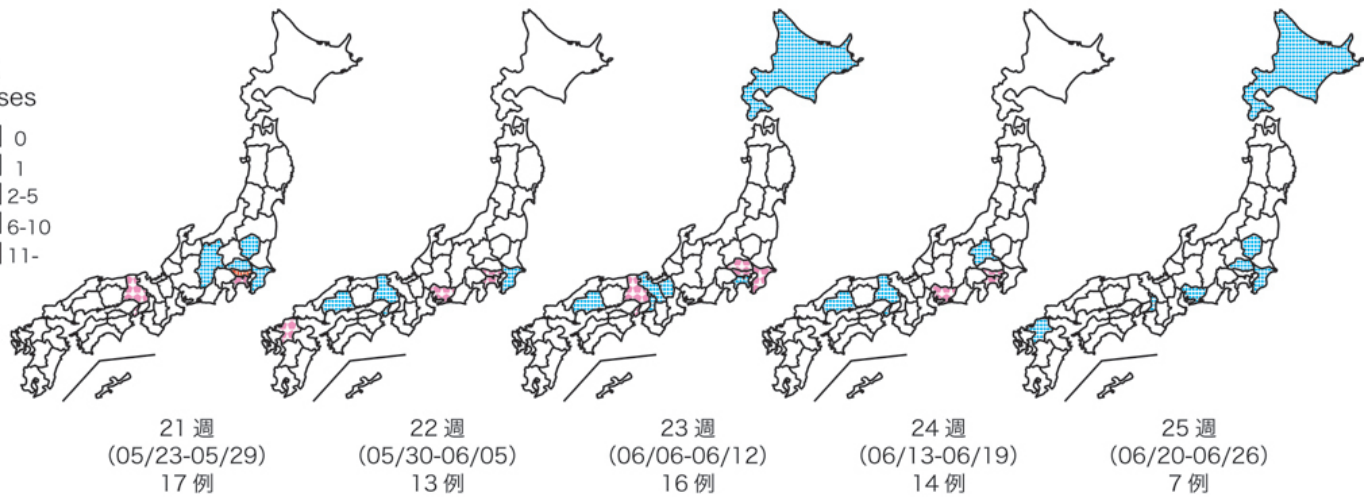
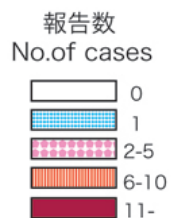
Weekly measles cases from week 1 to week 41, 2011 (based on diagnosed week as of October 19, 2011)

報告数
No. of cases



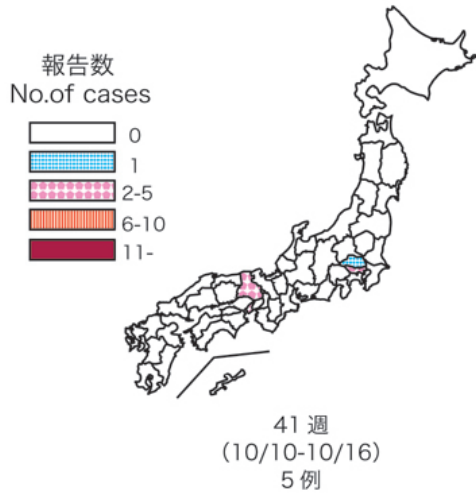
9. 都道府県別麻疹週別報告状況 2011年 第1~41週 感染症発生動向調査

Weekly measles cases from week 1 to week 41, 2011 (based on diagnosed week as of October 19, 2011)



9. 都道府県別麻疹週別報告状況 2011年 第1~41週 感染症発生動向調査

Weekly measles cases from week 1 to week 41, 2011 (based on diagnosed week as of October 19, 2011)



感染症発生動向調査 2011年10月19日現在