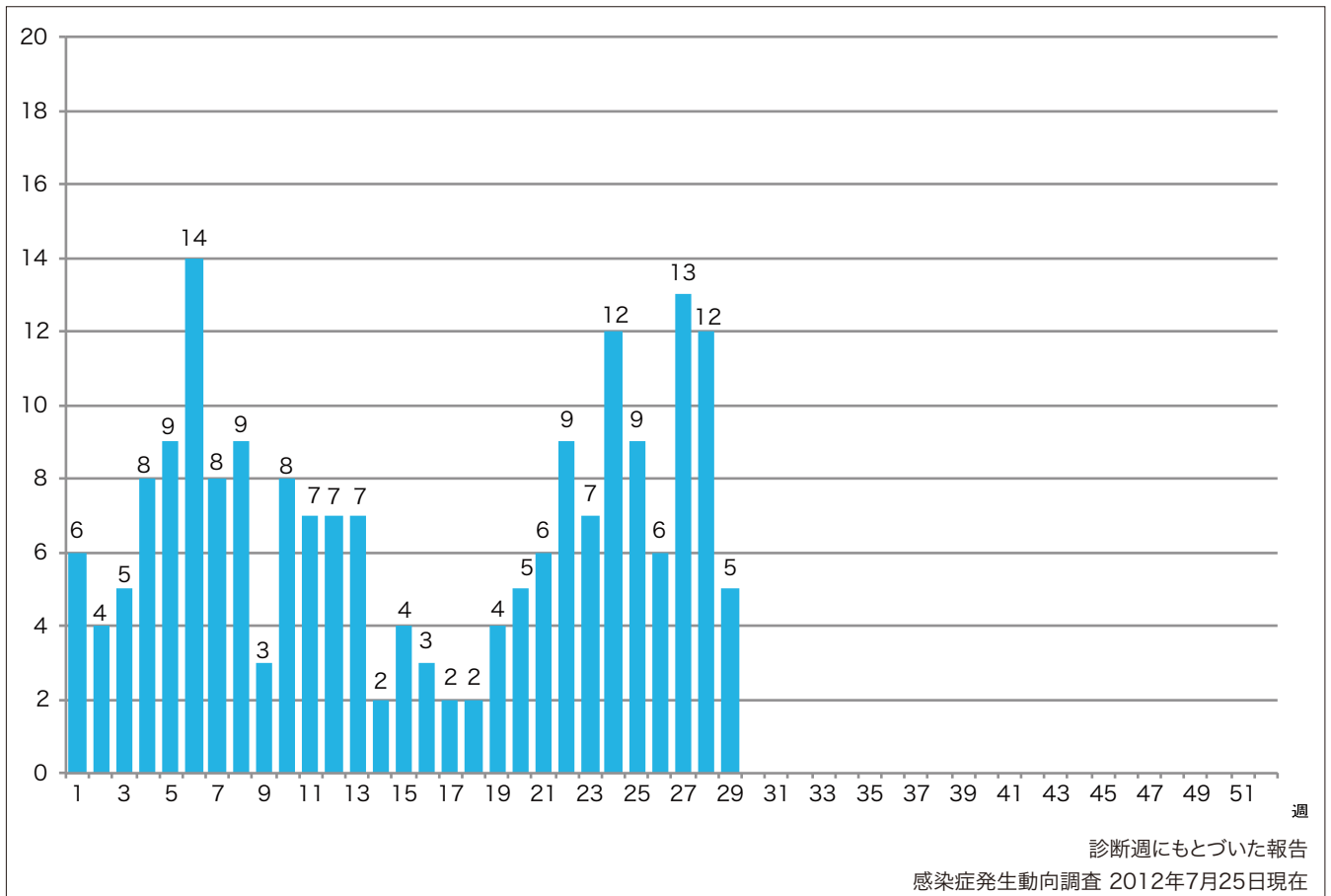


1. 週別麻疹報告数 2012年 第1~29週 (n=196)

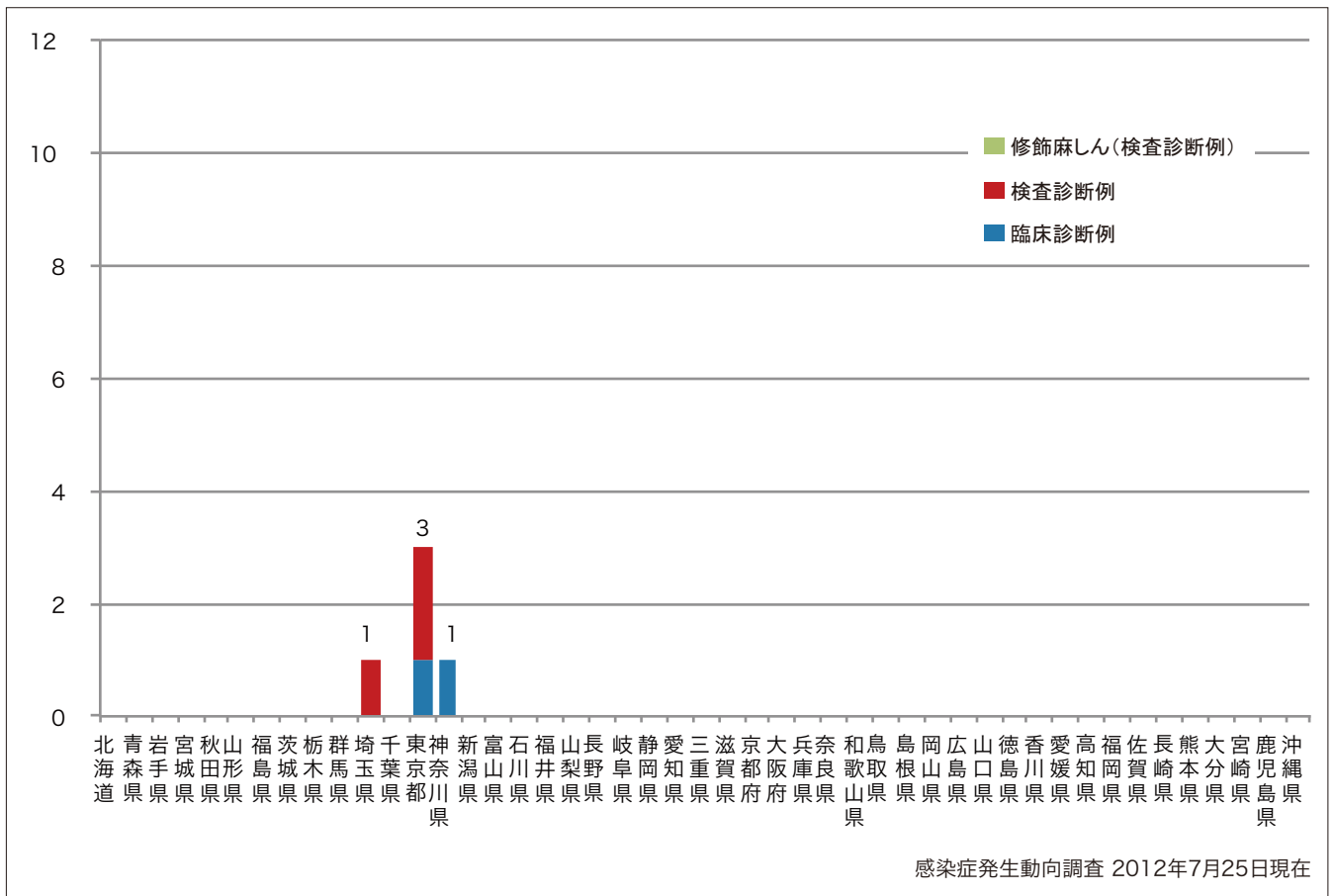
Weekly measles cases from week 1 to week 29, 2012 (based on diagnosed week as of July 25, 2012).



2. 都道府県別病型別麻疹報告数2012年 第29週 (n=5)

Reported measles cases by prefecture and methods of diagnosis in week 29, 2012 (as of July 25, 2012).

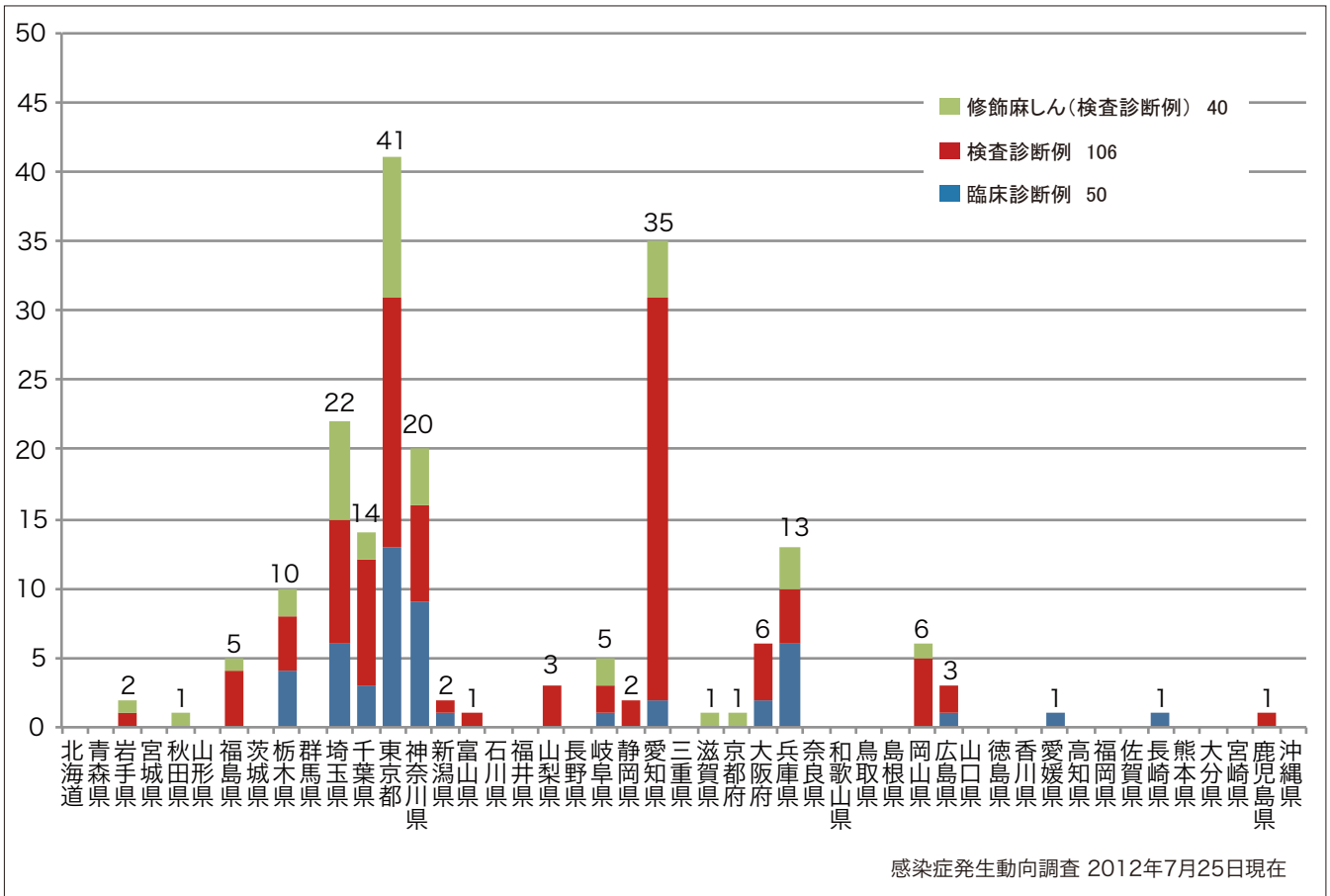
■ Clinically diagnosed ■ Laboratory diagnosed ■ Modified measles, laboratory diagnosed



3. 都道府県別病型別麻疹累積報告数 2012年 第1~29週 (n=196)

Cumulative measles cases by prefecture and methods of diagnosis from week 1 to week 29, 2012 (as of July 25, 2012).

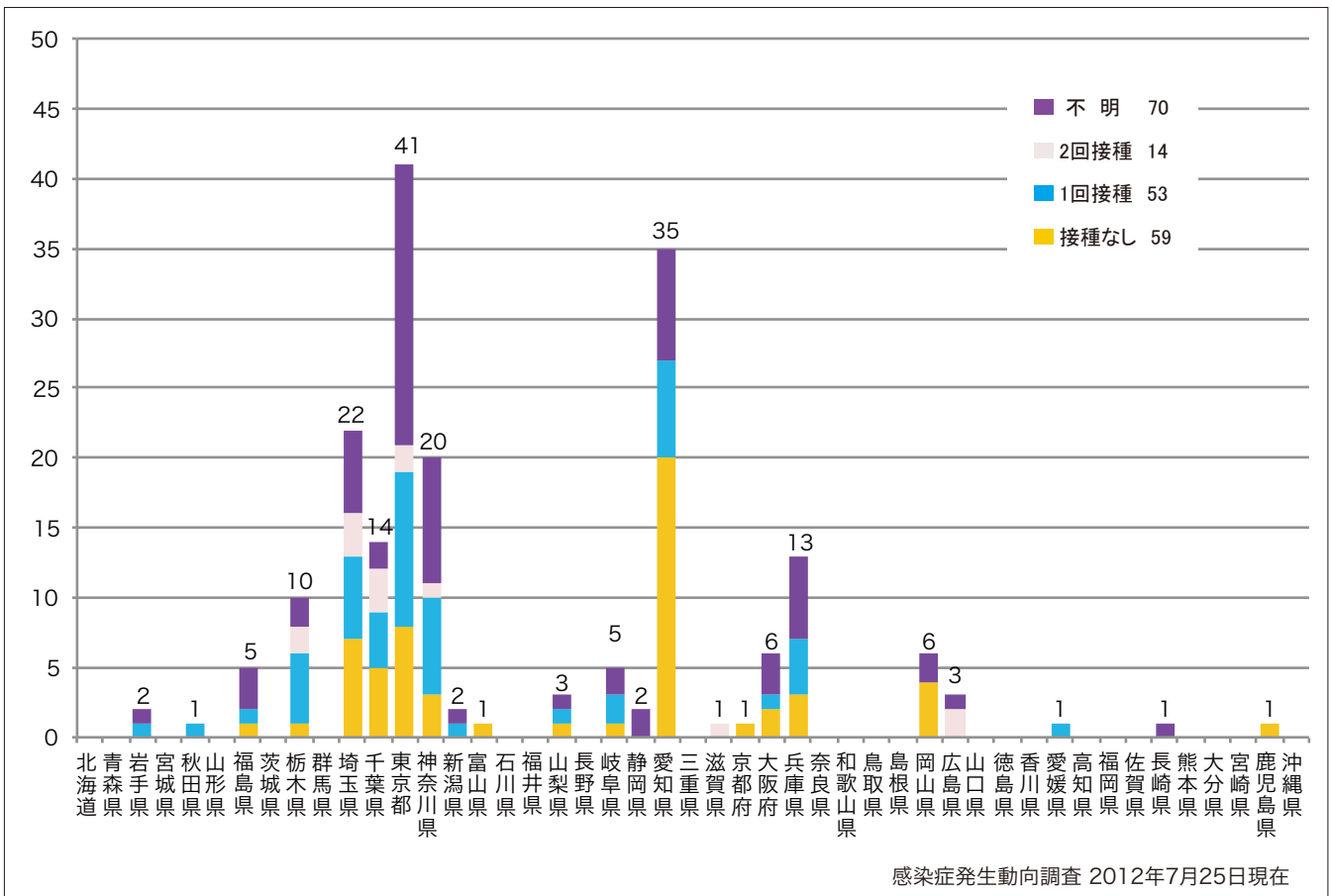
■ Clinically diagnosed ■ Laboratory diagnosed ■ Modified measles, laboratory diagnosed



4. 都道府県別接種歴別麻疹累積報告数 2012年 第1~29週 (n=196)

Cumulative measles cases by prefecture and vaccinated status from week 1 to week 29, 2012 (as of July 25, 2012).

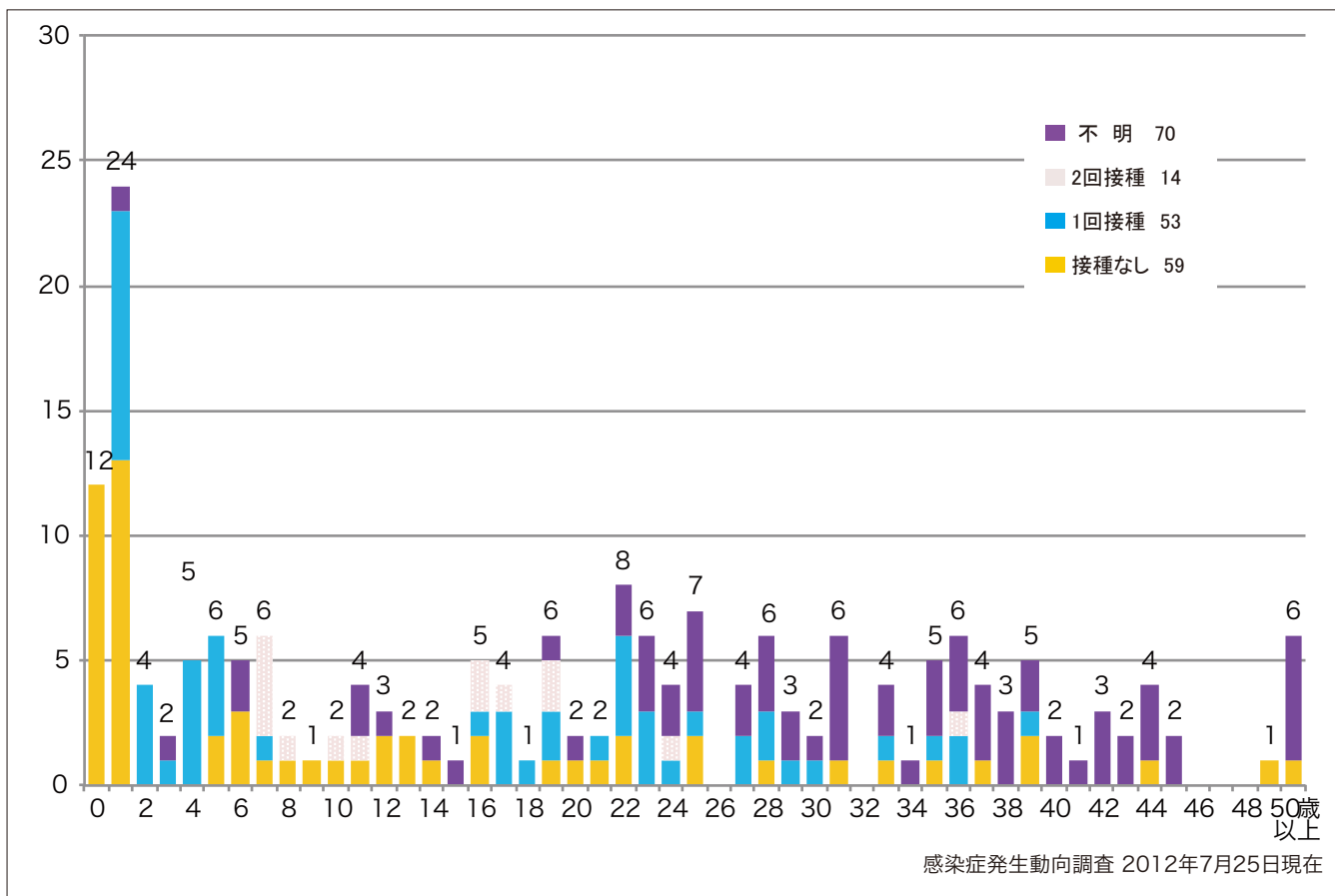
■ None ■ MCV1 ■ MCV2 ■ Unknown



5. 年齢群別接種歴別麻疹累積報告数 2012年 第1~29週 (n=196)

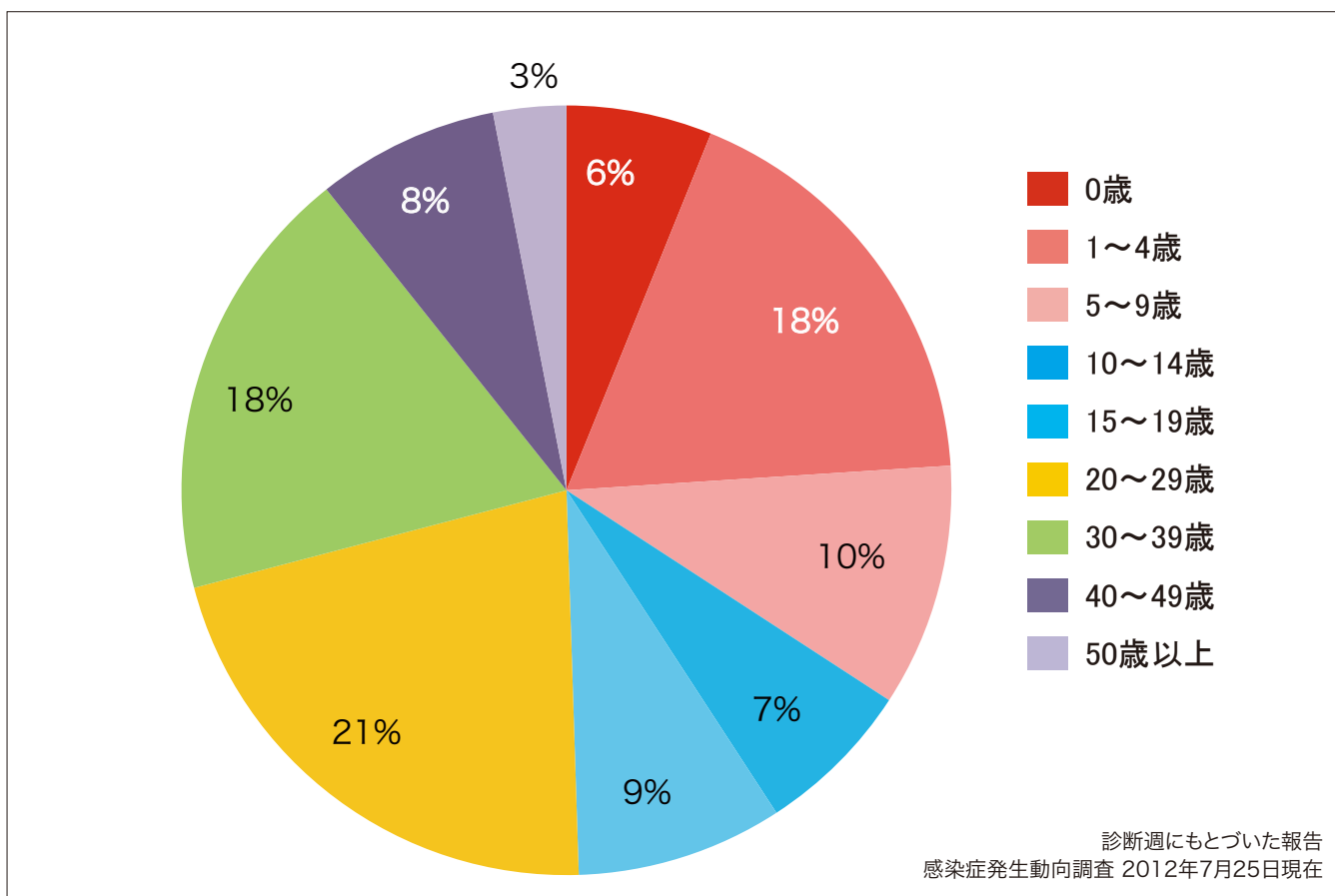
Cumulative measles cases by age and vaccinated status from week 1 to week 28, 2012 (as of July 25, 2012).

None MCV1 MCV2 Unknown



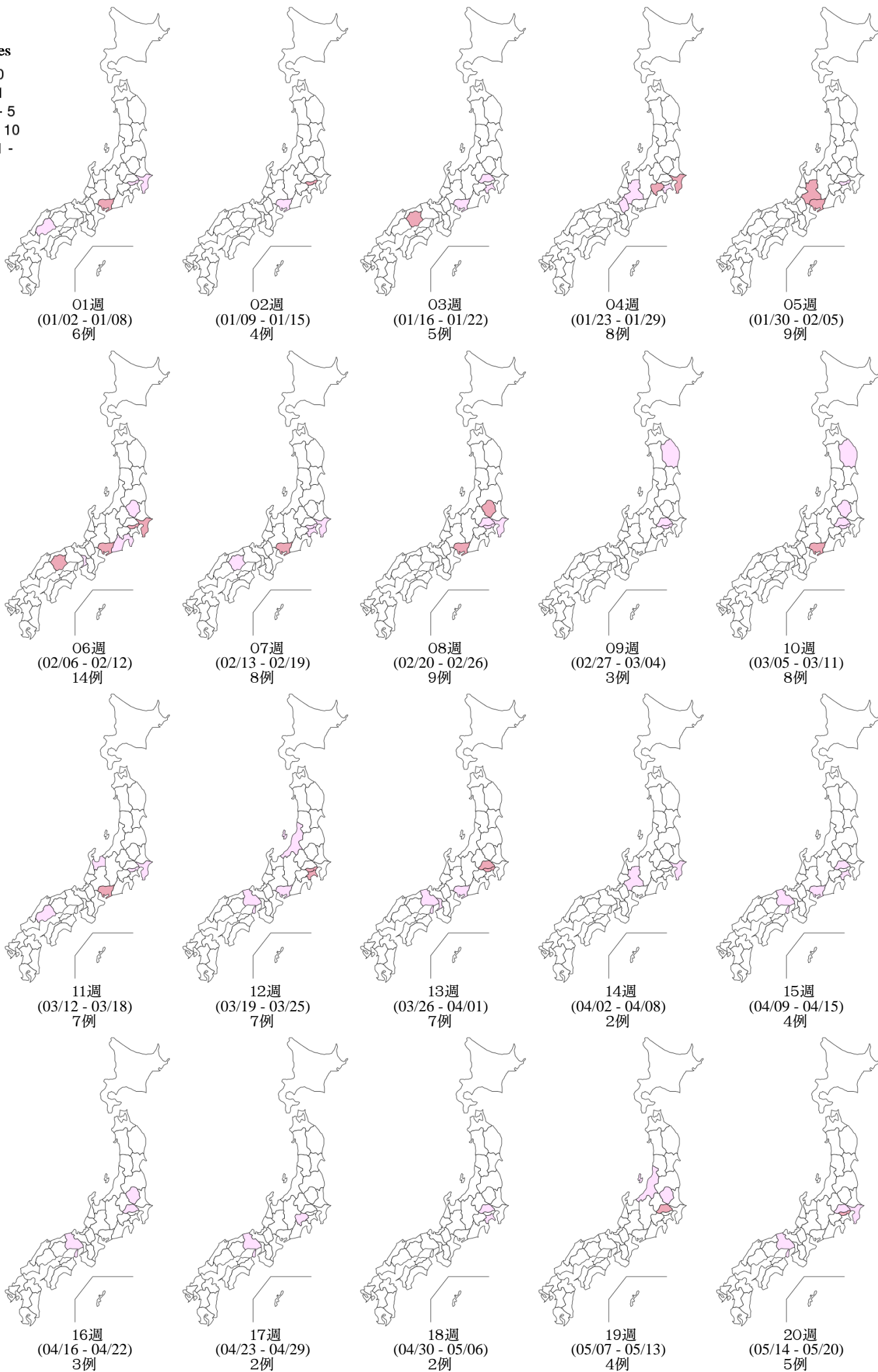
6. 年齢群別麻疹累積報告数割合 2012年 第1~29週 (n=196)

Percentage of cumulative measles cases by age group from week 1 to week 28, 2012 (as of July 25, 2012).



9. 都道府県別麻疹週別報告状況 2012年 第1~29週 感染症発生動向調査
 Weekly measles cases from week 1 to week 29, 2012 (based on diagnosed week as of July 25, 2012)

2012年07月25日現在



9. 都道府県別麻疹週別報告状況 2012年 第1~29週 感染症発生動向調査

2012年07月25日現在

Weekly measles cases from week 1 to week 29, 2012 (based on diagnosed week as of July 25, 2012)

