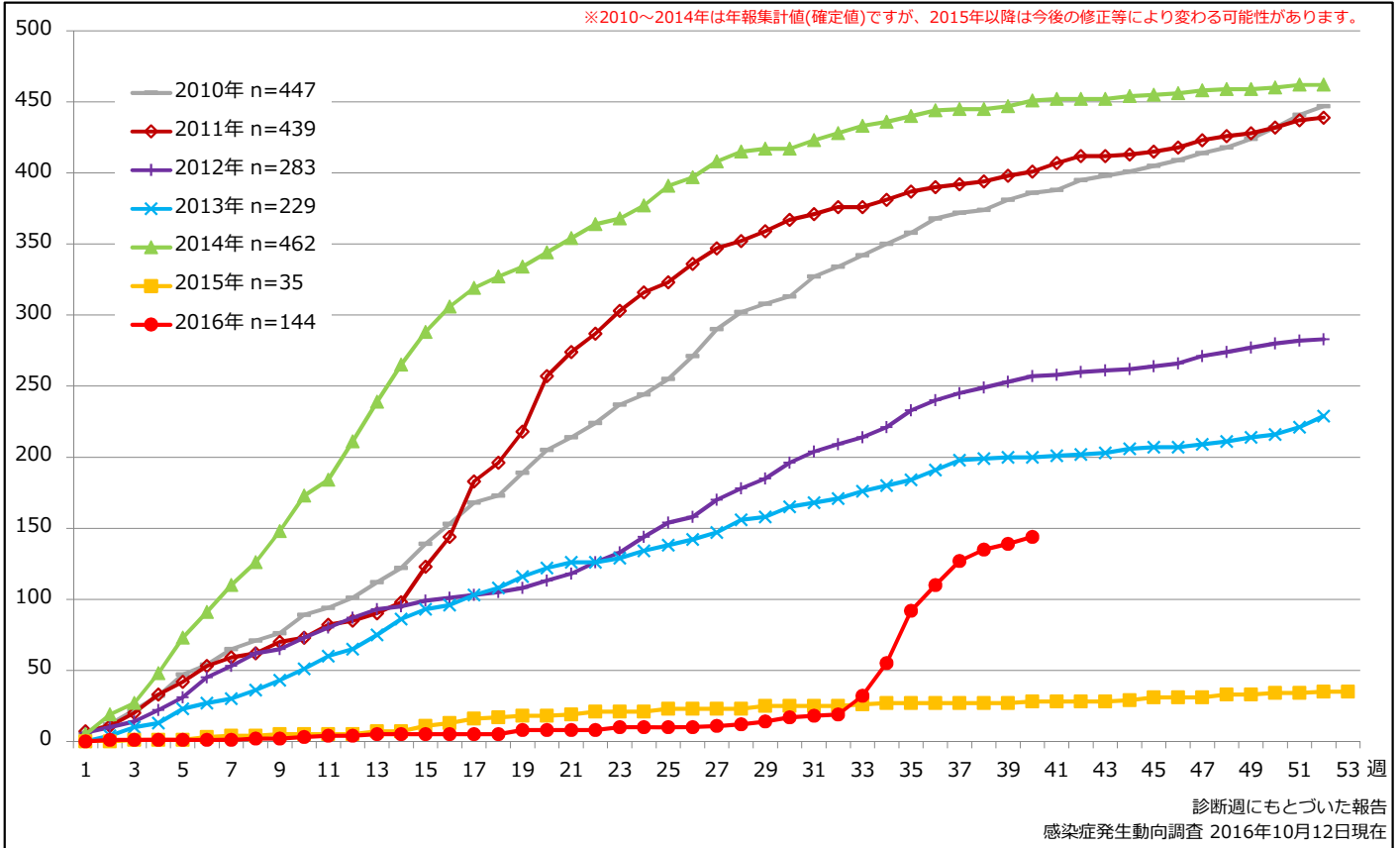


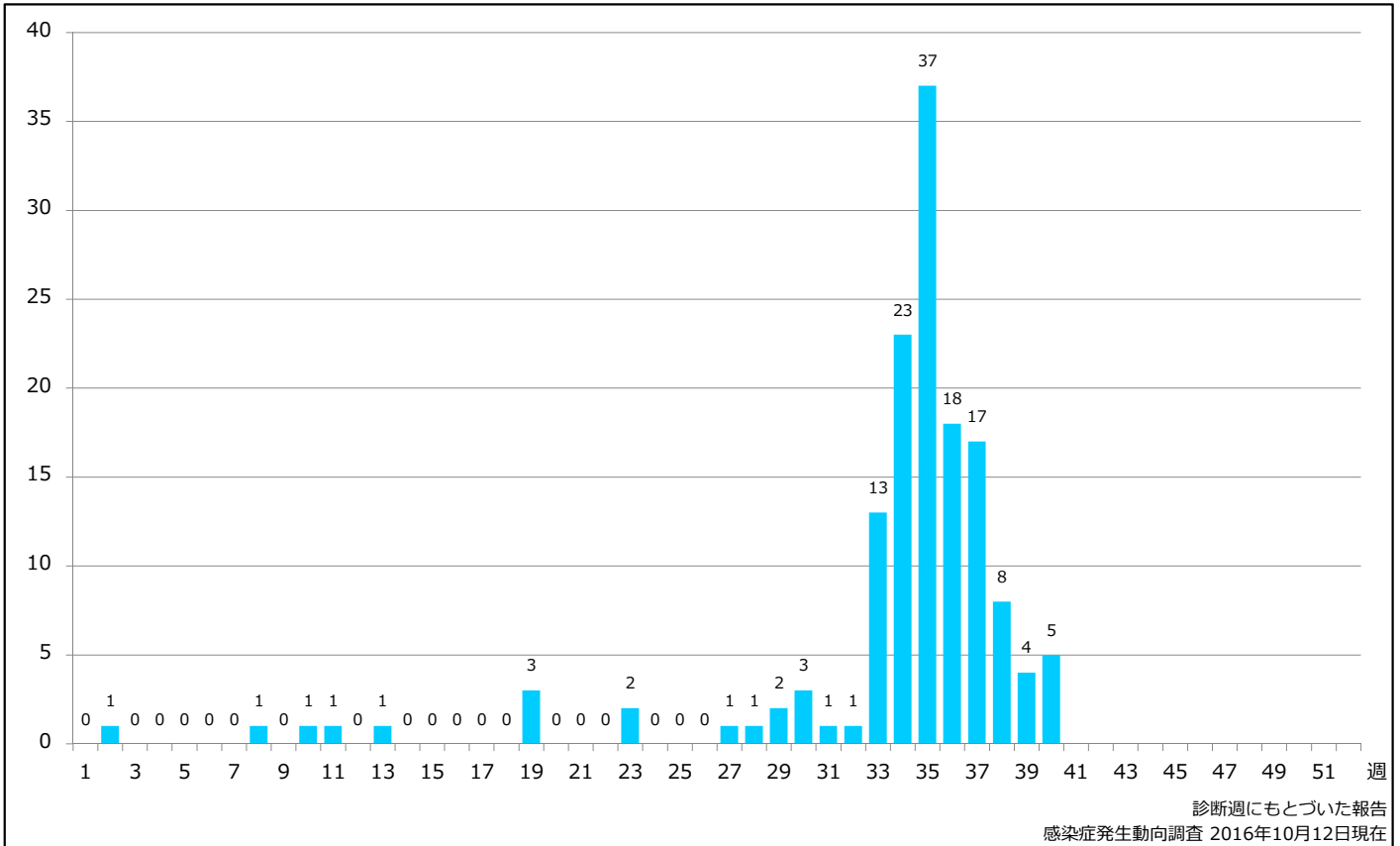
1. 麻疹累積報告数の推移 2010~2016年 (第1~40週)

Cumulative measles cases by week, 2010-2016 (week 1-40) (based on diagnosed week as of October 12, 2016)



2. 週別麻疹報告数 2016年 第1~40週 (n=144)

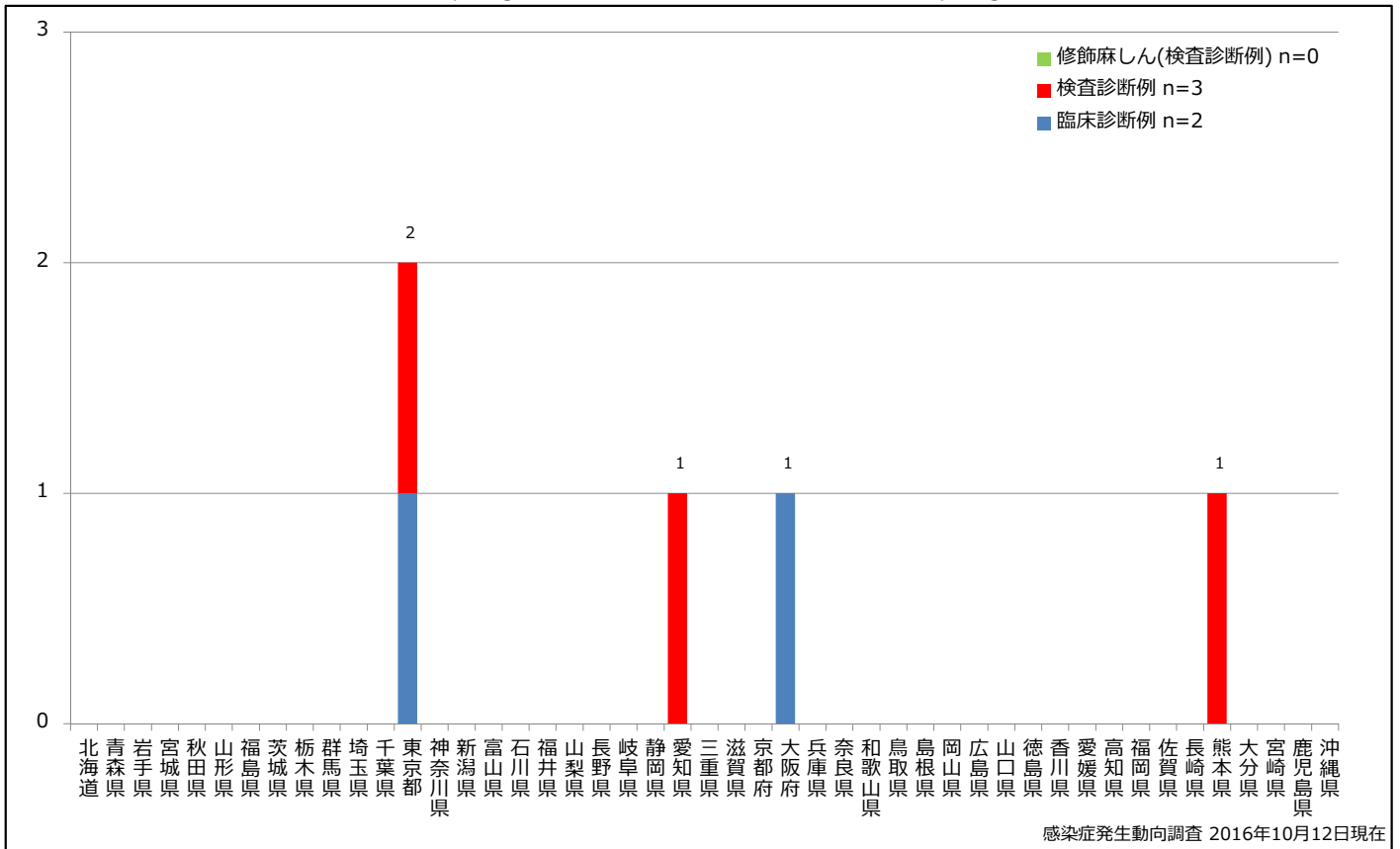
Weekly measles cases, week 1-40, 2016 (based on diagnosed week as of October 12, 2016)



3. 都道府県別病型別麻疹報告数 2016年 第40週 (n=5)

Reported measles cases by prefecture and methods of diagnosis in week 40, 2016 (as of October 12, 2016)

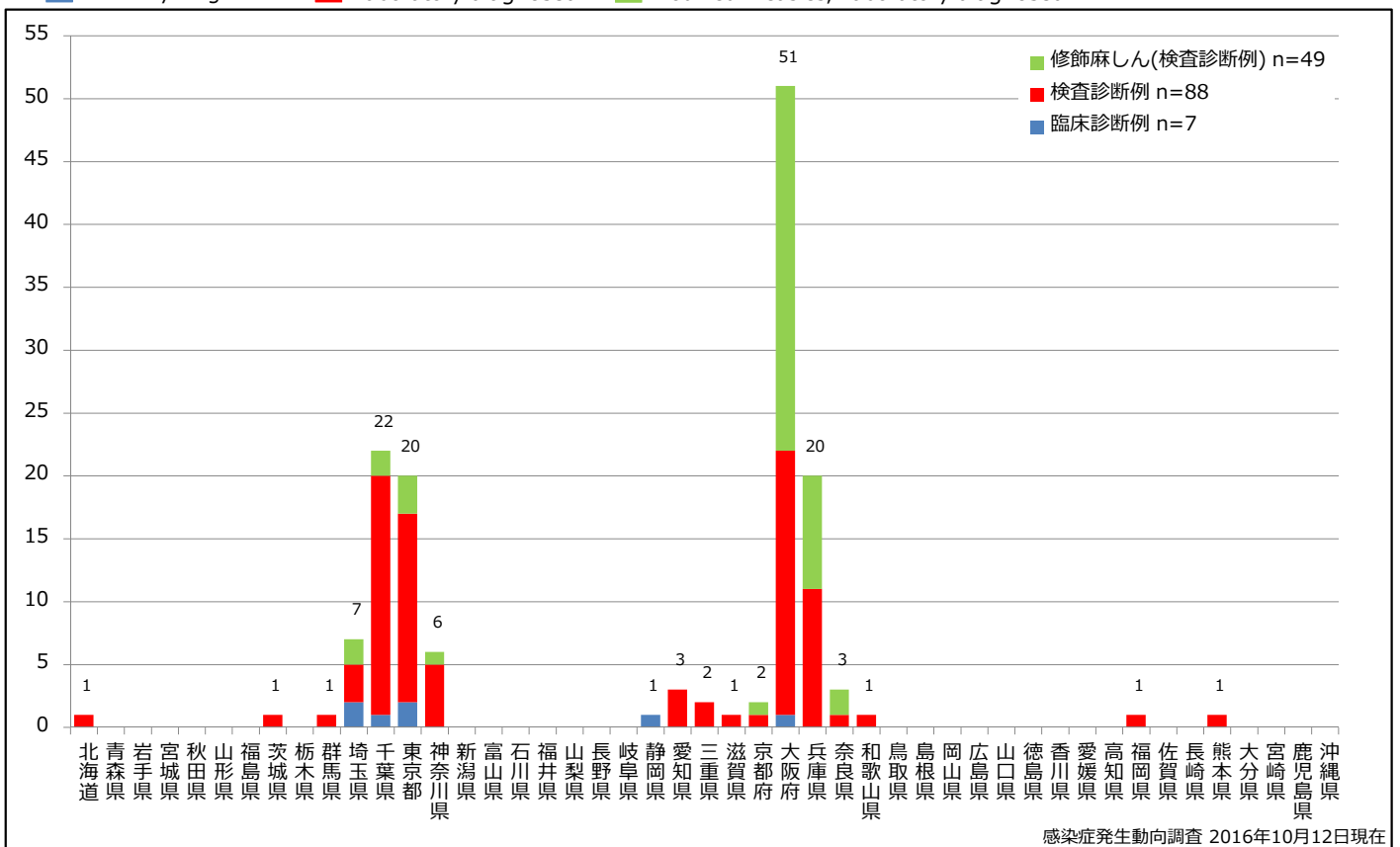
■ Clinically diagnosed
 ■ Laboratory diagnosed
 ■ Modified measles, Laboratory diagnosed



4. 都道府県別病型別麻疹累積報告数 2016年 第1~40週 (n=144)

Cumulative measles cases by prefecture and methods of diagnosis, week 1-40, 2016 (as of October 12, 2016)

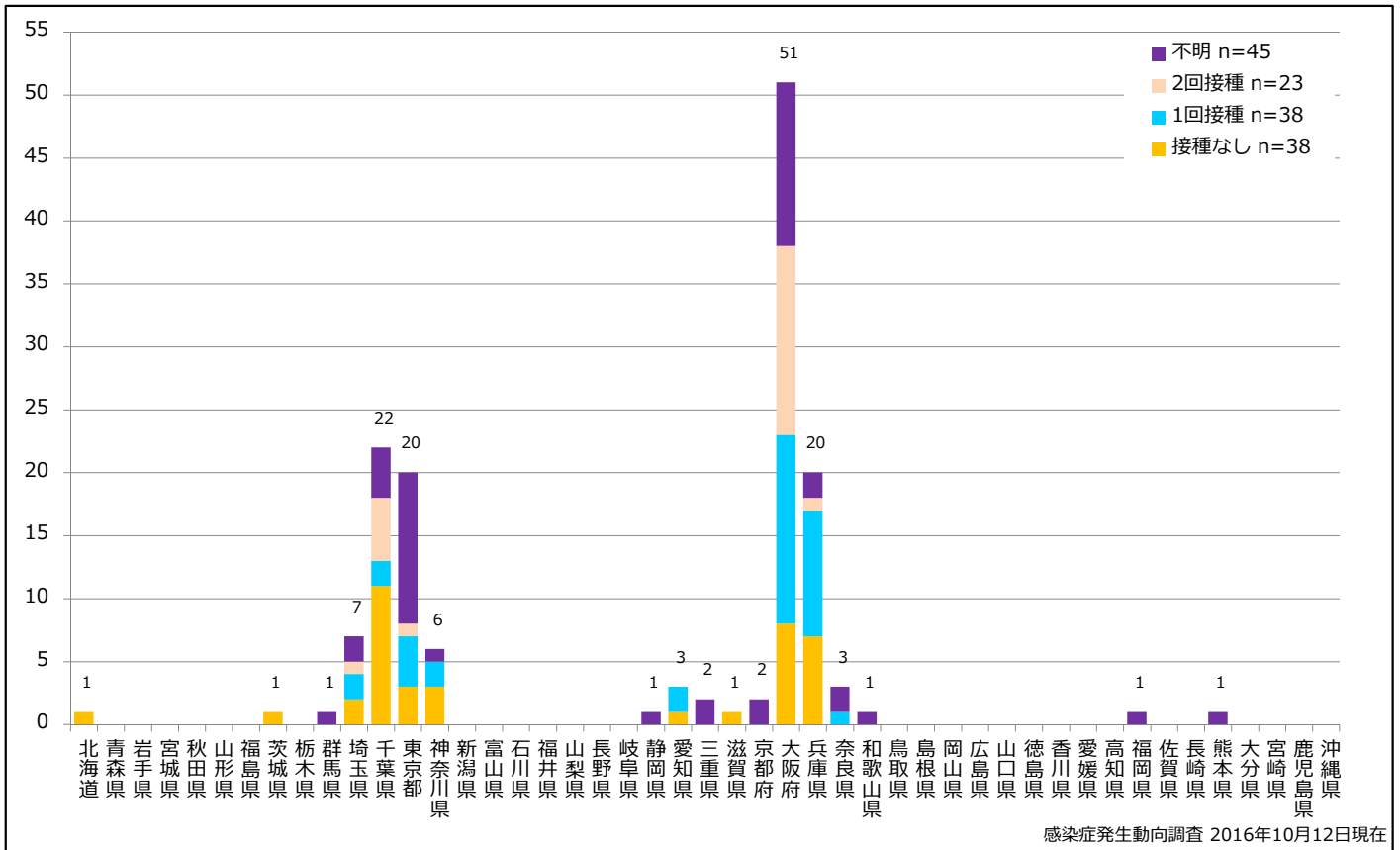
■ Clinically diagnosed
 ■ Laboratory diagnosed
 ■ Modified measles, Laboratory diagnosed



5. 都道府県別接種歴別麻疹累積報告数 2016年 第1~40週 (n=144)

Cumulative measles cases by prefecture and vaccinated status, week 1-40, 2016 (as of October 12, 2016)

None MCV1 MCV2 Unknown

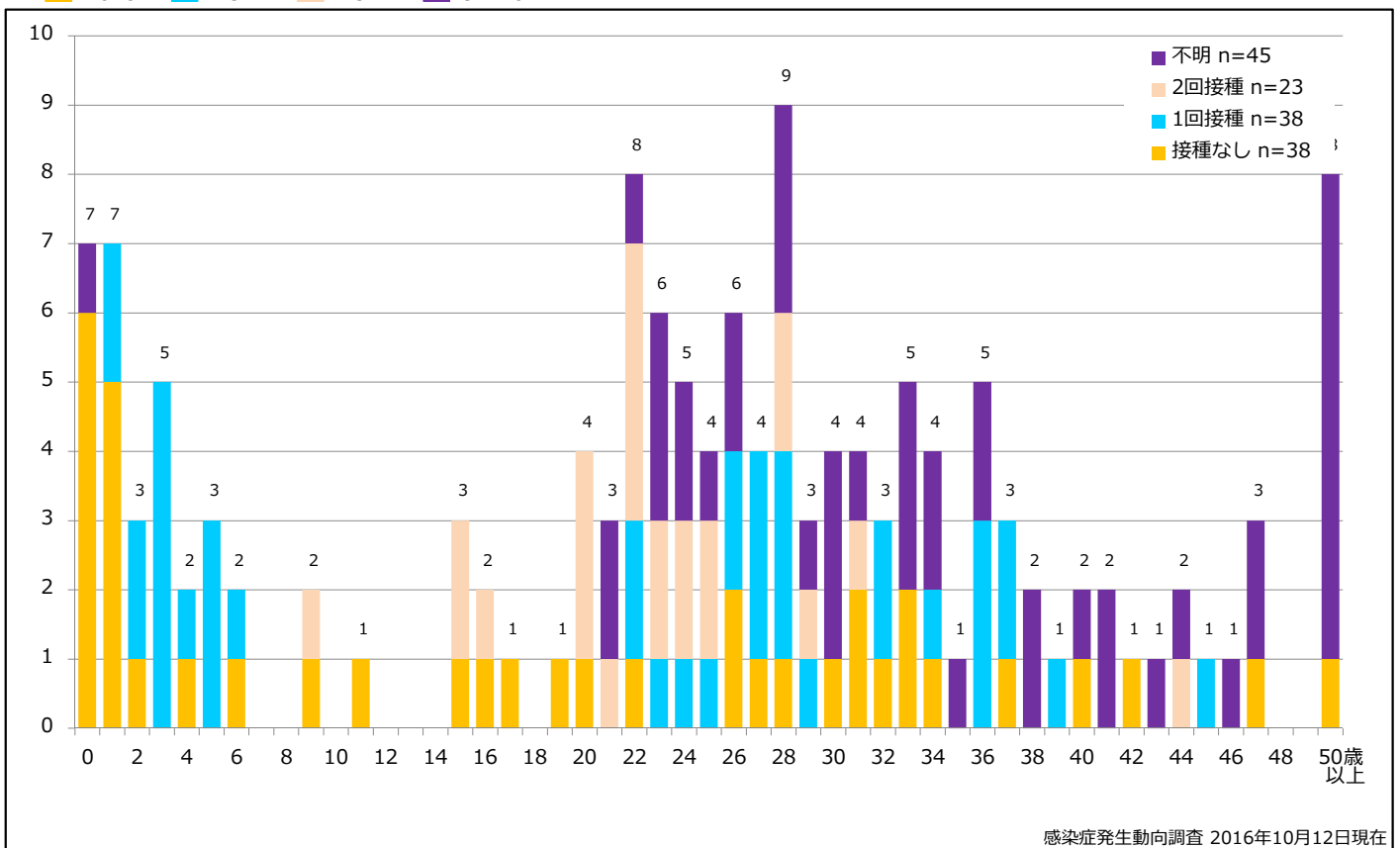


感染症発生動向調査 2016年10月12日現在

6. 年齢群別接種歴別麻疹累積報告数 2016年 第1~40週 (n=144)

Cumulative measles cases by age and vaccinated status, week 1-40, 2016 (as of October 12, 2016)

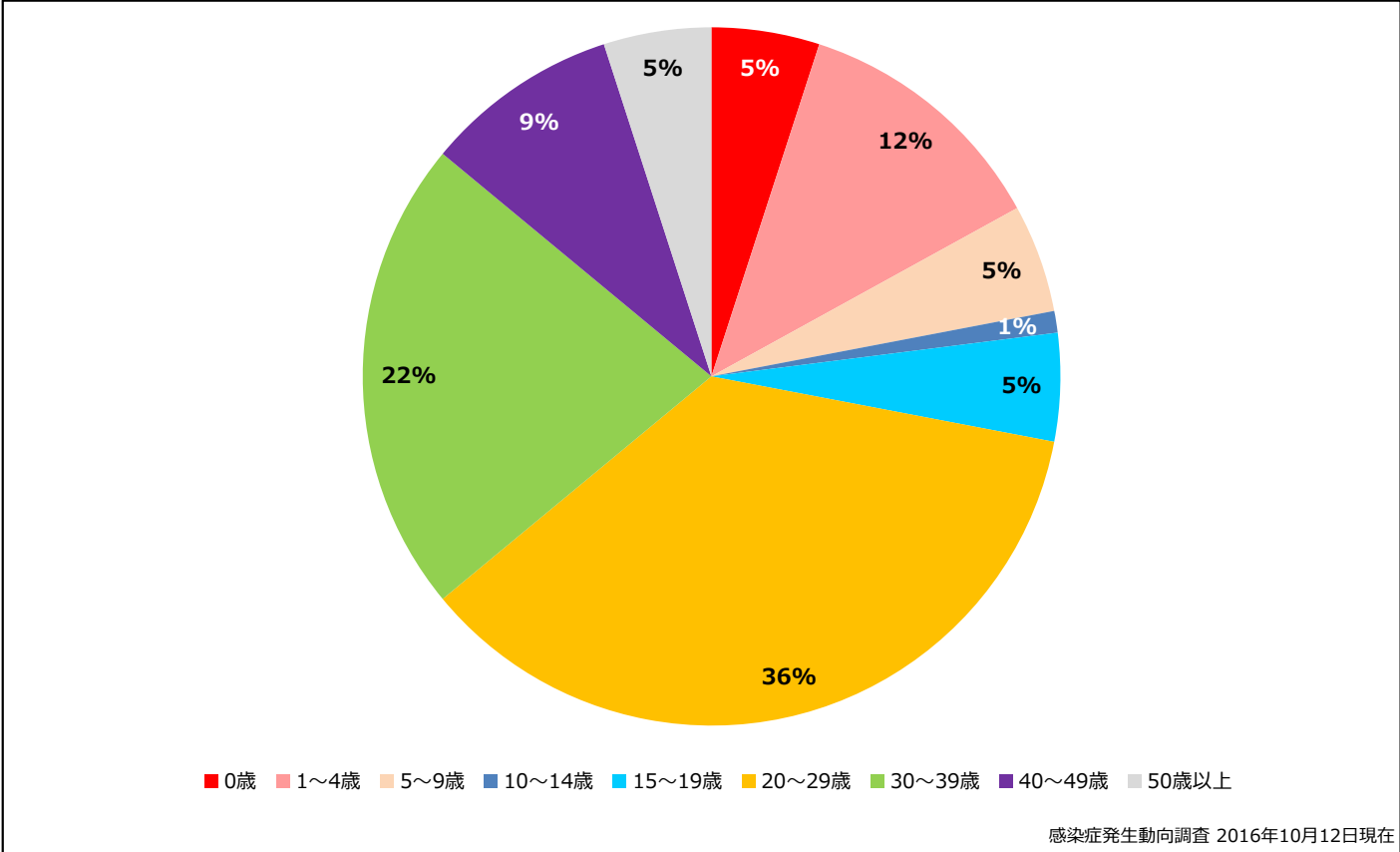
None MCV1 MCV2 Unknown



感染症発生動向調査 2016年10月12日現在

7. 年齢群別麻疹累積報告数割合 2016年 第1~40週 (n=144)

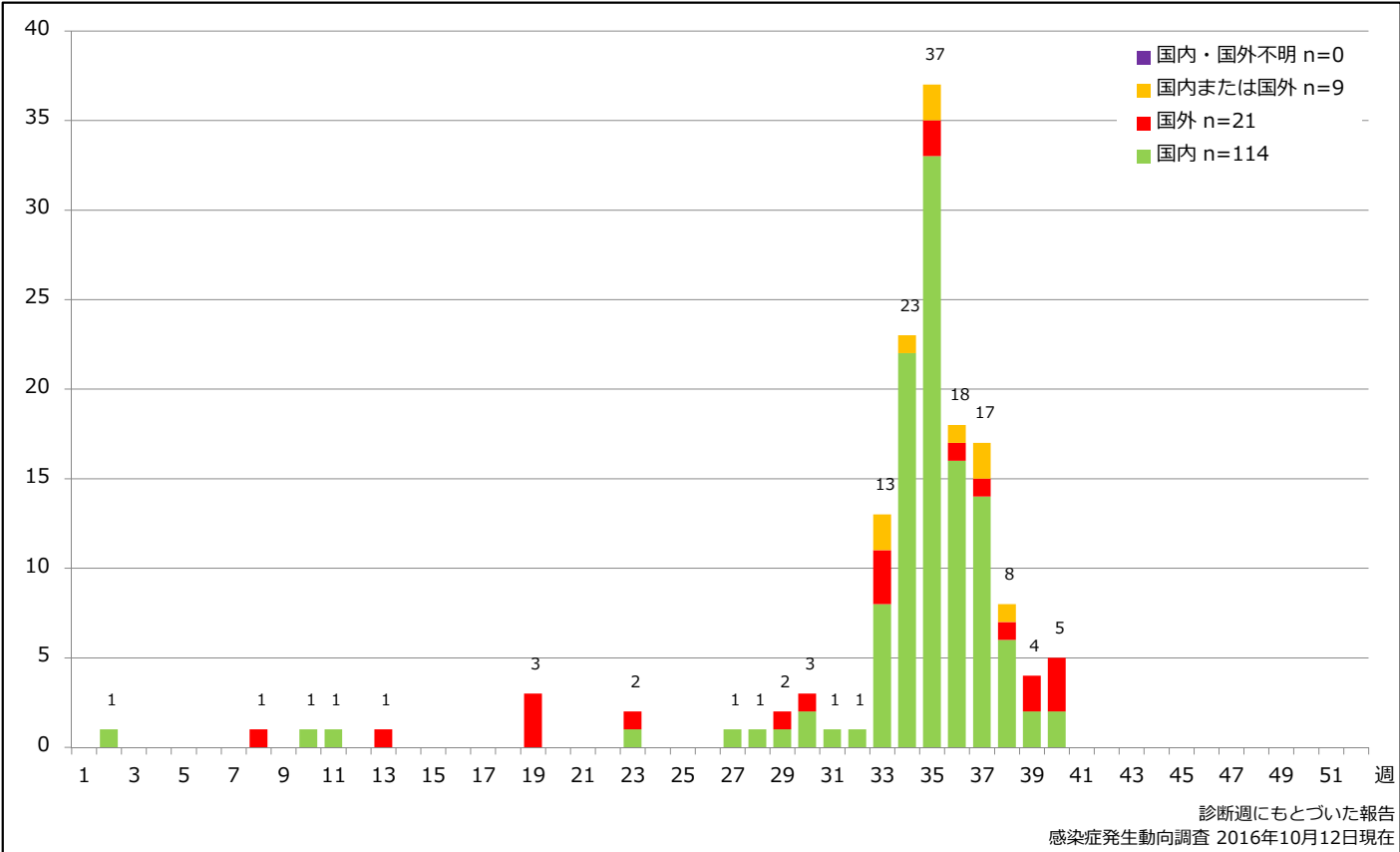
Percentage of cumulative measles cases by age group, week 1-40, 2016 (as of October 12, 2016)



8. 週別推定感染地域(国内・外)別麻疹報告数 2016年 第1~40週 (n=144)

Weekly measles cases by acquired region, week 1-40, 2016 (based on diagnosed week as of October 12, 2016)

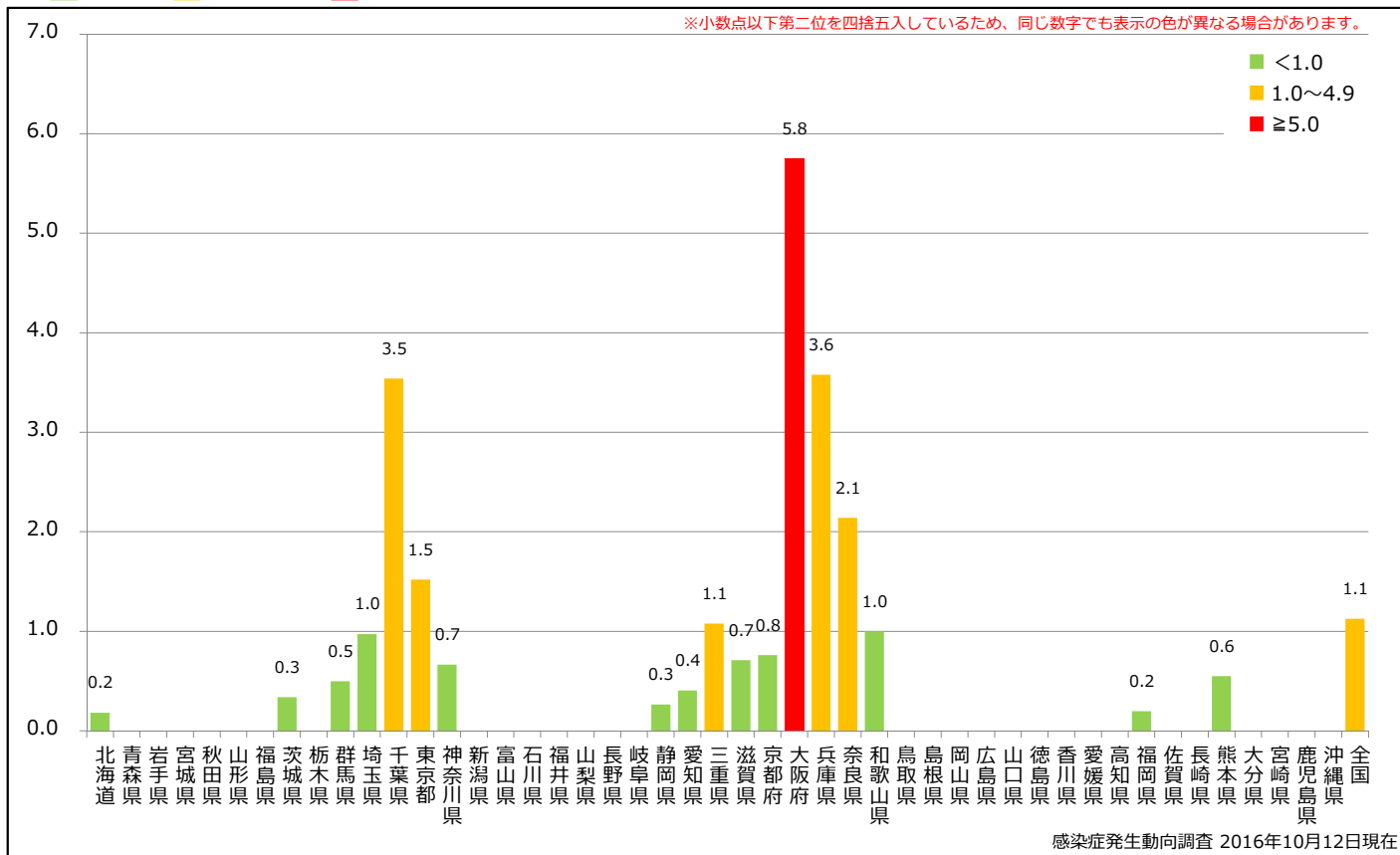
Domestic Imported Unspecified Unknown



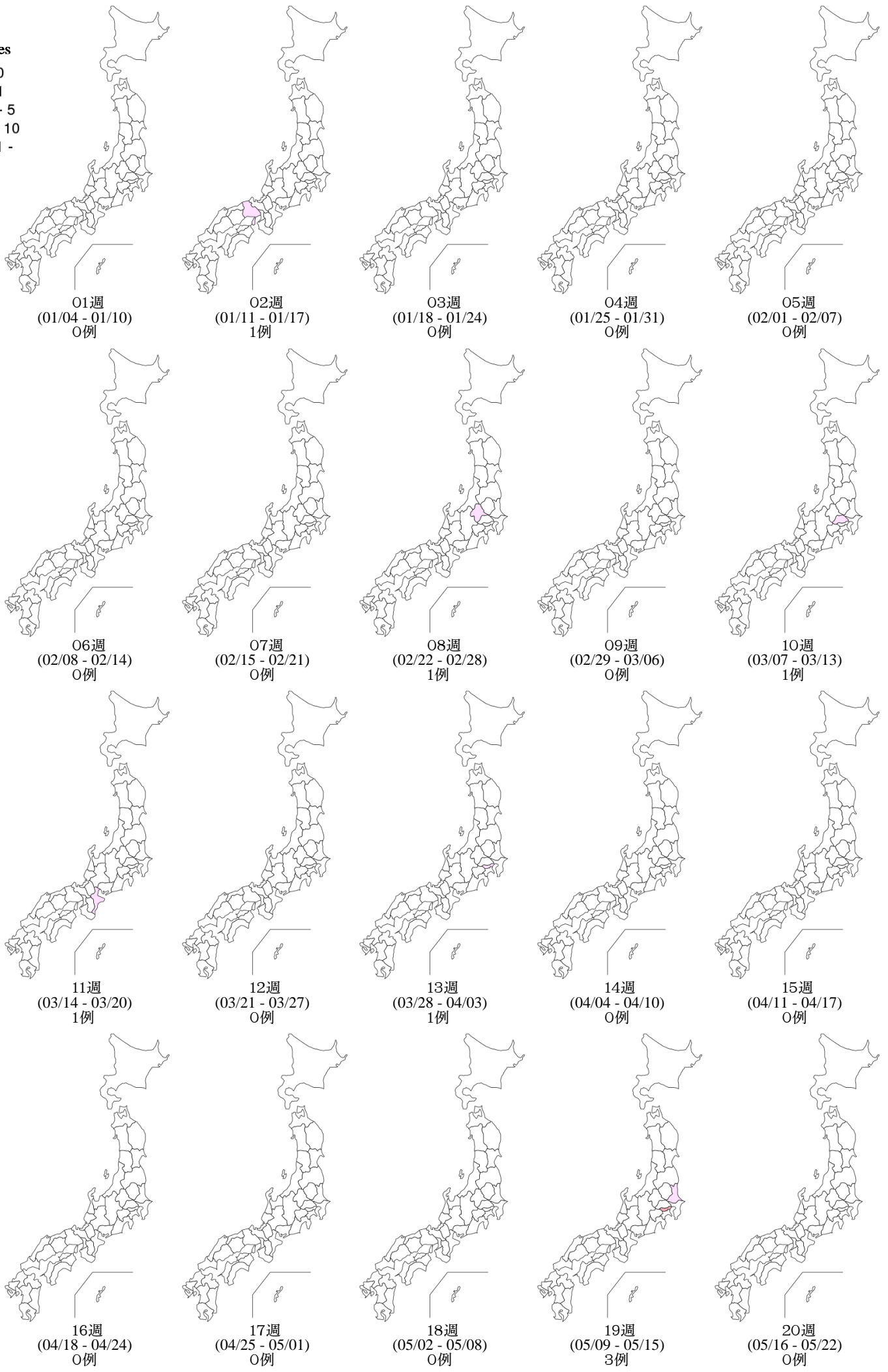
9. 都道府県別人口百万人あたり麻疹報告数 2016年 第1~40週 (n=144)

Reported measles cases per 1 million population by prefecture, week 1-40, 2016 (as of October 12, 2016)

■ <1.0 ■ 1.0~4.9 ■ ≥5.0



Weekly measles cases from week 01 to week 40, 2016 (based on diagnosed week as of October 12, 2016)



Weekly measles cases from week 01 to week 40, 2016 (based on diagnosed week as of October 12, 2016)

