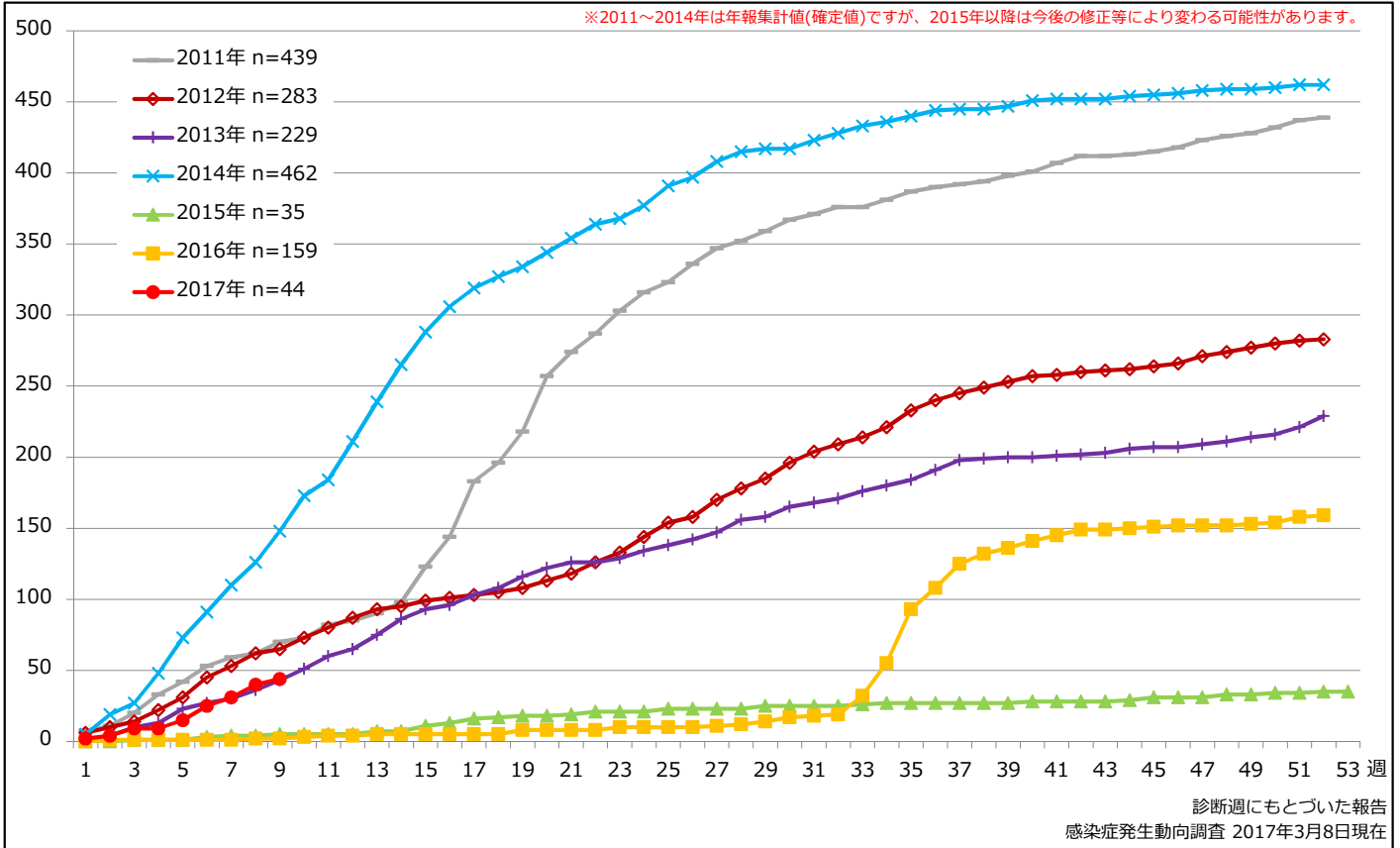


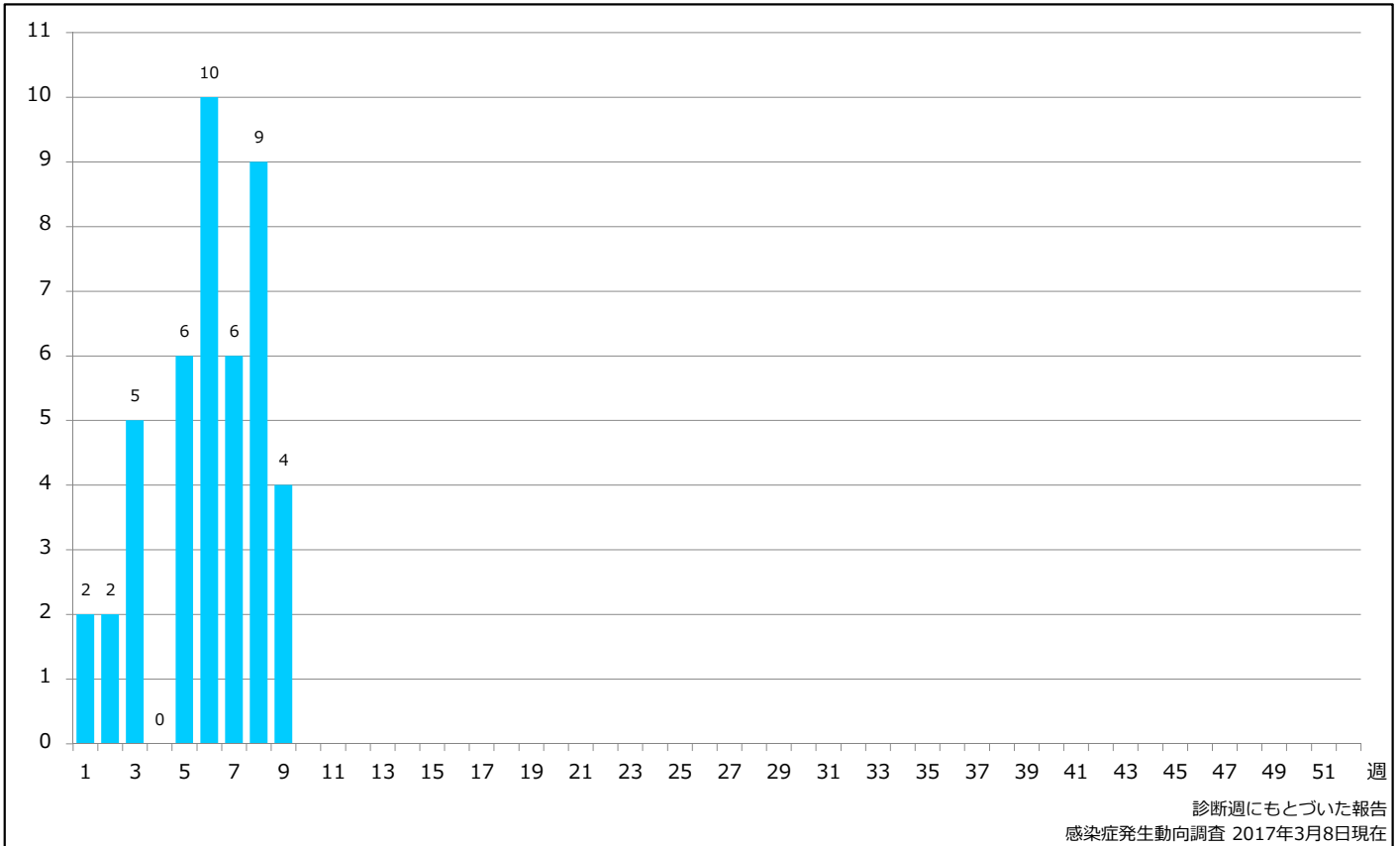
### 1. 麻疹累積報告数の推移 2011~2017年 (第1~9週)

Cumulative measles cases by week, 2011-2017 (week 1-9) (based on diagnosed week as of March 8, 2017)



### 2. 週別麻疹報告数 2017年 第1~9週 (n=44)

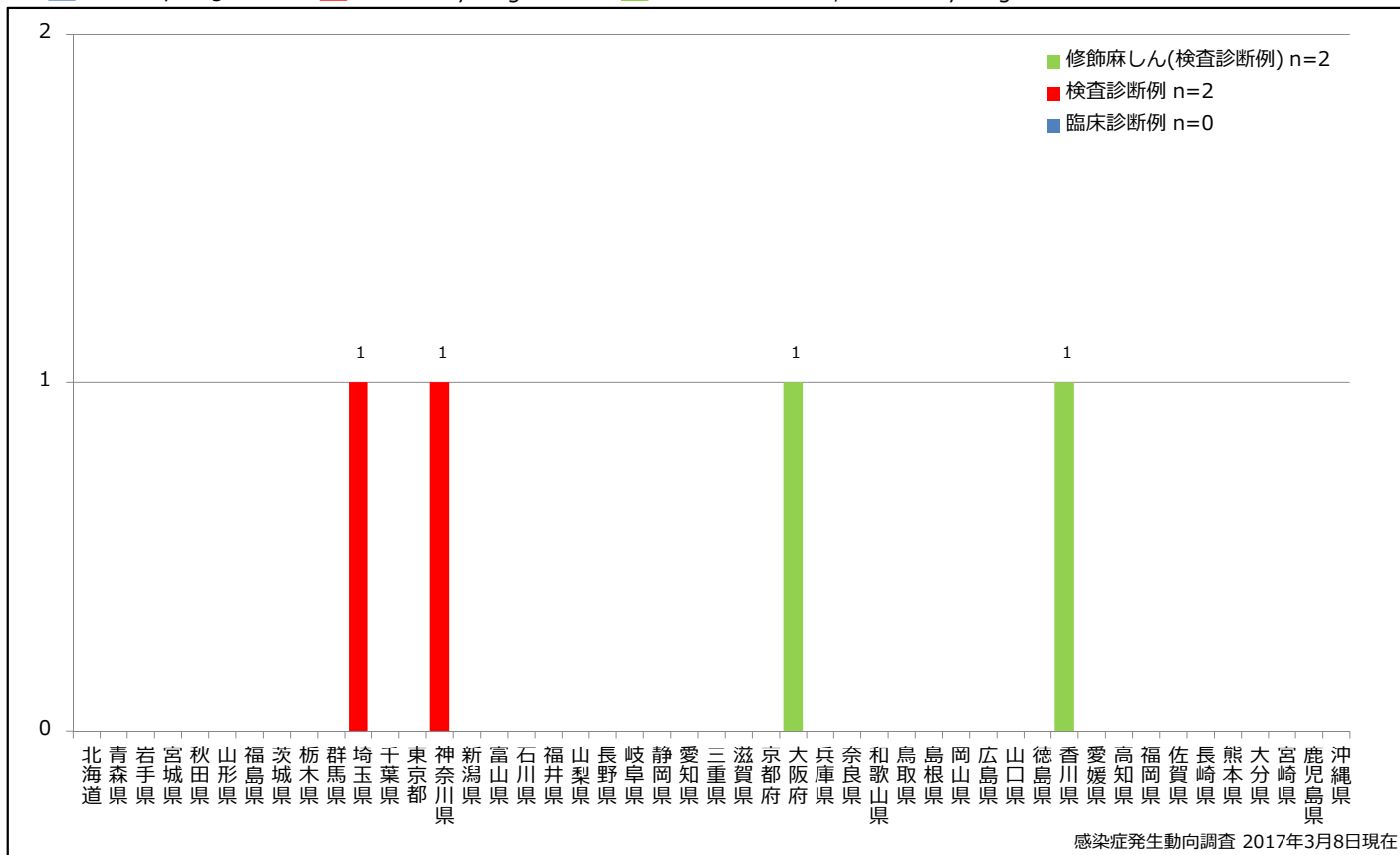
Weekly measles cases, week 1-9, 2017 (based on diagnosed week as of March 8, 2017)



### 3. 都道府県別病型別麻疹報告数 2017年 第9週 (n=4)

Reported measles cases by prefecture and methods of diagnosis in week 9, 2017 (as of March 8, 2017)

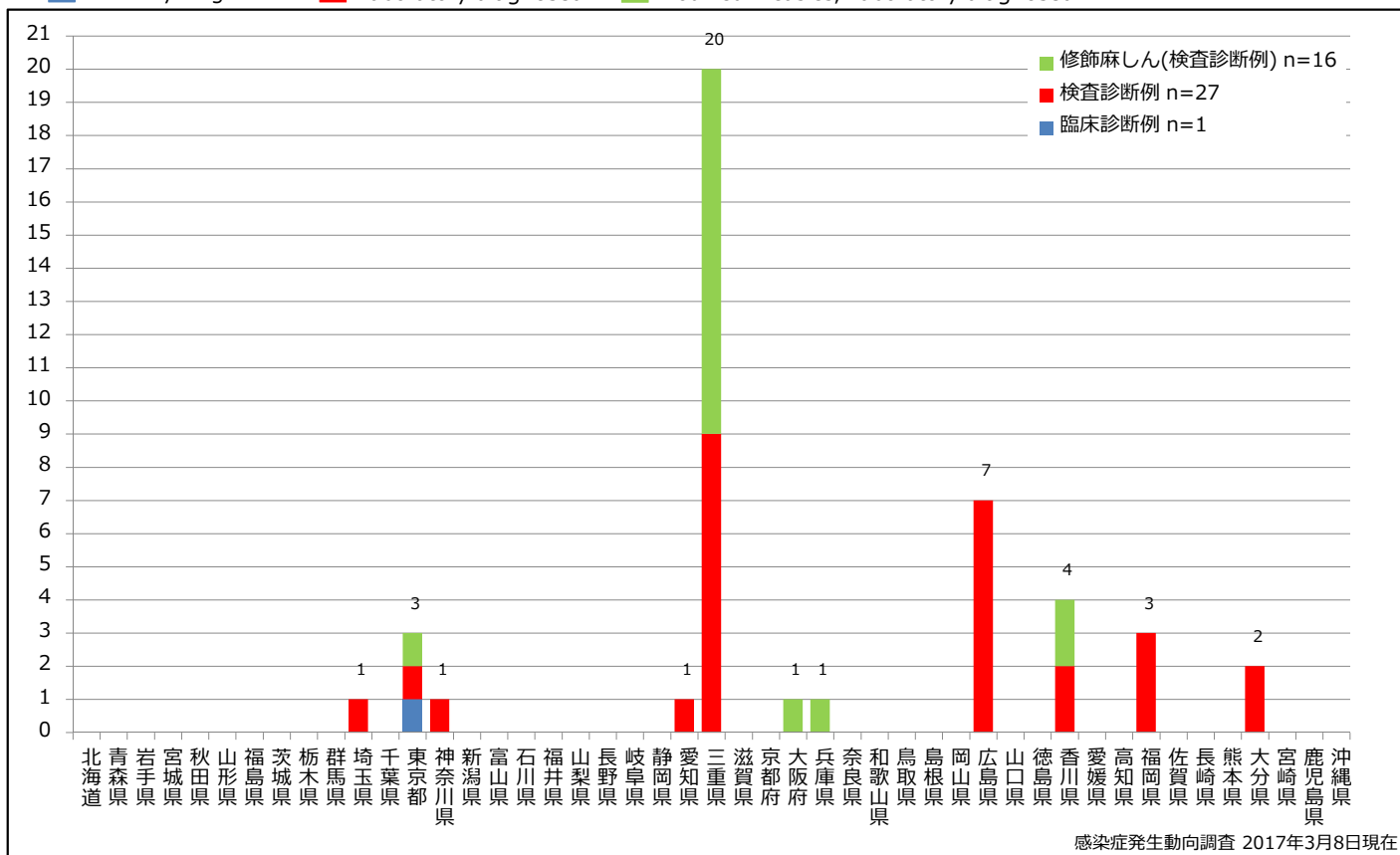
■ Clinically diagnosed   
 ■ Laboratory diagnosed   
 ■ Modified measles, Laboratory diagnosed



### 4. 都道府県別病型別麻疹累積報告数 2017年 第1~9週 (n=44)

Cumulative measles cases by prefecture and methods of diagnosis, week 1-9, 2017 (as of March 8, 2017)

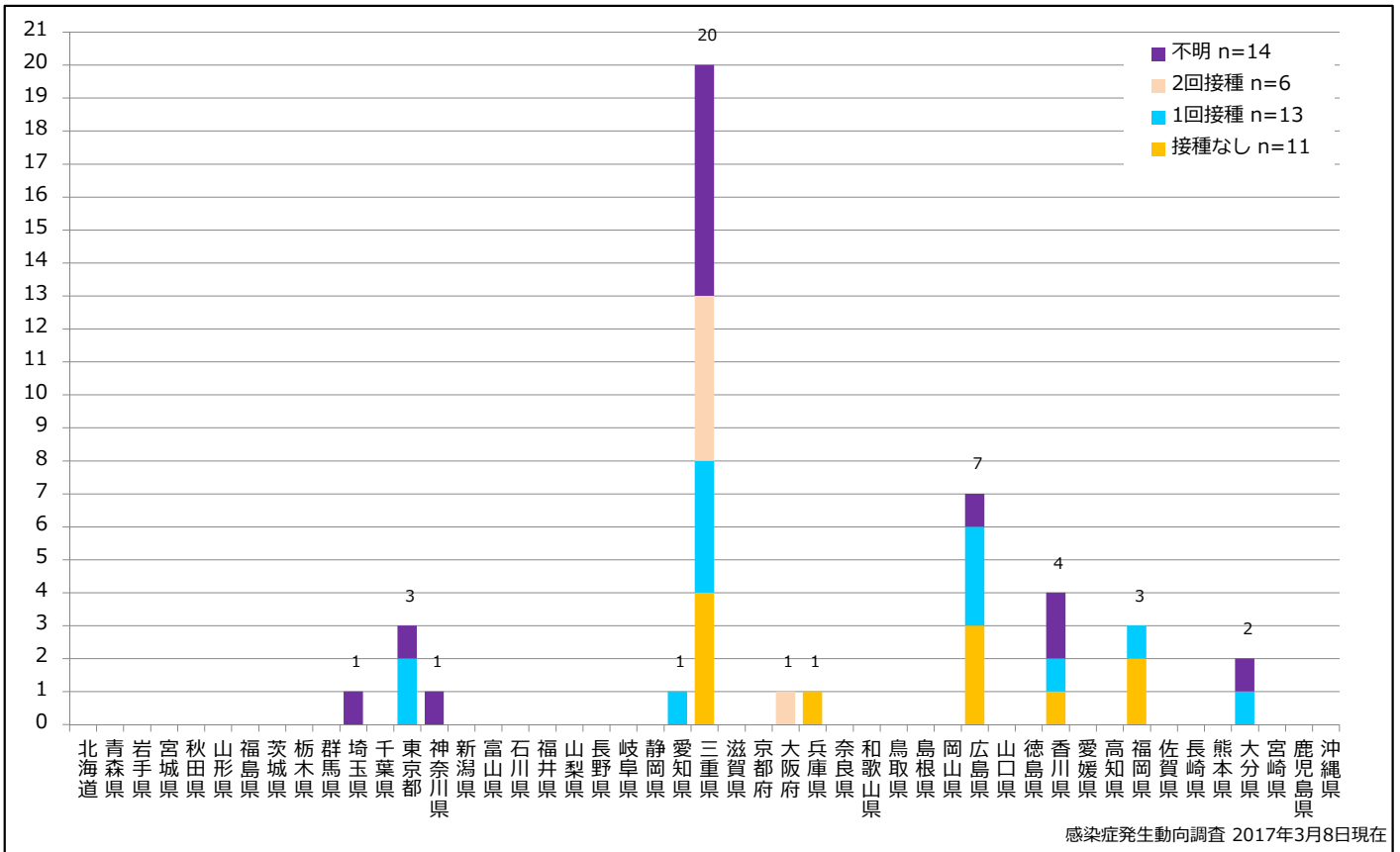
■ Clinically diagnosed   
 ■ Laboratory diagnosed   
 ■ Modified measles, Laboratory diagnosed



### 5. 都道府県別接種歴別麻疹累積報告数 2017年 第1~9週 (n=44)

Cumulative measles cases by prefecture and vaccinated status, week 1-9, 2017 (as of March 8, 2017)

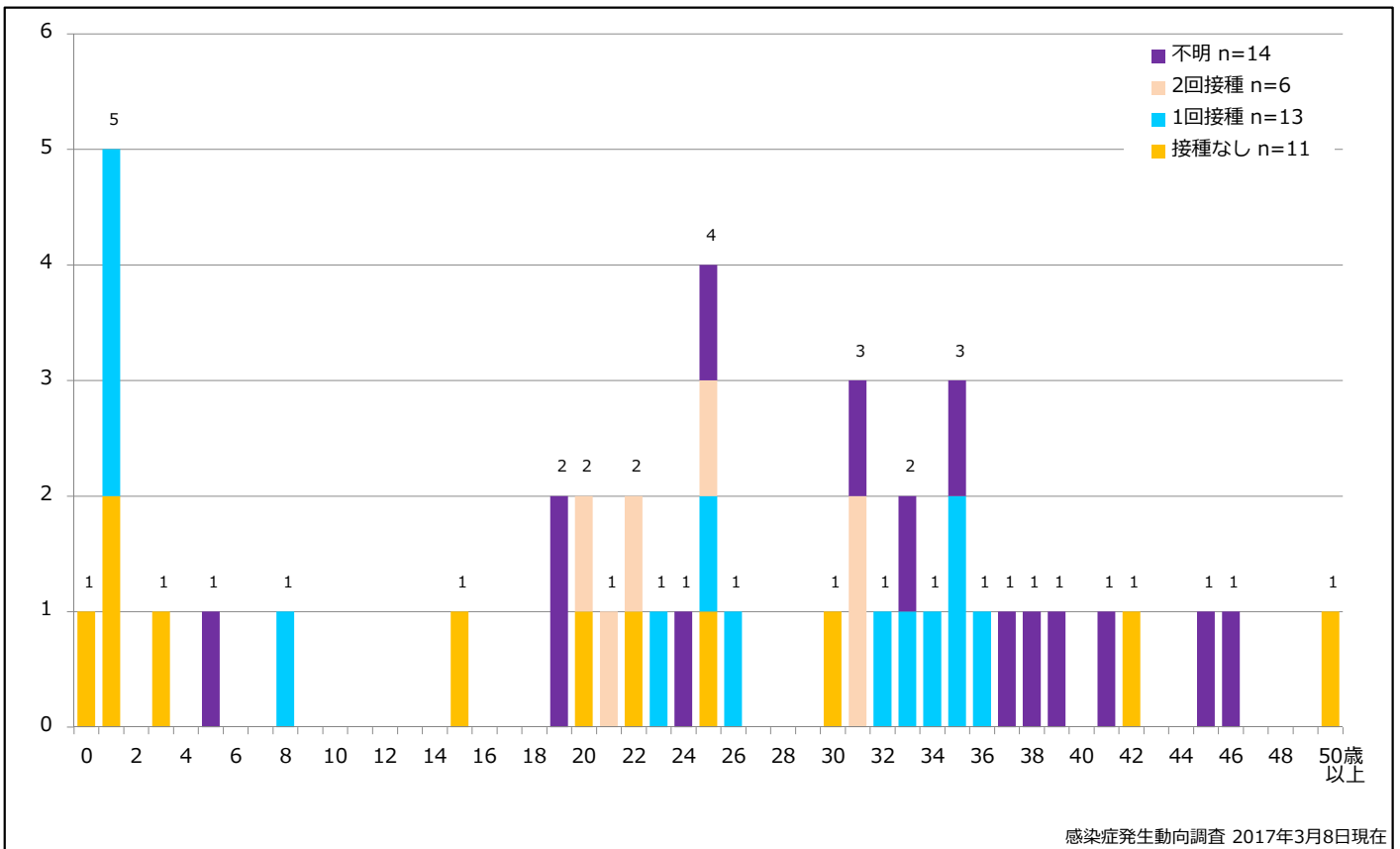
None MCV1 MCV2 Unknown



### 6. 年齢群別接種歴別麻疹累積報告数 2017年 第1~9週 (n=44)

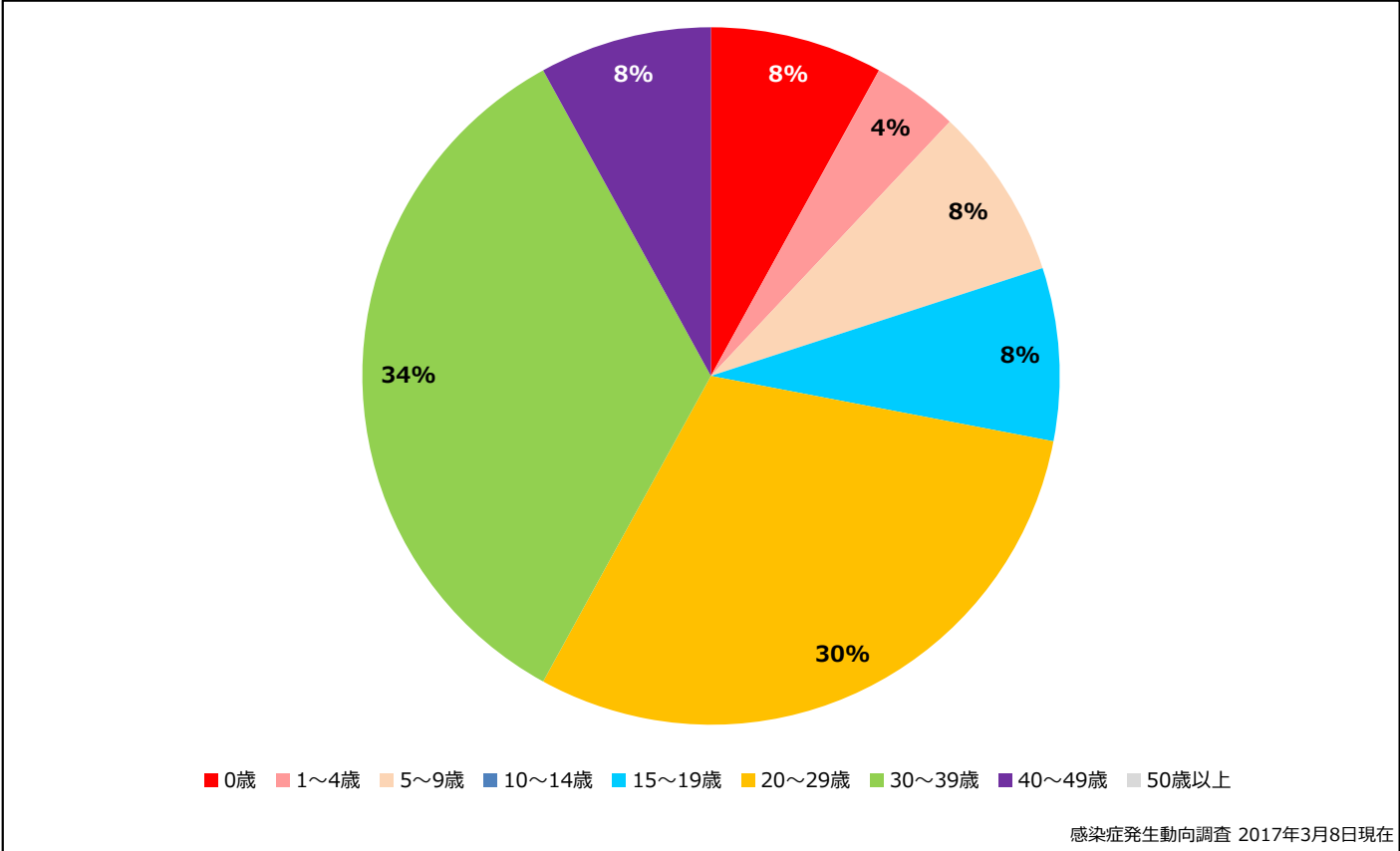
Cumulative measles cases by age and vaccinated status, week 1-9, 2017 (as of March 8, 2017)

None MCV1 MCV2 Unknown



7. 年齢群別麻疹累積報告数割合 2017年 第1~9週 (n=44)

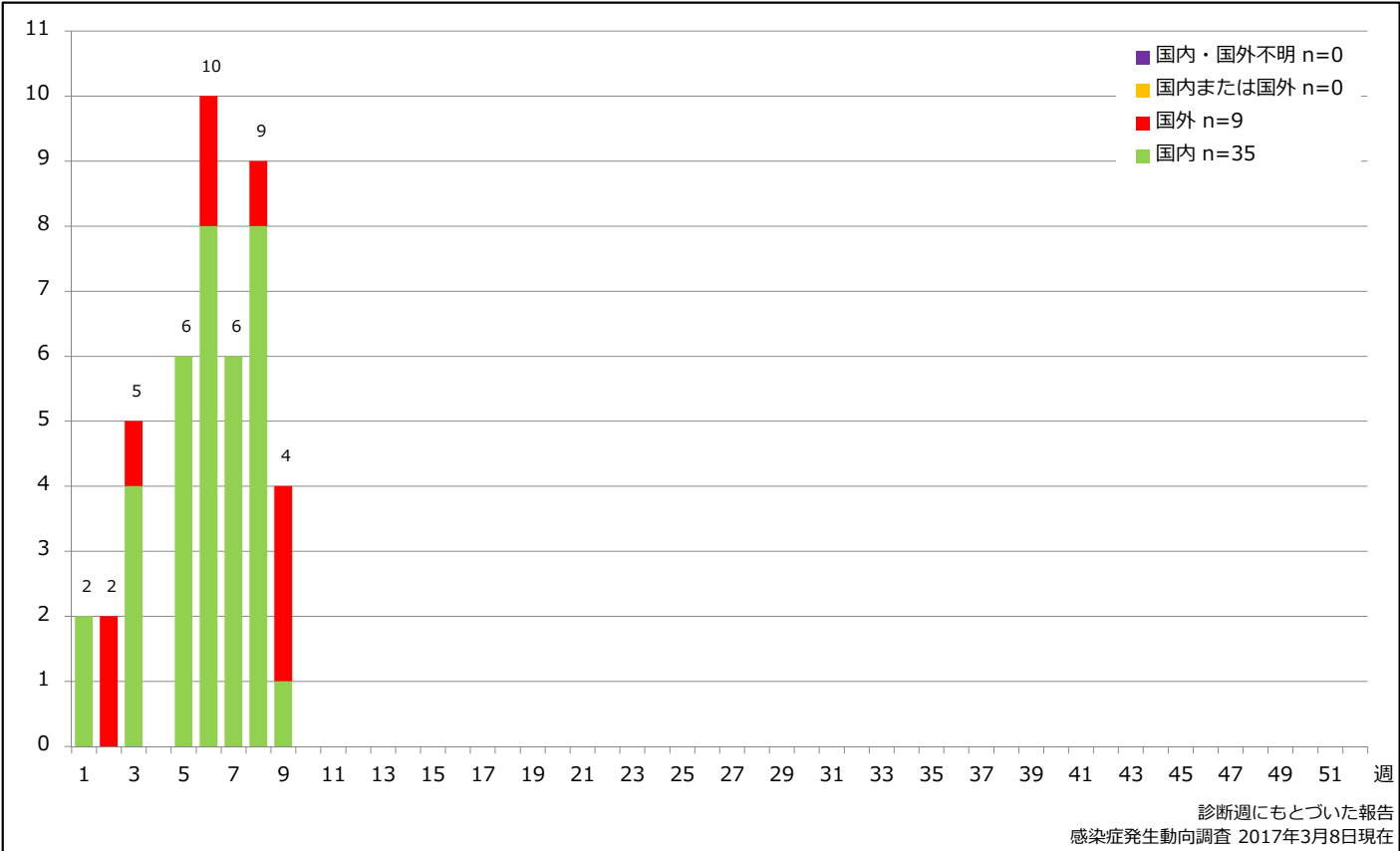
Percentage of cumulative measles cases by age group, week 1-9, 2017 (as of March 8, 2017)



8. 週別推定感染地域(国内・外)別麻疹報告数 2017年 第1~9週 (n=44)

Weekly measles cases by acquired region, week 1-9, 2017 (based on diagnosed week as of March 8, 2017)

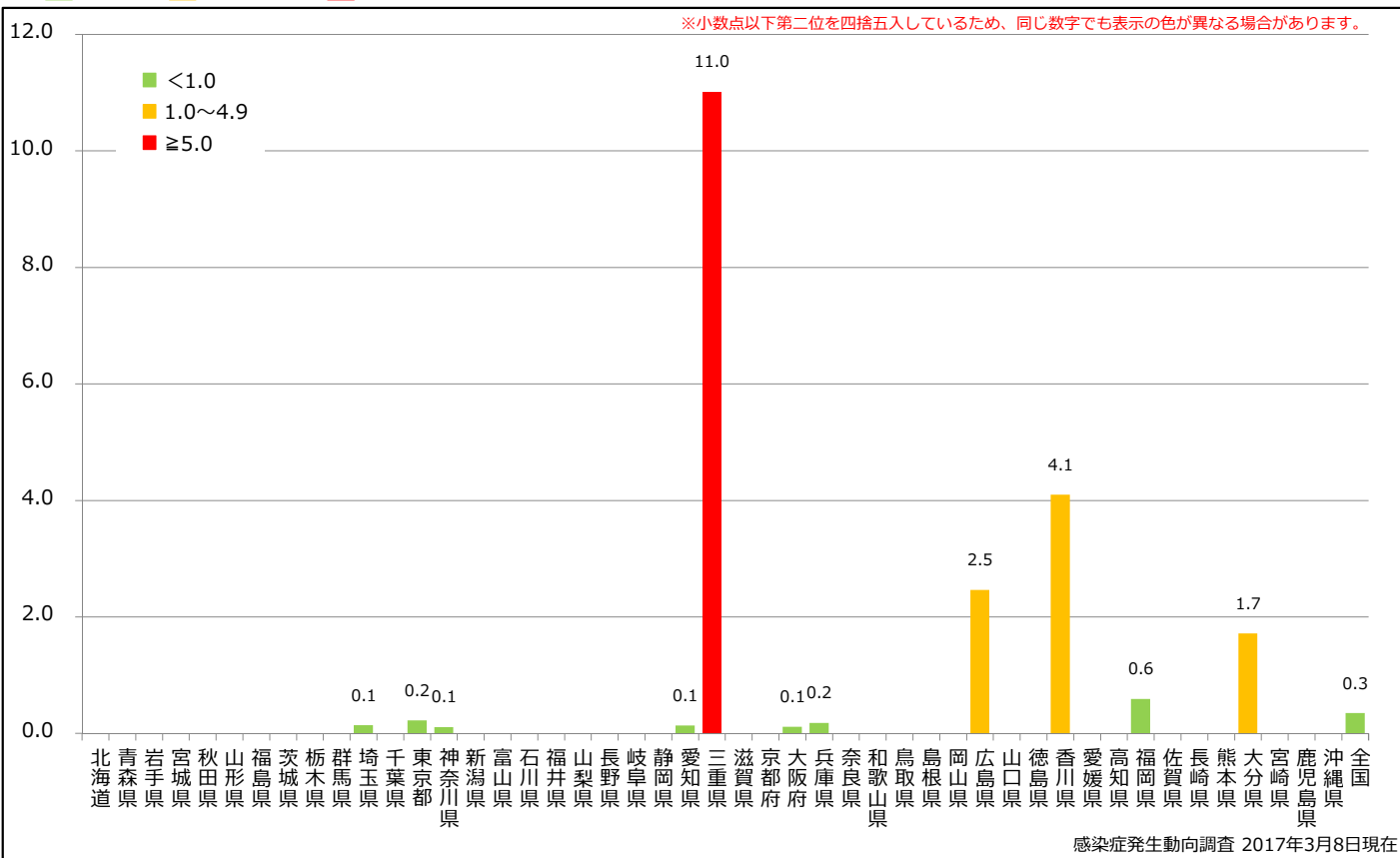
Domestic Imported Unspecified Unknown



### 9. 都道府県別人口百万人あたり麻疹報告数 2017年 第1~9週 (n=44)

Reported measles cases per 1 million population by prefecture, week 1-9, 2017 (as of March 8, 2017)

■ <1.0 ■ 1.0~4.9 ■ ≥5.0



10. 都道府県別麻疹週別報告状況 2017年 第1~09週 感染症発生動向調査

2017年03月08日現在

Weekly measles cases from week 01 to week 09, 2017 (based on diagnosed week as of March 08, 2017)

報告数  
No. of cases

