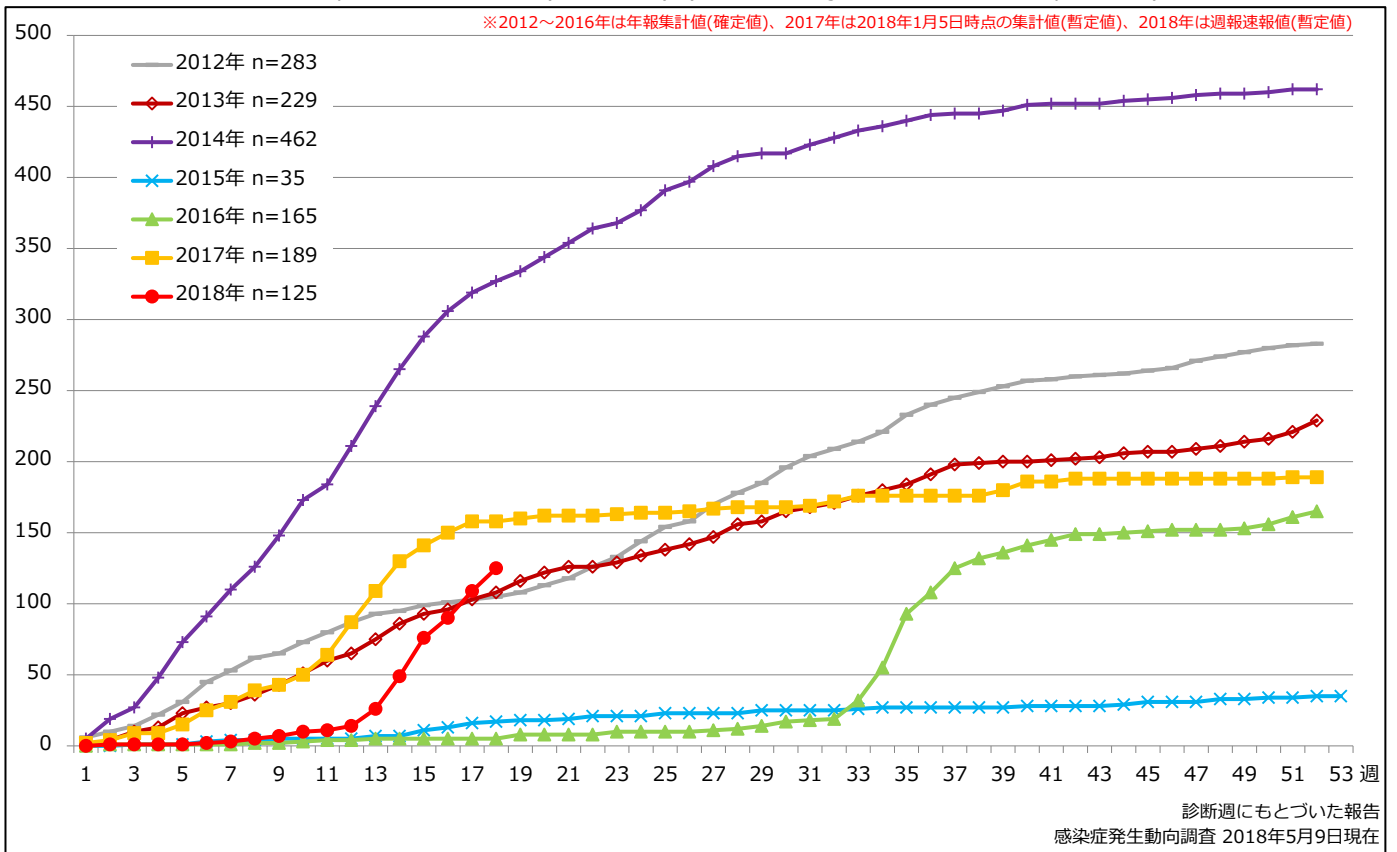


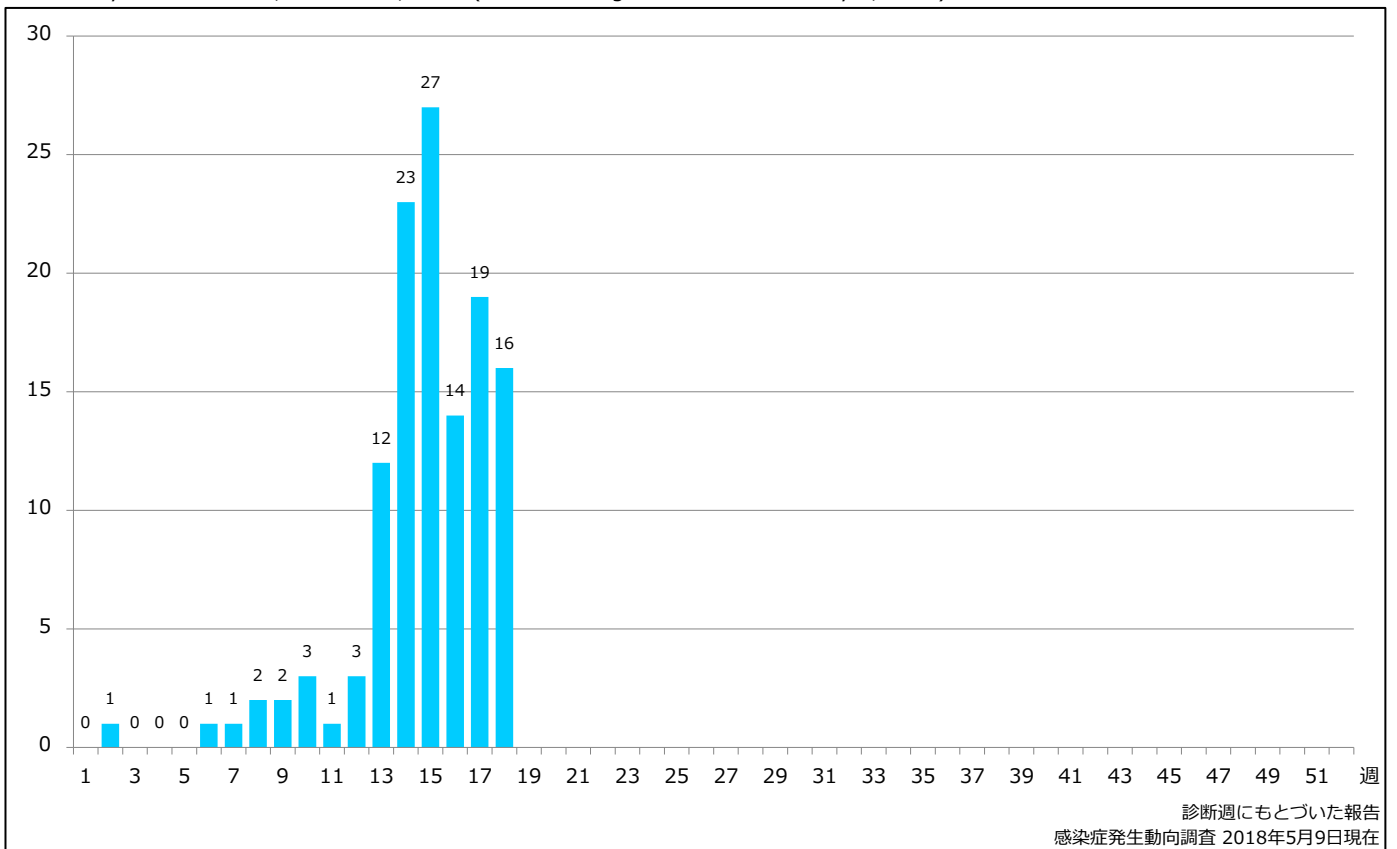
## 1. 麻疹累積報告数の推移 2012～2018年 (第1～18週)

Cumulative measles cases by week, 2012-2018 (week 1-18) (based on diagnosed week as of May 9, 2018)



## 2. 週別麻疹報告数 2018年 第1～18週 (n=125)

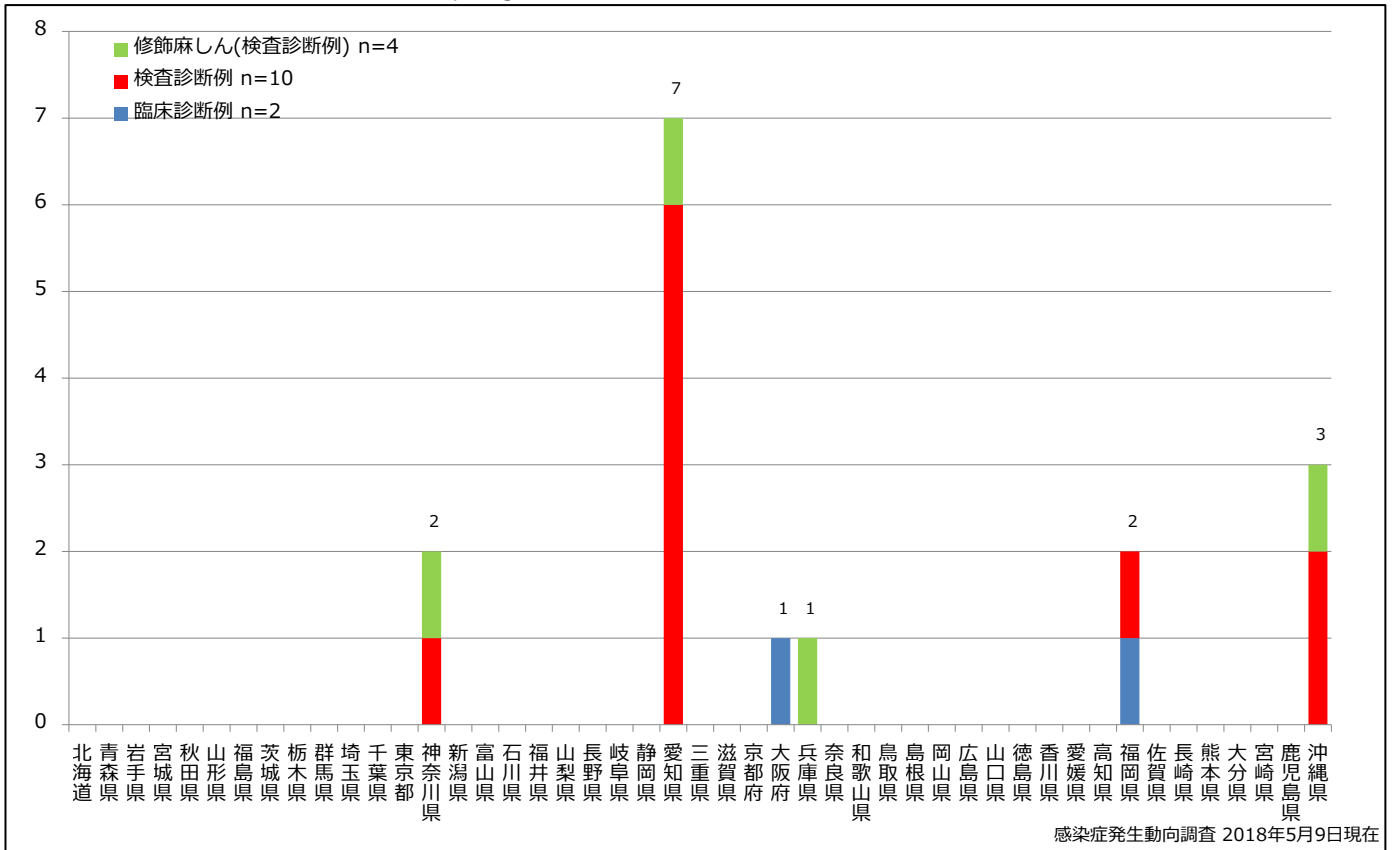
Weekly measles cases, week 1-18, 2018 (based on diagnosed week as of May 9, 2018)



### 3. 都道府県別病型別麻疹報告数 2018年 第18週 (n=16)

Reported measles cases by prefecture and methods of diagnosis in week 18, 2018 (as of May 9, 2018)

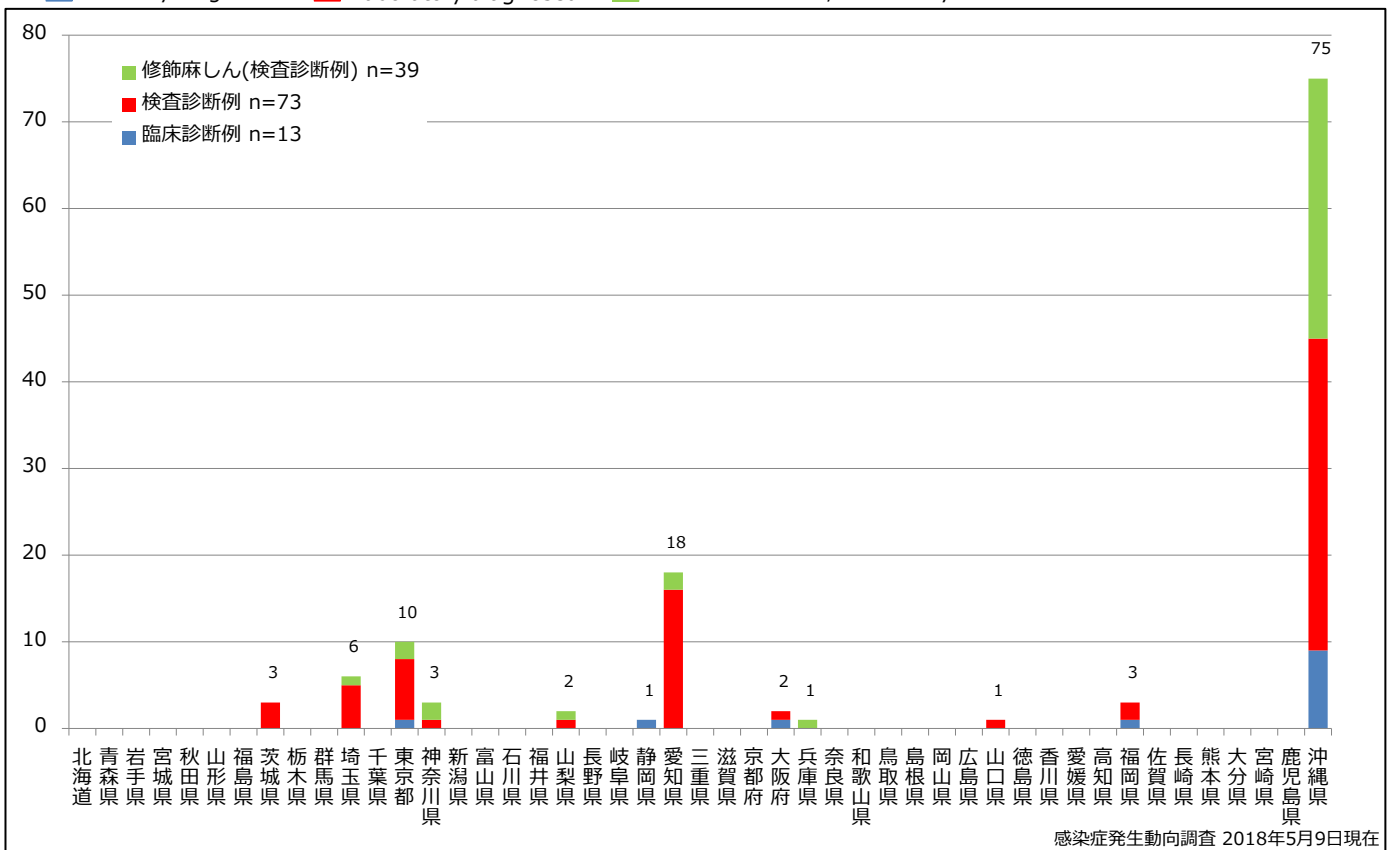
■ Clinically diagnosed   
 ■ Laboratory diagnosed   
 ■ Modified measles, Laboratory



### 4. 都道府県別病型別麻疹累積報告数 2018年 第1~18週 (n=125)

Cumulative measles cases by prefecture and methods of diagnosis, week 1-18, 2018 (as of May 9, 2018)

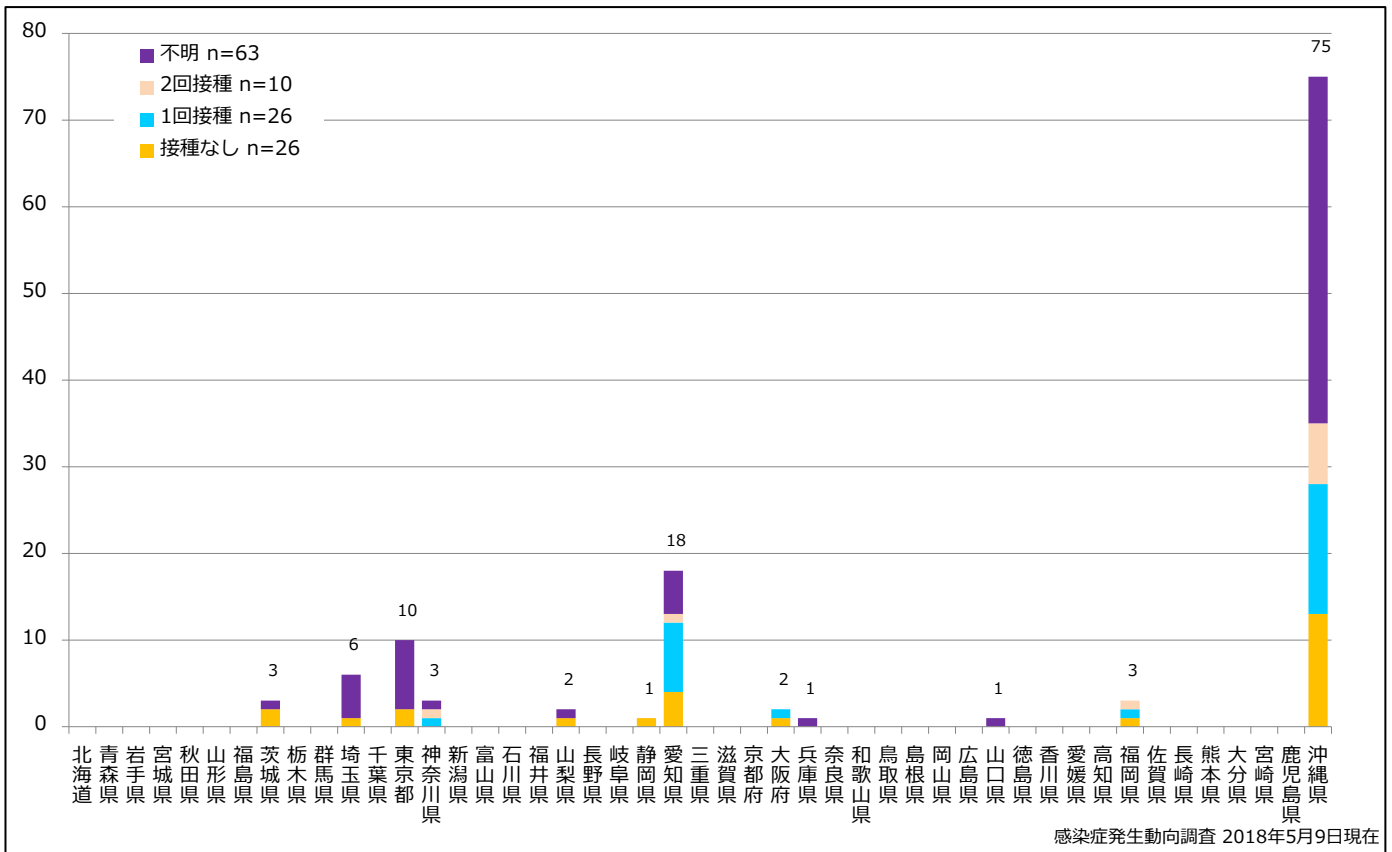
■ Clinically diagnosed   
 ■ Laboratory diagnosed   
 ■ Modified measles, Laboratory



### 5. 都道府県別接種歴別麻疹累積報告数 2018年 第1~18週 (n=125)

Cumulative measles cases by prefecture and vaccinated status, week 1-18, 2018 (as of May 9, 2018)

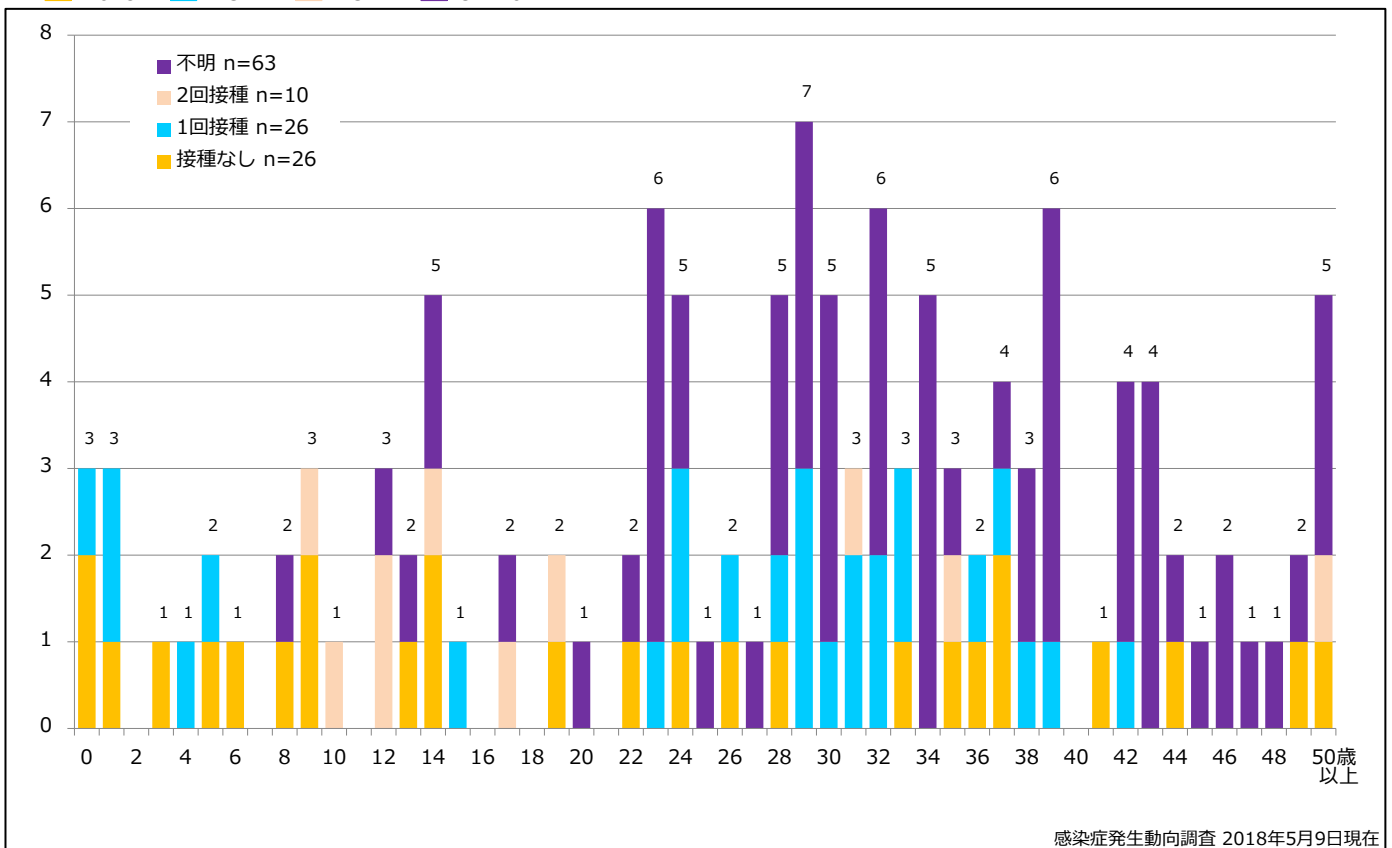
None MCV1 MCV2 Unknown



### 6. 年齢群別接種歴別麻疹累積報告数 2018年 第1~18週 (n=125)

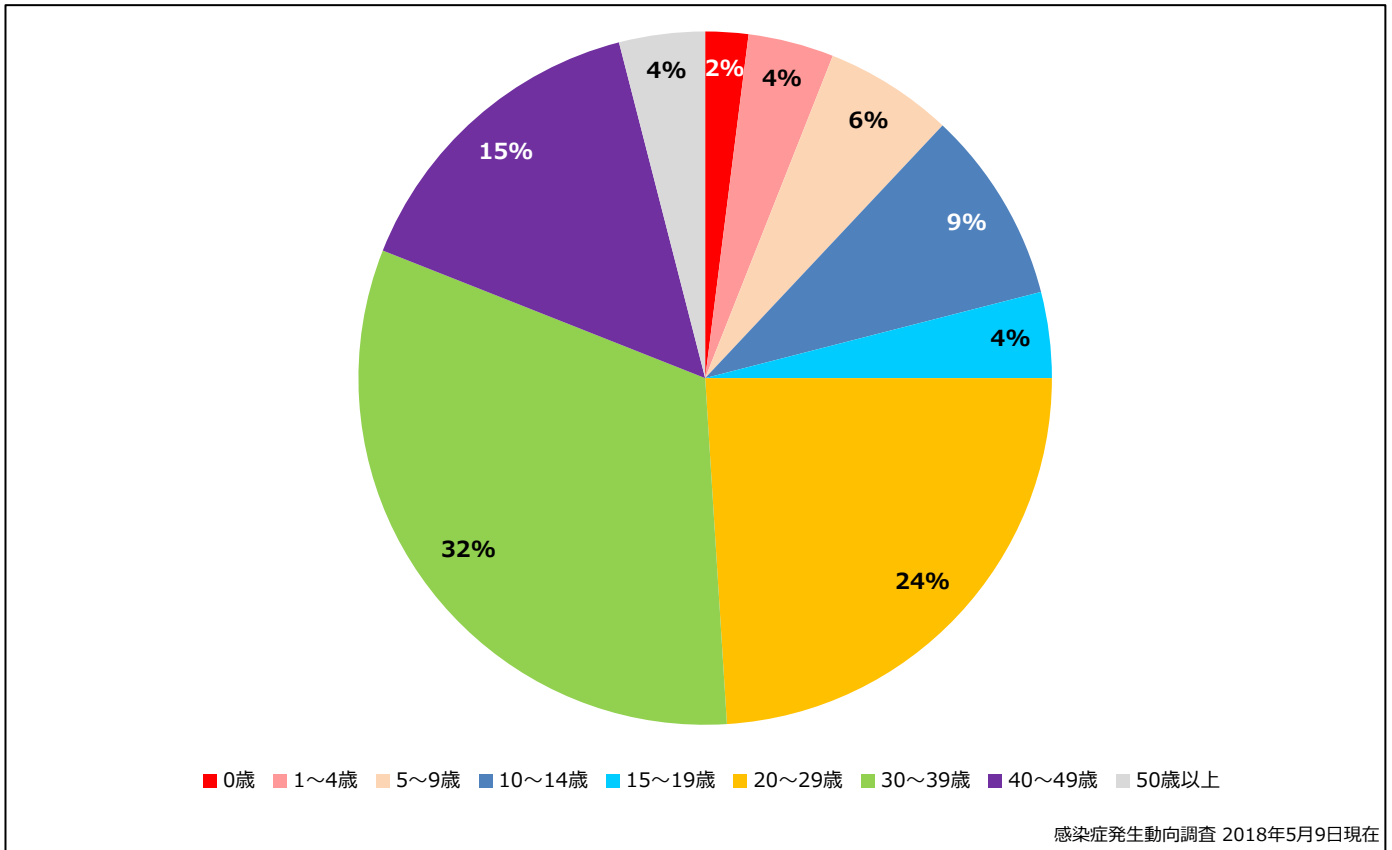
Cumulative measles cases by age and vaccinated status, week 1-18, 2018 (as of May 9, 2018)

None MCV1 MCV2 Unknown



### 7. 年齢群別麻疹累積報告数割合 2018年 第1~18週 (n=125)

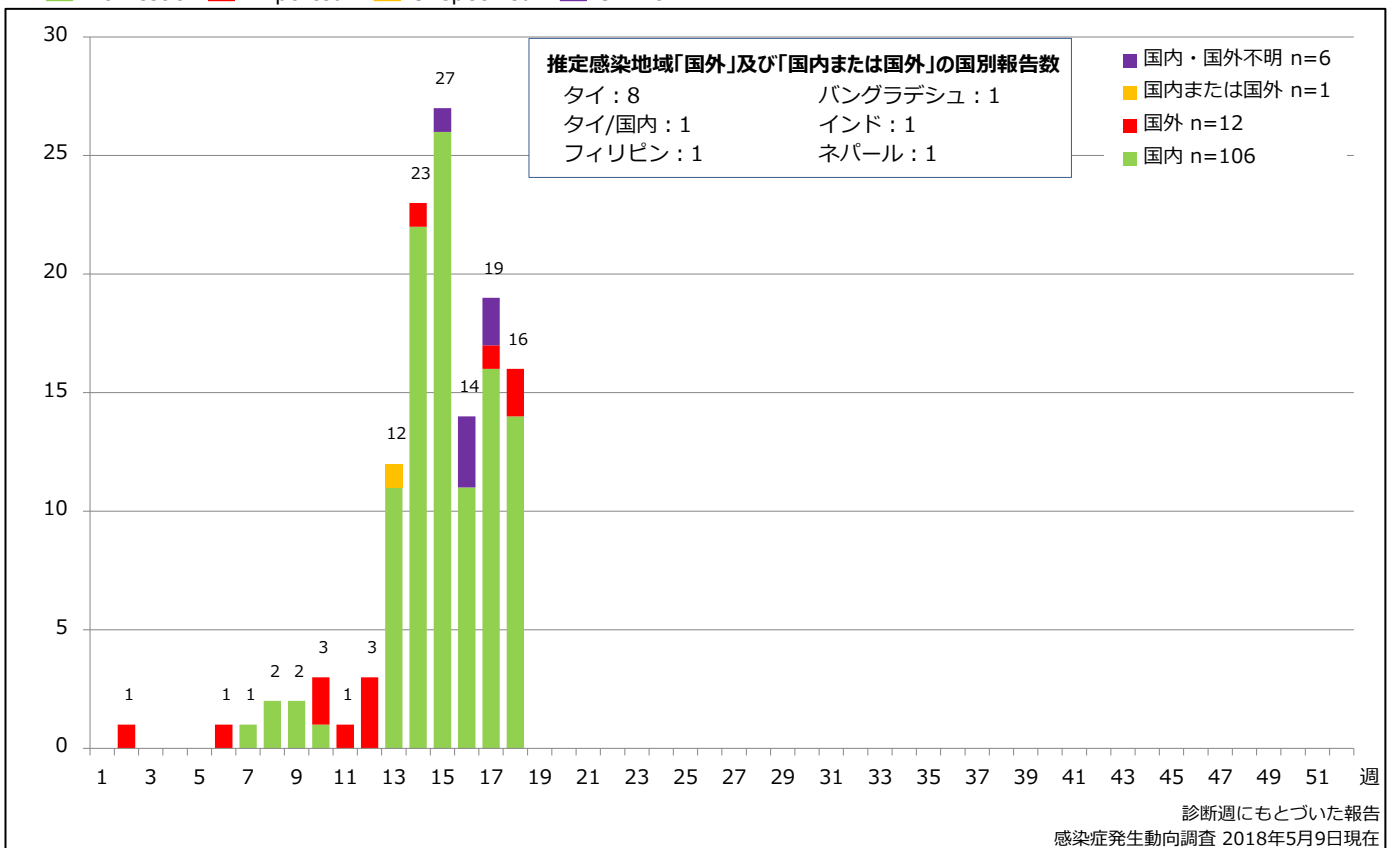
Percentage of cumulative measles cases by age group, week 1-18, 2018 (as of May 9, 2018)



### 8. 週別推定感染地域(国内・外)別麻疹報告数 2018年 第1~18週 (n=125)

Weekly measles cases by acquired region, week 1-18, 2018 (based on diagnosed week as of May 9, 2018)

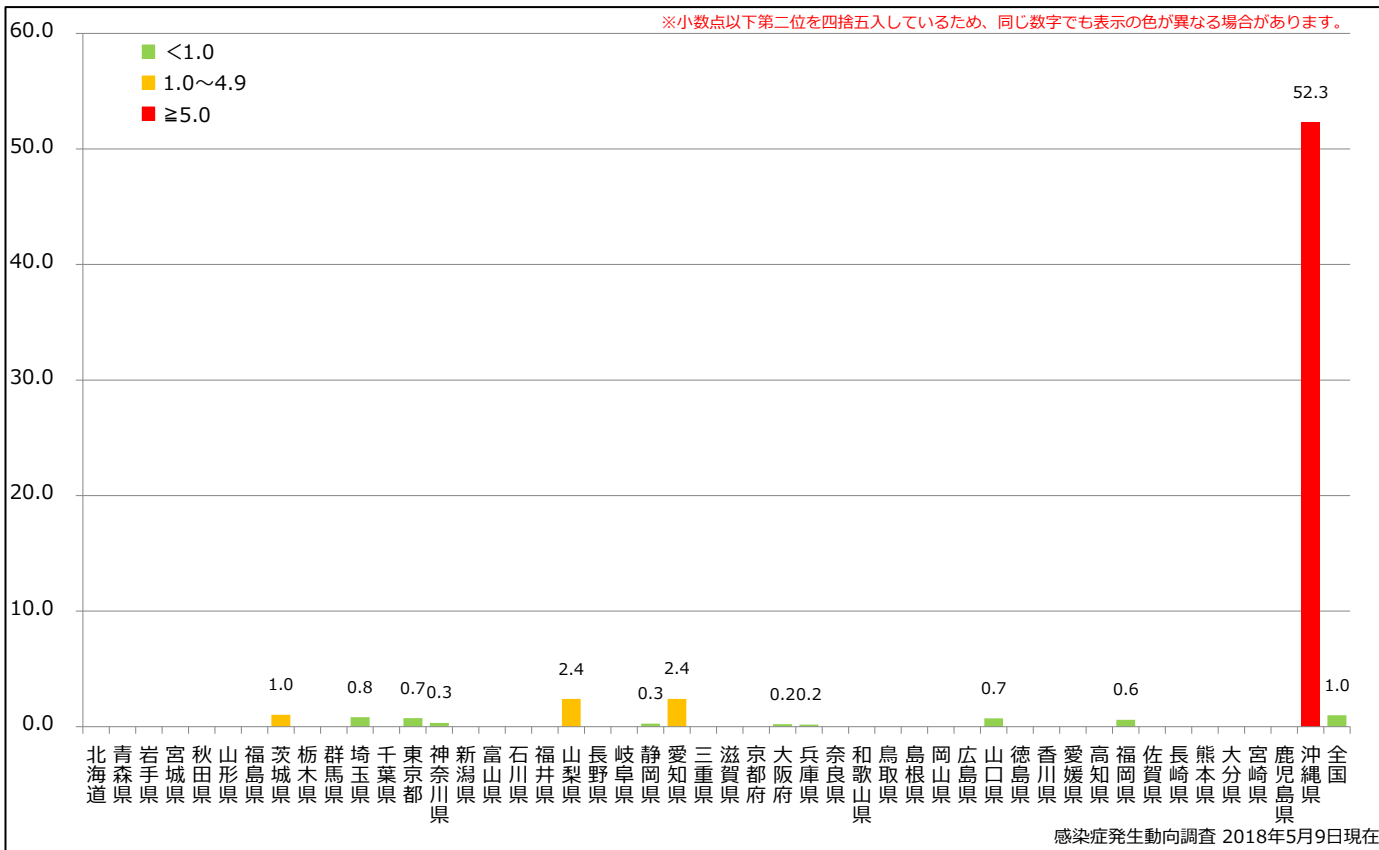
Domestic Imported Unspecified Unknown



### 9. 都道府県別人口百万人あたり麻疹報告数 2018年 第1~18週 (n=125)

Reported measles cases per 1 million population by prefecture, week 1-18, 2018 (as of May 9, 2018)

■ <1.0 ■ 1.0~4.9 ■ ≥5.0



10. 都道府県別麻疹週別報告状況 2018年 第1~18週 感染症発生動向調査  
 Weekly measles cases from week 01 to week 18, 2018 (based on diagnosed week as of May 09, 2018)

2018年05月09日現在

