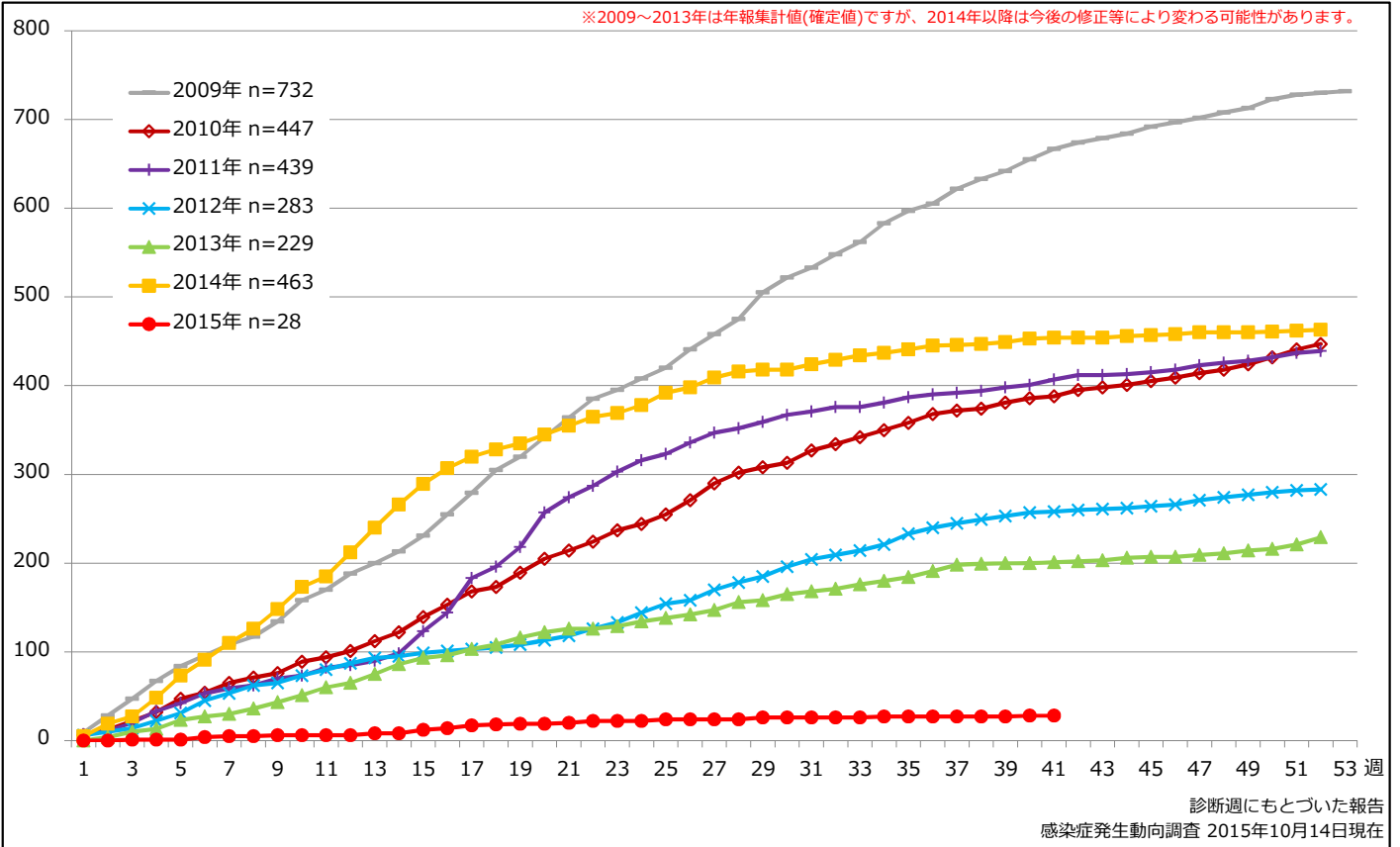


### 1. 麻疹累積報告数の推移 2009~2015年 (第1~41週)

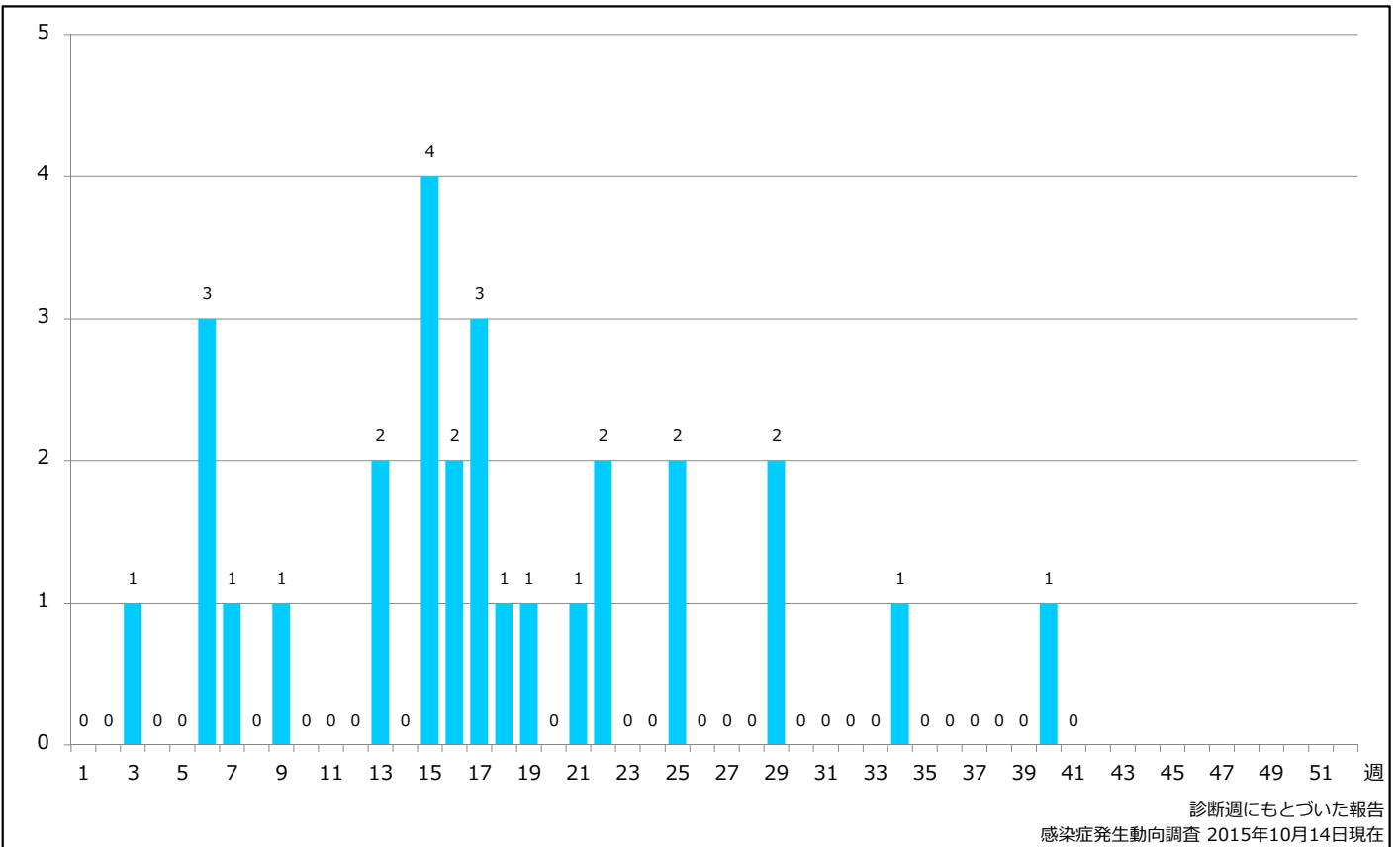
Cumulative measles cases by week, 2009-2015 (week 1-41) (based on diagnosed week as of October 14, 2015)

※2009~2013年は年報集計値(確定値)ですが、2014年以降は今後の修正等により変わる可能性があります。



### 2. 週別麻疹報告数 2015年 第1~41週 (n=28)

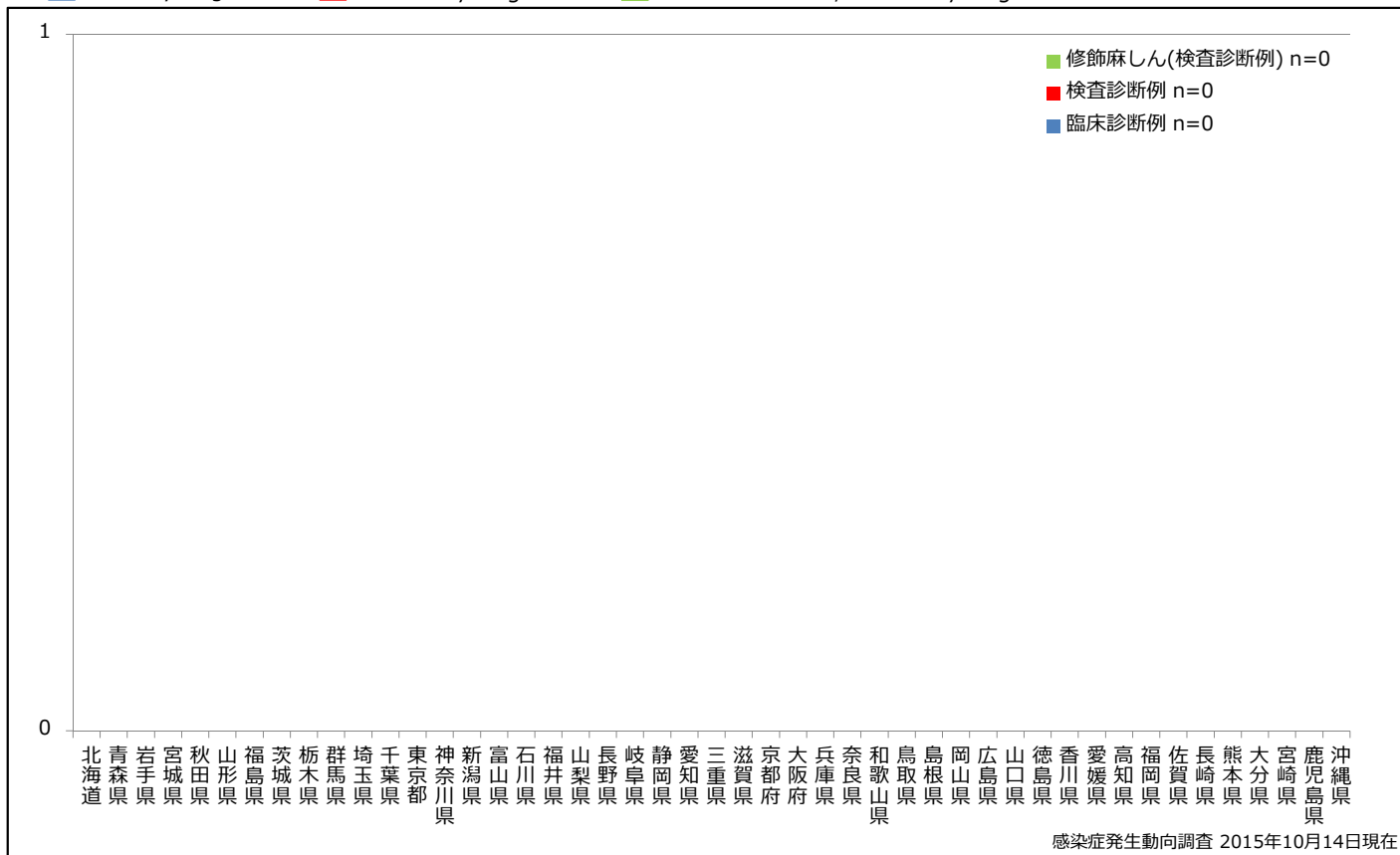
Weekly measles cases, week 1-41, 2015 (based on diagnosed week as of October 14, 2015)



### 3. 都道府県別病型別麻疹報告数 2015年 第41週 (n=0)

Reported measles cases by prefecture and methods of diagnosis in week 41, 2015 (as of October 14, 2015)

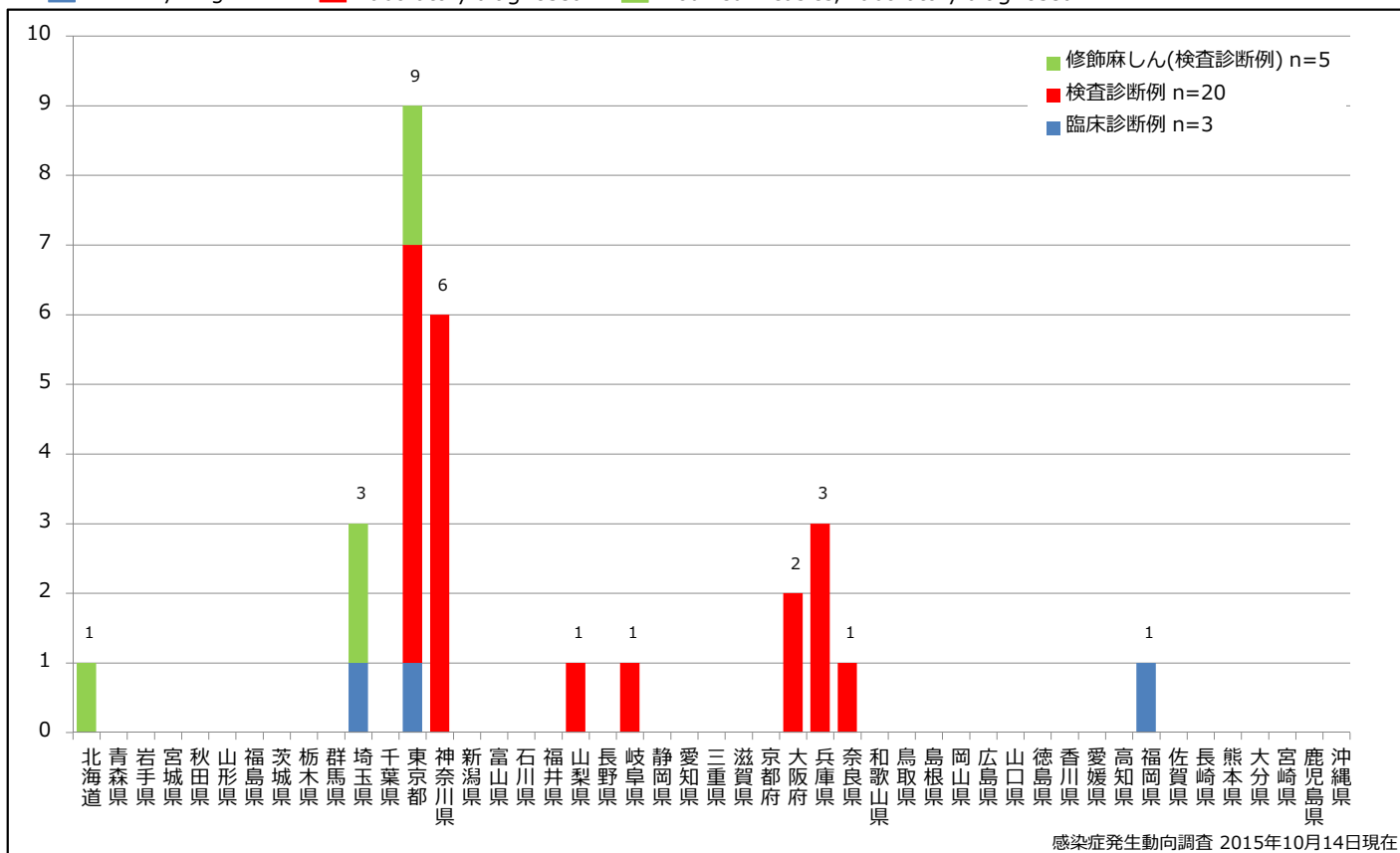
■ Clinically diagnosed   
 ■ Laboratory diagnosed   
 ■ Modified measles, Laboratory diagnosed



### 4. 都道府県別病型別麻疹累積報告数 2015年 第1~41週 (n=28)

Cumulative measles cases by prefecture and methods of diagnosis, week 1-41, 2015 (as of October 14, 2015)

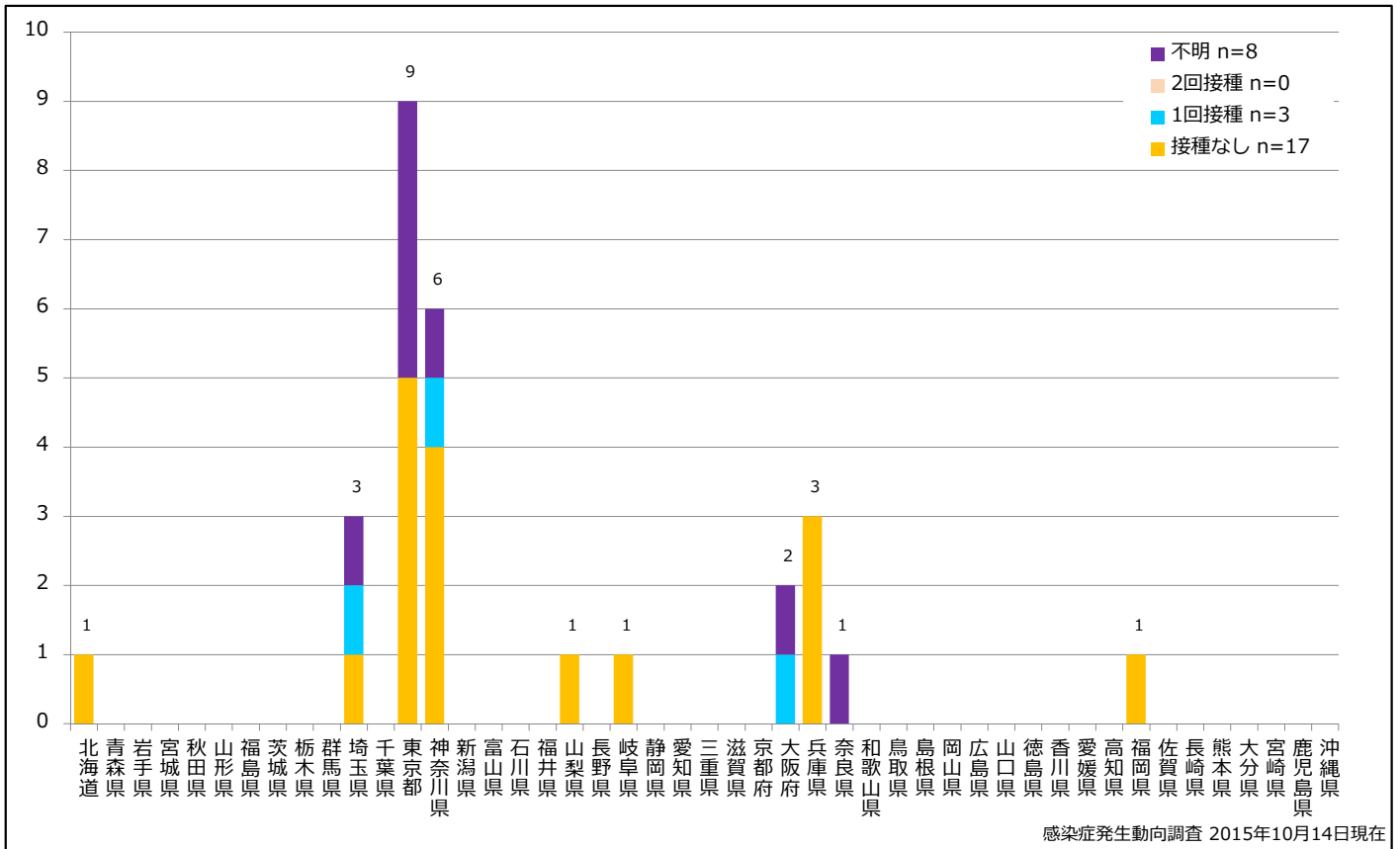
■ Clinically diagnosed   
 ■ Laboratory diagnosed   
 ■ Modified measles, Laboratory diagnosed



### 5. 都道府県別接種歴別麻疹累積報告数 2015年 第1~41週 (n=28)

Cumulative measles cases by prefecture and vaccinated status, week 1-41, 2015 (as of October 14, 2015)

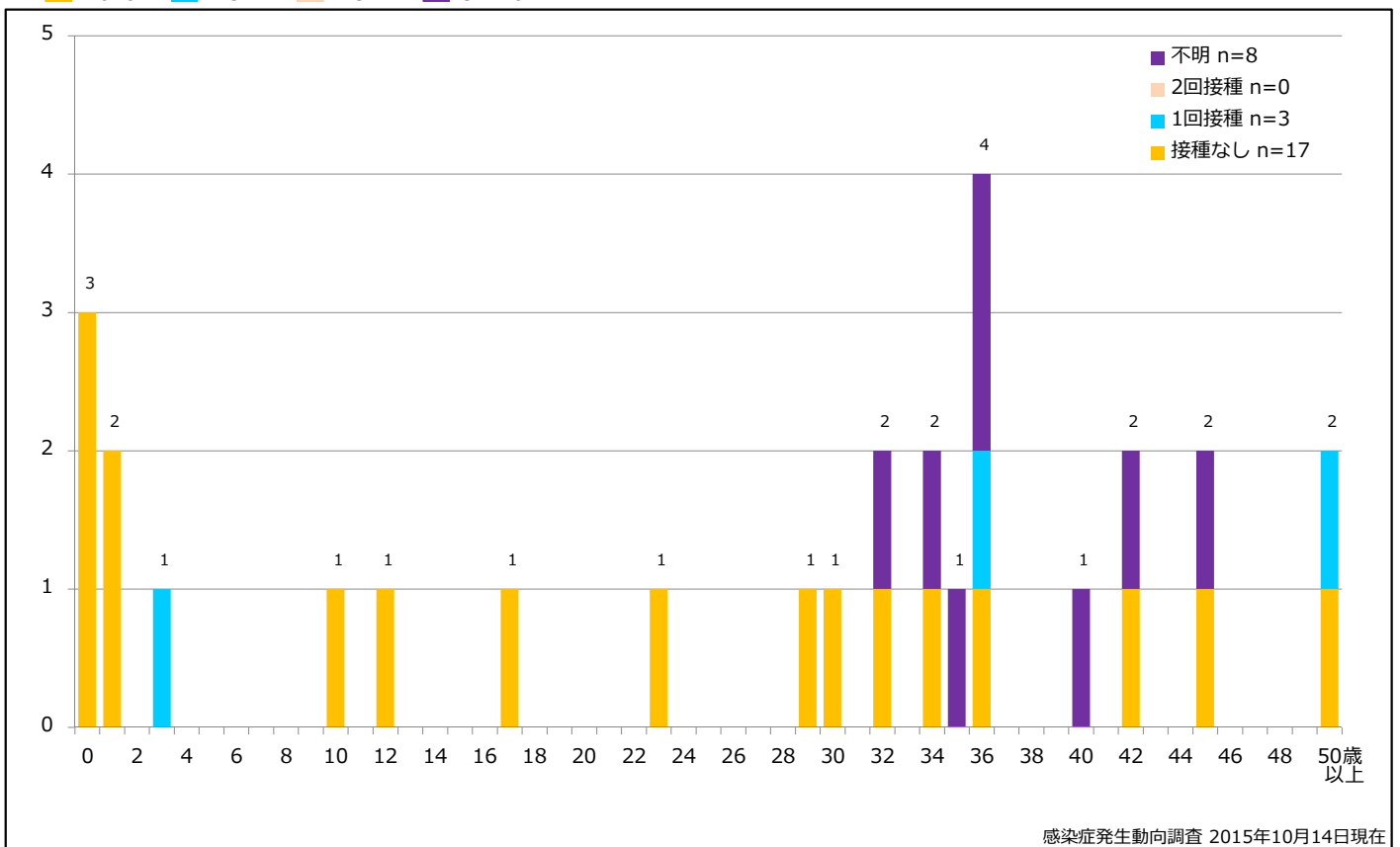
None MCV1 MCV2 Unknown



### 6. 年齢群別接種歴別麻疹累積報告数 2015年 第1~41週 (n=28)

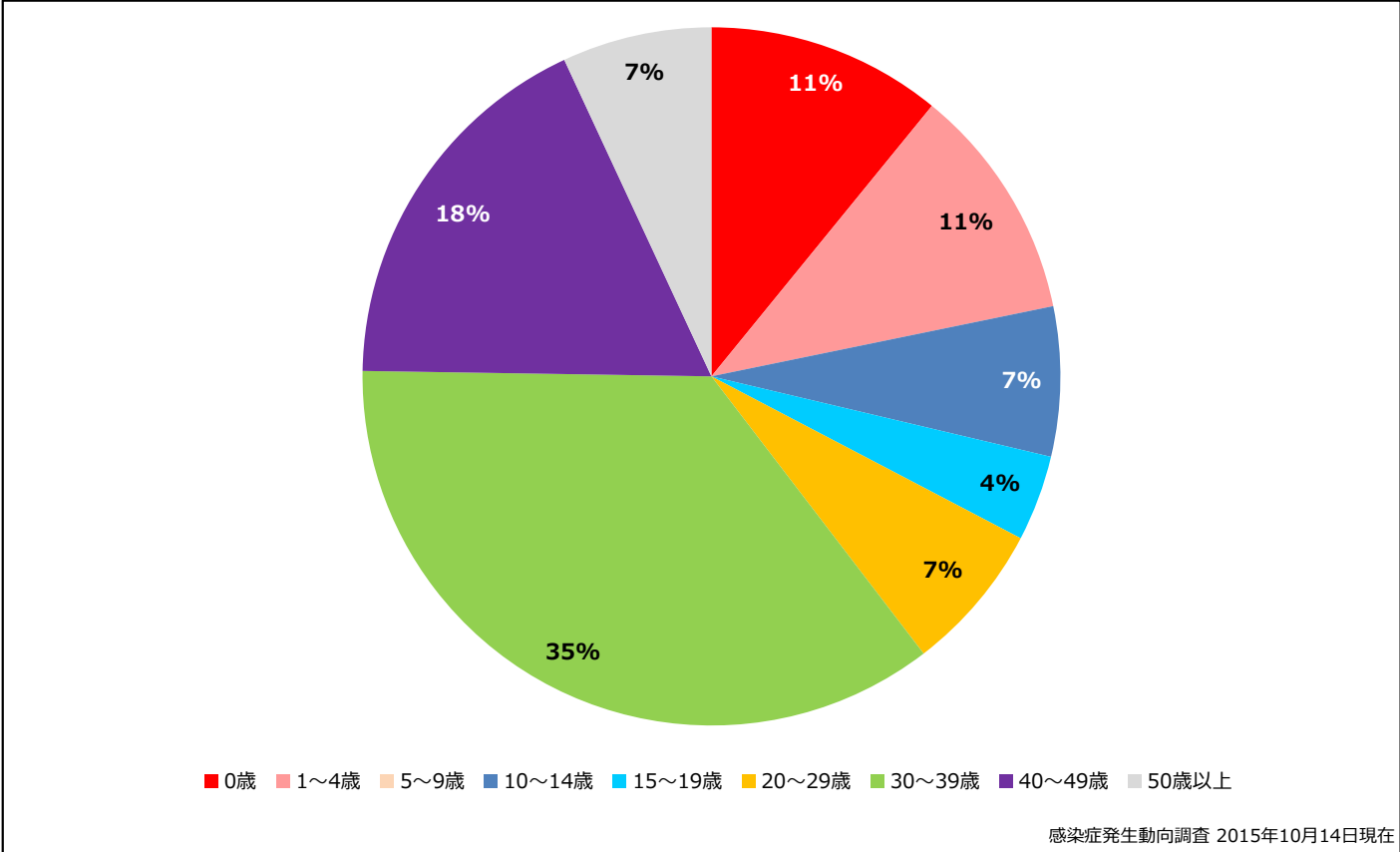
Cumulative measles cases by age and vaccinated status, week 1-41, 2015 (as of October 14, 2015)

None MCV1 MCV2 Unknown



7. 年齢群別麻疹累積報告数割合 2015年 第1~41週 (n=28)

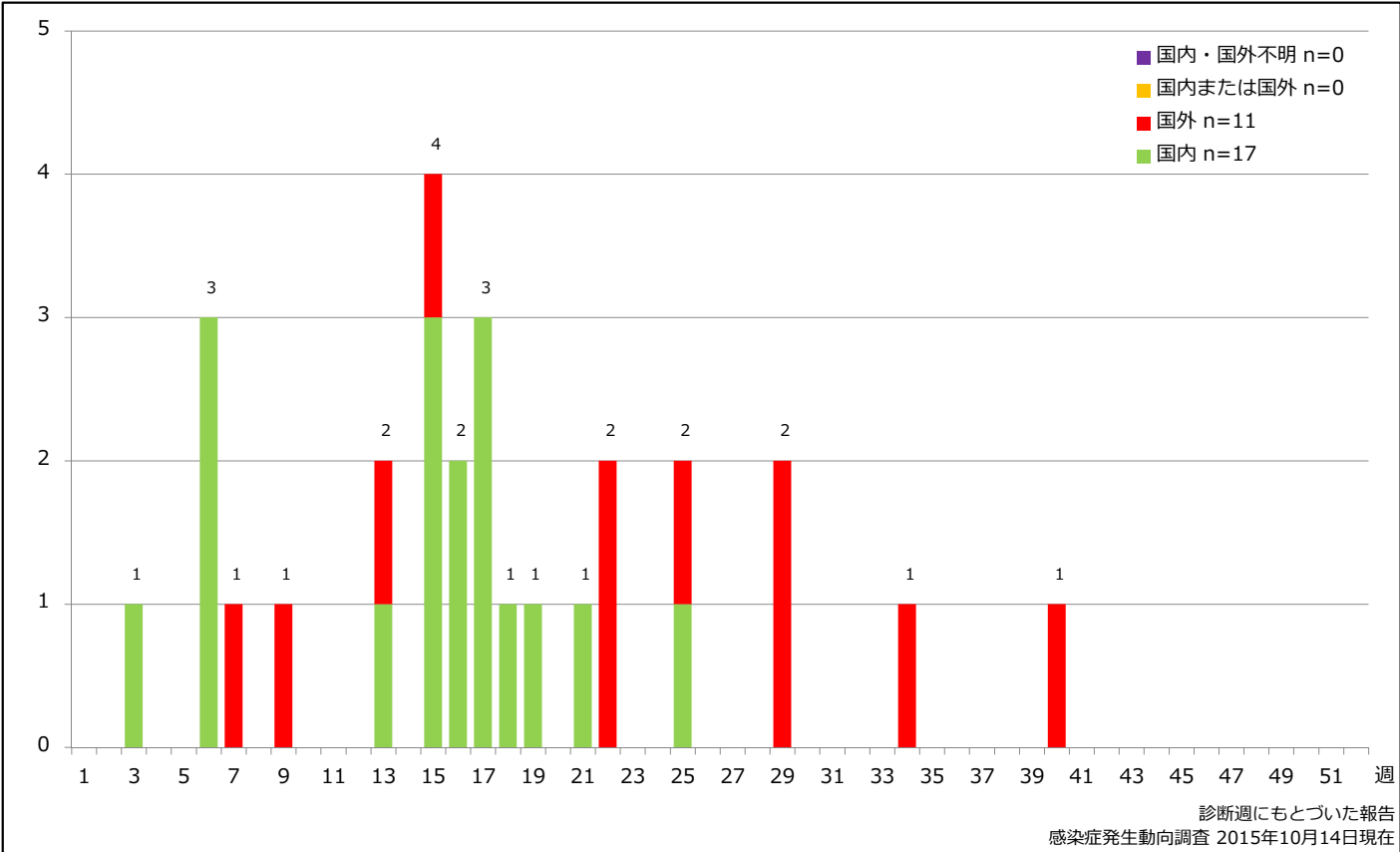
Percentage of cumulative measles cases by age group, week 1-41, 2015 (as of October 14, 2015)



8. 週別推定感染地域(国内・外)別麻疹報告数 2015年 第1~41週 (n=28)

Weekly measles cases by acquired region, week 1-41, 2015 (based on diagnosed week as of October 14, 2015)

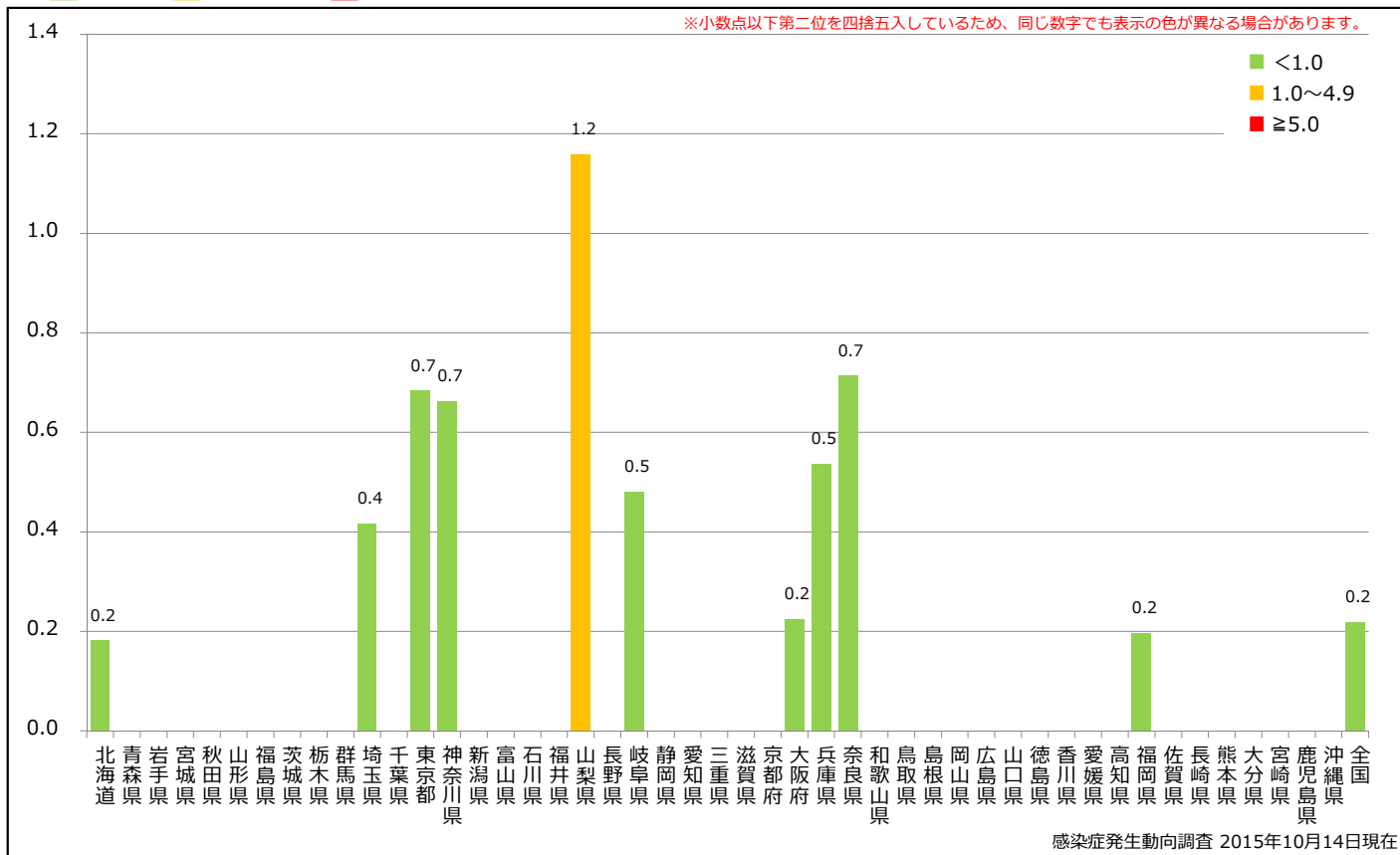
Domestic Imported Unspecified Unknown



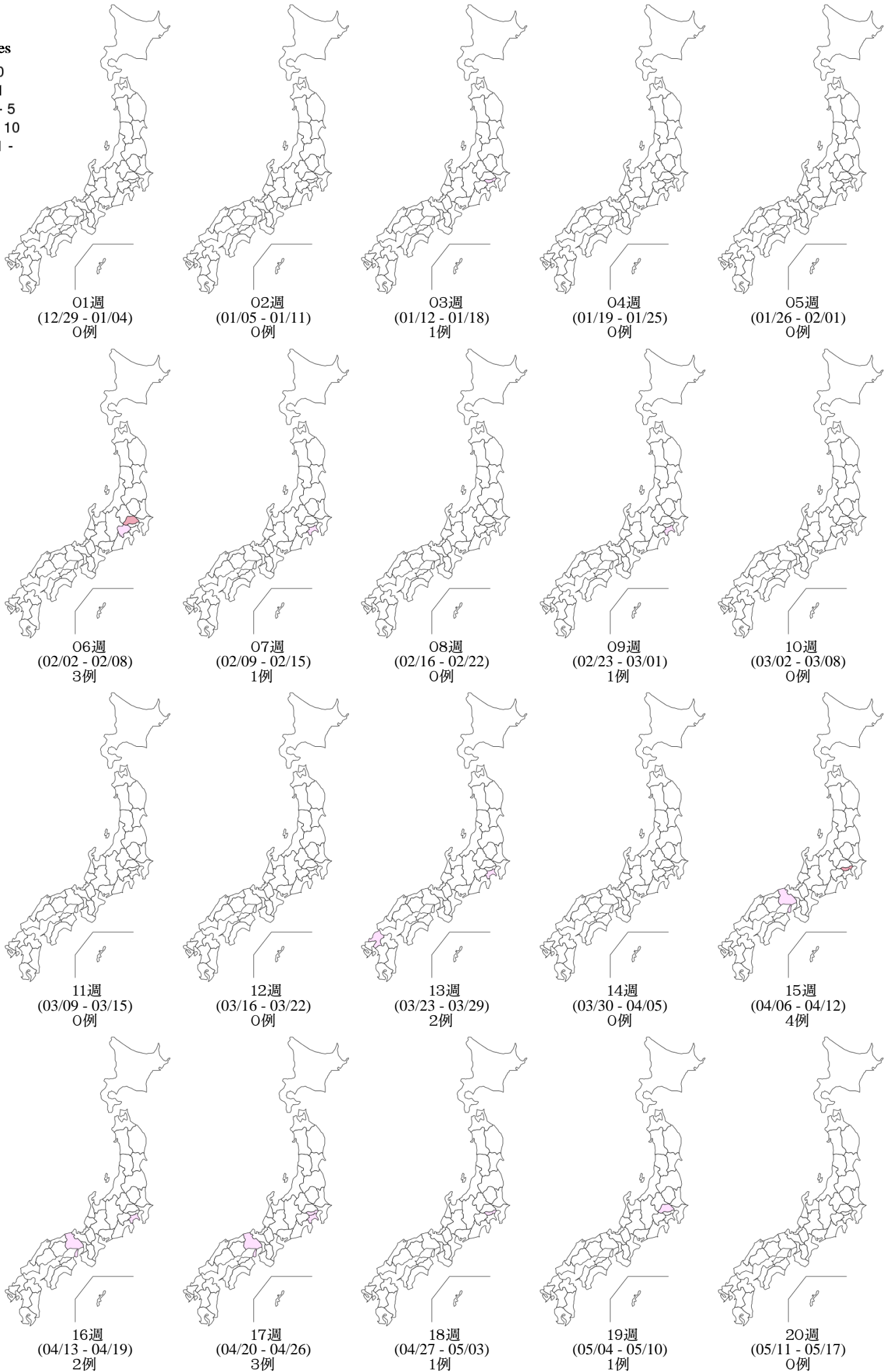
### 9. 都道府県別人口百万人あたり麻疹報告数 2015年 第1~41週 (n=28)

Reported measles cases per 1 million population by prefecture, week 1-41, 2015 (as of October 14, 2015)

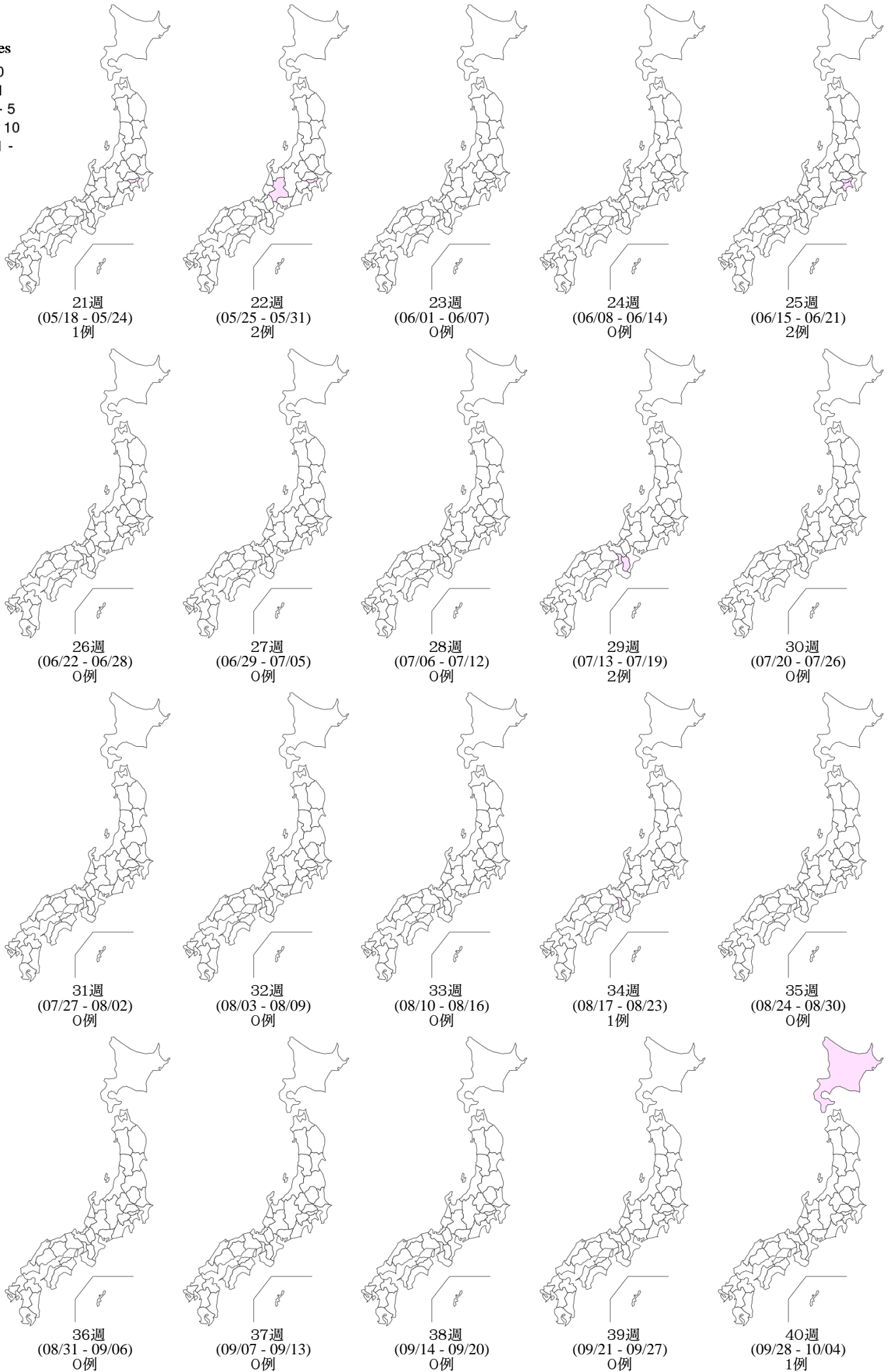
■ <1.0 ■ 1.0~4.9 ■ ≥5.0



Weekly measles cases from week 01 to week 41, 2015 (based on diagnosed week as of October 14, 2015)



Weekly measles cases from week 01 to week 41, 2015 (based on diagnosed week as of October 14, 2015)



10. 都道府県別麻疹週別報告状況 2015年 第1~41週 感染症発生動向調査  
Weekly measles cases from week 01 to week 41, 2015 (based on diagnosed week as of October 14, 2015)

2015年10月14日現在

報告数  
No. of cases

