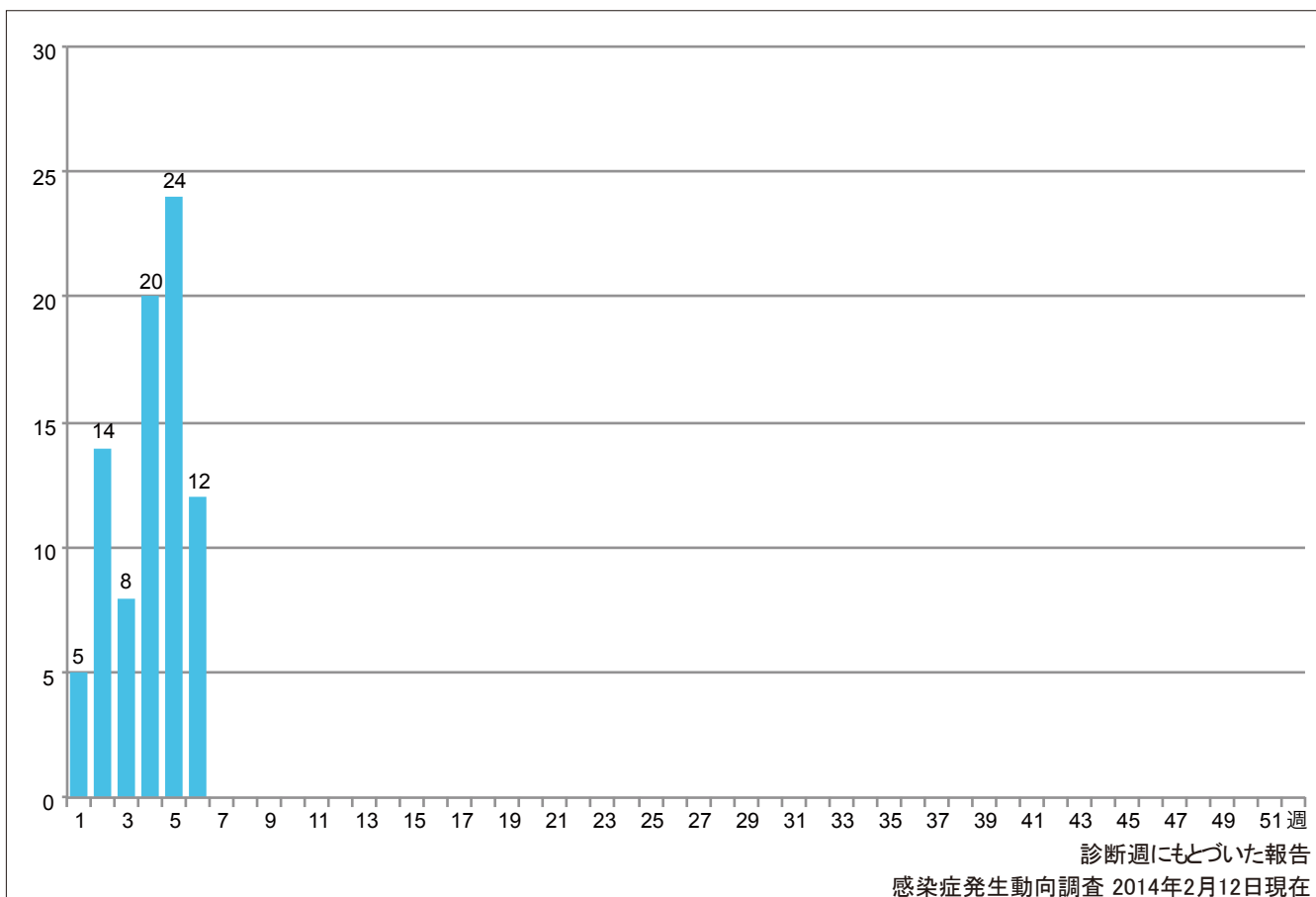


1. 週別麻疹報告数 2014年 第1~6週 (n=83)

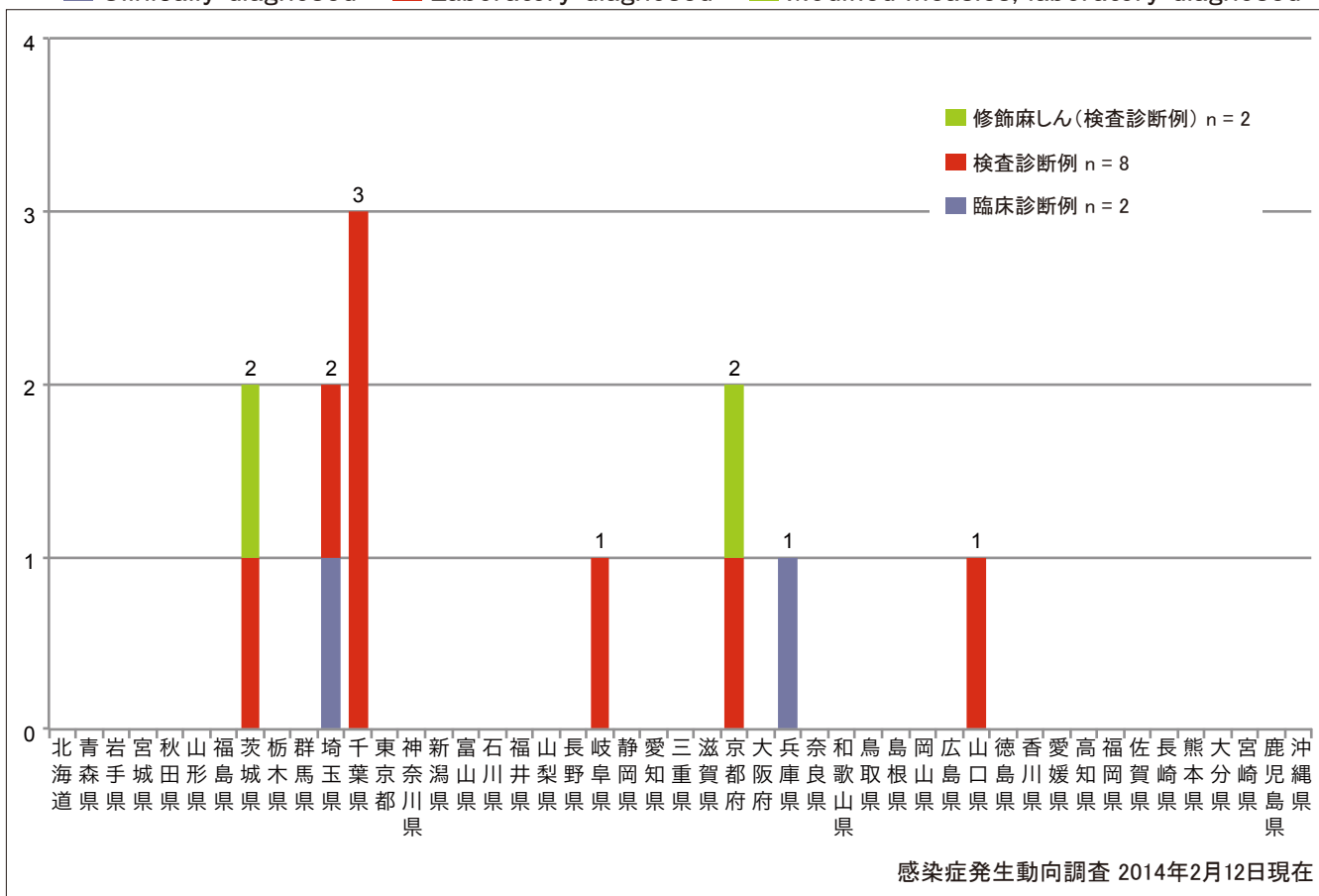
Weekly measles cases from week 1 to week 6, 2014 (based on diagnosed week as of February 12, 2014).



2. 都道府県別病型別麻疹報告数 2014年 第6週 (n=12)

Reported measles cases by prefecture and methods of diagnosis in week 6, 2014 (as of February 12, 2014).

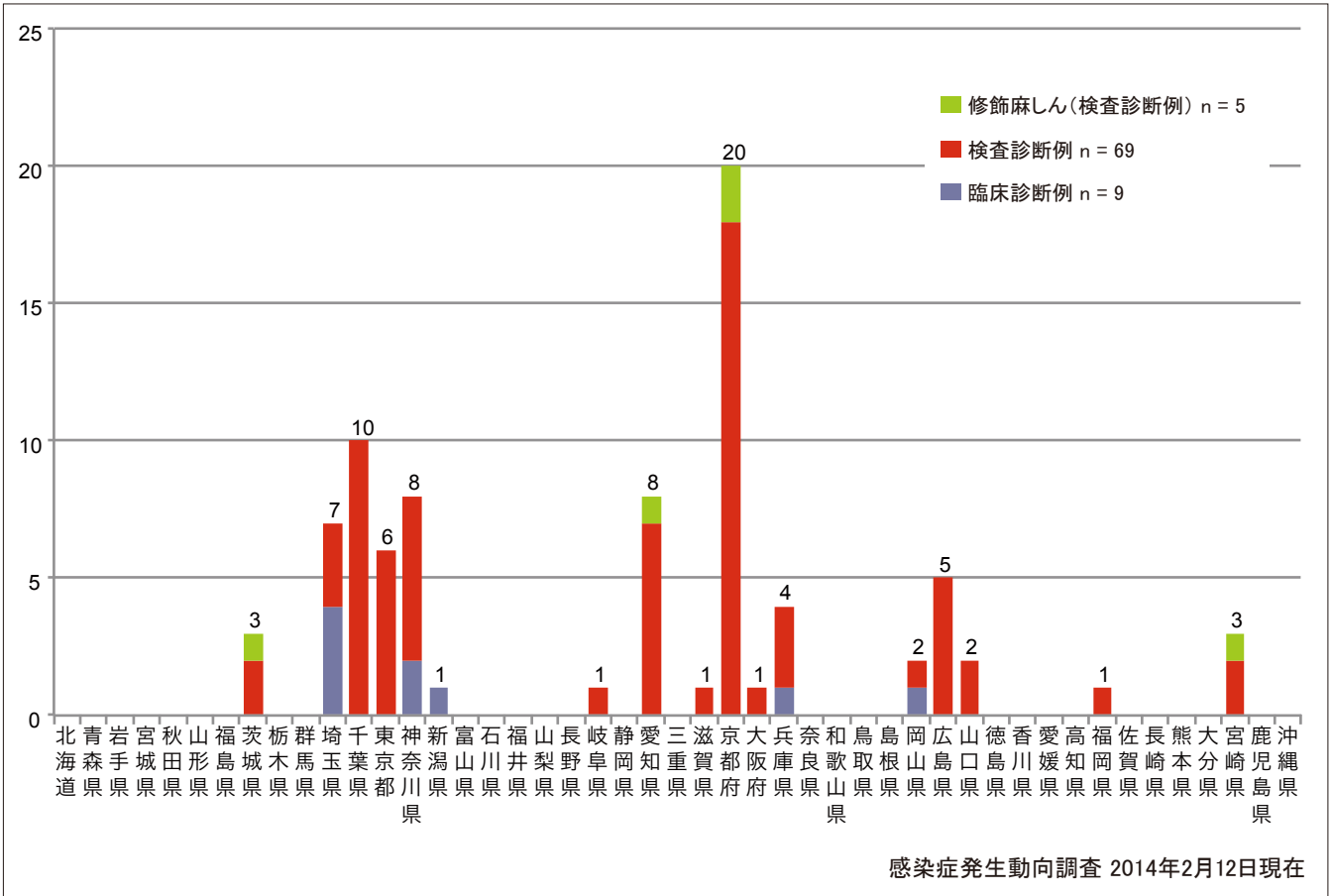
■ Clinically diagnosed ■ Laboratory diagnosed ■ Modified measles, laboratory diagnosed



3. 都道府県別病型別麻疹累積報告数 2014年 第1~6週 (n=83)

Cumulative measles cases by prefecture and methods of diagnosis from week 1 to week 6, 2014 (as of February 12, 2014).

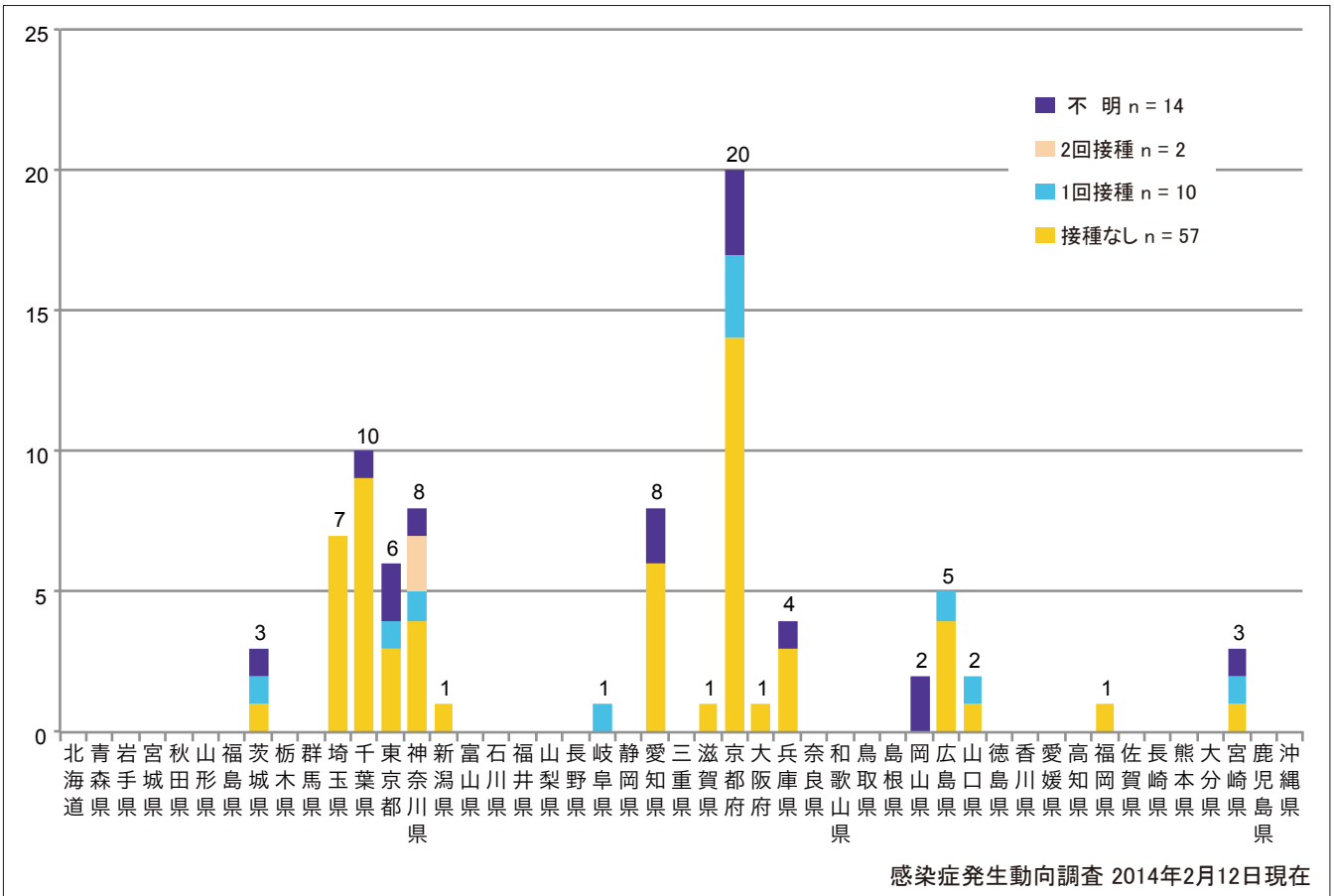
■ Clinically diagnosed ■ Laboratory diagnosed ■ Modified measles, laboratory diagnosed



4. 都道府県別接種歴別麻疹累積報告数 2014年 第1~6週 (n=83)

Cumulative measles cases by prefecture and vaccinated status from week 1 to week 6, 2014 (as of February 12, 2014).

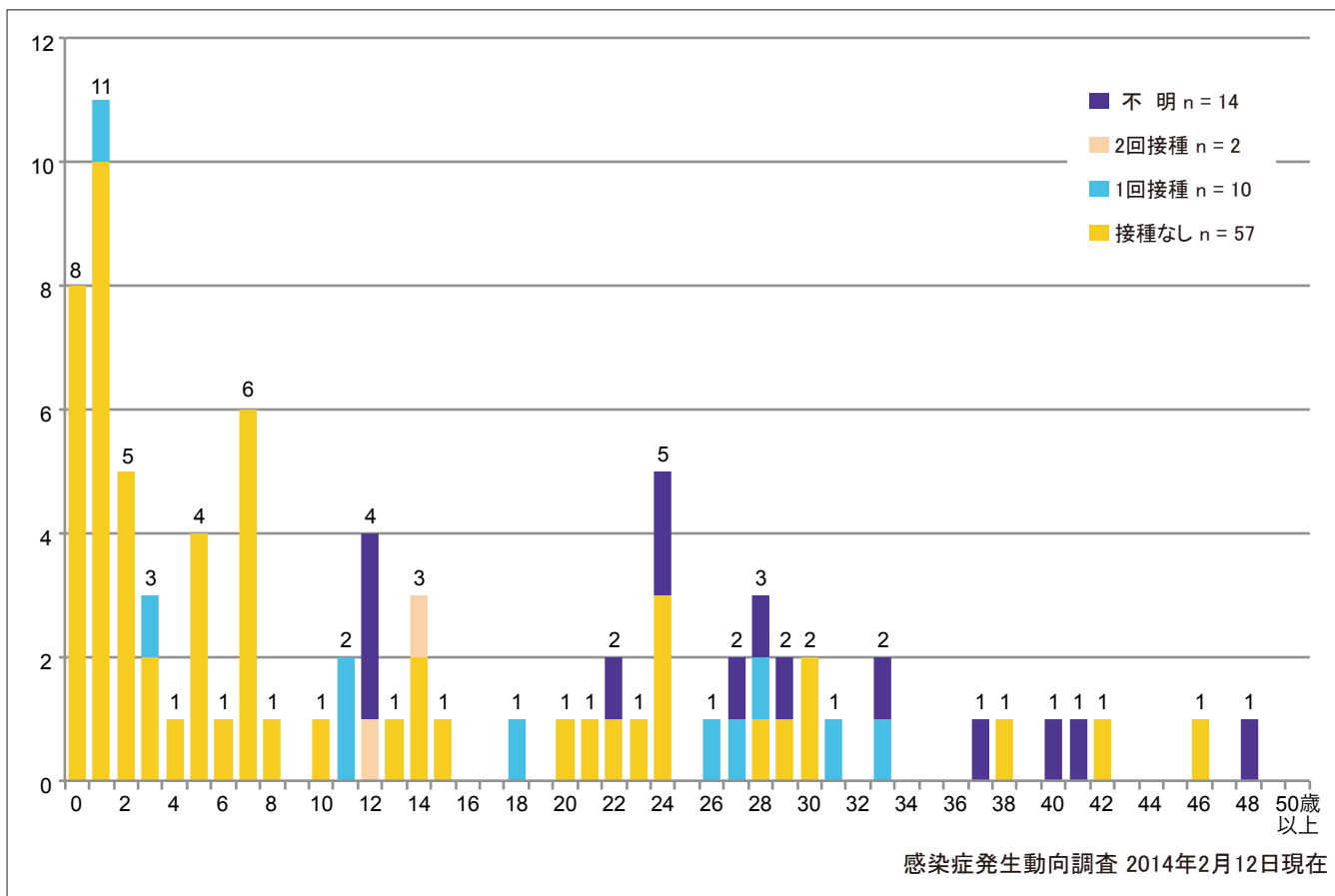
■ None ■ MCV1 ■ MCV2 ■ Unknown



5. 年齢群別接種歴別麻疹累積報告数 2014年 第1~6週(n=83)

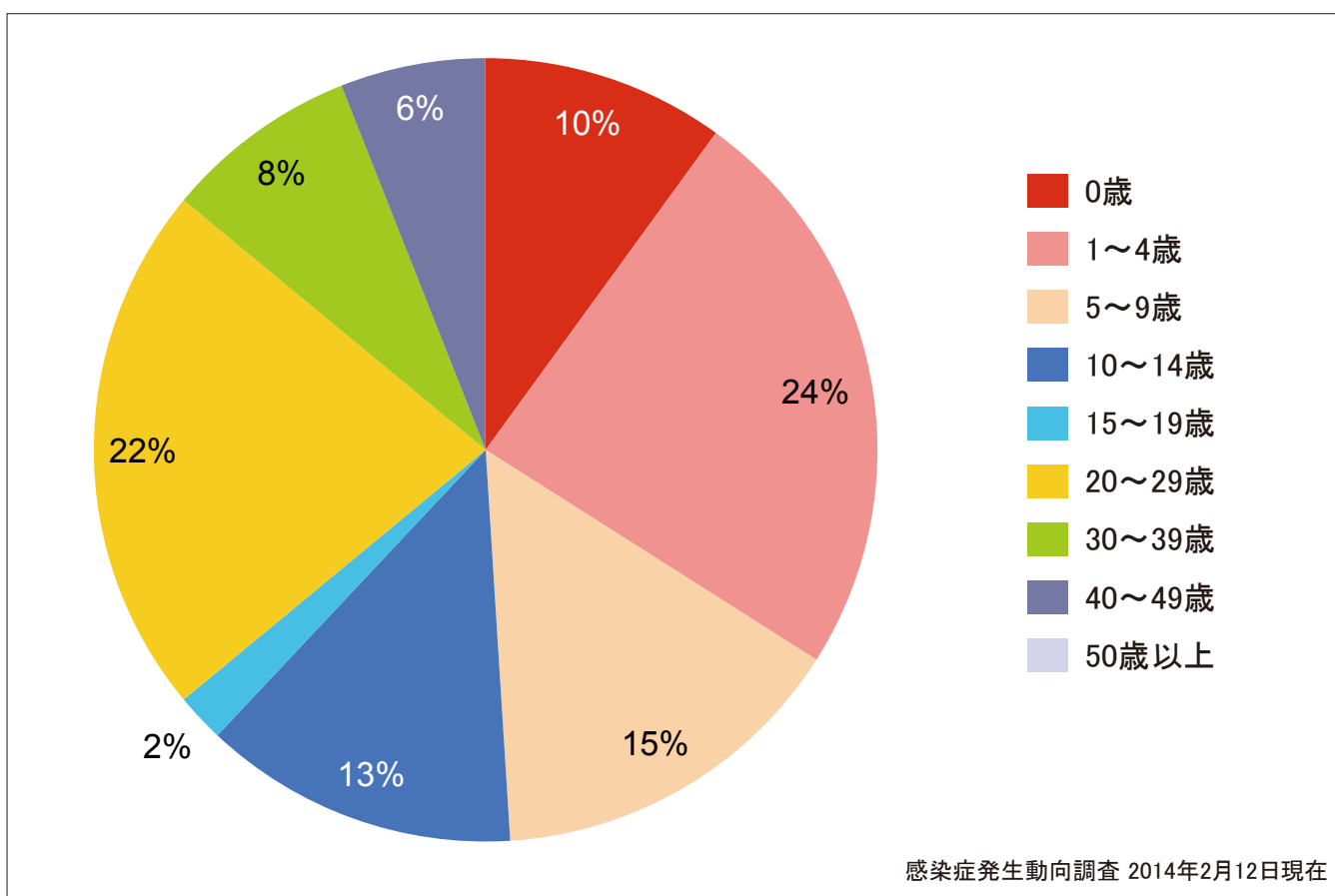
Cumulative measles cases by age and vaccinated status from week 1 to week 6, 2014 (as of February 12, 2014).

■ None ■ MCV1 ■ MCV2 ■ Unknown



6. 年齢群別麻疹累積報告数割合 2014年 第1~6週(n=83)

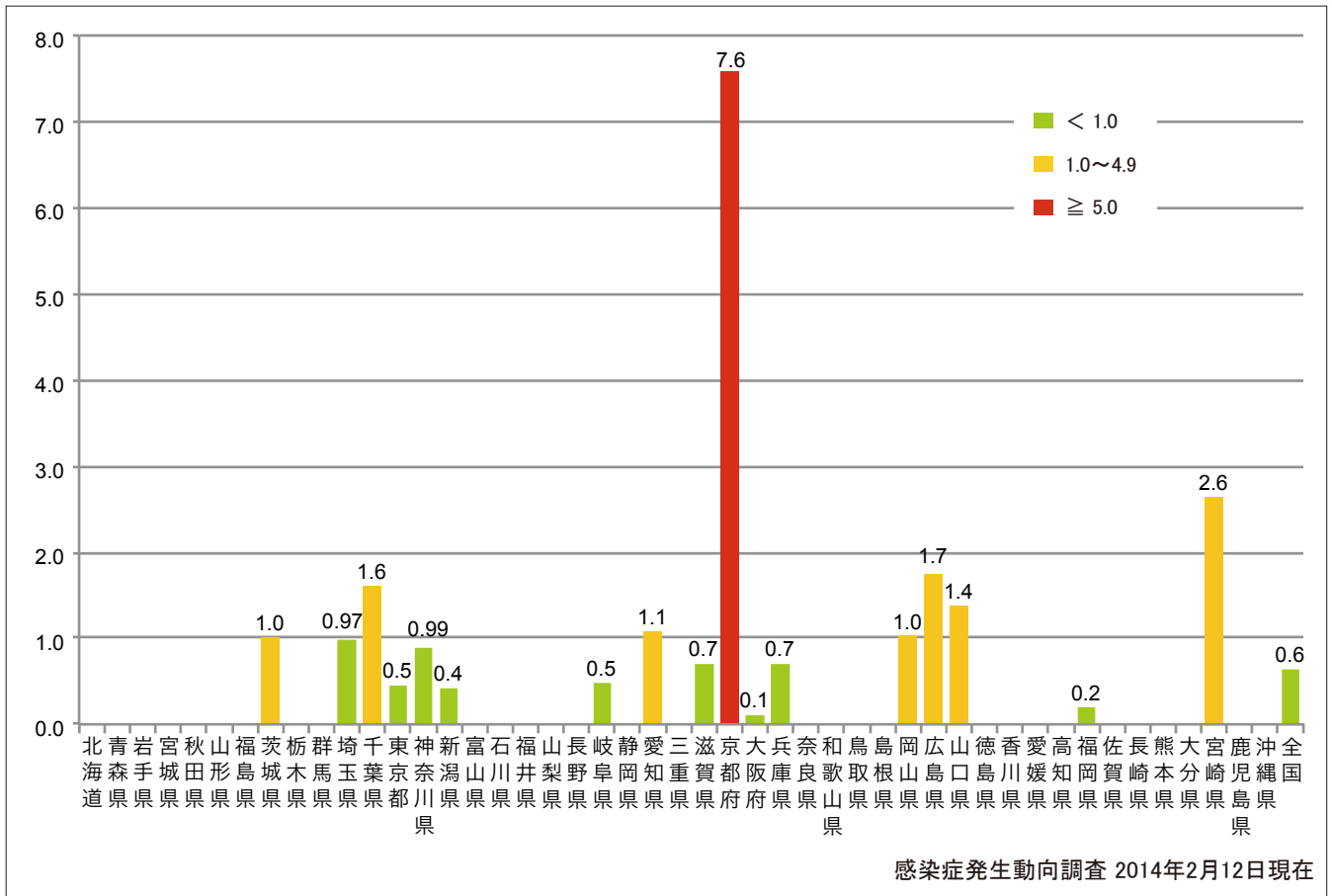
Percentage of cumulative measles cases by age group from week 1 to week 6, 2014 (as of February 12, 2014).



7. 都道府県別人口百万人あたり麻疹報告数 2014年 第1~6週 (n=83)

Number of reported cases per 1 million population by prefectures from week 1 to week 6, 2014 (as of February 12, 2014).

■ <1.0 ■ 1.0~4.9 ■ ≥5.0



8. 都道府県別麻疹週別報告状況 2014年 第1~06週 感染症発生動向調査

2014年02月12日現在

Weekly measles cases from week 1 to week 06, 2014 (based on diagnosed week as of February 12, 2014)

報告数
No. of cases

