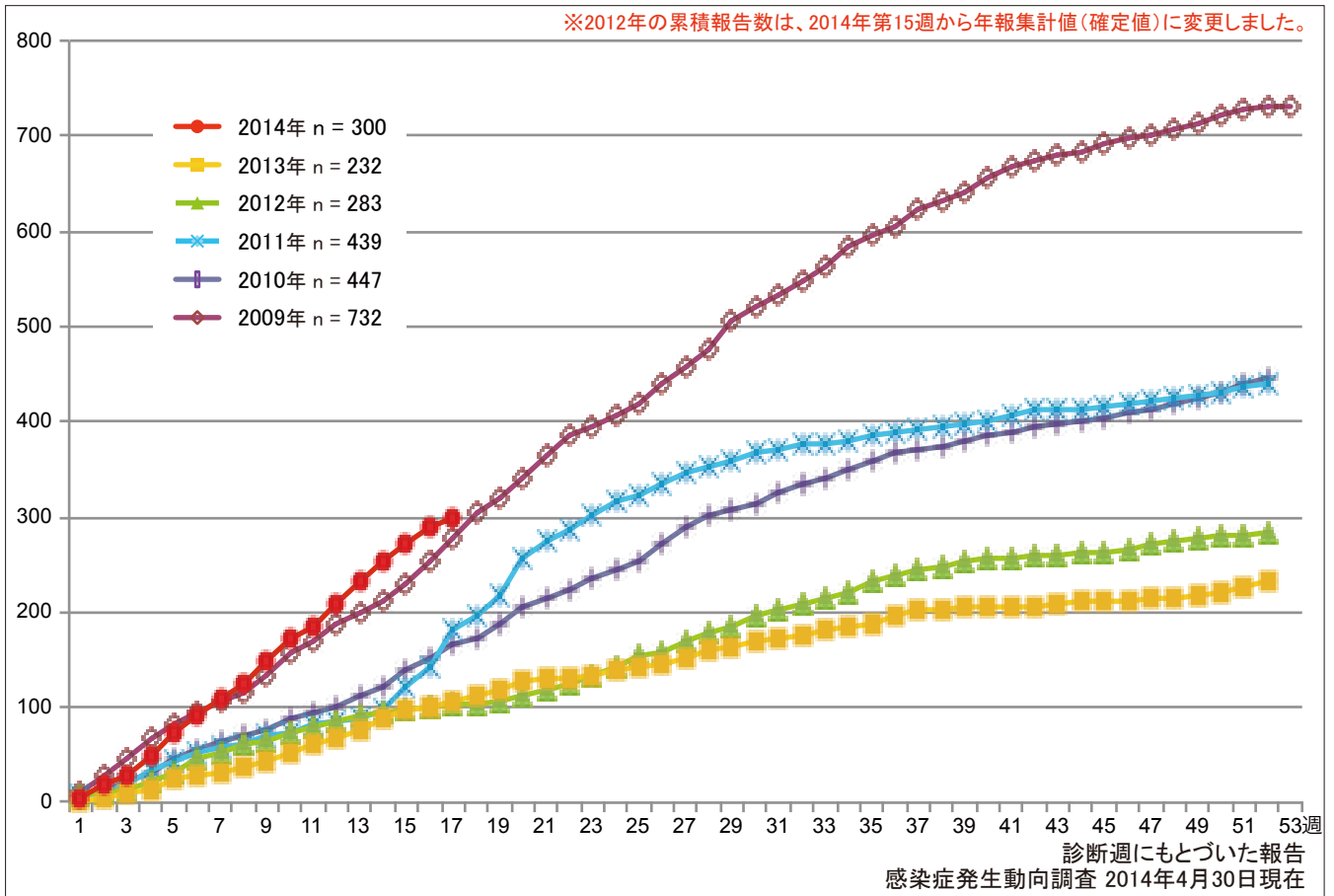


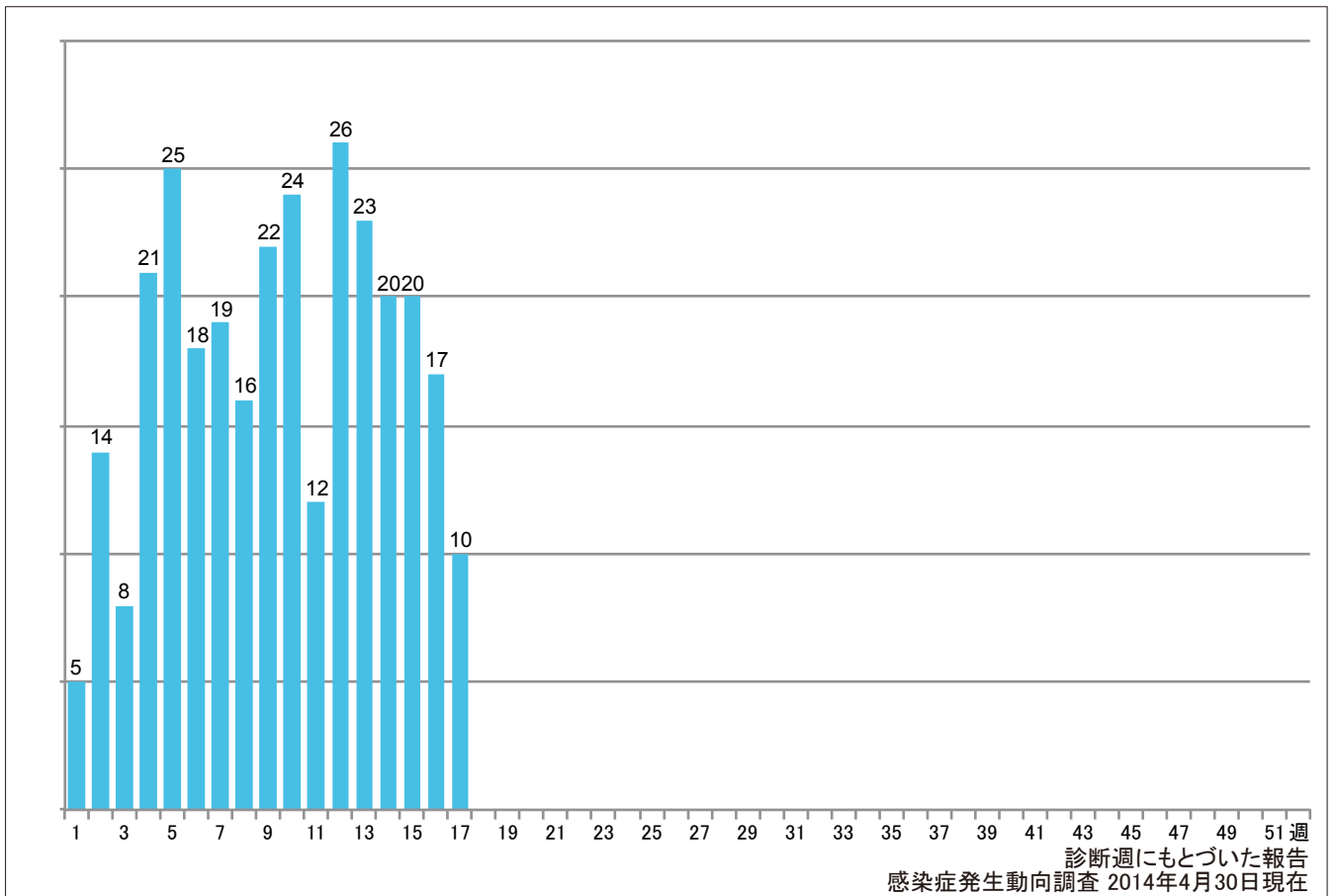
1. 麻疹累積報告数の推移 2009～2014年(第1～17週)

Cumulative number of measles cases by week, 2009-2014 (week1-17)
 (based on diagnosed week as of April 30, 2014).



2. 週別麻疹報告数 2014年 第1～17週(n=300)

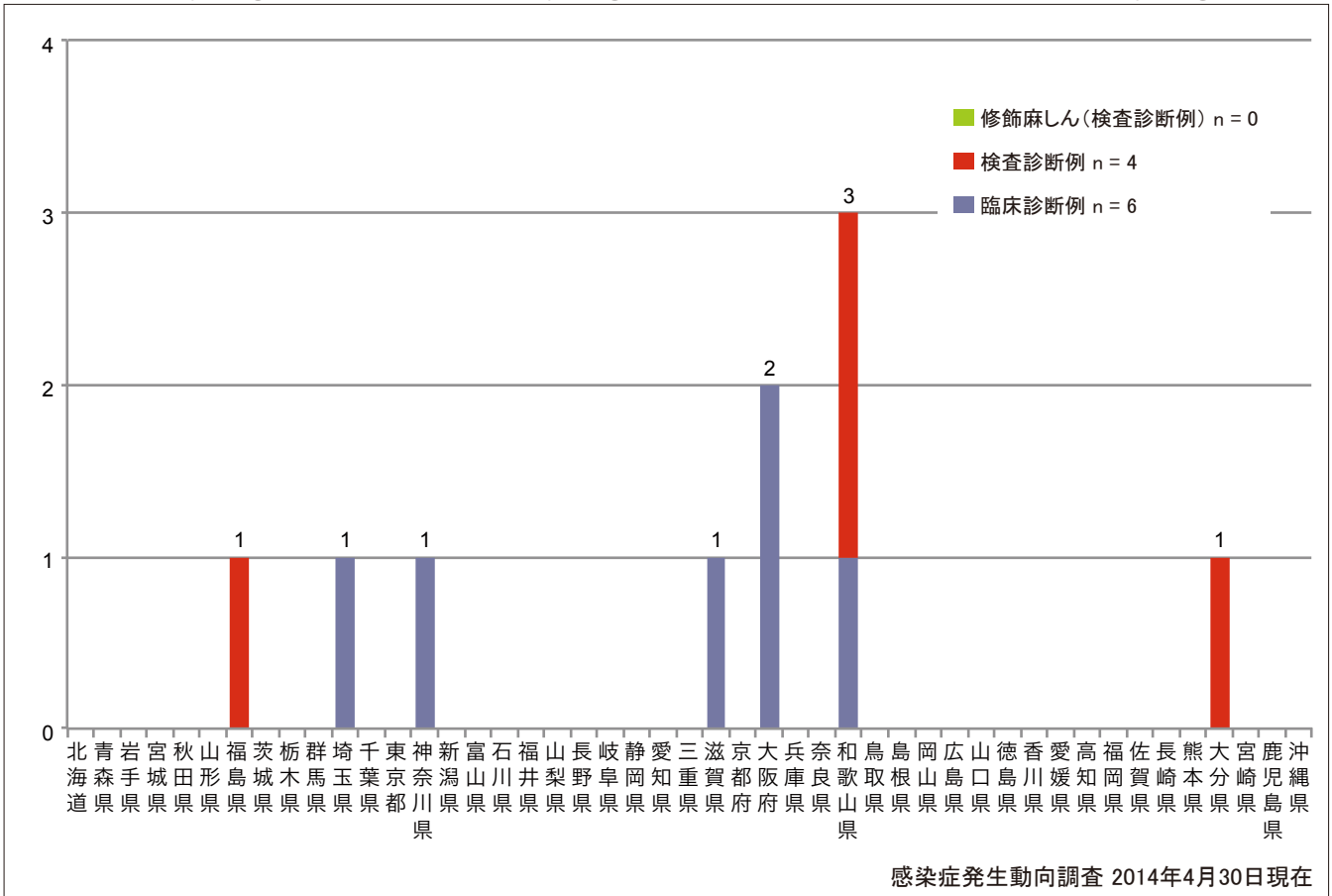
Weekly measles cases from week 1 to week 17, 2014 (based on diagnosed week as of April 30, 2014).



3. 都道府県別病型別麻疹報告数 2014年 第17週 (n=10)

Reported measles cases by prefecture and methods of diagnosis in week 17, 2014 (as of April 30, 2014).

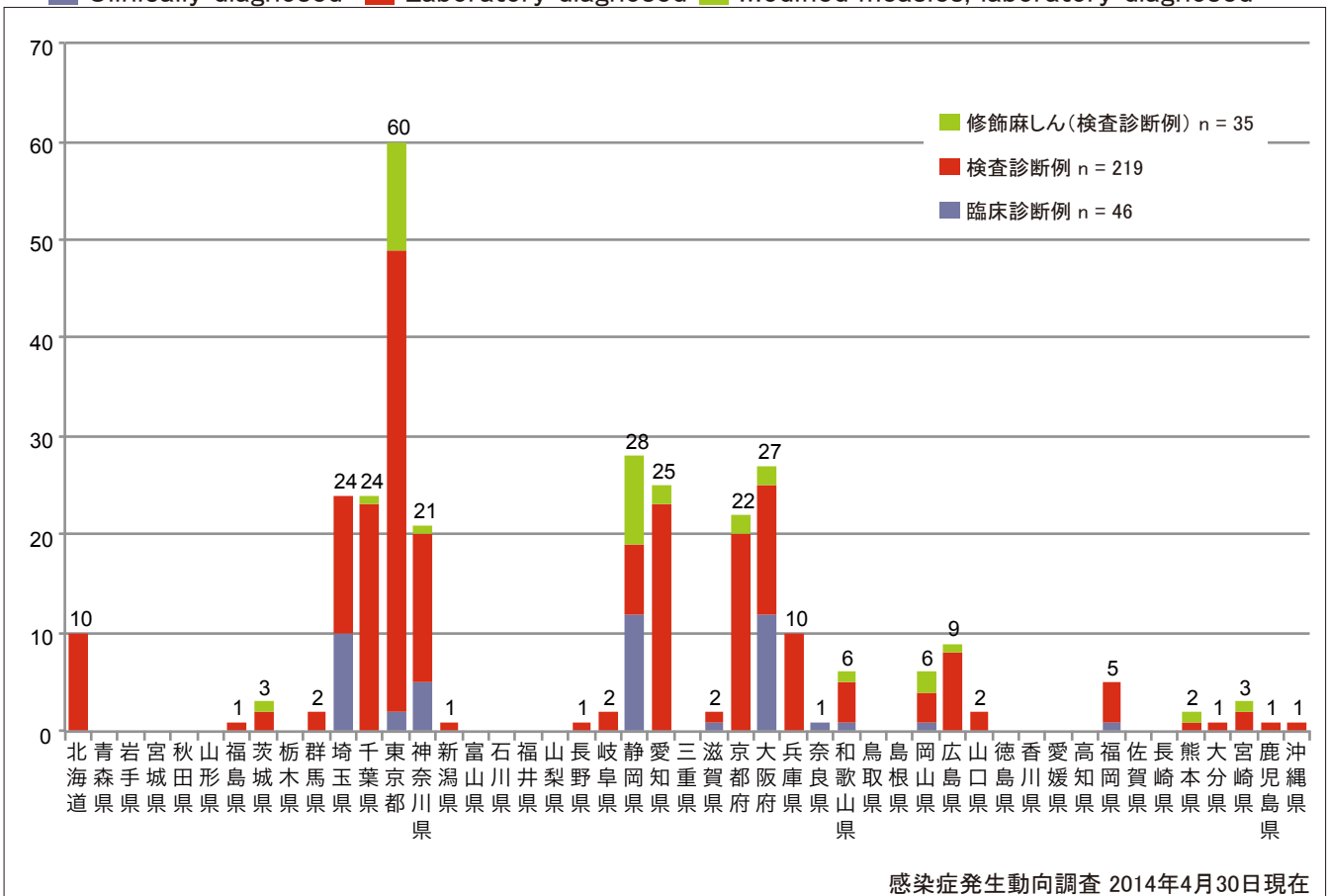
■ Clinically diagnosed ■ Laboratory diagnosed ■ Modified measles, laboratory diagnosed



4. 都道府県別病型別麻疹累積報告数 2014年 第1~17週 (n=300)

Cumulative measles cases by prefecture and methods of diagnosis from week 1 to week 17, 2014 (as of April 30, 2014).

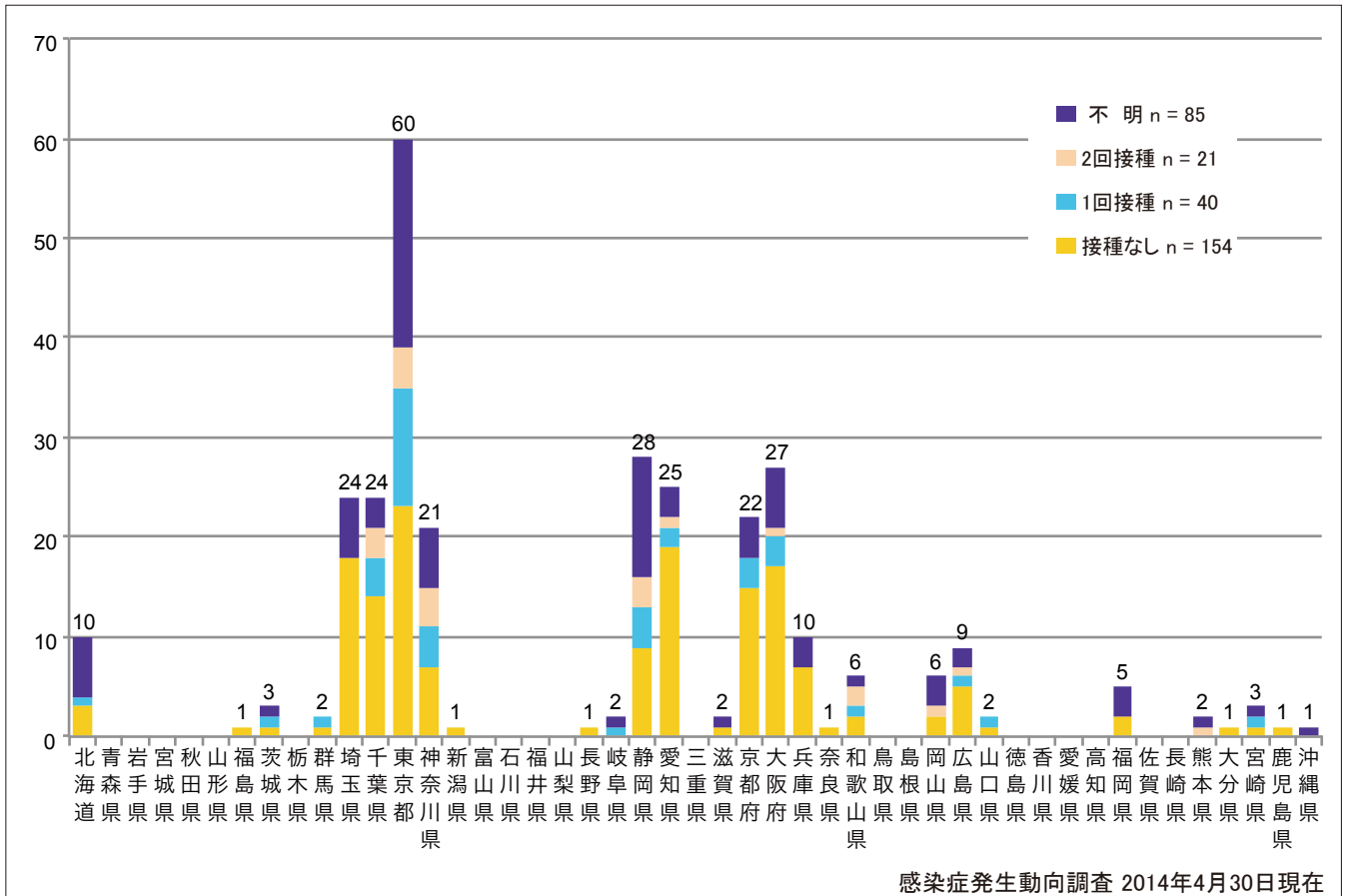
■ Clinically diagnosed ■ Laboratory diagnosed ■ Modified measles, laboratory diagnosed



5. 都道府県別接種歴別麻疹累積報告数 2014年 第1~17週 (n=300)

Cumulative measles cases by prefecture and vaccinated status from week 1 to week 17, 2014 (as of April 30, 2014).

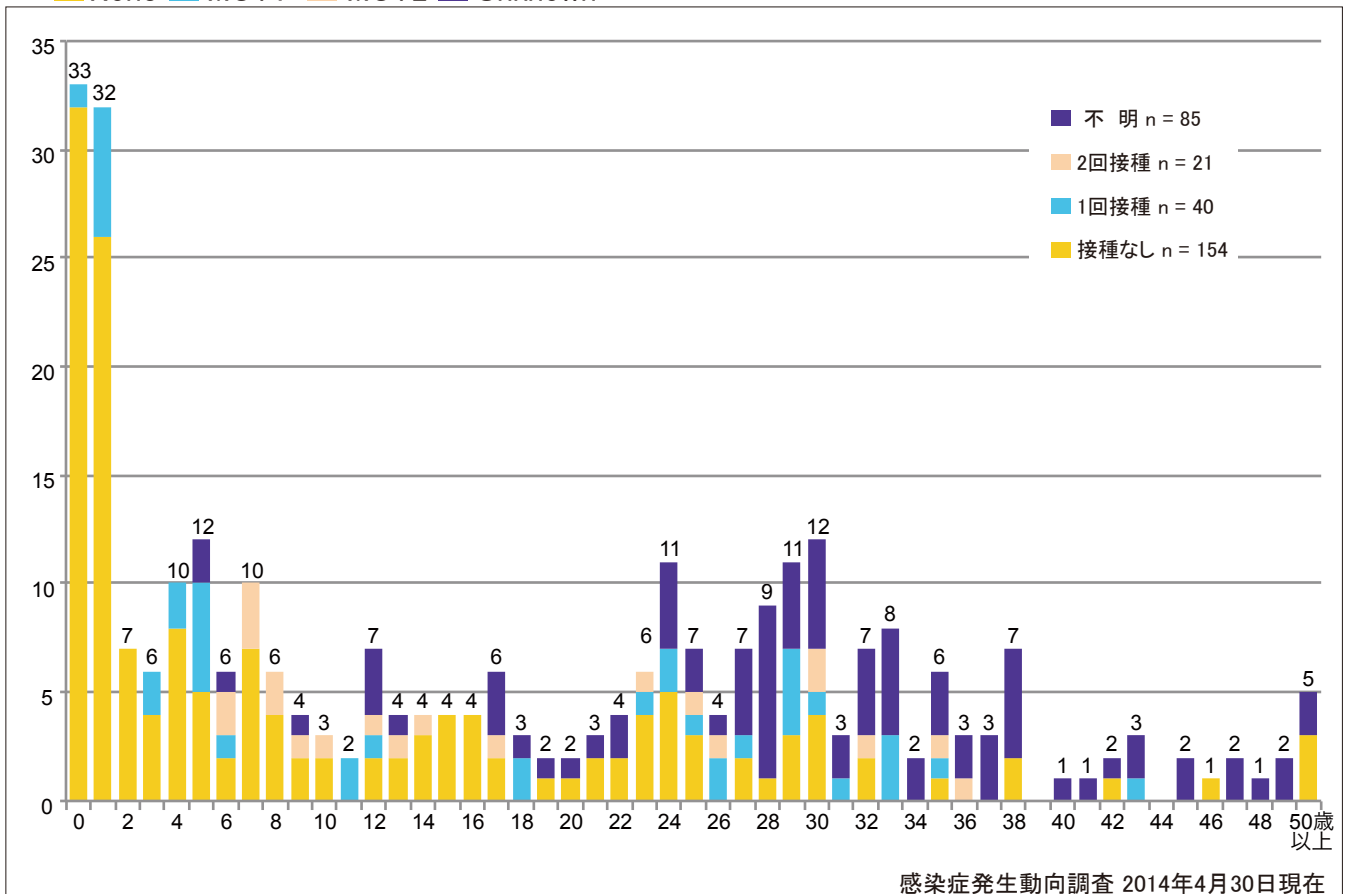
■ None ■ MCV1 ■ MCV2 ■ Unknown



6. 年齢群別接種歴別麻疹累積報告数 2014年 第1~17週 (n=300)

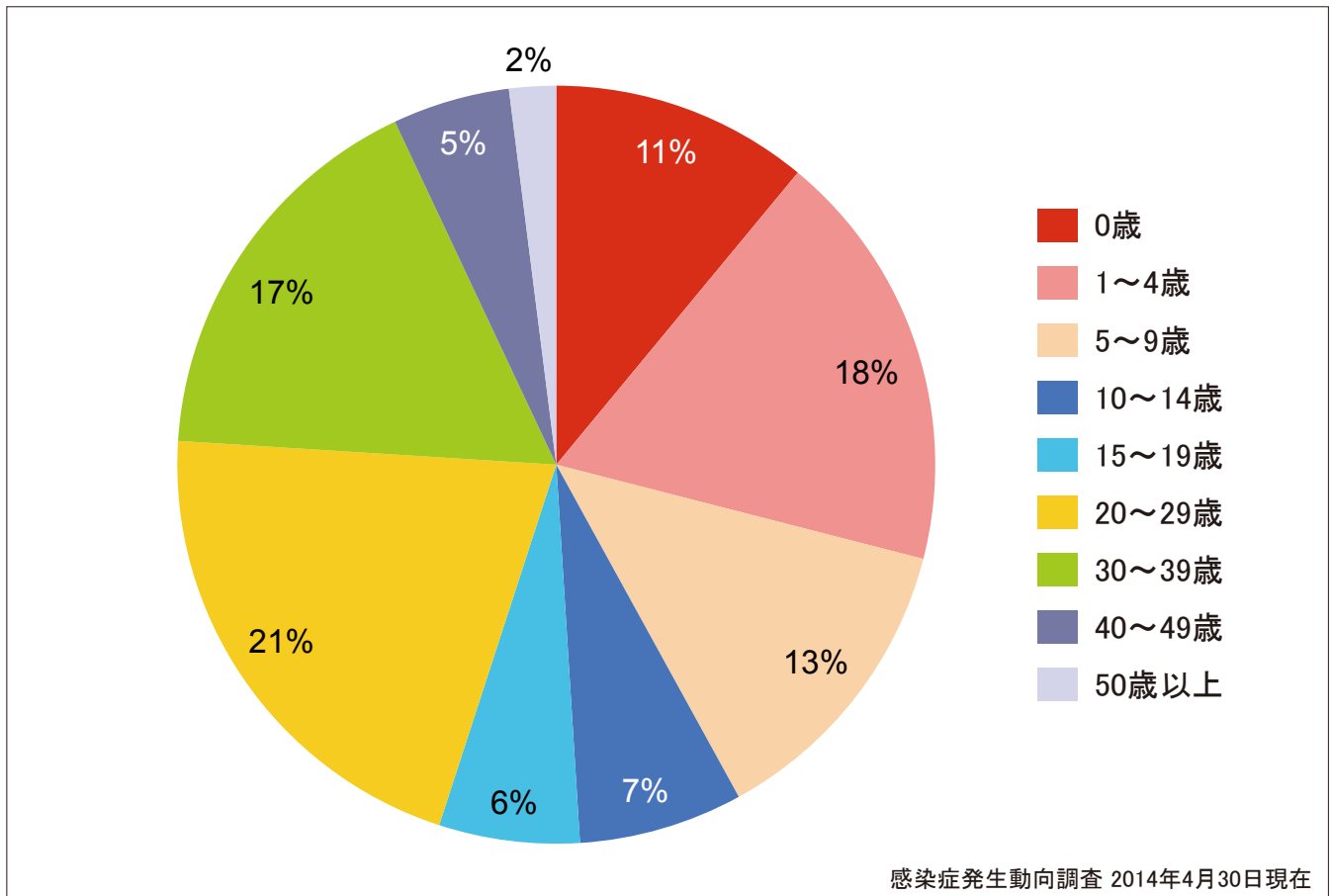
Cumulative measles cases by age and vaccinated status from week 1 to week 17, 2014 (as of April 30, 2014).

■ None ■ MCV1 ■ MCV2 ■ Unknown



7. 年齢群別麻疹累積報告数割合 2014年 第1～17週 (n=300)

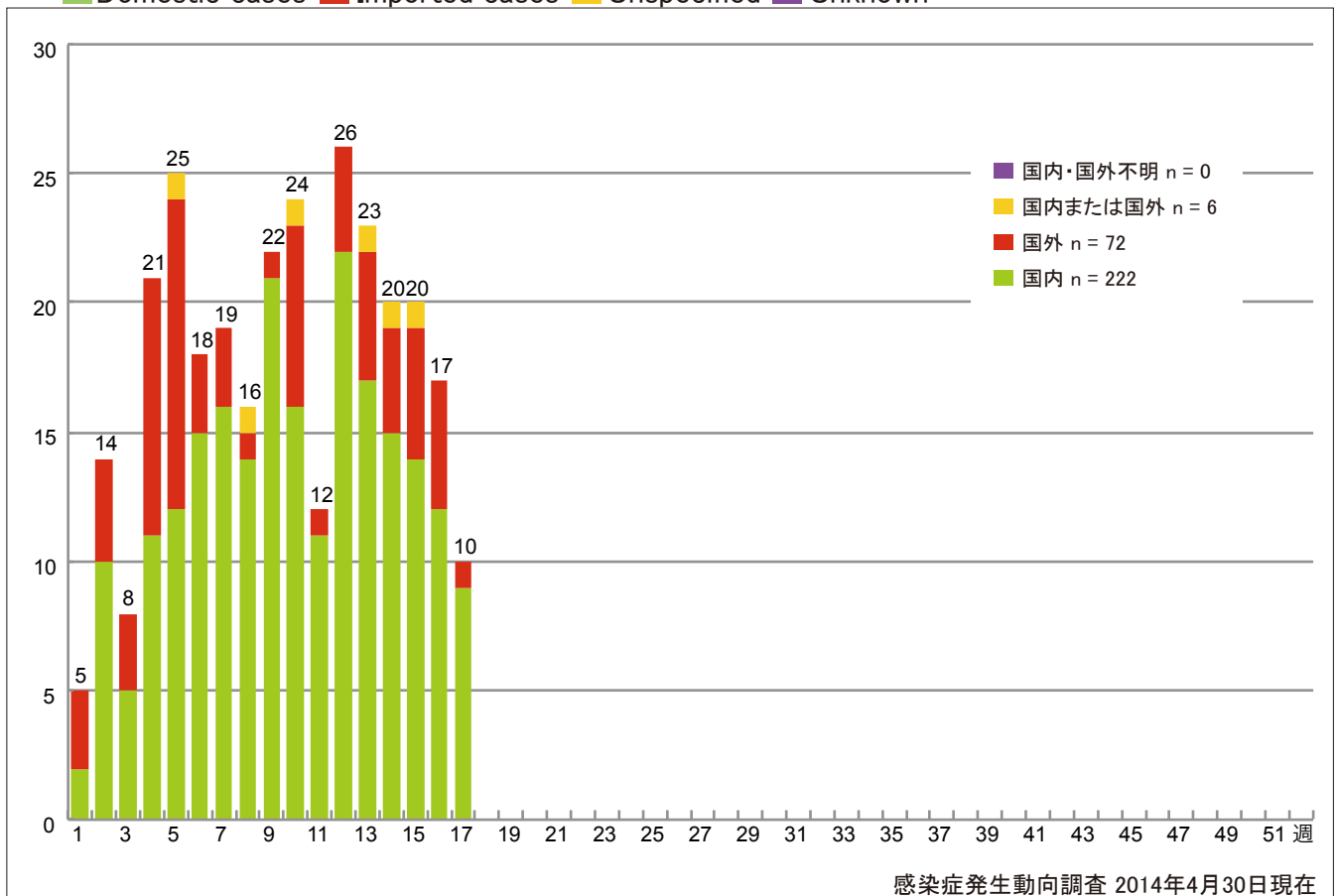
Percentage of cumulative measles cases by age group from week 1 to week 17, 2014 (as of April 30, 2014).



8. 週別推定感染地域(国内・外)別麻疹報告数 2014年 第1～17週 (n=300)

Weekly measles cases by acquired region from week 1 to week 17, 2014 (based on diagnosed week as of April 30, 2014).

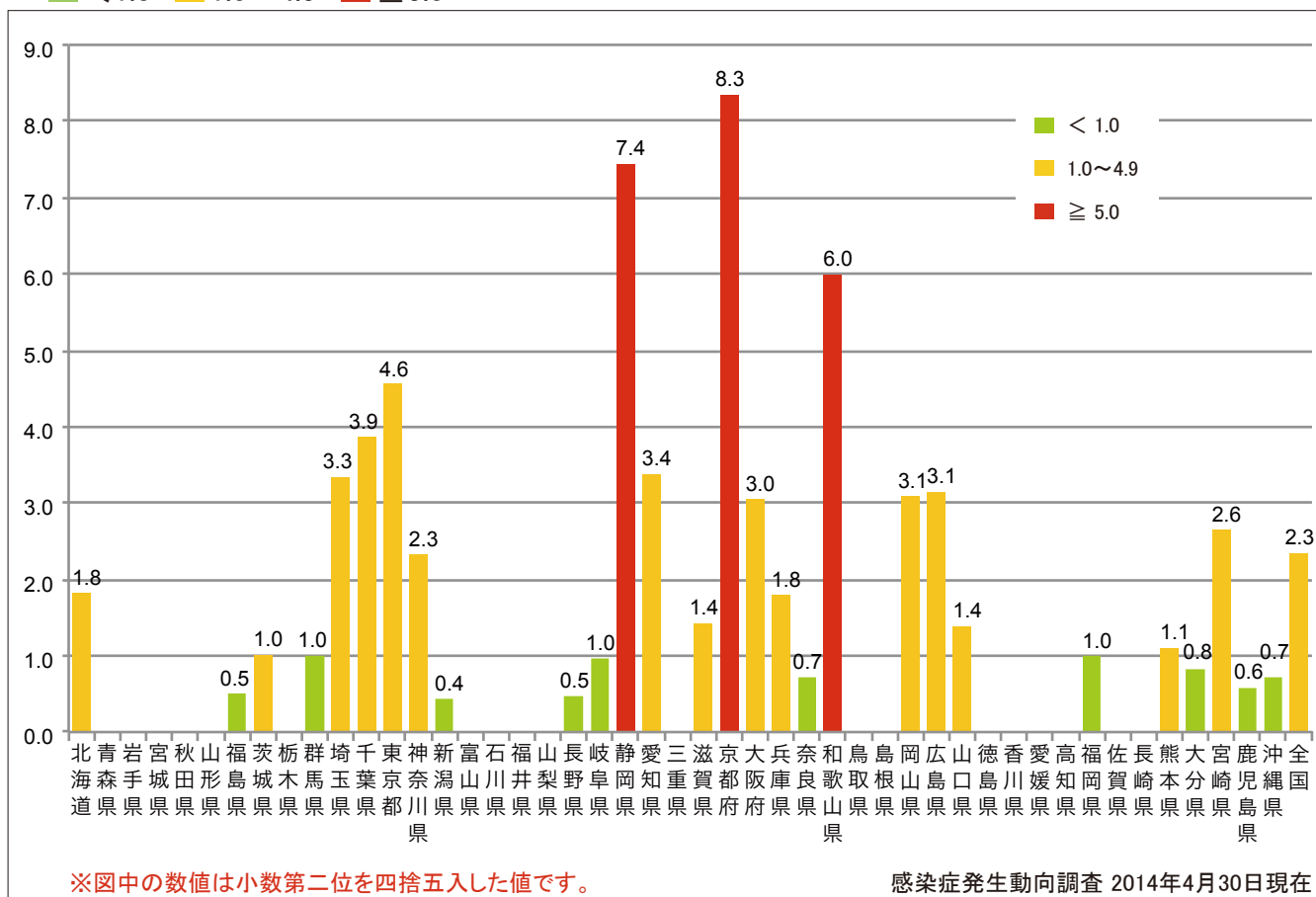
Domestic cases Imported cases Unspecified Unknown



9. 都道府県別人口百万人あたり麻しん報告数 2014年 第1~17週 (n=300)

Number of reported cases per 1 million population by prefectures from week 1 to week 17, 2014 (as of April 30, 2014).

■ < 1.0 ■ 1.0~4.9 ■ ≥ 5.0



注：第17週に10人の新規報告がありました。第16週と第17週の累積報告数は300で同数になっています。これは、第17週のデータ集計時に、過去に報告されたデータが一部修正中であったことによります。第18週の速報グラフでは修正後のデータが反映されます。

Note: The cumulative number cases reported for the 16th week and the 17th week is the same (N=300) even though 10 additional cases were reported during week 17. The total for week 16 was 300 as the data aggregated on April 30, 2014 included data reported in the past that was still being modified. The revised data will be reflected in the preliminary graph for week 18.

10. 都道府県別麻疹週別報告状況 2014年 第1~17週 感染症発生動向調査
 Weekly measles cases from week 1 to week 17, 2014 (based on diagnosed week as of April 30, 2014)

2014年04月30日現在

