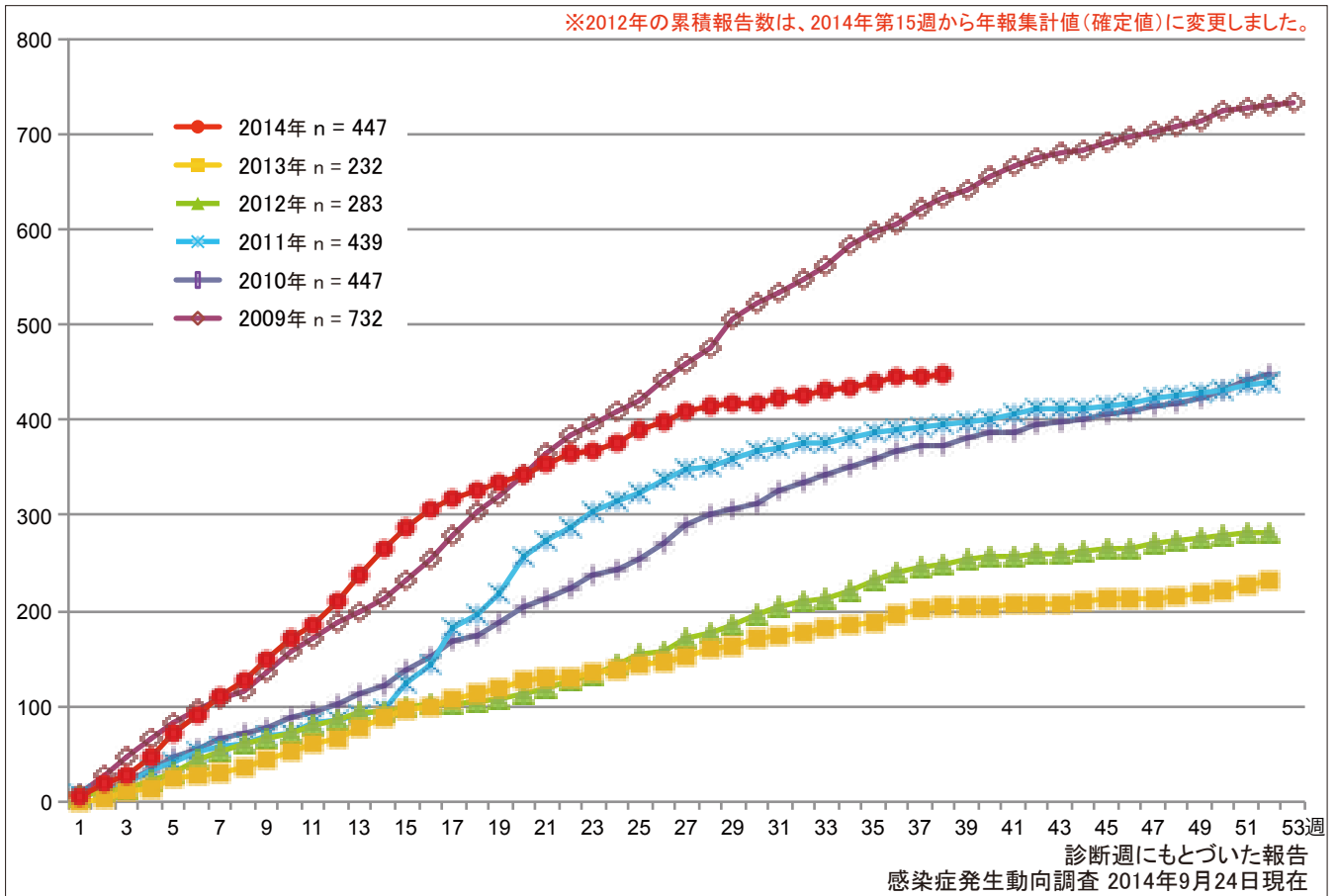


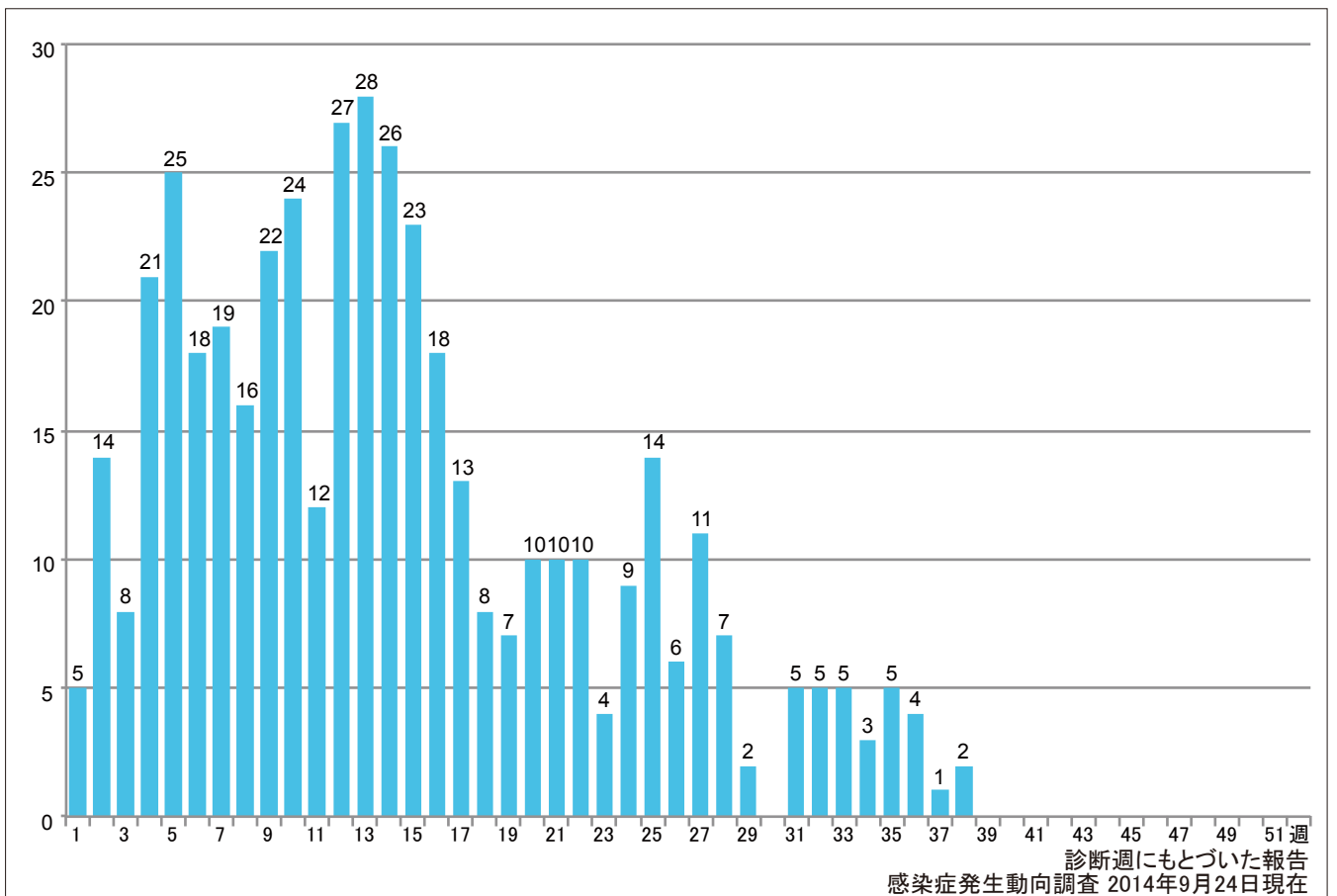
1. 麻疹累積報告数の推移 2009～2014年(第1～38週)

Cumulative number of measles cases by week, 2009-2014 (week1-38)  
 (based on diagnosed week as of September 24, 2014).



2. 週別麻疹報告数 2014年 第1～38週(n=447)

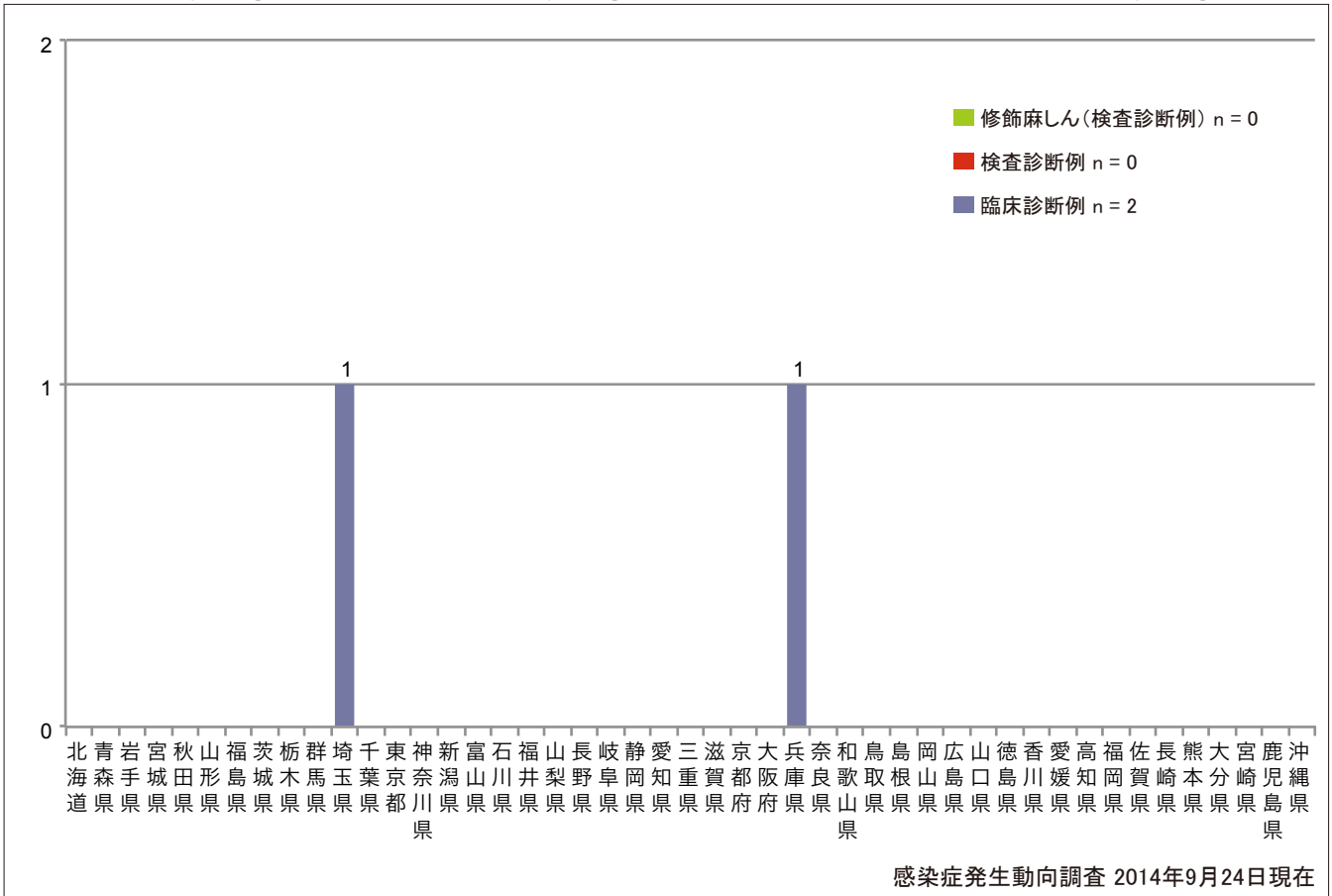
Weekly measles cases from week 1 to week 38, 2014 (based on diagnosed week as of September 24, 2014).



3. 都道府県別病型別麻疹報告数 2014年 第38週 (n=2)

Reported measles cases by prefecture and methods of diagnosis in week 38, 2014 (as of September 24, 2014).

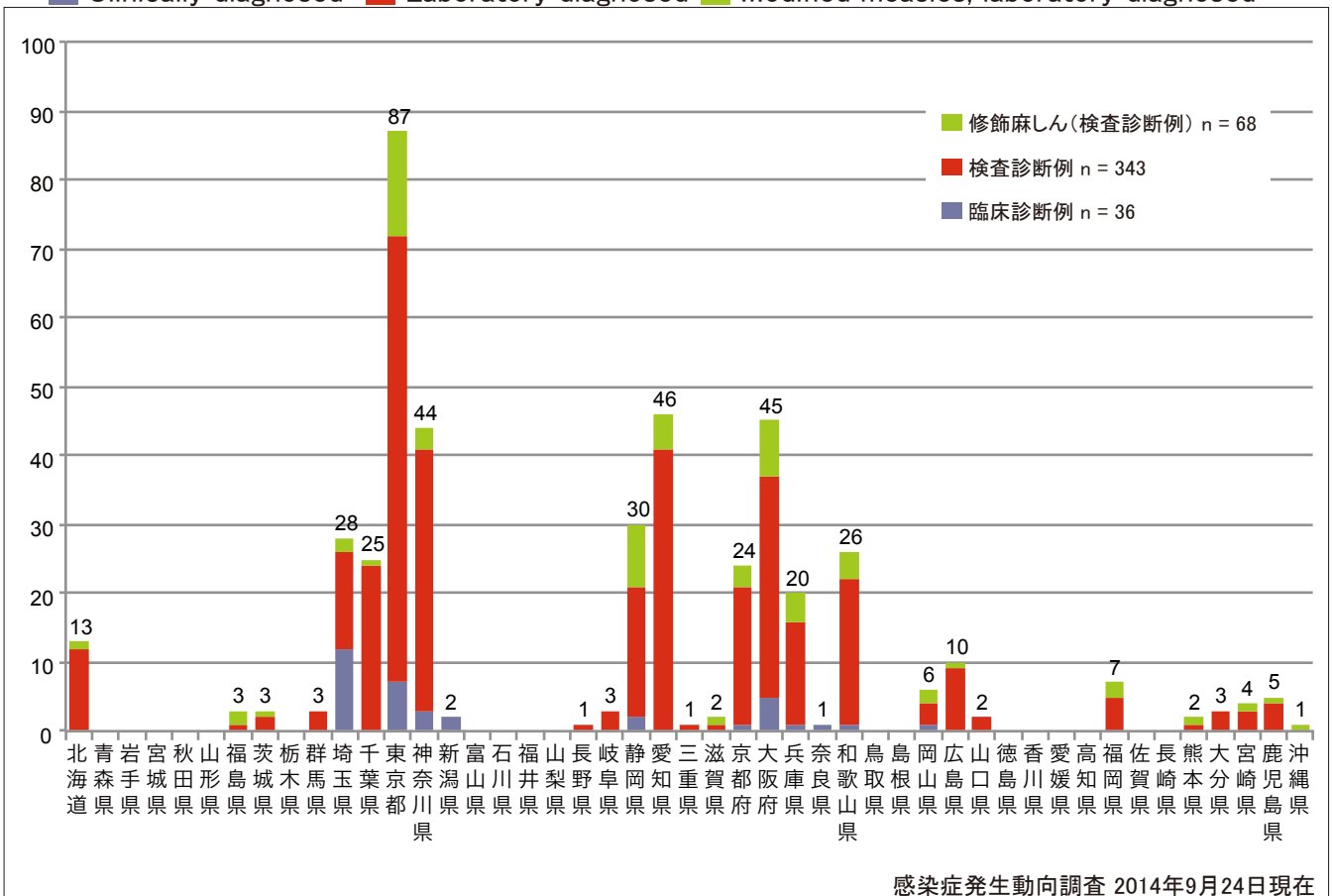
■ Clinically diagnosed ■ Laboratory diagnosed ■ Modified measles, laboratory diagnosed



4. 都道府県別病型別麻疹累積報告数 2014年 第1~38週 (n=447)

Cumulative measles cases by prefecture and methods of diagnosis from week 1 to week 38, 2014 (as of September 24, 2014).

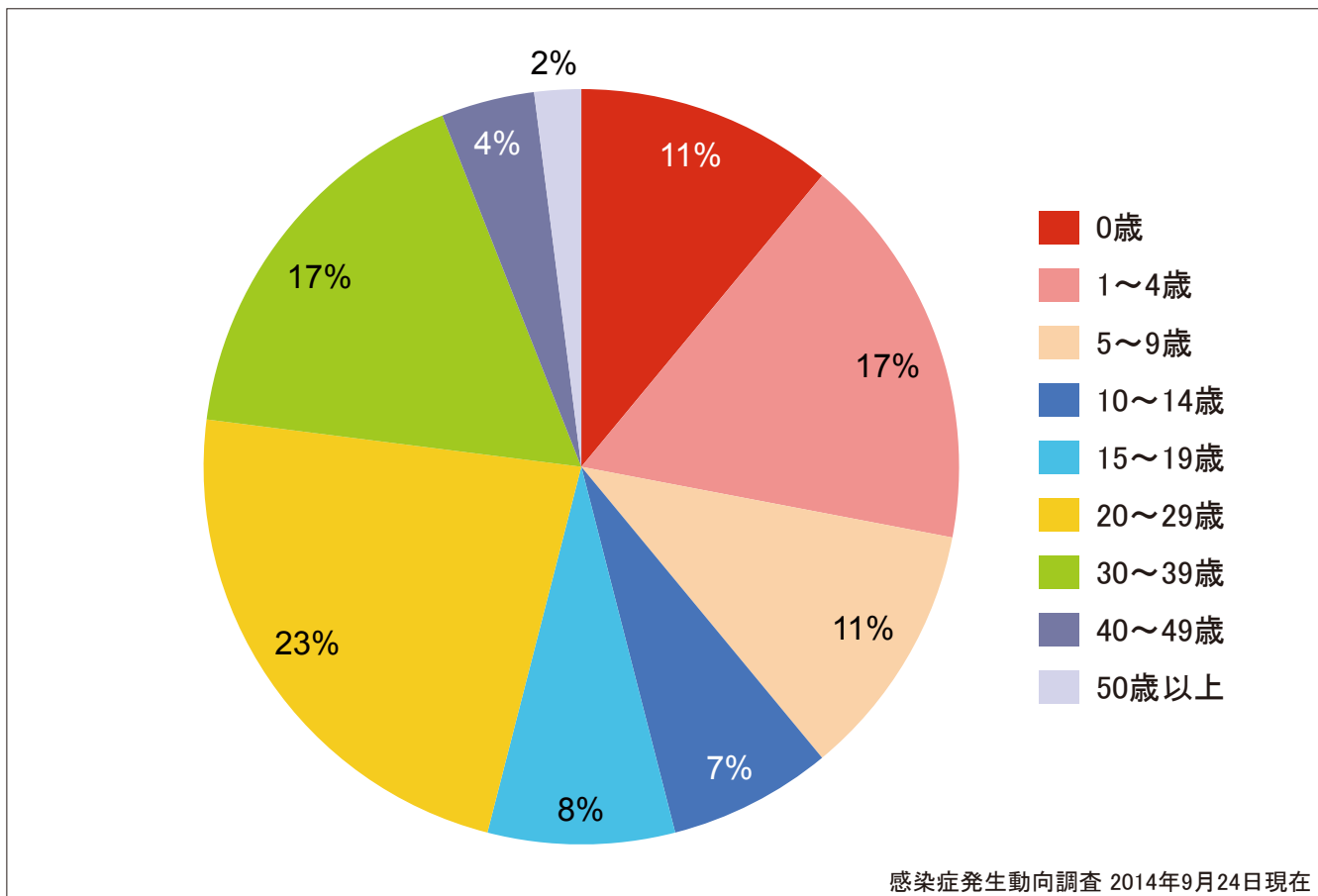
■ Clinically diagnosed ■ Laboratory diagnosed ■ Modified measles, laboratory diagnosed





7. 年齢群別麻疹累積報告数割合 2014年 第1～38週 (n=447)

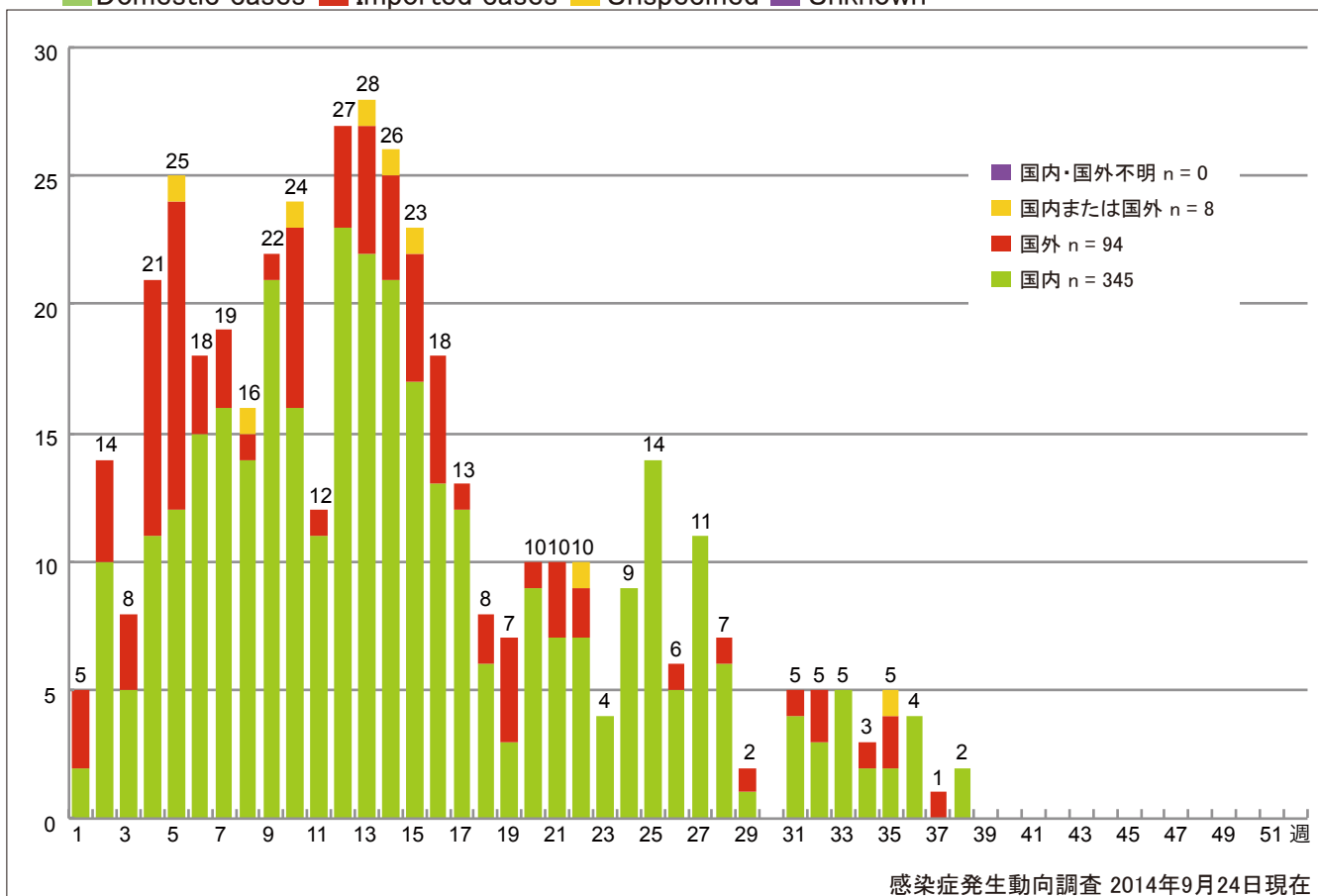
Percentage of cumulative measles cases by age group from week 1 to week 38, 2014 (as of September 24, 2014).



8. 週別推定感染地域(国内・外)別麻疹報告数 2014年 第1～38週 (n=447)

Weekly measles cases by acquired region from week 1 to week 38, 2014 (based on diagnosed week as of September 24, 2014).

Domestic cases Imported cases Unspecified Unknown

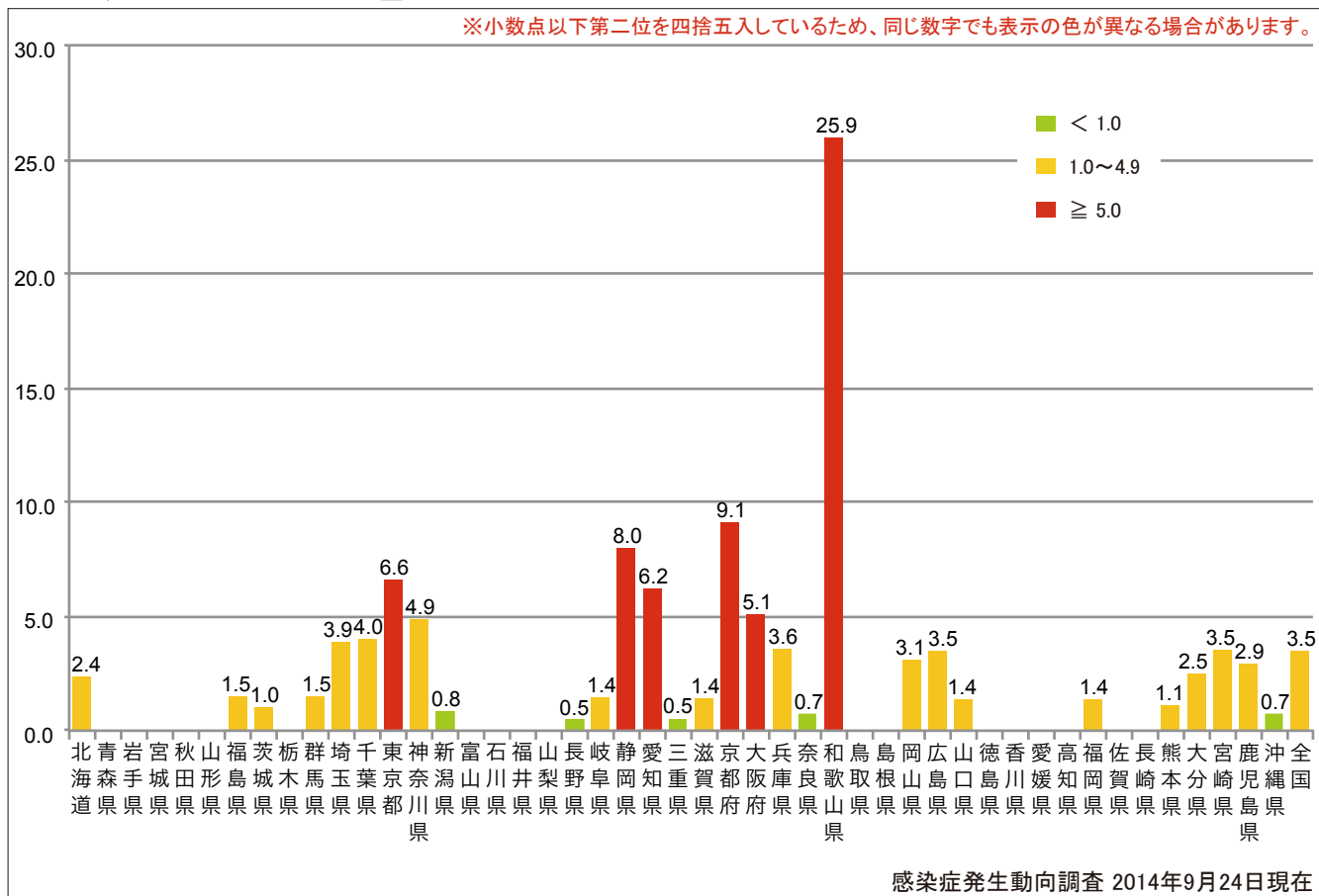


9. 都道府県別人口百万人あたり麻しん報告数 2014年 第1~38週 (n=447)

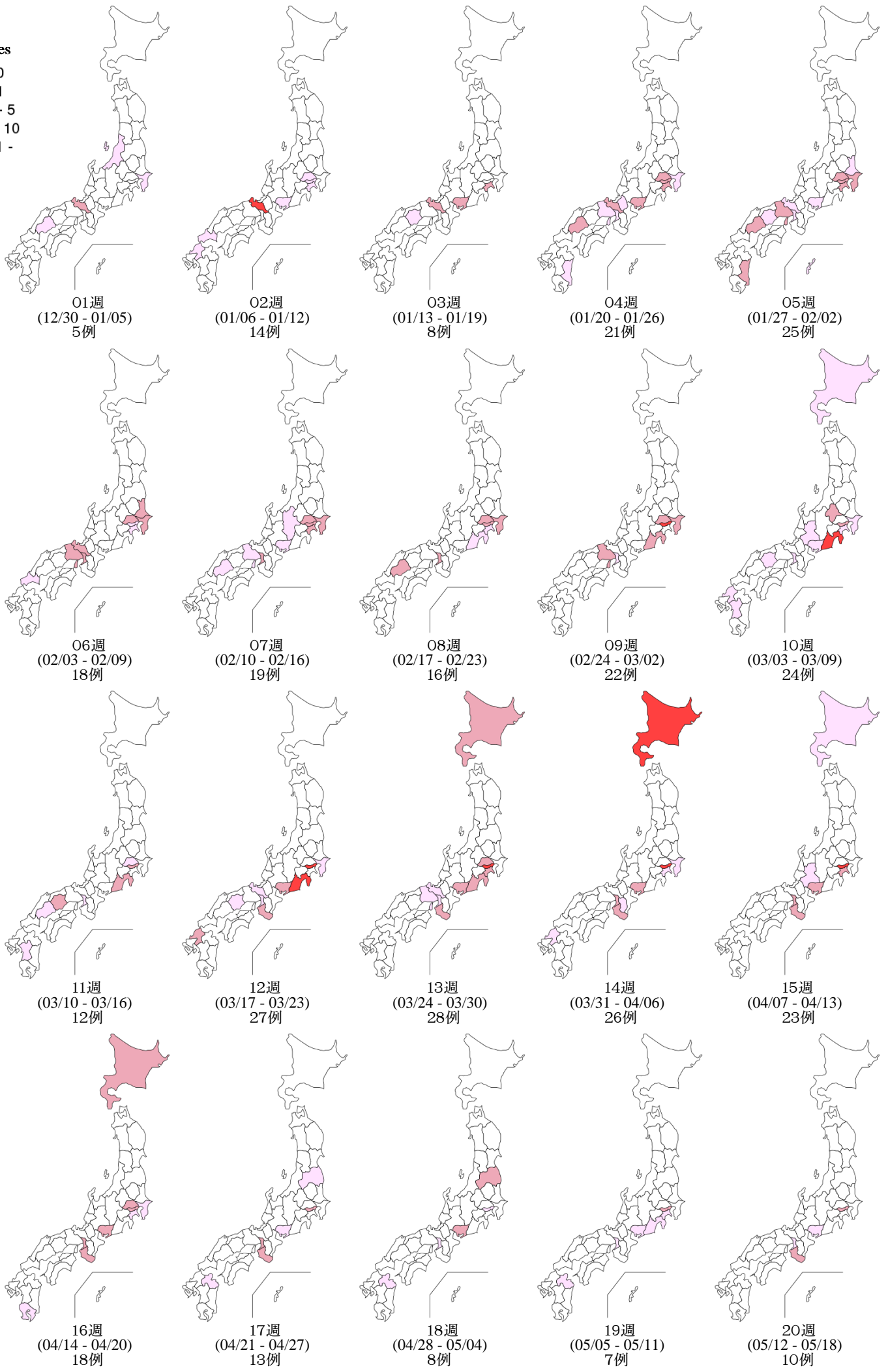
Number of reported cases per 1 million population by prefectures from week 1 to week 38, 2014 (as of September 24, 2014).

■ < 1.0 ■ 1.0~4.9 ■ ≥ 5.0

※小数点以下第二位を四捨五入しているため、同じ数字でも表示の色が異なる場合があります。



Weekly measles cases from week 1 to week 38, 2014 (based on diagnosed week as of September 24, 2014)



10. 都道府県別麻疹週別報告状況 2014年 第1~38週 感染症発生動向調査

2014年09月24日現在

Weekly measles cases from week 1 to week 38, 2014 (based on diagnosed week as of September 24, 2014)

