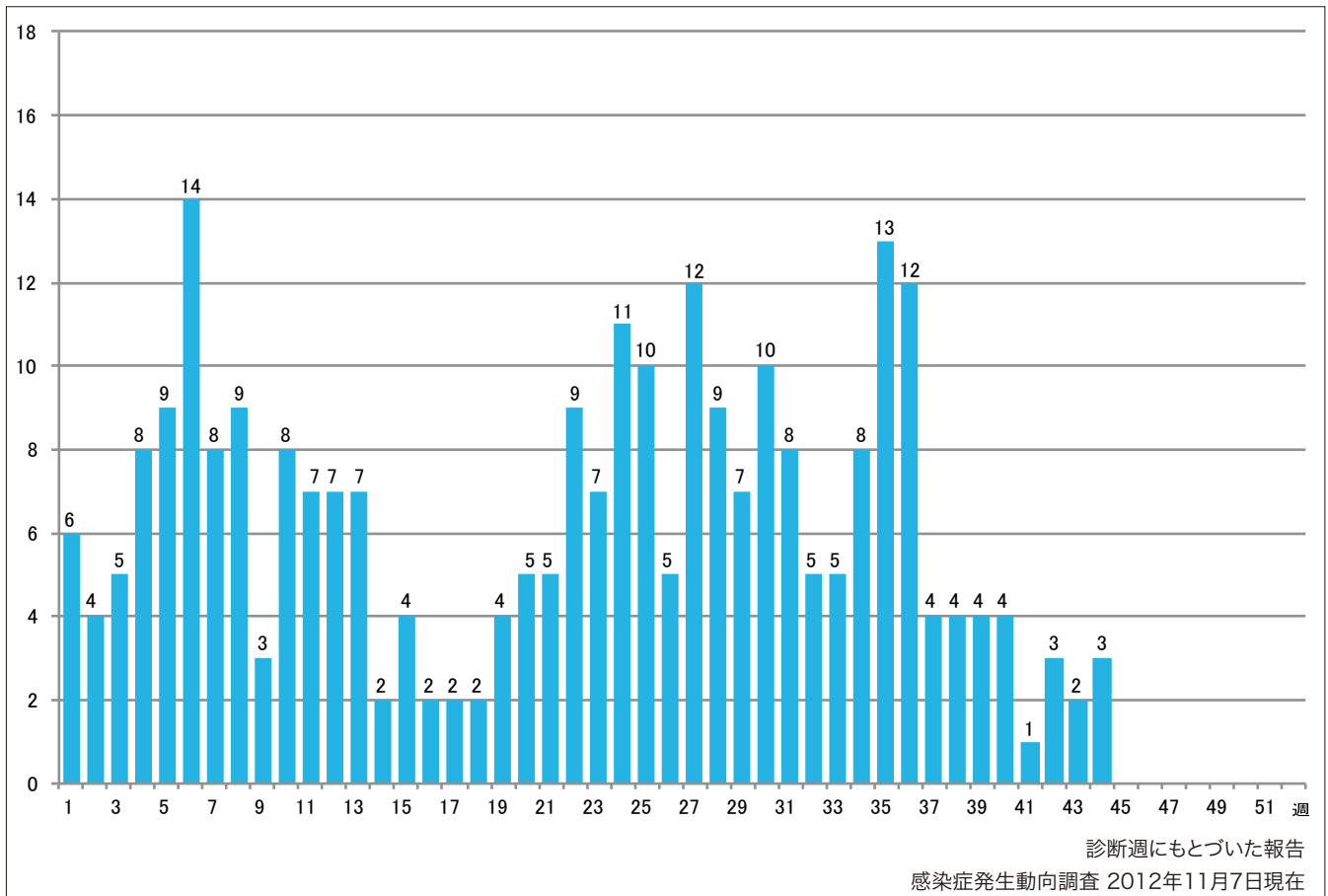


1. 週別麻疹報告数 2012年 第1~44週 (n=277)

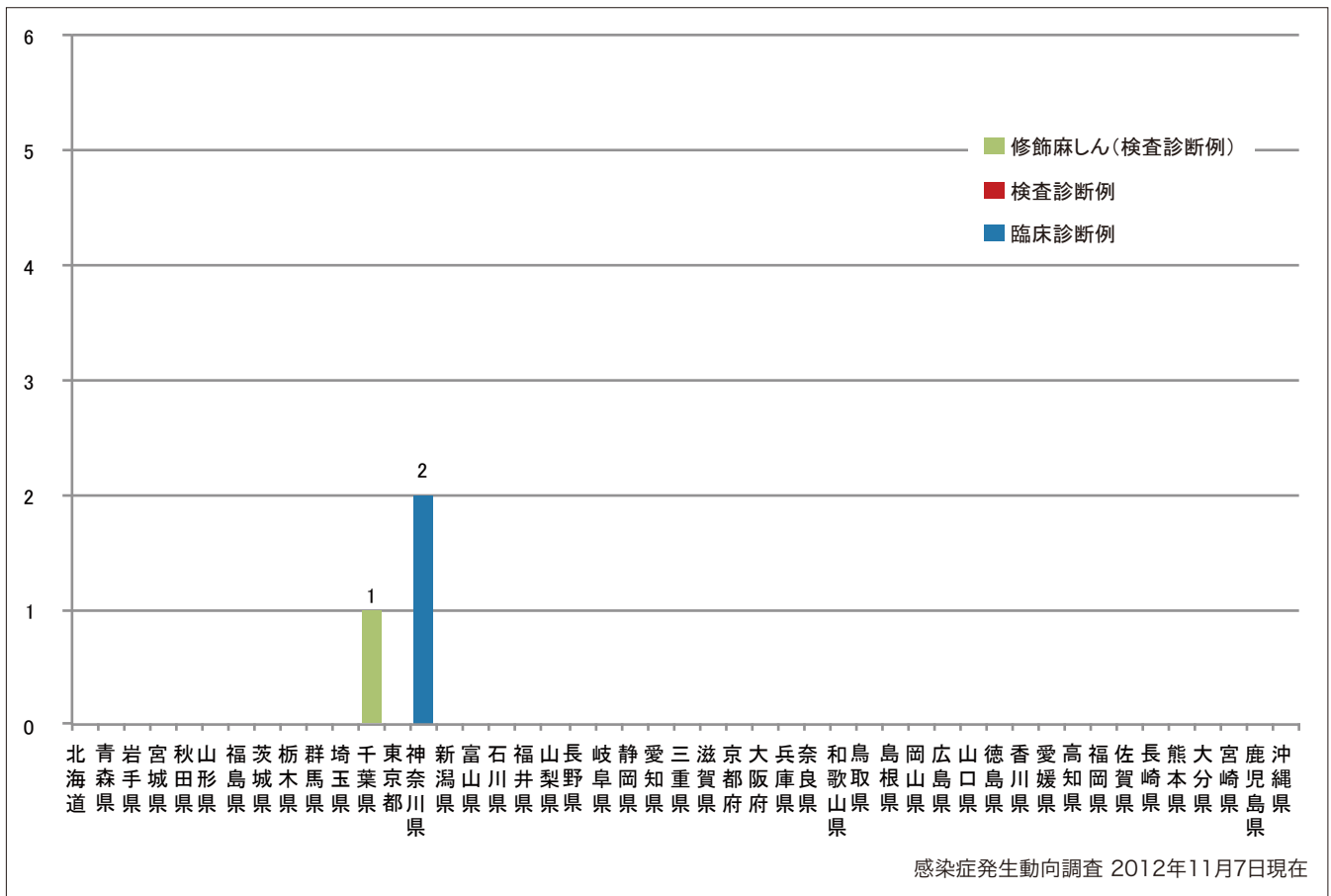
Weekly measles cases from week 1 to week 44 2012 (based on diagnosed week as of November 7, 2012).



2. 都道府県別病型別麻疹報告数2012年 第44週 (n=3)

Reported measles cases by prefecture and methods of diagnosis in week 44, 2012 (as of November 7, 2012).

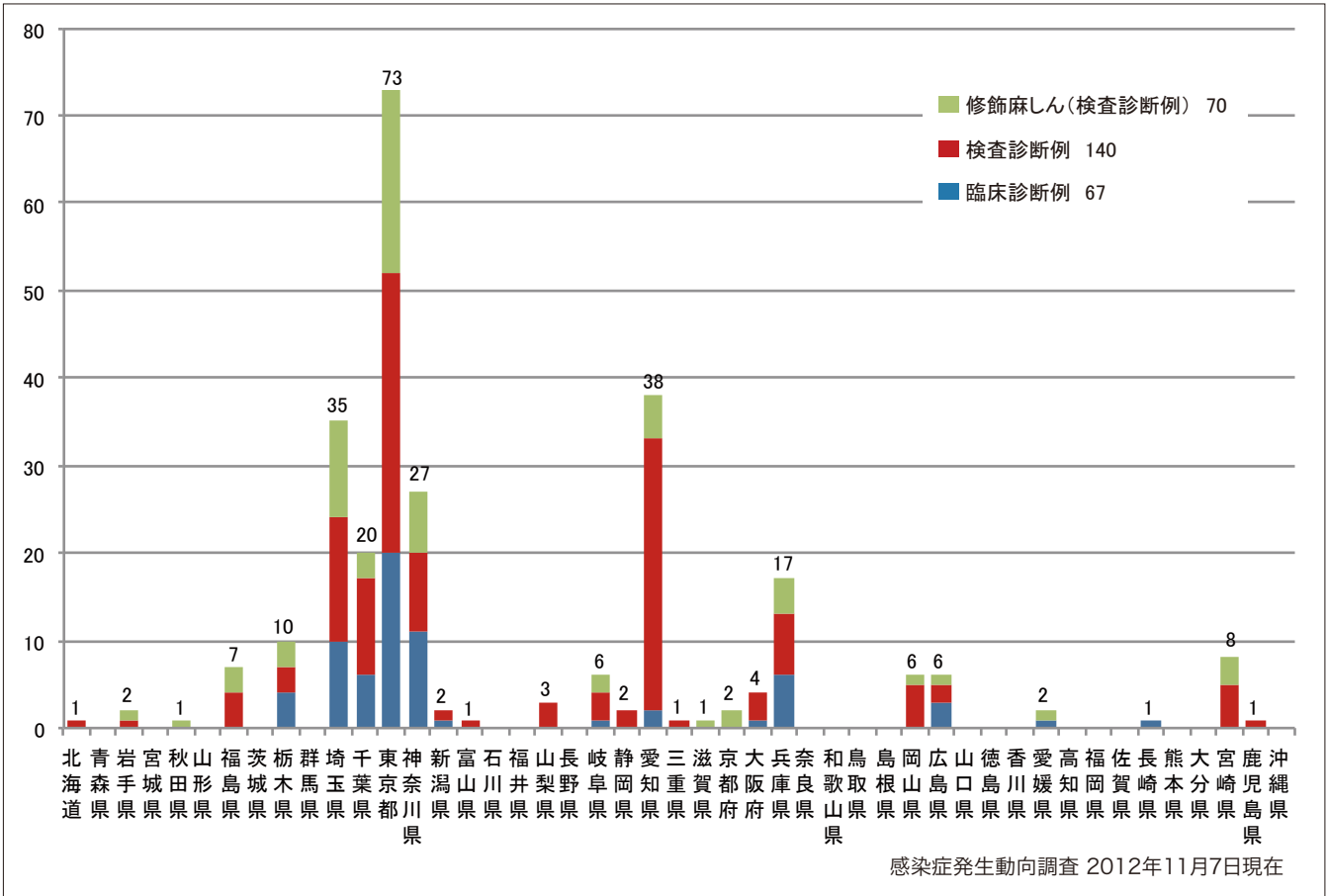
■ Clinically diagnosed ■ Laboratory diagnosed ■ Modified measles, laboratory diagnosed



3. 都道府県別病型別麻疹累積報告数 2012年 第1~44週 (n=277)

Cumulative measles cases by prefecture and methods of diagnosis from week 1 to week 44, 2012 (as of November 7, 2012).

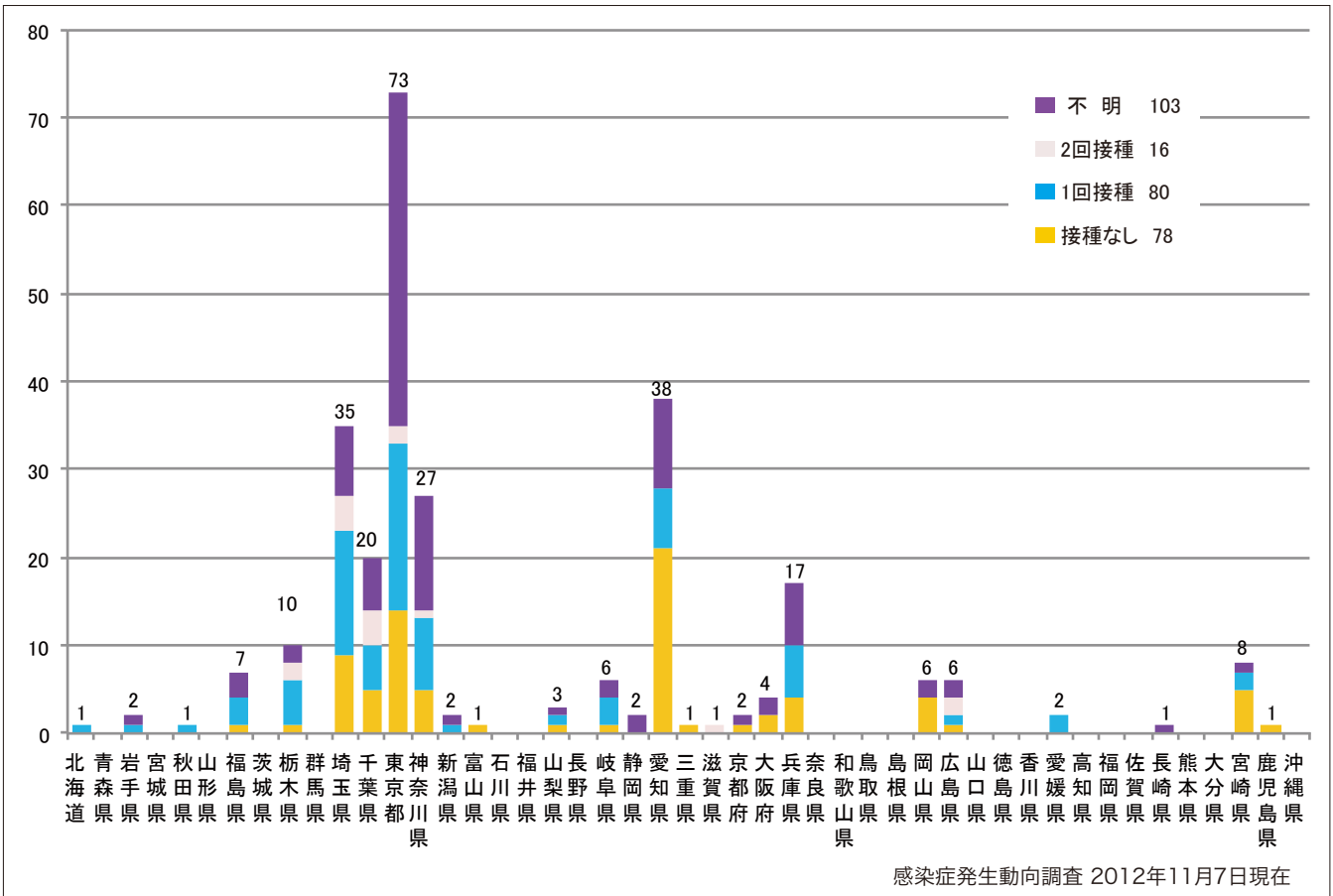
■ Clinically diagnosed ■ Laboratory diagnosed ■ Modified measles, laboratory diagnosed



4. 都道府県別接種歴別麻疹累積報告数 2012年 第1~44週 (n=277)

Cumulative measles cases by prefecture and vaccinated status from week 1 to week 44, 2012 (as of November 7, 2012).

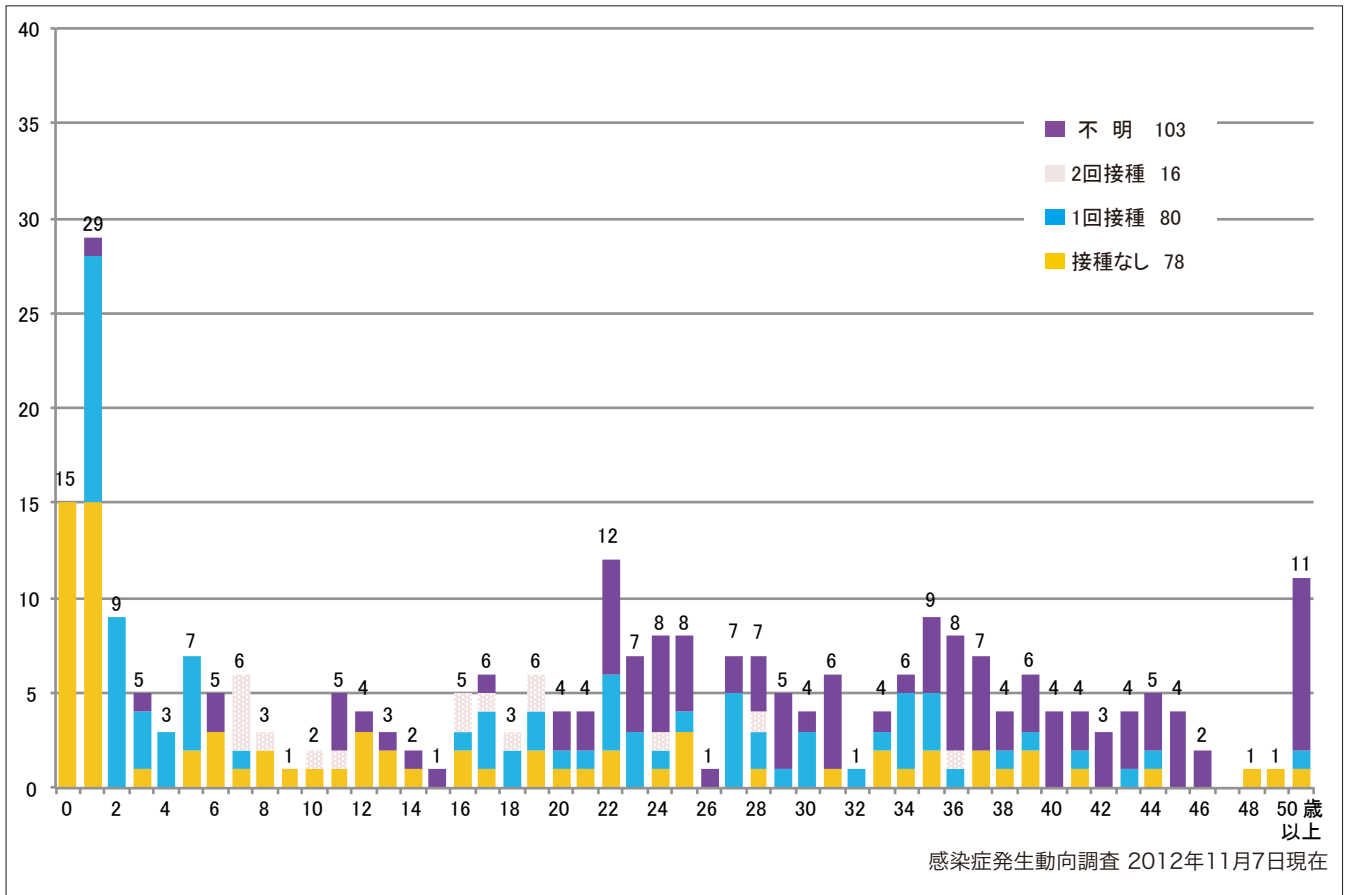
■ None ■ MCV1 ■ MCV2 ■ Unknown



5. 年齢群別接種歴別麻疹累積報告数 2012年 第1~44週 (n=277)

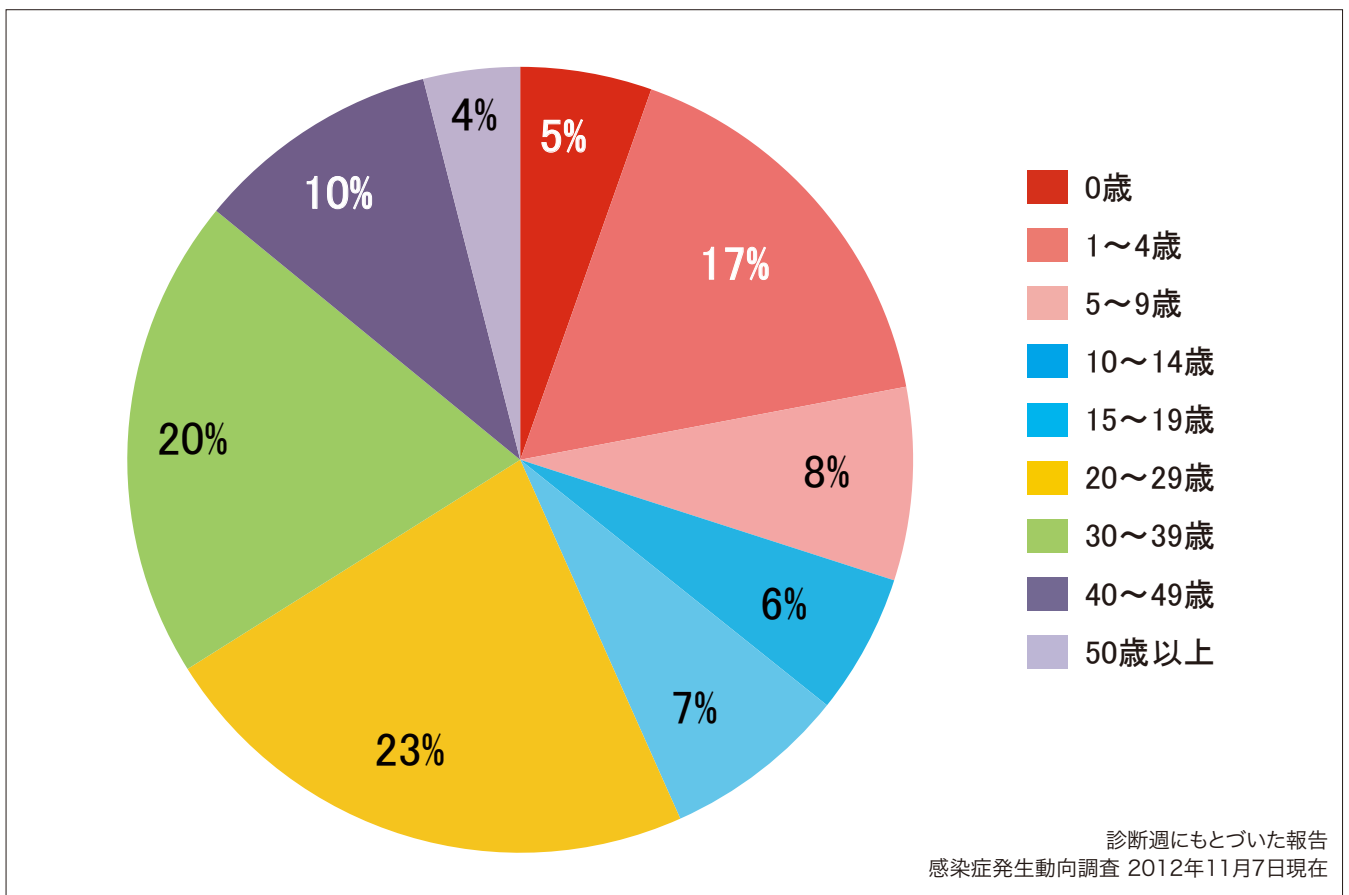
Cumulative measles cases by age and vaccinated status from week 1 to week 44, 2012  
(as of November 7, 2012).

■ None ■ MCV1 ■ MCV2 ■ Unknown



6. 年齢群別麻疹累積報告数割合 2012年 第1~44週 (n=277)

Percentage of cumulative measles cases by age group from week 1 to week 44, 2012  
(as of November 7, 2012).

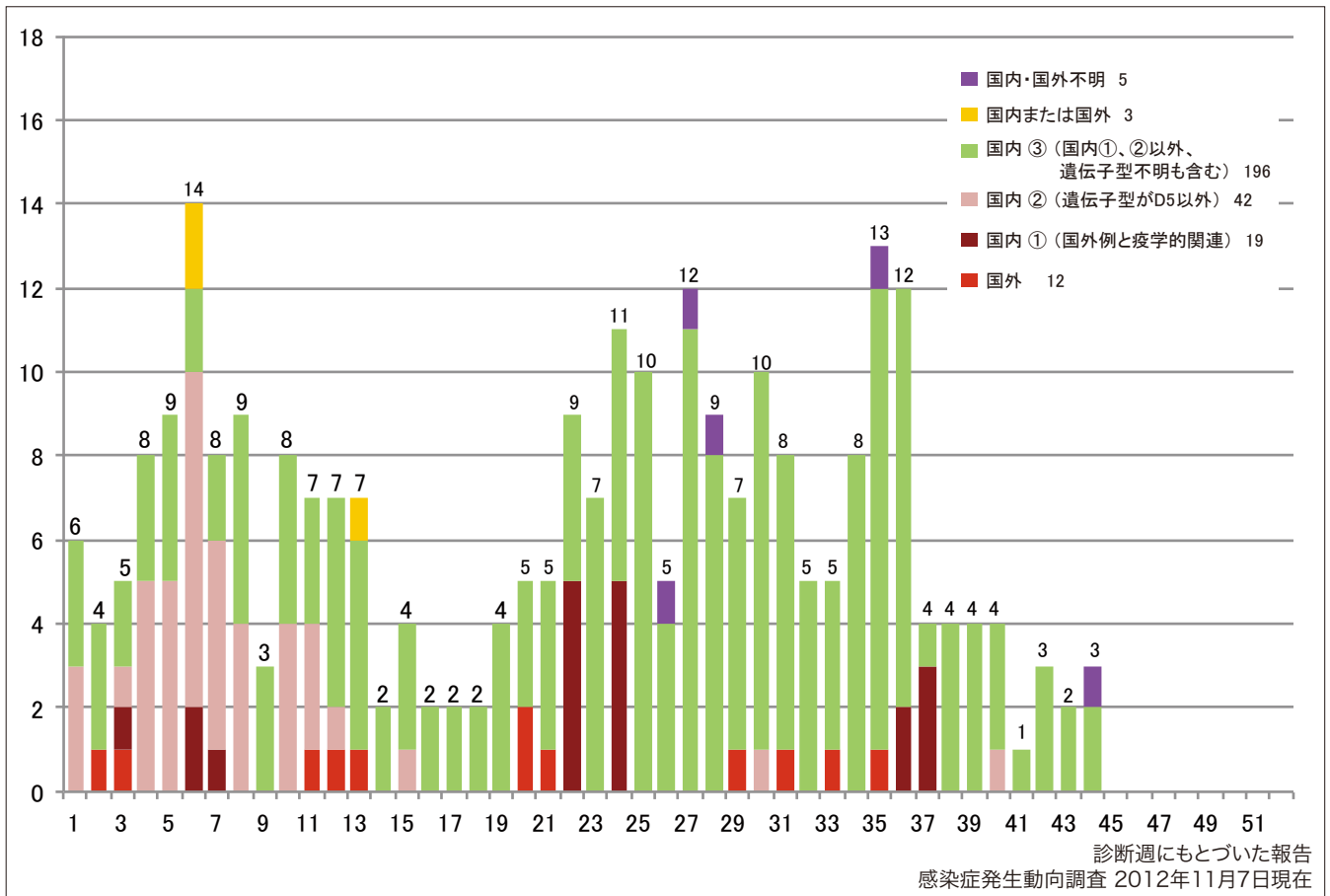


7. 週別推定感染地域（国内・外）別麻疹報告数 2012年 第1～44週（n=277）

Weekly measles cases by acquired region from week 1 to week 44, 2012

(based on diagnosed week as of November 7, 2012).

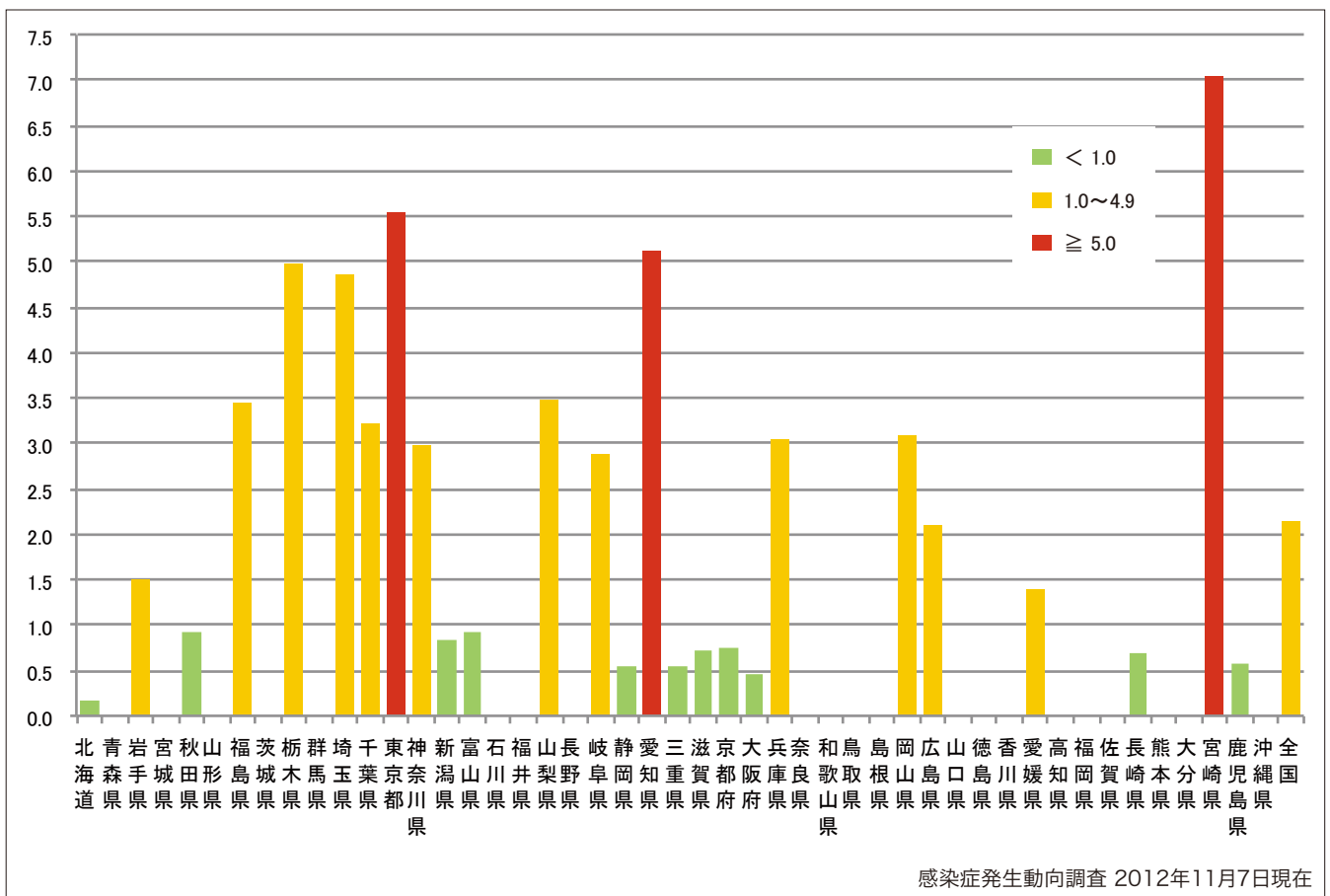
■ Imported cases 
 ■ Domestic cases ① (import-linked cases) 
 ■ Domestic cases ② (Except for genotype D5) 
 ■ Domestic cases ③ (other than ① and ②) 
 ■ Unspecified 
 ■ Unknown



8. 都道府県別人口百万人あたり麻疹報告数 2012年 第1～44週（n=277）

Number of reported cases per 1 million population by prefectures from week 1 to week 44, 2012 (as of November 7, 2012).

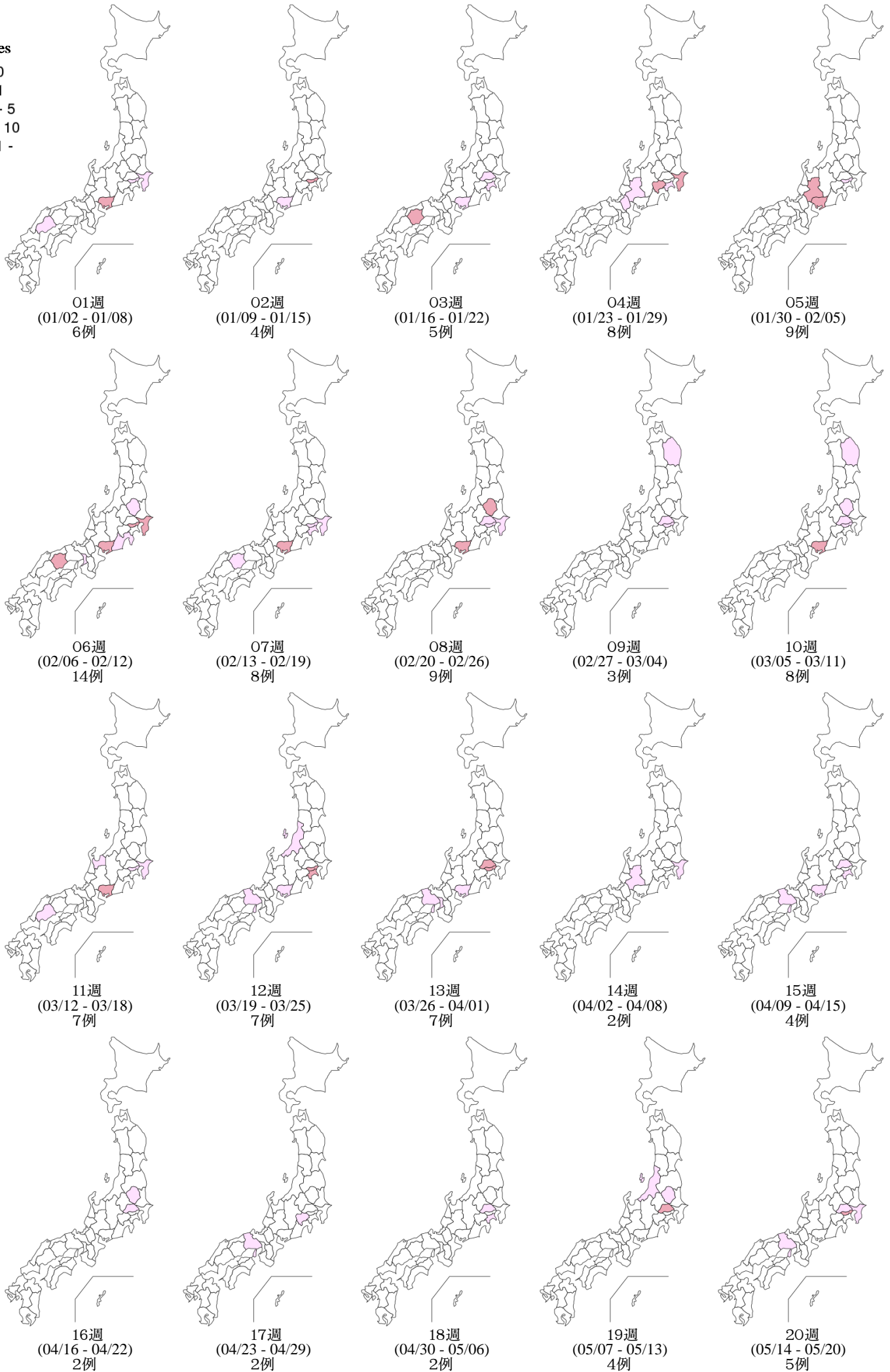
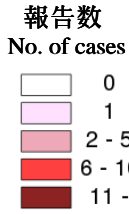
■ < 1.0 
 ■ 1.0~4.9 
 ■ ≥ 5.0



9. 都道府県別麻疹週別報告状況 2012年 第1~44週 感染症発生動向調査

2012年11月07日現在

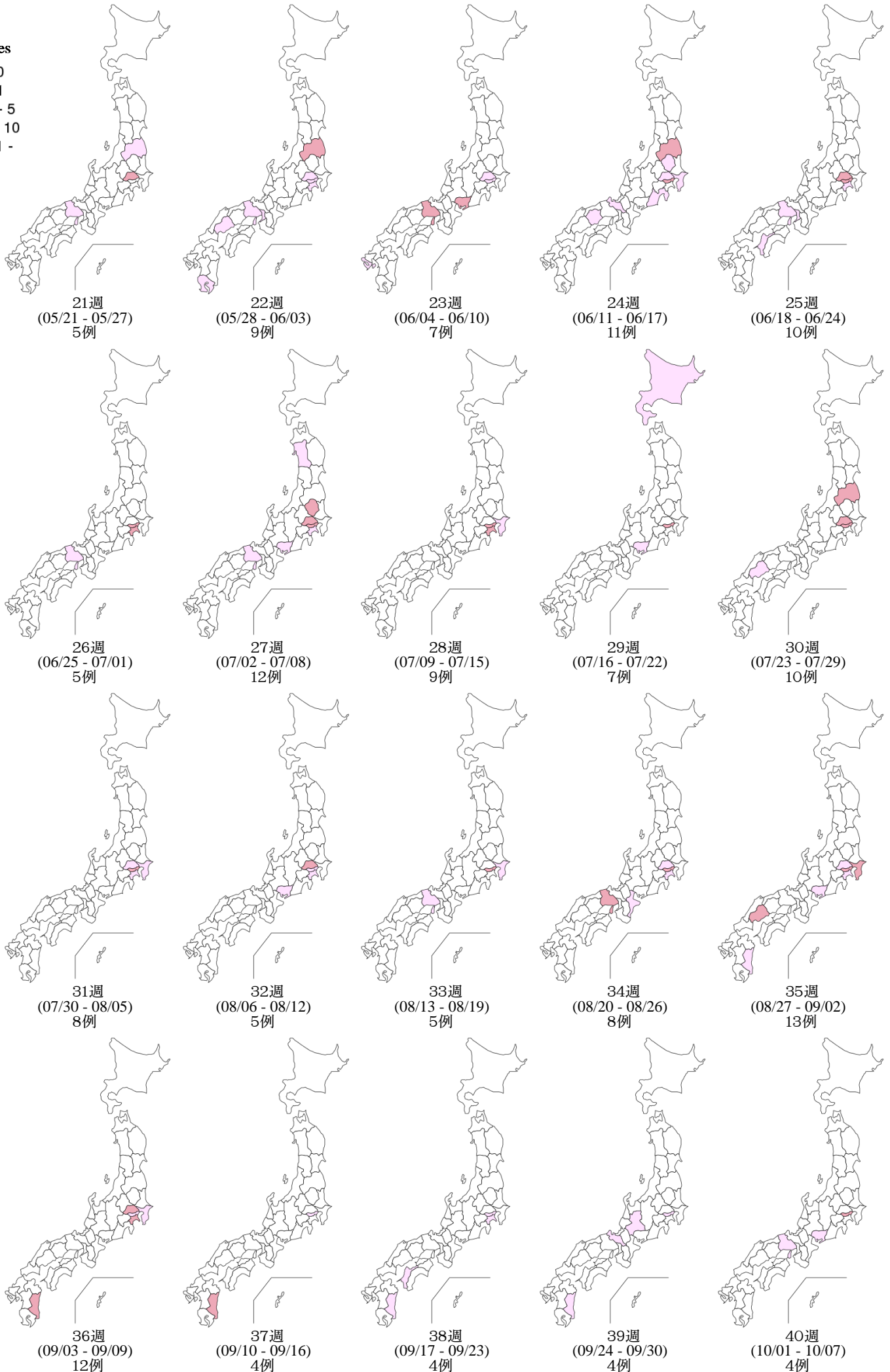
Weekly measles cases from week 1 to week 44, 2012 (based on diagnosed week as of November 07, 2012)



9. 都道府県別麻疹週別報告状況 2012年 第1~44週 感染症発生動向調査

2012年11月07日現在

Weekly measles cases from week 1 to week 44, 2012 (based on diagnosed week as of November 07, 2012)



Weekly measles cases from week 1 to week 44, 2012 (based on diagnosed week as of November 07, 2012)

報告数  
No. of cases

