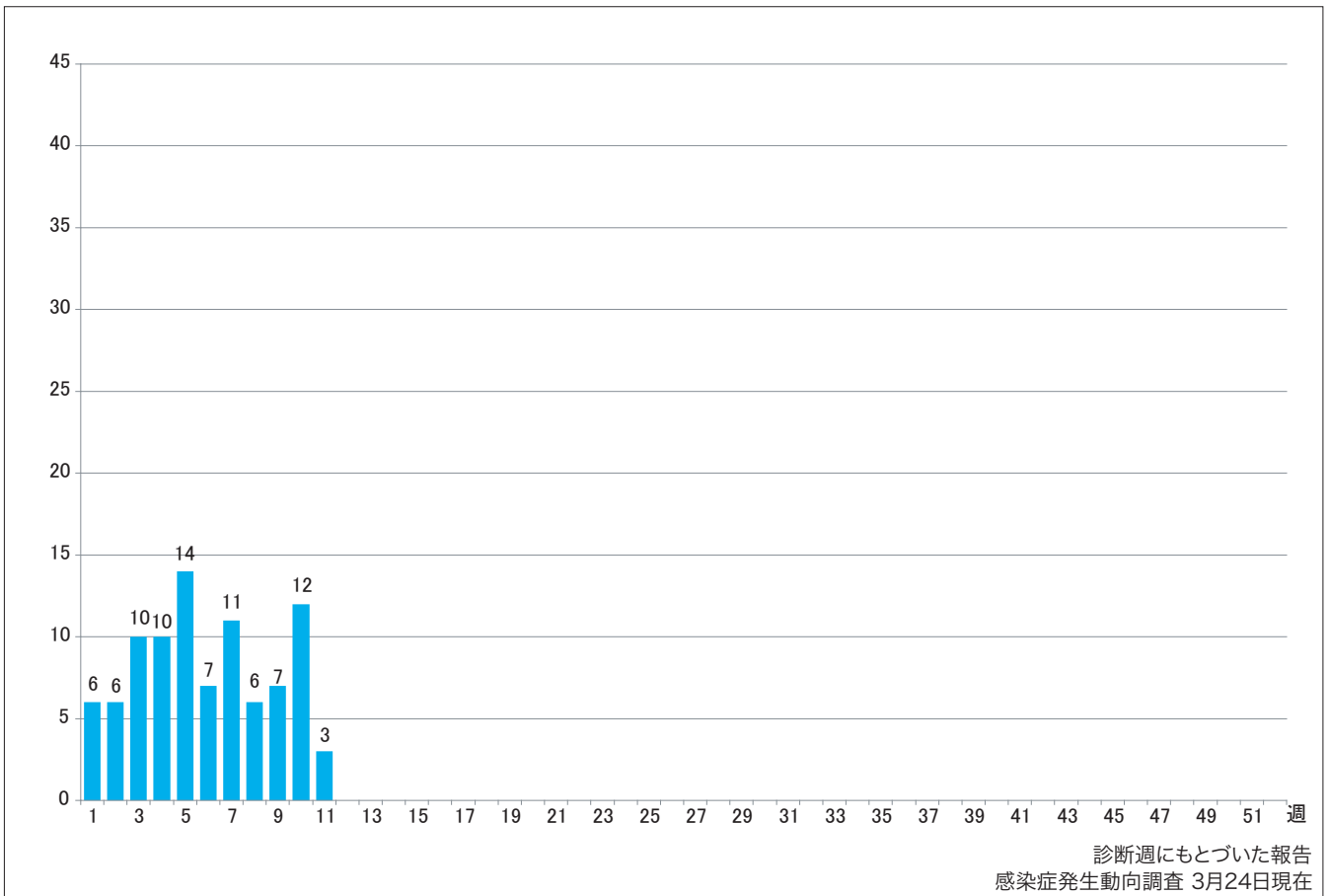


1. 週別麻疹報告数 2010年第1週-11週 (n=92)

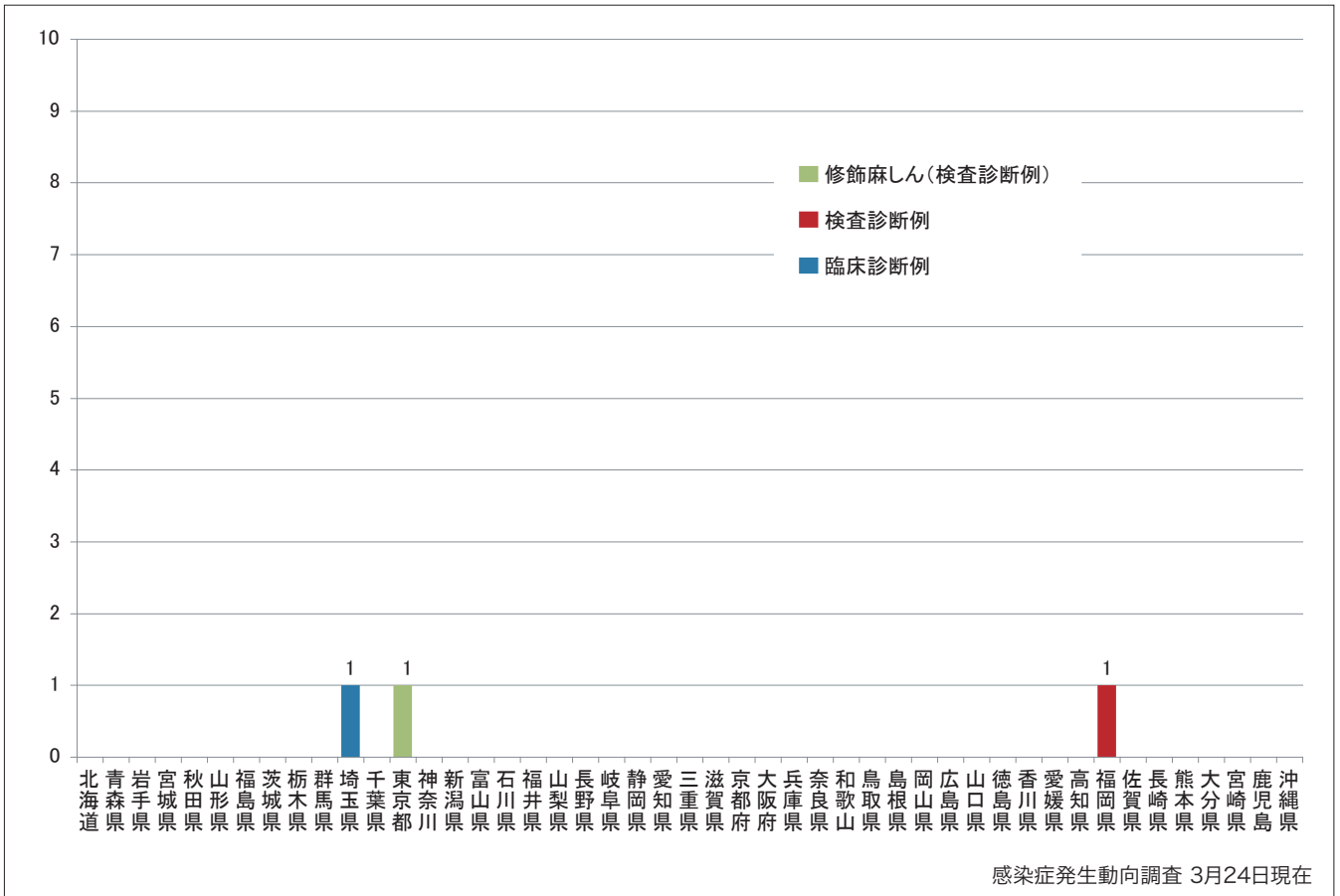
Weekly measles cases from week 1 to week 11 in 2010 (based on diagnosed week as of March 24).



2. 都道府県別病型別麻疹報告数2010年第11週 (n=3)

Reported measles cases by prefecture and methods of diagnosis in week 11, 2010 (as of March 24).

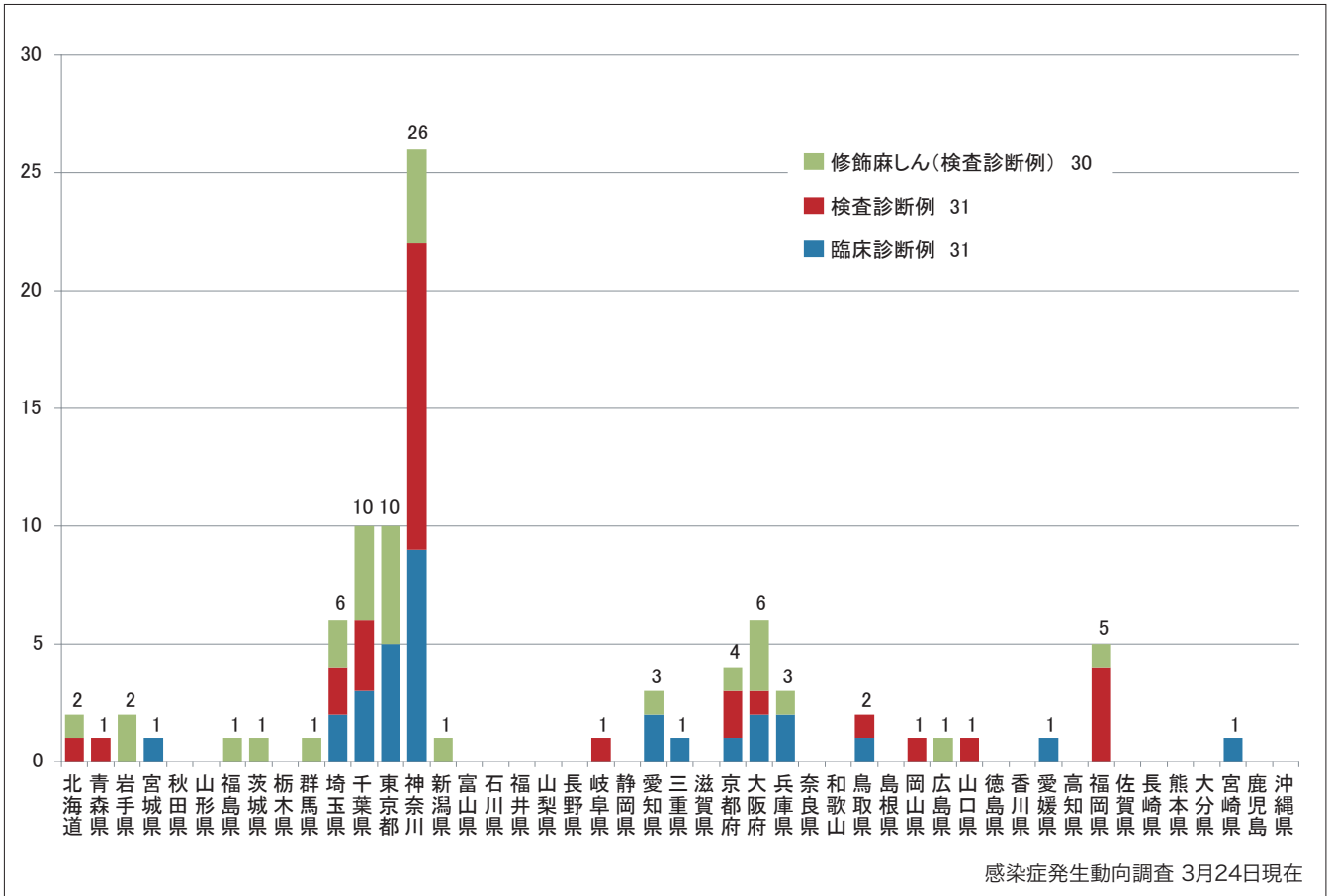
■ Clinically diagnosed ■ Laboratory diagnosed ■ Modified measles, laboratory diagnosed



3. 都道府県別病型別麻疹累積報告数 2010年第1週-11週 (n=92)

Cumulative measles cases by prefecture and methods of diagnosis from week 1 to week 11, 2010 (as of March 24).

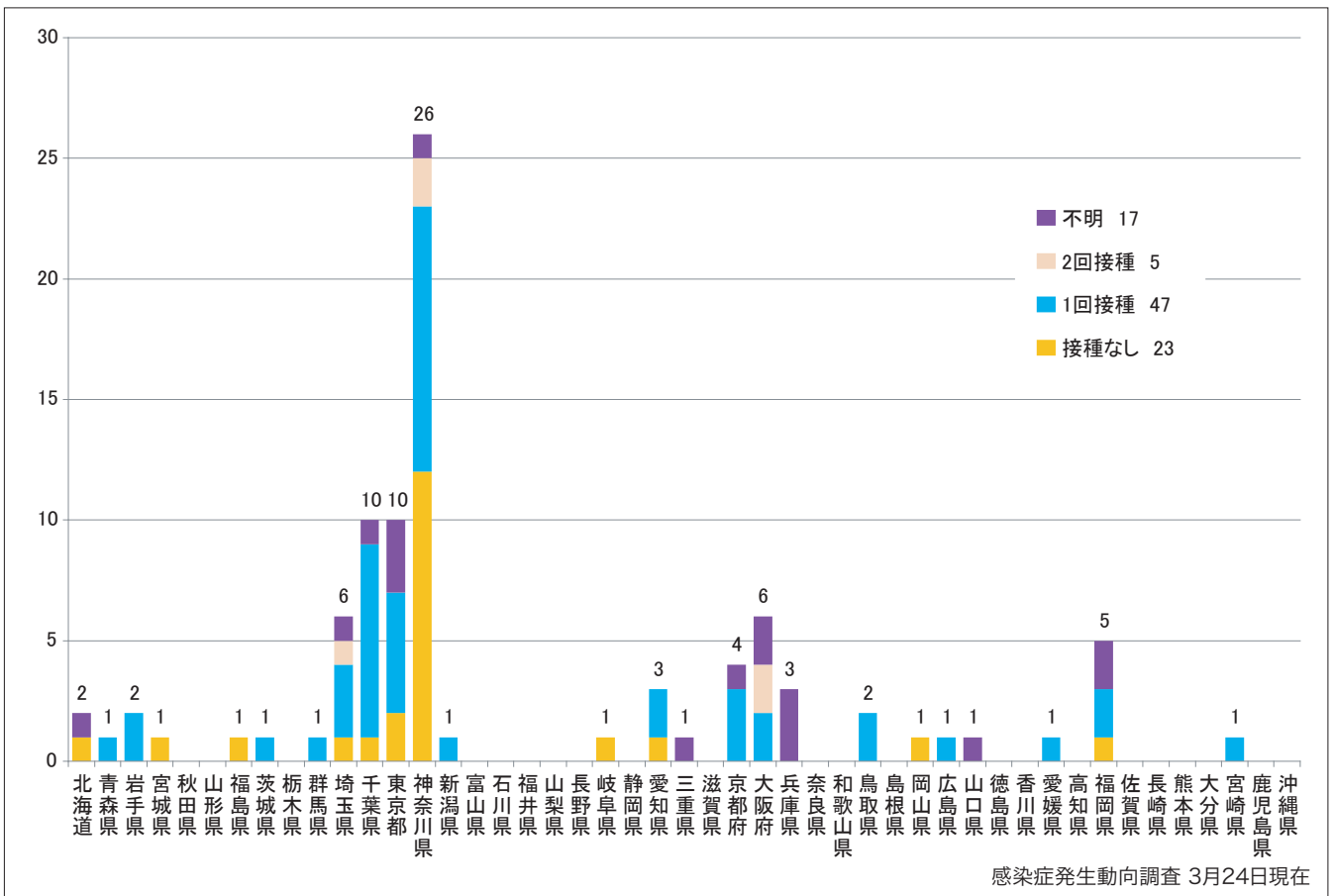
■ Clinically diagnosed ■ Laboratory diagnosed ■ Modified measles, laboratory diagnosed



4. 都道府県別接種歴別麻疹累積報告数 2010年第1週-11週 (n=92)

Cumulative measles cases by prefecture and vaccinated status from week 1 to week 11, 2010 (as of March 24).

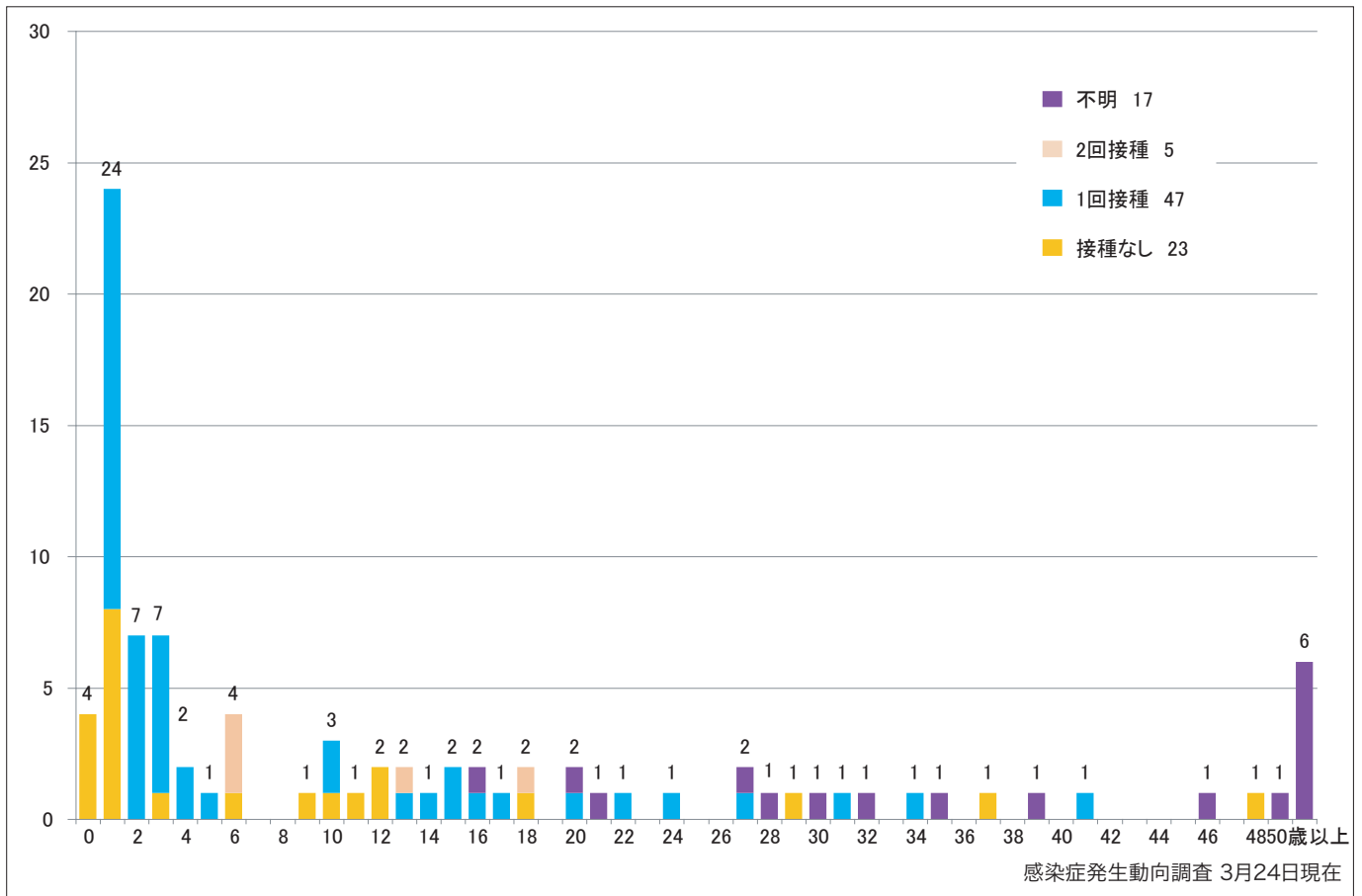
■ None ■ MCV1 ■ MCV2 ■ Unknown



5. 年齢群別接種歴別麻疹累積報告数 2010年第1週-11週 (n=92)

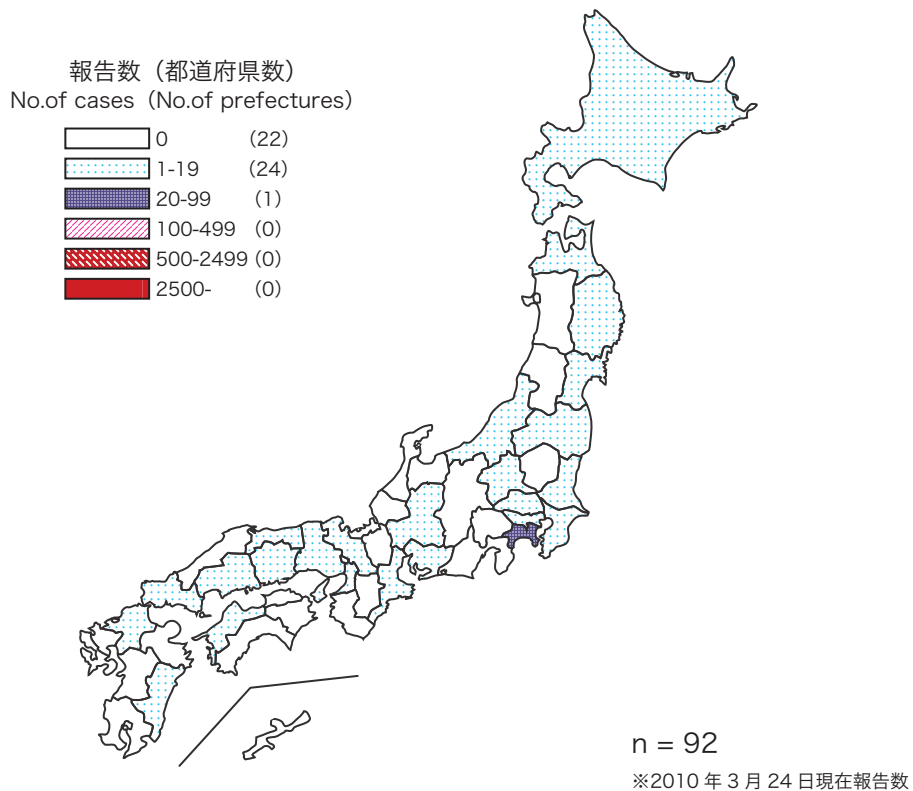
Cumulative measles cases by age and vaccinated status from week 1 to week 11, 2010 (as of March 24).

None MCV1 MCV2 Unknown



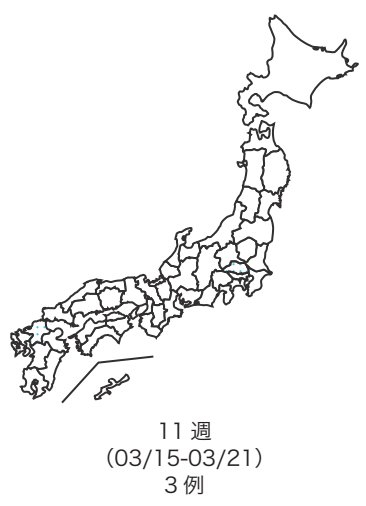
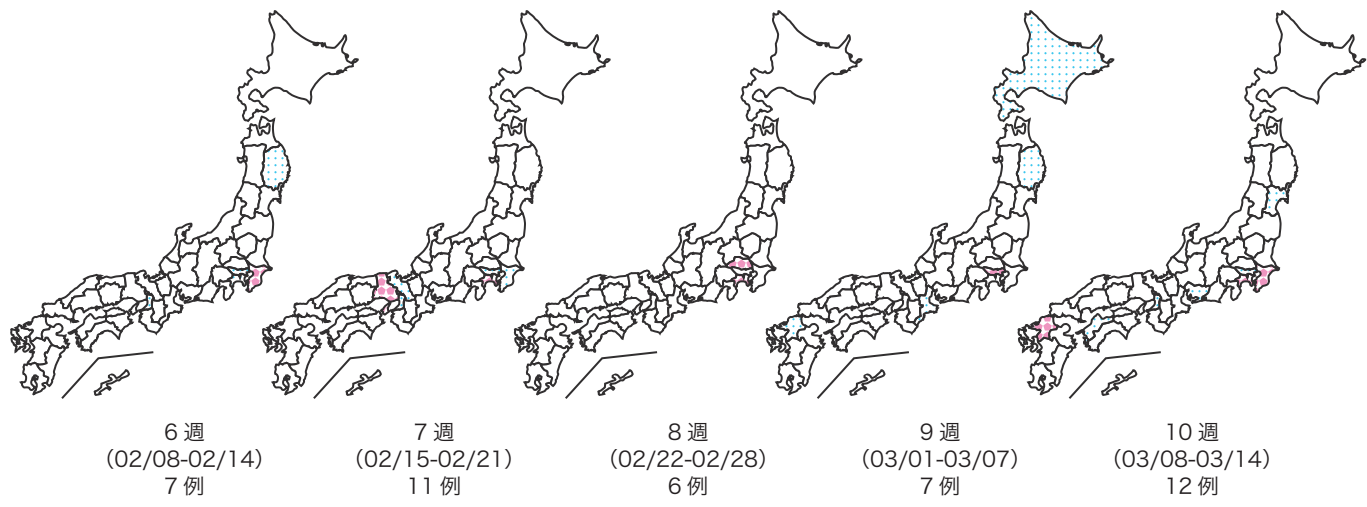
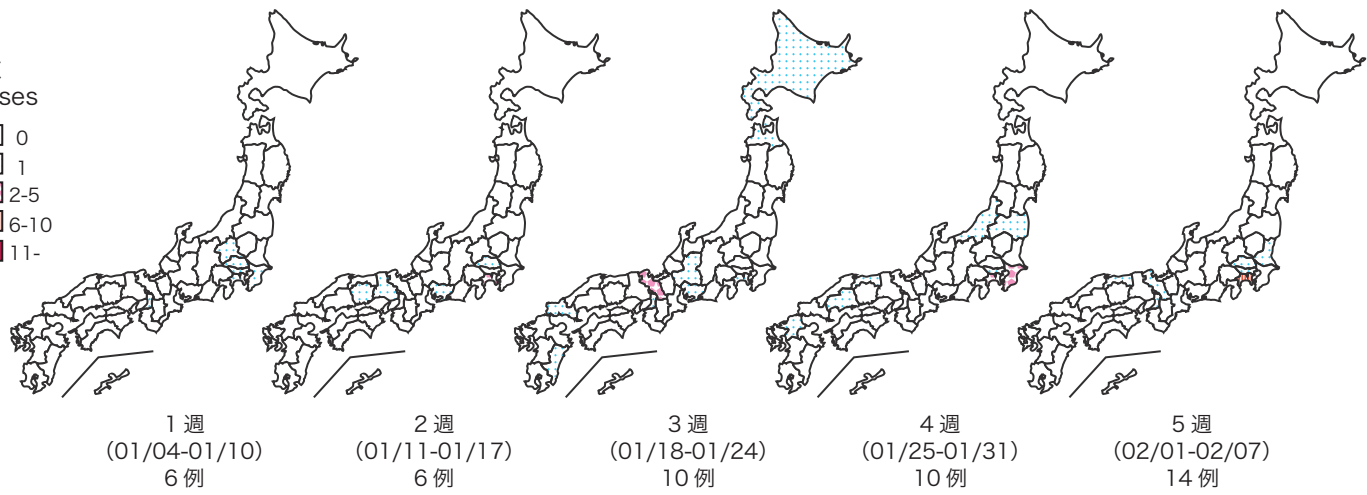
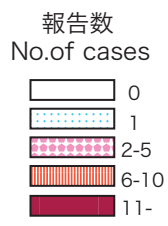
6. 都道府県別麻疹累積報告状況、2010年第1週-11週 感染症発生動向調査

Cumulative measles cases by prefecture from week 1 to week 11, 2010 (as of March 24)



7. 都道府県別麻疹週別報告状況 2010年第1週-11週 感染症発生動向調査

Weekly measles cases from week 1 to week 11, 2010 (based on diagnosed week as of March 24)



※2010年3月24日現在報告数