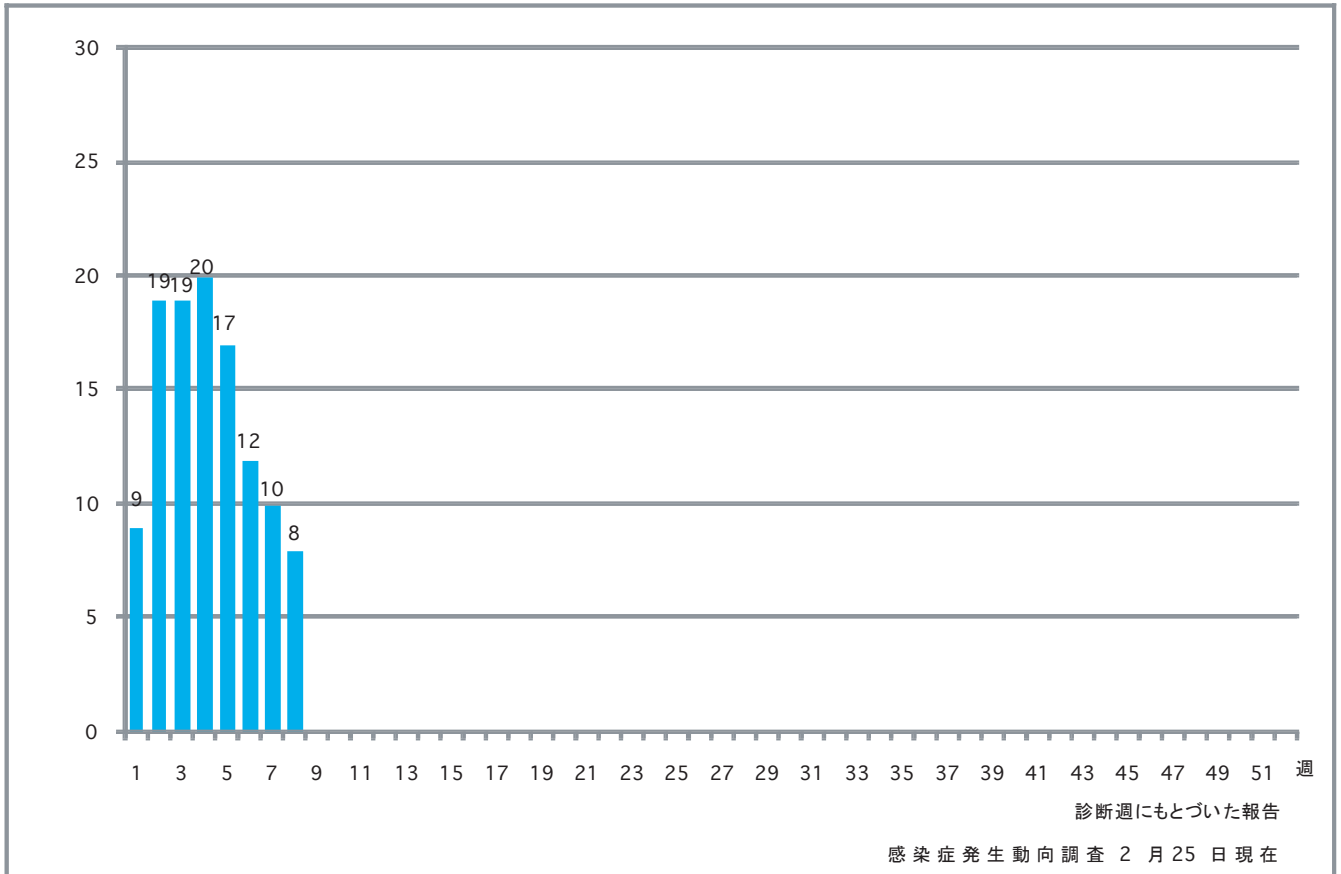


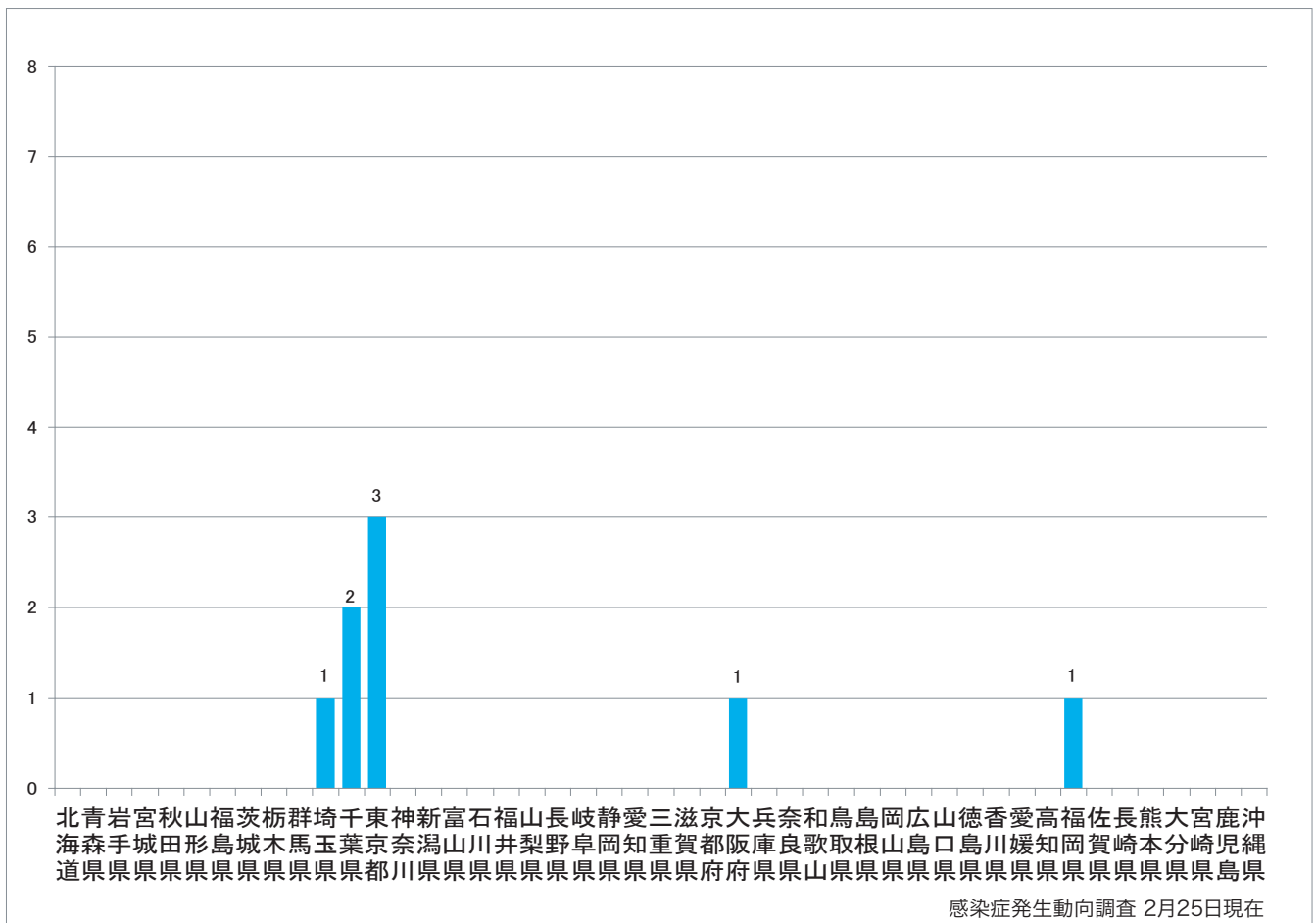
1. 週別麻疹報告数 2009年第1週-8週 (n=114)

Weekly measles cases from week 1 to week 8 in 2009 (based on diagnosed week as of February 25).



2. 都道府県別麻疹報告数2009年第8週 (n=8)

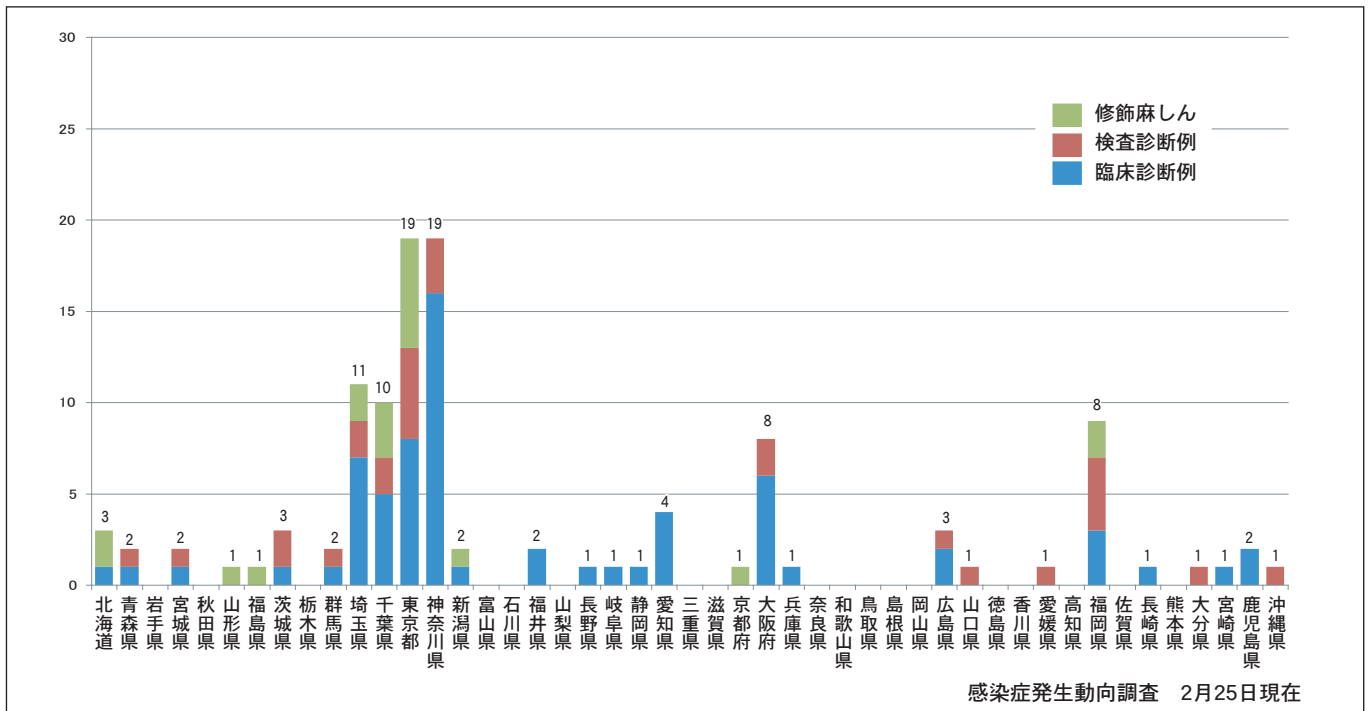
Reported measles cases by prefecture in week 8, 2009 (as of February 25).



3. 都道府県別病型別麻疹累積報告数 2009年第1週-8週 (n=114)

Cumulative measles cases by prefecture and methods of diagnosis from week 1 to week 8, 2009 (as of February 25).

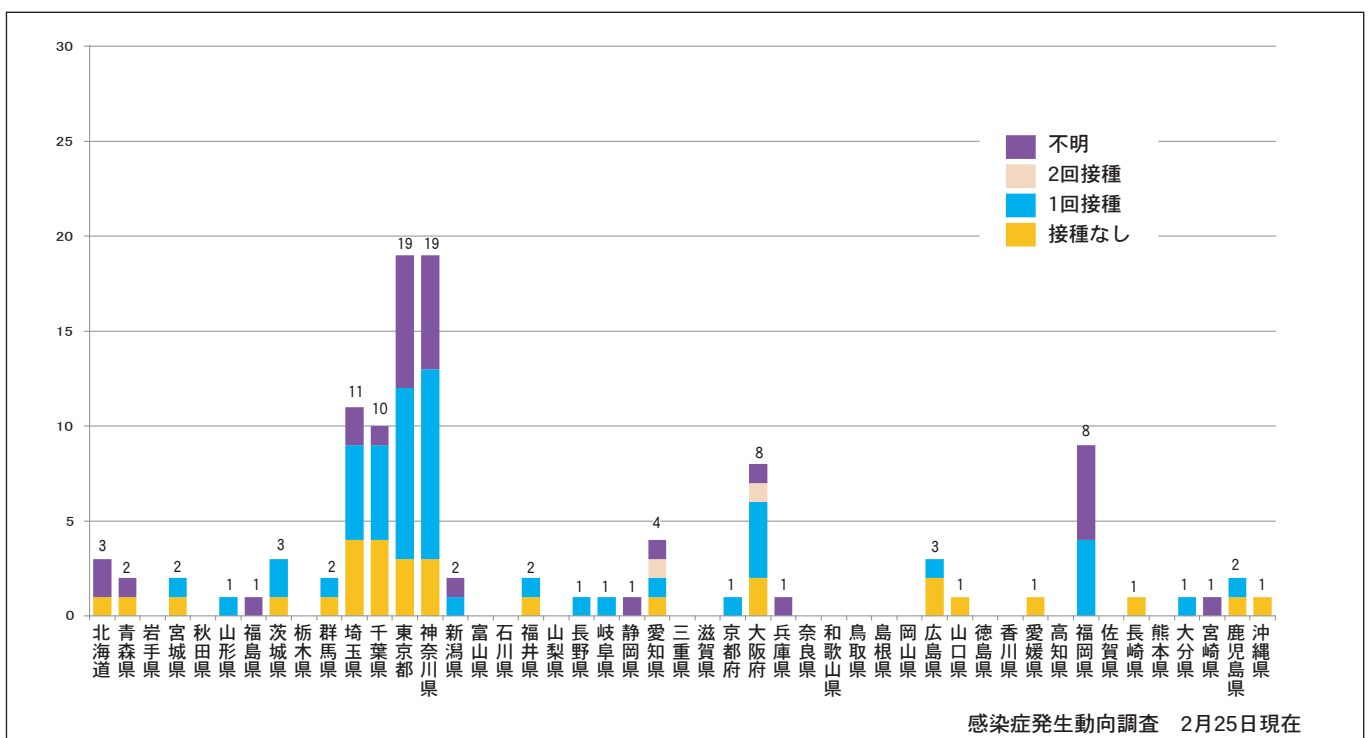
■ Clinically diagnosed ■ Laboratory diagnosed ■ Modified measles, laboratory diagnosed



4. 都道府県別接種歴別麻疹累積報告数 2009年第1週-8週 (n=114)

Cumulative measles cases by prefecture and vaccinated status from week 1 to week 8, 2009 (as of February 25).

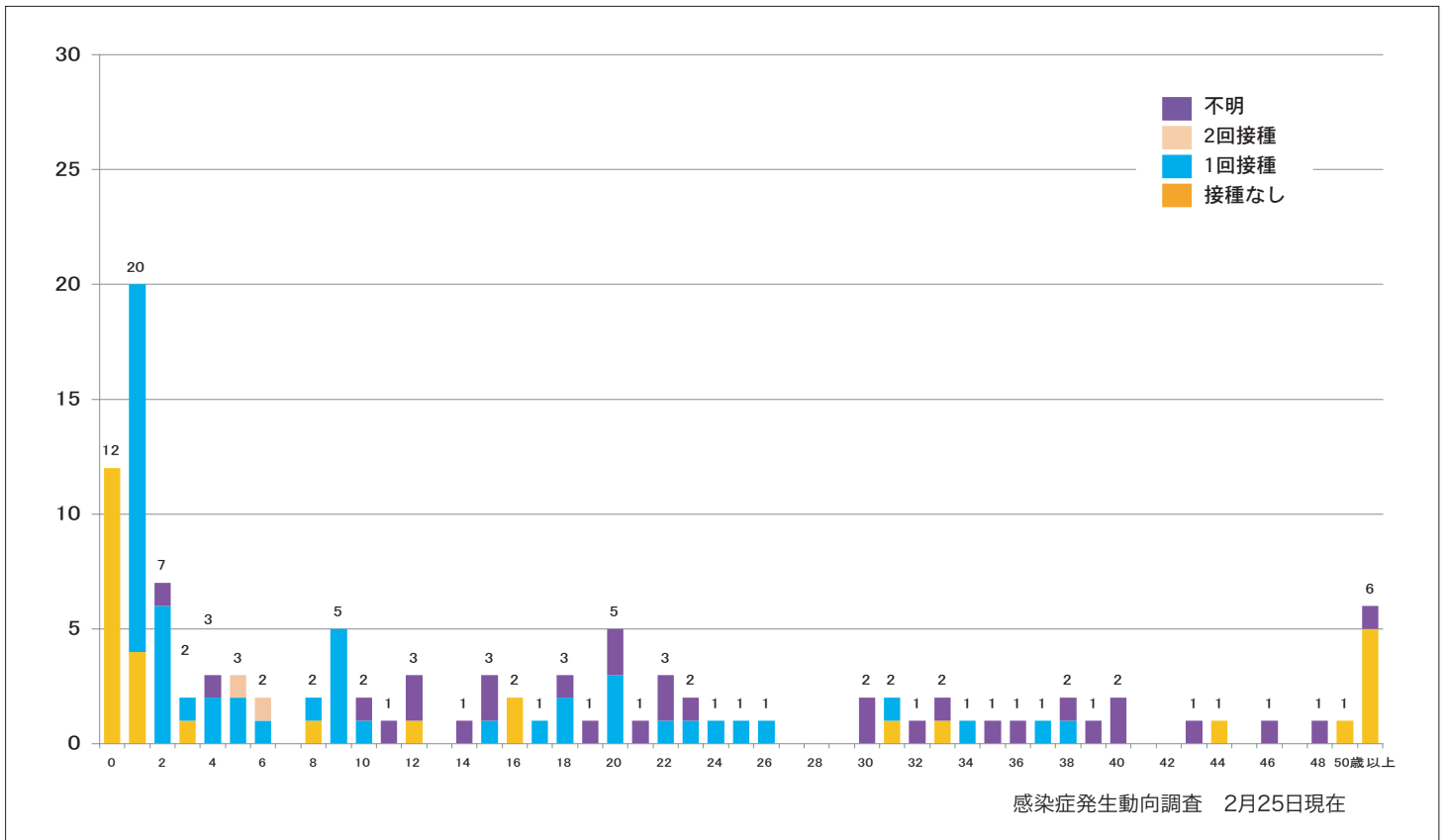
■ None ■ MCV1 ■ MCV2 ■ Unknown



5. 年齢群別接種歴別麻疹累積報告数 2009年第1週-8週 (n=114)

Cumulative measles cases by age and vaccinated status from week 1 to week 8, 2009
(as of February 25).

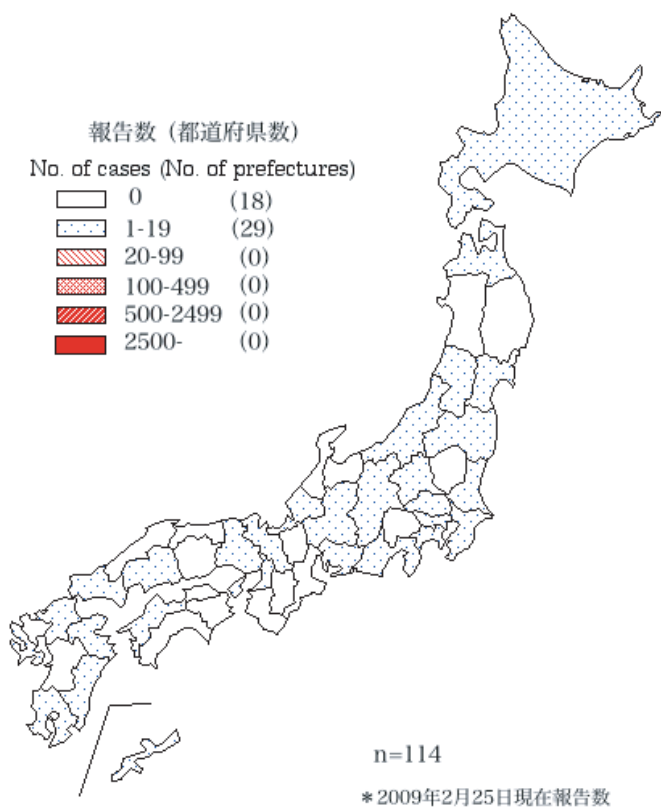
None MCV1 MCV2 Unknown



6. 都道府県別麻疹累積報告状況、2009年第1週－8週

感染症発生動向調査

Cumulative measles cases by prefecture from week 1 to week 8, 2009 (as of February 25)



7. 都道府県別麻疹週別報告状況2009年 2009年第1週－8週 感染症発生動向調査

Weekly measles cases from week 1 to week 8, 2009 (based on diagnosed week as of February 25)

