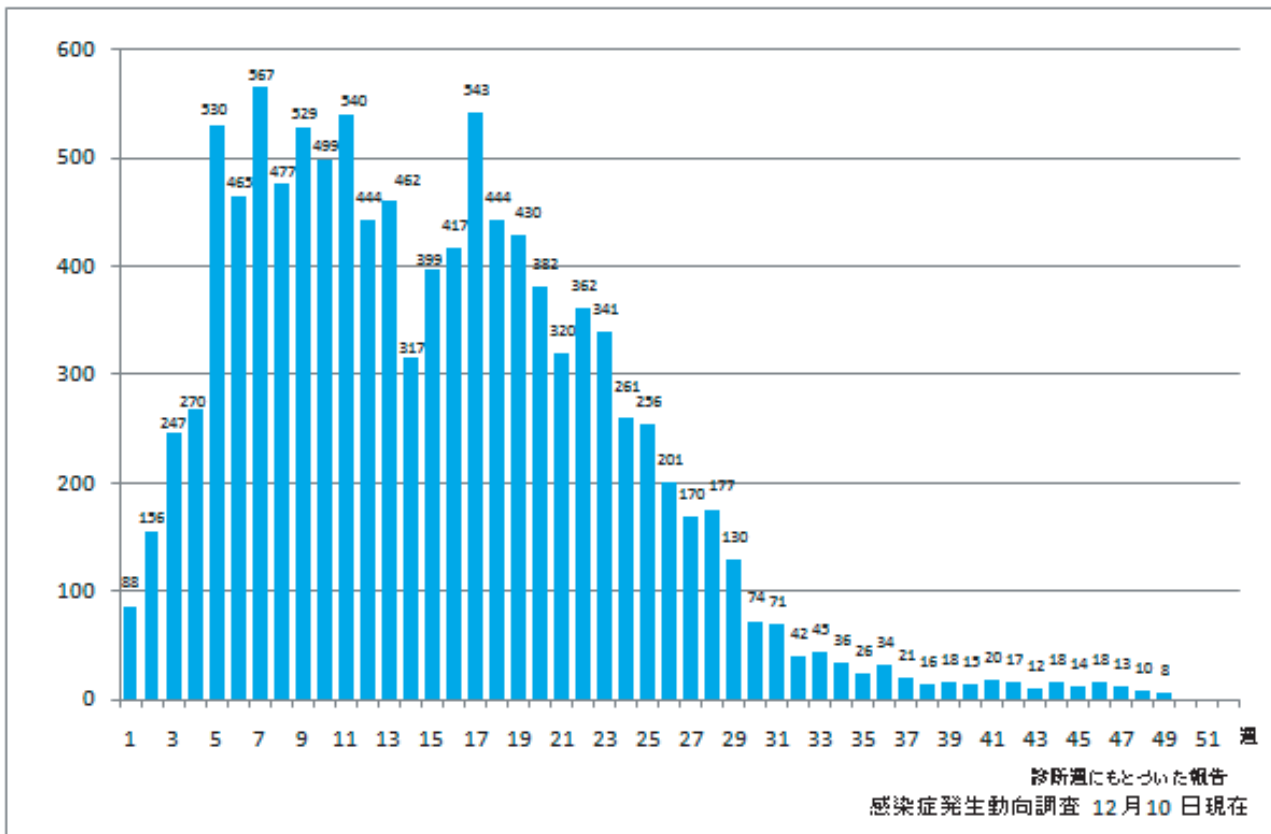


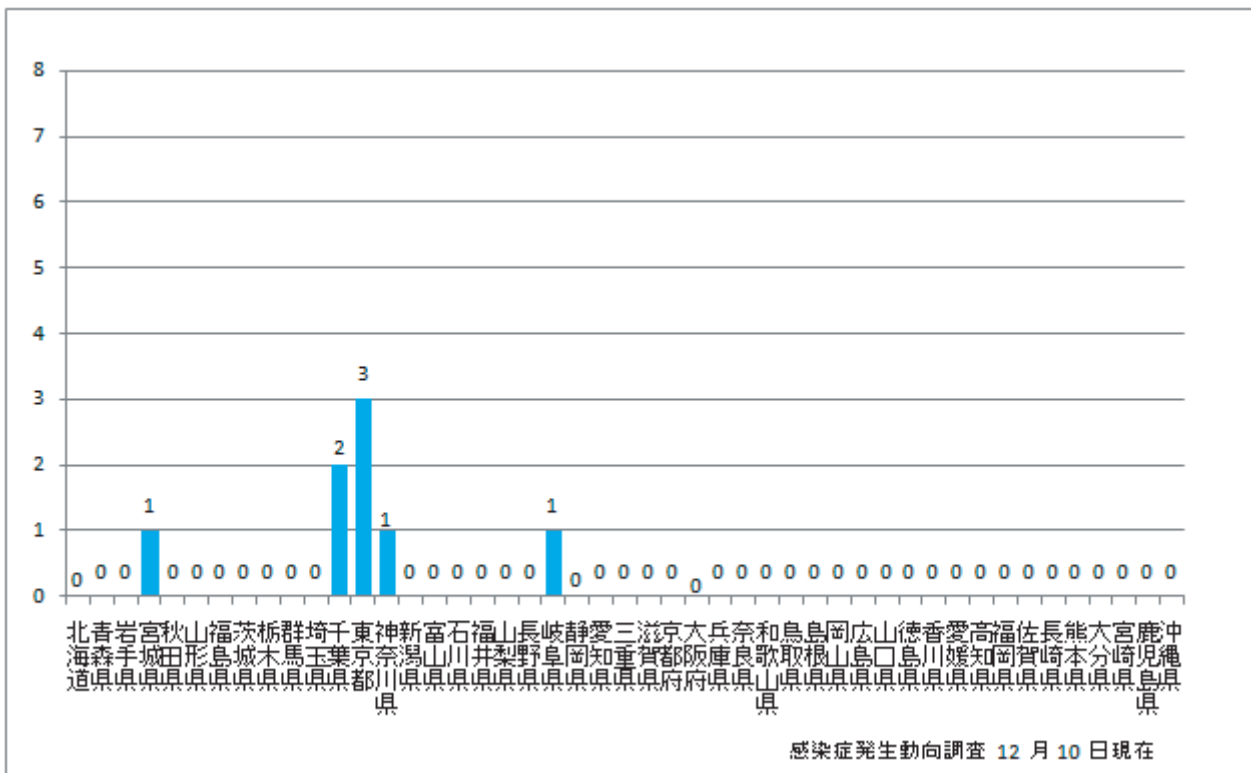
1. 週別麻疹報告数 2008年第1-49週 (n=10,952)

Weekly measles cases based on diagnosed week from week 1 to week 49, 2008
(Reported to National Epidemiological Surveillance of Infectious Diseases (NESID)
as of December 10, 2008)



2. 都道府県別麻疹報告数2008年第49週 (n=8)

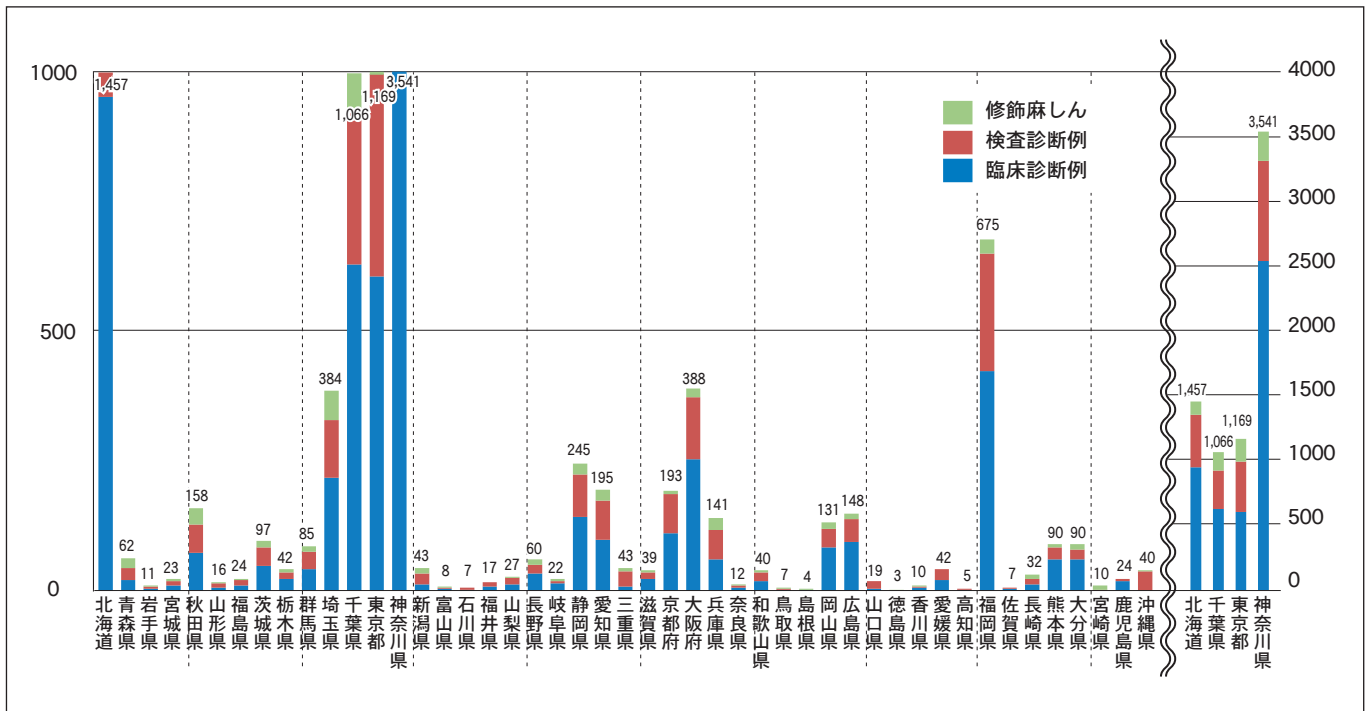
Reported measles cases by prefecture in week 49 (Reported to NESID as of
December 10, 2008).



3. 都道府県別病型別麻疹累積報告数 2008年第1週-49週 (n=10,952)

Cumulative measles cases by prefecture and methods of diagnosis from week 1 to week 49, 2008 (Reported to NESID as of December 10, 2008).

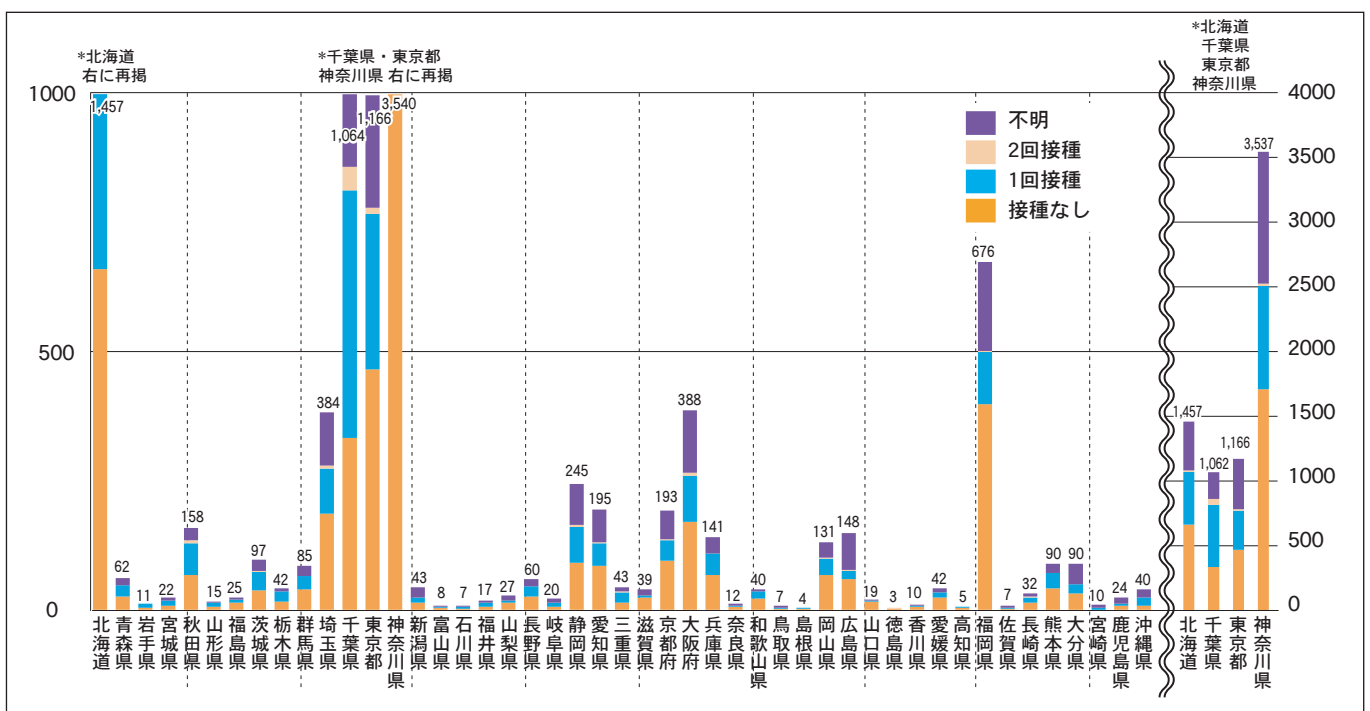
■ Clinically diagnosed ■ Laboratory diagnosed ■ Atypical measles, laboratory diagnosed



4. 都道府県別接種歴別麻疹累積報告数 2008年第1週-49週 (n=10,952)

Cumulative measles cases by prefecture and vaccinated status from week 1 to week 49, 2008 (Reported to NESID as of December 10, 2008).

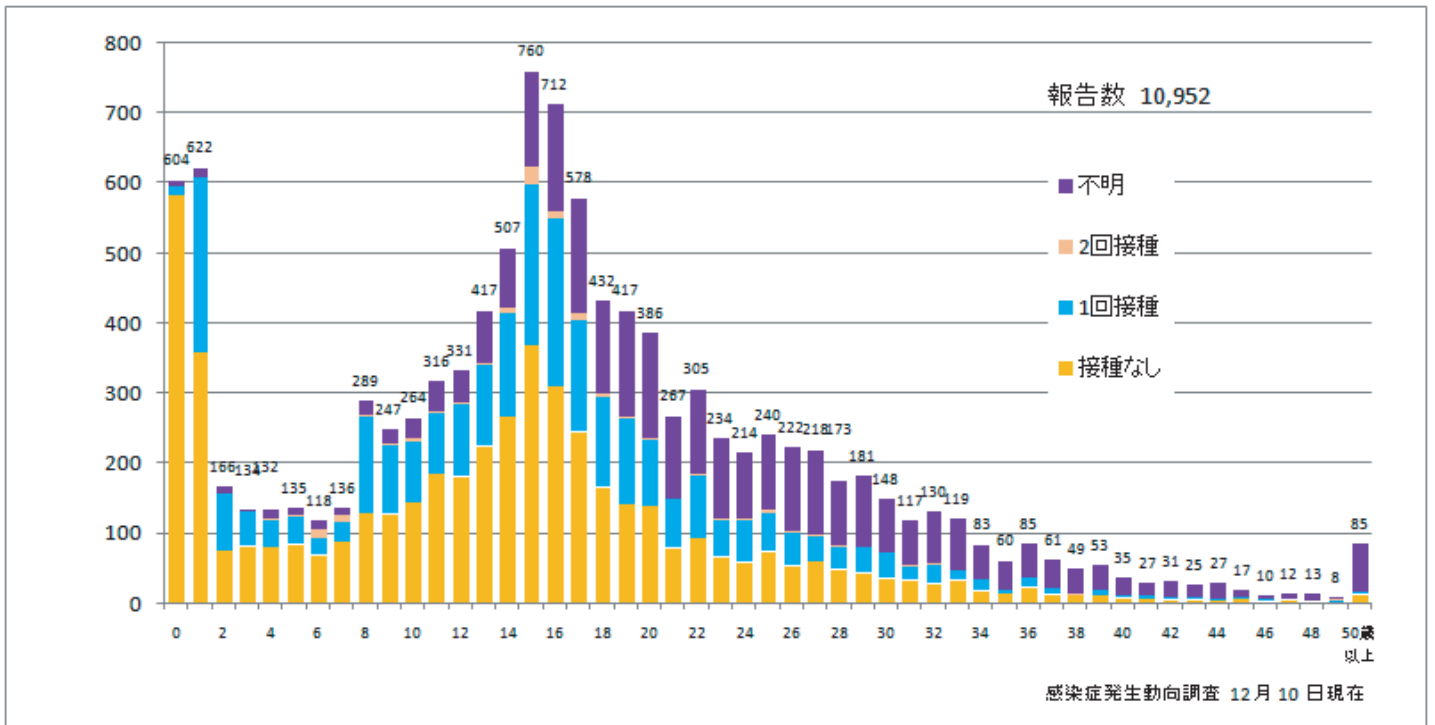
■ None ■ MCV1 ■ MCV2 ■ Unknown



5. 年齢群別接種歴別麻疹累積報告数 2008年第1週-49週 (n=10,952)

Cumulative measles cases by age and vaccinated status from week 1 to week 49, 2008
(Reported to NESID as of December 10, 2008).

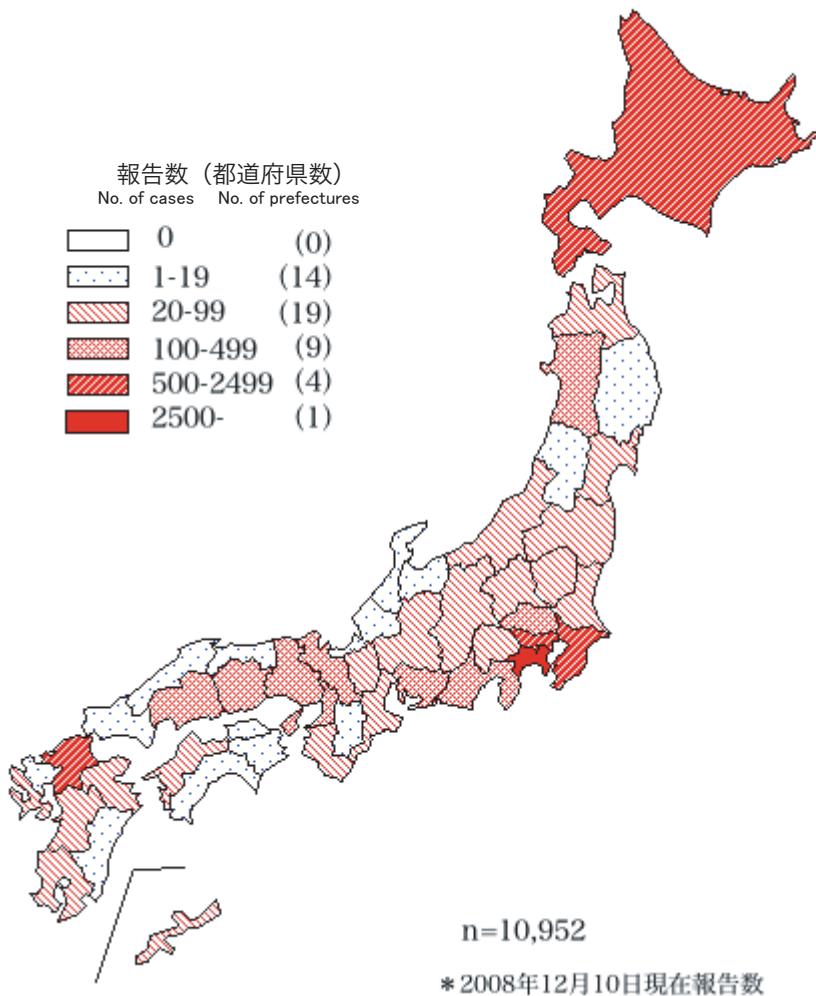
■ None ■ MCV1 ■ MCV2 ■ Unknown



6. 都道府県別麻疹累積報告状況、2008年第1週～49週

感染症発生動向調査

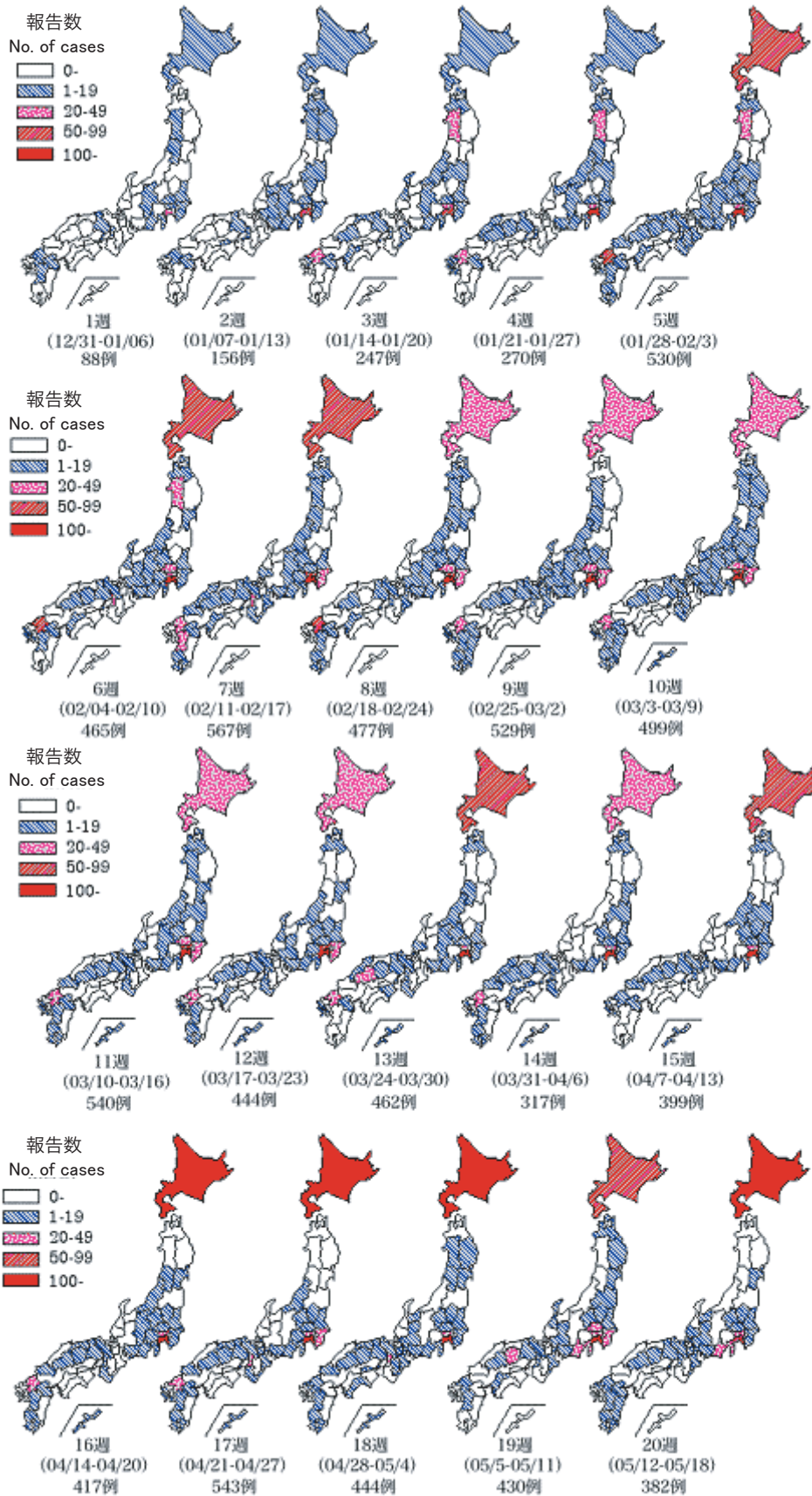
Cumulative measles cases by prefecture from week 1 to week 49, 2008 (Reported to NESID as of December 10, 2008).



7. 都道府県別麻疹週別報告状況、2008年第1週～49週（感染症発生動向調査）

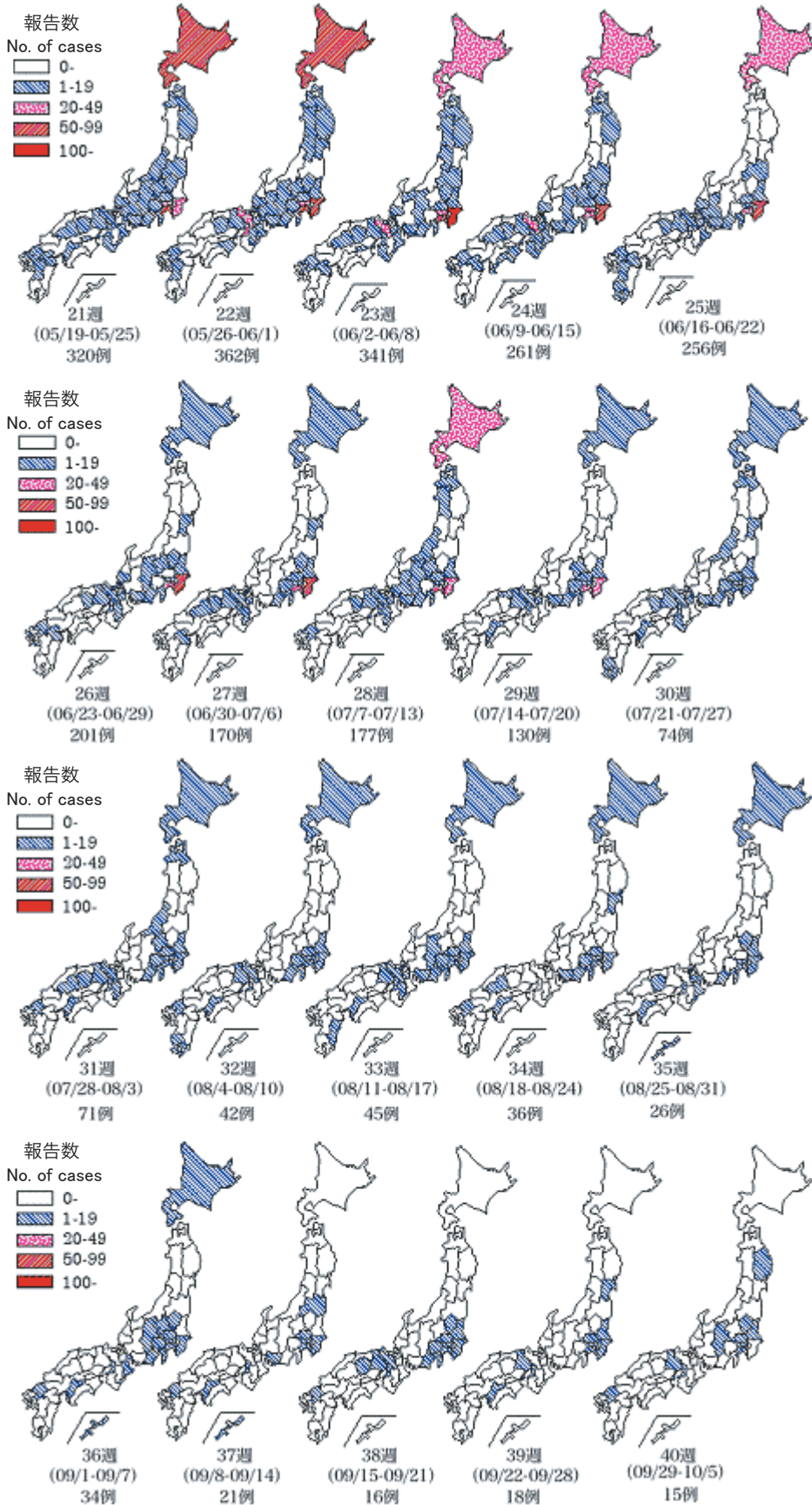
都道府県別麻疹週別報告状況、2008年第1週～第20週

Weekly measles cases based on diagnosed week from week 1 to week 49, 2008
(Reported to NESID as of December 10, 2008)



*2008年12月10日現在報告数

都道府県別麻疹週別報告状況、2008年第21週～40週



* 2008年12月10現在報告数

都道府県別麻疹週別報告状況、2008年第41週～49週

