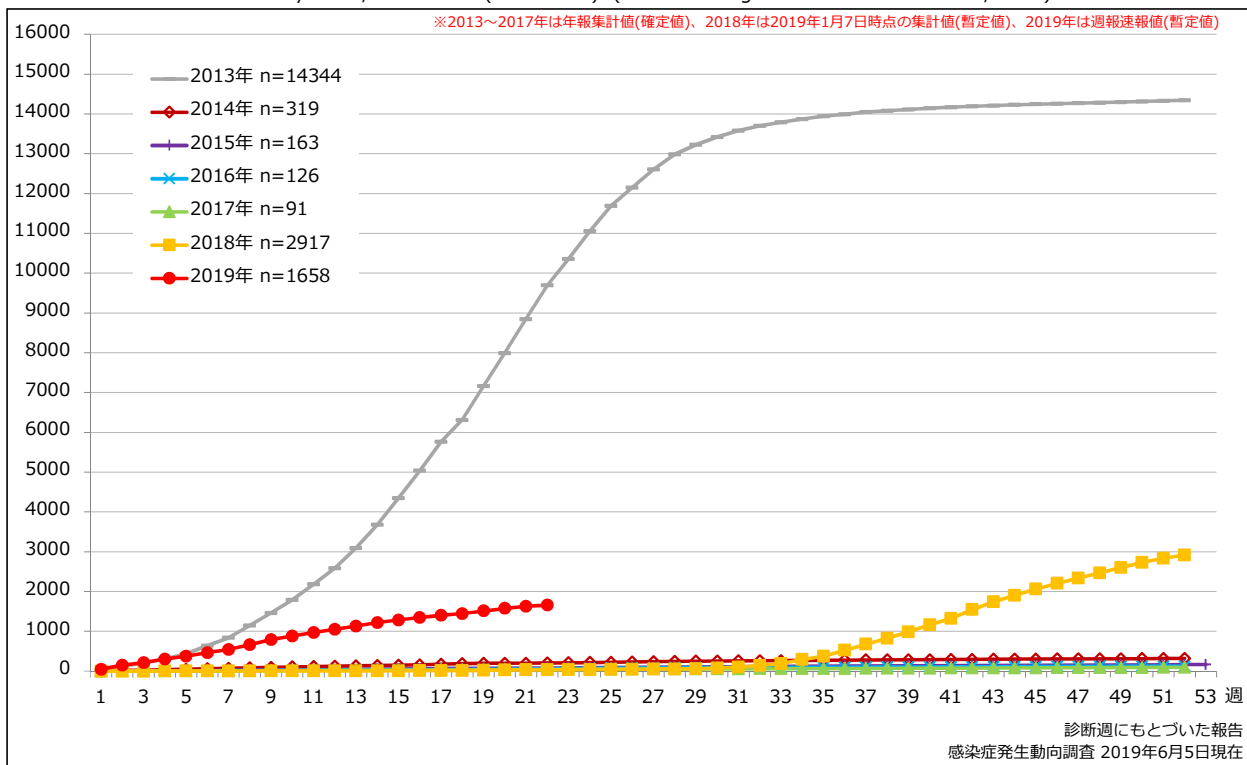


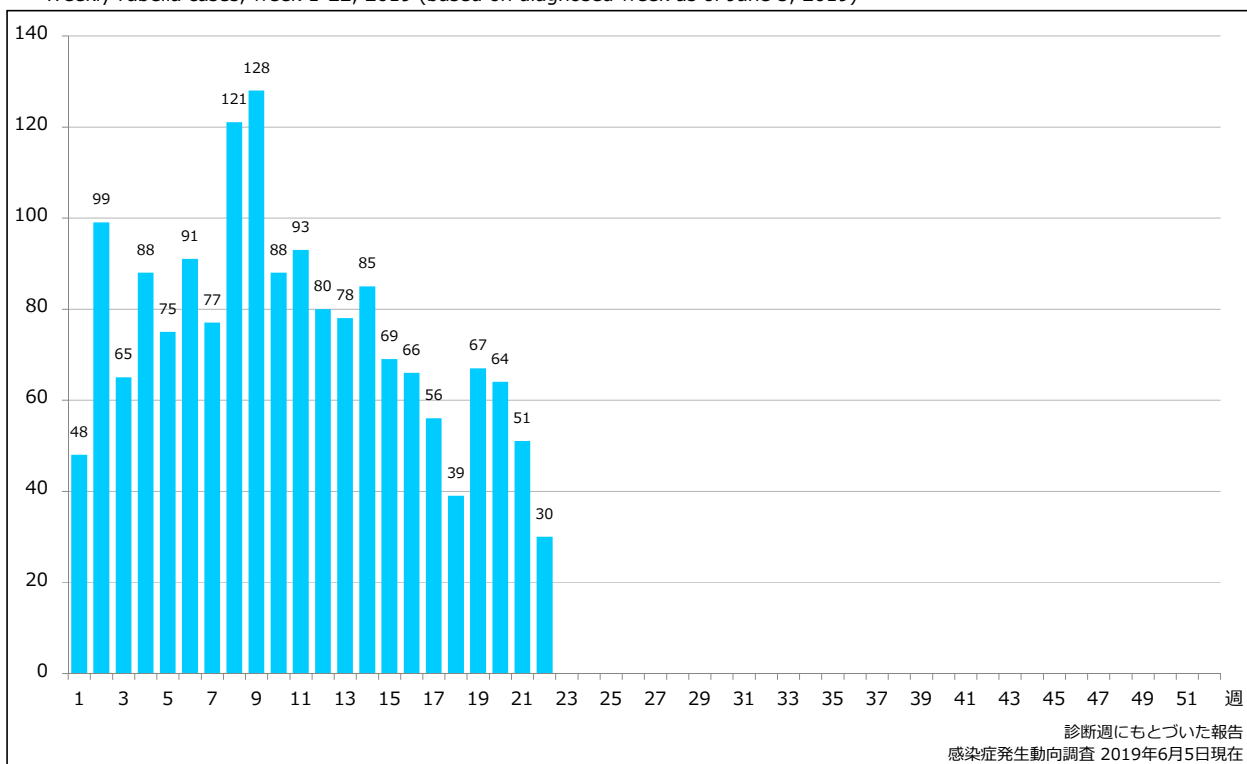
1. 風しん累積報告数の推移 2013～2019年 (第1～22週)

Cumulative rubella cases by week, 2013-2019 (week 1-22) (based on diagnosed week as of June 5, 2019)



2. 週別風しん報告数 2019年 第1～22週 (n=1658)

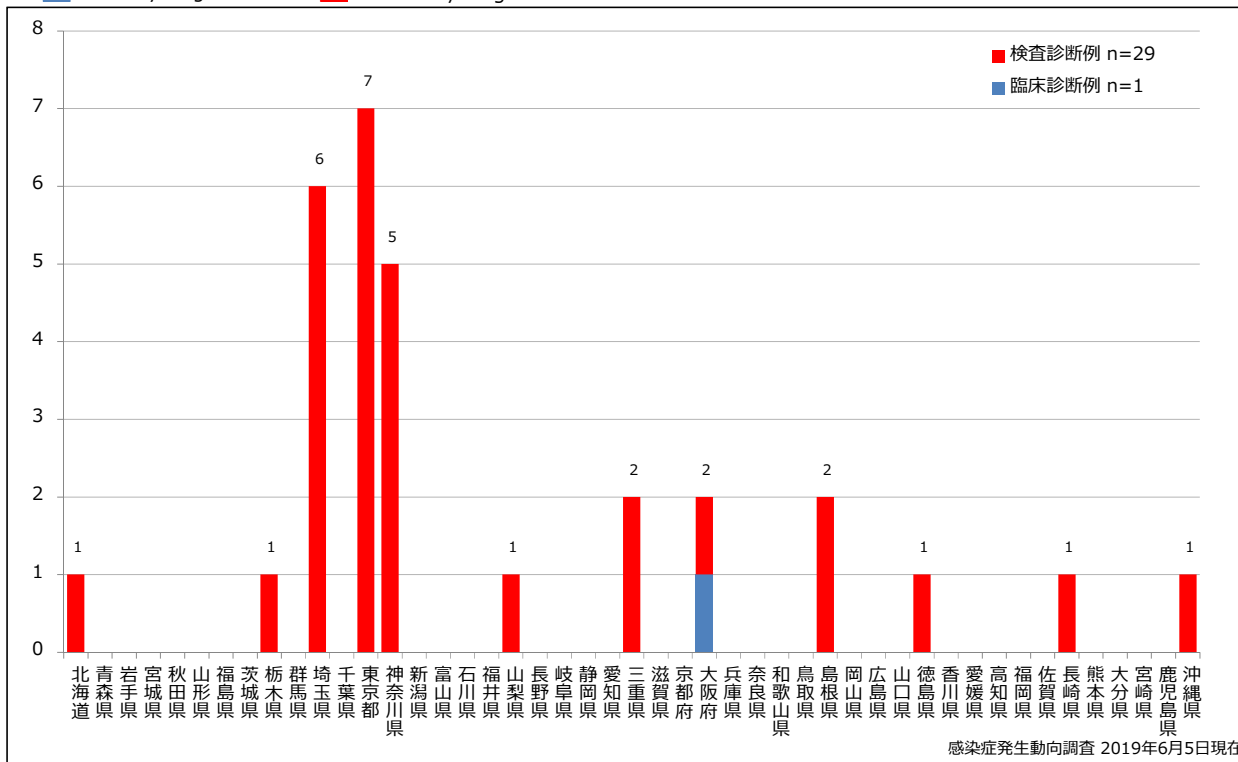
Weekly rubella cases, week 1-22, 2019 (based on diagnosed week as of June 5, 2019)



3. 都道府県別病型別風しん報告数 2019年 第22週 (n=30)

Reported rubella cases by prefecture and methods of diagnosis in week 22, 2019 (as of June 5, 2019)

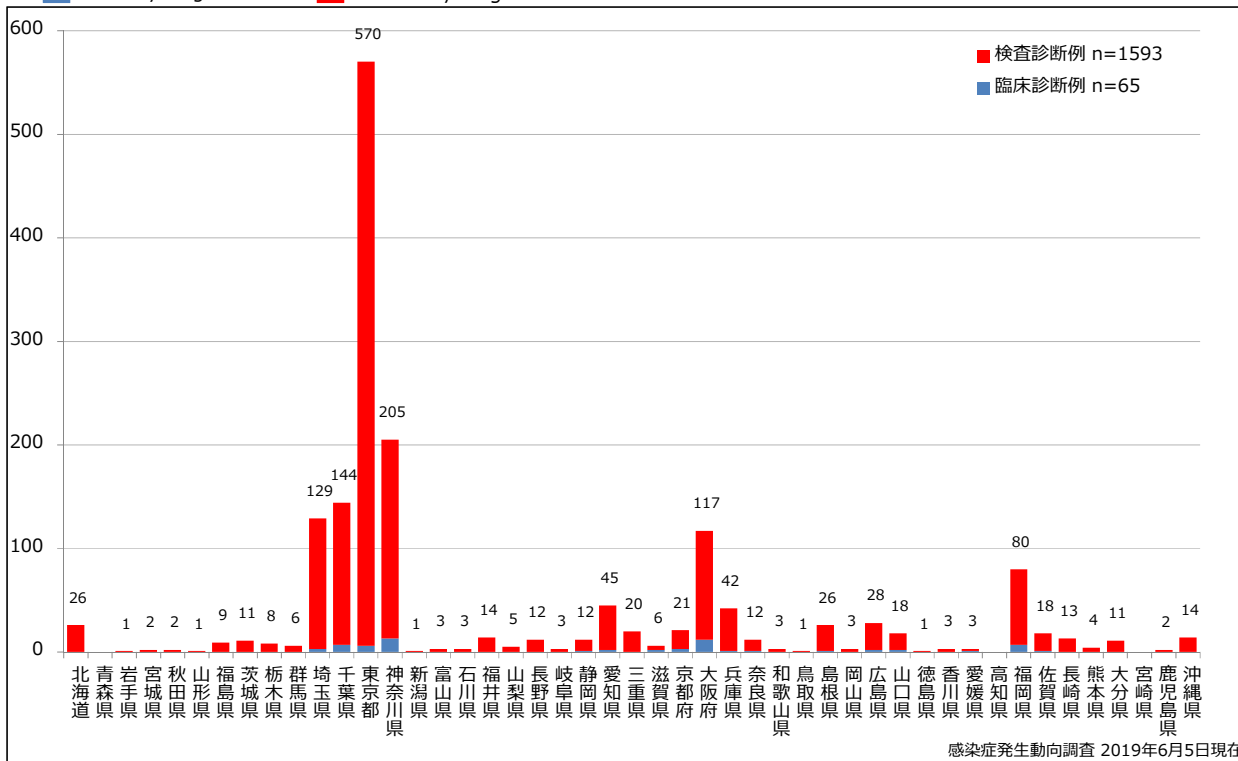
■ Clinically diagnosed ■ Laboratory diagnosed



4. 都道府県別病型別風しん累積報告数 2019年 第1~22週 (n=1658)

Cumulative rubella cases by prefecture and methods of diagnosis, week 1-22, 2019 (as of June 5, 2019)

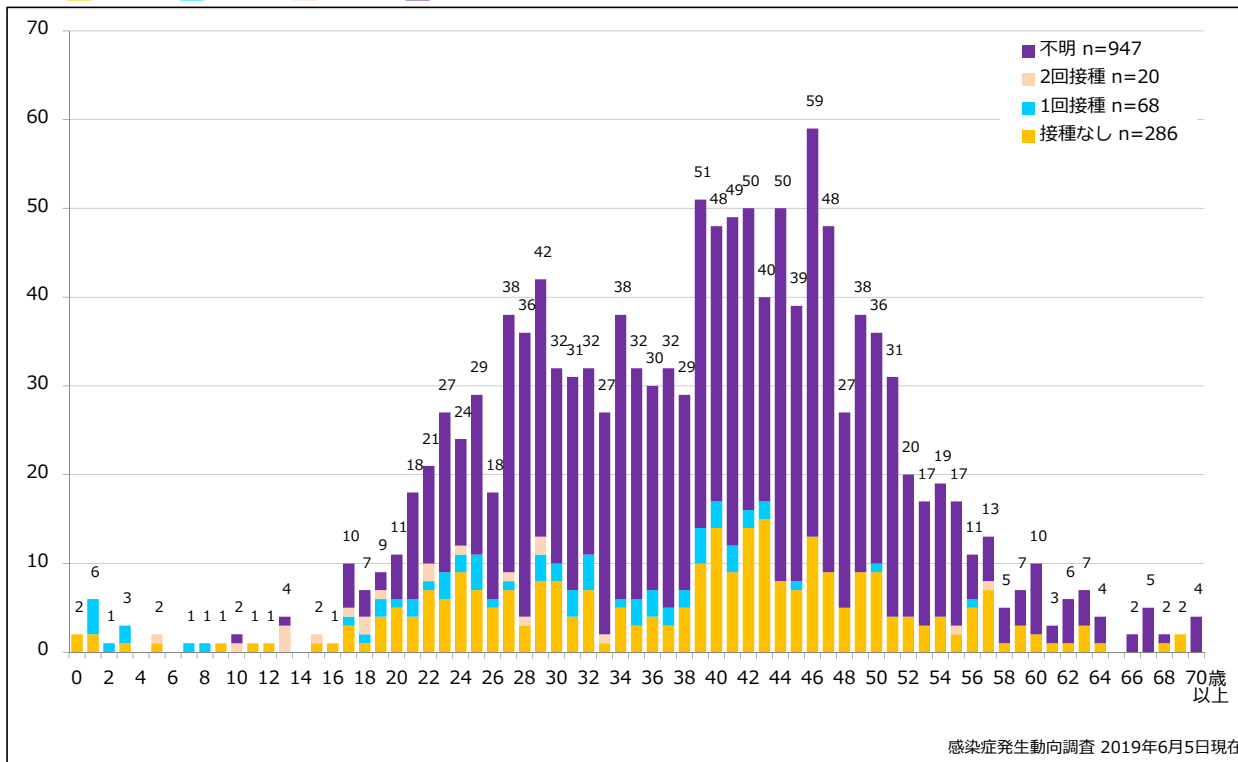
■ Clinically diagnosed ■ Laboratory diagnosed



5-1. 年齢群別接種歴別風しん累積報告数 (男性) 2019年 第1~22週 (n=1321)

Cumulative rubella cases (male) by age and vaccinated status, week 1-22, 2019 (as of June 5, 2019)

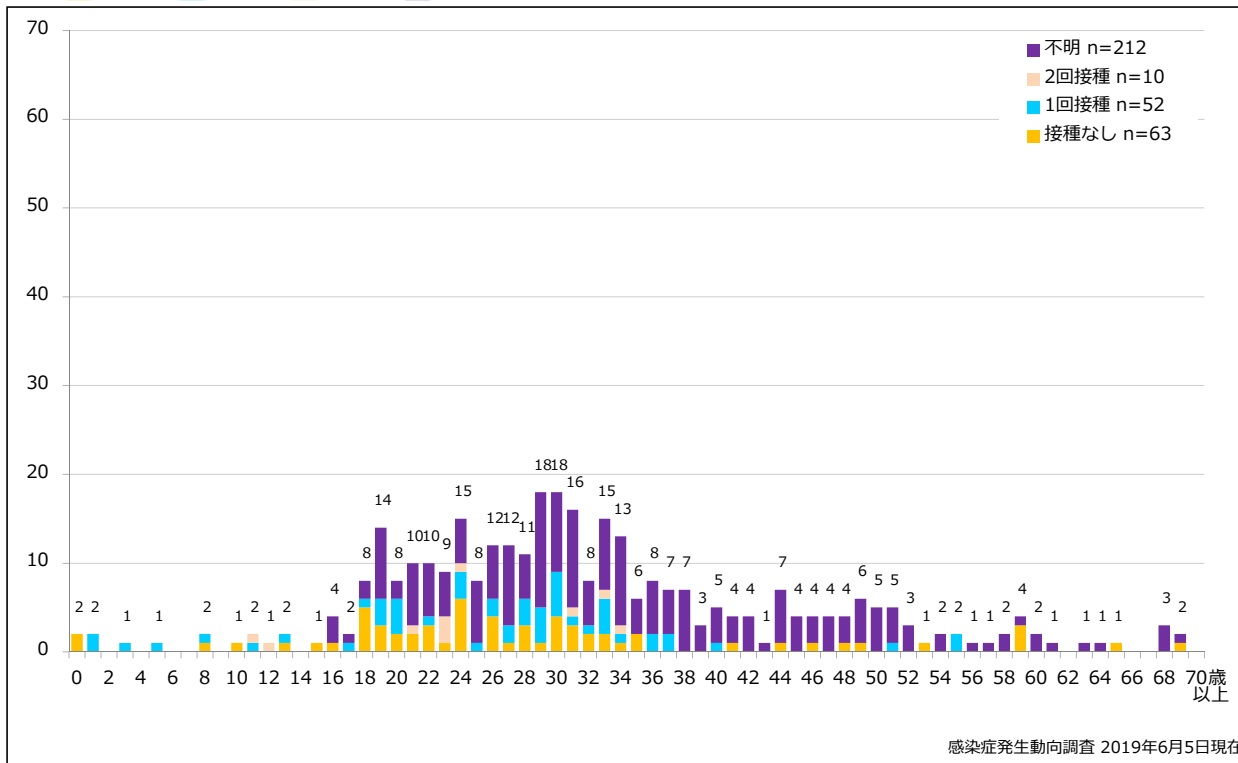
None RCV1 RCV2 Unknown



5-2. 年齢群別接種歴別風しん累積報告数 (女性) 2019年 第1~22週 (n=337)

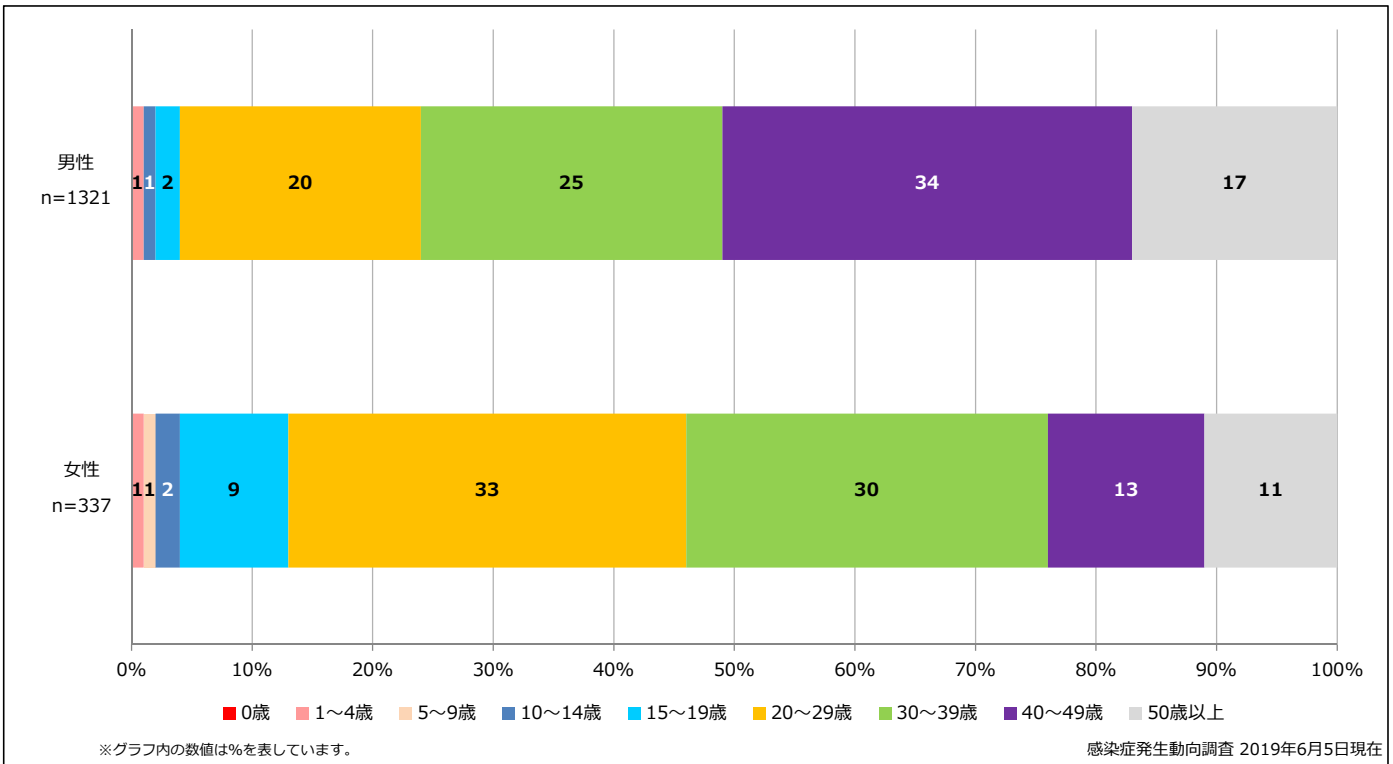
Cumulative rubella cases (female) by age and vaccinated status, week 1-22, 2019 (as of June 5, 2019)

None RCV1 RCV2 Unknown



6. 年齢群別風しん累積報告数割合 (男女別) 2019年 第1~22週 (n=1658)

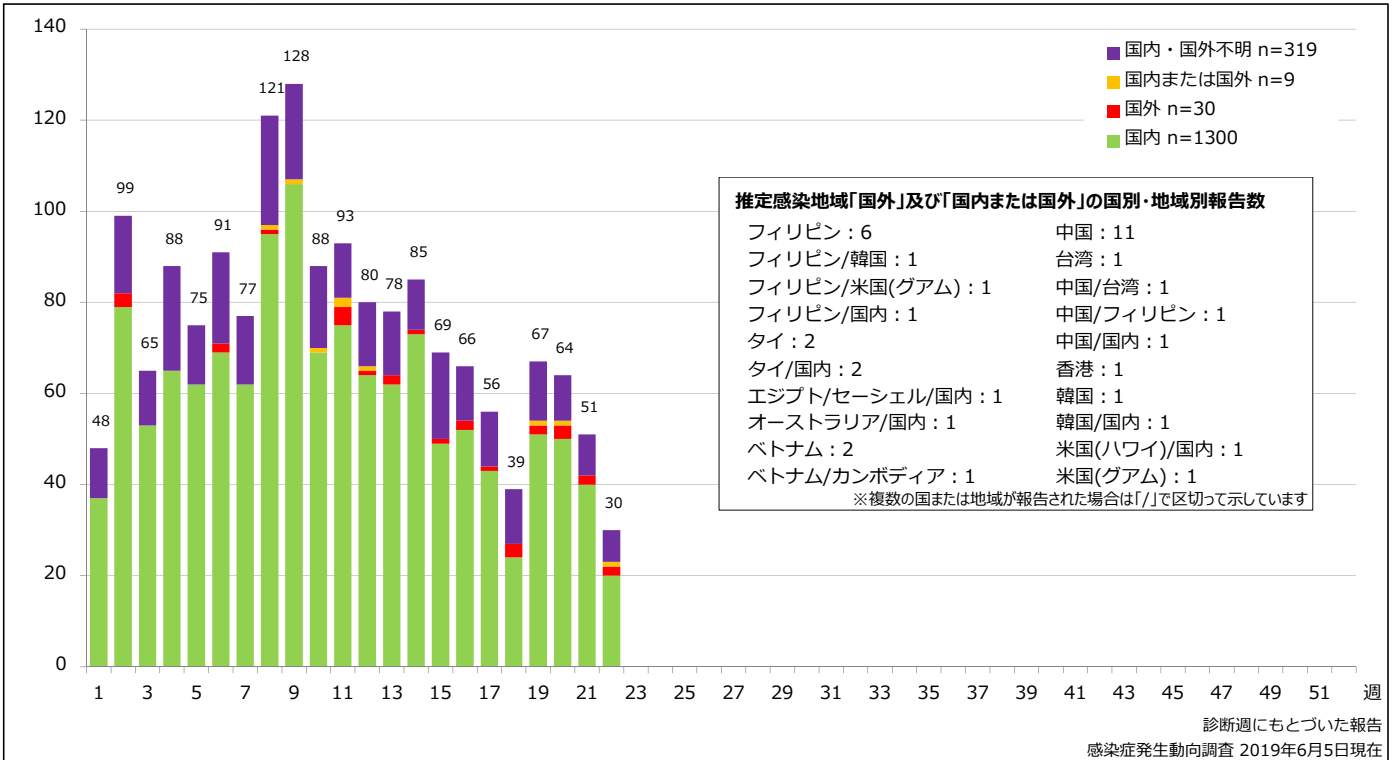
Percentage of cumulative rubella cases (upper: male, bottom: female) by age group, week 1-22, 2019 (as of June 5, 2019)



7. 週別推定感染地域(国内・外)別風しん報告数 2019年 第1~22週 (n=1658)

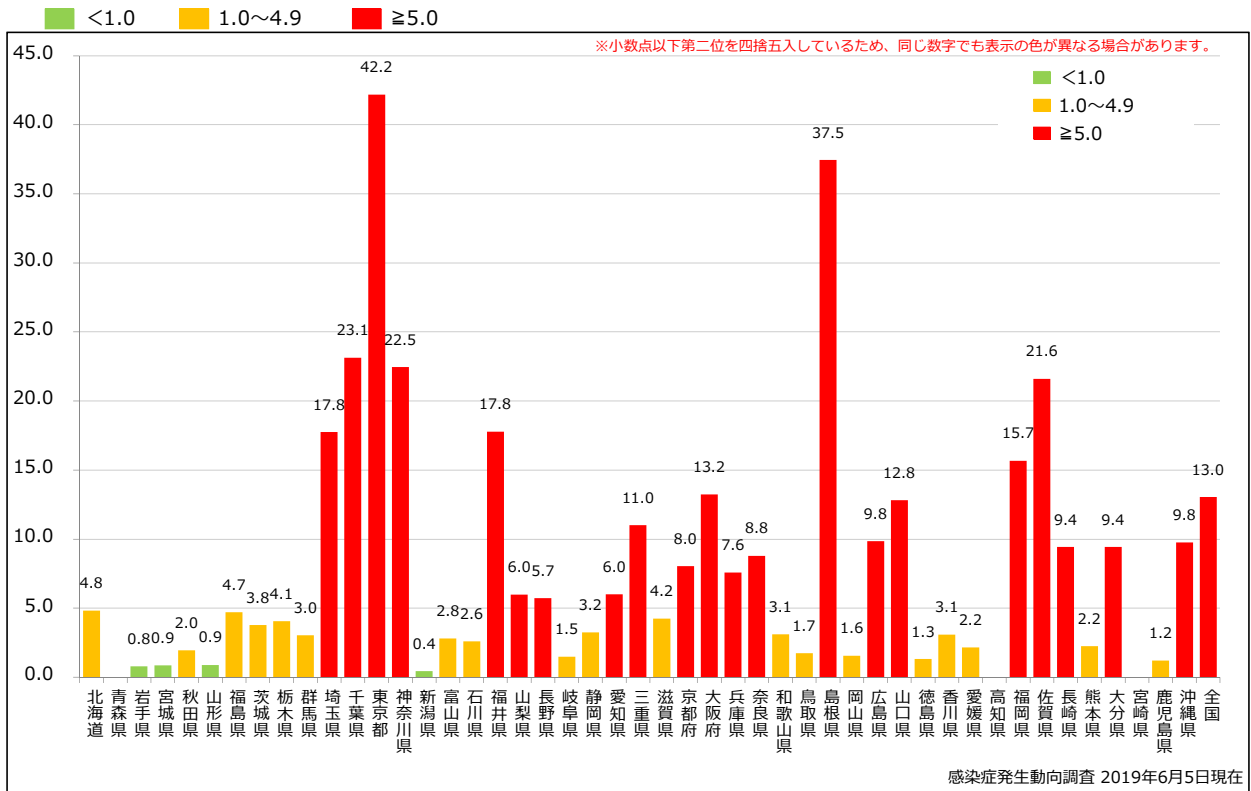
Weekly rubella cases by acquired region, week 1-22, 2019 (based on diagnosed week as of June 5, 2019)

Domestic Imported Unspecified Unknown



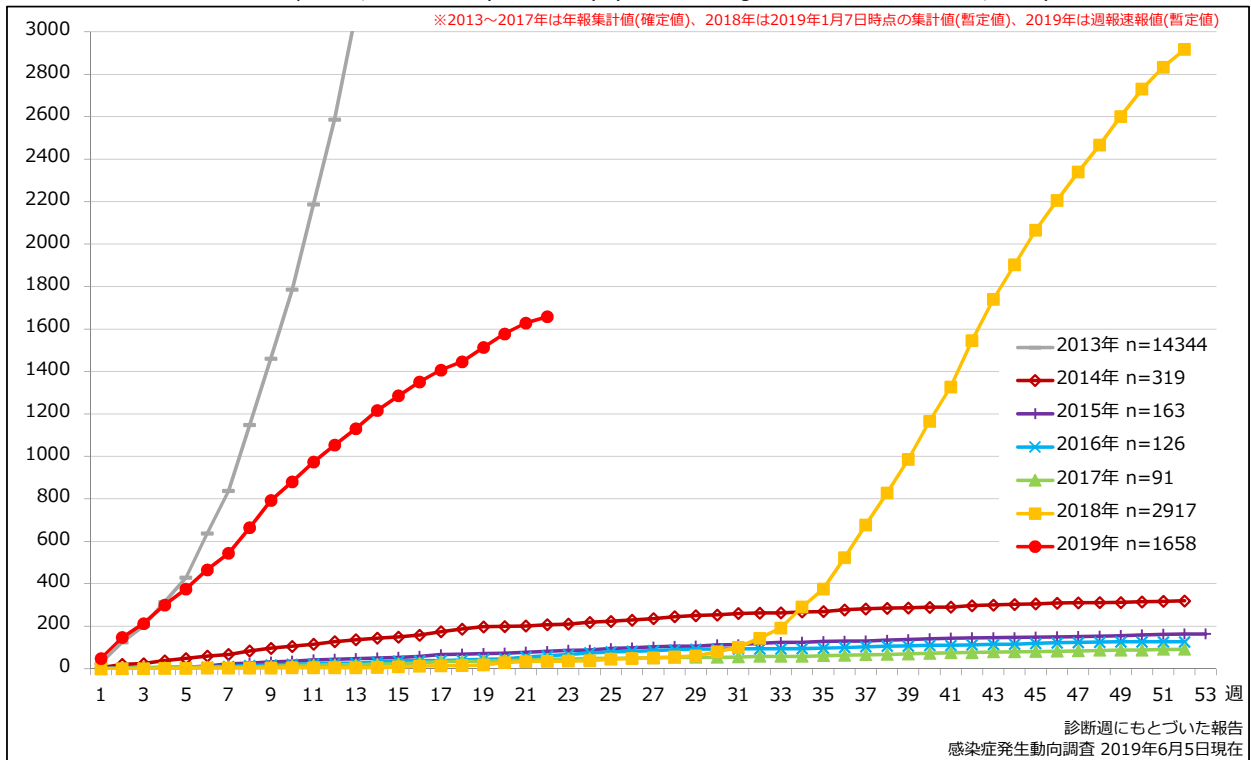
8. 都道府県別人口百万人あたり風しん報告数 2019年 第1~22週 (n=1658)

Reported rubella cases per 1 million population by prefecture, week 1-22, 2019 (as of June 5, 2019)



追補. 風しん累積報告数の推移 2013~2019年 (第1~22週)

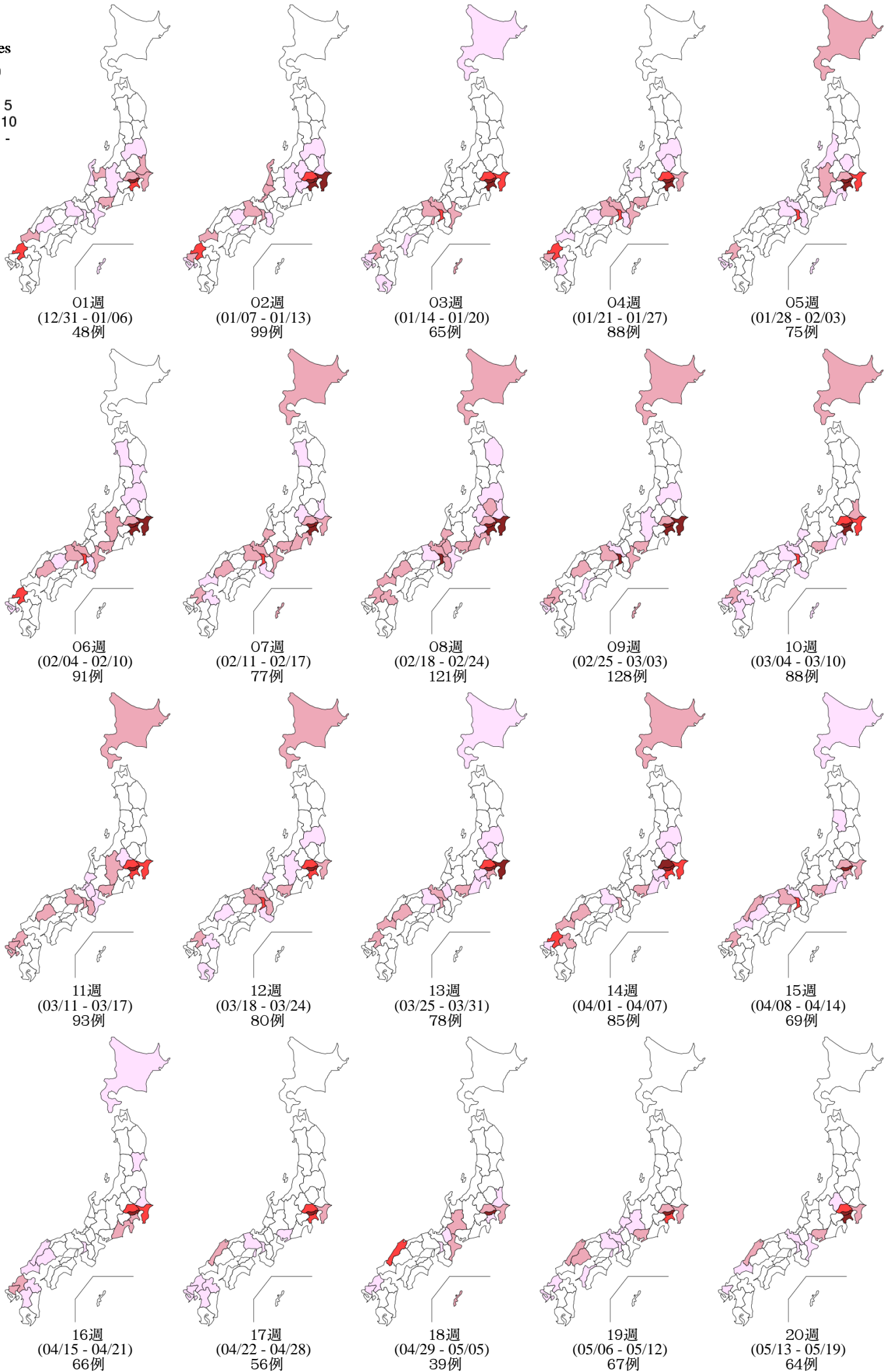
Cumulative rubella cases by week, 2013-2019 (week 1-22) (based on diagnosed week as of June 5, 2019)



9. 都道府県別風しん週別報告状況 2019年 第1~22週 感染症発生動向調査

2019年06月05日現在

Weekly rubella cases from week 01 to week 22, 2019 (based on diagnosed week as of June 05, 2019)



9. 都道府県別風しん週別報告状況 2019年 第1~22週 感染症発生動向調査
Weekly rubella cases from week 01 to week 22, 2019 (based on diagnosed week as of June 05, 2019)

2019年06月05日現在

報告数
No. of cases

0
1
2 - 5
6 - 10
11 -

