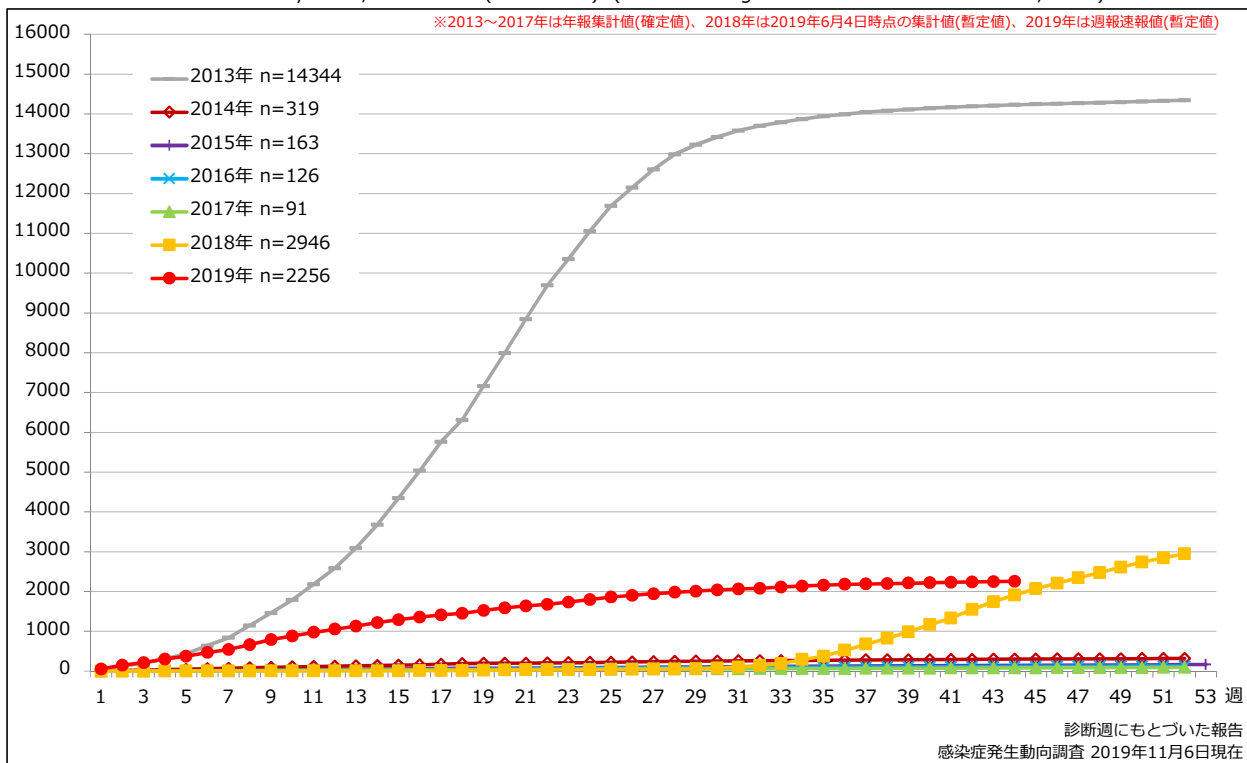


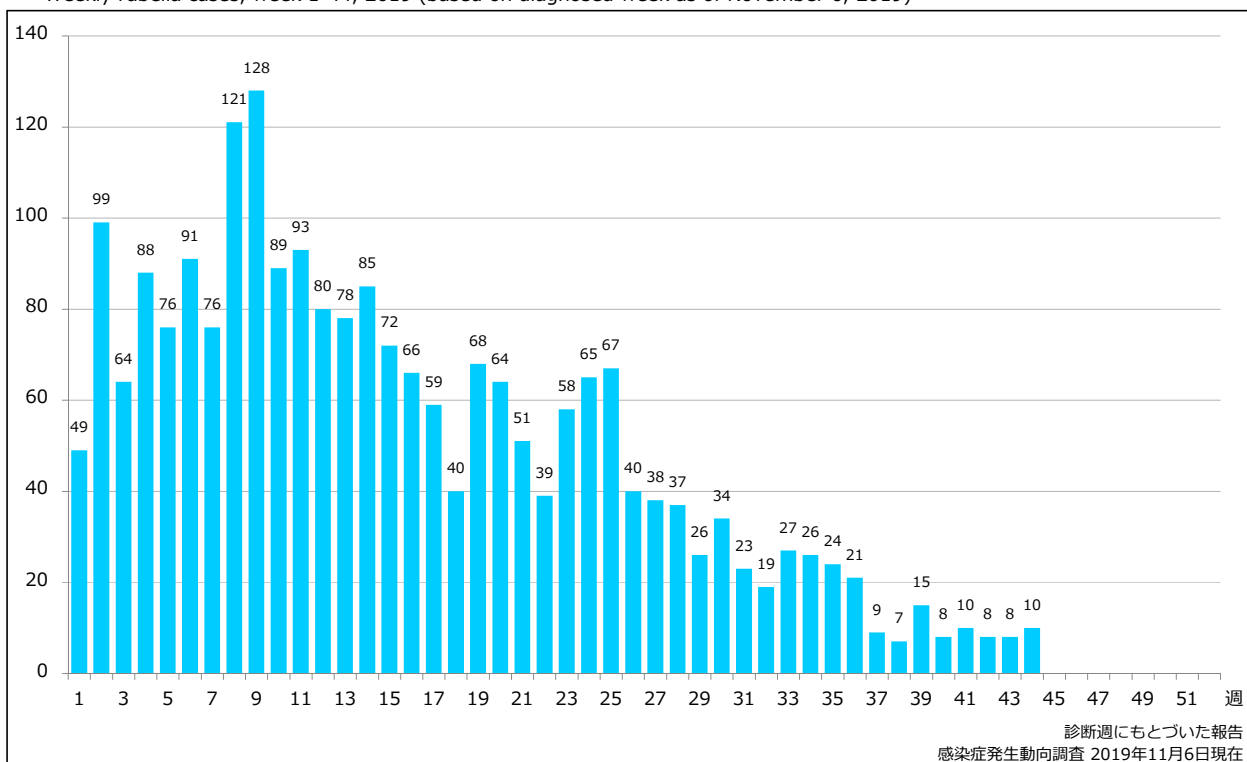
1. 風しん累積報告数の推移 2013～2019年 (第1～44週)

Cumulative rubella cases by week, 2013-2019 (week 1-44) (based on diagnosed week as of November 6, 2019)



2. 週別風しん報告数 2019年 第1～44週 (n=2256)

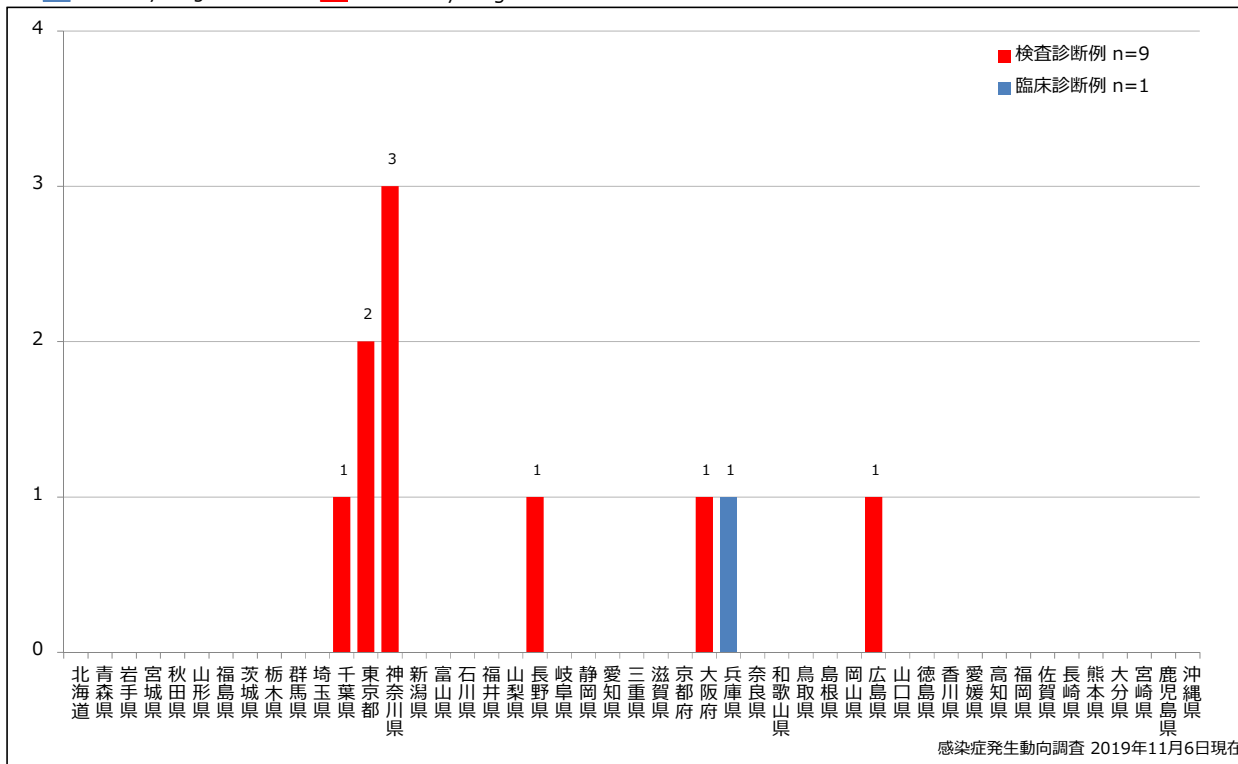
Weekly rubella cases, week 1-44, 2019 (based on diagnosed week as of November 6, 2019)



3. 都道府県別病型別風しん報告数 2019年 第44週 (n=10)

Reported rubella cases by prefecture and methods of diagnosis in week 44, 2019 (as of November 6, 2019)

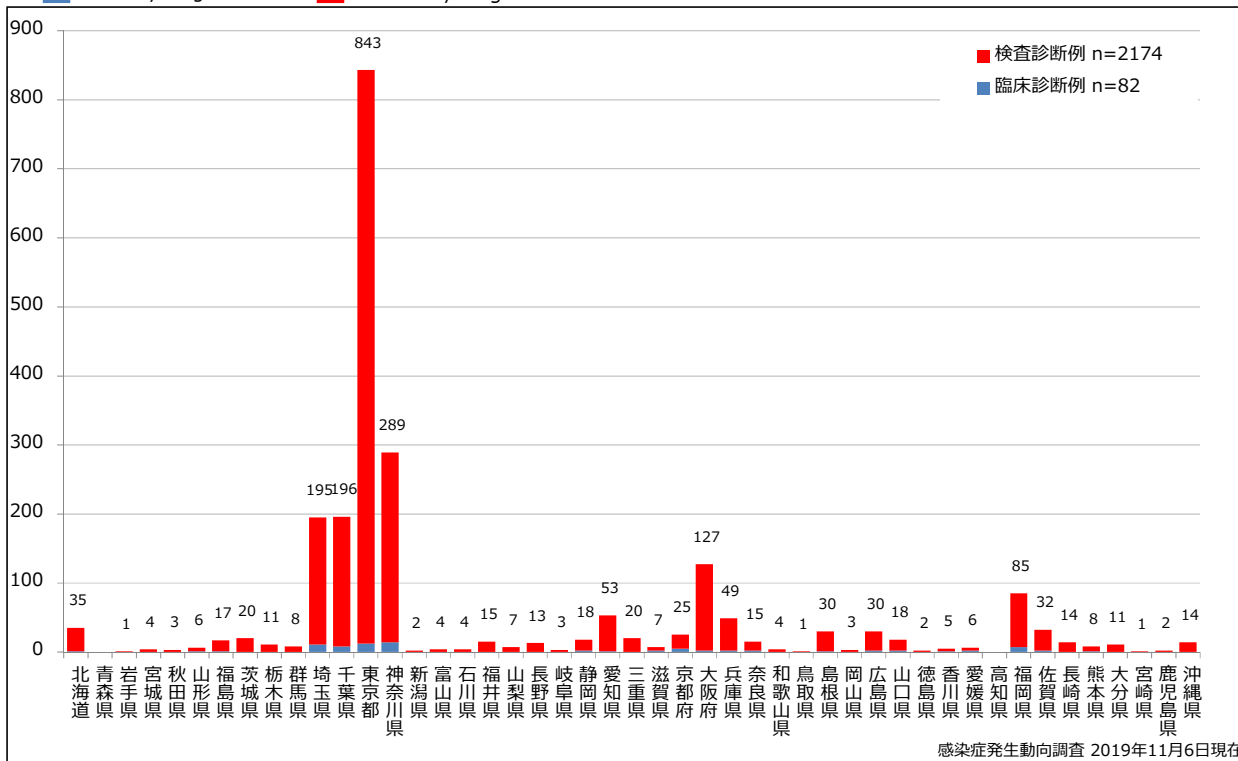
■ Clinically diagnosed ■ Laboratory diagnosed



4. 都道府県別病型別風しん累積報告数 2019年 第1~44週 (n=2256)

Cumulative rubella cases by prefecture and methods of diagnosis, week 1-44, 2019 (as of November 6, 2019)

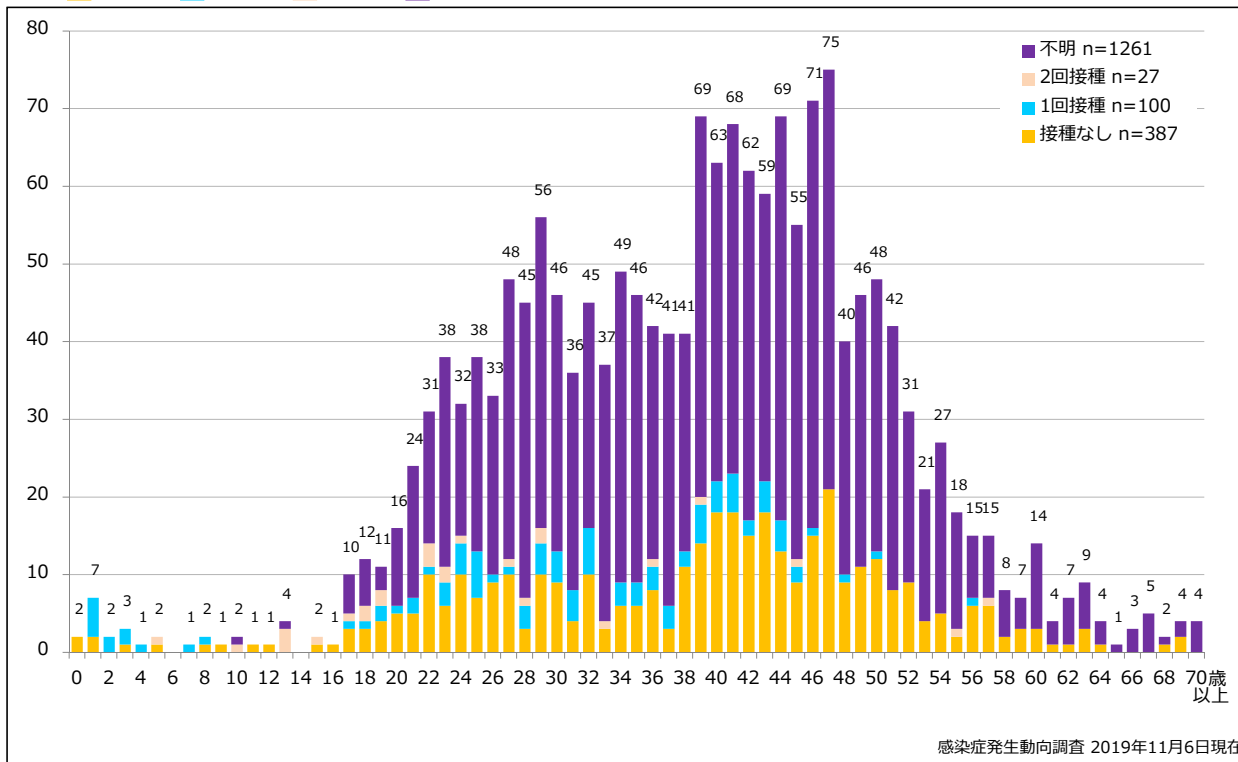
■ Clinically diagnosed ■ Laboratory diagnosed



5-1. 年齢群別接種歴別風しん累積報告数 (男性) 2019年 第1~44週 (n=1775)

Cumulative rubella cases (male) by age and vaccinated status, week 1-44, 2019 (as of November 6, 2019)

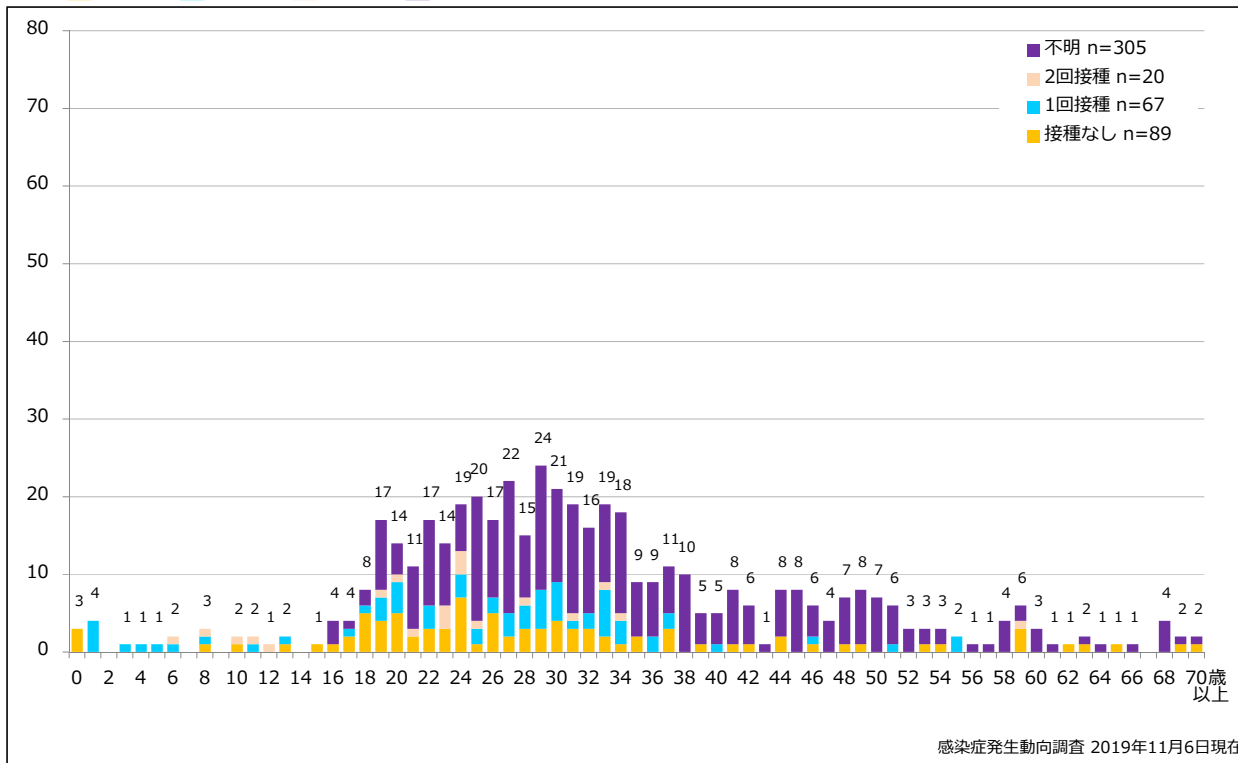
None RCV1 RCV2 Unknown



5-2. 年齢群別接種歴別風しん累積報告数 (女性) 2019年 第1~44週 (n=481)

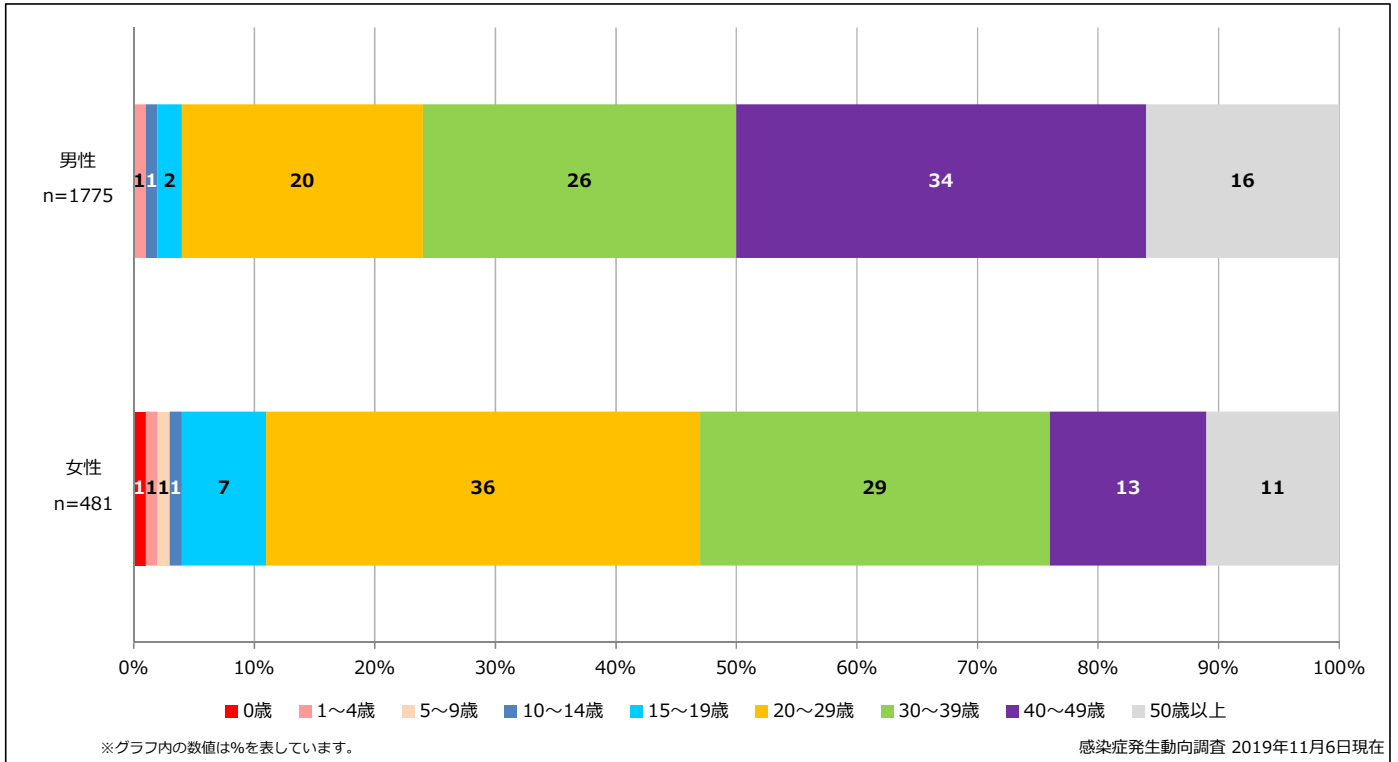
Cumulative rubella cases (female) by age and vaccinated status, week 1-44, 2019 (as of November 6, 2019)

None RCV1 RCV2 Unknown



6. 年齢群別風しん累積報告数割合 (男女別) 2019年 第1~44週 (n=2256)

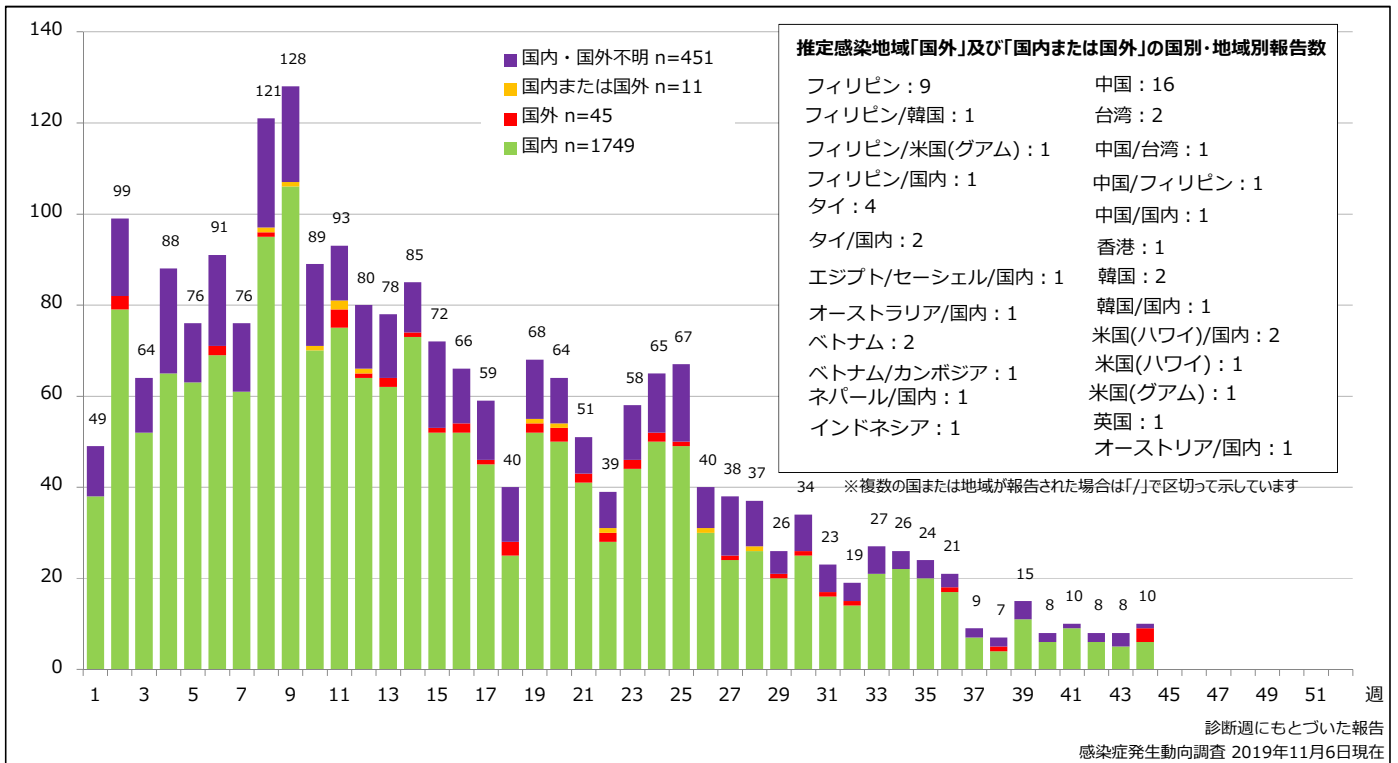
Percentage of cumulative rubella cases (upper: male, bottom: female) by age group, week 1-44, 2019 (as of November 6, 2019)



7. 週別推定感染地域(国内・外)別風しん報告数 2019年 第1~44週 (n=2256)

Weekly rubella cases by acquired region, week 1-44, 2019 (based on diagnosed week as of November 6, 2019)

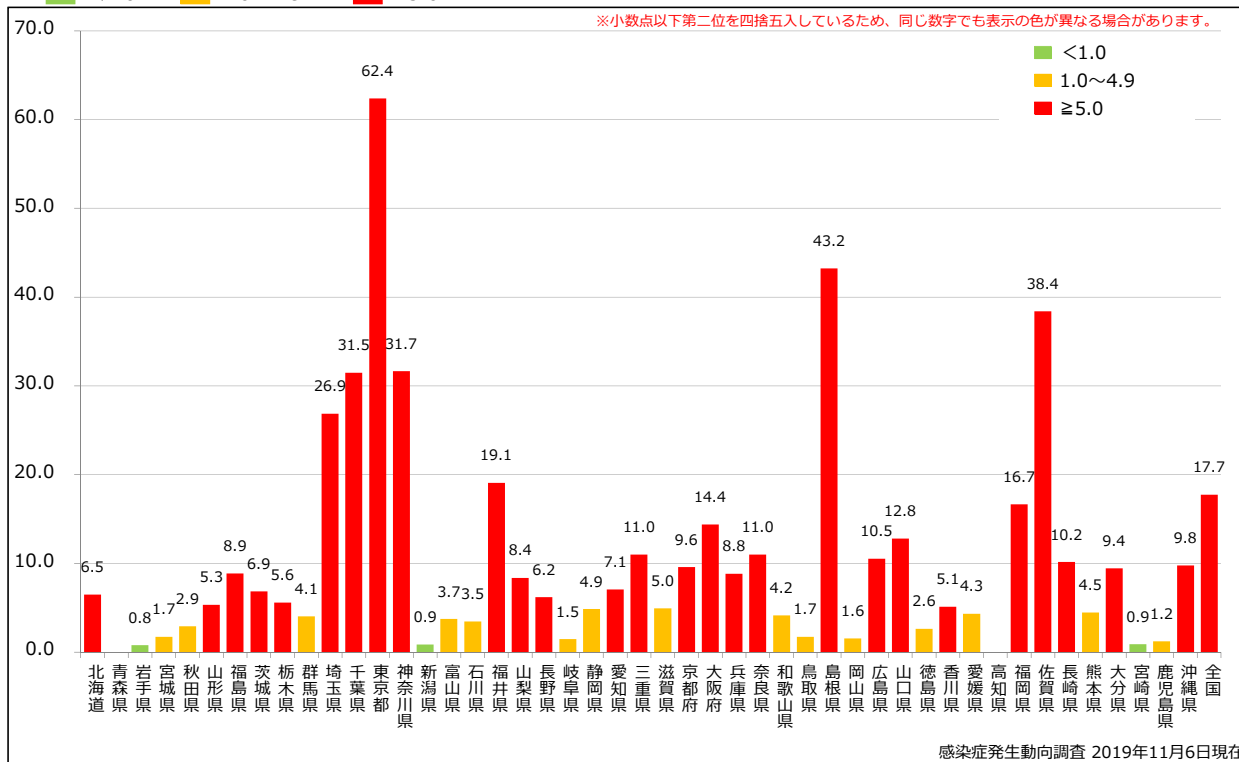
Domestic Imported Unspecified Unknown



8. 都道府県別人口百万人あたり風しん報告数 2019年 第1~44週 (n=2256)

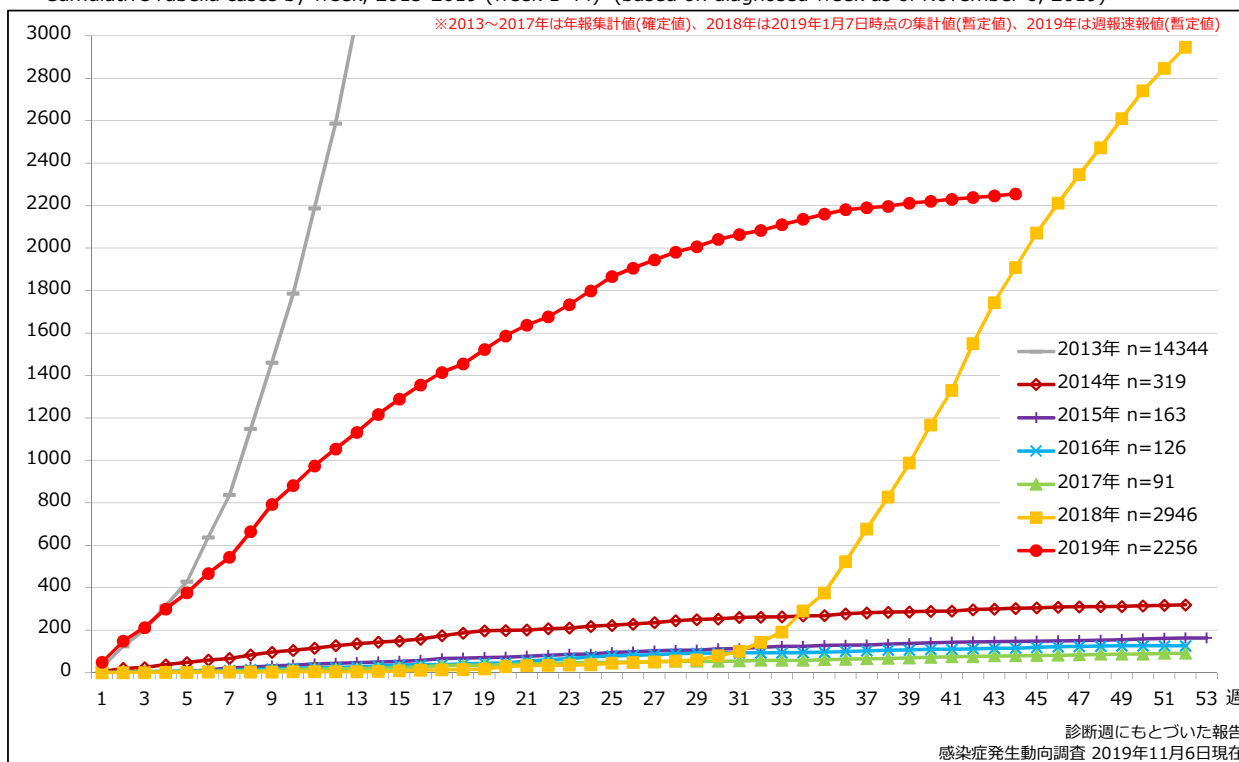
Reported rubella cases per 1 million population by prefecture, week 1-44, 2019 (as of November 6, 2019)

■ <1.0 ■ 1.0~4.9 ■ ≥5.0



追補. 風しん累積報告数の推移 2013~2019年 (第1~44週)

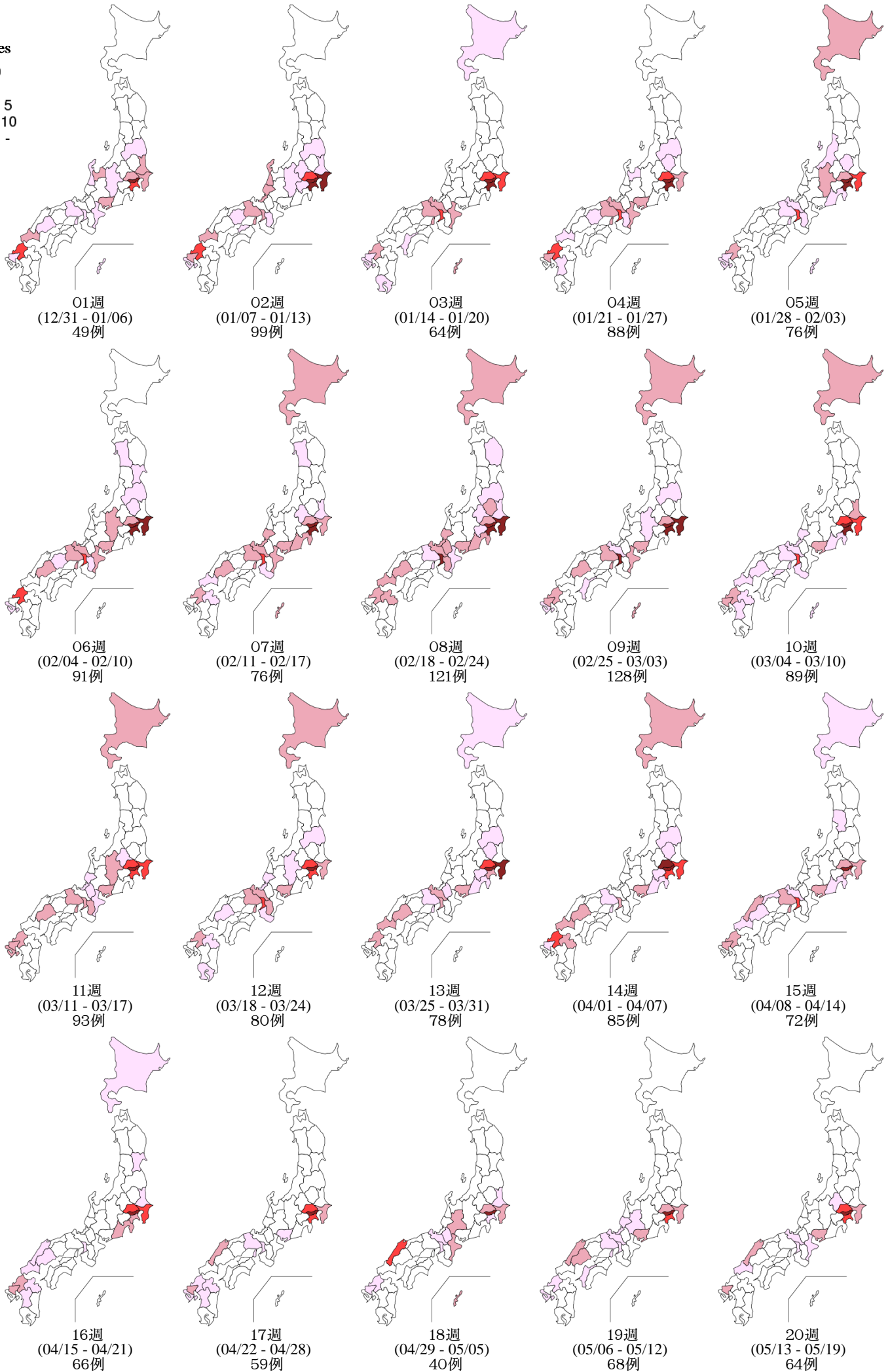
Cumulative rubella cases by week, 2013-2019 (week 1-44) (based on diagnosed week as of November 6, 2019)



9. 都道府県別風しん週別報告状況 2019年 第1~44週 感染症発生動向調査

2019年11月06日現在

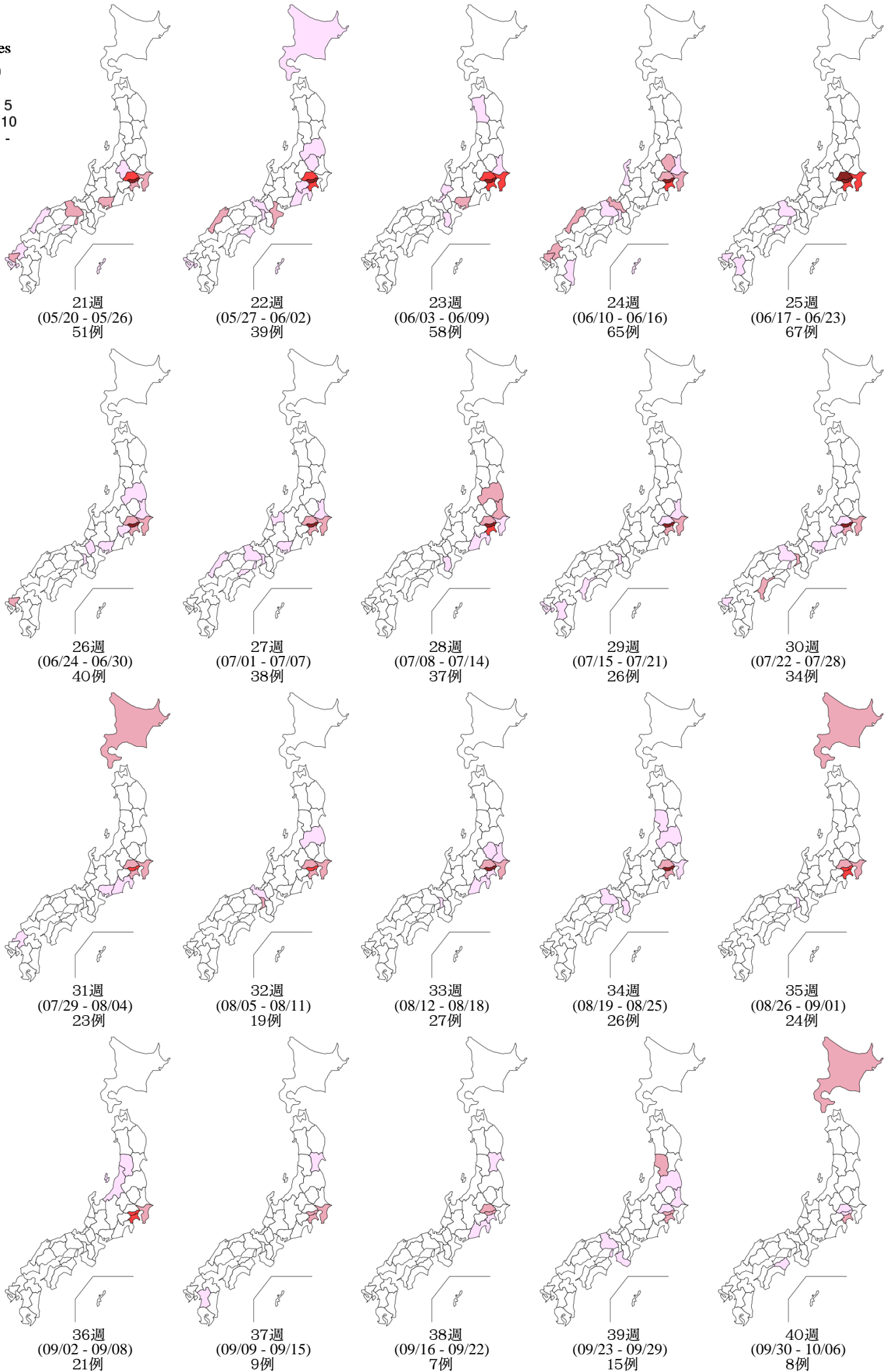
Weekly rubella cases from week 01 to week 44, 2019 (based on diagnosed week as of November 06, 2019)



9. 都道府県別風しん週別報告状況 2019年 第1~44週 感染症発生動向調査

2019年11月06日現在

Weekly rubella cases from week 01 to week 44, 2019 (based on diagnosed week as of November 06, 2019)



Weekly rubella cases from week 01 to week 44, 2019 (based on diagnosed week as of November 06, 2019)

