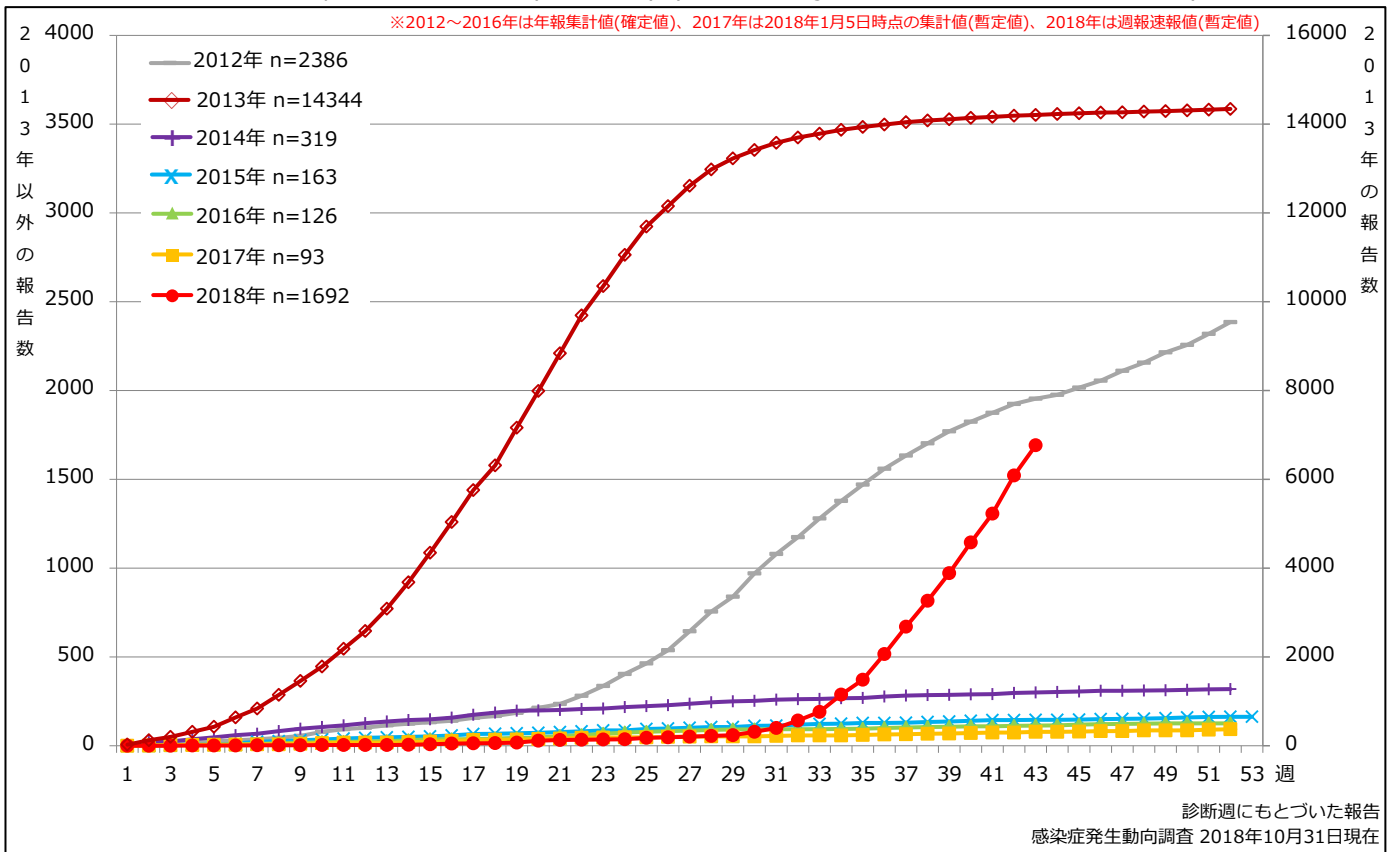


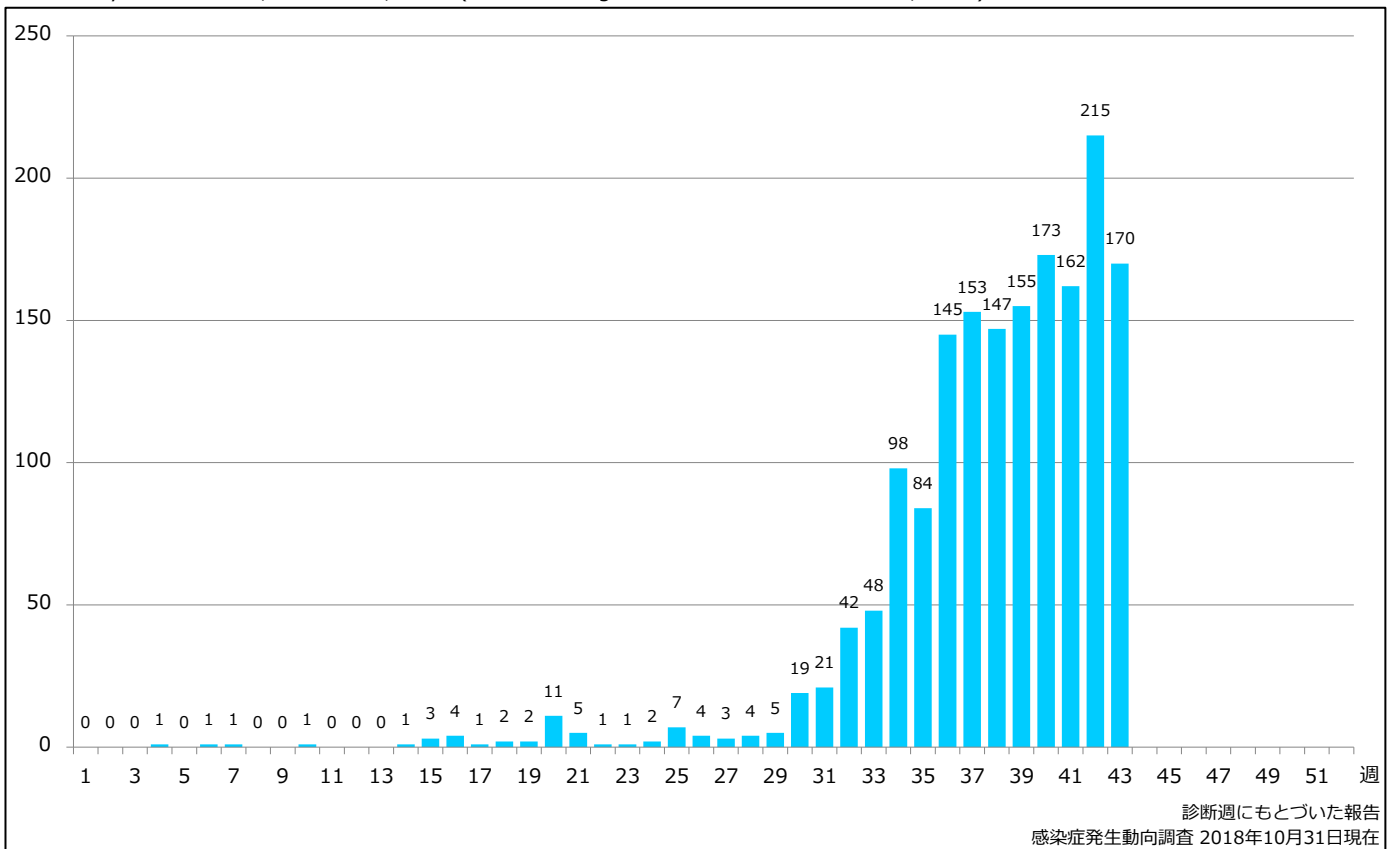
1. 風しん累積報告数の推移 2012～2018年 (第1～43週)

Cumulative rubella cases by week, 2012-2018 (week 1-43) (based on diagnosed week as of October 31, 2018)



2. 週別風しん報告数 2018年 第1～43週 (n=1692)

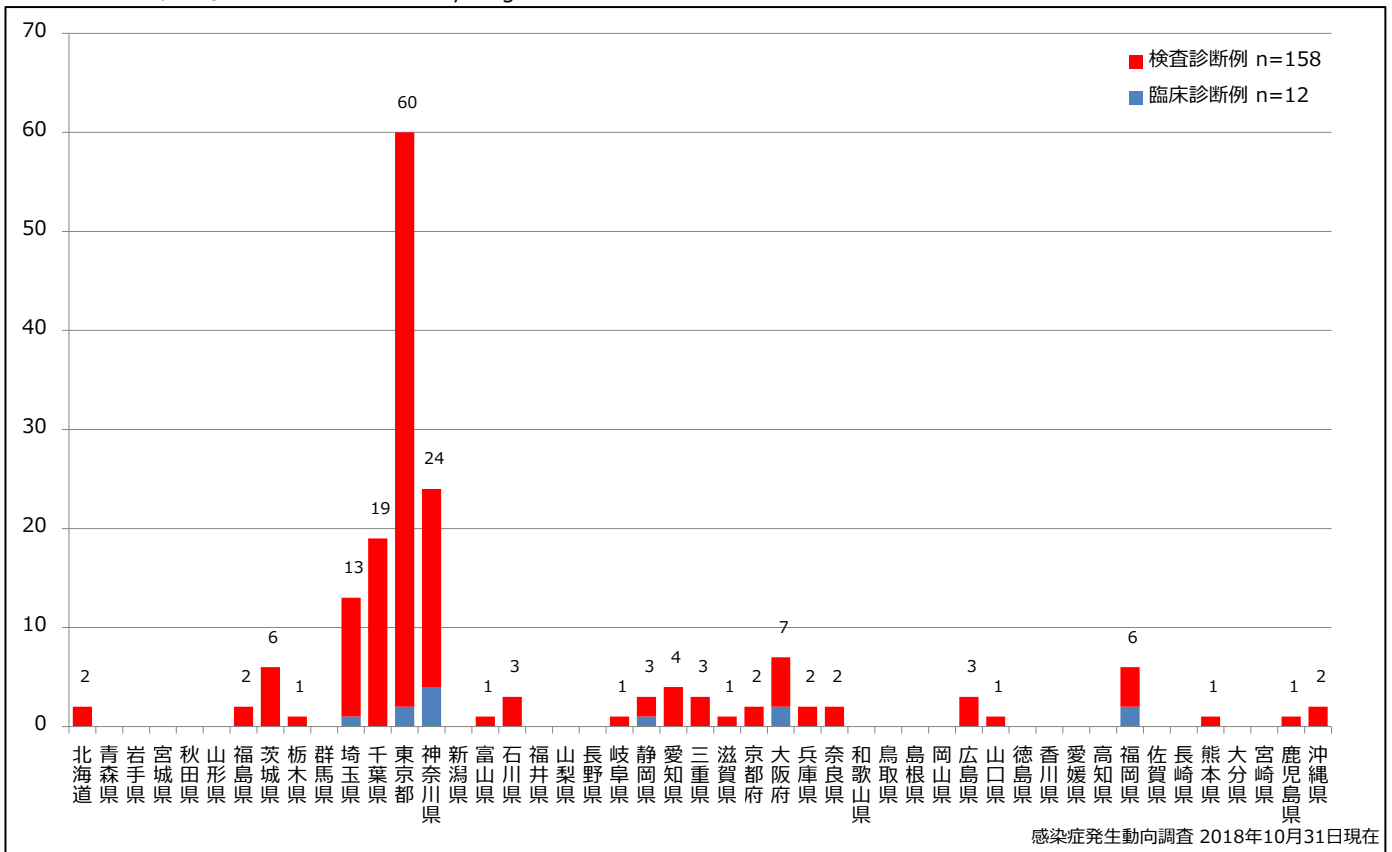
Weekly rubella cases, week 1-43, 2018 (based on diagnosed week as of October 31, 2018)



3. 都道府県別病型別風しん報告数 2018年 第43週 (n=170)

Reported rubella cases by prefecture and methods of diagnosis in week 43, 2018 (as of October 31, 2018)

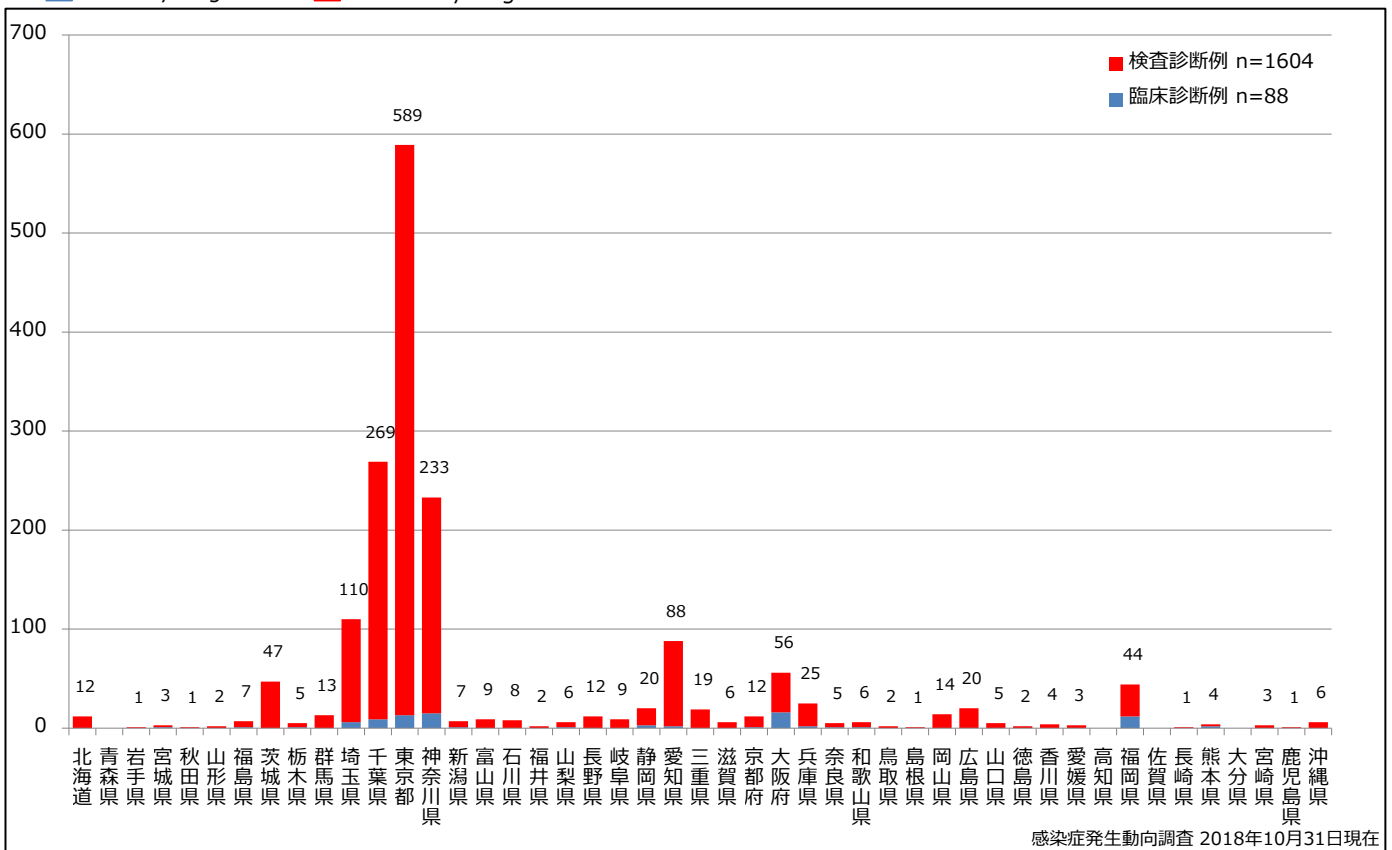
■ Clinically diagnosed ■ Laboratory diagnosed



4. 都道府県別病型別風しん累積報告数 2018年 第1~43週 (n=1692)

Cumulative rubella cases by prefecture and methods of diagnosis, week 1-43, 2018 (as of October 31, 2018)

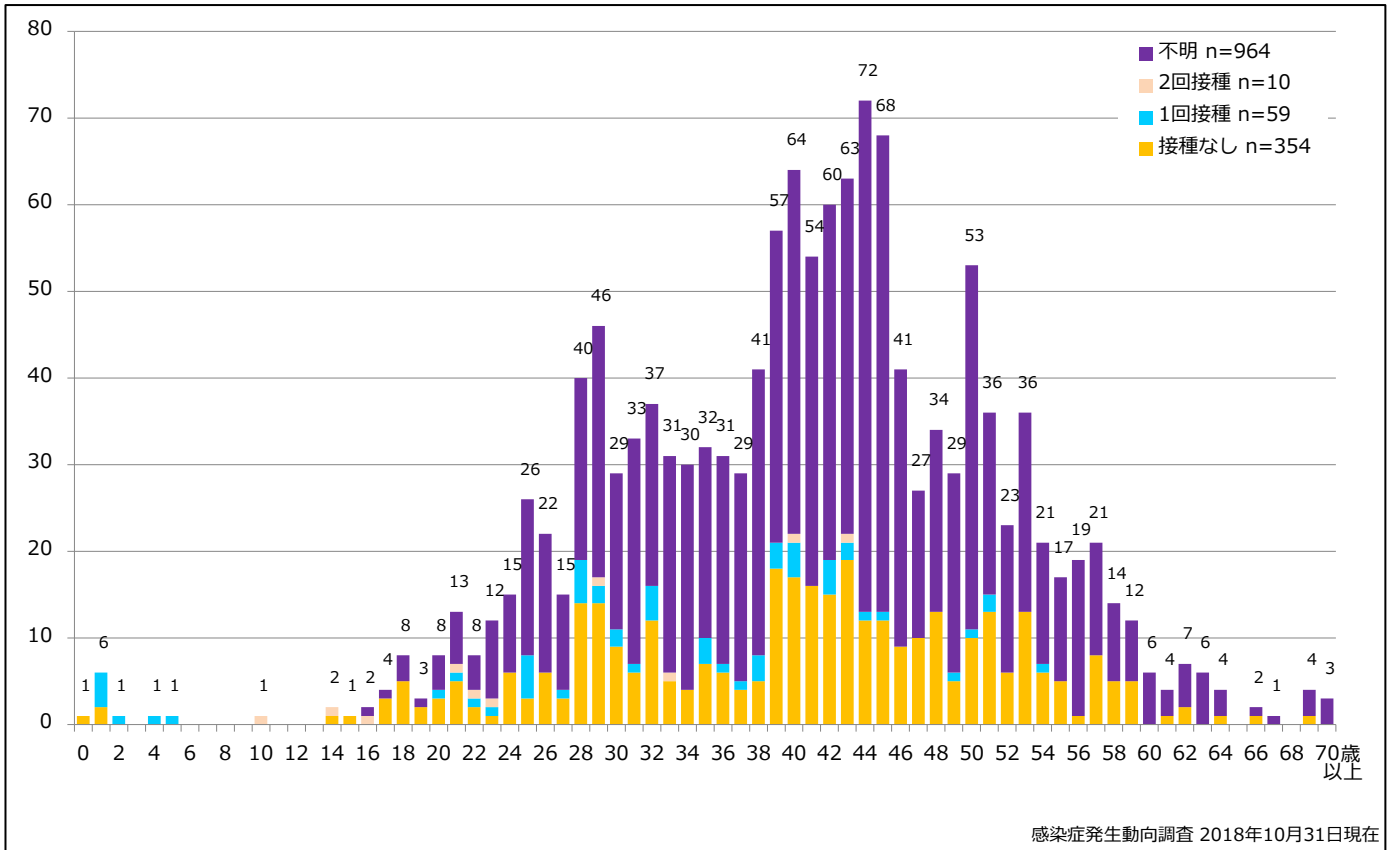
■ Clinically diagnosed ■ Laboratory diagnosed



5-1. 年齢群別接種歴別風しん累積報告数 (男性) 2018年 第1~43週 (n=1387)

Cumulative rubella cases (male) by age and vaccinated status, week 1-43, 2018 (as of October 31, 2018)

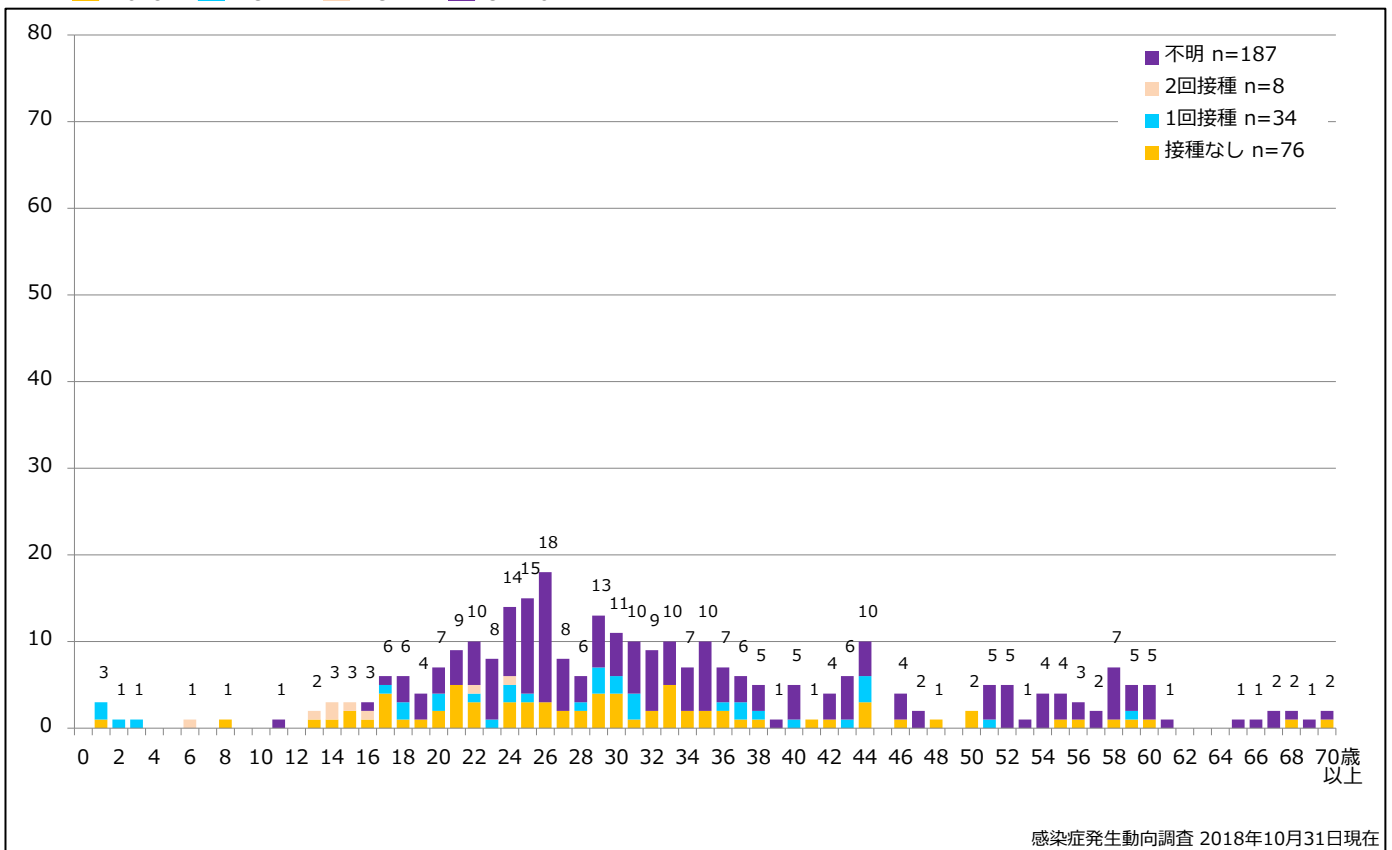
None RCV1 RCV2 Unknown



5-2. 年齢群別接種歴別風しん累積報告数 (女性) 2018年 第1~43週 (n=305)

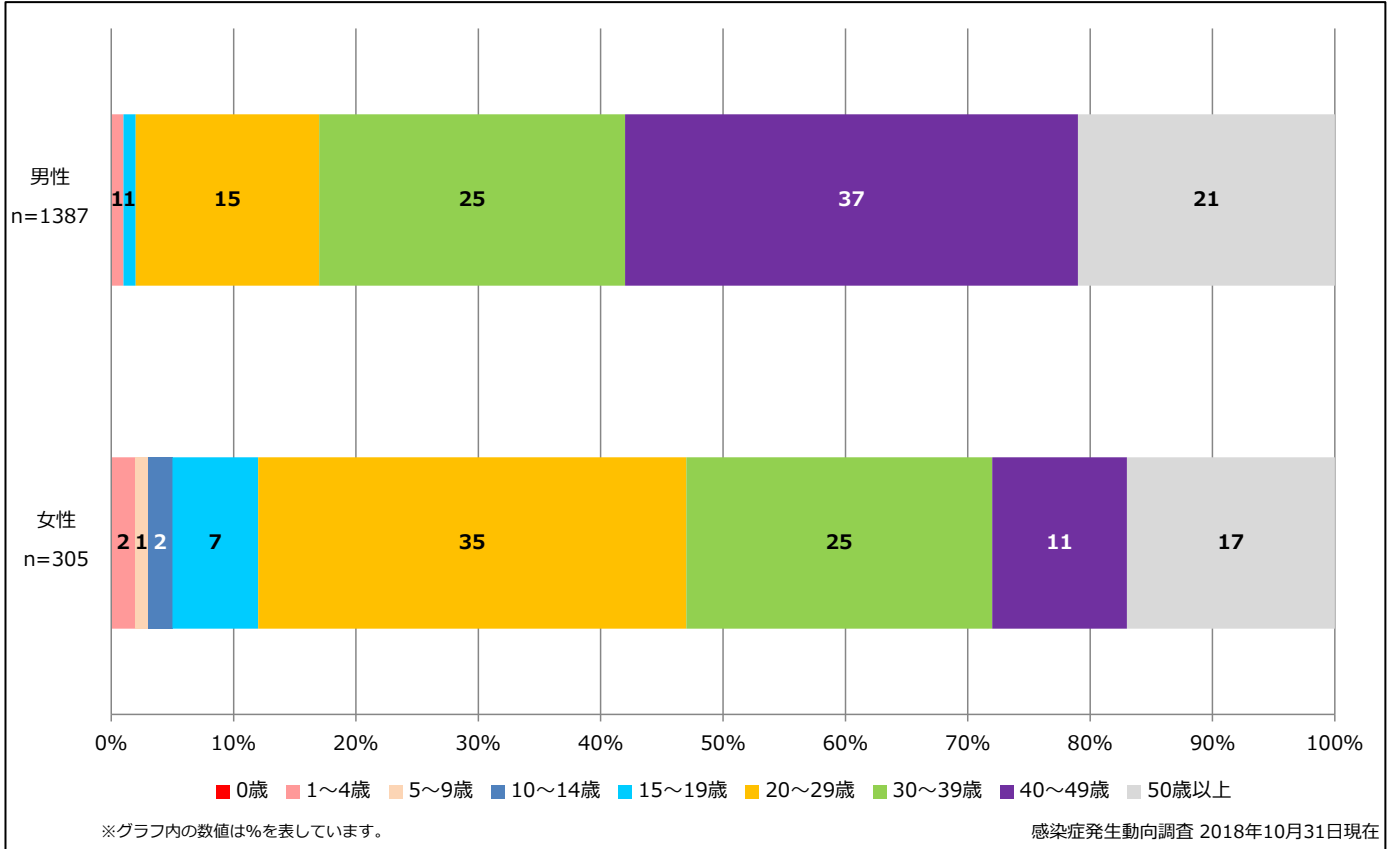
Cumulative rubella cases (female) by age and vaccinated status, week 1-43, 2018 (as of October 31, 2018)

None RCV1 RCV2 Unknown



6. 年齢群別風しん累積報告数割合 (男女別) 2018年 第1~43週 (n=1692)

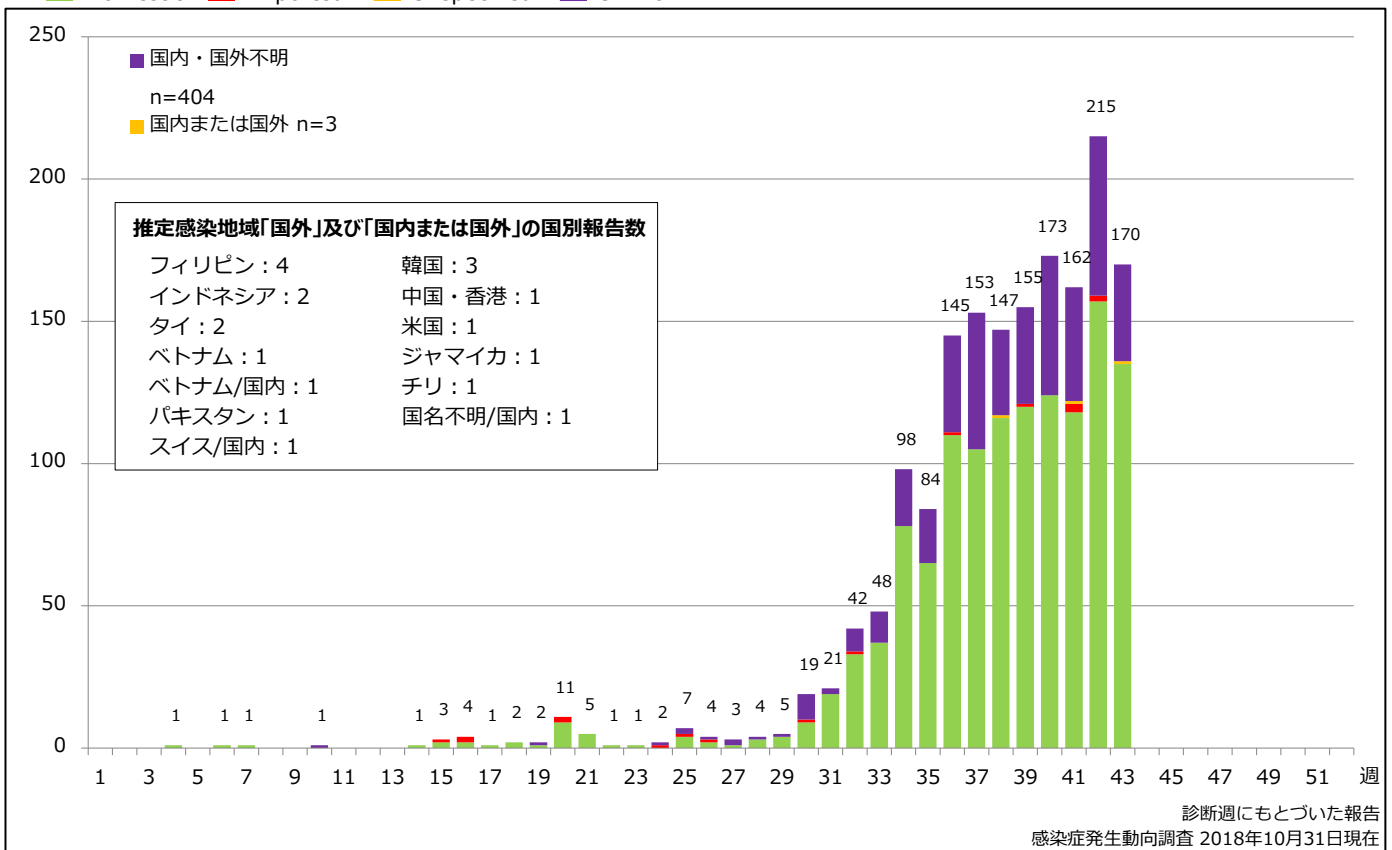
Percentage of cumulative rubella cases (upper: male, bottom: female) by age group, week 1-43, 2018 (as of October 31, 2018)



7. 週別推定感染地域(国内・外)別風しん報告数 2018年 第1~43週 (n=1692)

Weekly rubella cases by acquired region, week 1-43, 2018 (based on diagnosed week as of October 31, 2018)

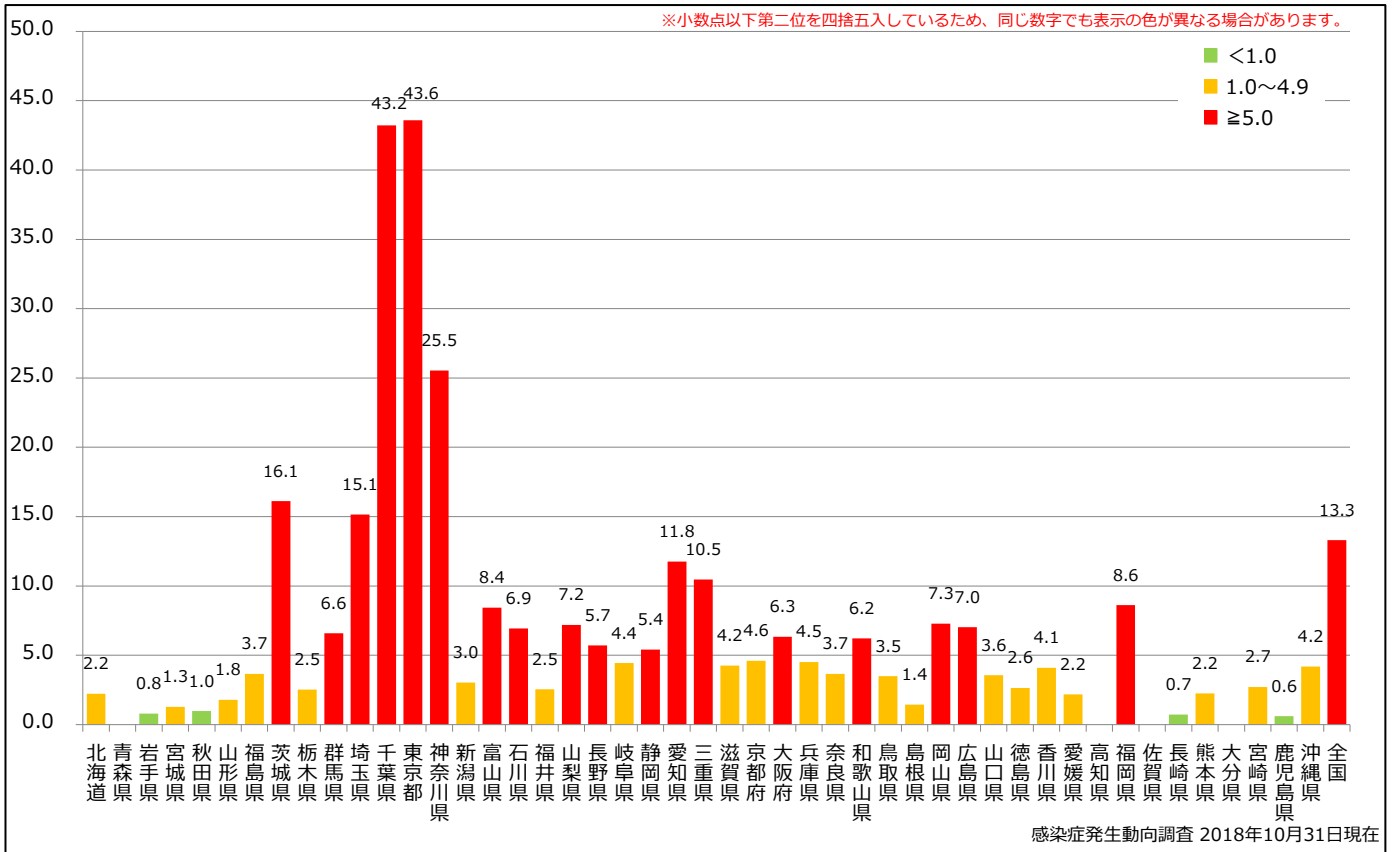
Domestic Imported Unspecified Unknown



8. 都道府県別人口百万人あたり風しん報告数 2018年 第1~43週 (n=1692)

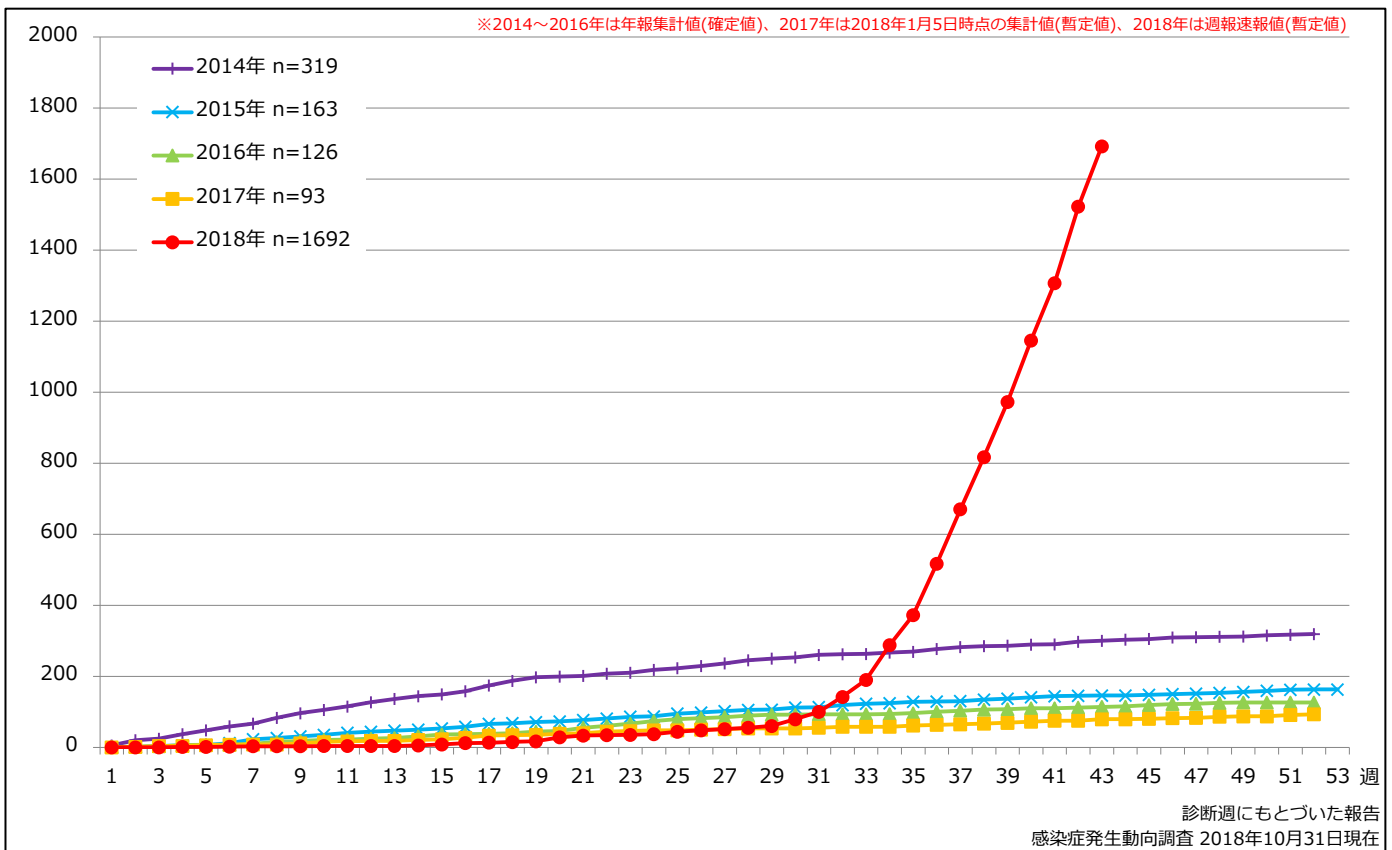
Reported rubella cases per 1 million population by prefecture, week 1-43, 2018 (as of October 31, 2018)

■ <1.0 ■ 1.0~4.9 ■ ≥5.0



追補. 風しん累積報告数の推移 2014~2018年 (第1~43週)

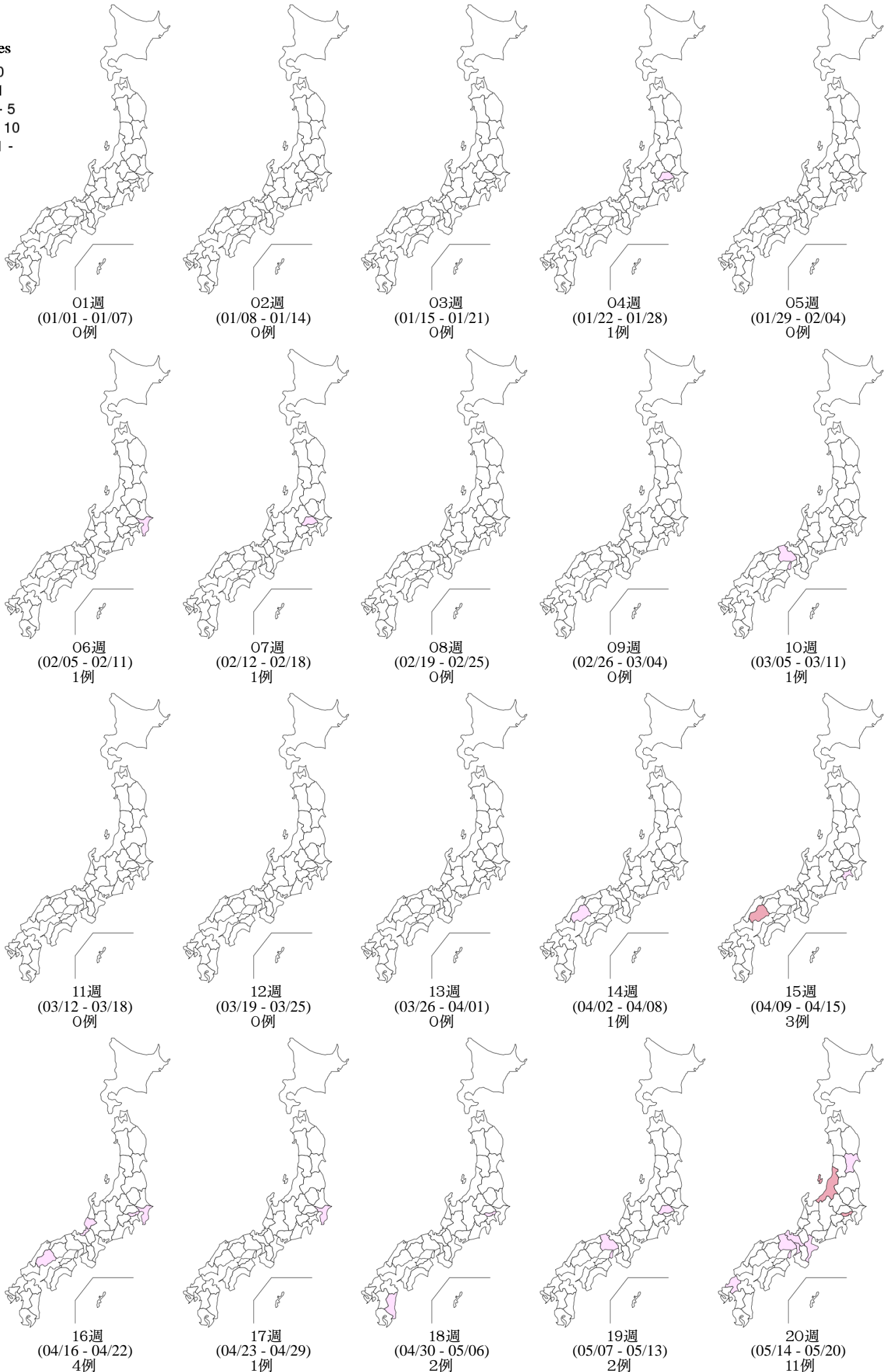
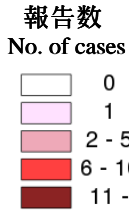
Cumulative rubella cases by week, 2014-2018 (week 1-43) (based on diagnosed week as of October 31, 2018)



9. 都道府県別風しん週別報告状況 2018年 第1~43週 感染症発生動向調査

2018年10月31日現在

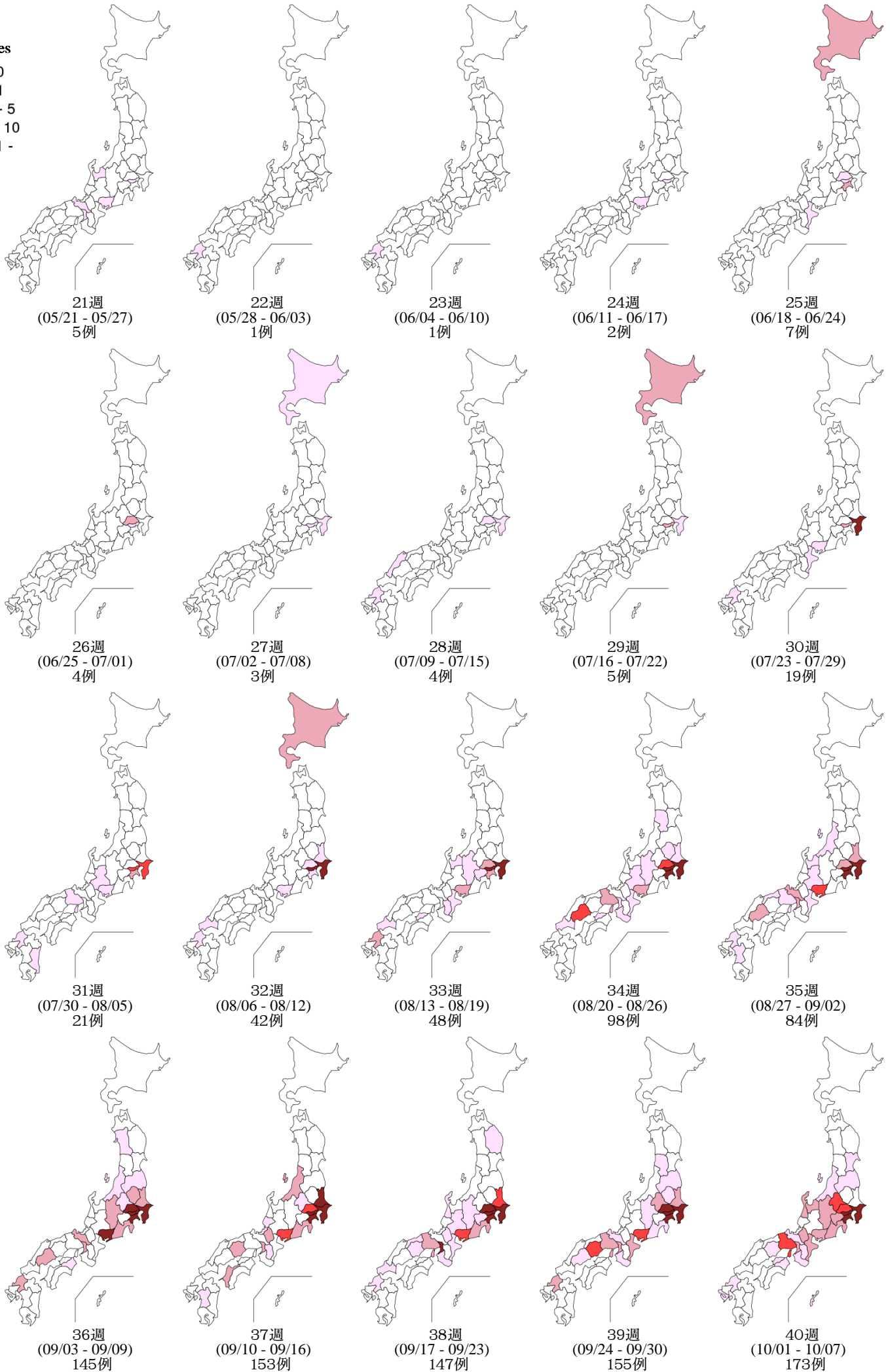
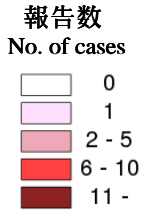
Weekly rubella cases from week 01 to week 43, 2018 (based on diagnosed week as of October 31, 2018)



9. 都道府県別風しん週別報告状況 2018年 第1~43週 感染症発生動向調査

2018年10月31日現在

Weekly rubella cases from week 01 to week 43, 2018 (based on diagnosed week as of October 31, 2018)



9. 都道府県別風しん週別報告状況 2018年 第1~43週 感染症発生動向調査

2018年10月31日現在

Weekly rubella cases from week 01 to week 43, 2018 (based on diagnosed week as of October 31, 2018)

報告数
No. of cases

