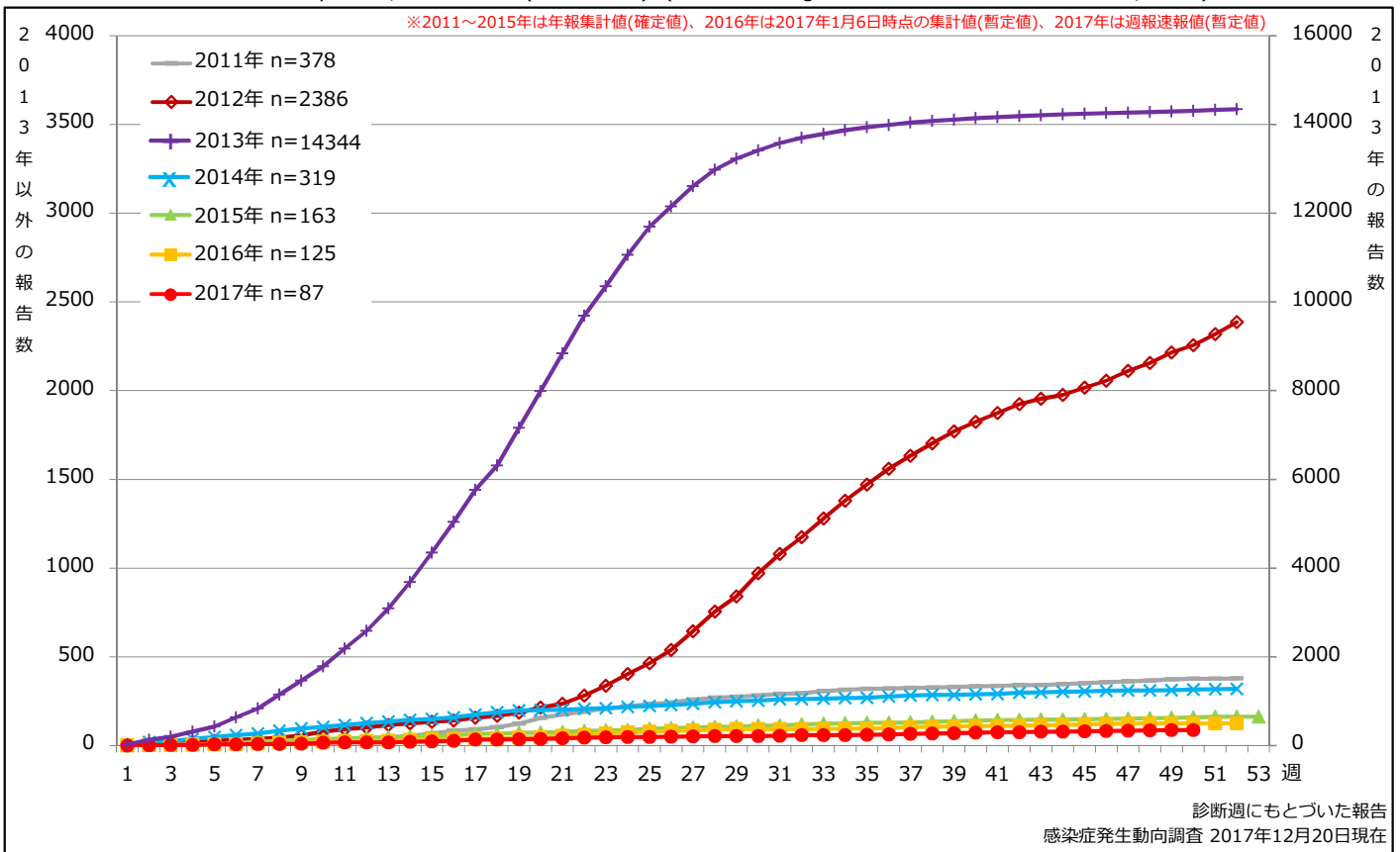


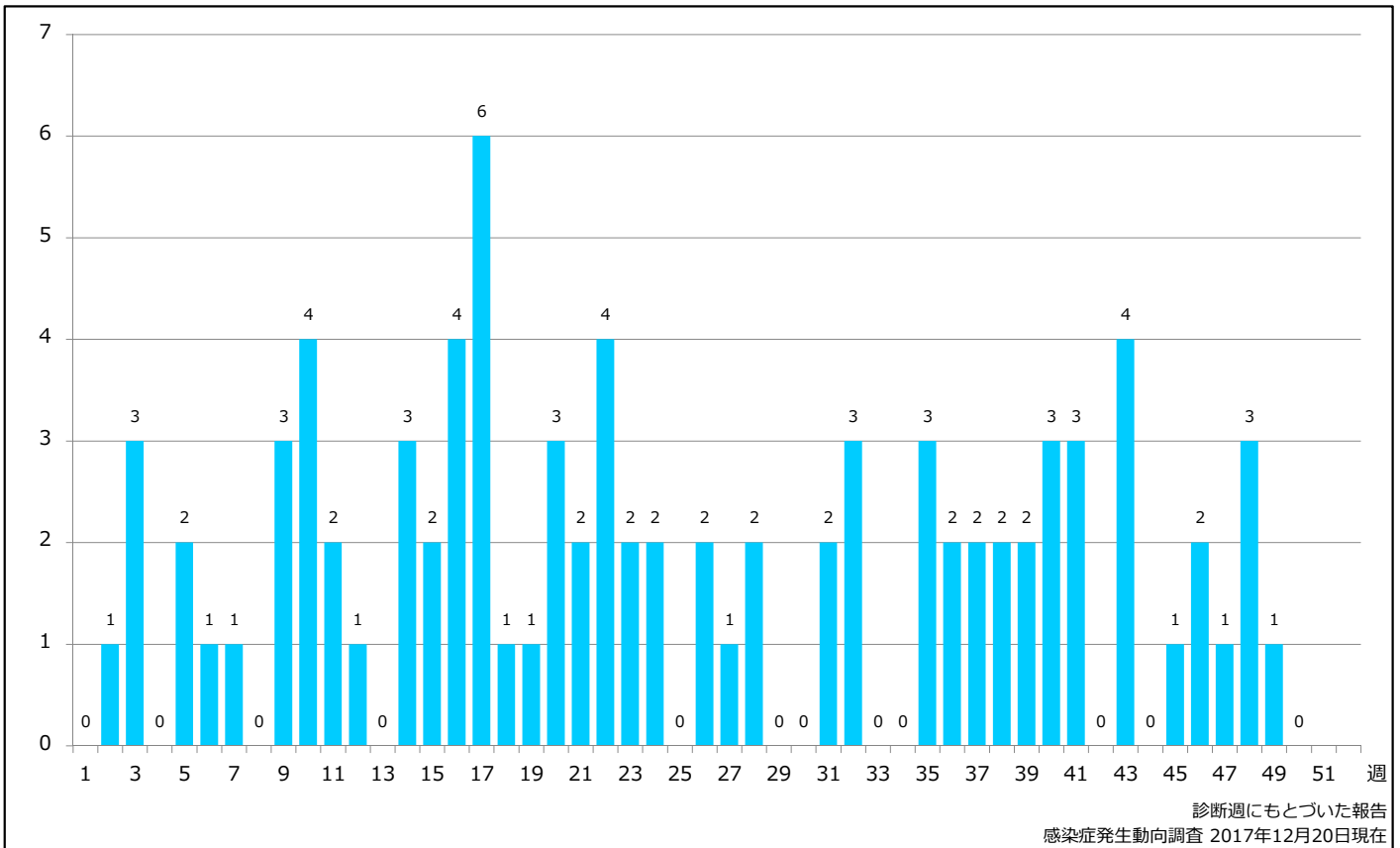
1. 風しん累積報告数の推移 2011~2017年 (第1~50週)

Cumulative rubella cases by week, 2011-2017 (week 1-50) (based on diagnosed week as of December 20, 2017)



2. 週別風しん報告数 2017年 第1~50週 (n=87)

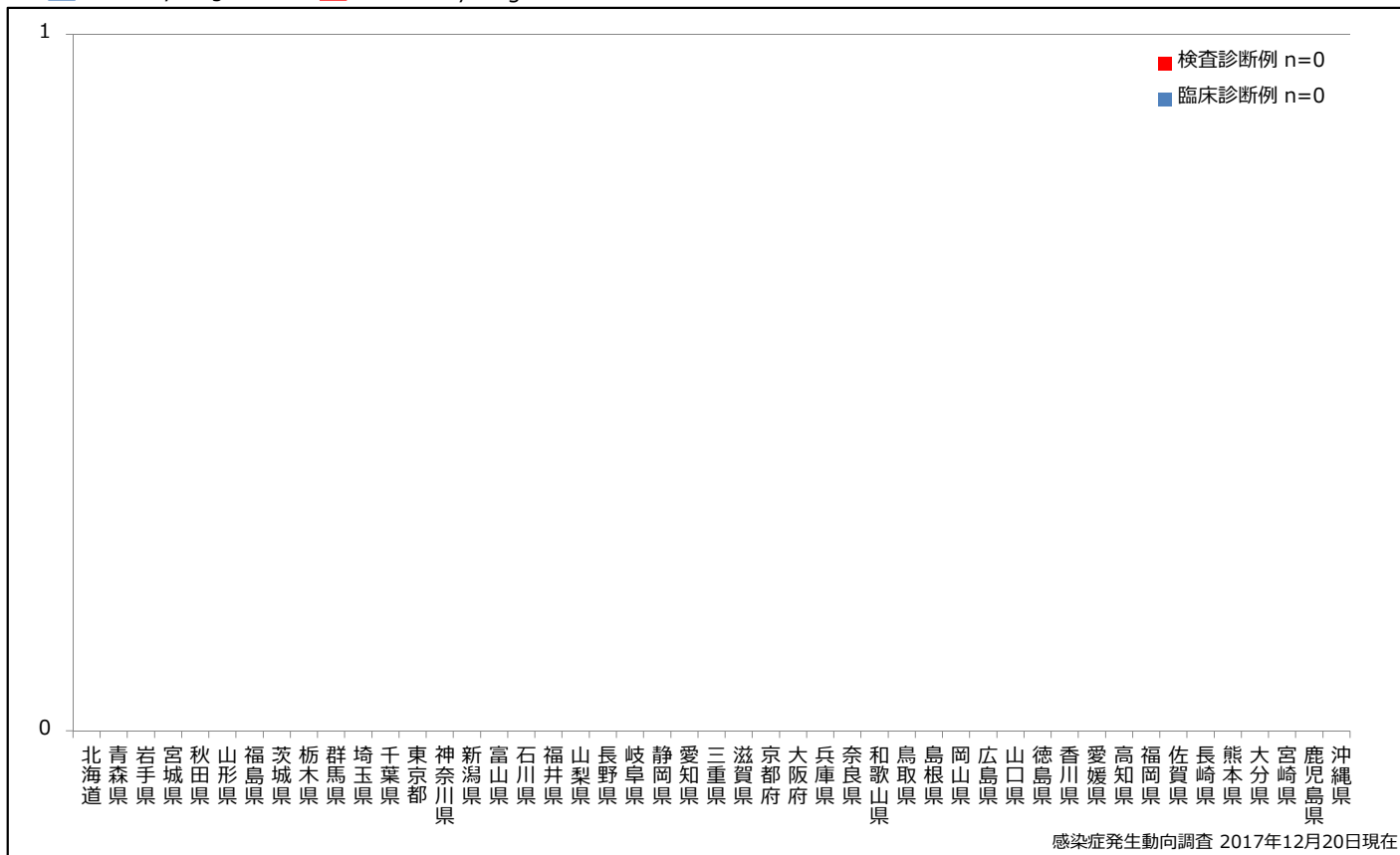
Weekly rubella cases, week 1-50, 2017 (based on diagnosed week as of December 20, 2017)



3. 都道府県別病型別風しん報告数 2017年 第50週 (n=0)

Reported rubella cases by prefecture and methods of diagnosis in week 50, 2017 (as of December 20, 2017)

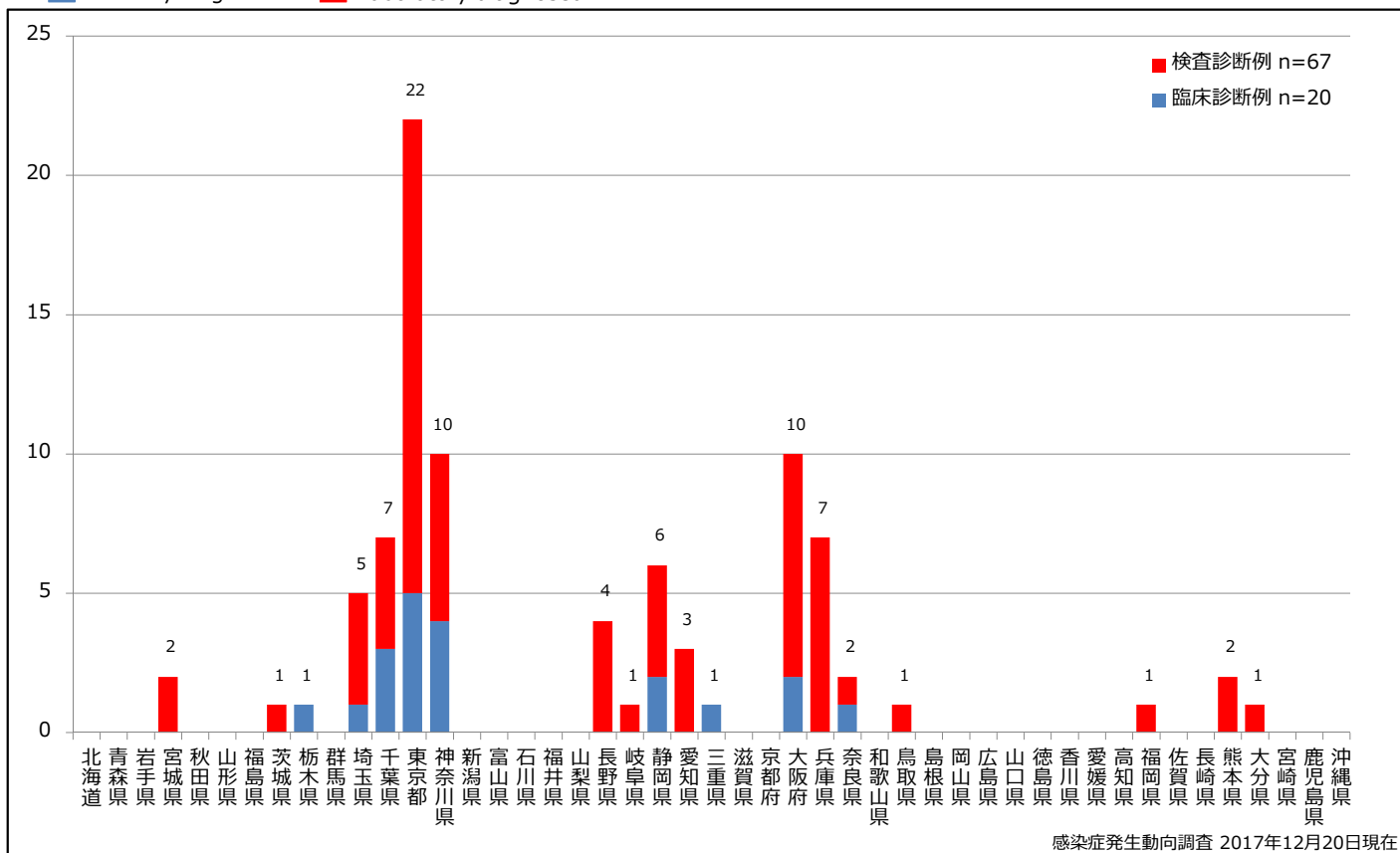
■ Clinically diagnosed ■ Laboratory diagnosed



4. 都道府県別病型別風しん累積報告数 2017年 第1~50週 (n=87)

Cumulative rubella cases by prefecture and methods of diagnosis, week 1-50, 2017 (as of December 20, 2017)

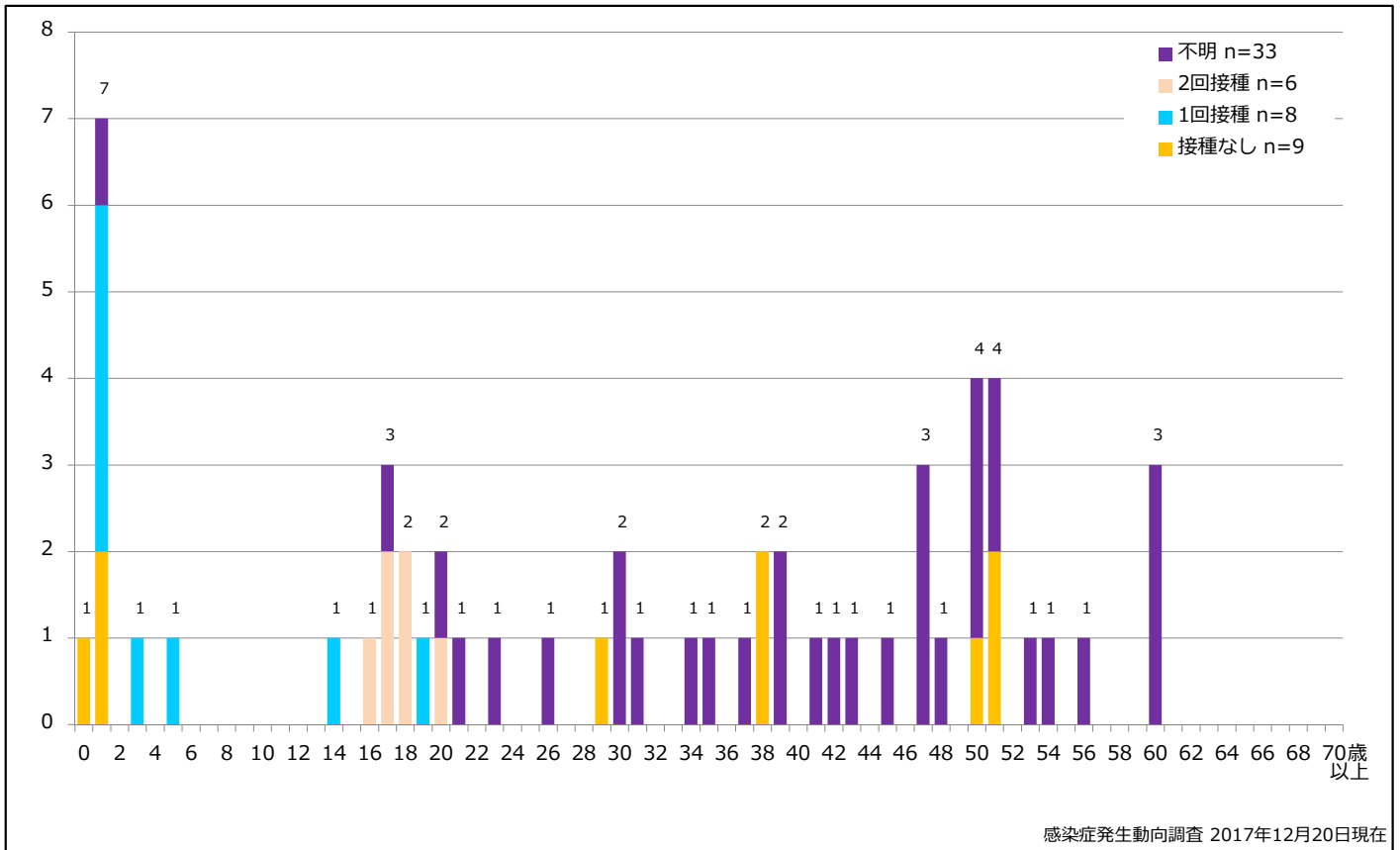
■ Clinically diagnosed ■ Laboratory diagnosed



5-1. 年齢群別接種歴別風しん累積報告数 (男性) 2017年 第1~50週 (n=56)

Cumulative rubella cases (male) by age and vaccinated status, week 1-50, 2017 (as of December 20, 2017)

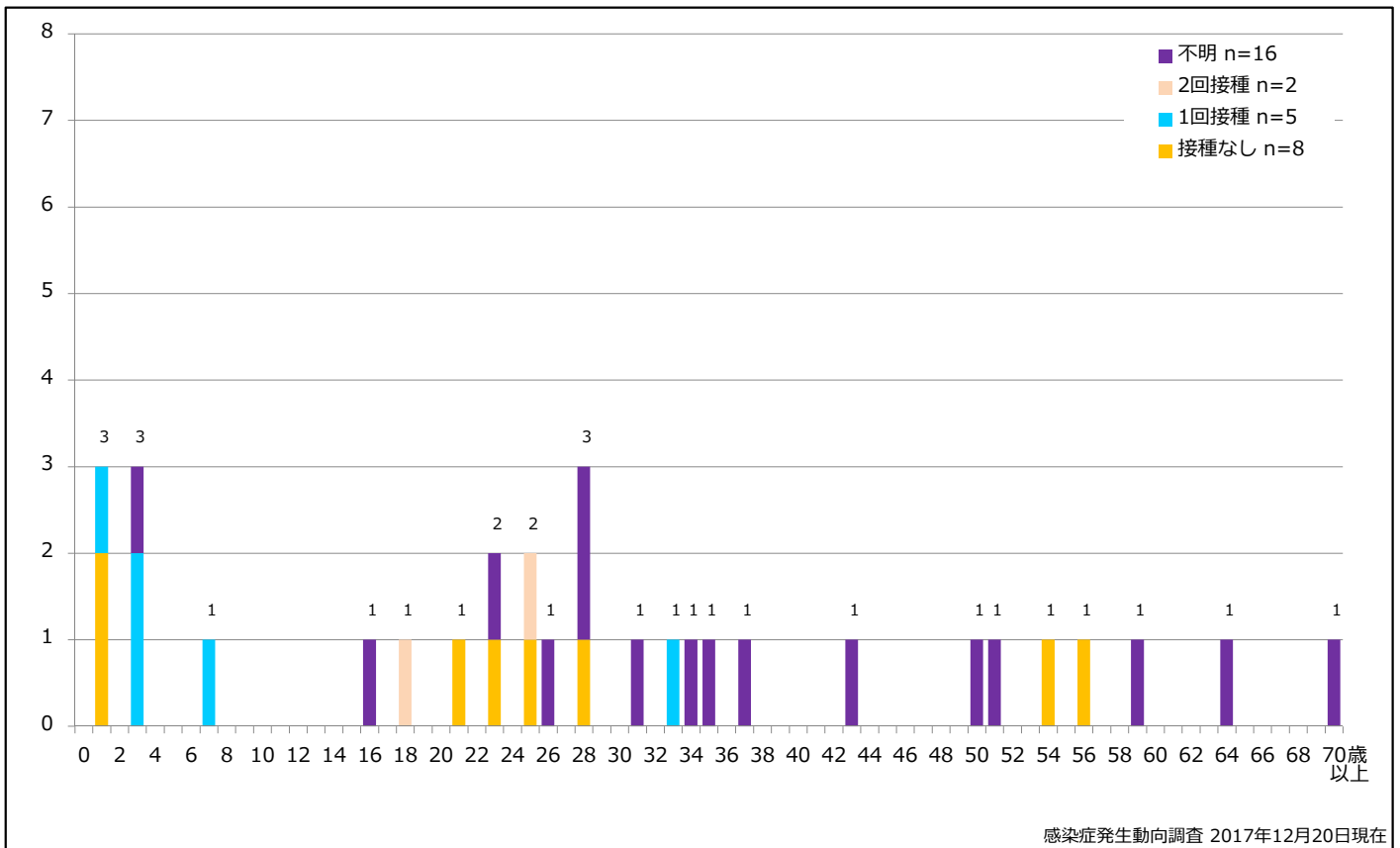
None RCV1 RCV2 Unknown



5-2. 年齢群別接種歴別風しん累積報告数 (女性) 2017年 第1~50週 (n=31)

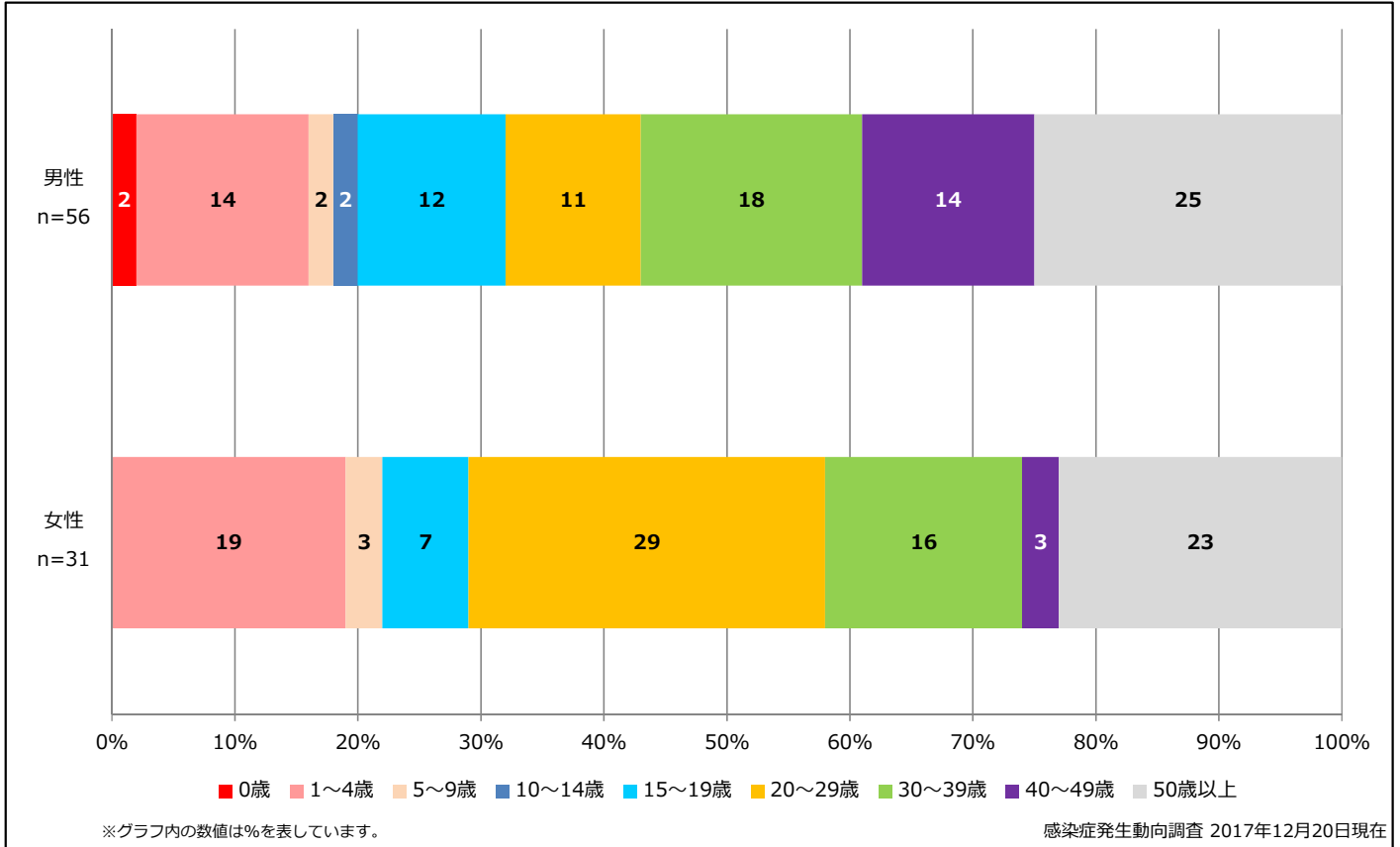
Cumulative rubella cases (female) by age and vaccinated status, week 1-50, 2017 (as of December 20, 2017)

None RCV1 RCV2 Unknown



6. 年齢群別風しん累積報告数割合 (男女別) 2017年 第1~50週 (n=87)

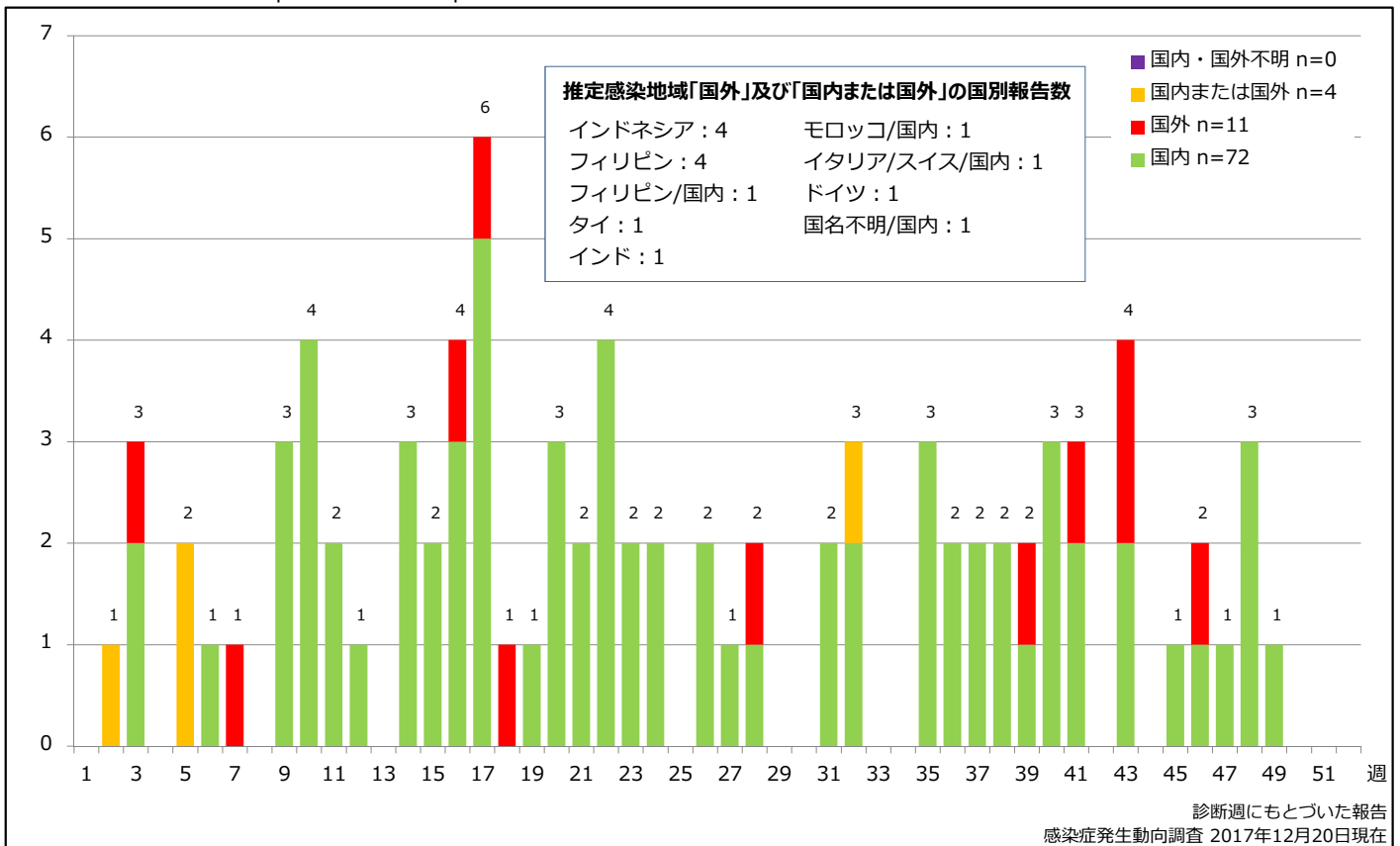
Percentage of cumulative rubella cases (upper: male, bottom: female) by age group, week 1-50, 2017 (as of December 20, 2017)



7. 週別推定感染地域(国内・外)別風しん報告数 2017年 第1~50週 (n=87)

Weekly rubella cases by acquired region, week 1-50, 2017 (based on diagnosed week as of December 20, 2017)

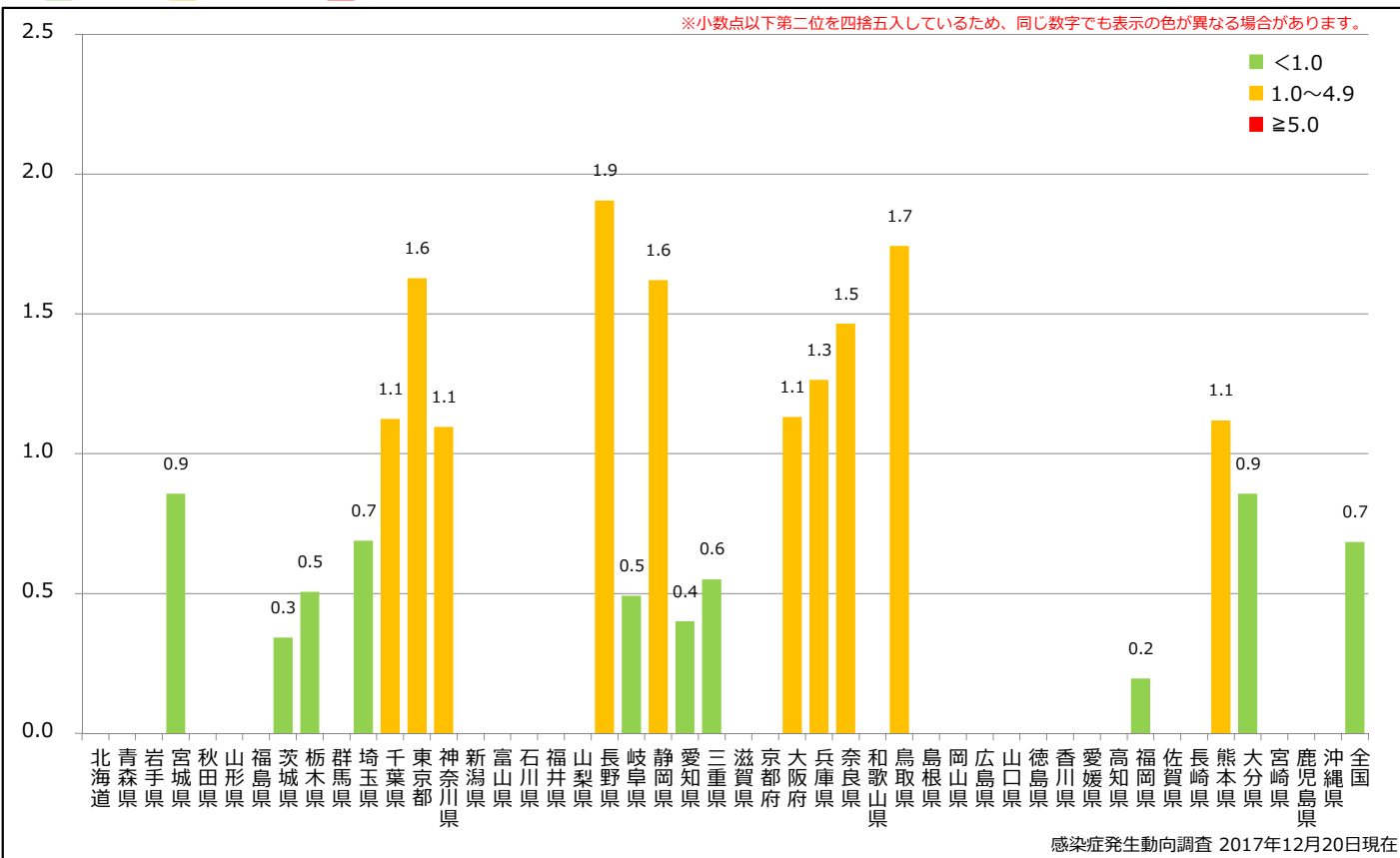
Domestic Imported Unspecified Unknown



8. 都道府県別人口百万人あたり風しん報告数 2017年 第1~50週 (n=87)

Reported rubella cases per 1 million population by prefecture, week 1-50, 2017 (as of December 20, 2017)

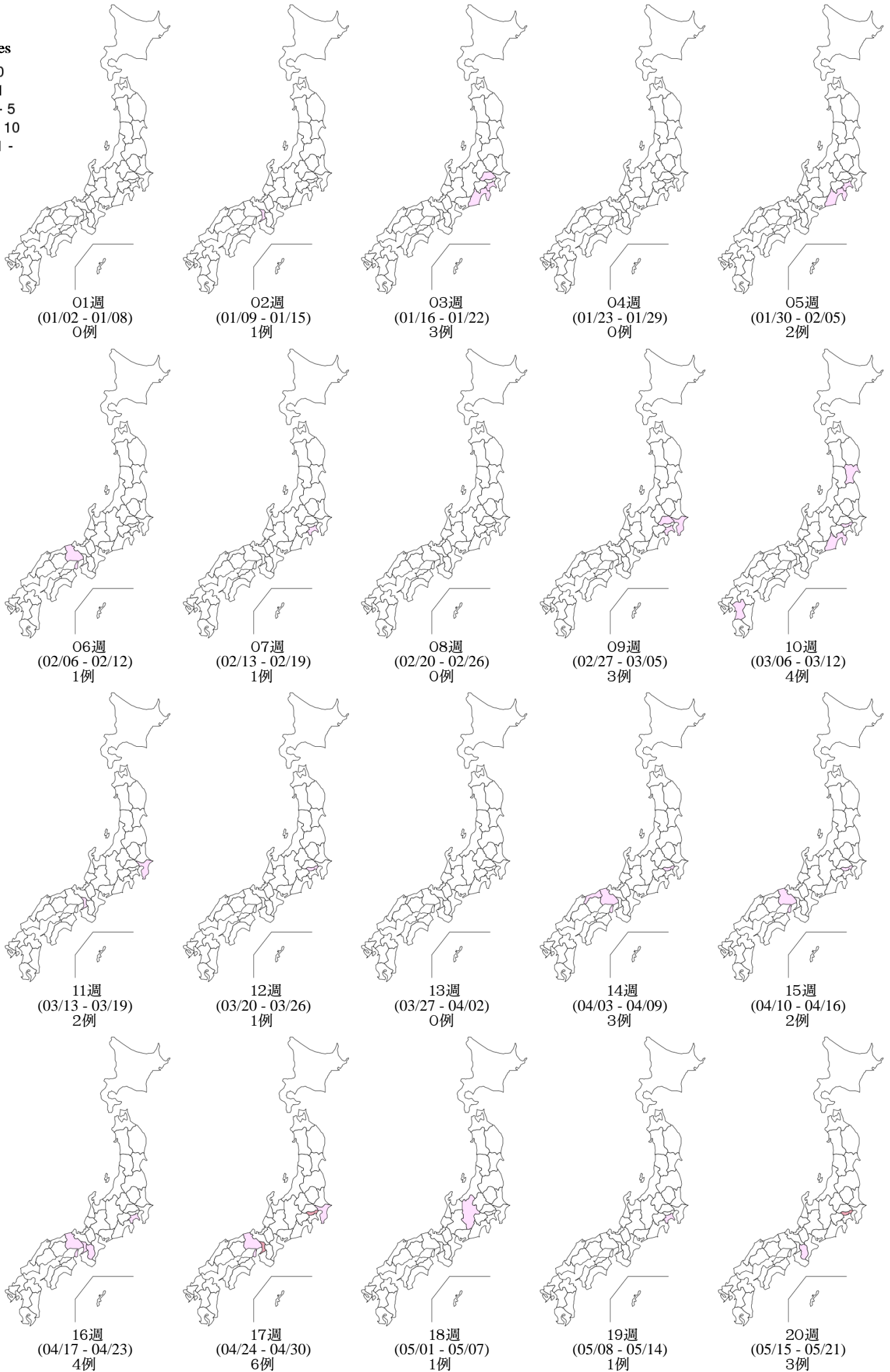
■ <1.0 ■ 1.0~4.9 ■ ≥5.0



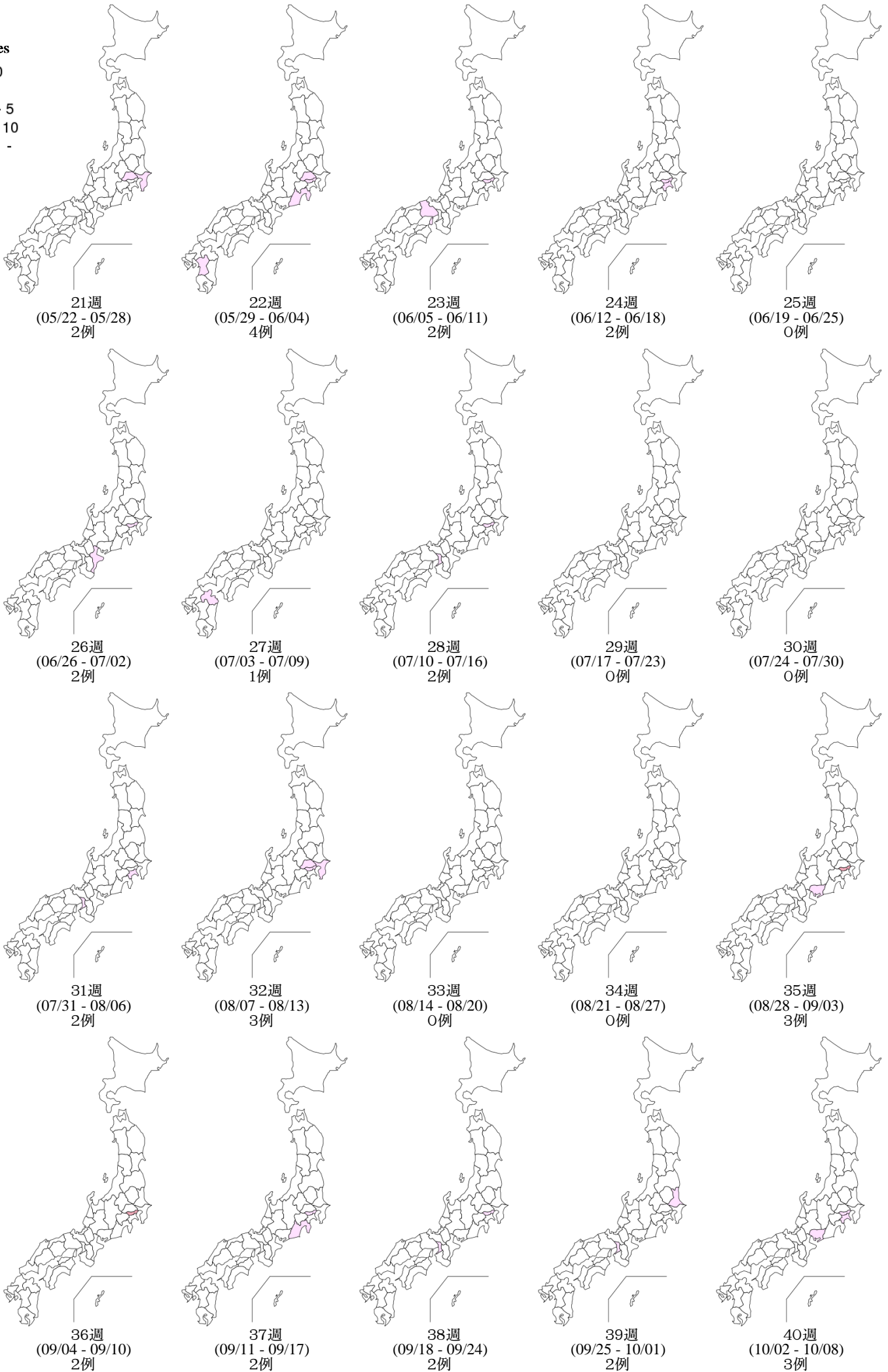
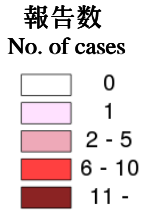
9. 都道府県別風しん週別報告状況 2017年 第1~50週 感染症発生動向調査

2017年12月20日現在

Weekly rubella cases from week 01 to week 50, 2017 (based on diagnosed week as of December 20, 2017)



Weekly rubella cases from week 01 to week 50, 2017 (based on diagnosed week as of December 20, 2017)



9. 都道府県別風しん週別報告状況 2017年 第1~50週 感染症発生動向調査

2017年12月20日現在

Weekly rubella cases from week 01 to week 50, 2017 (based on diagnosed week as of December 20, 2017)

