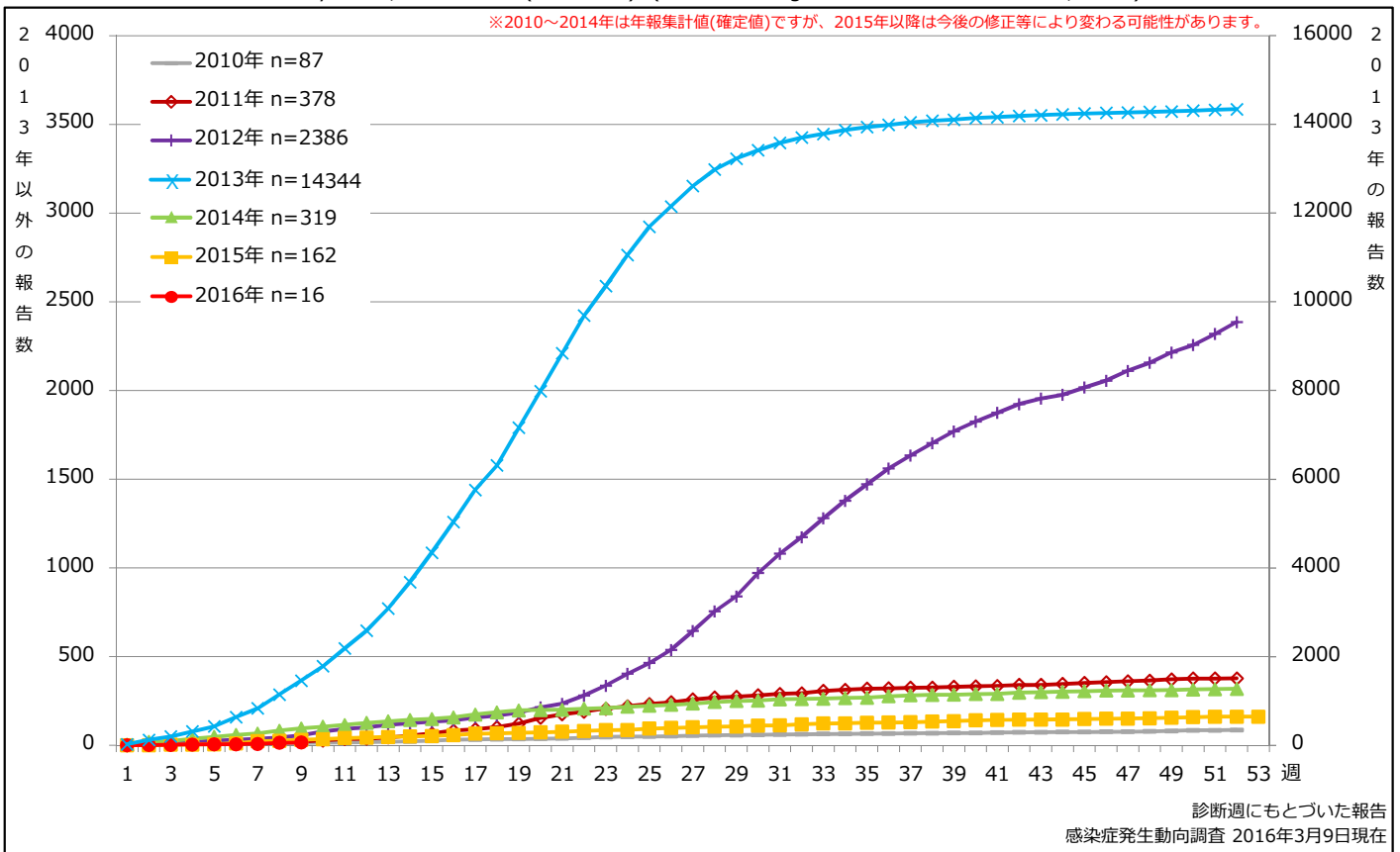


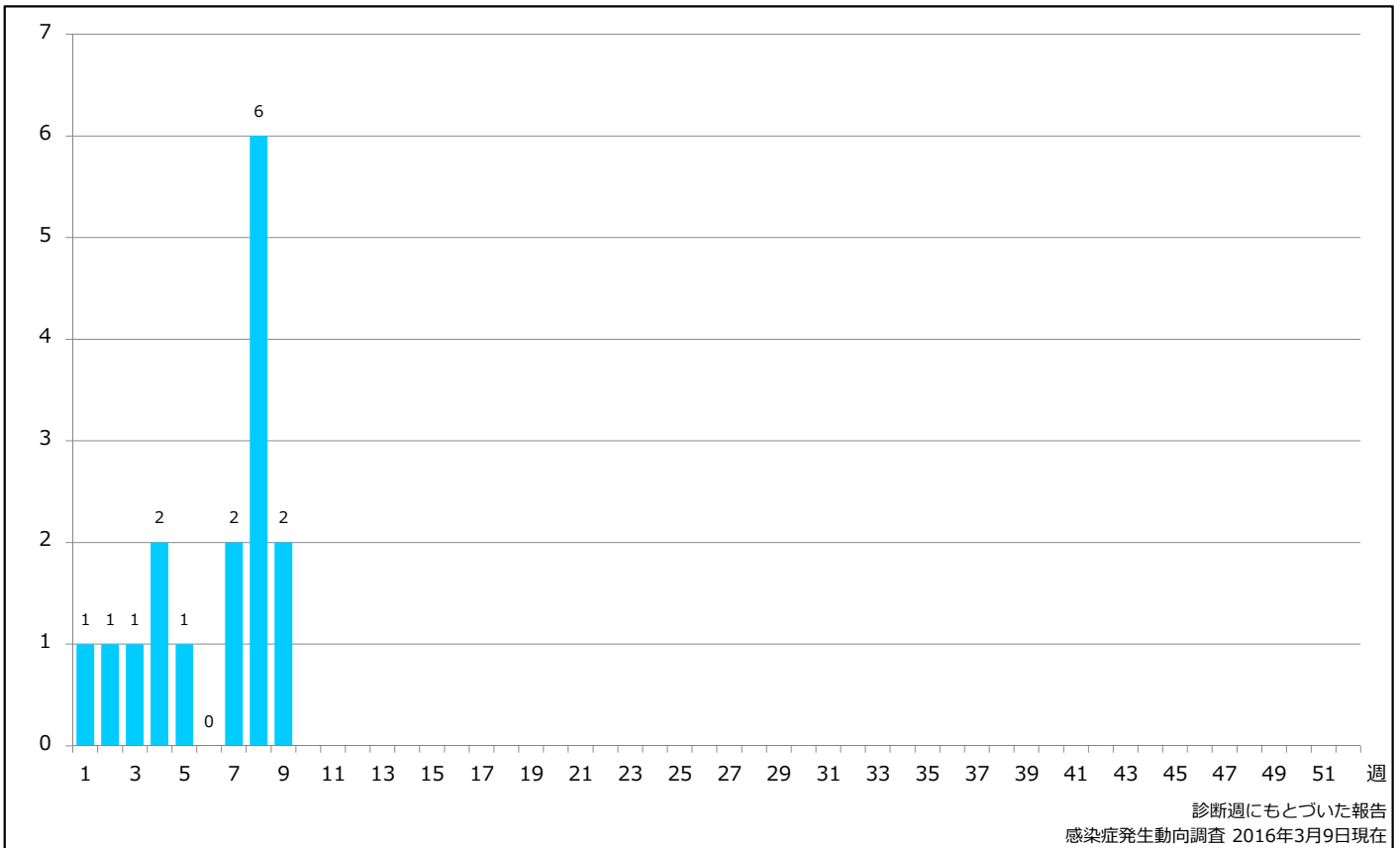
### 1. 風しん累積報告数の推移 2010~2016年 (第1~9週)

Cumulative rubella cases by week, 2010-2016 (week 1-9) (based on diagnosed week as of March 9, 2016)



### 2. 週別風しん報告数 2016年 第1~9週 (n=16)

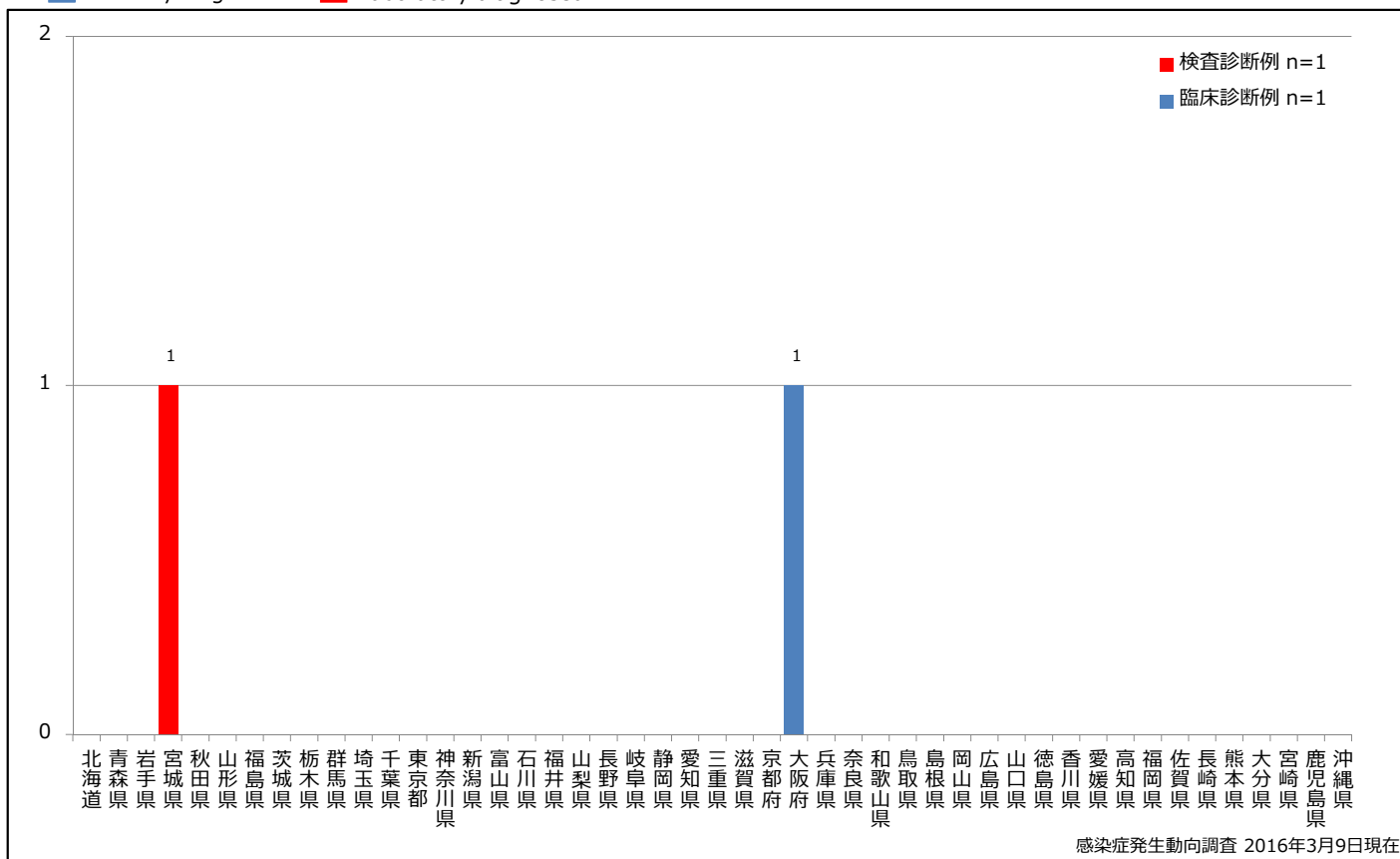
Weekly rubella cases, week 1-9, 2016 (based on diagnosed week as of March 9, 2016)



### 3. 都道府県別病型別風しん報告数 2016年 第9週 (n=2)

Reported rubella cases by prefecture and methods of diagnosis in week 9, 2016 (as of March 9, 2016)

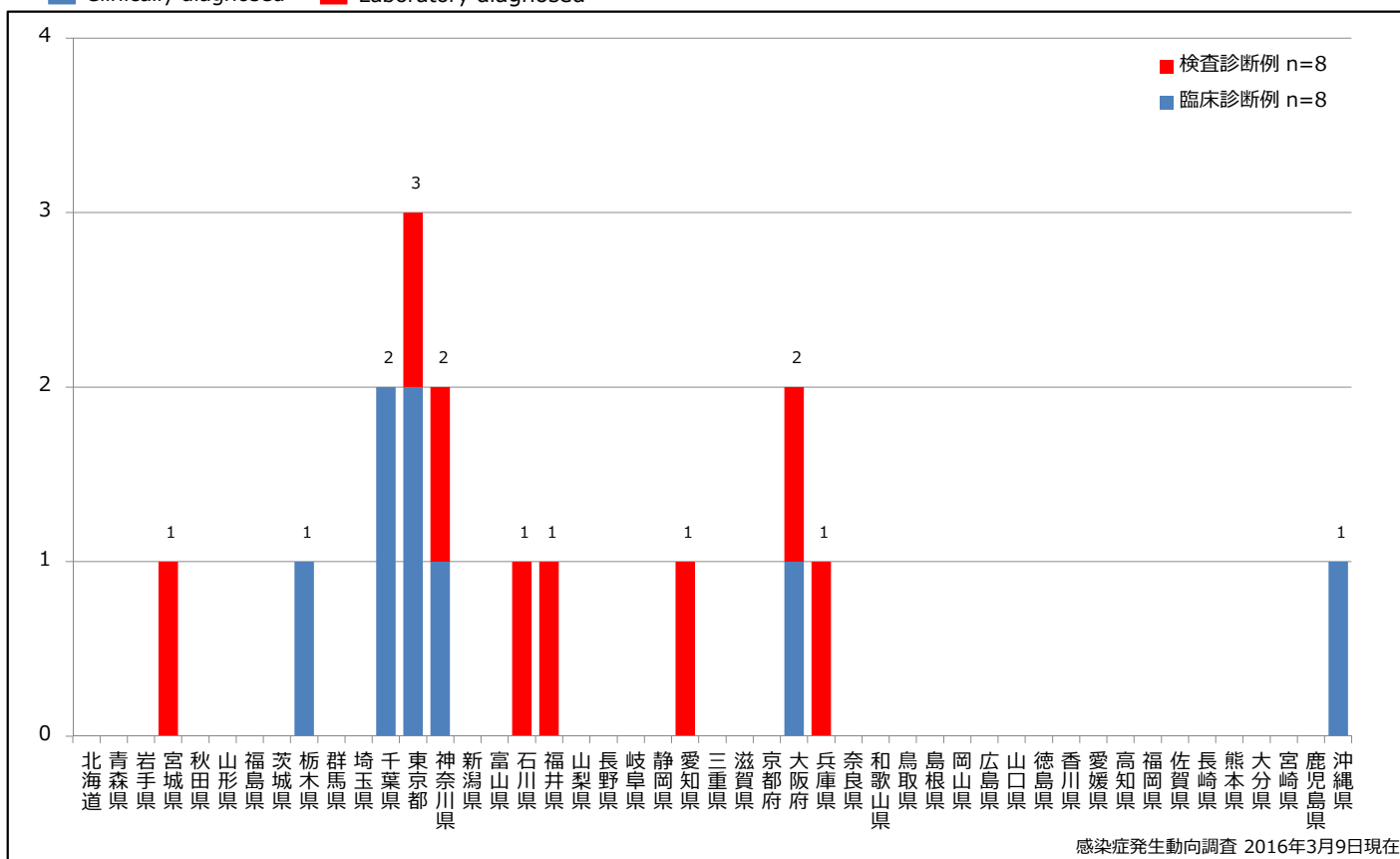
■ Clinically diagnosed ■ Laboratory diagnosed



### 4. 都道府県別病型別風しん累積報告数 2016年 第1~9週 (n=16)

Cumulative rubella cases by prefecture and methods of diagnosis, week 1-9, 2016 (as of March 9, 2016)

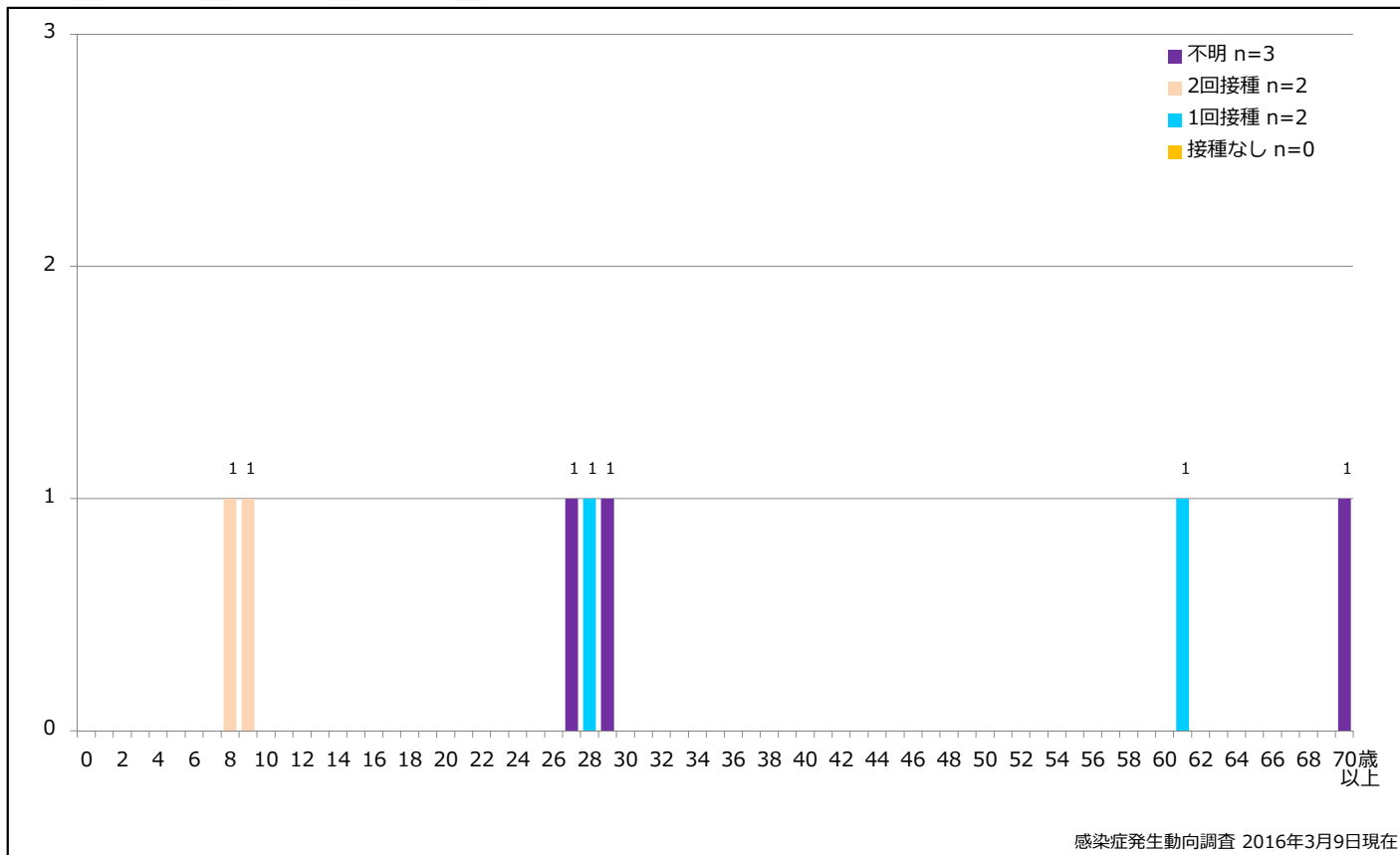
■ Clinically diagnosed ■ Laboratory diagnosed



### 5-1. 年齢群別接種歴別風しん累積報告数 (男性) 2016年 第1~9週 (n=7)

Cumulative rubella cases (male) by age and vaccinated status, week 1-9, 2016 (as of March 9, 2016)

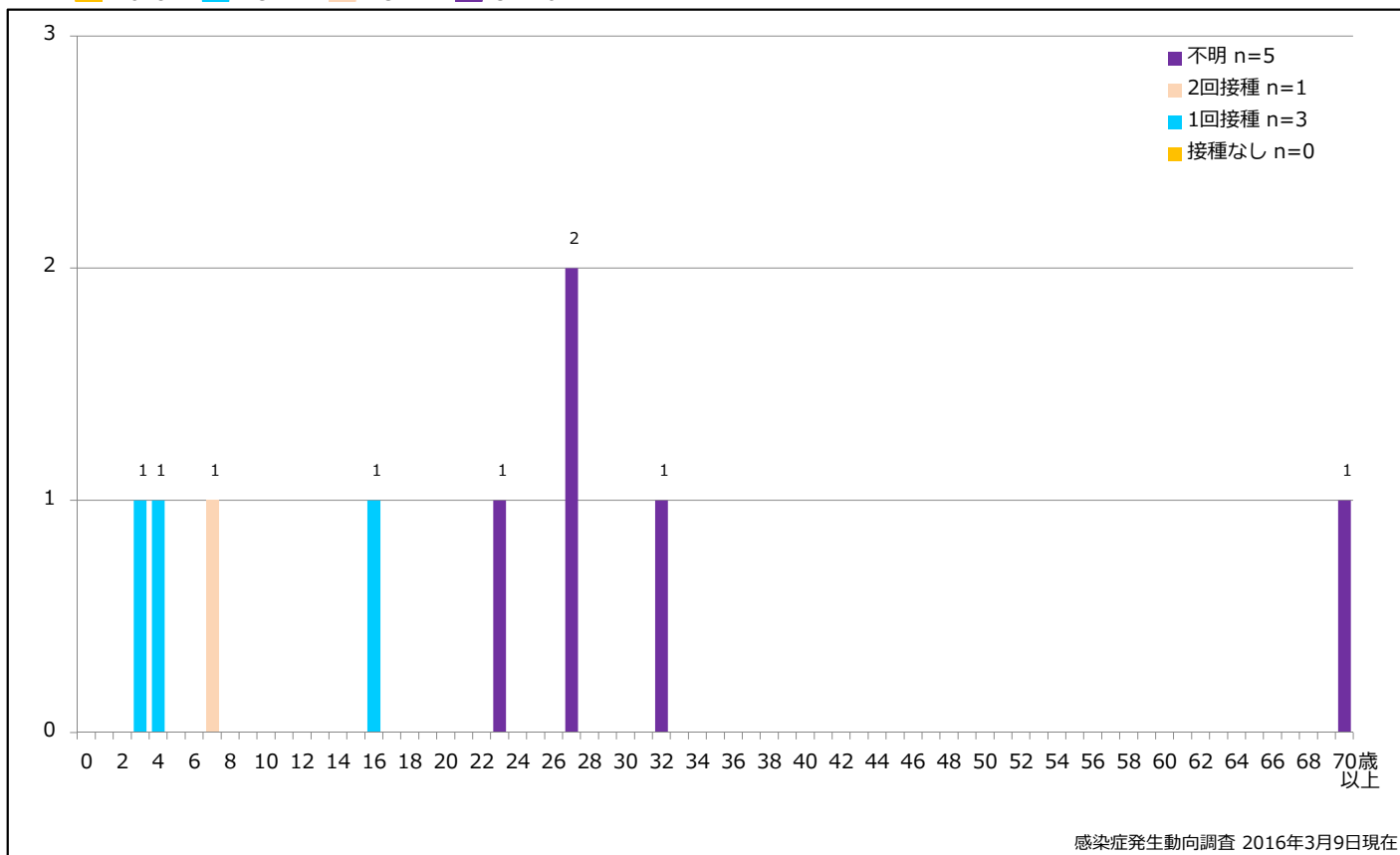
None RCV1 RCV2 Unknown



### 5-2. 年齢群別接種歴別風しん累積報告数 (女性) 2016年 第1~9週 (n=9)

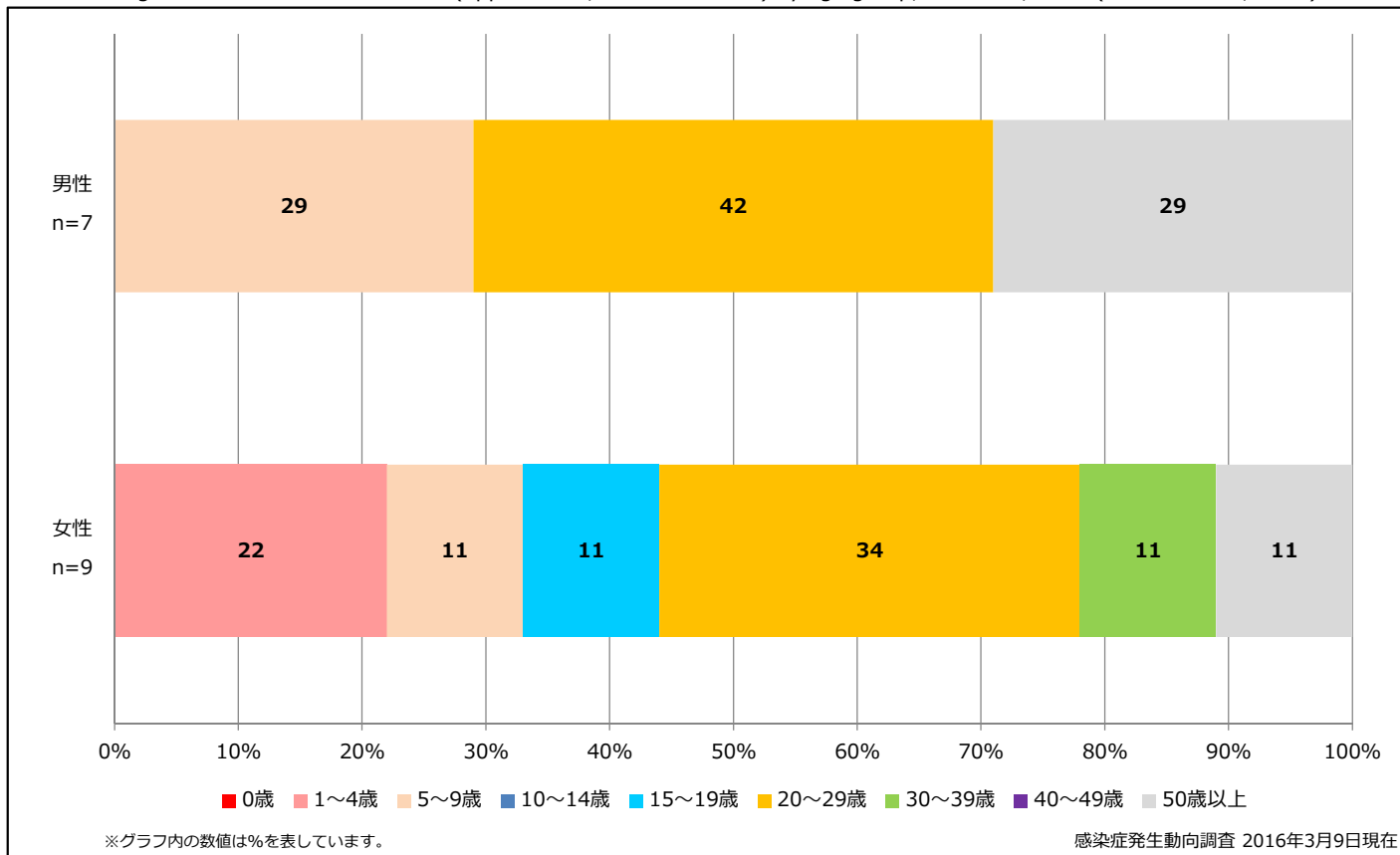
Cumulative rubella cases (female) by age and vaccinated status, week 1-9, 2016 (as of March 9, 2016)

None RCV1 RCV2 Unknown



### 6. 年齢群別風しん累積報告数割合 (男女別) 2016年 第1~9週 (n=16)

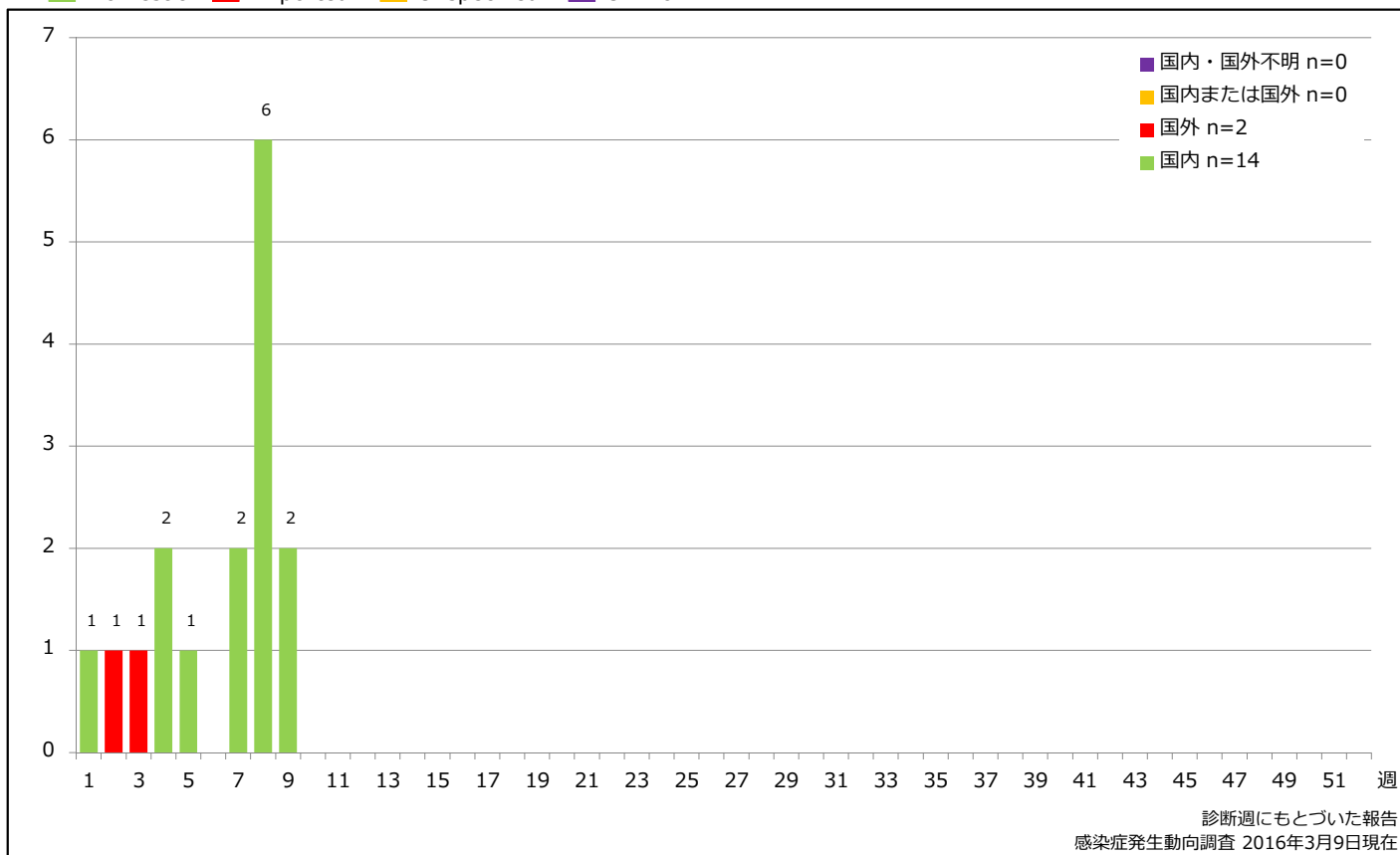
Percentage of cumulative rubella cases (upper: male, bottom: female) by age group, week 1-9, 2016 (as of March 9, 2016)



### 7. 週別推定感染地域(国内・外)別風しん報告数 2016年 第1~9週 (n=16)

Weekly rubella cases by acquired region, week 1-9, 2016 (based on diagnosed week as of March 9, 2016)

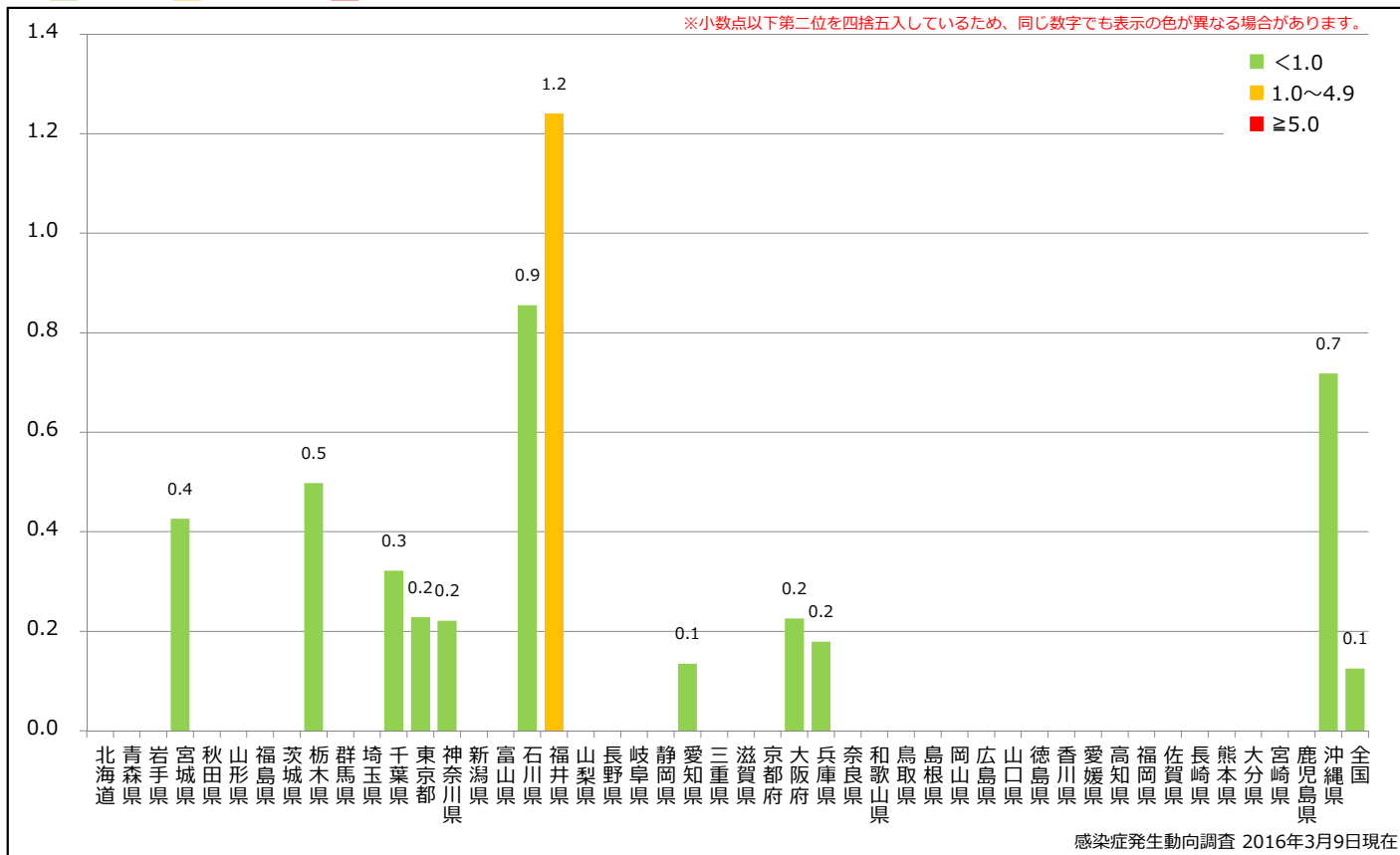
Domestic Imported Unspecified Unknown



### 8. 都道府県別人口百万人あたり風しん報告数 2016年 第1~9週 (n=16)

Reported rubella cases per 1 million population by prefecture, week 1-9, 2016 (as of March 9, 2016)

■ <1.0 ■ 1.0~4.9 ■ ≥5.0



9. 都道府県別風しん週別報告状況 2016年 第1~09週 感染症発生動向調査

2016年03月09日現在

Weekly rubella cases from week 01 to week 09, 2016 (based on diagnosed week as of March 09, 2016)

報告数  
No. of cases

