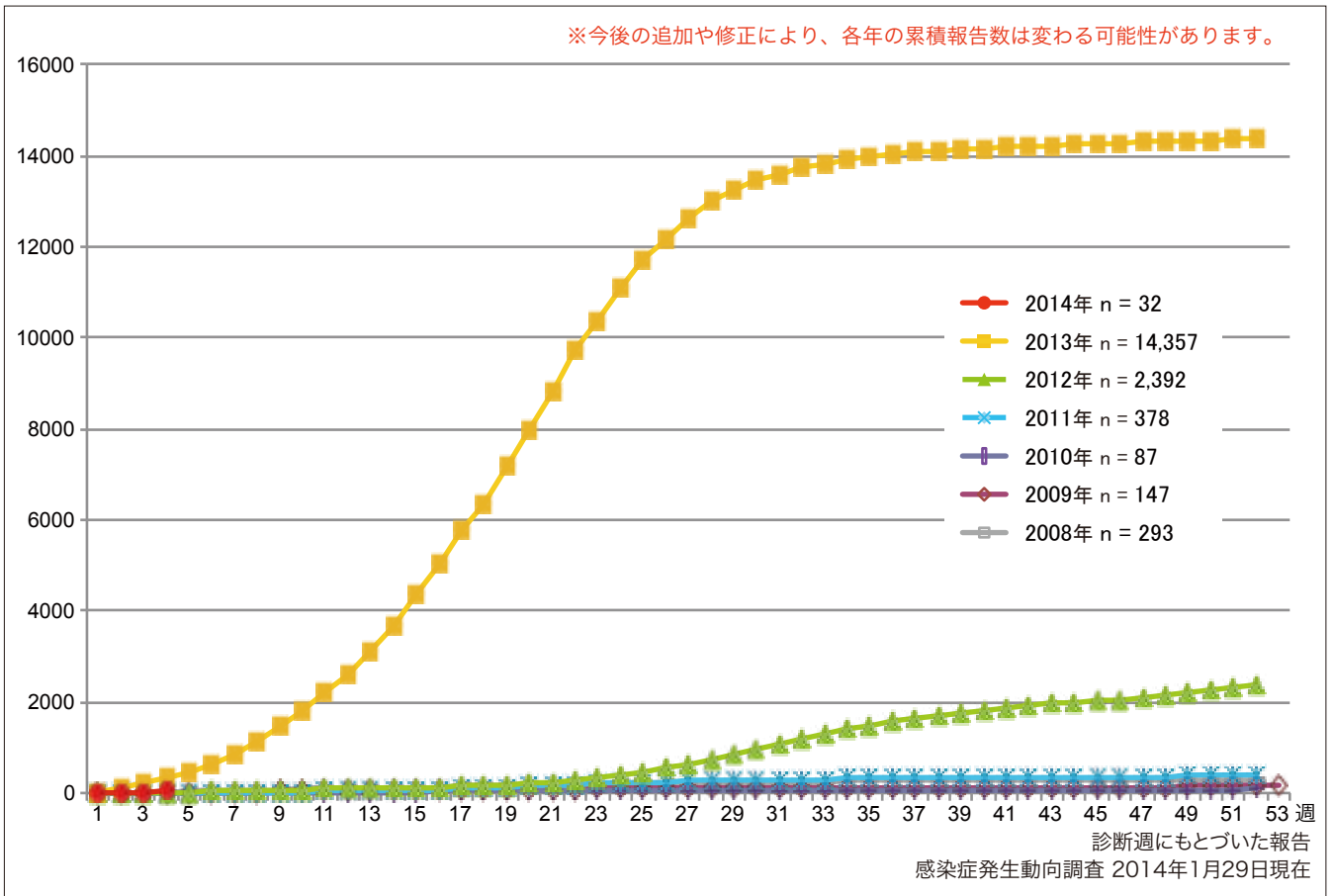
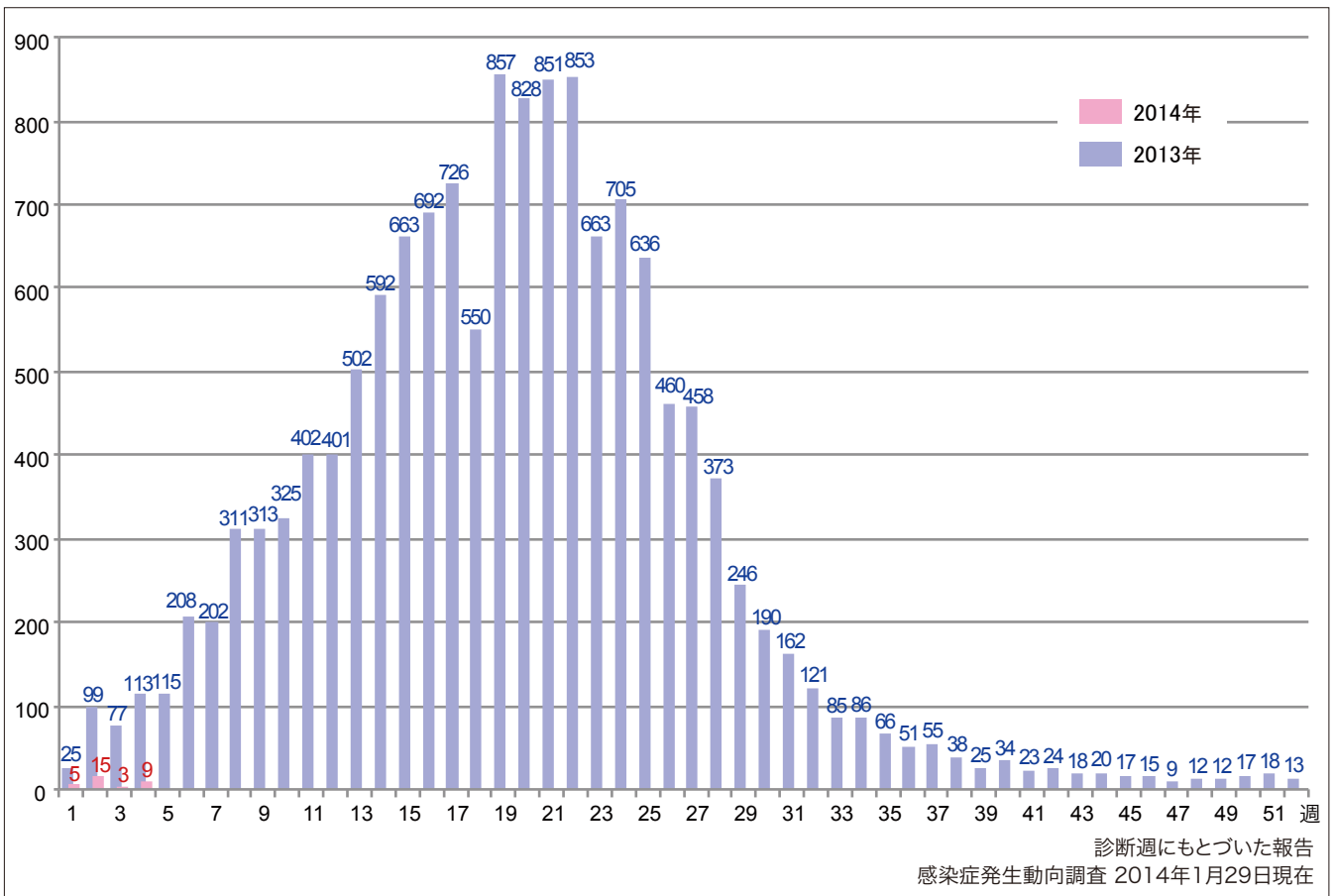


1. 風しん累積報告数の推移 2008～2014年（第1～4週）  
 Cumulative number of rubella cases by week, 2008–2014 (week1–4)  
 (based on diagnosed week as of January 29, 2014).



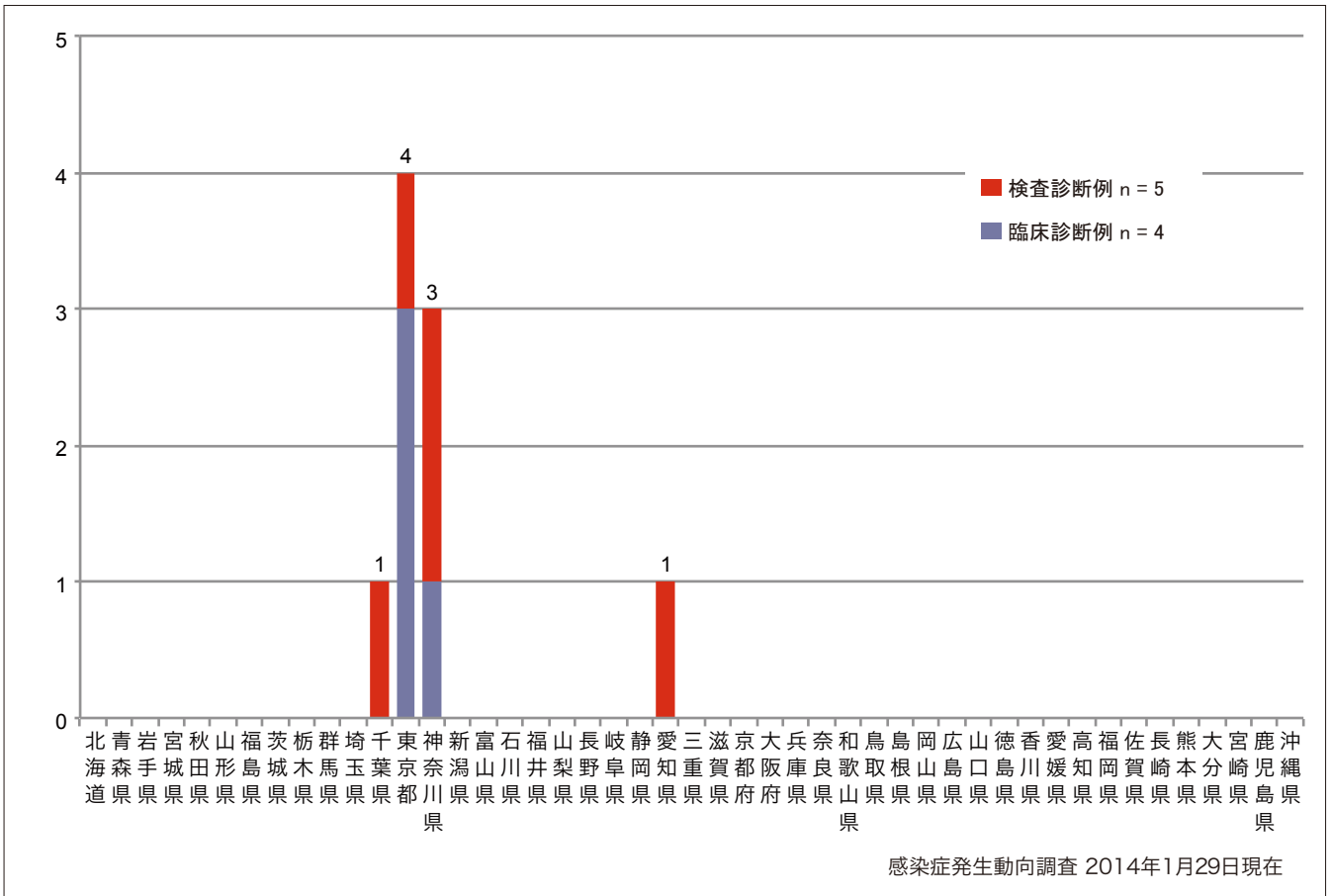
2. 週別風しん報告数 2014年 第1～4週（n=32）  
 Weekly rubella cases from week 1 to week 4, 2014 (based on diagnosed week as of  
 January 29, 2014).



3. 都道府県別病型別風しん報告数 2014年 第4週 (n=9)

Reported rubella cases by prefecture and methods of diagnosis in week 4, 2014  
(as of January 29, 2014).

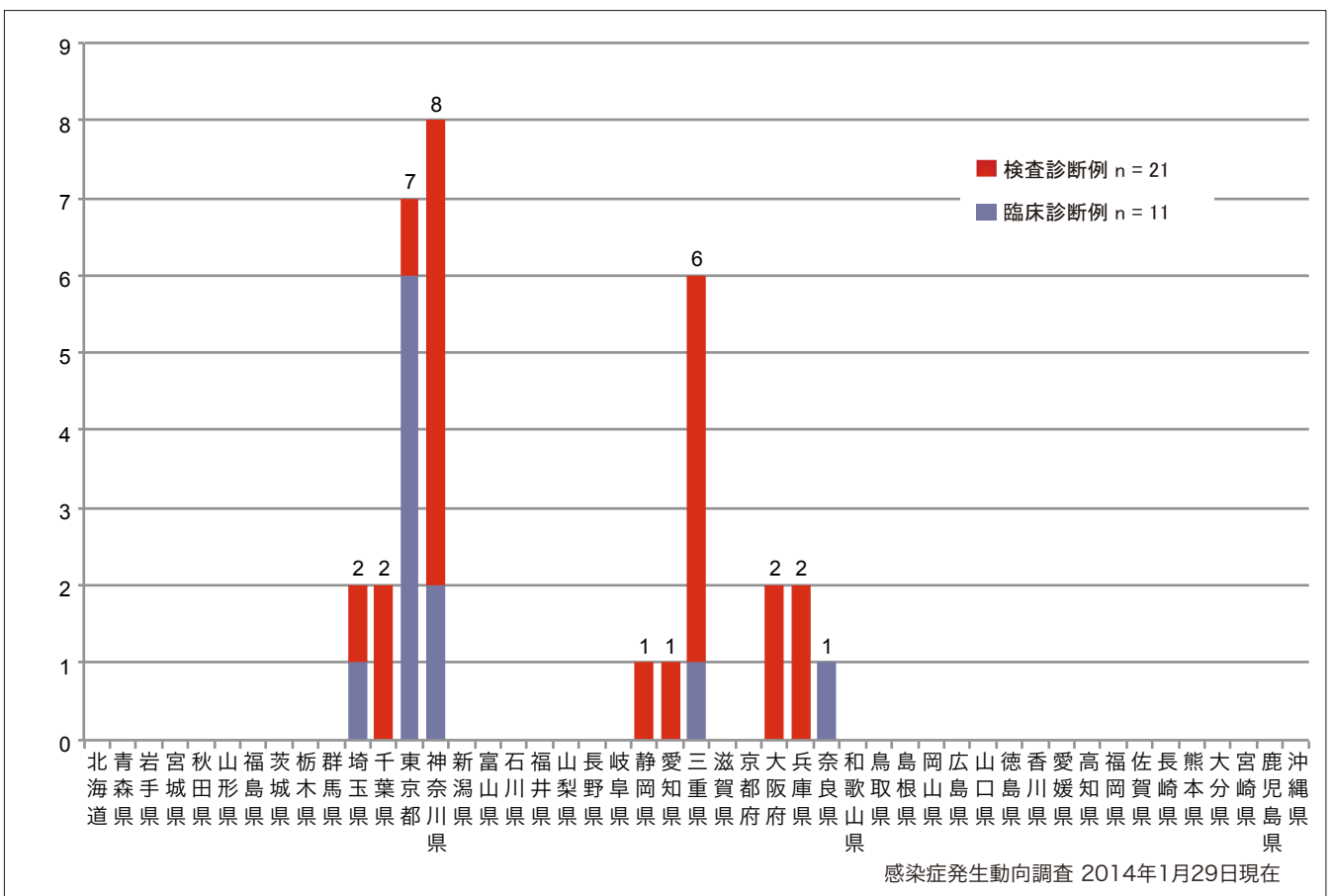
■ Clinically diagnosed ■ Laboratory diagnosed



4. 都道府県別病型別風しん累積報告数 2014年 第1~4週 (n=32)

Cumulative rubella cases by prefecture and methods of diagnosis from week 1 to week 4, 2014  
(as of January 29, 2014).

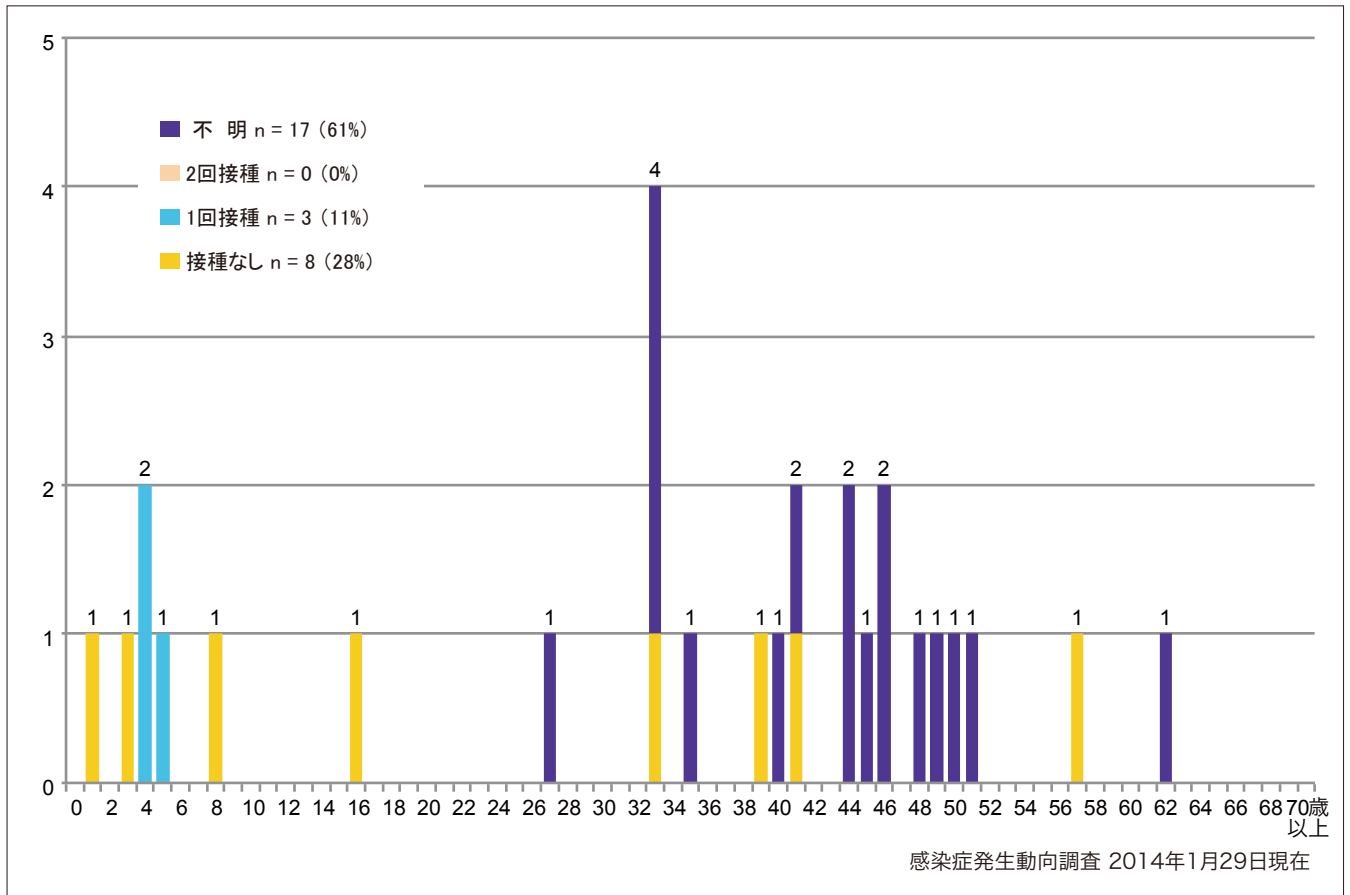
■ Clinically diagnosed ■ Laboratory diagnosed



5-1. 年齢群別接種歴別風しん累積報告数 (男性) 2014年 第1~4週 (n=28)

Cumulative rubella cases (male) by age and vaccinated status from week 1 to week 4, 2014 (as of January 29, 2014).

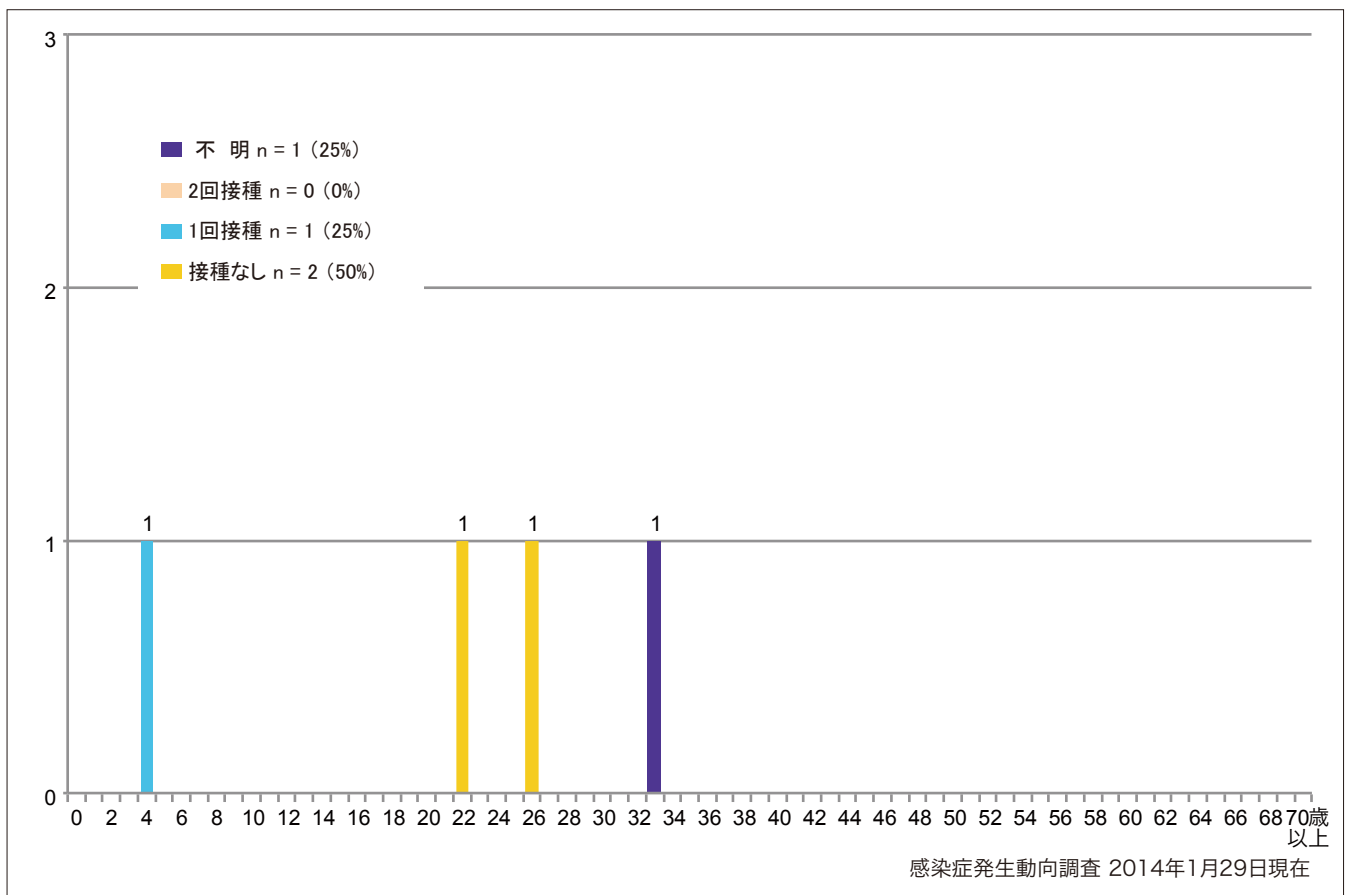
■ None ■ RCV1 ■ RCV2 ■ Unknown



5-2. 年齢群別接種歴別風しん累積報告数 (女性) 2014年 第1~4週 (n=4)

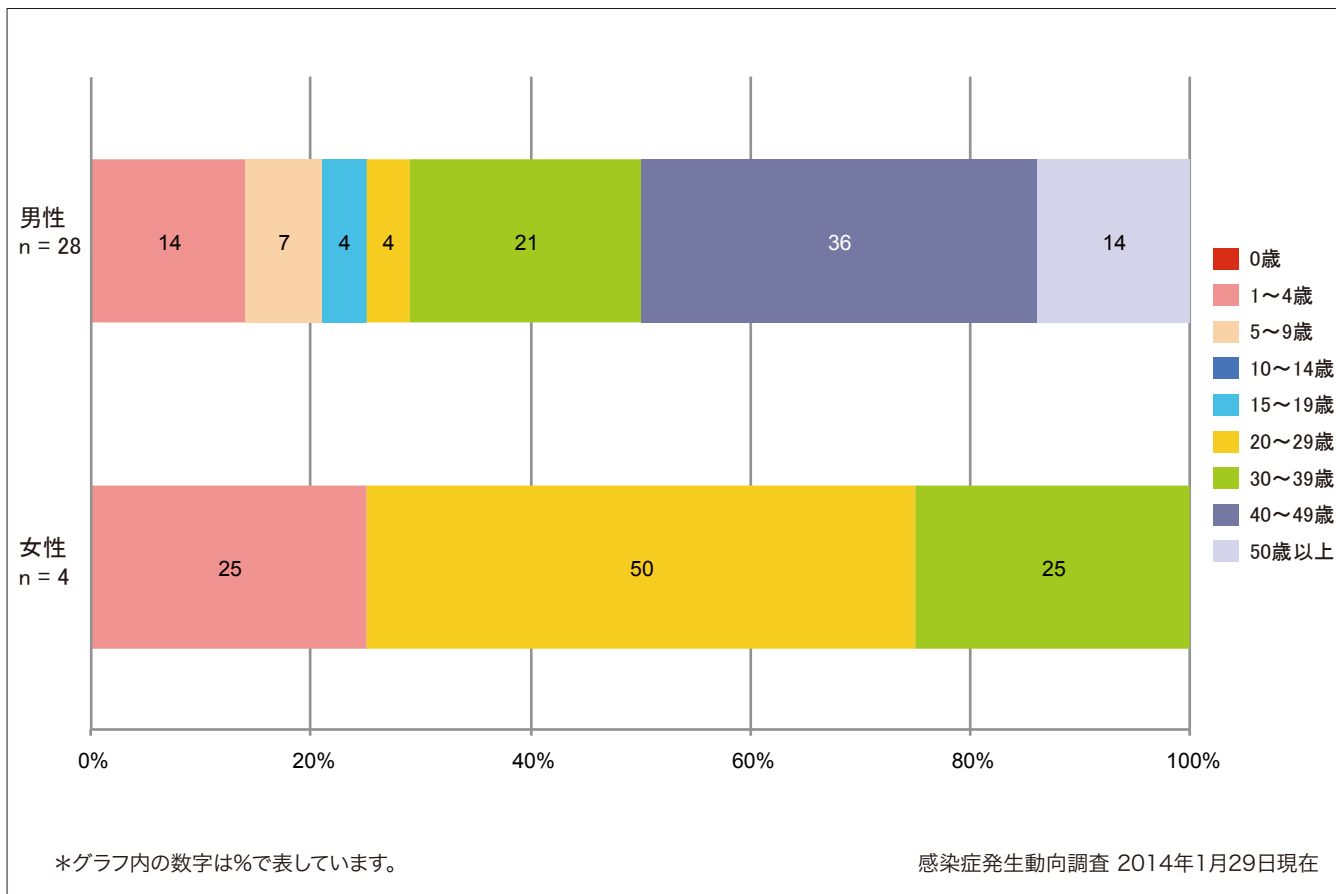
Cumulative rubella cases (female) by age and vaccinated status from week 1 to week 4 2014 (as of January 29, 2014).

■ None ■ RCV1 ■ RCV2 ■ Unknown



6. 年齢群別風しん累積報告数割合（男女別） 2014年 第1～4週（n=32）

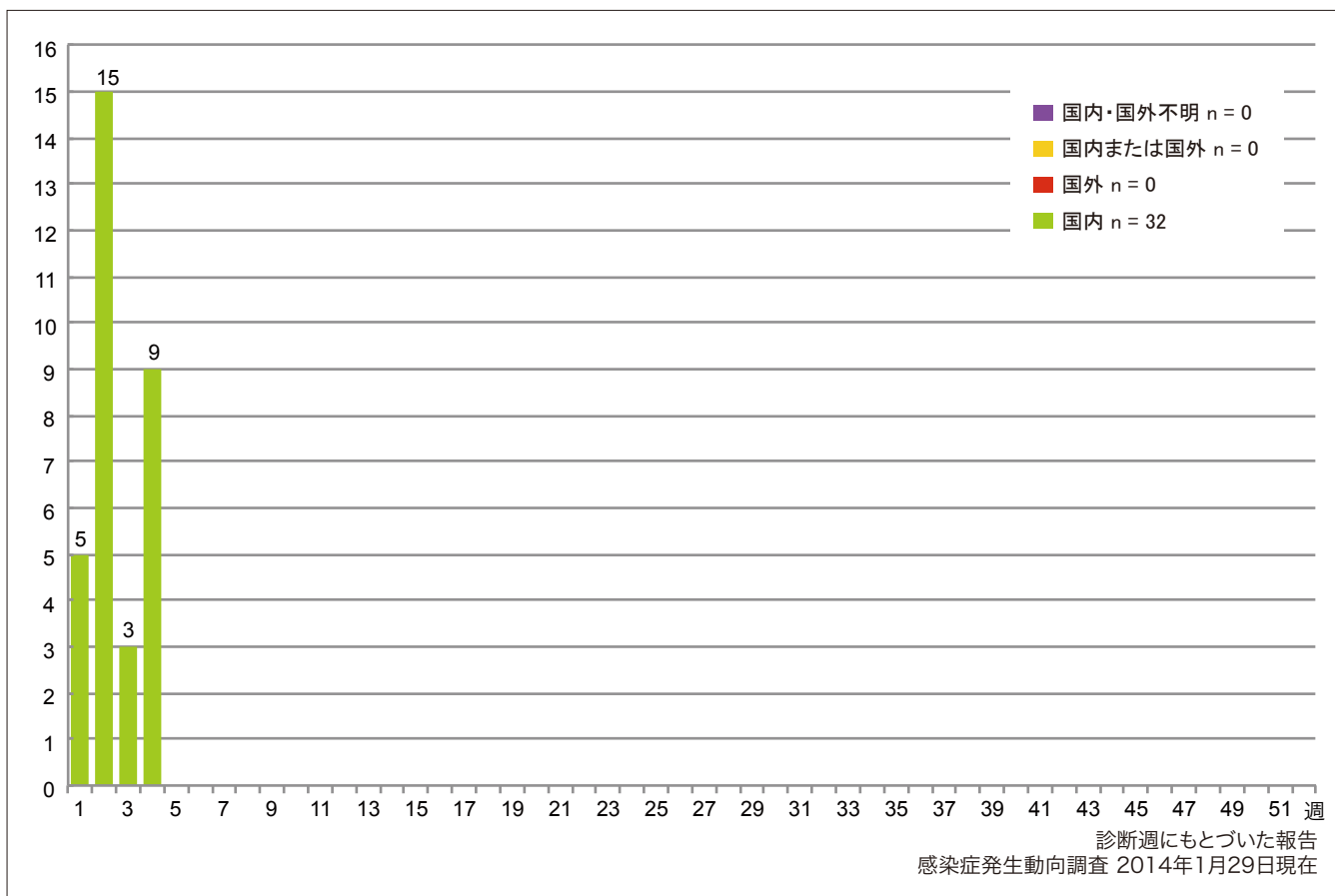
Percentage of cumulative rubella cases (upper: male, bottom: female) by age group from week 1 to week 4, 2014 (as of January 29, 2014).



7. 週別推定感染地域（国内・外）別風しん報告数 2014年 第1～4週（n=32）

Weekly rubella cases by acquired region from week 1 to week 4, 2014 (based on diagnosed week as of January 29, 2014).

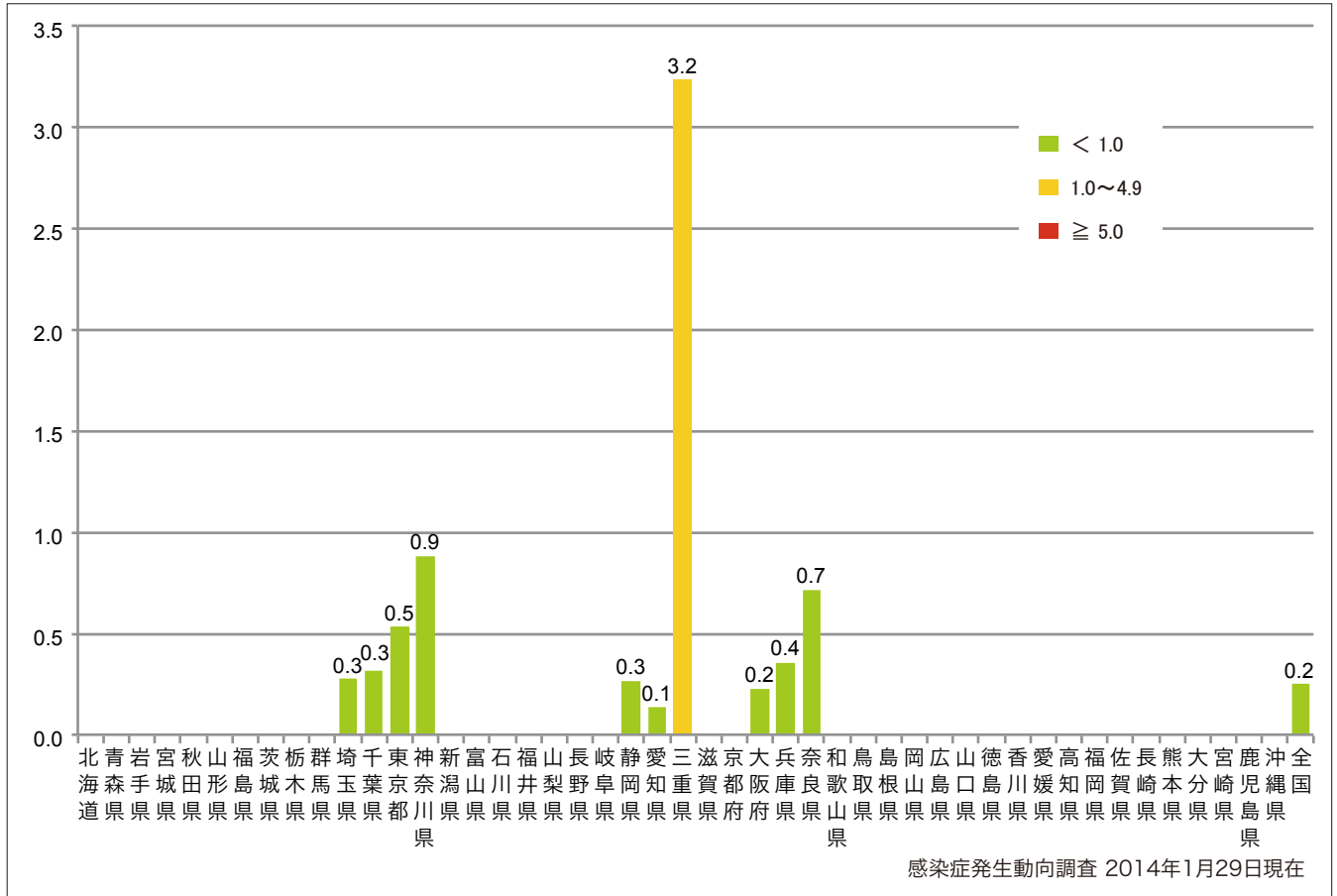
■ Domestic cases ■ Imported cases ■ Unspecified ■ Unknown



8. 都道府県別人口百万人あたり風しん報告数 2014年 第1~4週 (n=32)

Number of reported cases per 1 million population by prefectures from week 1 to week 4, 2014 (as of January 29, 2014).

■ <1.0 ■ 1.0~4.9 ■ ≥5.0



9. 都道府県別風しん週別報告状況 2014年 第1~04週 感染症発生動向調査

2014年01月29日現在

Weekly rubella cases from week 1 to week 04, 2014 (based on diagnosed week as of January 29, 2014)

報告数  
No. of cases

