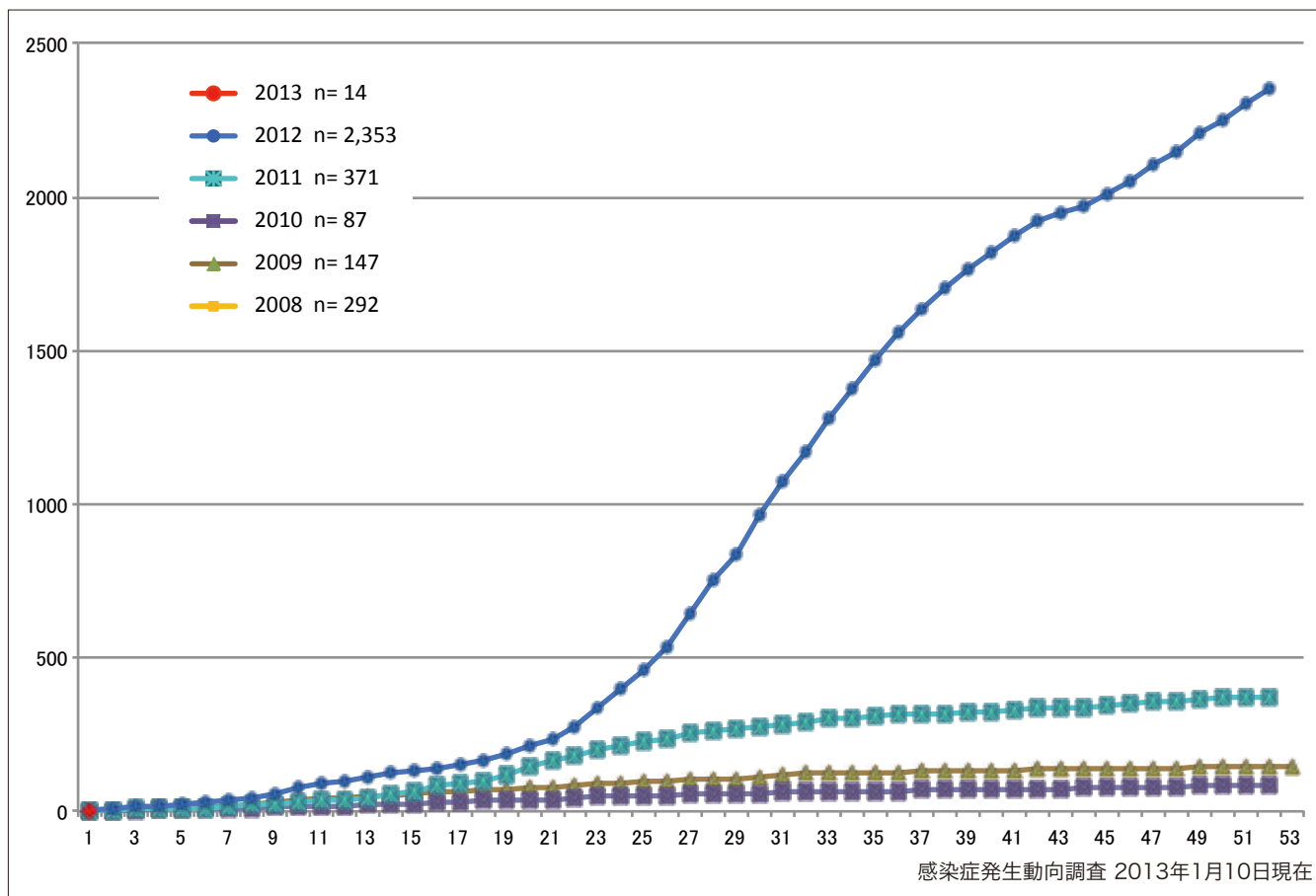


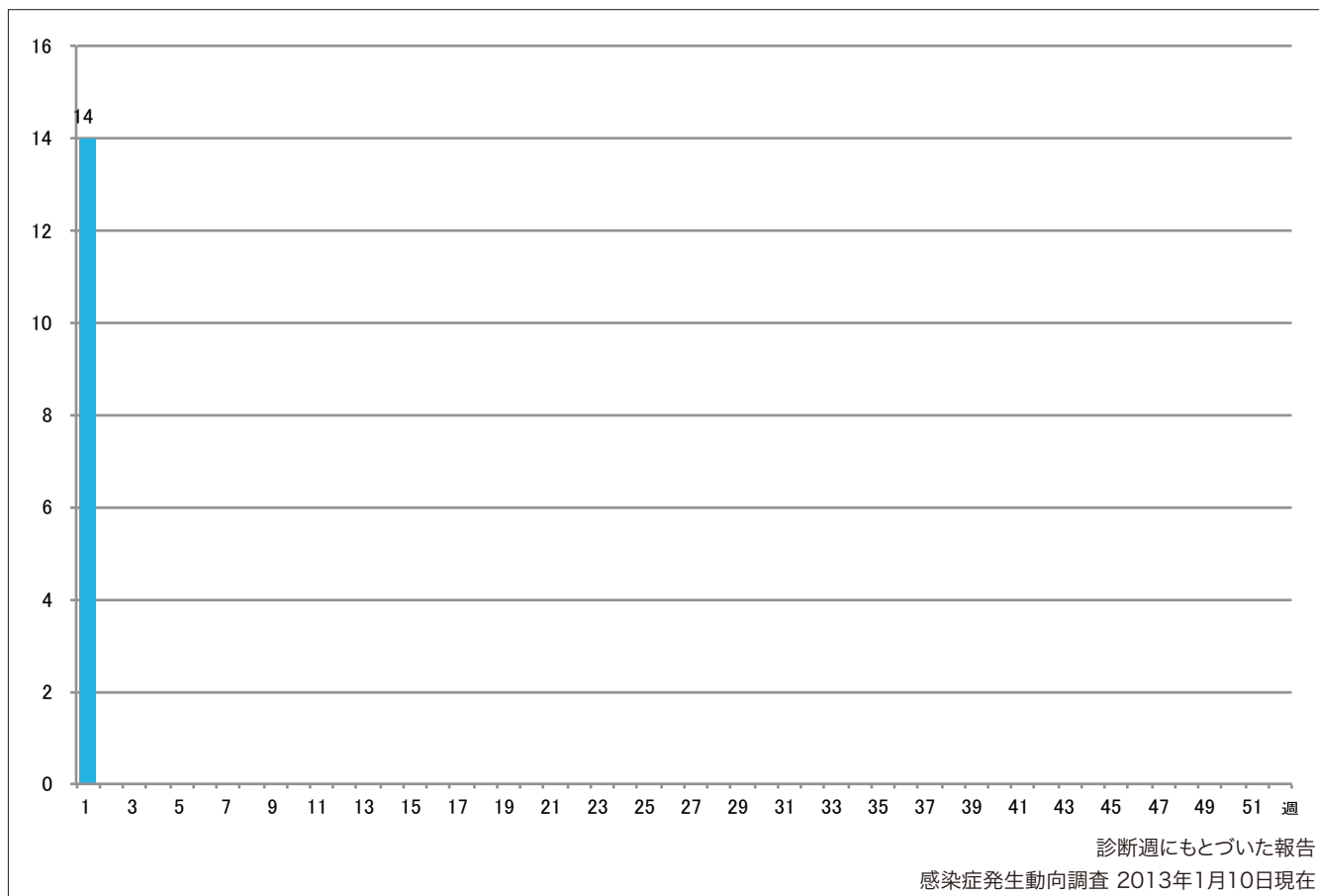
1. 風しん累積報告数の推移2008～2013年（第1週）

Cumulative number of rubella cases by week, 2008-2013 (week1)
 (based on diagnosed week as of January 10, 2013).



2. 週別風しん報告数 2013年 第1週 (n=14)

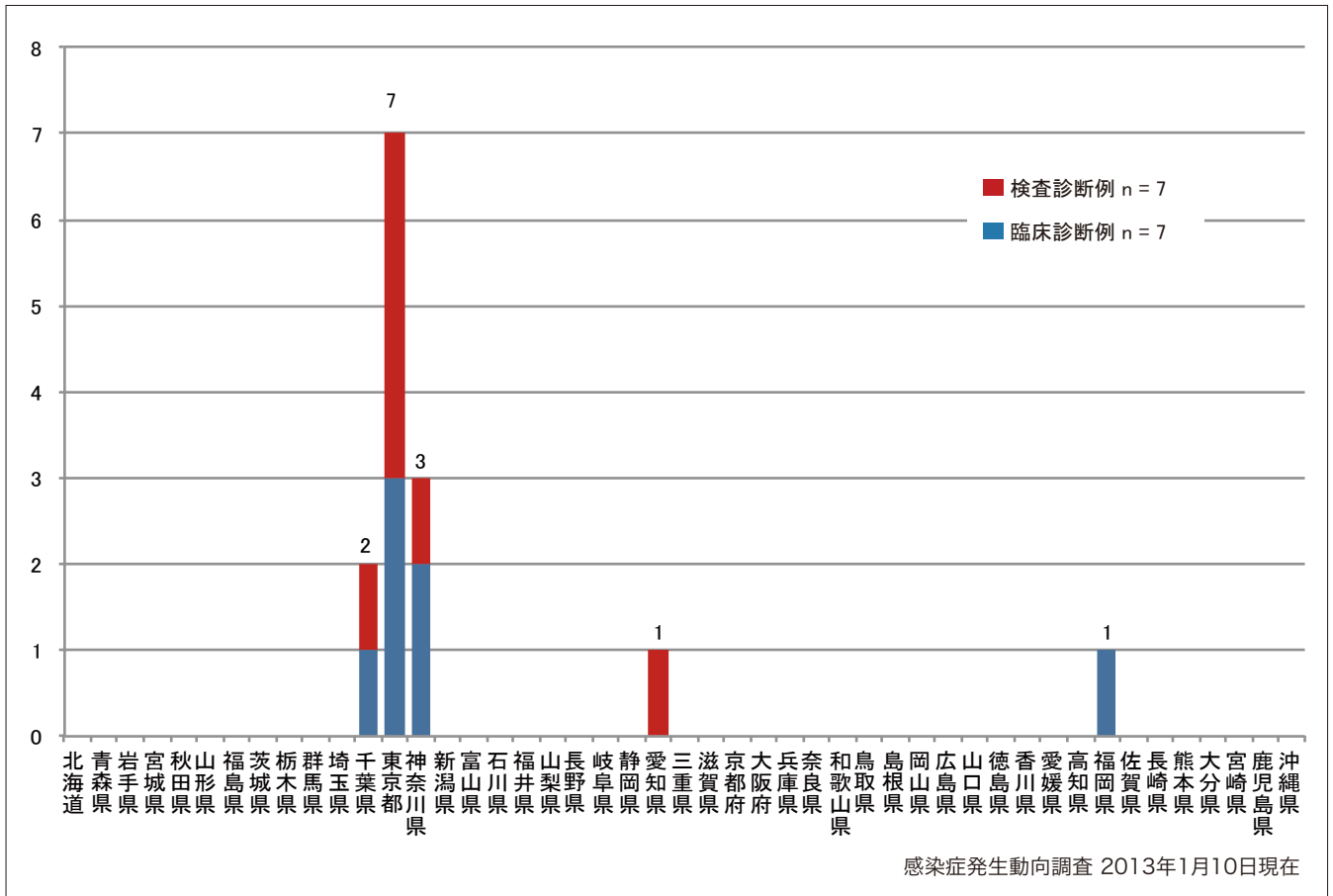
Weekly rubella cases from week 1, 2013 (based on diagnosed week as of January 10, 2013).



3. 都道府県別病型別風しん報告数 2013年 第1週 (n=14)

Reported rubella cases by prefecture and methods of diagnosis in week 1, 2012 (as of January 10, 2013).

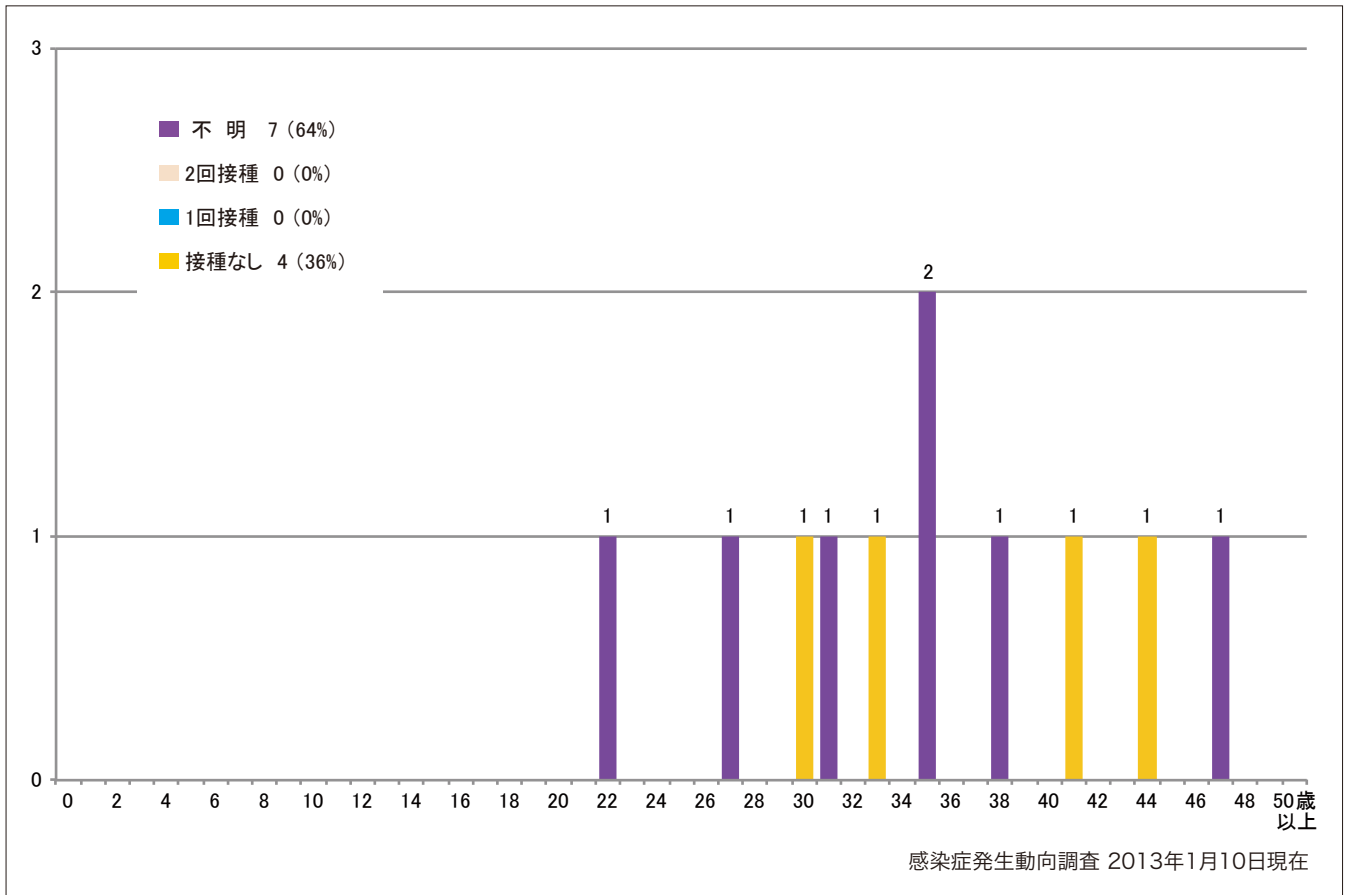
■ Clinically diagnosed ■ Laboratory diagnosed



4-1. 年齢群別接種歴別風しん累積報告数（男性） 2013年 第1週（n=11）

Cumulative rubella cases (male) by age and vaccinated status from week 1, 2013 (as of January 10, 2013).

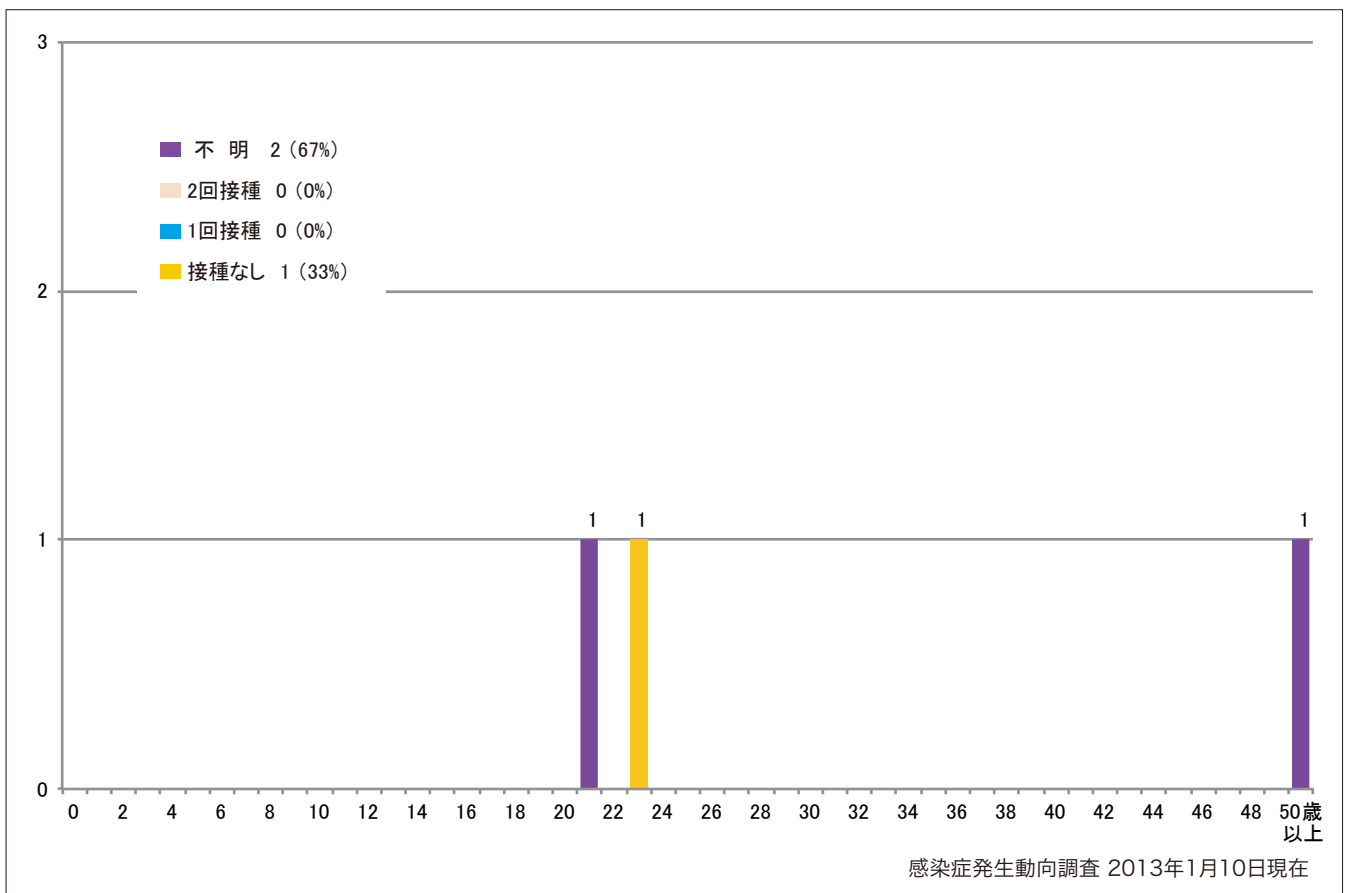
■ None ■ RCV1 ■ RCV2 ■ Unknown



4-2. 年齢群別接種歴別風しん累積報告数（女性） 2013年 第1週（n=3）

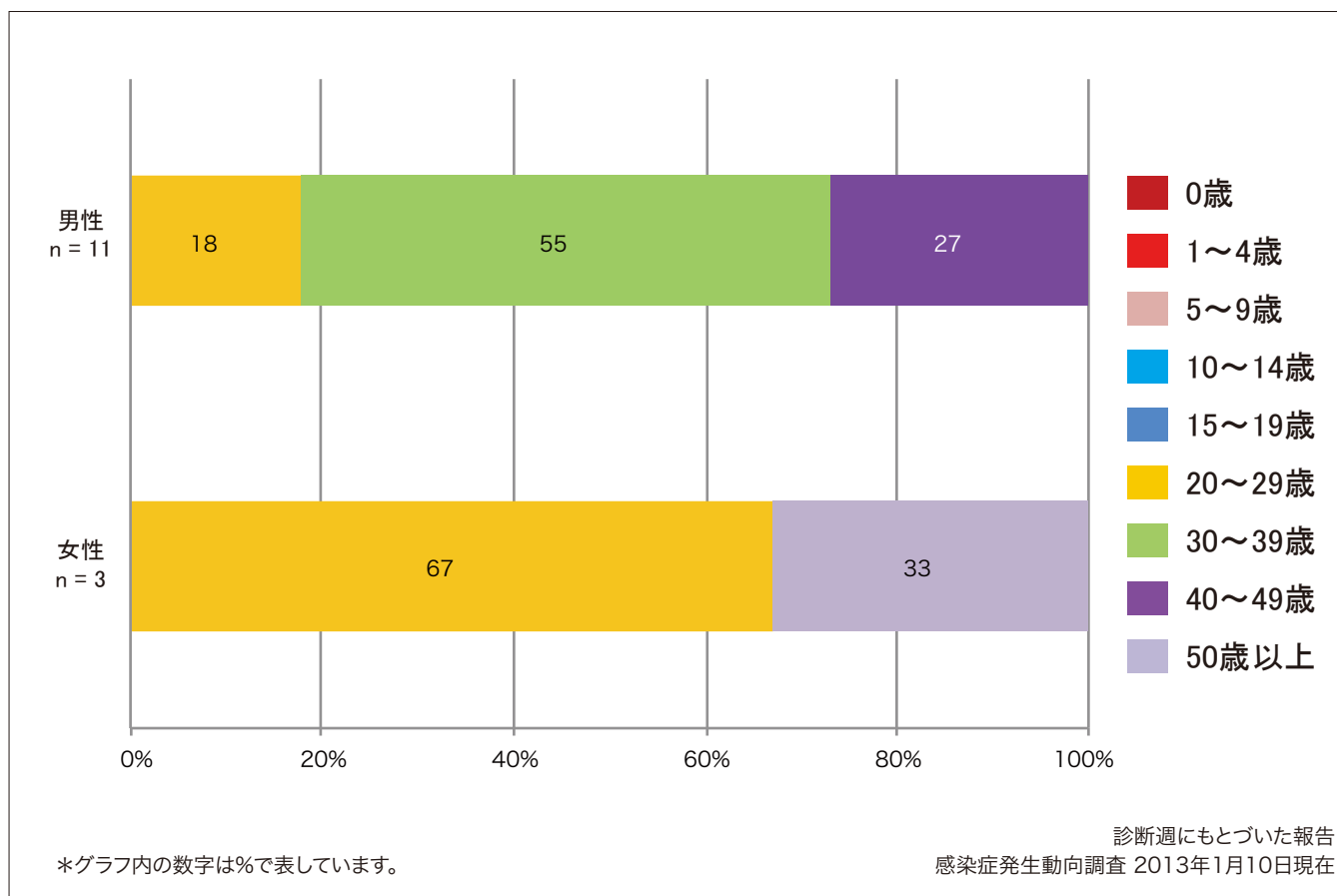
Cumulative rubella cases (female) by age and vaccinated status from week 1, 2013 (as of January 10, 2013).

■ None ■ RCV1 ■ RCV2 ■ Unknown



5. 年齢群別風しん累積報告数割合（男女別） 2013年 第1週（n=14）

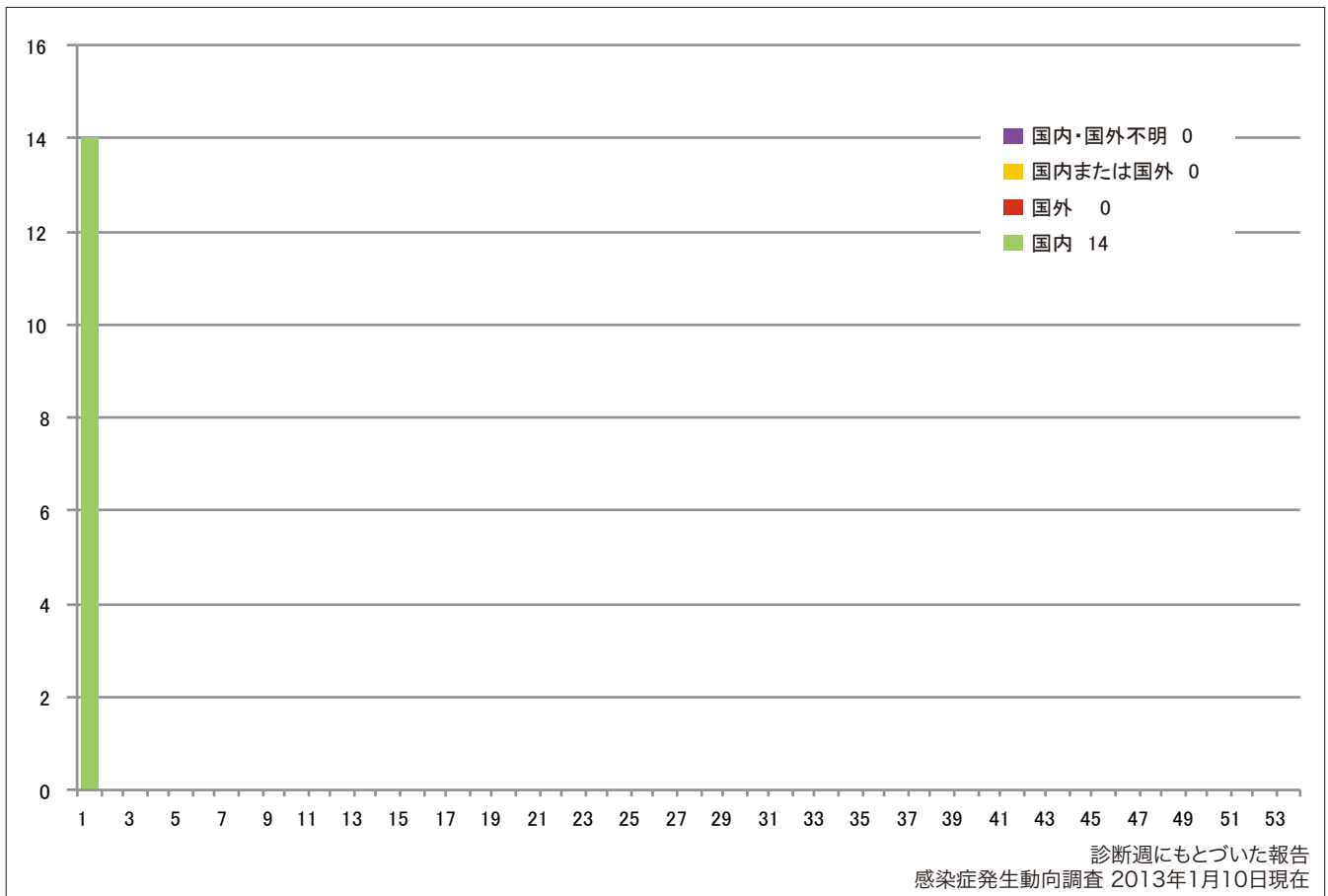
Percentage of cumulative rubella cases (upper: male, bottom: female) by age group from week 1, 2013 (as of January 10, 2013).



6. 週別推定感染地域（国内・外）別風しん報告数 2013年 第1週（n=14）

Weekly rubella cases by acquired region from week 1, 2013
(based on diagnosed week as of January 10, 2013).

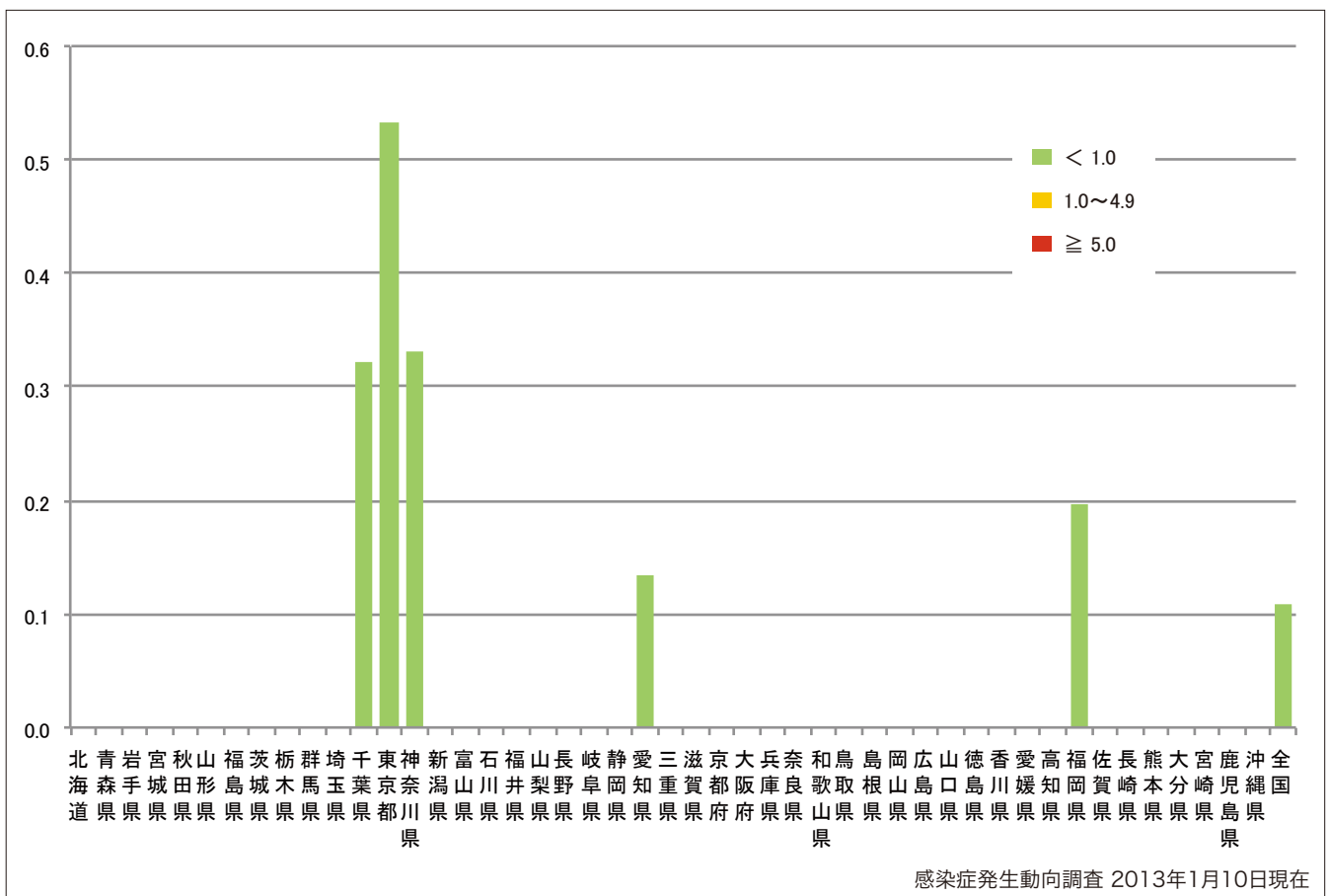
■ Domestic cases ■ Imported cases ■ Unspecified ■ Unknown



7. 都道府県別人口百万人あたり風しん報告数 2013年 第1週（n=14）

Number of reported cases per 1 million population by prefectures from week 1, 2013
(as of January 10, 2013).

■ <1.0 ■ 1.0~4.9 ■ ≥5.0



Weekly rubella cases from week 1 to week 01, 2013 (based on diagnosed week as of January 10, 2013)

