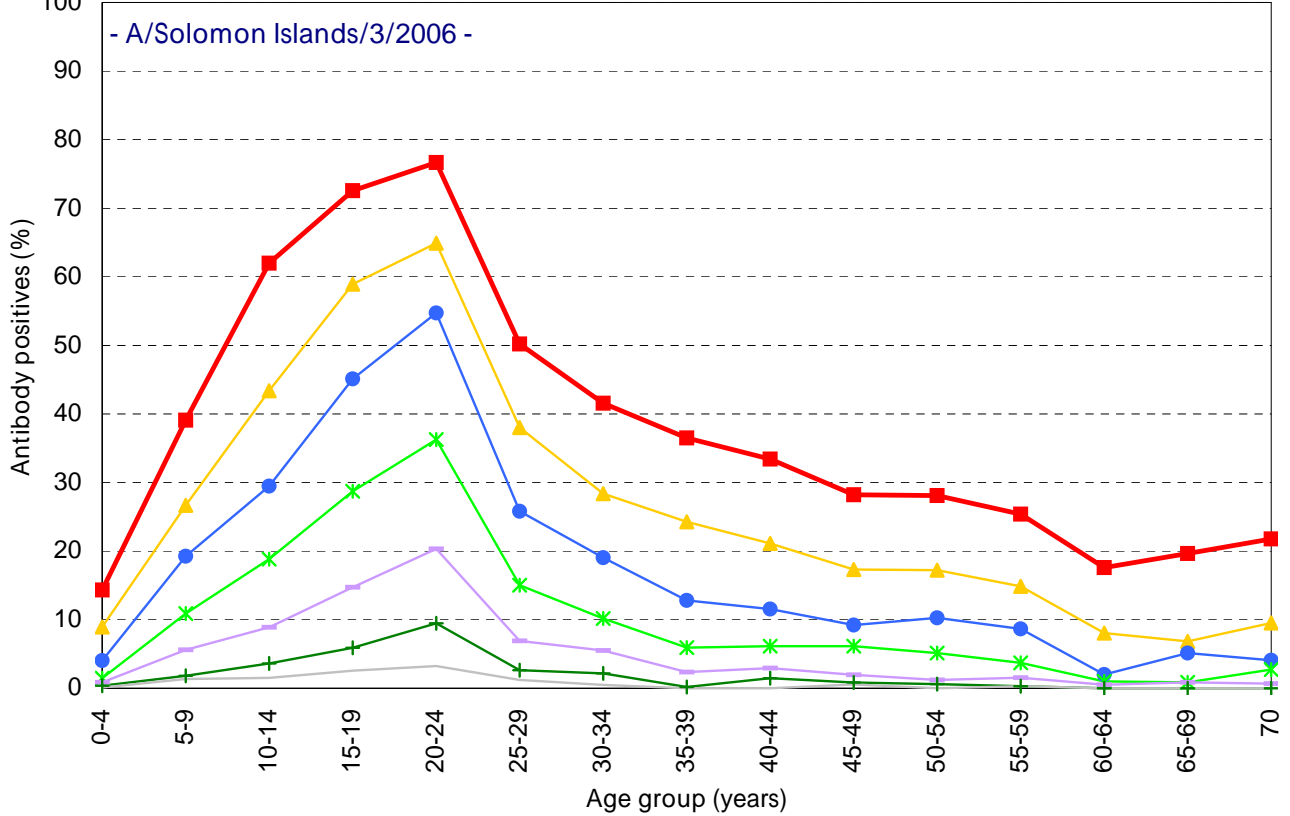


Age distribution of influenza HI antibody positives before 2007/08 season in Japan

- National Epidemiological Surveillance of Vaccine-Preventable Diseases, 2007 -

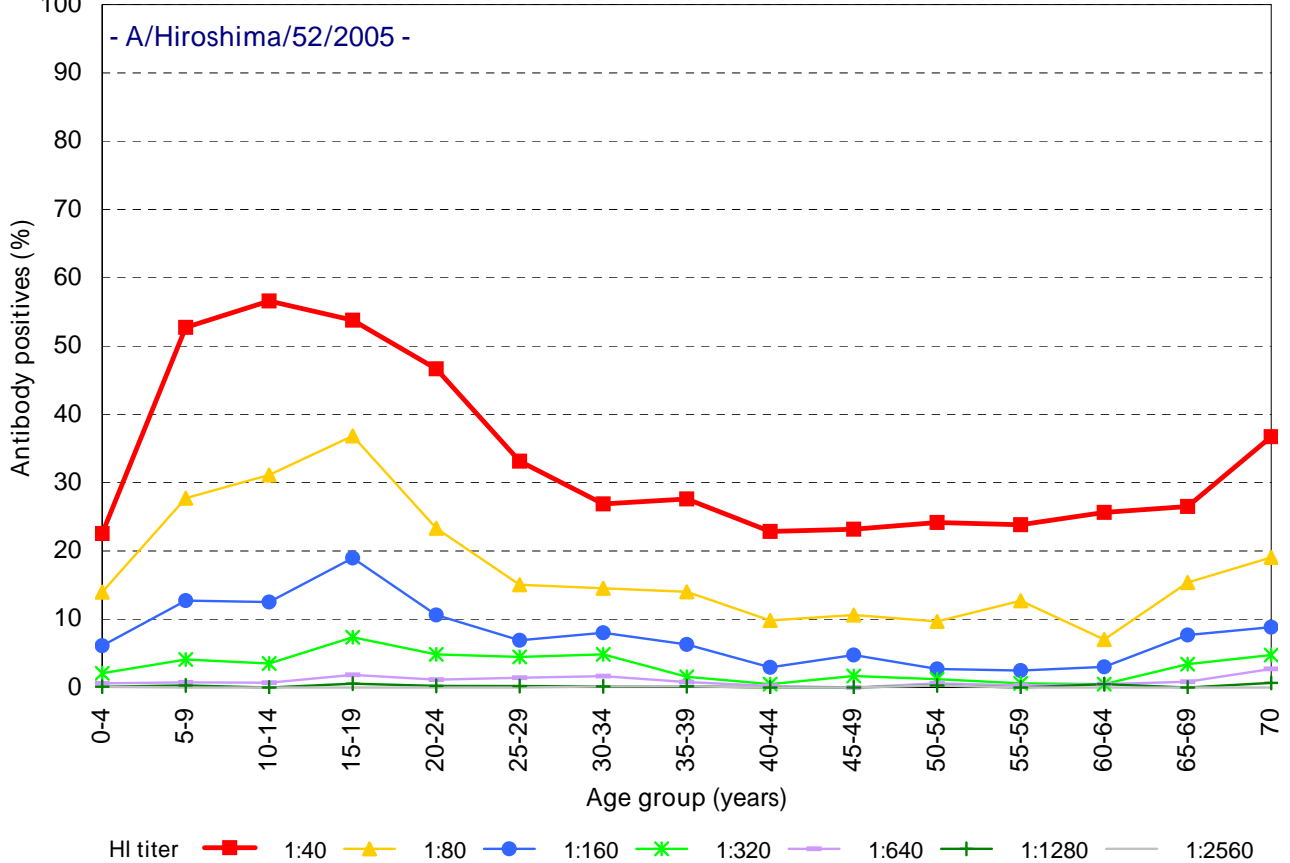
A(H1N1)

[Examination by hemagglutination inhibition test (HI) / n = 6787]



A(H3N2)

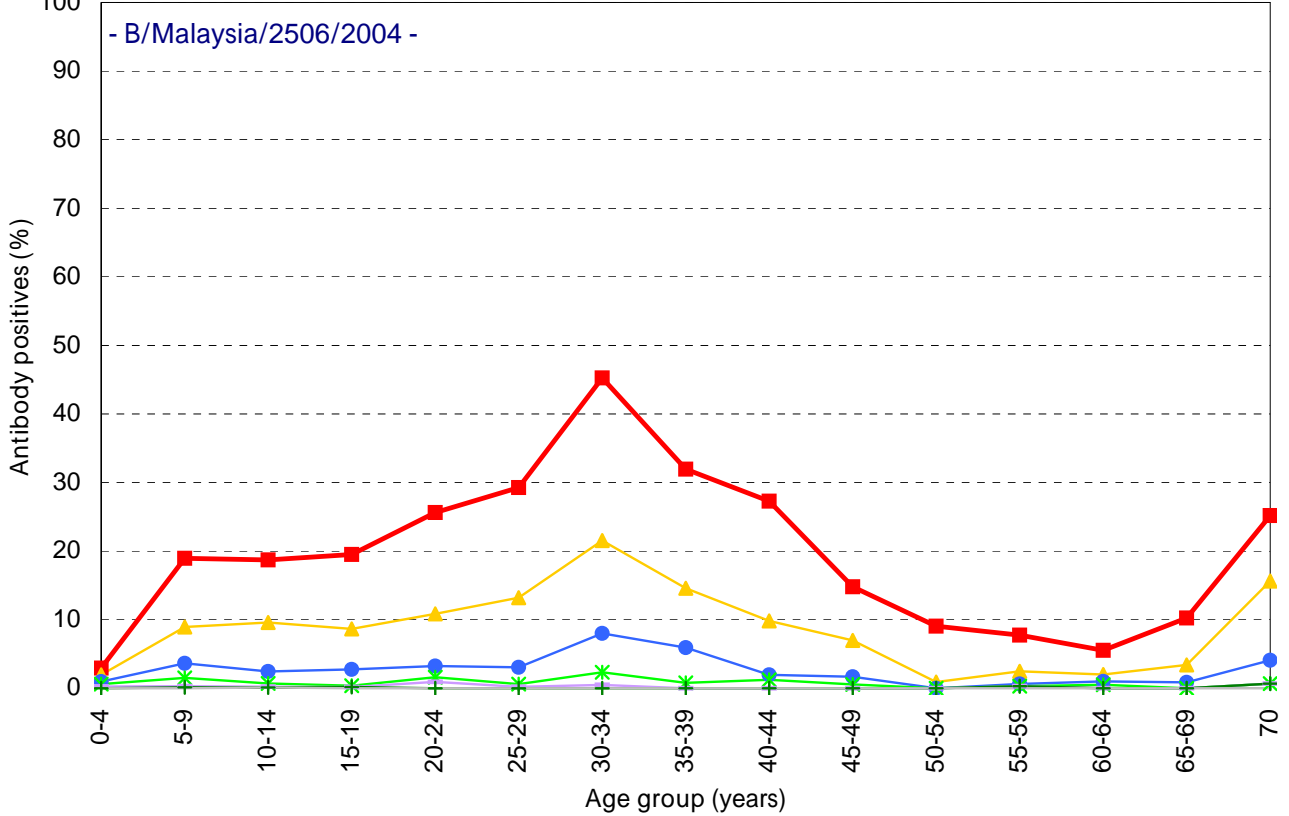
[Examination by hemagglutination inhibition test (HI) / n = 6787]



HI titer 1:40 1:80 1:160 1:320 1:640 1:1280 1:2560

B (Victoria lineage)

[Examination by hemagglutination inhibition test (HI) / n = 6787]



B (Yamagata lineage)

[Examination by hemagglutination inhibition test (HI) / n = 6787]

