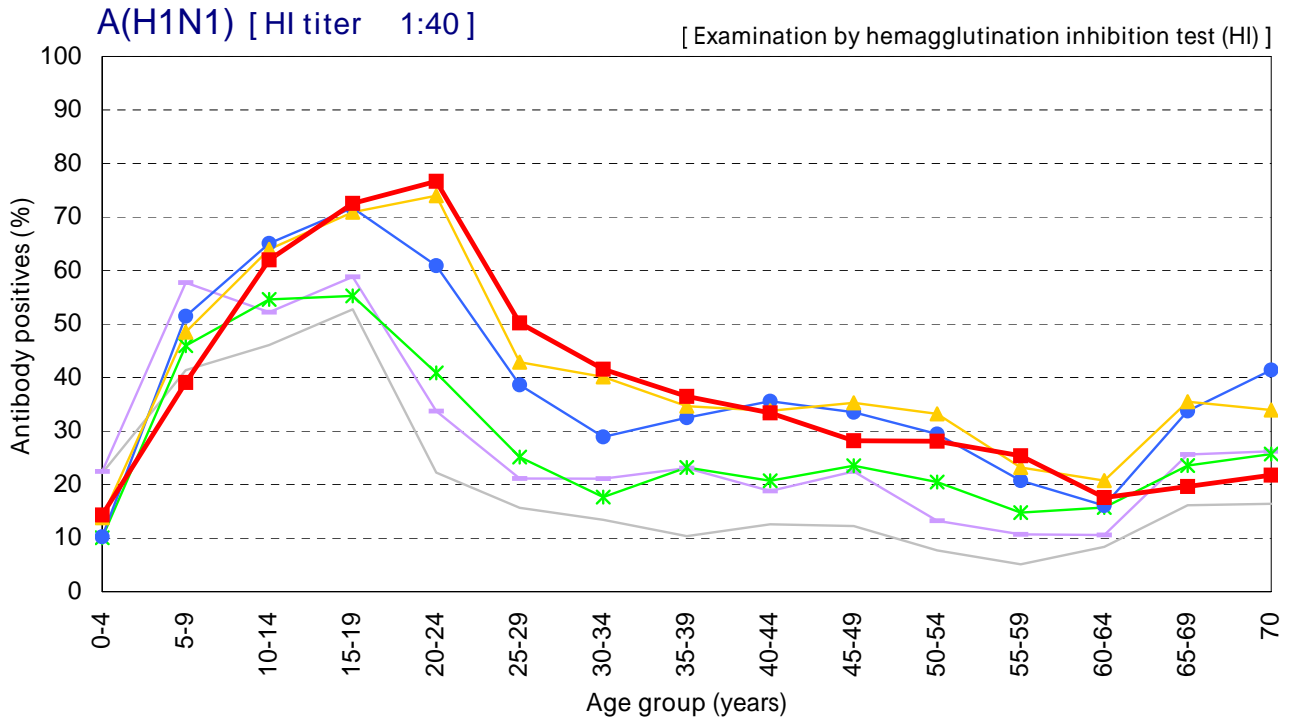


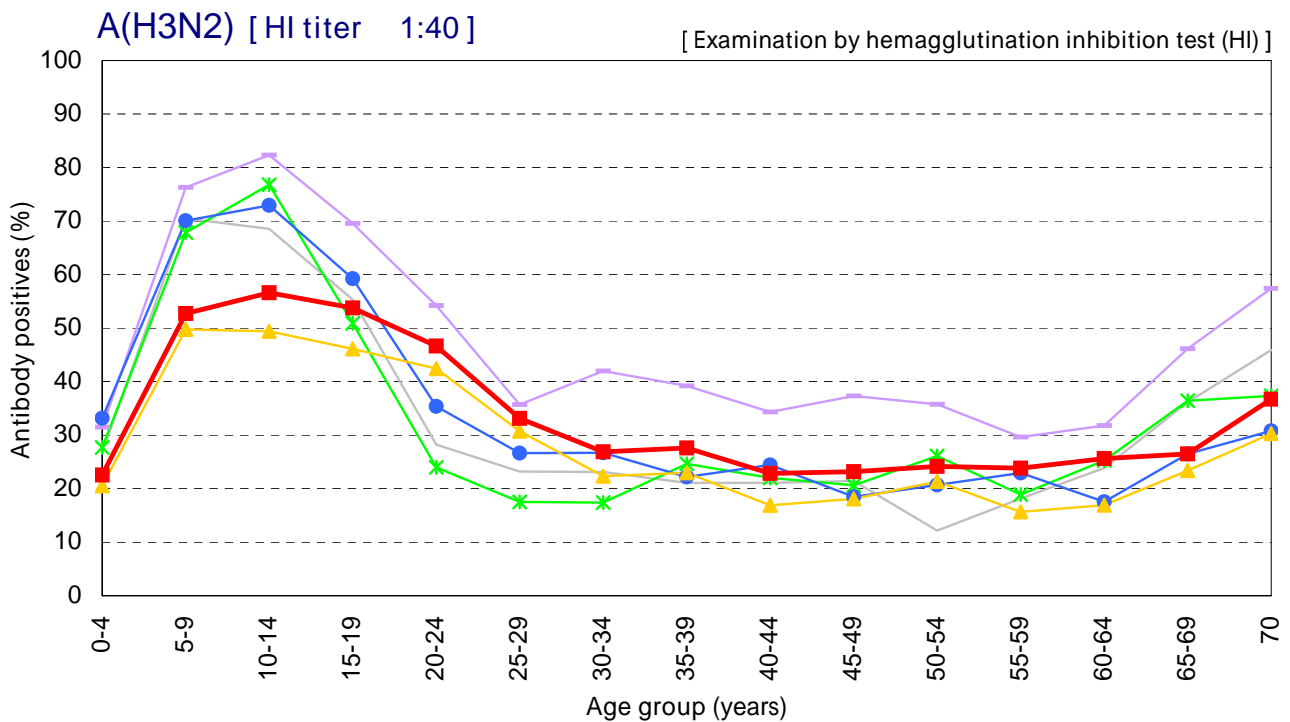
# Age distribution of influenza HI antibody positives in Japan, 2002 ~ 2007

- National Epidemiological Surveillance of Vaccine-Preventable Diseases, 2007 -



Year : Virus strain for examination

- 2002 : A/New Caledonia/20/99 [n=5028]
- 2003 : A/New Caledonia/20/99 [n=5276]
- 2004 : A/New Caledonia/20/99 [n=6066]
- 2005 : A/New Caledonia/20/99 [n=7460]
- 2006 : A/New Caledonia/20/99 [n=6449]
- 2007 : A/Solomon Islands/3/2006 [n=6787]

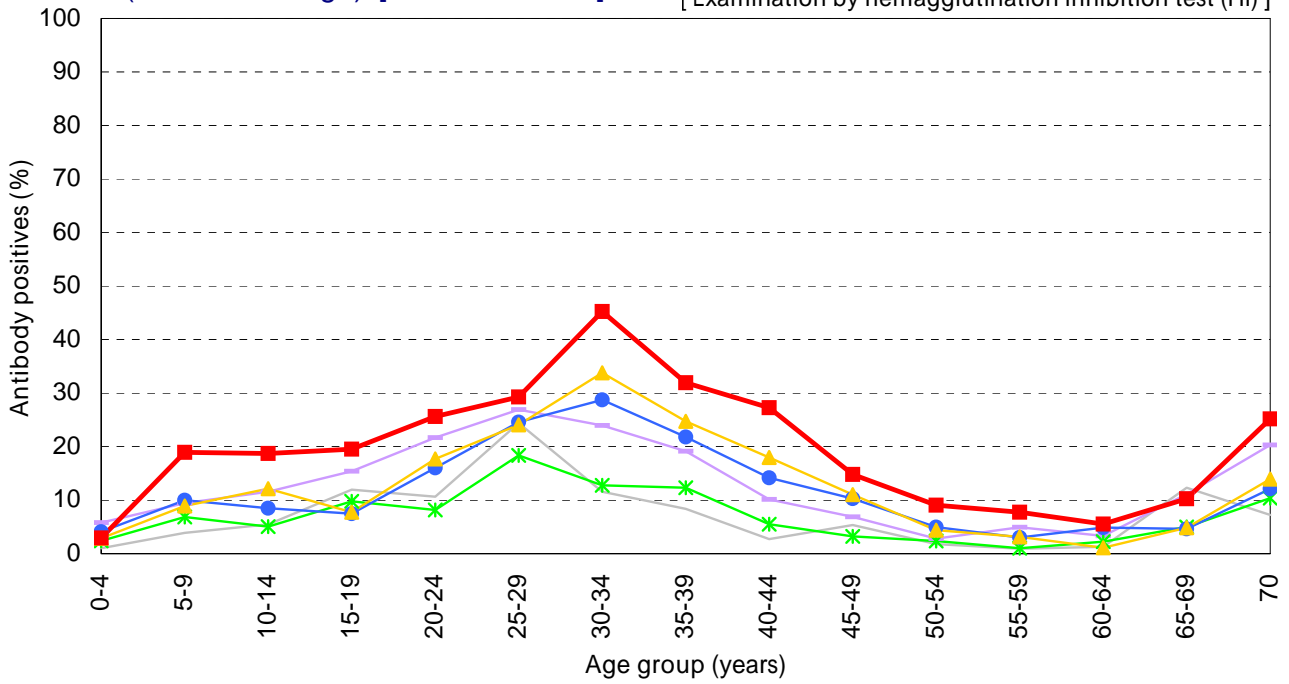


Year : Virus strain for examination

- 2002 : A/Panama/2007/99 [n=5028]
- 2003 : A/Panama/2007/99 [n=5276]
- 2004 : A/Wyoming/3/2003 [n=6066]
- 2005 : A/New York/55/2004 [n=7460]
- 2006 : A/Hiroshima/52/2005 [n=6449]
- 2007 : A/Hiroshima/52/2005 [n=6787]

**B (Victoria lineage) [ HI titer 1:40 ]**

[ Examination by hemagglutination inhibition test (HI) ]

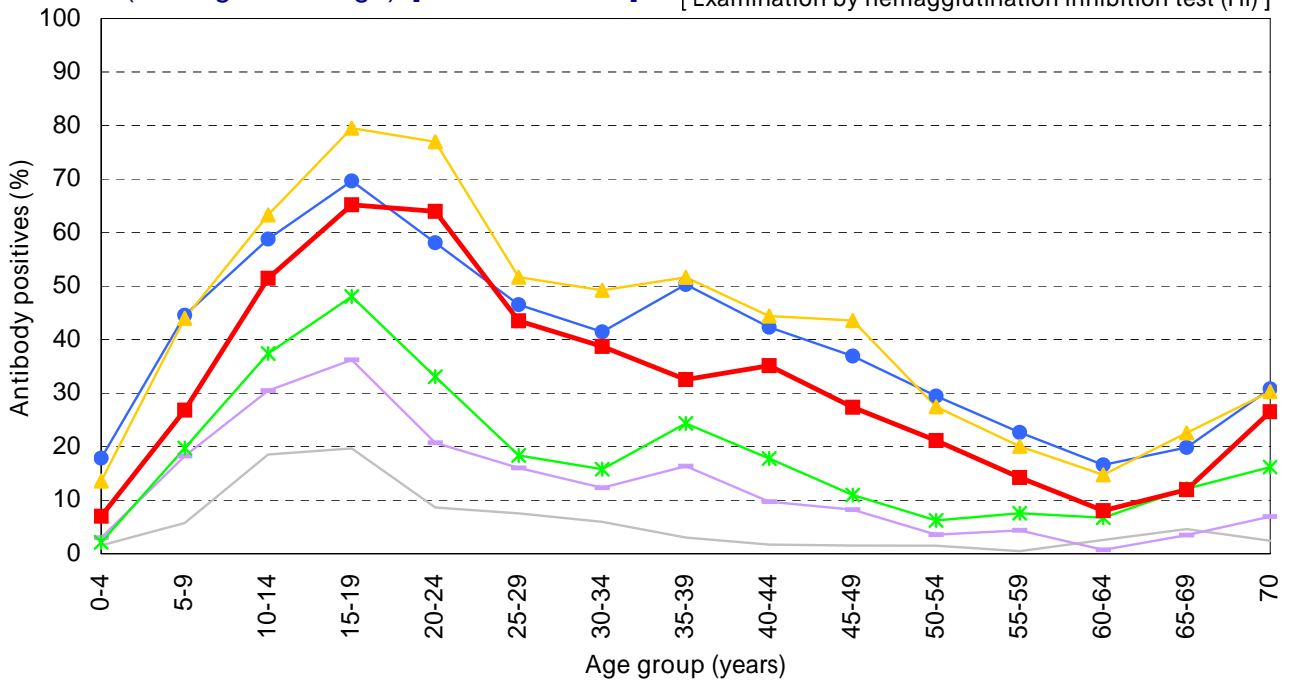


Year : Virus strain for examination

- 2002 : B/Shandong/7/97 [n=5028]
- 2003 : B/Shandong/7/97 [n=5276]
- 2004 : B/Brisbane/32/2002 [n=6066]
- 2005 : B/Hawaii/13/2004 [n=7460]
- 2006 : B/Malaysia/2506/2004 [n=6449]
- 2007 : B/Malaysia/2506/2004 [n=6787]

**B (Yamagata lineage) [ HI titer 1:40 ]**

[ Examination by hemagglutination inhibition test (HI) ]



Year : Virus strain for examination

- 2002 : B/Shenzhen/407/2001 [n=5028]
- 2003 : B/Shanghai/44/2003 [n=4946]
- 2004 : B/Shanghai/361/2002 [n=6061]
- 2005 : B/Shanghai/361/2002 [n=7460]
- 2006 : B/Shanghai/361/2002 [n=6449]
- 2007 : B/Florida/7/2004 [n=6787]