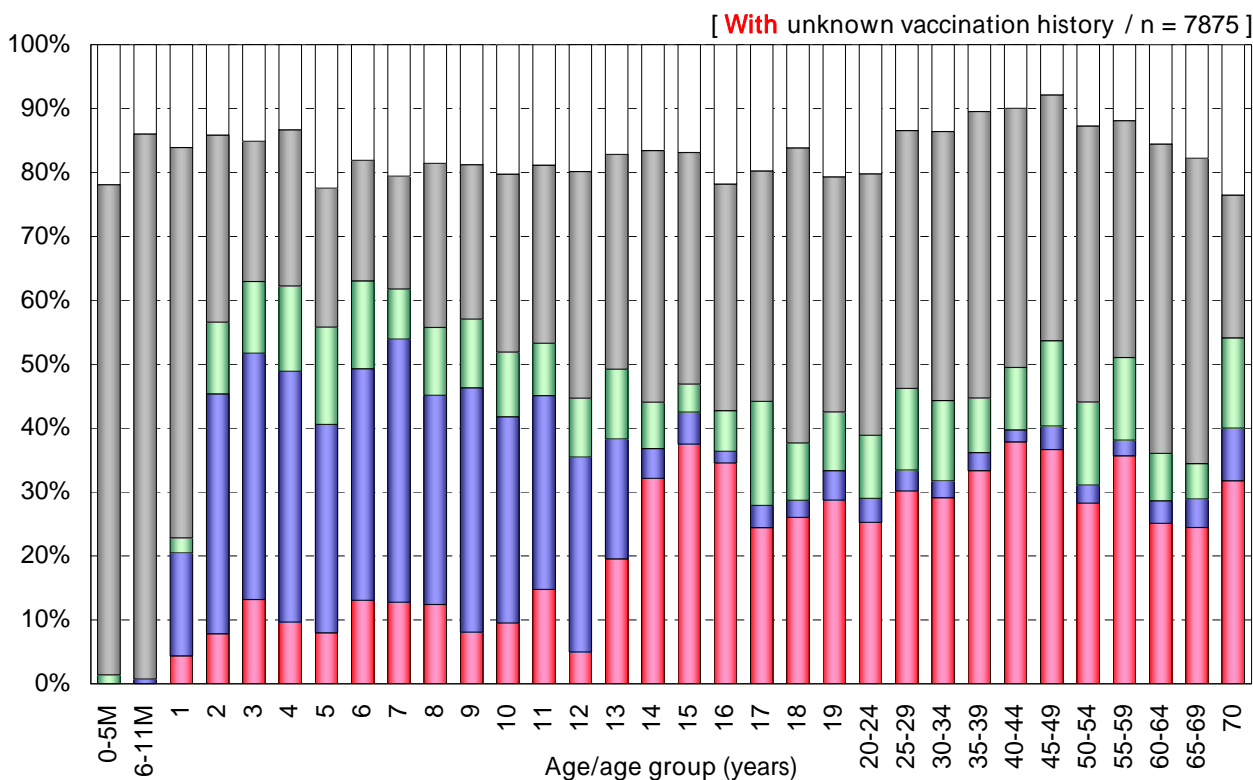
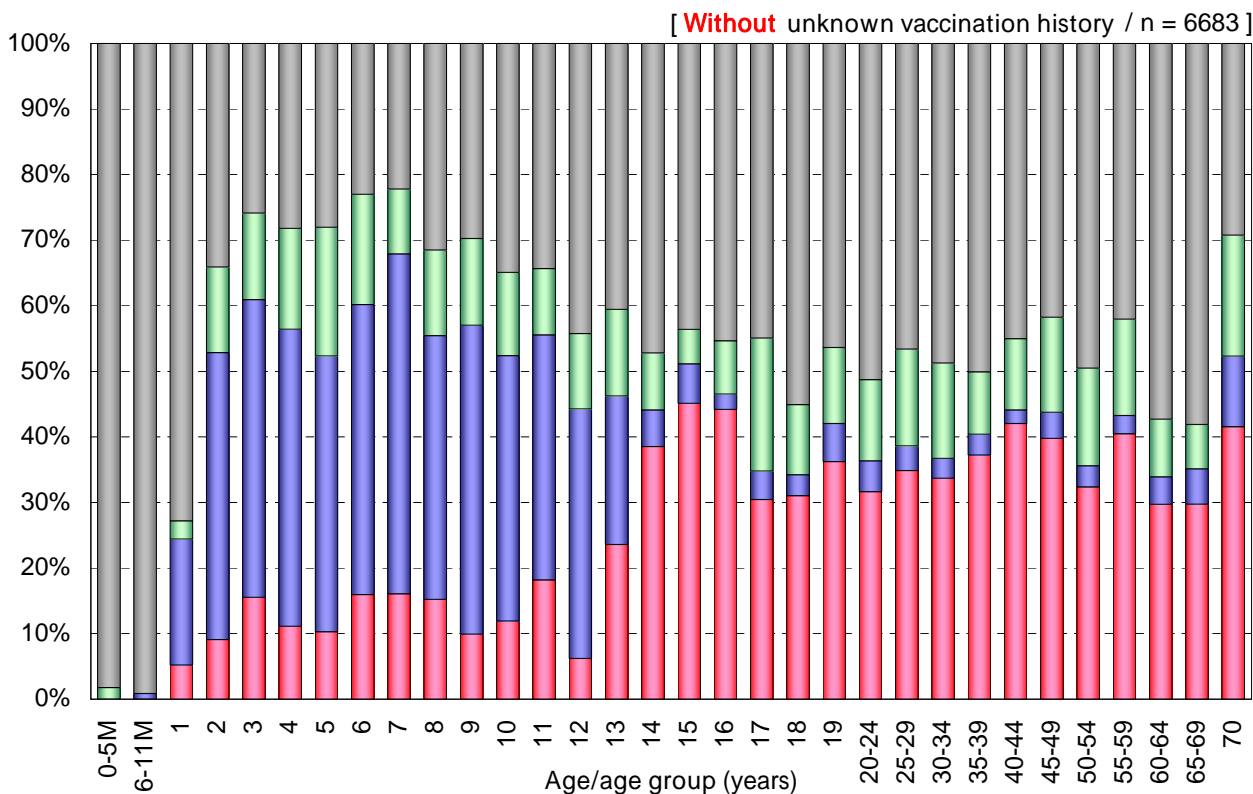


# Age distribution of influenza vaccination history in Japan, 2010/11 season

- National Epidemiological Surveillance of Vaccine-Preventable Diseases, 2011 -



Vaccination history

- 1 dose [n=1940]
- 2 doses [n=826]
- Unknown doses [n=798]
- Non-vaccinee [n=3119]
- Unknown vaccination history [n=1192]