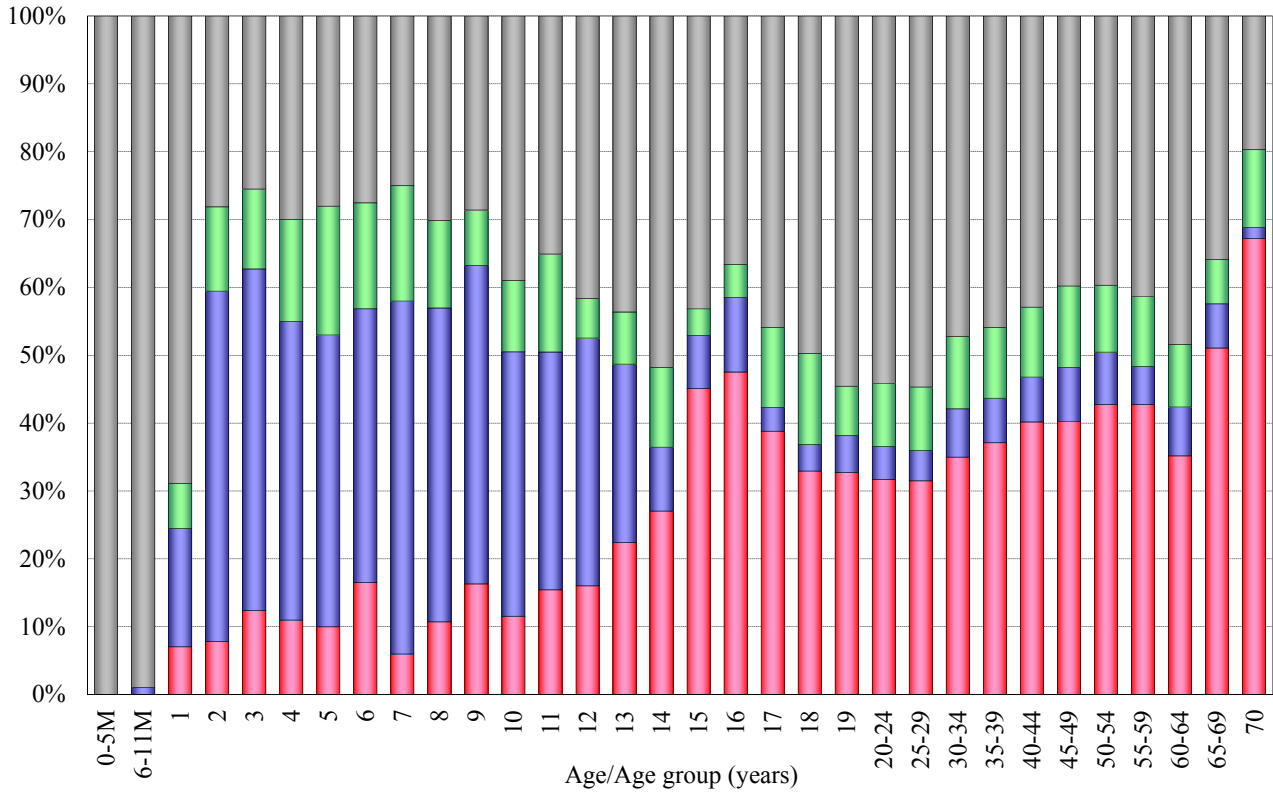


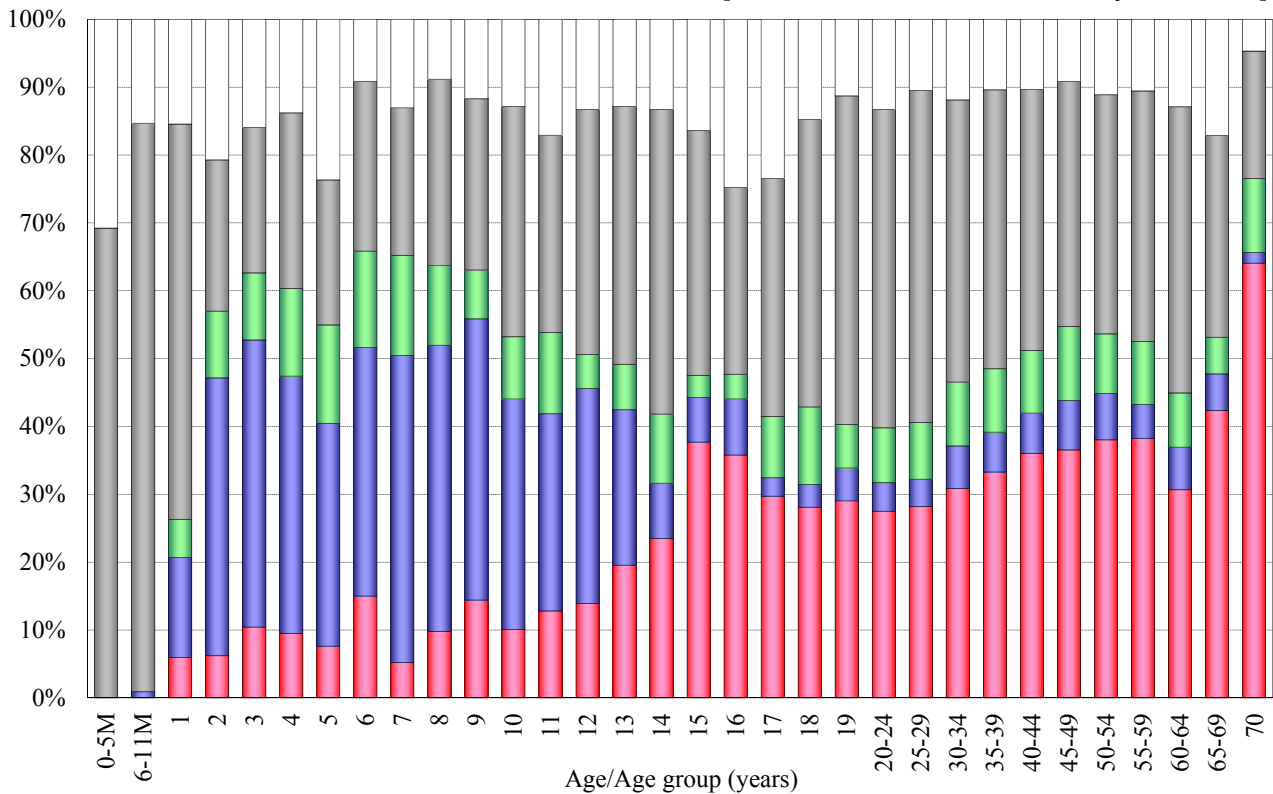
Age distribution of influenza vaccination history in Japan, 2012/13 season

- National Epidemiological Surveillance of Vaccine-Preventable Diseases, 2013 -

[Without unknown vaccination history / n = 6751]



[With unknown vaccination history / n = 7743]



■ 1 dose [n=2077]
 ■ 2 doses [n=947]
 ■ Unknown doses [n=685]
 ■ Non-vaccinee [n=3042]
 □ Unknown vaccination history [n=992]