

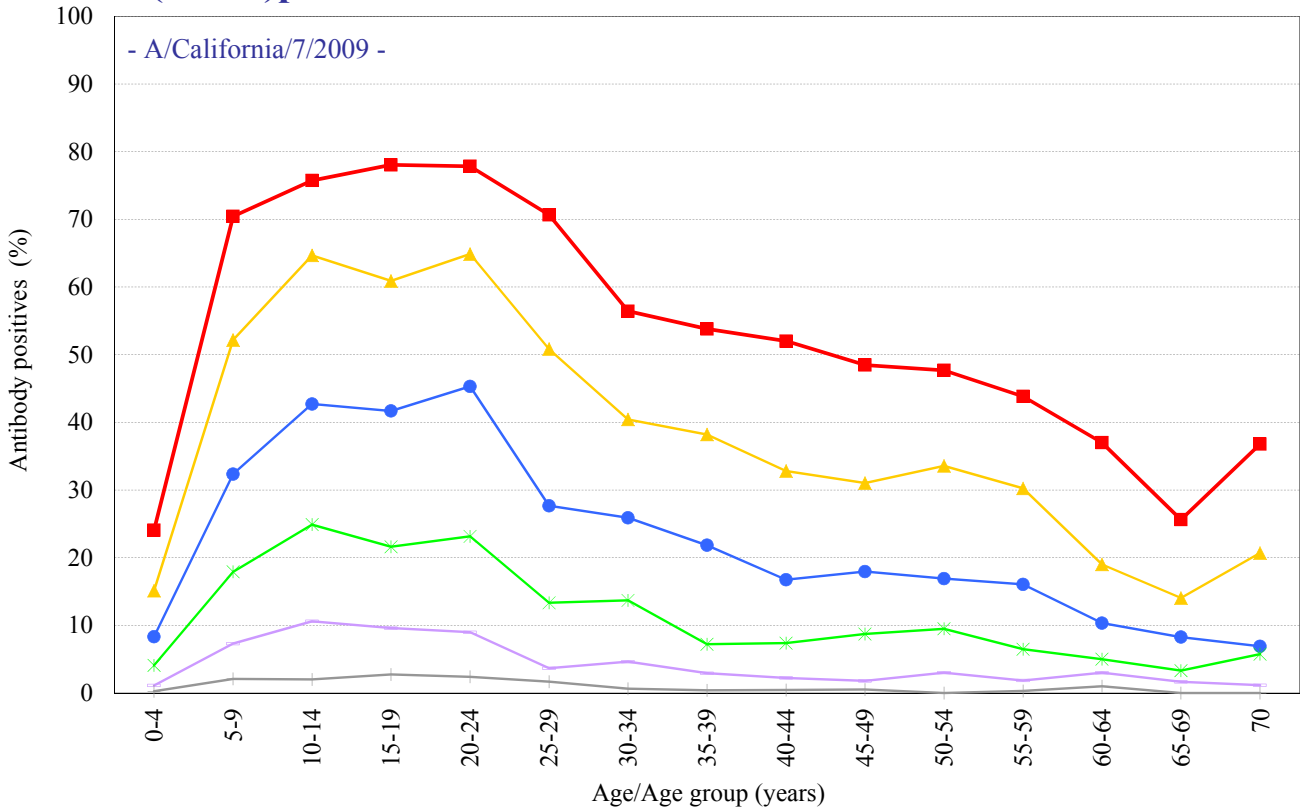
# Age distribution of influenza HI antibody positives before 2014/15 season in Japan

- National Epidemiological Surveillance of Vaccine-Preventable Diseases, 2014 -

( As of Mar. 2015 )

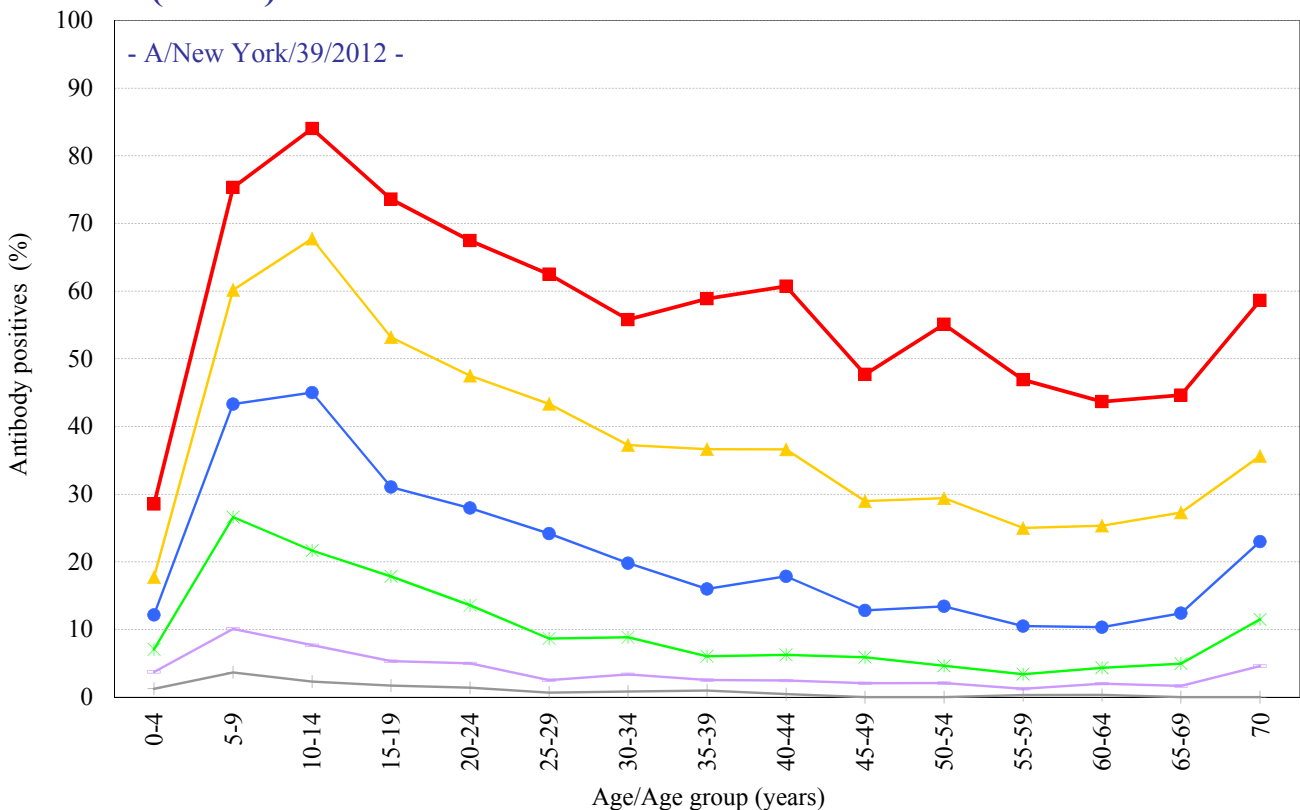
## A(H1N1)pdm09

[ Examination by hemagglutination inhibition test (HI) / n = 6806 ]



## A(H3N2)

[ Examination by hemagglutination inhibition test (HI) / n = 6806 ]



HI titer 1:40 1:80 1:160 1:320 1:640 1:1280

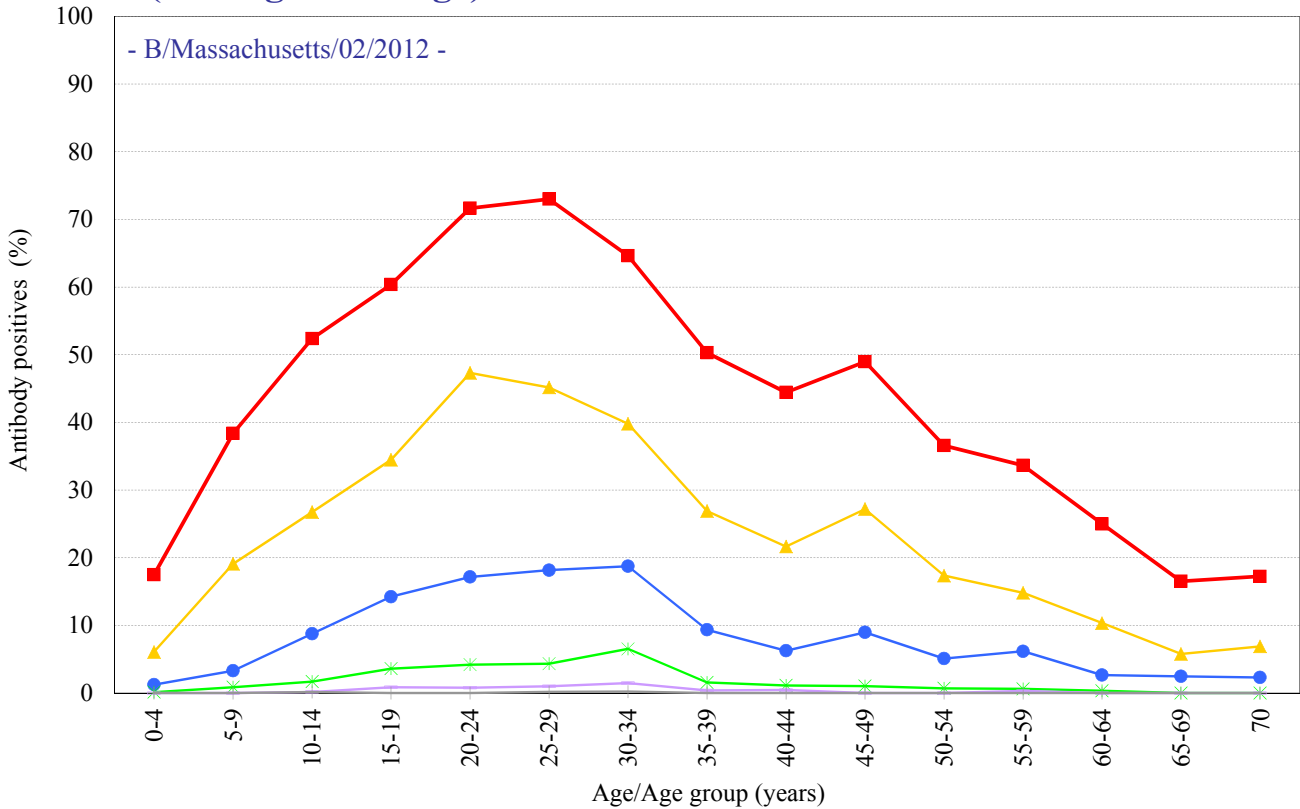
# Age distribution of influenza HI antibody positives before 2014/15 season in Japan

- National Epidemiological Surveillance of Vaccine-Preventable Diseases, 2014 -

( As of Mar. 2015 )

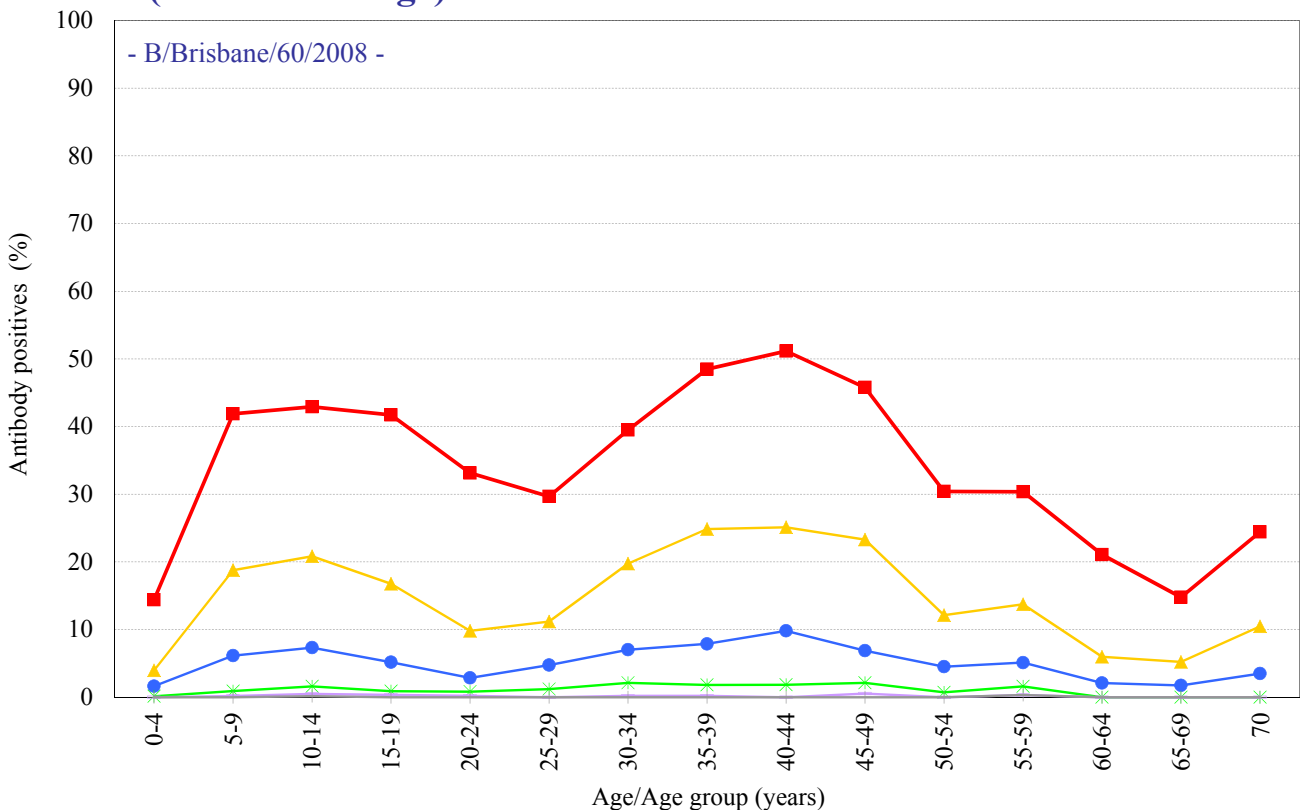
## B(Yamagata lineage)

[ Examination by hemagglutination inhibition test (HI) / n = 6807 ]



## B(Victoria lineage)

[ Examination by hemagglutination inhibition test (HI) / n = 6631 ]



HI titer    1:40    1:80    1:160    1:320    1:640    1:1280