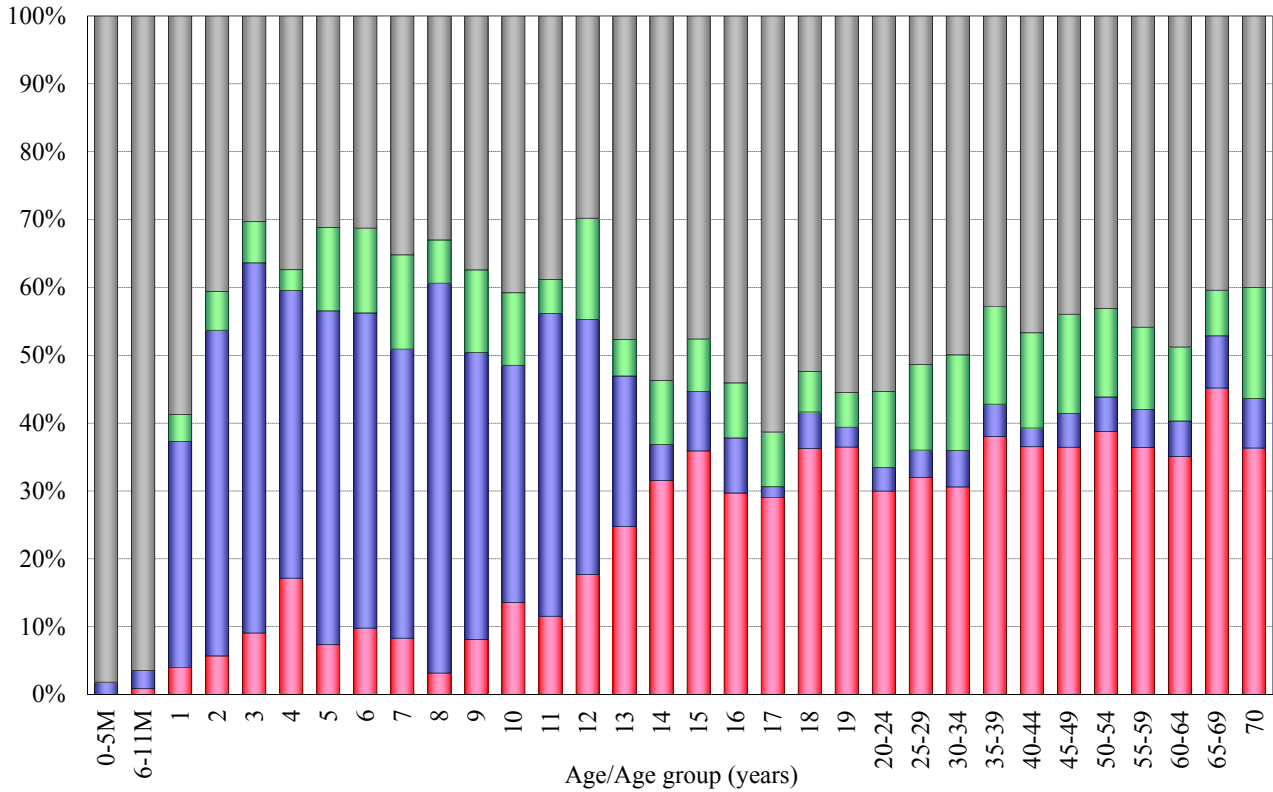


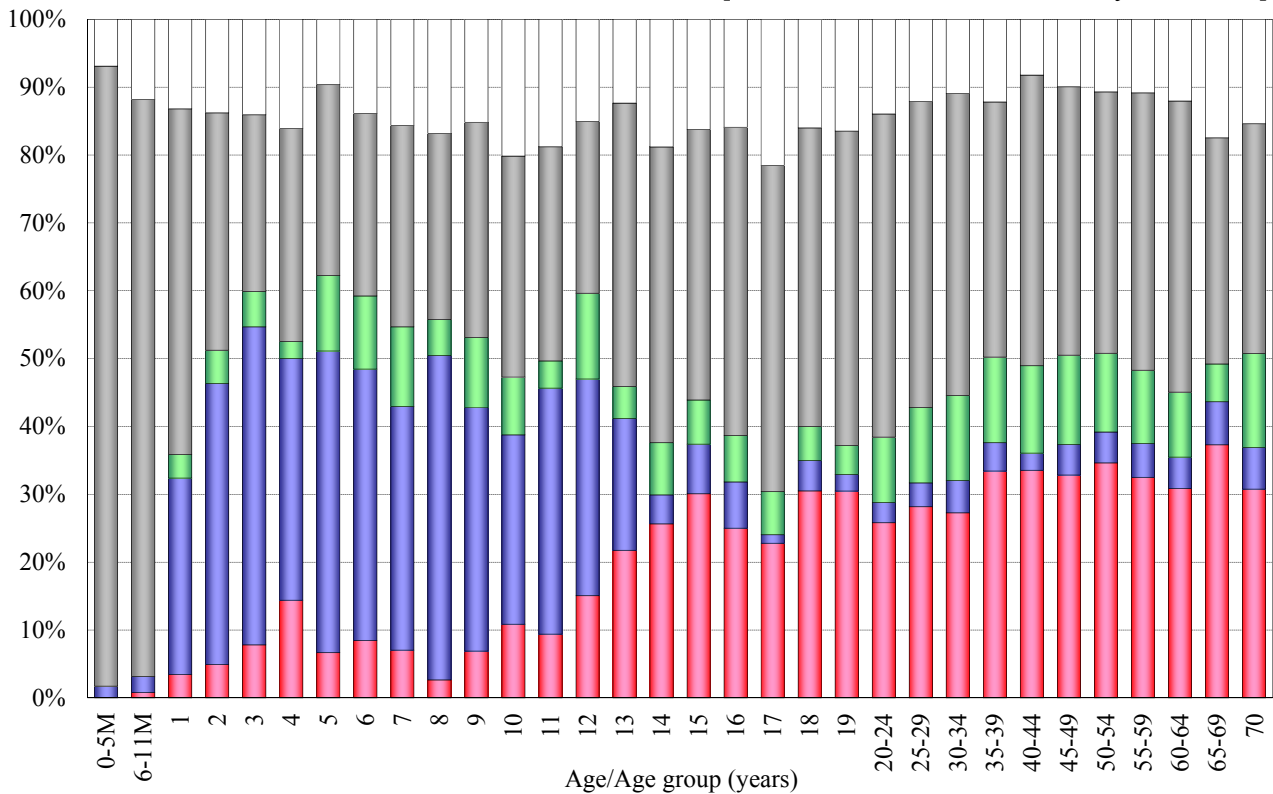
Age distribution of influenza vaccination history in Japan, 2014/15 season

- National Epidemiological Surveillance of Vaccine-Preventable Diseases, 2015 -

[Without unknown vaccination history / n = 6955]



[With unknown vaccination history / n = 7988]



■ 1 dose [n=1915]
 ■ 2 doses [n=986]
 ■ Unknown doses [n=756]
 ■ Non-vaccinee [n=3298]
 Unknown vaccination history [n=1033]