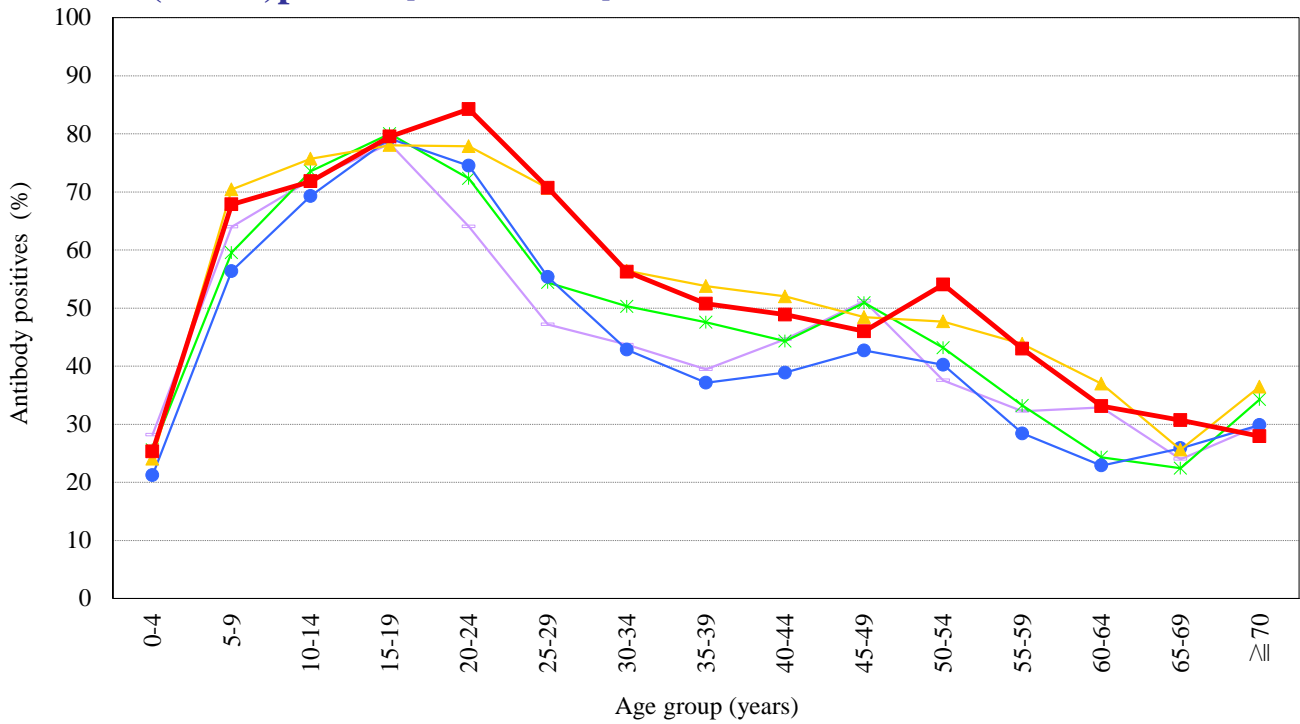


# Age distribution of influenza HI antibody positives in Japan, 2011~2015

— National Epidemiological Surveillance of Vaccine-Preventable Diseases, 2015 —

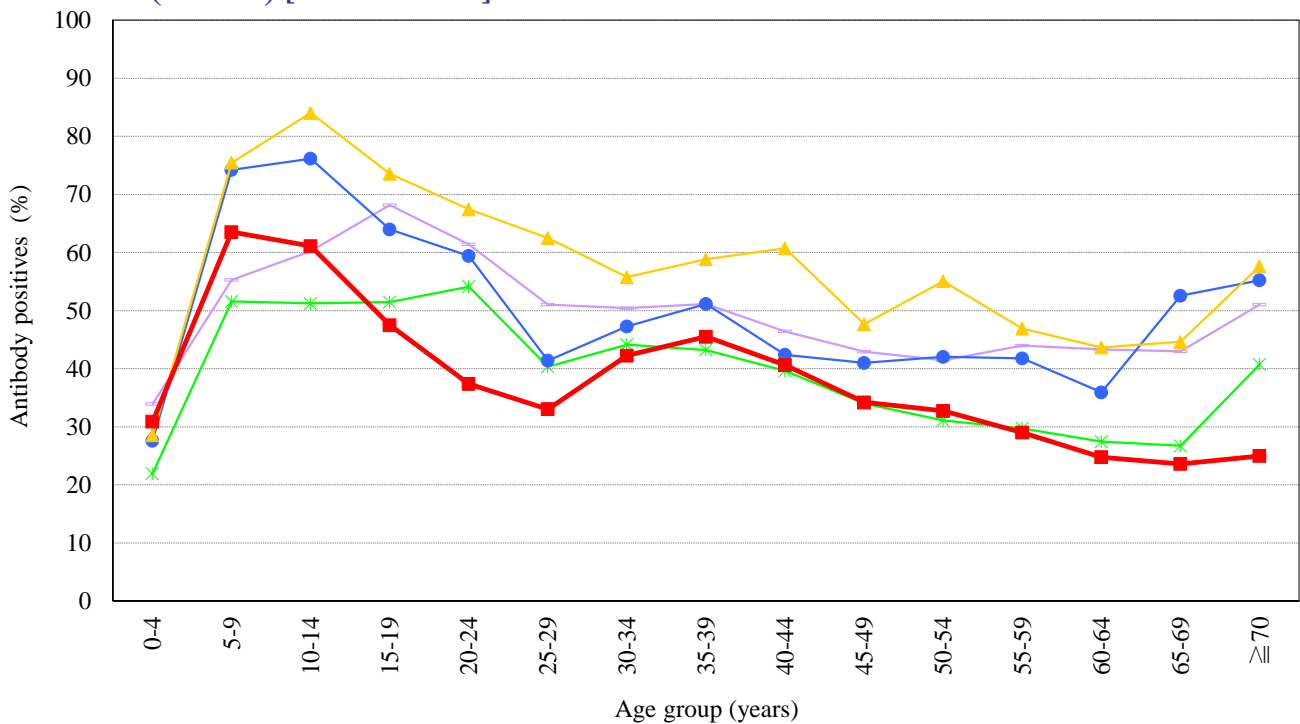
## A(H1N1)pdm09 [HI titer $\geq 1:40$ ] [ Examination by hemagglutination inhibition test (HI) ]



Year

- 2011 : A/California/7/2009 (n=7049)
- 2012 : A/California/7/2009 (n=6794)
- 2013 : A/California/7/2009 (n=6747)
- 2014 : A/California/7/2009 (n=6804)
- 2015 : A/California/7/2009 (n=6584)

## A(H3N2) [HI titer $\geq 1:40$ ] [ Examination by hemagglutination inhibition test (HI) ]



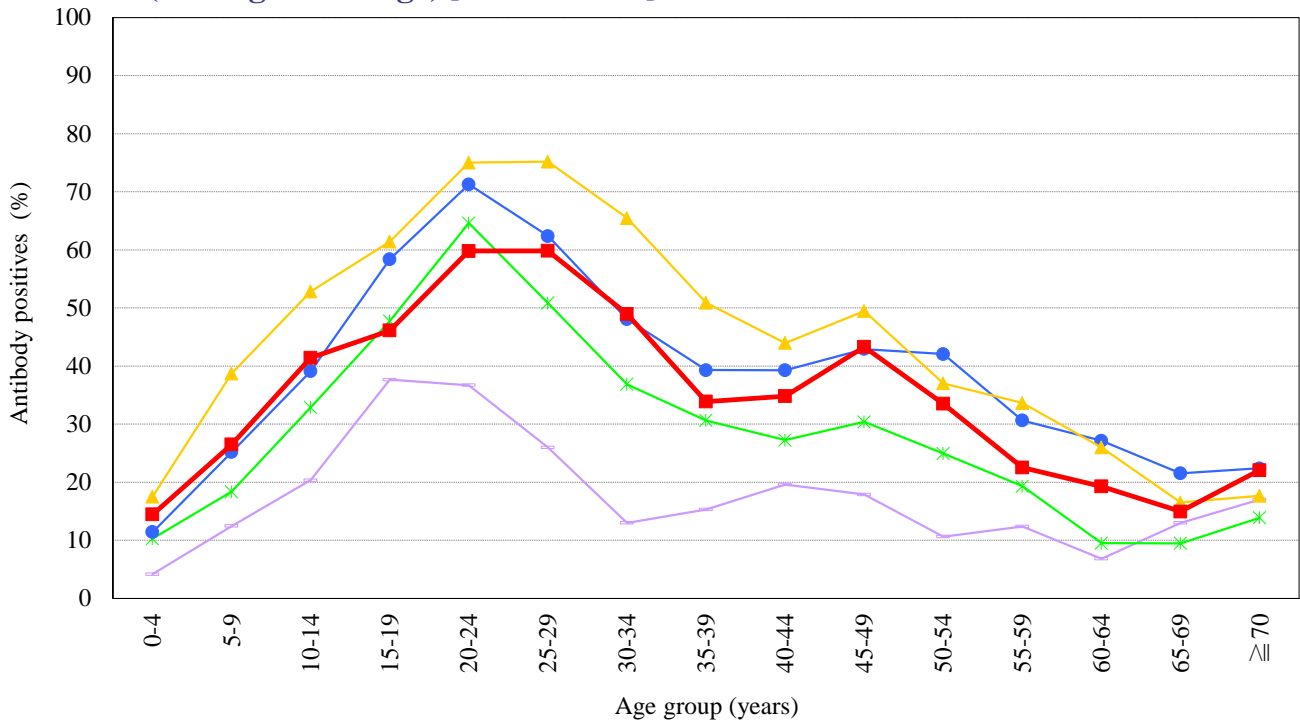
Year

- 2011 : A/Victoria/210/2009 (n=7048)
- 2012 : A/Victoria/361/2011 (n=6794)
- 2013 : A/Texas/50/2012 (n=6747)
- 2014 : A/New York/39/2012 (n=6804)
- 2015 : A/Switzerland/9715293/2013 (n=6583)

# Age distribution of influenza HI antibody positives in Japan, 2011~2015

— National Epidemiological Surveillance of Vaccine-Preventable Diseases, 2015 —

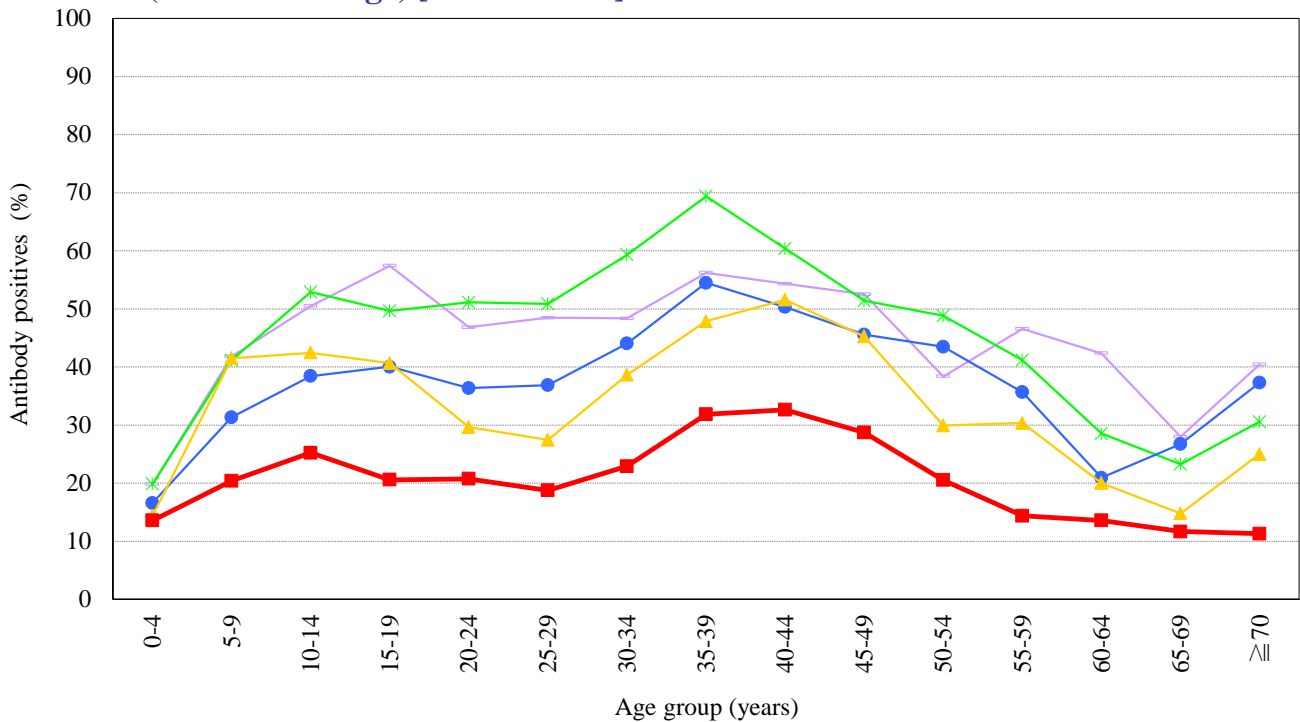
## B(Yamagata lineage) [HI titer $\geq 1:40$ ] [ Examination by hemagglutination inhibition test (HI) ]



Year

- 2011 : B/Wisconsin/1/2010 (n=7049)
- 2012 : B/Wisconsin/1/2010 (n=6793)
- 2013 : B/Massachusetts/02/2012 (n=6747)
- 2014 : B/Massachusetts/02/2012 (n=6805)
- 2015 : B/Phuket/3073/2013 (n=6584)

## B(Victoria lineage) [HI titer $\geq 1:40$ ] [ Examination by hemagglutination inhibition test (HI) ]



Year

- 2011 : B/Brisbane/60/2008 (n=7049)
- 2012 : B/Brisbane/60/2008 (n=6793)
- 2013 : B/Brisbane/60/2008 (n=6747)
- 2014 : B/Brisbane/60/2008 (n=6629)
- 2015 : B/Texas/2/2013 (n=6408)