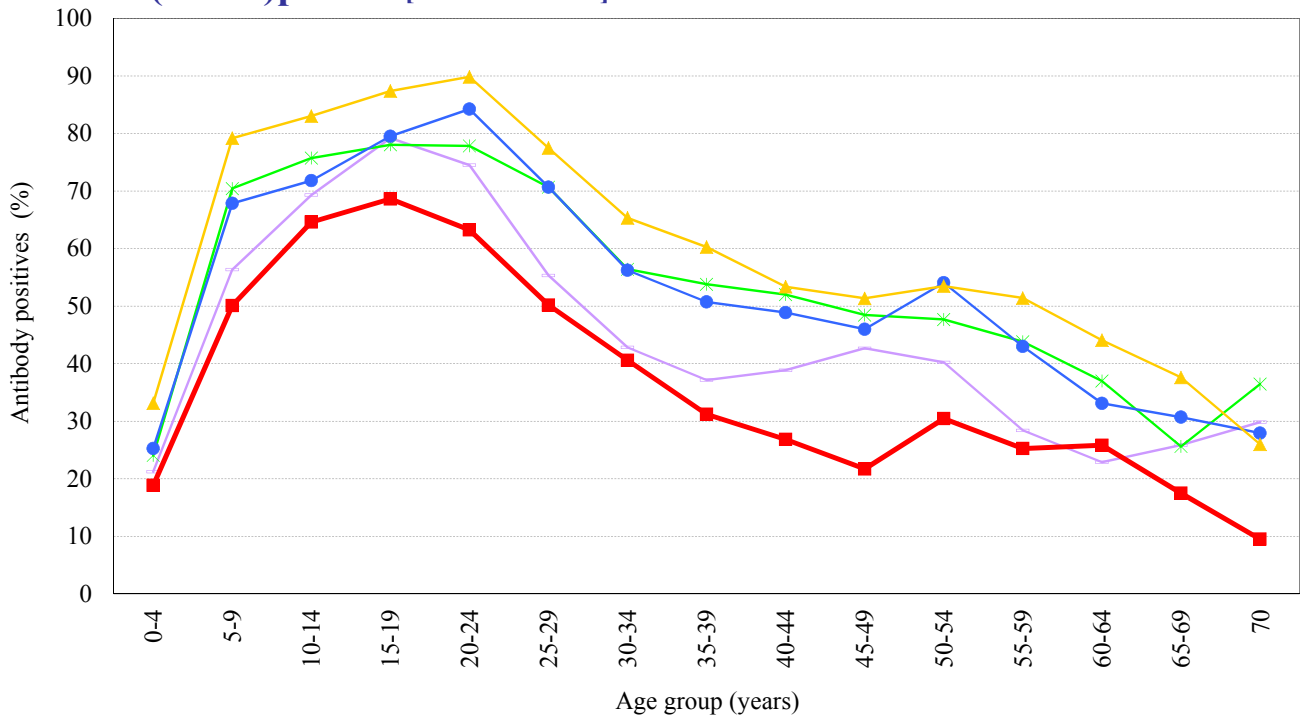


Age distribution of influenza HI antibody positives in Japan, 2013 ~ 2017

- National Epidemiological Surveillance of Vaccine-Preventable Diseases, 2017 -

(As of May 2018)

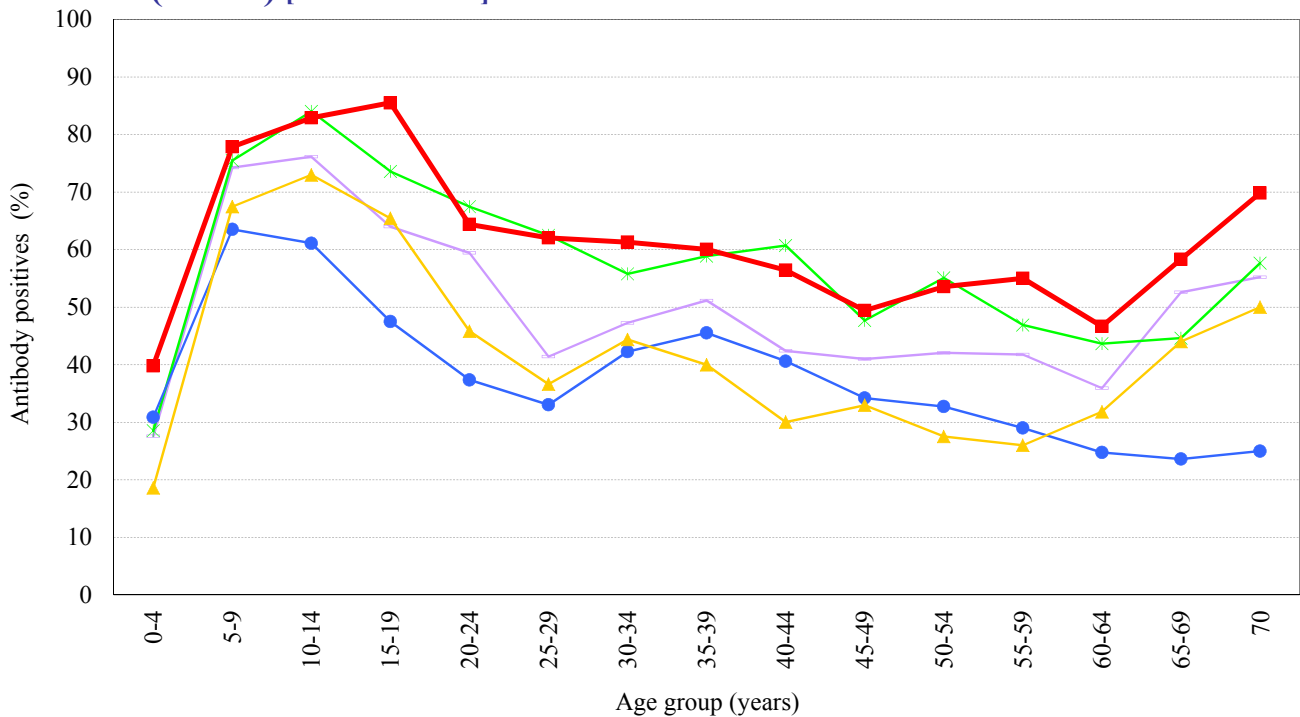
A(H1N1)pdm09 [HI titer 1:40] [Examination by hemagglutination inhibition test (HI)]



Year

- 2013 : A/California/7/2009 (n=6,747)
- 2014 : A/California/7/2009 (n=6,804)
- 2015 : A/California/7/2009 (n=6,584)
- 2016 : A/California/7/2009 (n=5,883)
- 2017 : A/Singapore/GP1908/2015 (n=5,864)

A(H3N2) [HI titer 1:40] [Examination by hemagglutination inhibition test (HI)]



Year

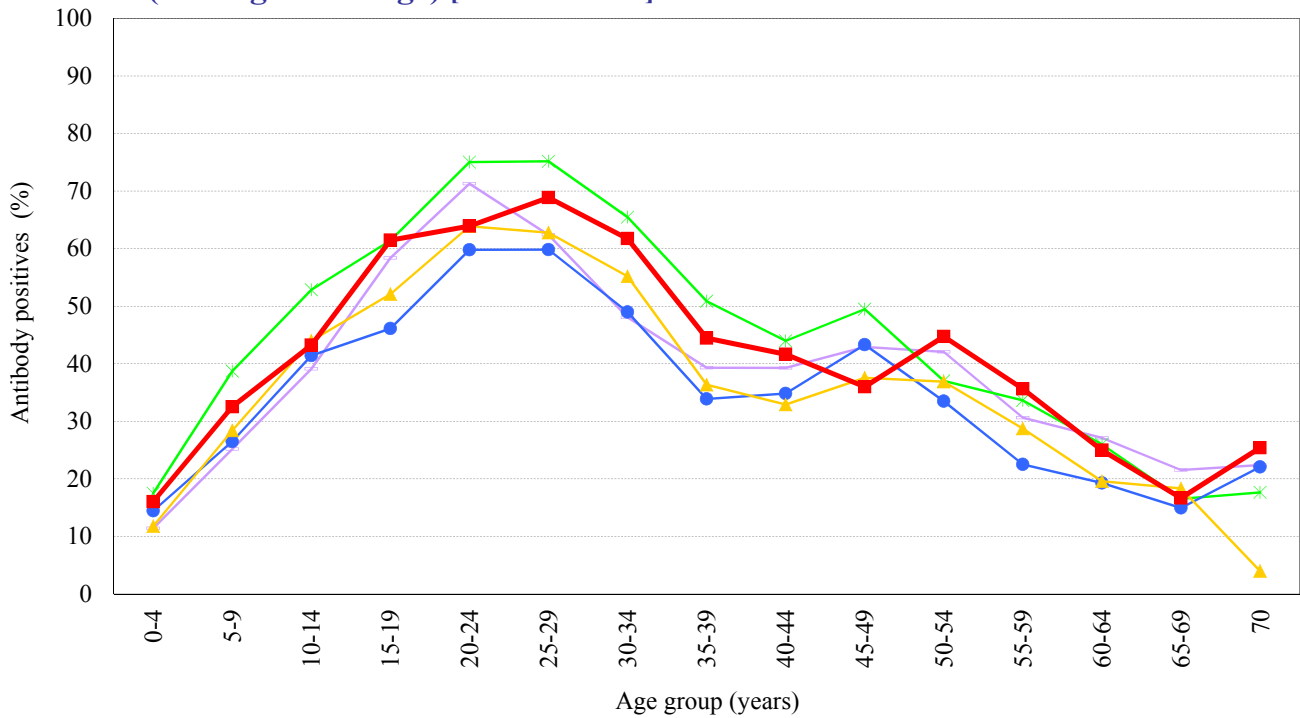
- 2013 : A/Texas/50/2012 (n=6,747)
- 2014 : A/New York/39/2012 (n=6,804)
- 2015 : A/Switzerland/9715293/2013 (n=6,583)
- 2016 : A/Hong Kong/4801/2014 (n=5,881)
- 2017 : A/Hong Kong/4801/2014 (n=5,864)

Age distribution of influenza HI antibody positives in Japan, 2013 ~ 2017

- National Epidemiological Surveillance of Vaccine-Preventable Diseases, 2017 -

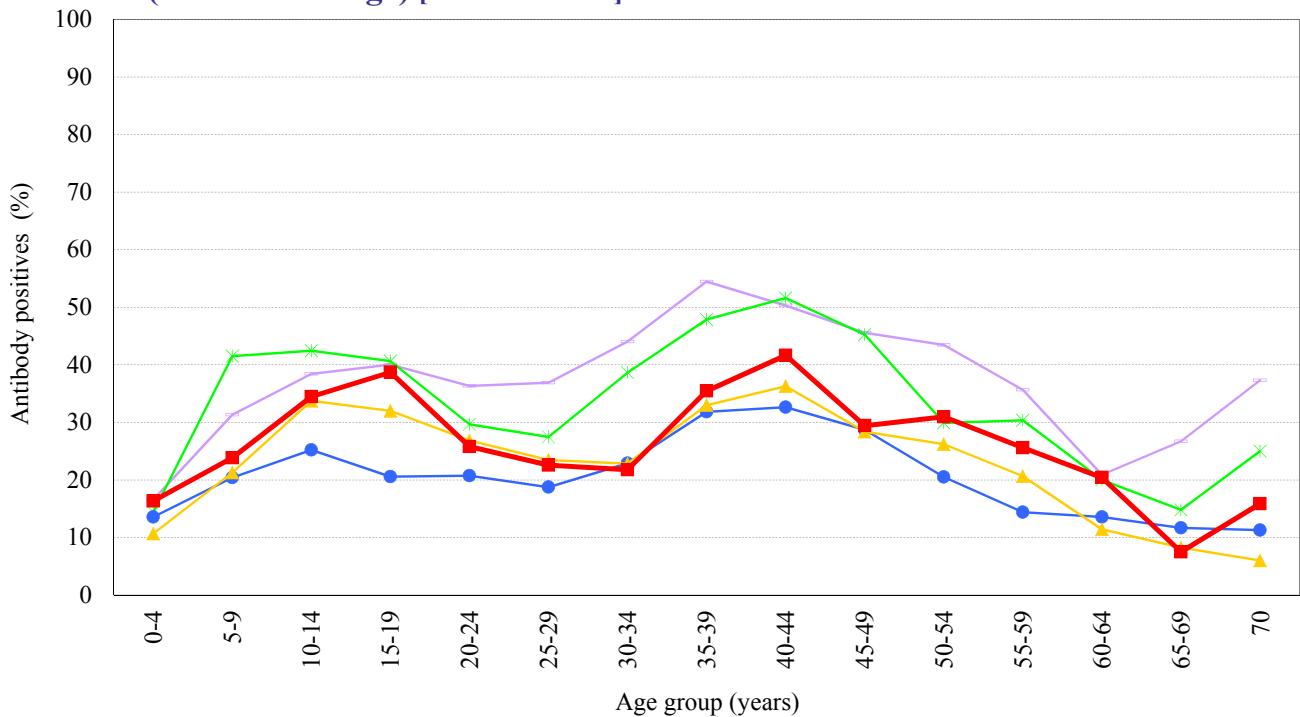
(As of May 2018)

B(Yamagata lineage) [HI titer 1:40] [Examination by hemagglutination inhibition test (HI)]



Year — 2013 : B/Massachusetts/02/2012 (n=6,747) — 2014 : B/Massachusetts/02/2012 (n=6,805)
 — 2015 : B/Phuket/3073/2013 (n=6,584) — 2016 : B/Phuket/3073/2013 (n=5,883)
 — 2017 : B/Phuket/3073/2013 (n=5,863)

B(Victoria lineage) [HI titer 1:40] [Examination by hemagglutination inhibition test (HI)]



Year — 2013 : B/Brisbane/60/2008 (n=6,747) — 2014 : B/Brisbane/60/2008 (n=6,629)
 — 2015 : B/Texas/2/2013 (n=6,408) — 2016 : B/Texas/2/2013 (n=5,883)
 — 2017 : B/Texas/2/2013 (n=5,863)