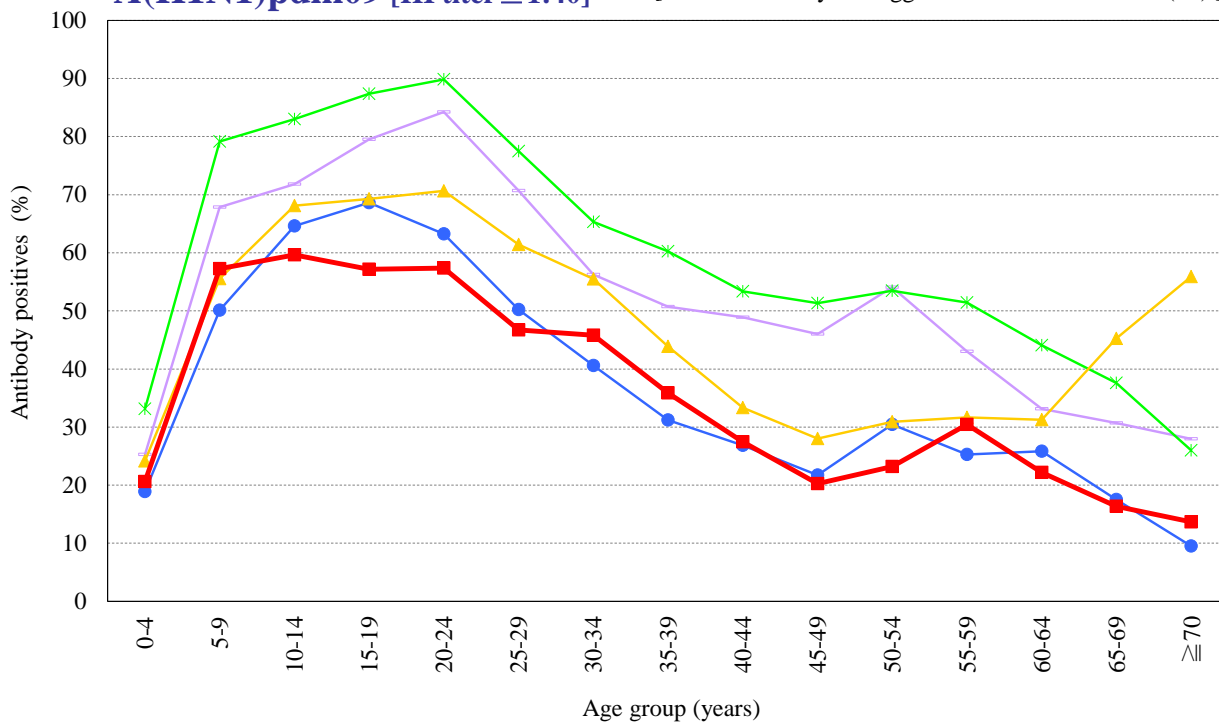


Age distribution of influenza HI antibody positives in Japan, 2015~2019

— National Epidemiological Surveillance of Vaccine-Preventable Diseases, 2019 —

(As of July 2020)

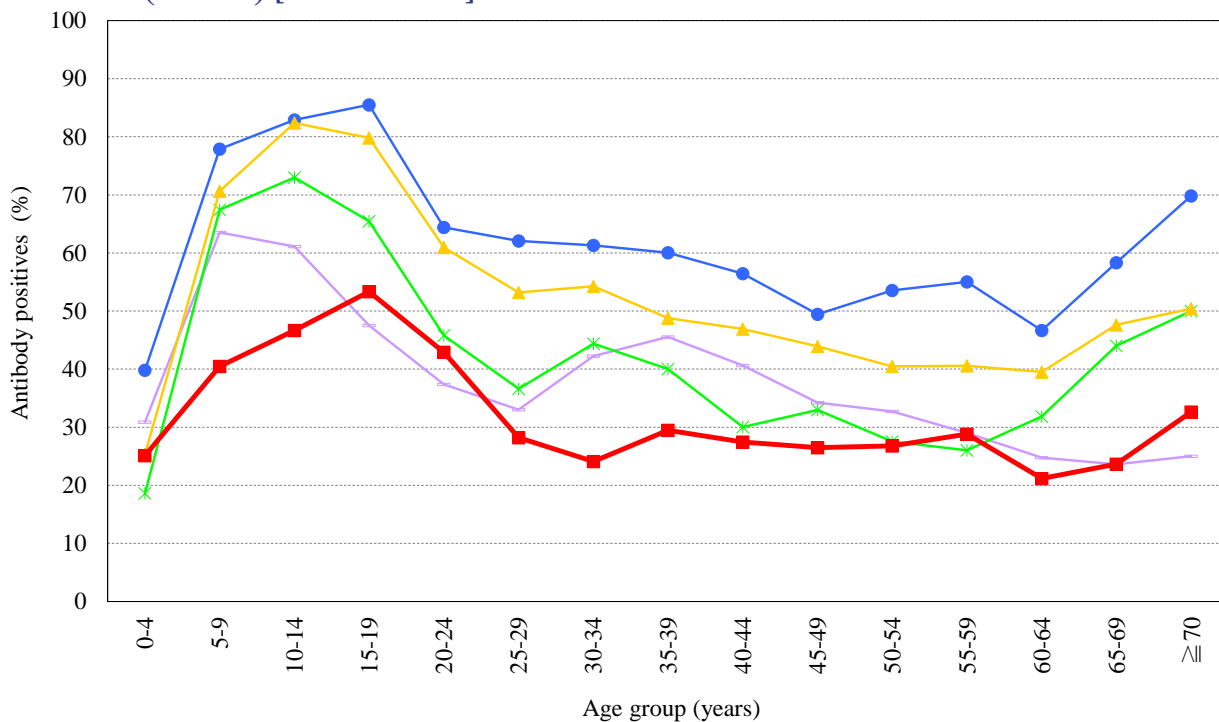
A(H1N1)pdm09 [HI titer $\geq 1:40$] [Examination by hemagglutination inhibition test (HI)]



Year

- 2015 : A/California/7/2009 (n=6,584)
- 2016 : A/California/7/2009 (n=5,883)
- 2017 : A/Singapore/GP1908/2015 (n=5,864)
- 2018 : A/Singapore/GP1908/2015 (n=6,569)
- 2019 : A/Brisbane/02/2018 (n=5,446)

A(H3N2) [HI titer $\geq 1:40$] [Examination by hemagglutination inhibition test (HI)]



Year

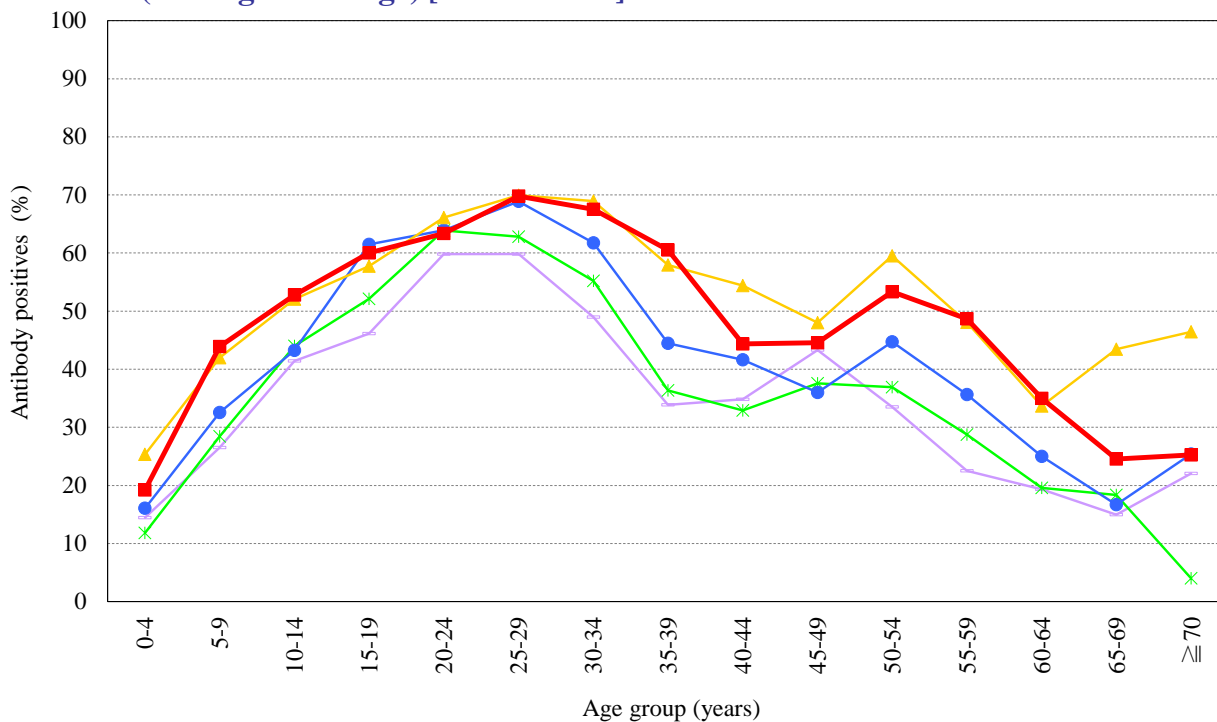
- 2015 : A/Switzerland/9715293/2013 (n=6,583)
- 2016 : A/Hong Kong/4801/2014 (n=5,881)
- 2017 : A/Hong Kong/4801/2014 (n=5,864)
- 2018 : A/Singapore/INFIMH-16-0019/2016 (n=6,569)
- 2019 : A/Kansas/14/2017 (n=5,446)

Age distribution of influenza HI antibody positives in Japan, 2015~2019

— National Epidemiological Surveillance of Vaccine-Preventable Diseases, 2019 —

(As of July 2020)

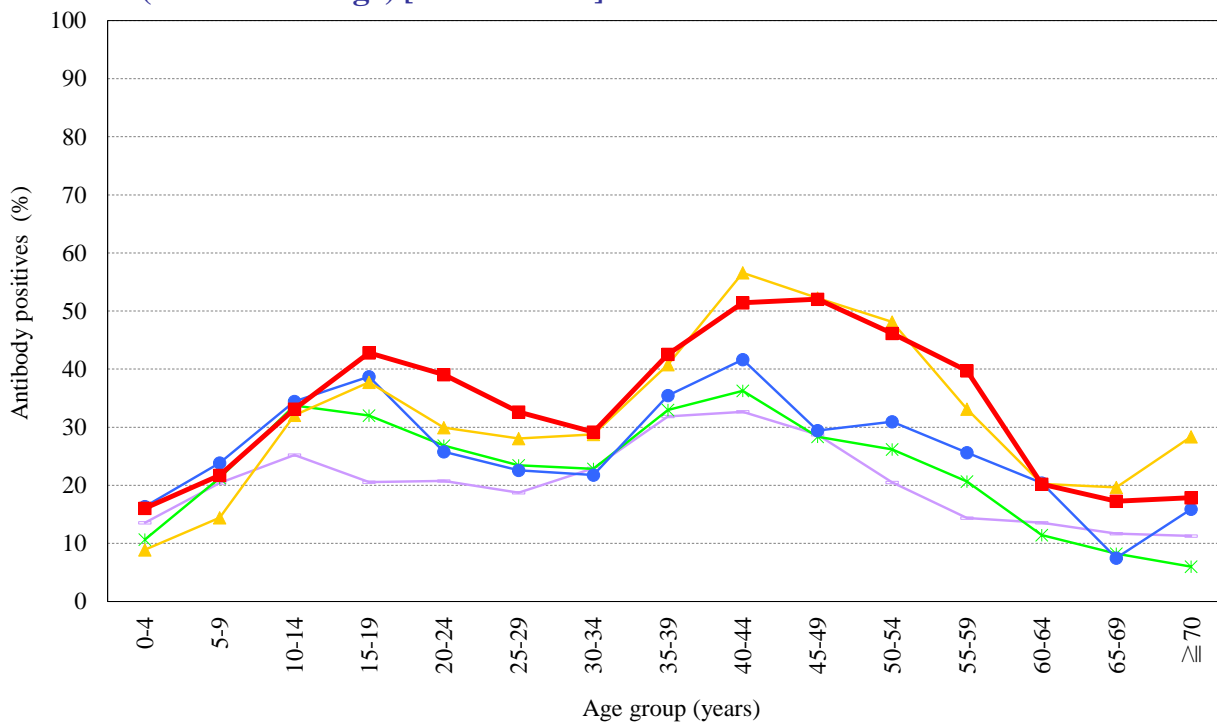
B(Yamagata lineage) [HI titer $\geq 1:40$] [Examination by hemagglutination inhibition test (HI)]



Year

- 2015 : B/Phuket/3073/2013 (n=6,584)
- 2016 : B/Phuket/3073/2013 (n=5,883)
- 2017 : B/Phuket/3073/2013 (n=5,863)
- 2018 : B/Phuket/3073/2013 (n=6,569)
- 2019 : B/Phuket/3073/2013 (n=5,446)

B(Victoria lineage) [HI titer $\geq 1:40$] [Examination by hemagglutination inhibition test (HI)]



Year

- 2015 : B/Texas/2/2013 (n=6,408)
- 2016 : B/Texas/2/2013 (n=5,883)
- 2017 : B/Texas/2/2013 (n=5,863)
- 2018 : B/Maryland/15/2016 (n=6,569)
- 2019 : B/Maryland/15/2016 (n=5,446)