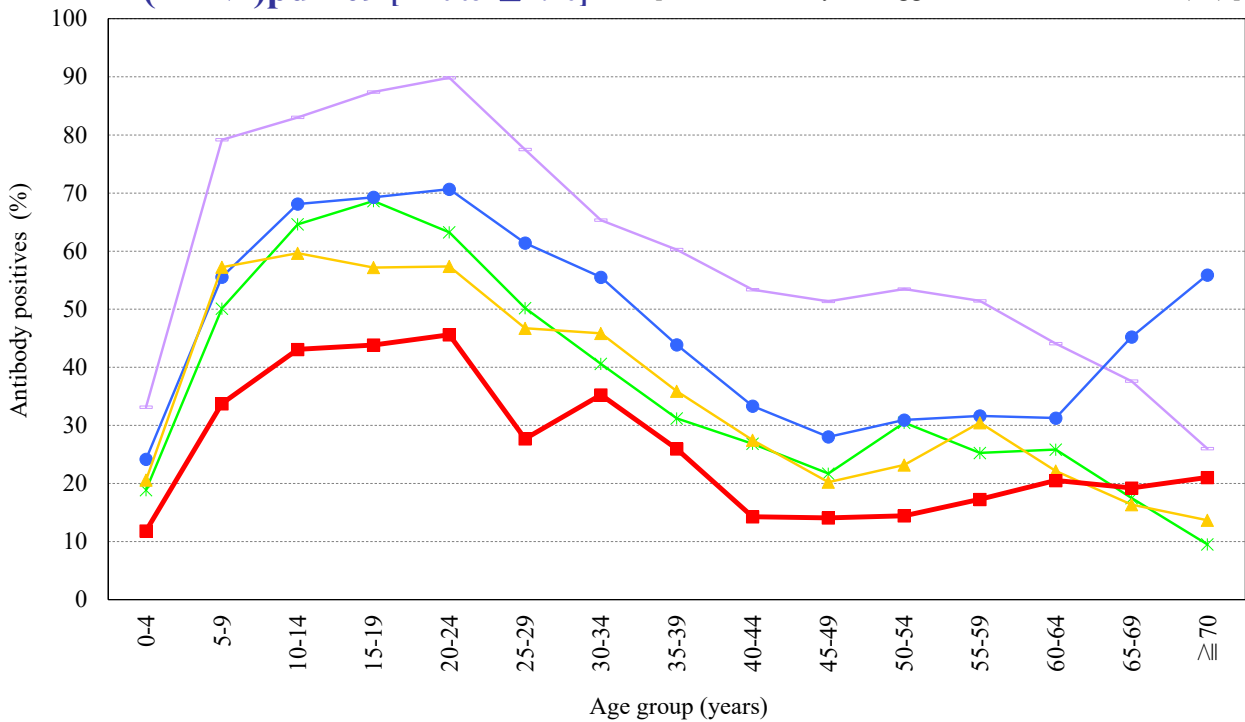


Age distribution of influenza HI antibody positives in Japan, 2016~2020

— National Epidemiological Surveillance of Vaccine-Preventable Diseases, 2020 —

(As of June 2021)

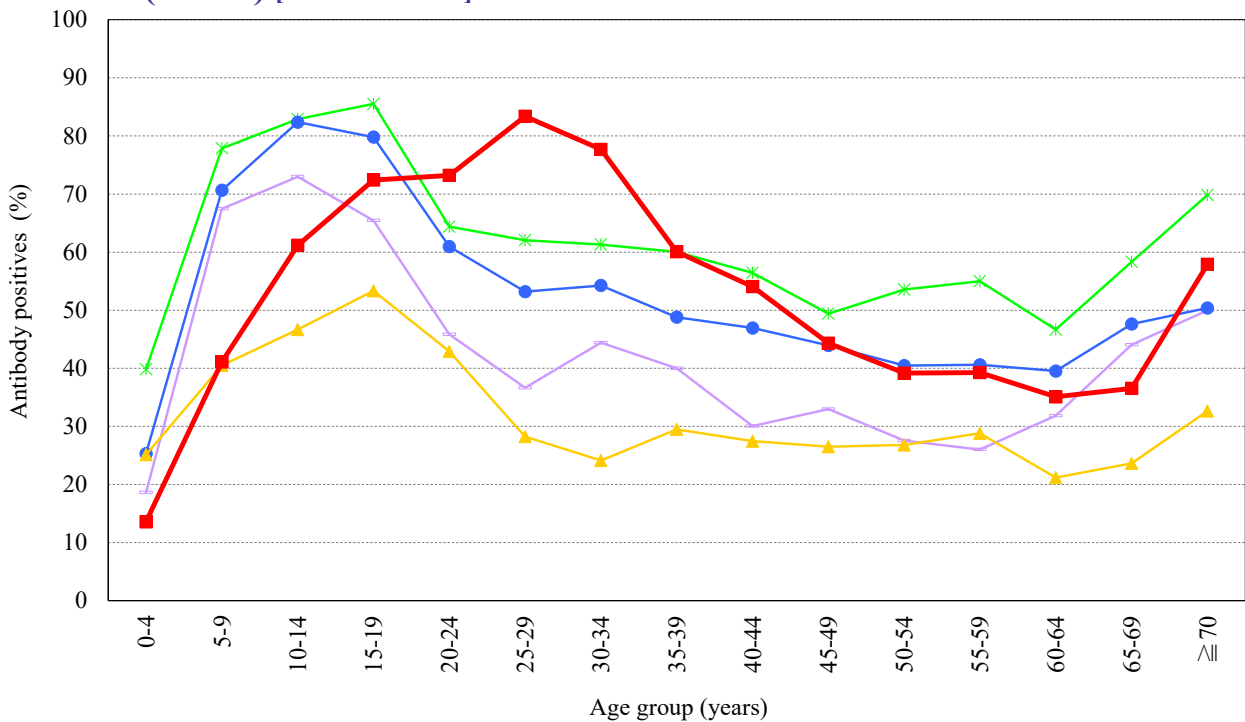
A(H1N1)pdm09 [HI titer $\geq 1:40$] [Examination by hemagglutination inhibition test (HI)]



Year

- 2016 : A/カリフォルニア/7/2009 (n=5,883)
- 2017 : A/シンガポール/GP1908/2015 (n=5,864)
- 2018 : A/シンガポール/GP1908/2015 (n=6,569)
- 2019 : A/ブリスベン/02/2018 (n=5,446)
- 2020 : A/広東-茂南/SWL1536/2019 (n=3,244)

A(H3N2) [HI titer $\geq 1:40$] [Examination by hemagglutination inhibition test (HI)]



Year

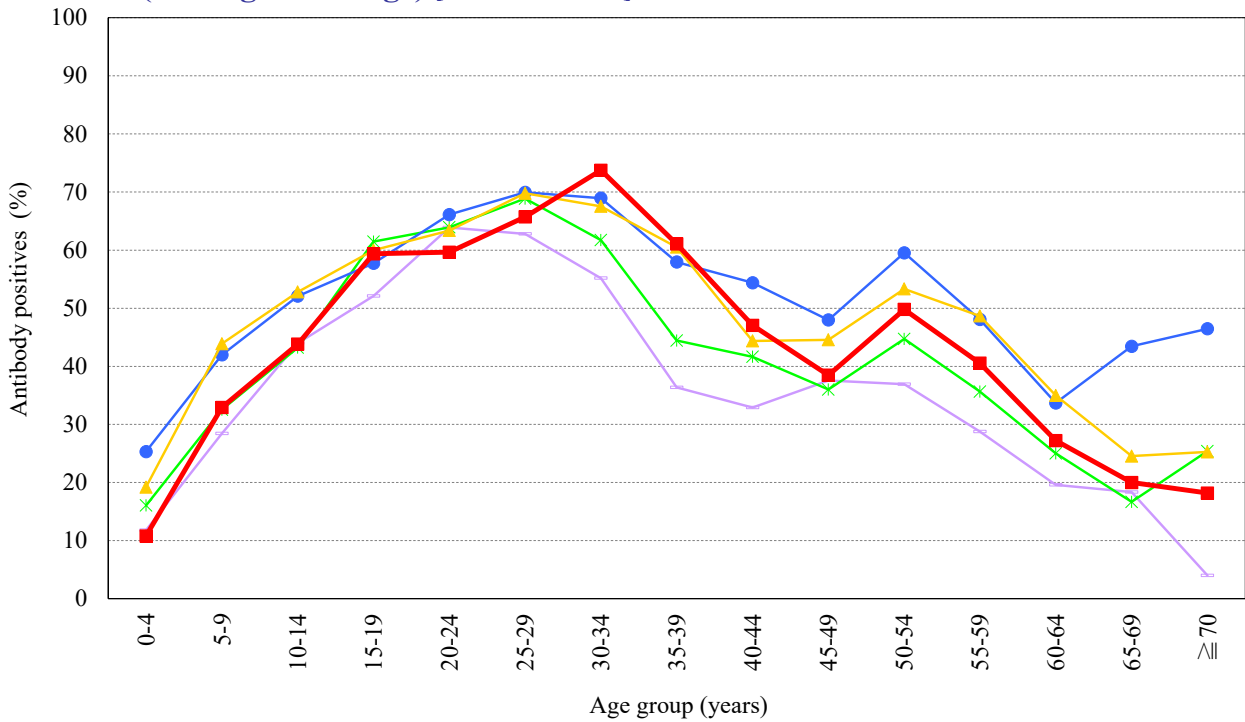
- 2016 : A/香港/4801/2014 (n=5,881)
- 2017 : A/香港/4801/2014 (n=5,864)
- 2018 : A/シンガポール/INFIMH-16-0019/2016 (n=6,569)
- 2019 : A/カンザス/14/2017 (n=5,446)
- 2020 : A/香港/2671/2019 (n=3,244)

Age distribution of influenza HI antibody positives in Japan, 2016~2020

— National Epidemiological Surveillance of Vaccine-Preventable Diseases, 2020 —

(As of June 2021)

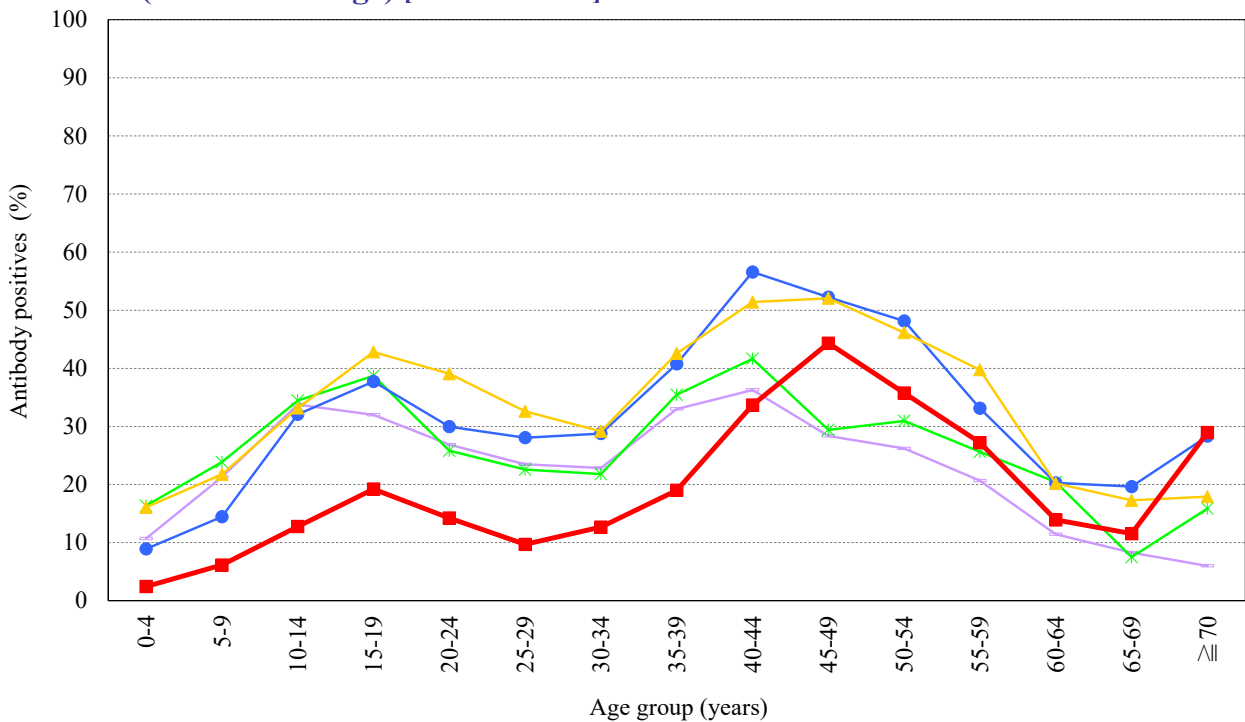
B(Yamagata lineage) [HI titer $\geq 1:40$] [Examination by hemagglutination inhibition test (HI)]



Year

- 2016 : B/ブーケット/3073/2013 (n=5,883)
- 2017 : B/ブーケット/3073/2013 (n=5,863)
- 2018 : B/ブーケット/3073/2013 (n=6,569)
- 2019 : B/ブーケット/3073/2013 (n=5,446)
- 2020 : B/ブーケット/3073/2013 (n=3,108)

B(Victoria lineage) [HI titer $\geq 1:40$] [Examination by hemagglutination inhibition test (HI)]



Year

- 2016 : B/テキサス/2/2013 (n=5,883)
- 2017 : B/テキサス/2/2013 (n=5,863)
- 2018 : B/メリーランド/15/2016 (n=6,569)
- 2019 : B/メリーランド/15/2016 (n=5,446)
- 2020 : B/ビクトリア/705/2018 (n=3,244)