

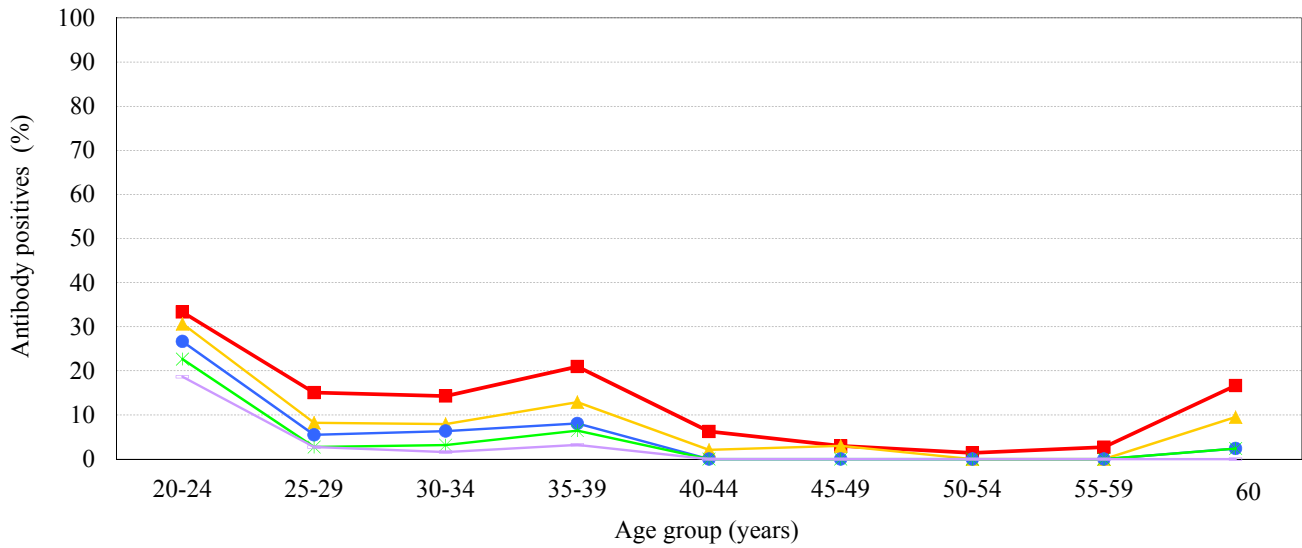
Age distribution of HPV-16 IgG antibody positives in Japan, 2017

- National Epidemiological Surveillance of Vaccine-Preventable Diseases, 2017 -

(As of May 2018)

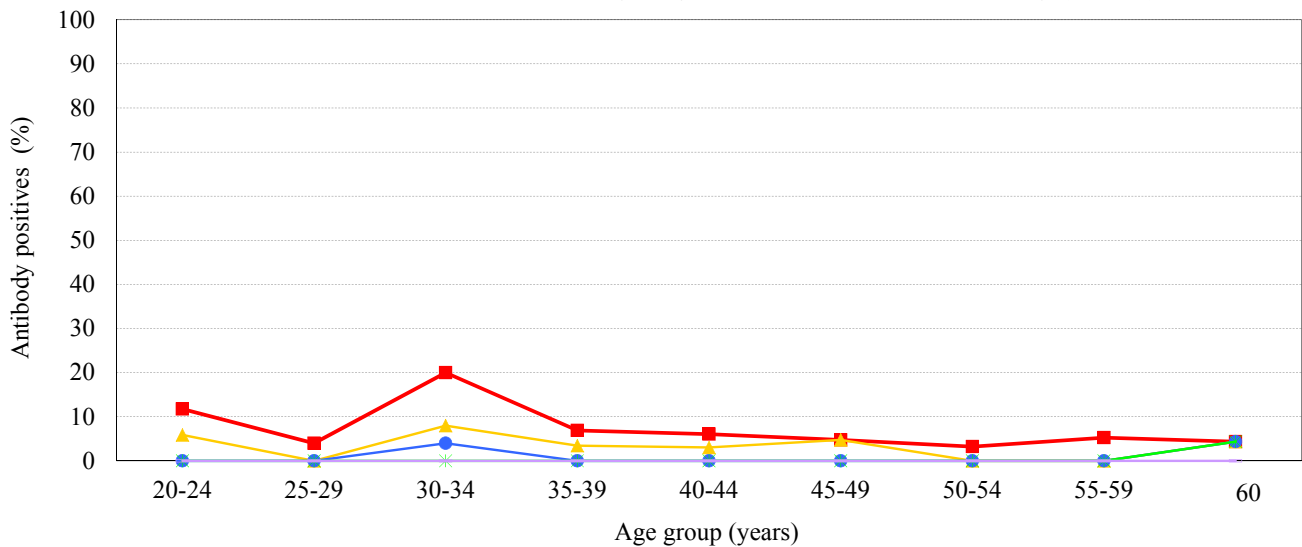
Male & Female

[Examination by enzyme-linked immunosorbent assay (ELISA) / n = 539]



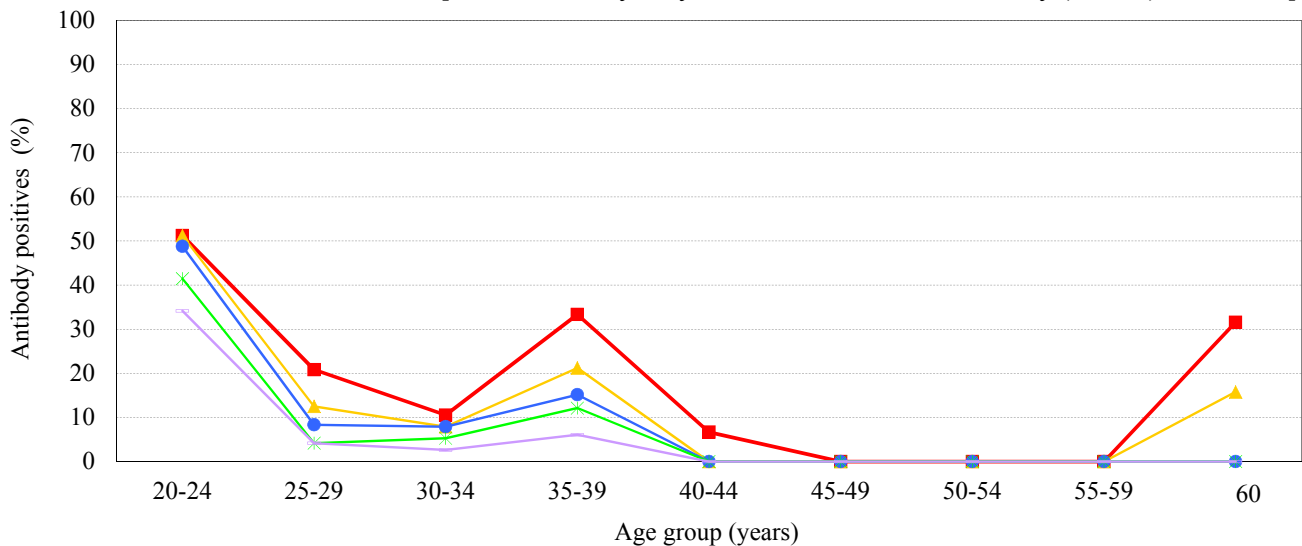
Male

[Examination by enzyme-linked immunosorbent assay (ELISA) / n = 261]



Female

[Examination by enzyme-linked immunosorbent assay (ELISA) / n = 277]



IgG titer ■ 4 ▲ 8 ● 16 * 32 * 64 (IU/mL)