

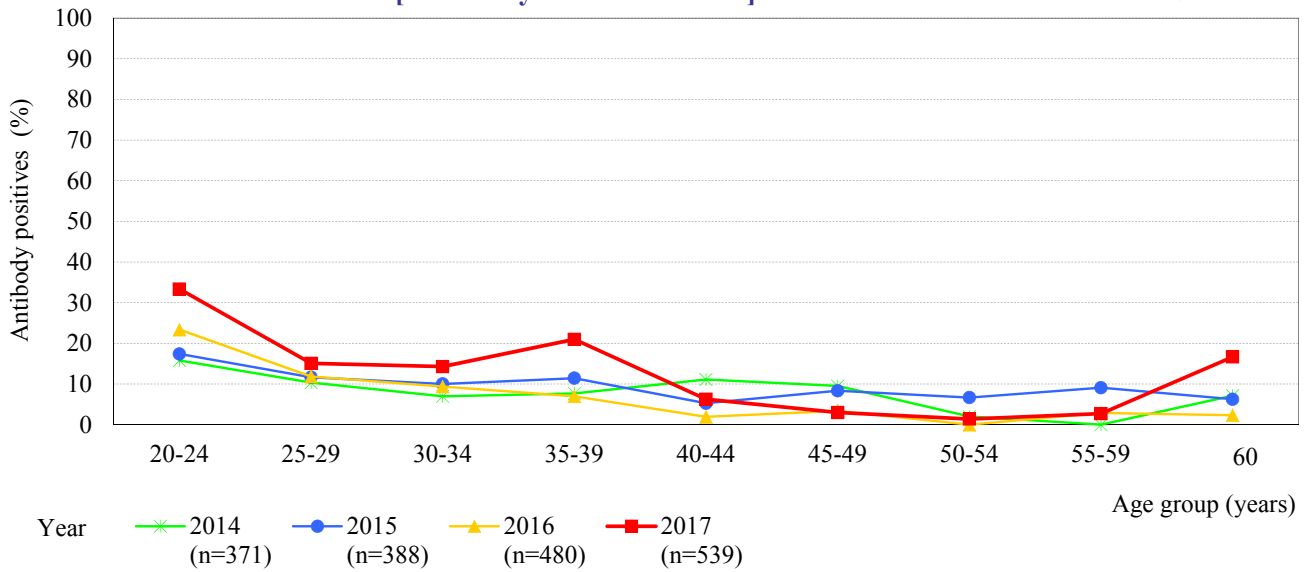
# Age distribution of HPV-16 IgG antibody positives in Japan, 2014 ~ 2017

- National Epidemiological Surveillance of Vaccine-Preventable Diseases, 2017 -

( As of May 2018 )

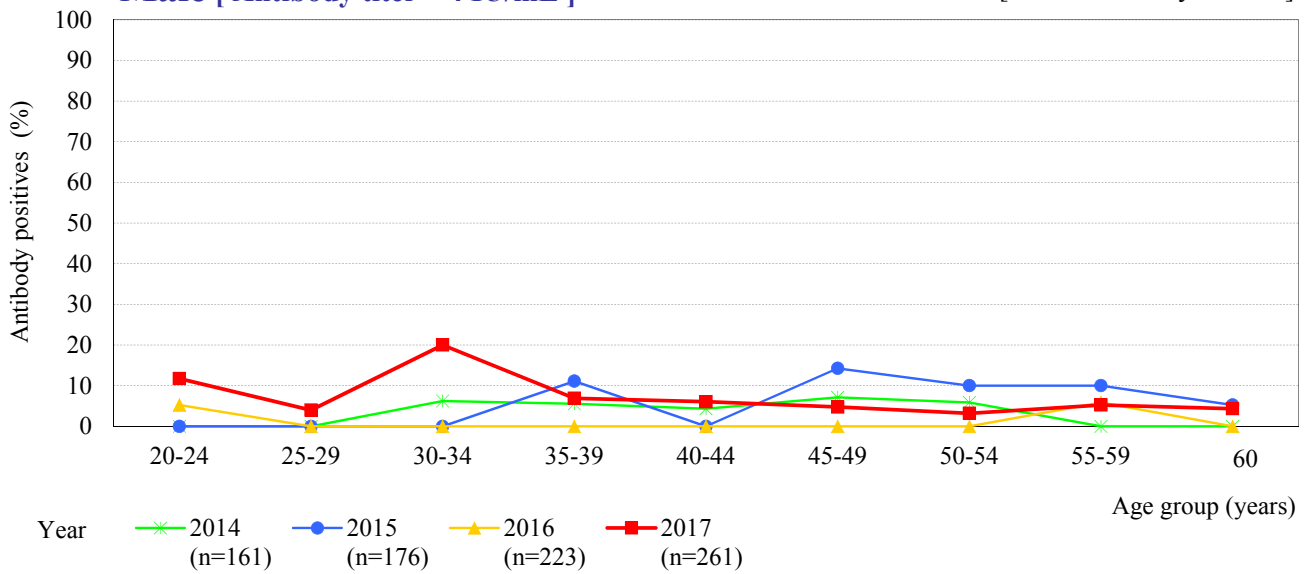
## Male & Female [ Antibody titer $\geq$ 4 IU/mL ]

[ Examination by ELISA ]



## Male [ Antibody titer $\geq$ 4 IU/mL ]

[ Examination by ELISA ]



## Female [ Antibody titer $\geq$ 4 IU/mL ]

[ Examination by ELISA ]

