

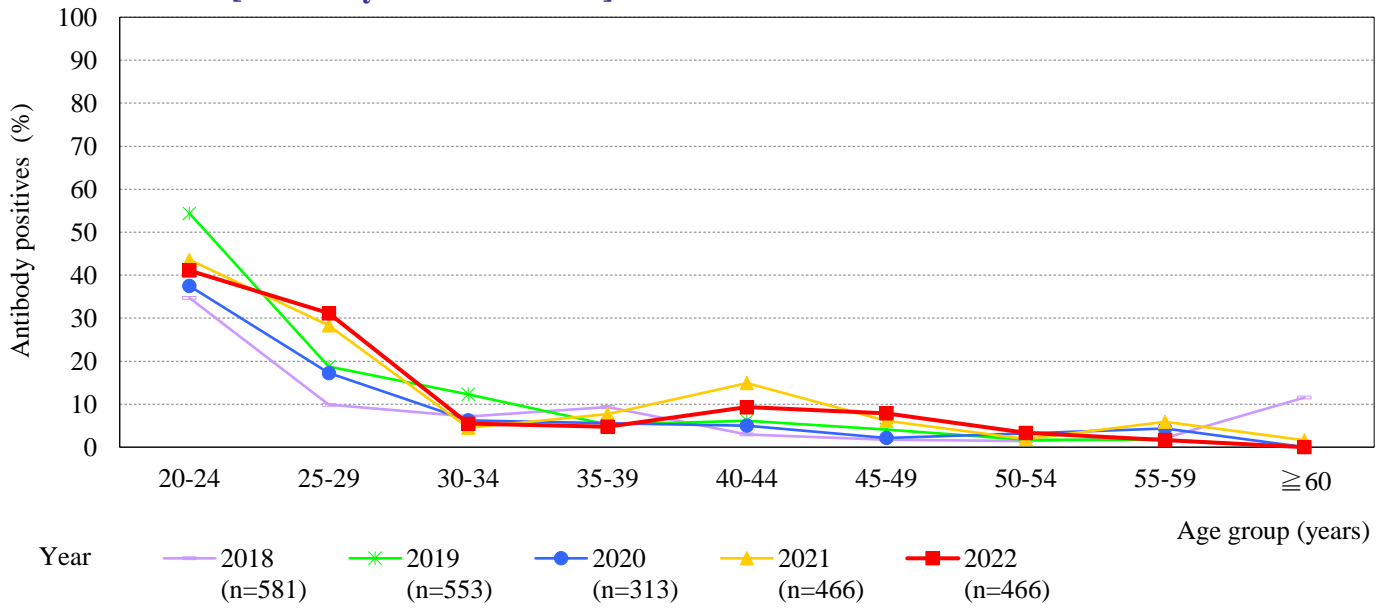
Age distribution of HPV-16 IgG antibody positives in Japan, 2018~2022

— National Epidemiological Surveillance of Vaccine-Preventable Diseases, 2022 —

(As of April 2023)

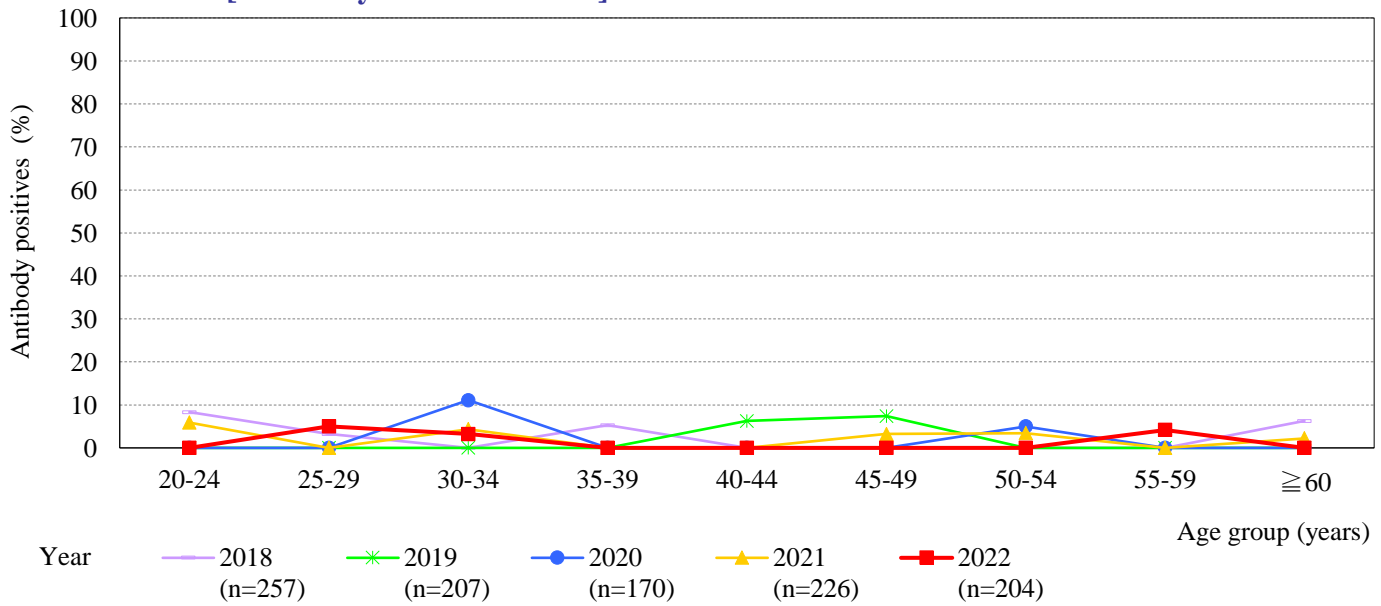
Total [Antibody titer ≥ 4 IU/mL]

[Examination by ELISA]



Male [Antibody titer ≥ 4 IU/mL]

[Examination by ELISA]



Female [Antibody titer ≥ 4 IU/mL]

[Examination by ELISA]

