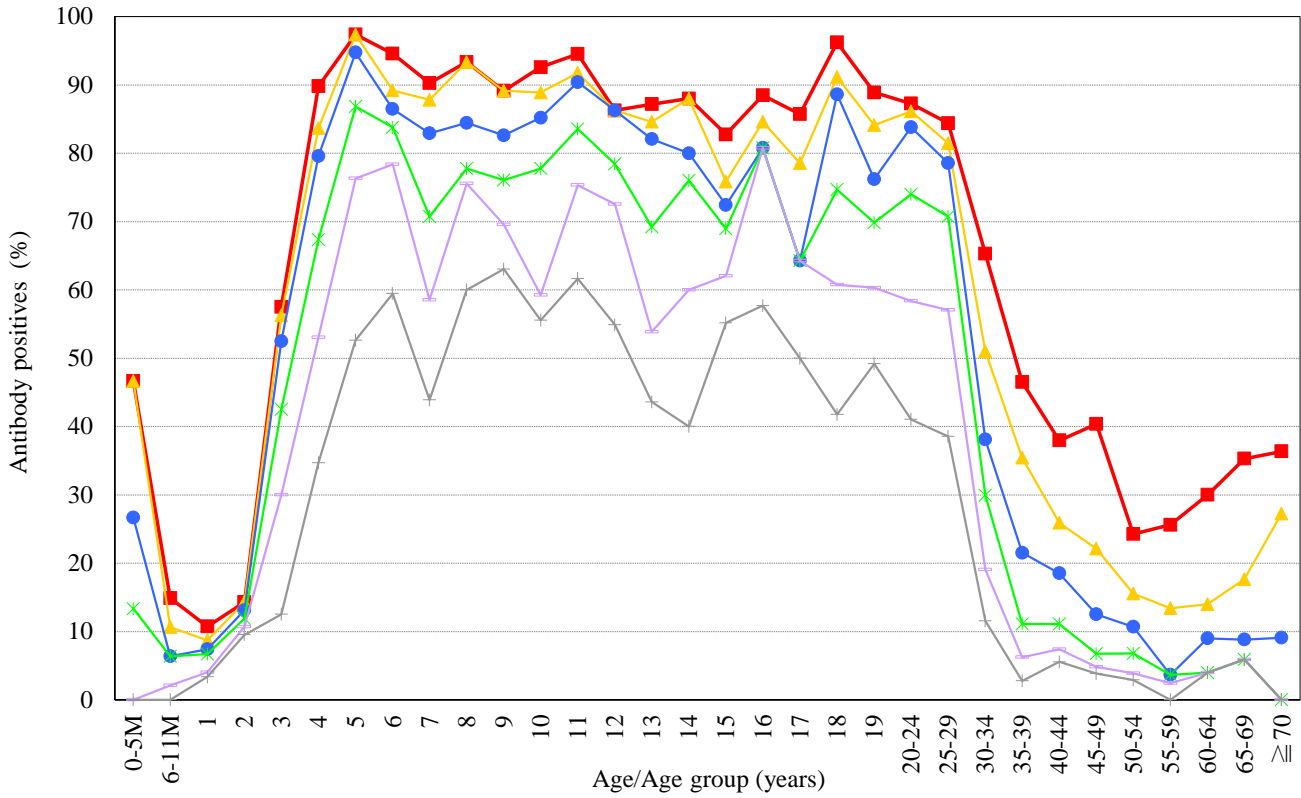


Age distribution of Japanese encephalitis NT antibody positives in Japan, 2015

— National Epidemiological Surveillance of Vaccine-Preventable Diseases, 2015 —

[Examination by neutralization test (NT) / n = 2268]



NT titer ■ ≥ 1:10 ▲ ≥ 1:20 ● ≥ 1:40 * ≥ 1:80 ▼ ≥ 1:160 + ≥ 1:320

NESVPD2015