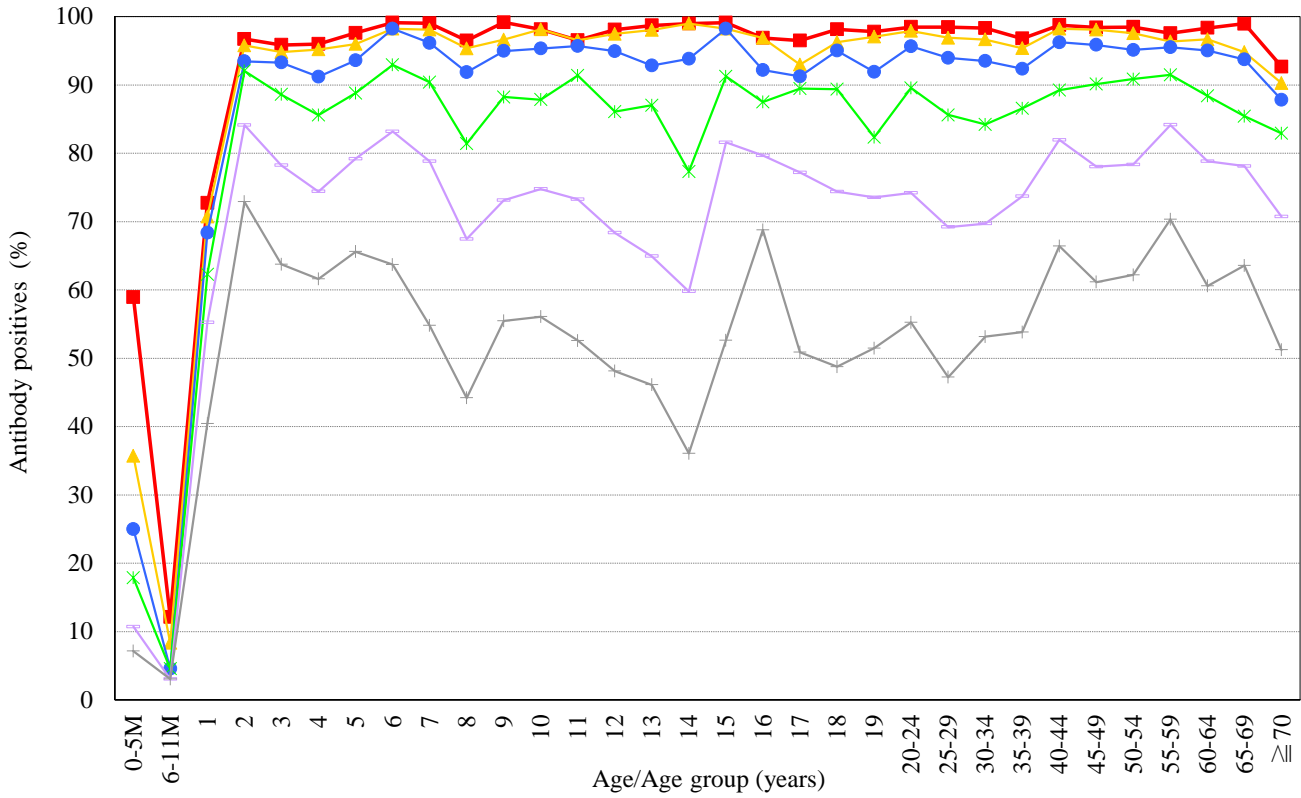


# Age distribution of measles PA antibody positives in Japan, 2015

— National Epidemiological Surveillance of Vaccine-Preventable Diseases, 2015 —

[ Examination by particle agglutination test (PA) / n = 6601 ]



PA titer    ■ ≥ 1:16    ▲ ≥ 1:32    ● ≥ 1:64    \* ≥ 1:128    □ ≥ 1:256    + ≥ 1:512

