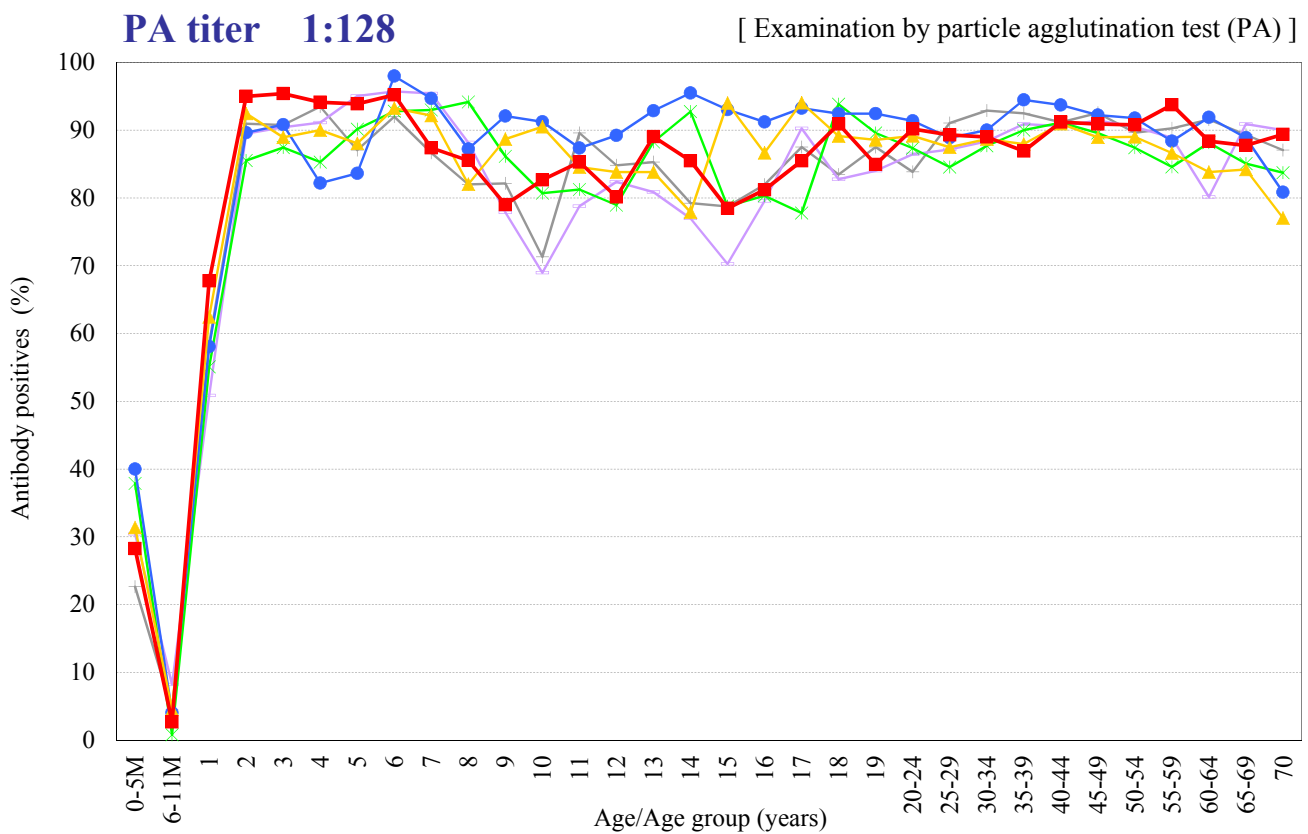
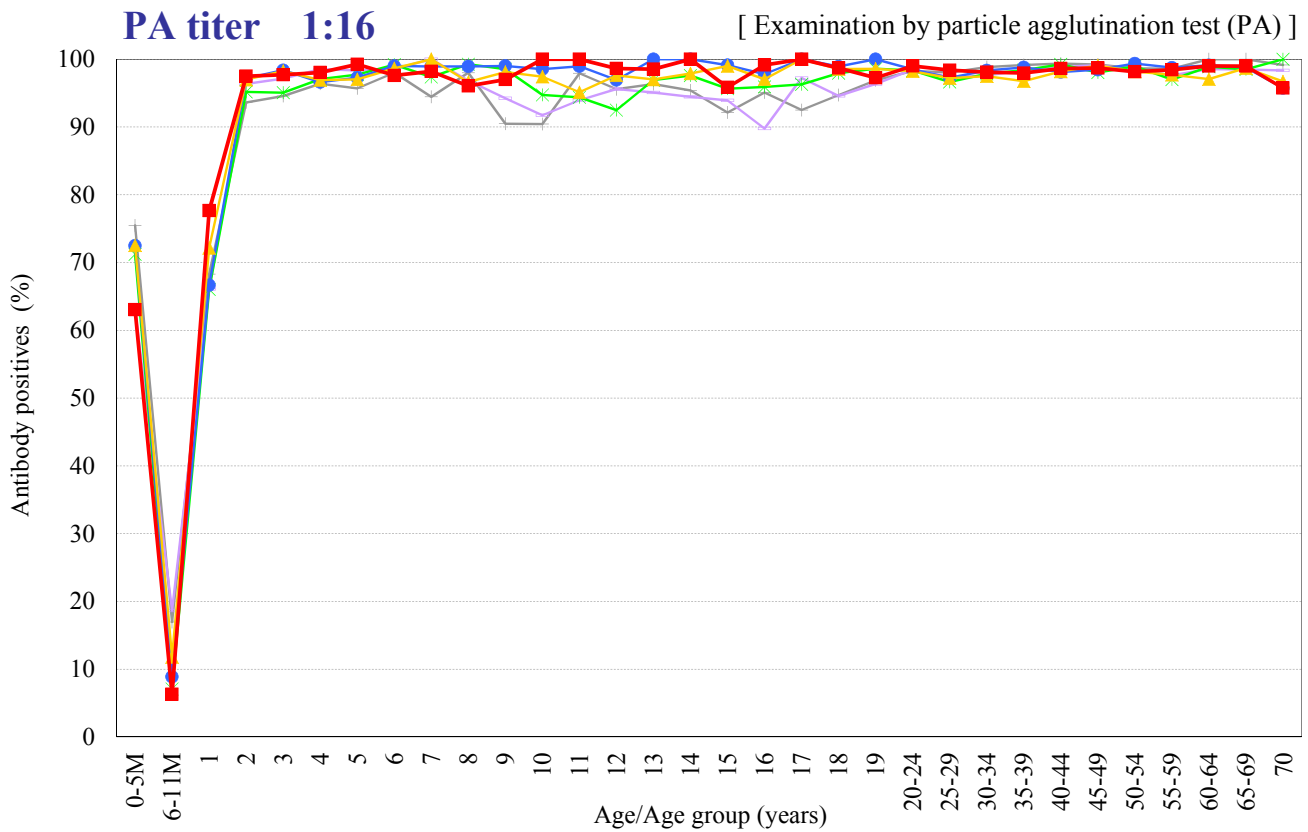


# Age distribution of measles PA antibody positives in Japan, 2006 ~ 2017

- National Epidemiological Surveillance of Vaccine-Preventable Diseases, 2017 -

( As of May 2018 )



Year — 2006 (n=5,992) — 2008 (n=7,013) — 2010 (n=7,159) — 2012 (n=6,860) — 2014 (n=6,786) — 2017 (n=6,521)