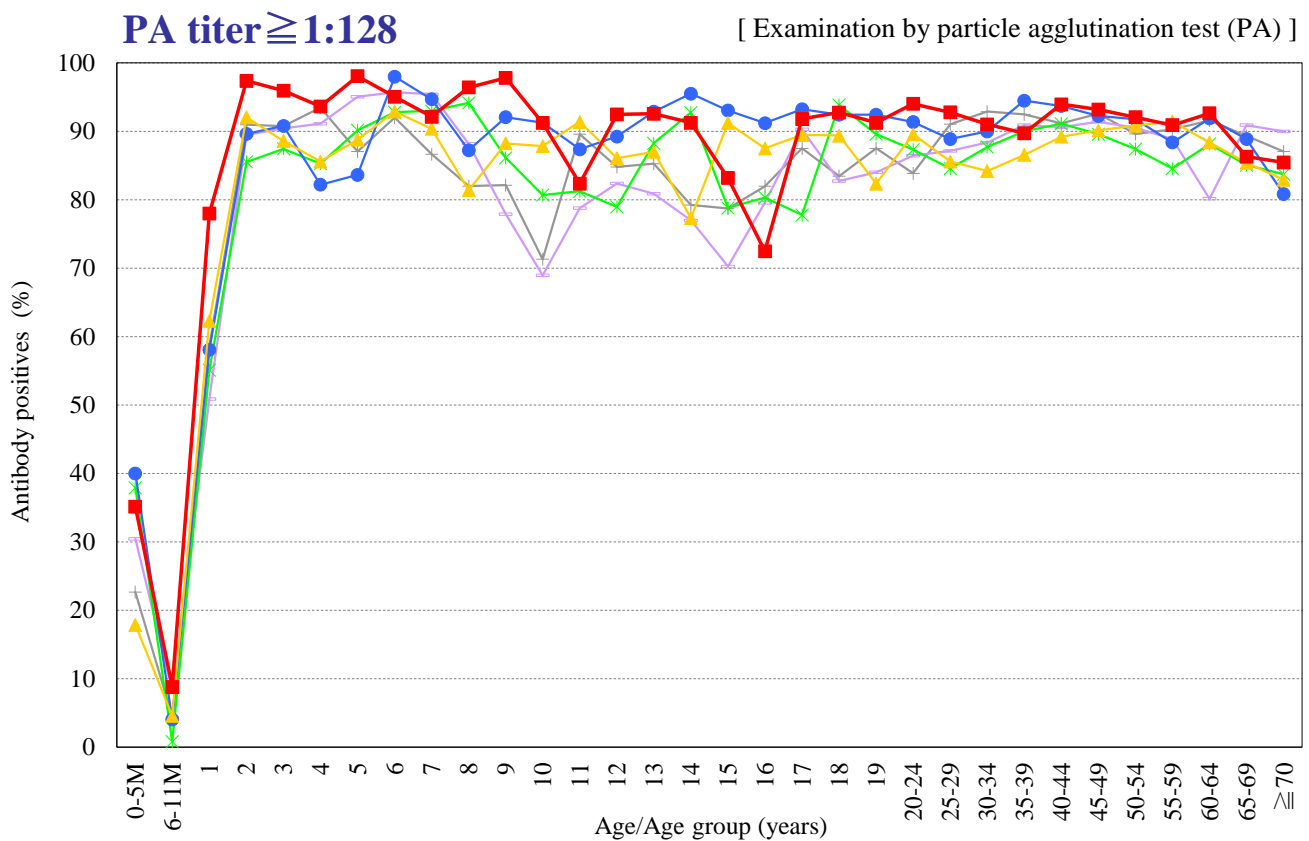
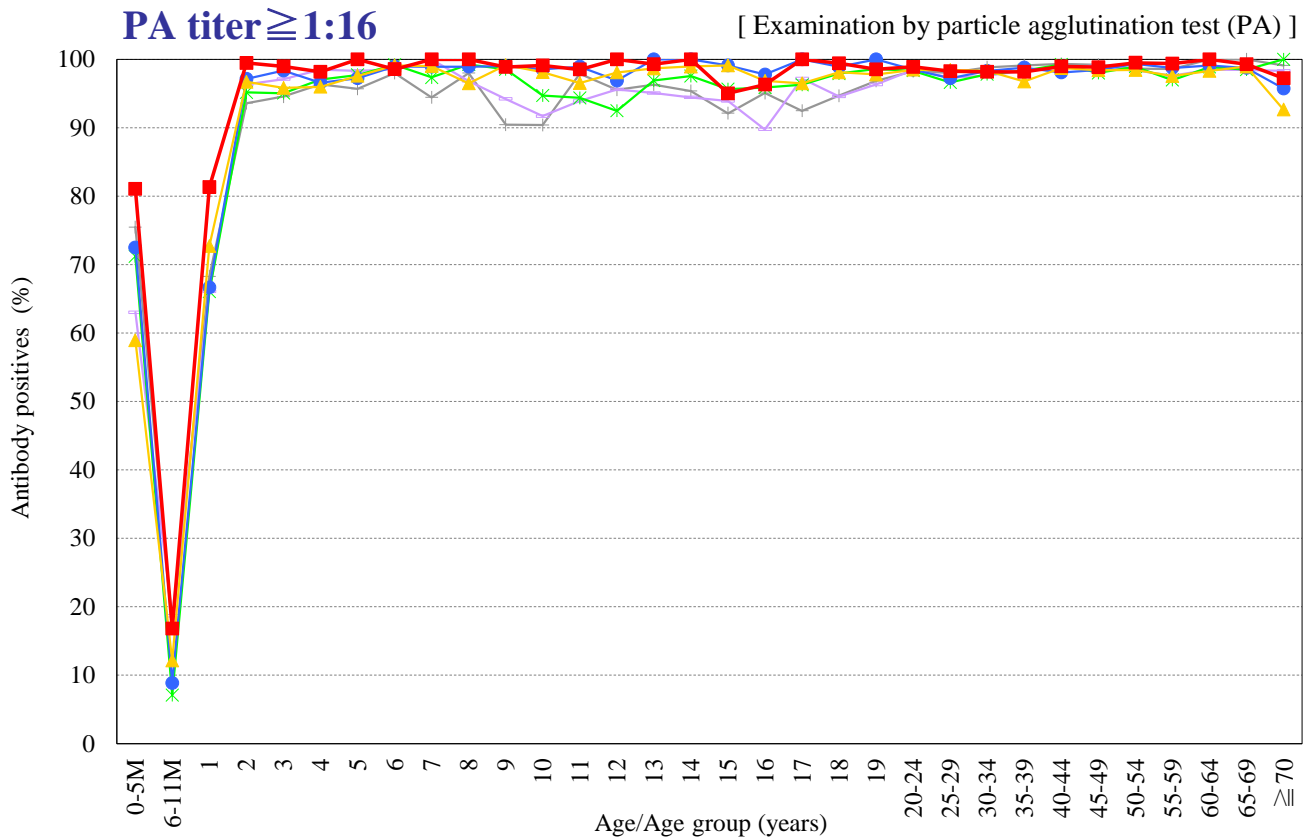


Age distribution of measles PA antibody positives in Japan, 2006~2018

— National Epidemiological Surveillance of Vaccine-Preventable Diseases, 2018 —

(As of May 2019)



Year — 2006 (n=5,992) — 2008 (n=7,013) — 2010 (n=7,159) — 2012 (n=6,860) — 2015 (n=6,601) — 2018 (n=7,268)

NESVPD2018