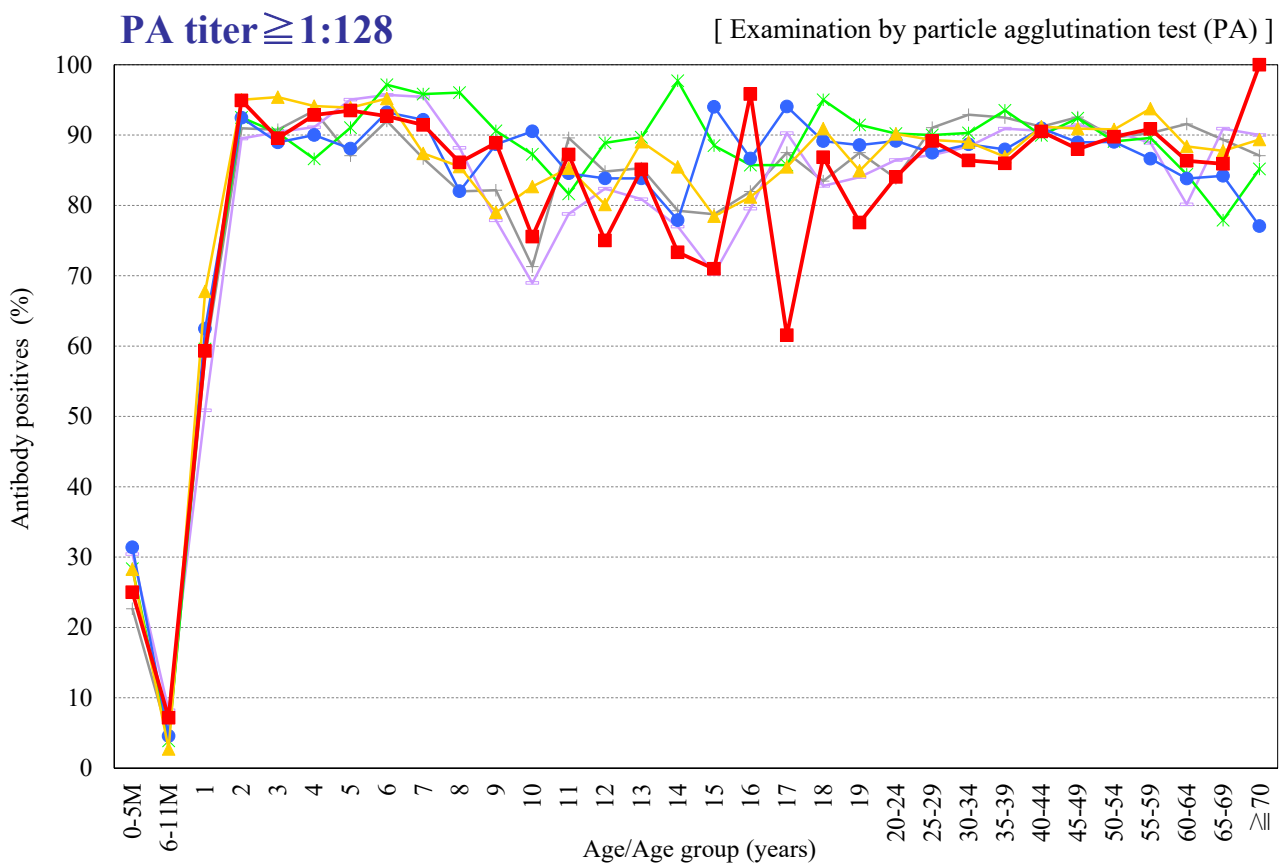
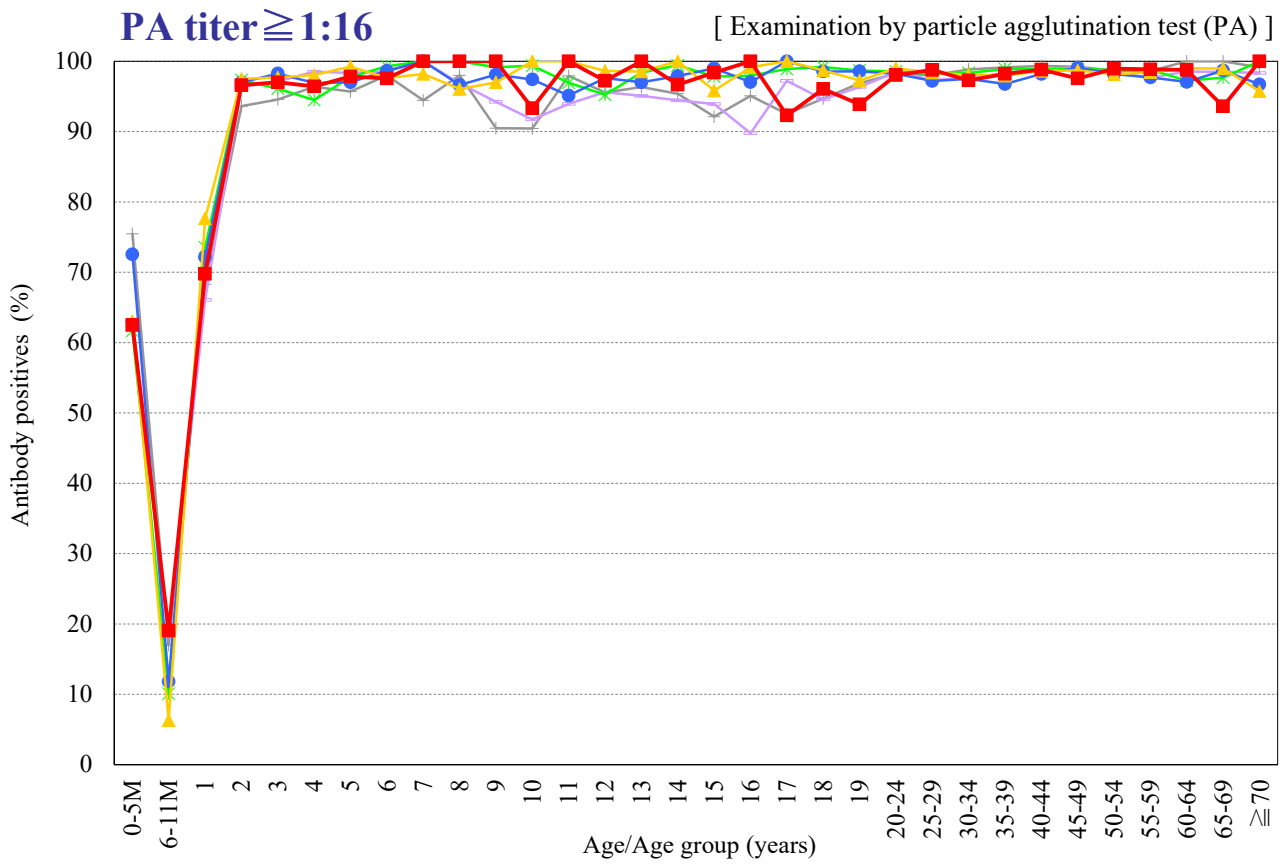


Age distribution of measles PA antibody positives in Japan, 2006~2020

— National Epidemiological Surveillance of Vaccine-Preventable Diseases, 2020 —

(As of April 2021)



Year — 2006 (n=5,992) — 2008 (n=7,013) — 2011 (n=7,412) — 2014 (n=6,786) — 2017 (n=6,521) — 2020 (n=3,828)