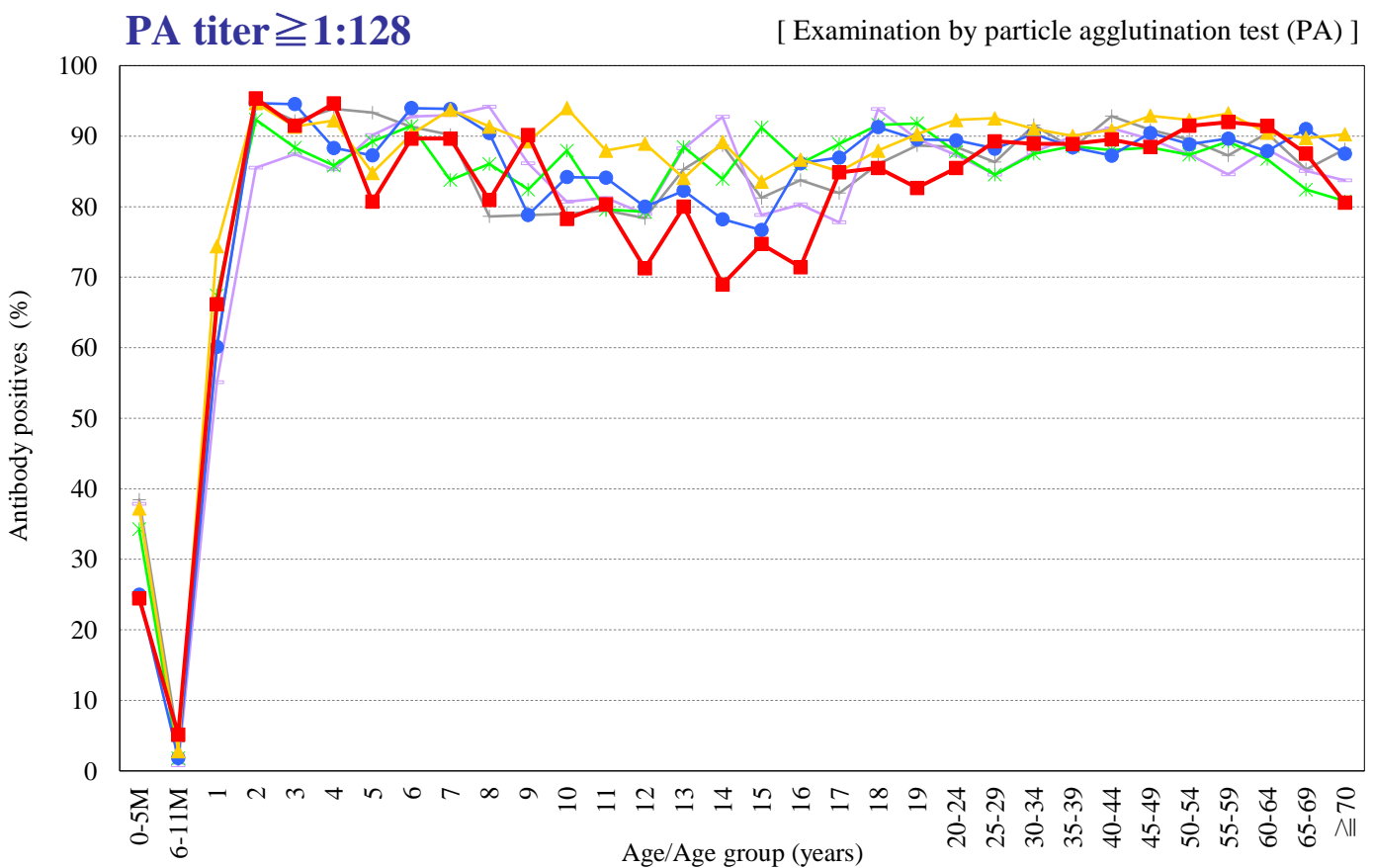
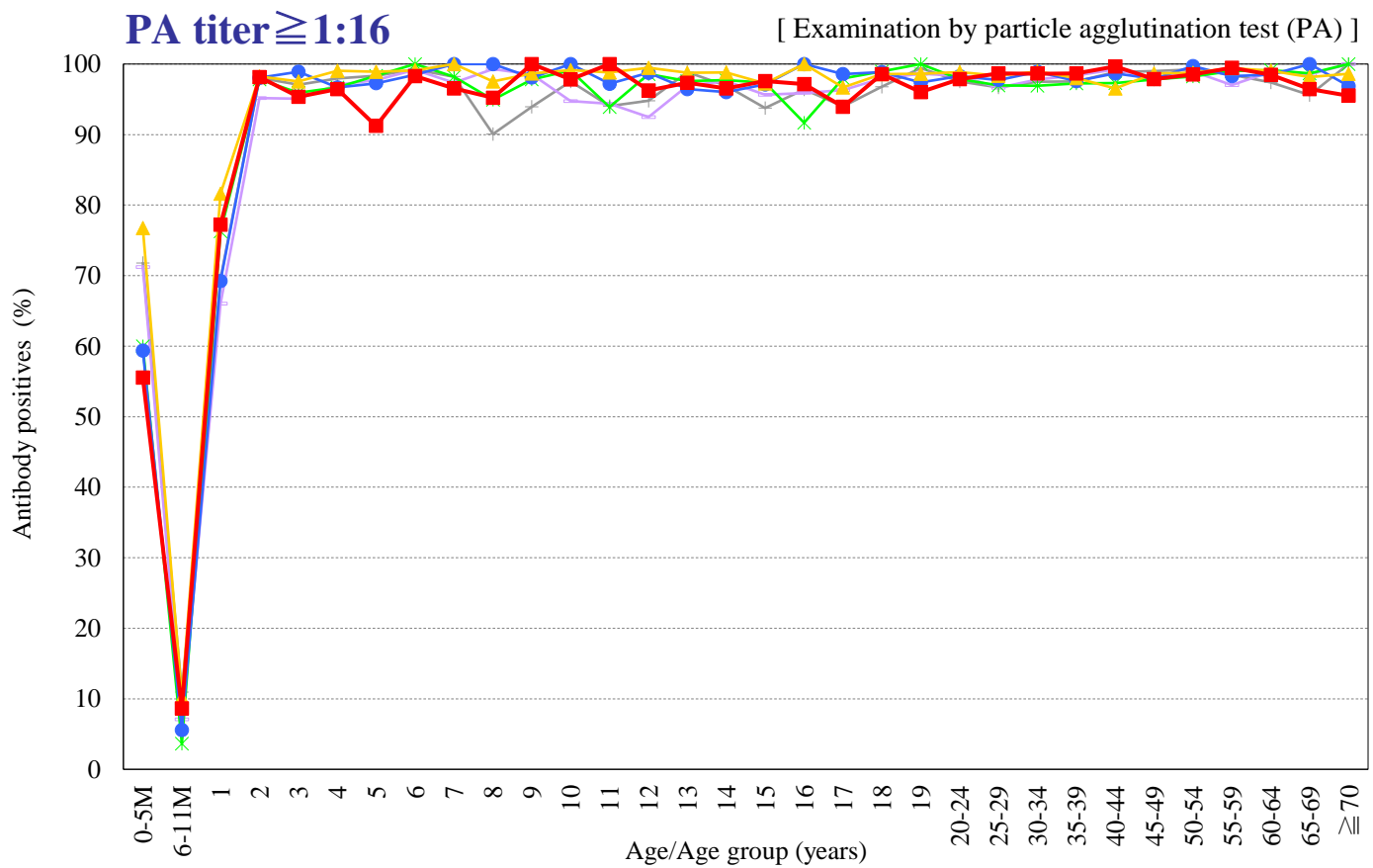


# Age distribution of measles PA antibody positives in Japan, 2007~2022

— National Epidemiological Surveillance of Vaccine-Preventable Diseases, 2022 —

(As of April 2022)



Year — 2007 (n=6,939) — 2010 (n=7,159) — 2013 (n=6,980) — 2016 (n=6,462) — 2019 (n=6,628) — 2022 (n=5,185)

