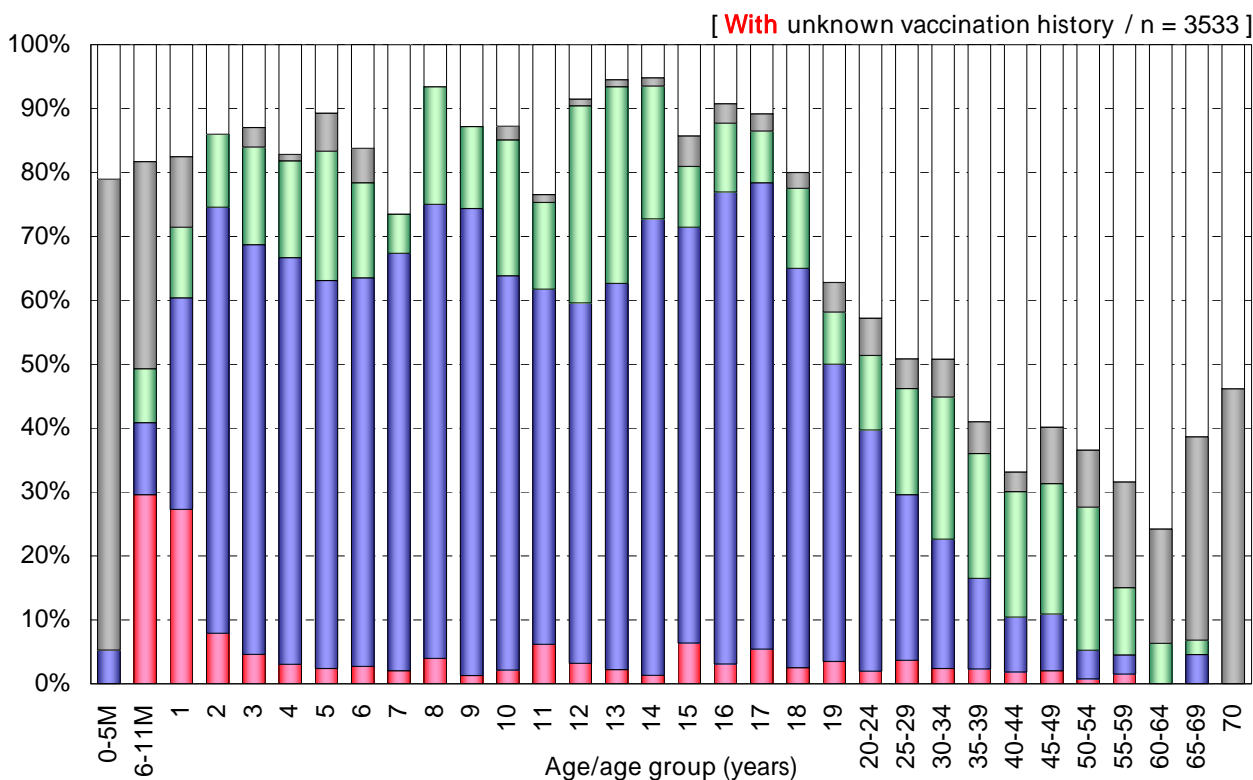
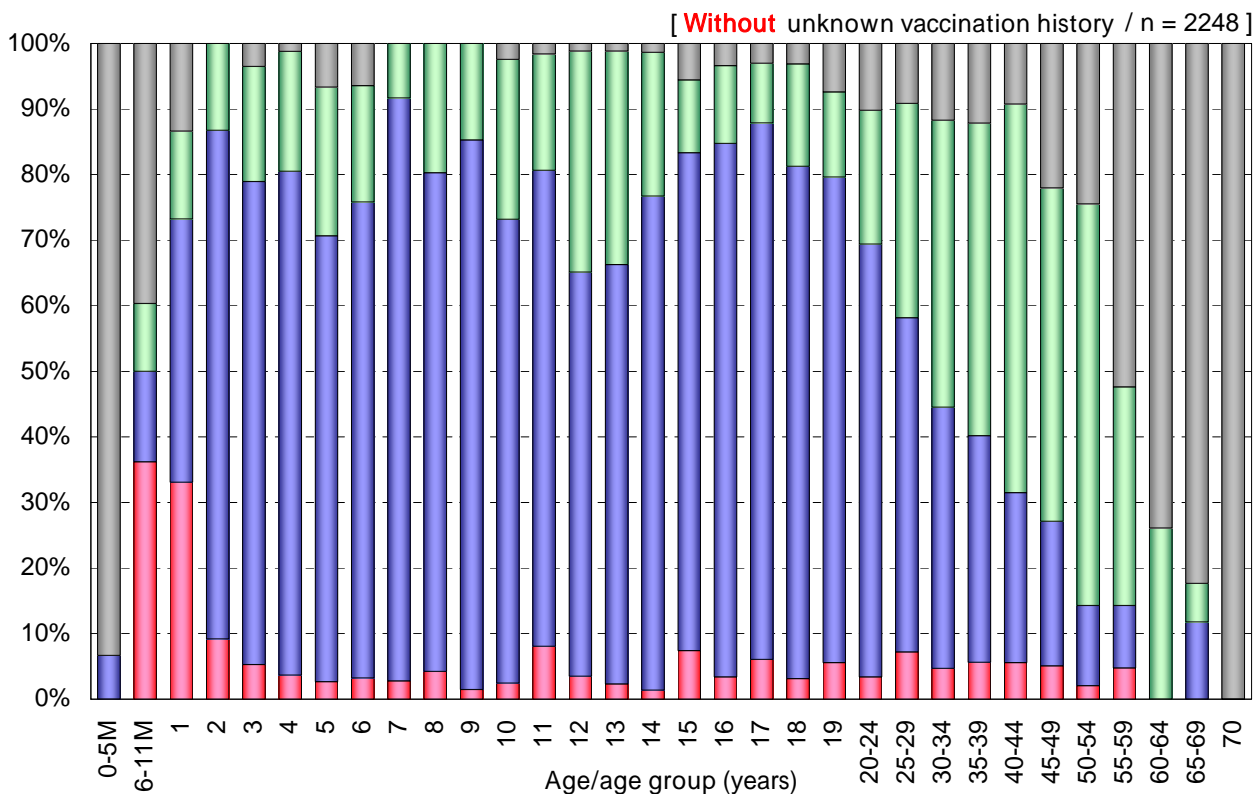


Age distribution of polio vaccination history in Japan, 2006

- National Epidemiological Surveillance of Vaccine-Preventable Diseases, 2006 -



Vaccination history

- 1 dose [n=154]
- 2 doses [n=1294]
- Unknown doses [n=556]
- Non-vaccinee [n=244]
- Unknown vaccination history [n=1285]