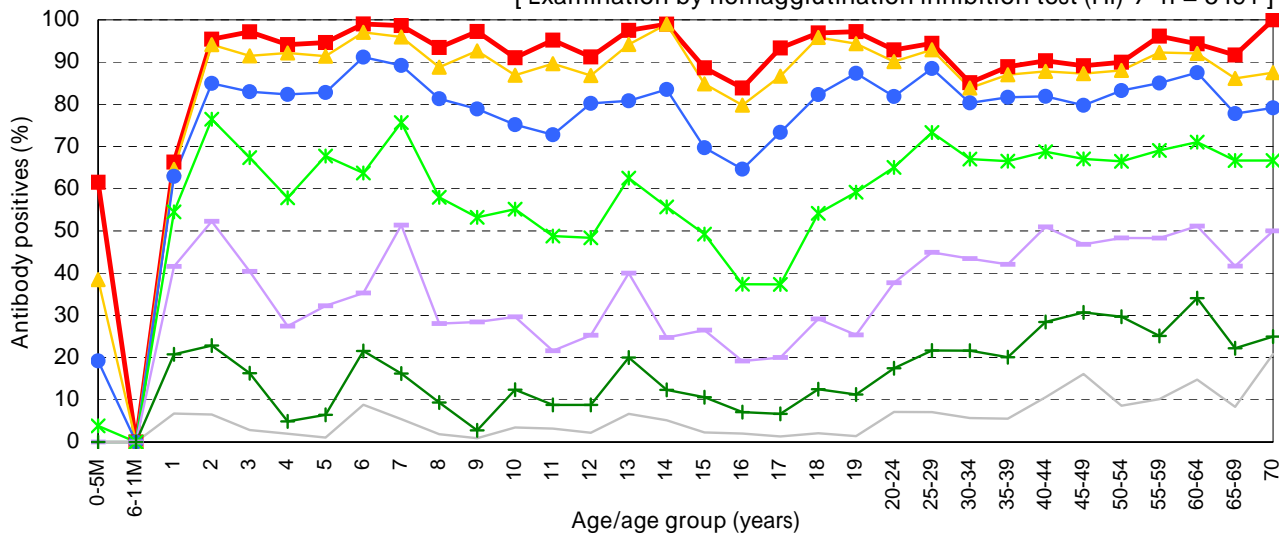


Age distribution of rubella HI antibody positives in Japan, 2010

- National Epidemiological Surveillance of Vaccine-Preventable Diseases, 2010 -

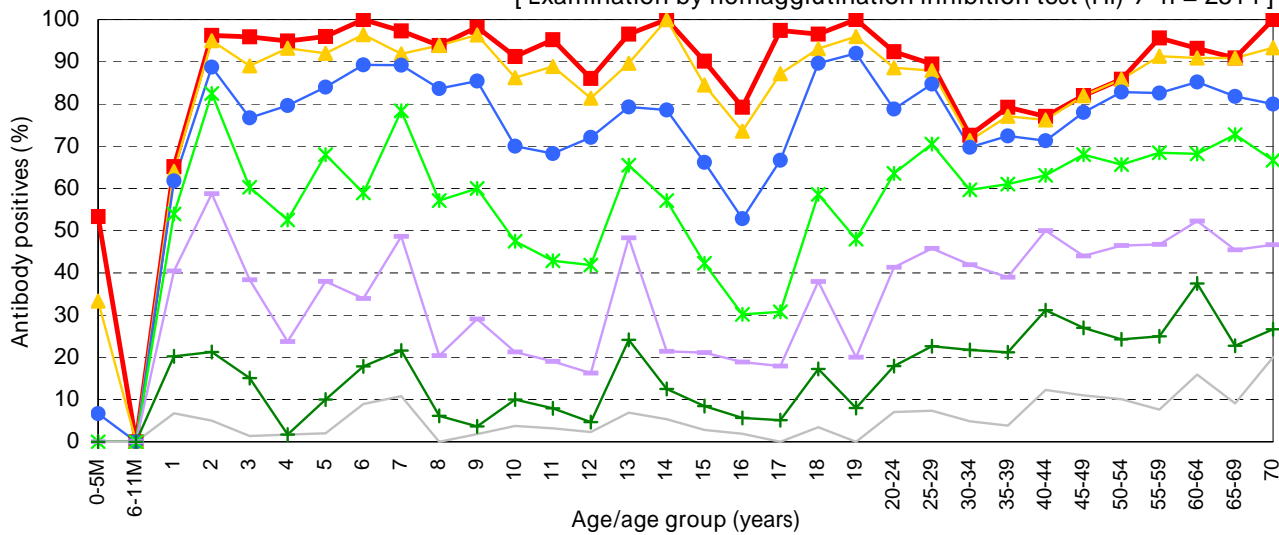
Male & Female

[Examination by hemagglutination inhibition test (HI) / n = 5491]



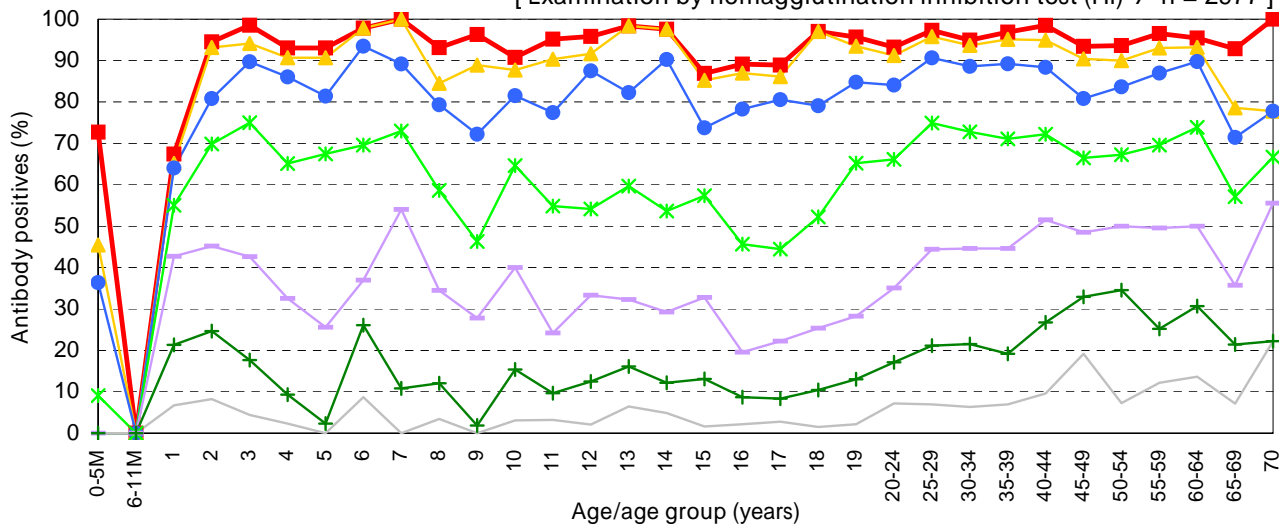
Male

[Examination by hemagglutination inhibition test (HI) / n = 2514]



Female

[Examination by hemagglutination inhibition test (HI) / n = 2977]



HI titer — 1:8 (red square) — 1:16 (yellow triangle) — 1:32 (blue circle) — 1:64 (green asterisk) — 1:128 (purple plus) — 1:256 (green cross) — 1:512 (grey cross)