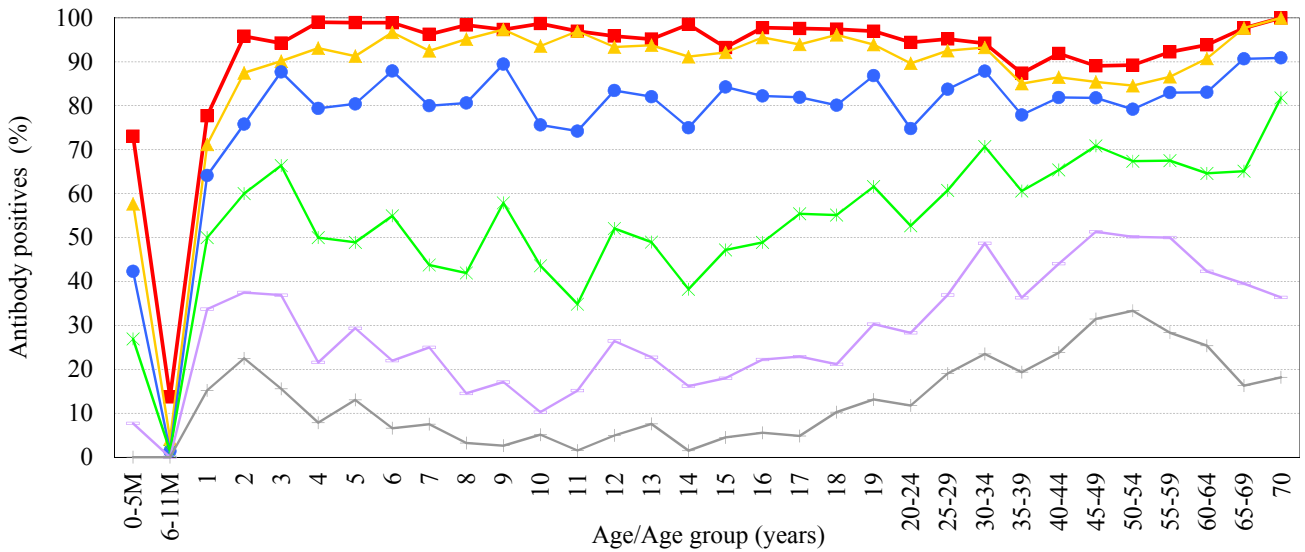


Age distribution of rubella HI antibody positives in Japan, 2013

- National Epidemiological Surveillance of Vaccine-Preventable Diseases, 2013 -

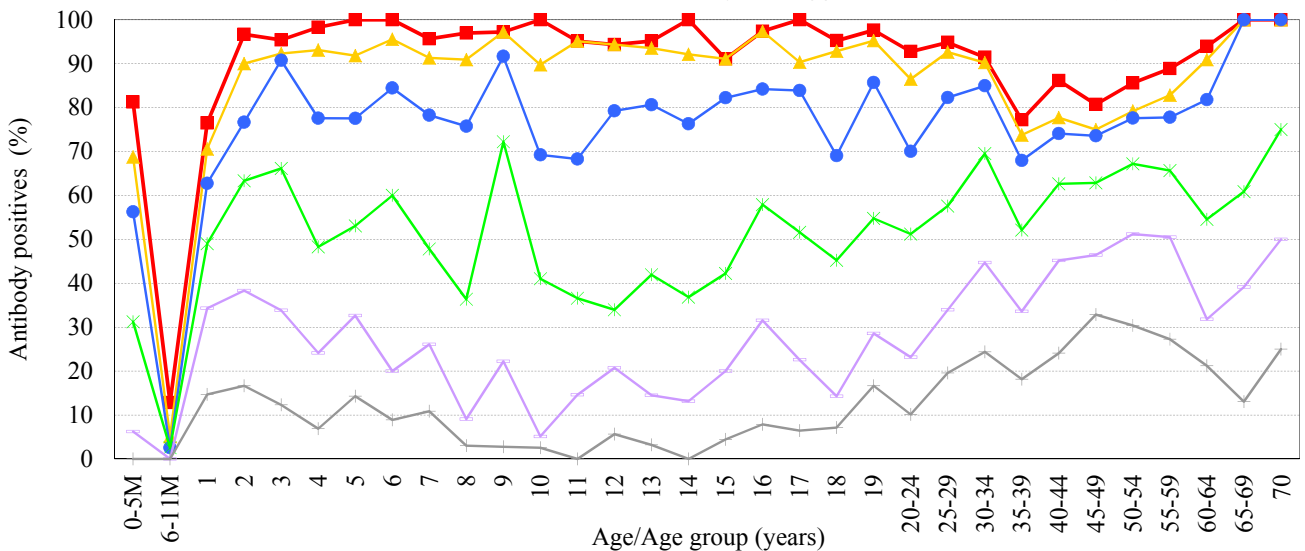
Male & Female

[Examination by hemagglutination inhibition test (HI) / n = 5524]



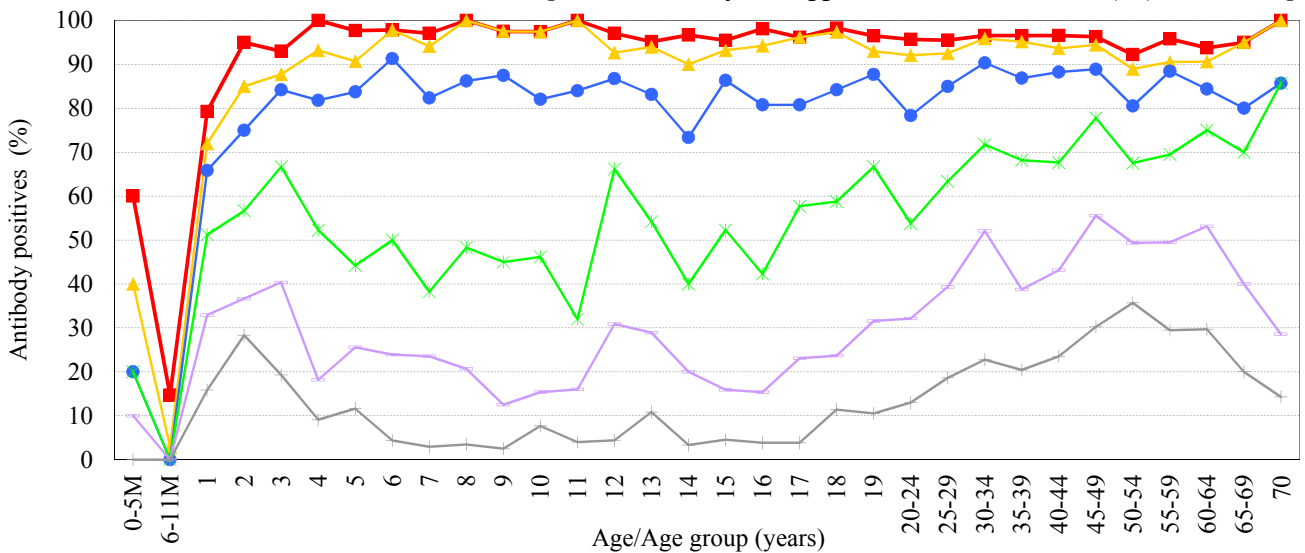
Male

[Examination by hemagglutination inhibition test (HI) / n = 2586]



Female

[Examination by hemagglutination inhibition test (HI) / n = 2938]



HI titer 1:8 1:16 1:32 1:64 1:128 1:256